

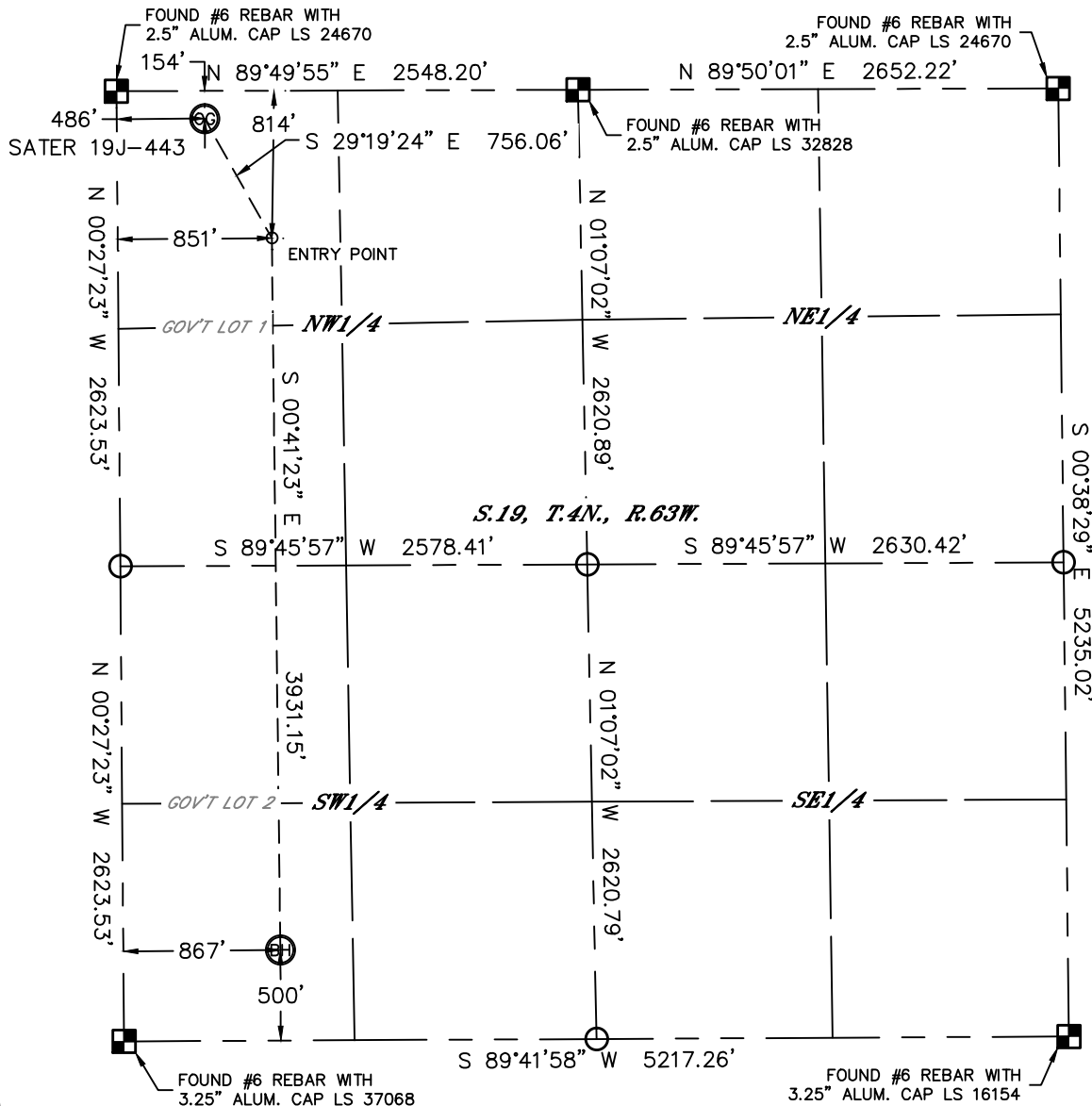


Lat40°, Inc. 6250 W. 10th Street, Unit 2, Greeley, CO 970-515-5294

WELL LOCATION CERTIFICATE

THIS MAP DOES NOT REPRESENT A BOUNDARY SURVEY

SECTION: 19
TOWNSHIP: 4N
RANGE: 63W



In accordance with a request from Mac Neumann with PDC ENERGY Lat40°, Inc. has determined the surface location of the SATER 19J-443 to be 154' from the NORTH line and 486' from the WEST line and the bottom hole to be 500' from the SOUTH line and 867' from the WEST line as measured at right angles from the section lines of Section 19, Township 4 North, Range 63 West of the Sixth Principal Meridian, County of Weld, State of Colorado.

I hereby state that this Well Location Certificate was prepared by me, or under my direct supervision, that the fieldwork was completed on 9/9/2014, for and on behalf of PDC ENERGY. That this is not a Land Survey Plat or an Improvement Survey Plat, and that it is not to be relied upon for establishment of fence, building, or other future improvement lines.

SURFACE LOCATION

LAT: 40.30448°N
LONG: 104.48794°W
PDOP: 2.5
ELEV: 4660'
1/4,1/4: NWNW

BOTTOM HOLE

LAT: 40.29187°N
LONG: 104.48663°W

ENTRY POINT

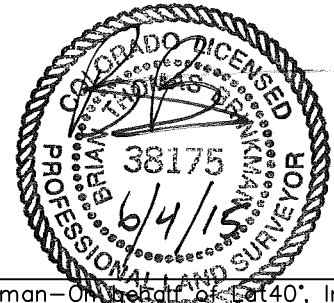
LAT: 40.30266°N
LONG: 104.48664°W

LEGEND

- = ALIQUOT MONUMENT AS DESCRIBED
- = CALCULATED POSITION

Brian T. Brinkman—On Behalf of Lat40°, Inc.
Colorado Licensed Professional
Land Surveyor No. 38175

DATE: 6/3/2015
PROJECT#: 2014167



NOTE:

- 1) Bearings shown are Grid Bearings of the Colorado State Plane Coordinate System, North Zone, North American Datum 1983. The lineal dimensions as contained herein are based upon the "U.S. Survey Foot."
- 2) Ground elevations are based on an observed GPS elevation (NAVD 1988 DATUM).
- 3) IMPROVEMENTS: See LOCATION DRAWING for all visible improvements within 500' of disturbed area.
- 4) SURFACE USE: RANGELAND
- 5) INSTRUMENT OPERATOR: WYATT HALL
- 6) NEAREST CULTURAL ITEMS:
BUILDING: ±4947' NW
BUILDING UNIT: 5280'+
HIGH OCCUPANCY BUILDING UNIT: 5280'+
DESIGNATED OUTSIDE ACTIVITY AREA: 5280'+
PUBLIC ROAD: 5280'+
ABOVEGROUND UTILITY: ±2917' NW
RAILROAD: 5280'+
PROPERTY LINE: ±154' N

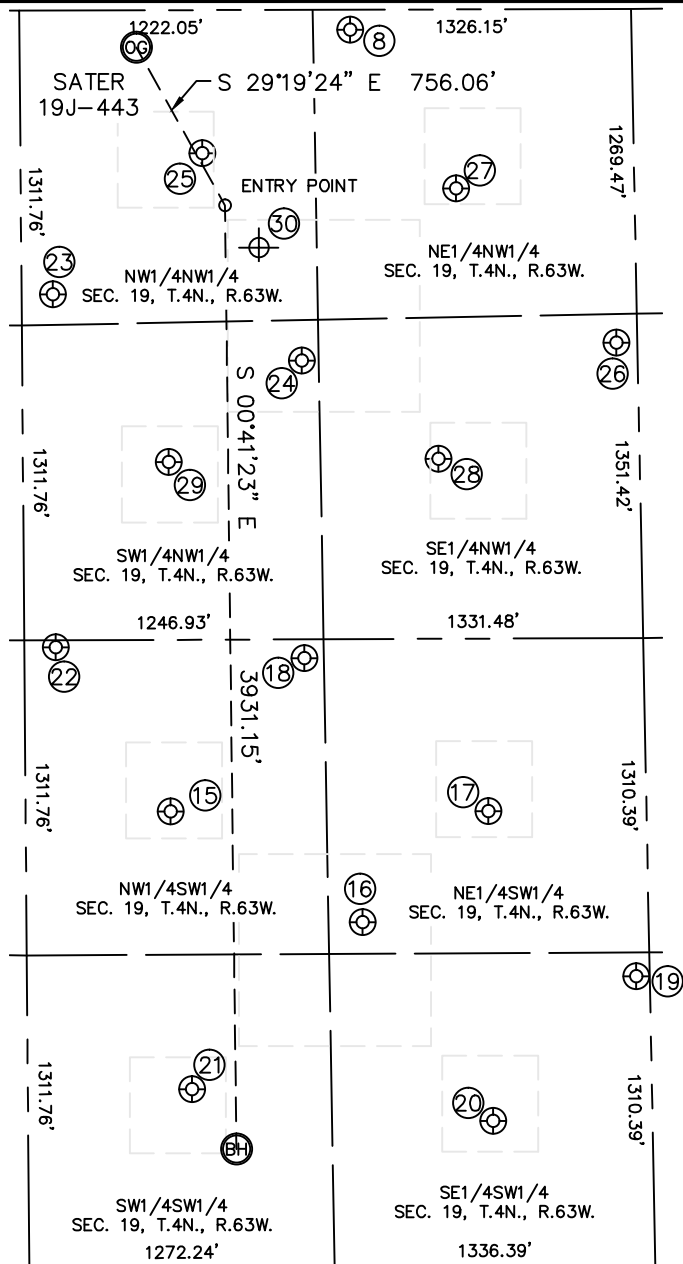


Lat40°, Inc. 6250 W. 10th Street, Unit 2,
Greeley, CO 970-515-5294

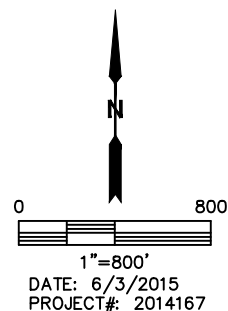
SITE SKETCH

SATER 19J-443

SECTION: 19
TOWNSHIP: 4N
RANGE: 63W



NOTE: THE ABANDONED WELL DATA SHOWN IN RED
BELOW WAS OBTAINED FROM COGCC SCOUT CARDS.



DATE: 6/3/2015
PROJECT#: 2014167

WELL NO.	WELL NAME	SHL FOOTAGE				SHL LAT°	SHL LONG°	PDOP	ELEV (FT.)	1/4/1/4
8	SATER 19-JU	84	FNL	1377	FWL	40.30465	-104.48475	1.9	4665	NENW
15	SATER 13-19U	1907	FSL	604	FWL	40.29574	-104.48756	3.1	4742	NWSW
16	SATER 19-BU	1442	FSL	1400	FWL	40.29444	-104.48471	3.1	4716	NESW
17	SATER 23-19U	1902	FSL	1927	FWL	40.29570	-104.48282	3.0	4701	NESW
18	SATER 19-KU	2543	FSL	1166	FWL	40.29747	-104.48554	2.9	4695	NWSW
19	SATER 19-PU	1211	FSL	2538	FWL	40.29379	-104.48064	2.7	4708	SESW
20	SATER 24-19U	612	FSL	1937	FWL	40.29216	-104.48280	2.5	4735	SESW
21	SATER 14-19U	751	FSL	683	FWL	40.29256	-104.48729	2.5	4735	SWSW
22	SATER 19-GU	2594	FSL	130	FWL	40.29763	-104.48925	3.4	4723	NWSW
23	SATER 19F-UNIOIL	1183	FNL	130	FWL	40.30166	-104.48923	3.4	4686	NWNW
24	SATER 19-AU	1461	FNL	1165	FWL	40.30087	-104.48552	3.2	4687	SWNW
25	SATER 11-19U	597	FNL	757	FWL	40.30326	-104.48698	3.0	4675	NWNW
26	SATER 19-NU	1390	FNL	2476	FWL	40.30104	-104.48082	2.9	4674	SENW
27	SATER 21-19U	746	FNL	1813	FWL	40.30282	-104.48319	2.8	4686	NENW
28	SATER 22-19U	1873	FNL	1731	FWL	40.29973	-104.48350	2.7	4684	SENW
29	SATER 12-19U	1882	FNL	607	FWL	40.29973	-104.48753	1.7	4686	SWNW
30	LIMERICK 1	990	FNL	990	FWL	40.30198	-104.48616	N/A	4683	NWNW