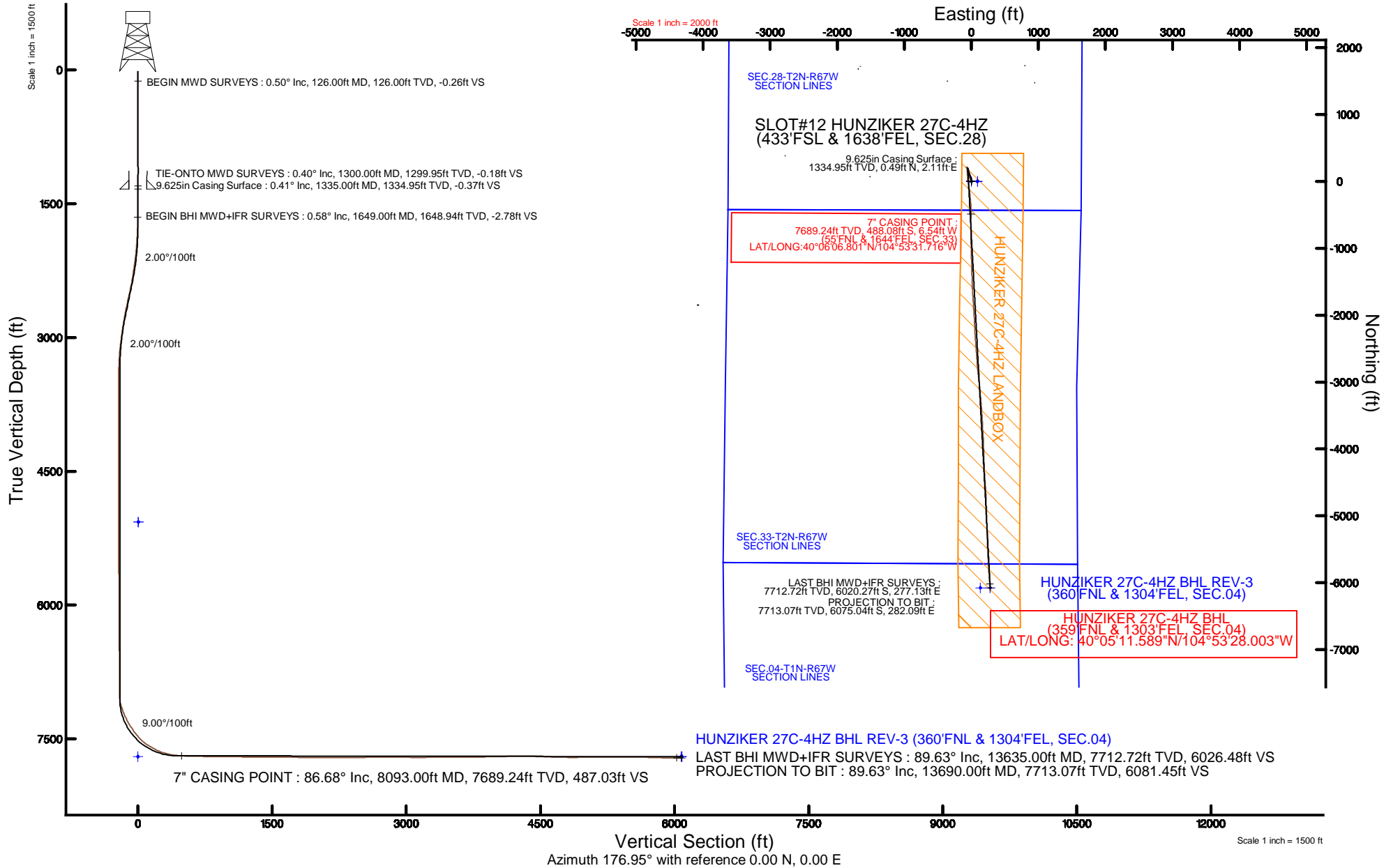


KERR-MCGEE OIL & GAS ONSHORE LP (WA)

Location: COLORADO Slot: SLOT#12 HUNZIKER 27C-4HZ (433'FSL & 1638'FEL, SEC.28)
 Field: WELD COUNTY (UTM/TRUE NORTH) Well: HUNZIKER 27C-4HZ
 Facility: SEC.28-T2N-R67W Wellbore: HUNZIKER 27C-4HZ PWB

Plot reference wellpath is HUNZIKER 27C-4HZ (REV-C.0) PWP

True vertical depths are referenced to PRECISION 460 (20KB) (RKB)	Grid System: NAD83 / UTM Zone 13 North, US feet
Measured depths are referenced to PRECISION 460 (20'KB) (RKB)	North Reference: True north
PRECISION 460 (20'KB) (RKB) to Mean Sea Level: 5069 feet	Scale: True distance
Mean Sea Level to Mud line (At Slot: SLOT#12 HUNZIKER 27C-4HZ (433'FSL & 1638'FEL, SEC.28)): 0 feet	Depths are in feet
Coordinates are in feet referenced to Slot	Created by: amarcar on 05/May/2015





Actual Wellpath Report

HUNZIKER 27C-4HZ AWP
Page 1 of 6



REFERENCE WELLPATH IDENTIFICATION			
Operator	KERR-MCGEE OIL & GAS ONSHORE LP (WA)	Slot	SLOT#12 HUNZIKER 27C-4HZ (433'FSL & 1638'FEL, SEC.28)
Area	COLORADO	Well	HUNZIKER 27C-4HZ
Field	WELD COUNTY (UTM/TRUE NORTH)	Wellbore	HUNZIKER 27C-4HZ AWB <13690>
Facility	SEC.28-T2N-R67W		

REPORT SETUP INFORMATION			
Projection System	NAD83 / UTM Zone 13 North, US feet	Software System	WellArchitect® 4.1.1
North Reference	True	User	Amarcar
Scale	0.999601	Report Generated	05/May/2015 at 14:12
Convergence at slot	0.07° East	Database/Source file	KERR MCGEE UTM/HUNZIKER_27C-4HZ_AWB__13690_.xml

WELLPATH LOCATION						
	Local coordinates		Grid coordinates		Geographic coordinates	
	North[ft]	East[ft]	Easting[US ft]	Northing[US ft]	Latitude	Longitude
Slot Location	-4193.41	-990.28	1670583.02	14564341.92	40°06'11.624"N	104°53'31.632"W
Facility Reference Pt			1671567.66	14568534.88	40°06'53.064"N	104°53'18.888"W
Field Reference Pt			1698235.31	14552047.82	40°04'09.600"N	104°47'36.000"W

WELLPATH DATUM			
Calculation method	Minimum curvature	PRECISION 460 (20'KB) (RKB) to Facility Vertical Datum	5069.00ft
Horizontal Reference Pt	Slot	PRECISION 460 (20'KB) (RKB) to Mean Sea Level	5069.00ft
Vertical Reference Pt	PRECISION 460 (20'KB) (RKB)	PRECISION 460 (20'KB) (RKB) to Mud Line at Slot (SLOT#12 HUNZIKER 27C-4HZ (433'FSL & 1638'FEL, SEC.28))	5069.00ft
MD Reference Pt	PRECISION 460 (20'KB) (RKB)	Section Origin	N 0.00, E 0.00 ft
Field Vertical Reference	Mean Sea Level	Section Azimuth	176.95°



Actual Wellpath Report

HUNZIKER 27C-4HZ AWP
Page 2 of 6



REFERENCE WELLPATH IDENTIFICATION			
Operator	KERR-MCGEE OIL & GAS ONSHORE LP (WA)	Slot	SLOT#12 HUNZIKER 27C-4HZ (433'FSL & 1638'FEL, SEC.28)
Area	COLORADO	Well	HUNZIKER 27C-4HZ
Field	WELD COUNTY (UTM/TRUE NORTH)	Wellbore	HUNZIKER 27C-4HZ AWP <13690>
Facility	SEC.28-T2N-R67W		

WELLPATH DATA (128 stations) † = interpolated/extrapolated station										
MD [ft]	Inclination [°]	Azimuth [°]	TVD [ft]	Vert Sect [ft]	North [ft]	East [ft]	Latitude	Longitude	DLS ["/100ft]	Comments
0.00†	0.000	300.700	0.00	0.00	0.00	0.00	40°06'11.624"N	104°53'31.632"W	0.00	
20.00	0.000	300.700	20.00	0.00	0.00	0.00	40°06'11.624"N	104°53'31.632"W	0.00	
126.00	0.500	300.700	126.00	-0.26	0.24	-0.40	40°06'11.626"N	104°53'31.637"W	0.47	BEGIN MWD SURVEYS
213.00	0.400	285.700	213.00	-0.57	0.51	-1.02	40°06'11.629"N	104°53'31.645"W	0.18	
301.00	0.400	321.000	300.99	-0.91	0.83	-1.51	40°06'11.632"N	104°53'31.651"W	0.28	
390.00	0.700	308.100	389.99	-1.52	1.41	-2.13	40°06'11.638"N	104°53'31.659"W	0.36	
480.00	0.100	308.700	479.99	-1.94	1.80	-2.62	40°06'11.642"N	104°53'31.666"W	0.67	
576.00	0.200	216.200	575.99	-1.86	1.72	-2.79	40°06'11.641"N	104°53'31.668"W	0.24	
672.00	0.500	161.900	671.99	-1.33	1.18	-2.76	40°06'11.636"N	104°53'31.667"W	0.43	
768.00	0.900	130.000	767.98	-0.41	0.30	-2.05	40°06'11.627"N	104°53'31.658"W	0.57	
863.00	1.000	100.700	862.97	0.30	-0.33	-0.66	40°06'11.621"N	104°53'31.641"W	0.52	
957.00	0.400	72.800	956.96	0.41	-0.39	0.46	40°06'11.620"N	104°53'31.626"W	0.72	
1050.00	0.300	150.000	1049.96	0.55	-0.50	0.89	40°06'11.619"N	104°53'31.621"W	0.48	
1148.00	0.300	75.400	1147.96	0.73	-0.66	1.27	40°06'11.617"N	104°53'31.616"W	0.37	
1239.00	0.600	25.000	1238.95	0.26	-0.17	1.70	40°06'11.622"N	104°53'31.610"W	0.52	
1300.00	0.400	38.600	1299.95	-0.18	0.29	1.97	40°06'11.627"N	104°53'31.607"W	0.38	TIE-ONTO MWD SURVEYS
1649.00	0.580	14.480	1648.94	-2.78	2.95	3.17	40°06'11.653"N	104°53'31.591"W	0.08	BEGIN BHI MWD+IFR SURVEYS
1739.00	0.680	6.180	1738.93	-3.74	3.92	3.34	40°06'11.663"N	104°53'31.589"W	0.15	
1829.00	2.930	343.200	1828.88	-6.50	6.65	2.73	40°06'11.690"N	104°53'31.597"W	2.58	
1919.00	4.430	327.180	1918.70	-11.75	11.78	0.18	40°06'11.740"N	104°53'31.630"W	2.01	
2009.00	6.300	321.390	2008.30	-18.79	18.56	-4.78	40°06'11.807"N	104°53'31.694"W	2.16	
2099.00	7.970	324.530	2097.60	-28.07	27.50	-11.49	40°06'11.896"N	104°53'31.780"W	1.90	
2189.00	8.900	329.630	2186.63	-39.52	38.59	-18.63	40°06'12.005"N	104°53'31.872"W	1.33	
2278.00	8.890	344.350	2274.57	-52.35	51.15	-23.96	40°06'12.129"N	104°53'31.940"W	2.55	
2368.00	10.010	348.860	2363.35	-66.89	65.52	-27.35	40°06'12.272"N	104°53'31.984"W	1.49	
2458.00	11.970	350.550	2451.69	-83.91	82.41	-30.39	40°06'12.438"N	104°53'32.023"W	2.21	
2548.00	13.120	349.780	2539.54	-103.32	101.66	-33.74	40°06'12.629"N	104°53'32.066"W	1.29	
2638.00	12.060	346.400	2627.38	-122.69	120.86	-37.76	40°06'12.818"N	104°53'32.118"W	1.43	
2728.00	10.890	343.320	2715.58	-140.20	138.14	-42.41	40°06'12.989"N	104°53'32.178"W	1.47	
2818.00	10.070	341.330	2804.08	-156.04	153.74	-47.37	40°06'13.143"N	104°53'32.242"W	1.00	
2908.00	9.590	338.720	2892.76	-170.74	168.18	-52.61	40°06'13.286"N	104°53'32.309"W	0.73	
2997.00	7.750	338.180	2980.73	-183.46	180.66	-57.53	40°06'13.409"N	104°53'32.372"W	2.07	
3087.00	7.440	339.180	3069.94	-194.76	191.74	-61.86	40°06'13.519"N	104°53'32.428"W	0.37	
3177.00	4.810	346.270	3159.42	-204.02	200.85	-64.83	40°06'13.609"N	104°53'32.466"W	3.04	
3267.00	3.360	356.160	3249.19	-210.36	207.15	-65.90	40°06'13.671"N	104°53'32.480"W	1.79	
3357.00	1.870	352.520	3339.10	-214.46	211.24	-66.27	40°06'13.711"N	104°53'32.485"W	1.66	
3447.00	0.480	266.180	3429.08	-215.92	212.67	-66.84	40°06'13.726"N	104°53'32.492"W	2.11	
3716.00	0.590	266.870	3698.07	-215.91	212.52	-69.34	40°06'13.724"N	104°53'32.524"W	0.04	
3806.00	1.050	263.570	3788.06	-215.86	212.40	-70.62	40°06'13.723"N	104°53'32.541"W	0.51	
3896.00	0.650	56.390	3878.06	-216.07	212.59	-71.02	40°06'13.725"N	104°53'32.546"W	1.84	
4166.00	0.300	354.530	4148.05	-217.55	214.14	-69.81	40°06'13.740"N	104°53'32.530"W	0.21	
4435.00	0.090	32.990	4417.05	-218.43	215.02	-69.76	40°06'13.749"N	104°53'32.530"W	0.09	
4795.00	0.400	182.510	4777.04	-217.41	214.00	-69.66	40°06'13.739"N	104°53'32.529"W	0.13	
5154.00	0.250	169.190	5136.04	-215.38	211.98	-69.57	40°06'13.719"N	104°53'32.527"W	0.05	
5513.00	0.560	93.140	5495.03	-214.42	211.11	-67.67	40°06'13.710"N	104°53'32.503"W	0.15	



Actual Wellpath Report

HUNZIKER 27C-4HZ AWP
Page 3 of 6



REFERENCE WELLPATH IDENTIFICATION			
Operator	KERR-MCGEE OIL & GAS ONSHORE LP (WA)	Slot	SLOT#12 HUNZIKER 27C-4HZ (433'FSL & 1638'FEL, SEC.28)
Area	COLORADO	Well	HUNZIKER 27C-4HZ
Field	WELD COUNTY (UTM/TRUE NORTH)	Wellbore	HUNZIKER 27C-4HZ AWB <13690>
Facility	SEC.28-T2N-R67W		

WELLPATH DATA (128 stations) † = interpolated/extrapolated station										
MD [ft]	Inclination [°]	Azimuth [°]	TVD [ft]	Vert Sect	North [ft]	East [ft]	Latitude	Longitude	DLS [°/100ft]	Comments
5603.00	0.490	110.310	5585.03	-214.22	210.96	-66.87	40°06'13.709"N	104°53'32.493"W	0.19	
5962.00	0.460	114.010	5944.01	-212.95	209.84	-64.12	40°06'13.698"N	104°53'32.457"W	0.01	
6322.00	0.580	185.030	6304.00	-210.49	207.43	-62.96	40°06'13.674"N	104°53'32.442"W	0.17	
6681.00	0.060	198.540	6663.00	-208.52	205.45	-63.18	40°06'13.654"N	104°53'32.445"W	0.15	
6951.00	0.260	129.090	6932.99	-207.97	204.93	-62.75	40°06'13.649"N	104°53'32.439"W	0.09	
6995.00	0.160	131.950	6976.99	-207.86	204.82	-62.62	40°06'13.648"N	104°53'32.438"W	0.23	
7040.00	2.870	163.540	7021.97	-206.72	203.70	-62.26	40°06'13.637"N	104°53'32.433"W	6.08	
7130.00	14.620	174.260	7110.78	-193.14	190.19	-60.48	40°06'13.503"N	104°53'32.410"W	13.12	
7220.00	21.740	180.990	7196.24	-165.13	162.18	-59.63	40°06'13.227"N	104°53'32.399"W	8.24	
7310.00	25.910	177.880	7278.55	-128.82	125.85	-59.19	40°06'12.868"N	104°53'32.394"W	4.84	
7400.00	32.860	176.370	7356.93	-84.69	81.78	-56.91	40°06'12.432"N	104°53'32.364"W	7.77	
7490.00	35.720	173.850	7431.28	-34.03	31.28	-52.55	40°06'11.933"N	104°53'32.308"W	3.55	
7579.00	44.640	172.170	7499.21	23.19	-25.65	-45.49	40°06'11.371"N	104°53'32.217"W	10.10	
7669.00	55.000	170.400	7557.20	91.51	-93.50	-35.01	40°06'10.700"N	104°53'32.083"W	11.61	
7759.00	61.010	173.170	7604.87	167.49	-169.01	-24.17	40°06'09.954"N	104°53'31.943"W	7.17	
7849.00	68.310	176.590	7643.38	248.70	-249.96	-16.99	40°06'09.154"N	104°53'31.851"W	8.81	
7939.00	77.520	174.530	7669.79	334.61	-335.63	-10.30	40°06'08.307"N	104°53'31.765"W	10.46	
8028.00	83.970	179.760	7684.11	422.37	-423.29	-5.96	40°06'07.441"N	104°53'31.709"W	9.28	
8056.00	85.430	180.830	7686.69	450.20	-451.17	-6.11	40°06'07.166"N	104°53'31.711"W	6.45	
8093.00†	86.676	180.505	7689.24	487.04	-488.08	-6.54	40°06'06.801"N	104°53'31.716"W	3.48	7" CASING POINT
8154.00	88.730	179.970	7691.68	547.88	-549.02	-6.79	40°06'06.198"N	104°53'31.719"W	3.48	
8244.00	88.550	179.670	7693.82	637.75	-639.00	-6.51	40°06'05.309"N	104°53'31.716"W	0.39	
8334.00	88.460	179.860	7696.17	727.61	-728.97	-6.14	40°06'04.420"N	104°53'31.711"W	0.23	
8423.00	88.920	179.420	7698.20	816.48	-817.94	-5.58	40°06'03.541"N	104°53'31.704"W	0.72	
8513.00	89.690	179.090	7699.30	906.40	-907.93	-4.41	40°06'02.652"N	104°53'31.689"W	0.93	
8603.00	89.440	178.090	7699.98	996.36	-997.89	-2.19	40°06'01.763"N	104°53'31.660"W	1.15	
8693.00	89.660	178.270	7700.69	1086.34	-1087.85	0.66	40°06'00.874"N	104°53'31.623"W	0.32	
8782.00	89.560	178.090	7701.29	1175.32	-1176.80	3.49	40°05'59.995"N	104°53'31.587"W	0.23	
8872.00	89.630	178.600	7701.93	1265.29	-1266.76	6.09	40°05'59.106"N	104°53'31.554"W	0.57	
8962.00	89.960	178.420	7702.25	1355.25	-1356.73	8.43	40°05'58.217"N	104°53'31.524"W	0.42	
9052.00	90.120	178.730	7702.19	1445.22	-1446.70	10.67	40°05'57.328"N	104°53'31.495"W	0.39	
9142.00	90.000	177.870	7702.09	1535.19	-1536.66	13.34	40°05'56.439"N	104°53'31.460"W	0.96	
9232.00	89.130	176.480	7702.78	1625.19	-1626.54	17.77	40°05'55.550"N	104°53'31.403"W	1.82	
9322.00	88.430	176.060	7704.69	1715.16	-1716.33	23.63	40°05'54.663"N	104°53'31.328"W	0.91	
9412.00	88.790	176.250	7706.87	1805.12	-1806.10	29.66	40°05'53.776"N	104°53'31.250"W	0.45	
9501.00	89.690	176.930	7708.06	1894.11	-1894.94	34.95	40°05'52.898"N	104°53'31.182"W	1.27	
9591.00	90.000	176.430	7708.30	1984.11	-1984.78	40.17	40°05'52.010"N	104°53'31.115"W	0.65	
9681.00	90.090	176.510	7708.23	2074.11	-2074.61	45.71	40°05'51.122"N	104°53'31.044"W	0.13	
9771.00	89.810	177.380	7708.31	2164.11	-2164.48	50.50	40°05'50.234"N	104°53'30.982"W	1.02	
9861.00	89.930	177.100	7708.51	2254.10	-2254.38	54.84	40°05'49.346"N	104°53'30.926"W	0.34	
9951.00	90.240	176.040	7708.38	2344.10	-2344.22	60.22	40°05'48.458"N	104°53'30.857"W	1.23	
10040.00	90.700	175.370	7707.65	2433.08	-2432.96	66.89	40°05'47.581"N	104°53'30.771"W	0.91	
10130.00	90.700	176.270	7706.55	2523.05	-2522.72	73.45	40°05'46.694"N	104°53'30.687"W	1.00	
10220.00	90.740	176.180	7705.42	2613.04	-2612.51	79.37	40°05'45.807"N	104°53'30.611"W	0.11	
10310.00	90.580	176.380	7704.38	2703.02	-2702.32	85.21	40°05'44.919"N	104°53'30.536"W	0.28	



Actual Wellpath Report

HUNZIKER 27C-4HZ AWP

Page 4 of 6



REFERENCE WELLPATH IDENTIFICATION			
Operator	KERR-MCGEE OIL & GAS ONSHORE LP (WA)	Slot	SLOT#12 HUNZIKER 27C-4HZ (433'FSL & 1638'FEL, SEC.28)
Area	COLORADO	Well	HUNZIKER 27C-4HZ
Field	WELD COUNTY (UTM/TRUE NORTH)	Wellbore	HUNZIKER 27C-4HZ AWB <13690>
Facility	SEC.28-T2N-R67W		

WELLPATH DATA (128 stations)										
MD [ft]	Inclination [°]	Azimuth [°]	TVD [ft]	Vert Sect [ft]	North [ft]	East [ft]	Latitude	Longitude	DLS ["/100ft]	Comments
10400.00	89.930	174.500	7703.98	2792.99	-2792.03	92.37	40°05'44.033"N	104°53'30.443"W	2.21	
10489.00	89.500	173.360	7704.42	2881.86	-2880.53	101.78	40°05'43.158"N	104°53'30.322"W	1.37	
10579.00	89.230	172.790	7705.42	2971.65	-2969.86	112.63	40°05'42.275"N	104°53'30.183"W	0.70	
10669.00	89.290	174.490	7706.58	3061.49	-3059.30	122.60	40°05'41.392"N	104°53'30.055"W	1.89	
10759.00	90.550	175.230	7706.71	3151.43	-3148.93	130.66	40°05'40.506"N	104°53'29.951"W	1.62	
10849.00	90.090	174.840	7706.21	3241.37	-3238.60	138.45	40°05'39.620"N	104°53'29.851"W	0.67	
10939.00	90.430	176.100	7705.80	3331.34	-3328.31	145.56	40°05'38.733"N	104°53'29.759"W	1.45	
11028.00	89.720	175.610	7705.68	3420.32	-3417.08	151.99	40°05'37.856"N	104°53'29.676"W	0.97	
11118.00	90.360	176.510	7705.62	3510.31	-3506.86	158.17	40°05'36.969"N	104°53'29.597"W	1.23	
11208.00	90.920	176.790	7704.61	3600.30	-3596.70	163.43	40°05'36.081"N	104°53'29.529"W	0.70	
11298.00	90.770	177.150	7703.28	3690.29	-3686.57	168.19	40°05'35.193"N	104°53'29.468"W	0.43	
11388.00	90.300	176.410	7702.44	3780.29	-3776.42	173.24	40°05'34.305"N	104°53'29.403"W	0.97	
11478.00	91.040	177.460	7701.39	3870.28	-3866.28	178.05	40°05'33.417"N	104°53'29.341"W	1.43	
11567.00	91.500	178.010	7699.42	3959.25	-3955.19	181.57	40°05'32.538"N	104°53'29.296"W	0.81	
11657.00	91.010	178.140	7697.45	4049.21	-4045.12	184.59	40°05'31.649"N	104°53'29.257"W	0.56	
11747.00	90.770	178.340	7696.05	4139.18	-4135.07	187.36	40°05'30.761"N	104°53'29.221"W	0.35	
11837.00	90.520	177.880	7695.04	4229.15	-4225.01	190.33	40°05'29.872"N	104°53'29.183"W	0.58	
11927.00	89.590	177.160	7694.95	4319.15	-4314.93	194.22	40°05'28.983"N	104°53'29.133"W	1.31	
12016.00	89.220	176.630	7695.88	4408.14	-4403.79	199.04	40°05'28.105"N	104°53'29.071"W	0.73	
12106.00	88.790	176.010	7697.44	4498.12	-4493.59	204.82	40°05'27.218"N	104°53'28.997"W	0.84	
12196.00	88.080	176.330	7699.90	4588.08	-4583.35	210.83	40°05'26.331"N	104°53'28.919"W	0.87	
12286.00	88.060	176.840	7702.93	4678.03	-4673.14	216.18	40°05'25.443"N	104°53'28.850"W	0.57	
12376.00	88.510	178.070	7705.62	4767.98	-4763.01	220.18	40°05'24.555"N	104°53'28.799"W	1.45	
12465.00	90.150	178.800	7706.66	4856.94	-4851.97	222.61	40°05'23.676"N	104°53'28.768"W	2.02	
12555.00	90.550	179.200	7706.11	4946.88	-4941.95	224.18	40°05'22.787"N	104°53'28.748"W	0.63	
12645.00	90.240	178.000	7705.49	5036.84	-5031.92	226.38	40°05'21.898"N	104°53'28.719"W	1.38	
12735.00	91.720	177.900	7703.95	5126.81	-5121.85	229.60	40°05'21.009"N	104°53'28.678"W	1.65	
12825.00	89.720	177.920	7702.82	5216.79	-5211.78	232.88	40°05'20.120"N	104°53'28.636"W	2.22	
12914.00	90.240	177.920	7702.85	5305.77	-5300.72	236.11	40°05'19.241"N	104°53'28.594"W	0.58	
13004.00	90.150	178.060	7702.55	5395.76	-5390.66	239.27	40°05'18.353"N	104°53'28.554"W	0.18	
13094.00	89.870	177.830	7702.53	5485.74	-5480.61	242.49	40°05'17.464"N	104°53'28.512"W	0.40	
13184.00	89.100	177.470	7703.34	5575.73	-5570.53	246.18	40°05'16.575"N	104°53'28.465"W	0.94	
13274.00	88.420	177.440	7705.29	5665.71	-5660.41	250.18	40°05'15.687"N	104°53'28.413"W	0.76	
13364.00	87.870	176.240	7708.20	5755.66	-5750.23	255.14	40°05'14.799"N	104°53'28.349"W	1.47	
13453.00	88.520	175.550	7711.00	5844.60	-5838.96	261.50	40°05'13.923"N	104°53'28.267"W	1.06	
13543.00	89.840	174.960	7712.29	5934.55	-5928.64	268.95	40°05'13.036"N	104°53'28.172"W	1.61	
13635.00	89.630	174.830	7712.72	6026.49	-6020.27	277.13	40°05'12.131"N	104°53'28.066"W	0.27	LAST BHI MWD+IFR SURVEYS
13690.00	89.630	174.830	7713.07	6081.45	-6075.04	282.09	40°05'11.589"N	104°53'28.003"W	0.00	PROJECTION TO BIT



Actual Wellpath Report

HUNZIKER 27C-4HZ AWP
Page 5 of 6



REFERENCE WELLPATH IDENTIFICATION			
Operator	KERR-MCGEE OIL & GAS ONSHORE LP (WA)	Slot	SLOT#12 HUNZIKER 27C-4HZ (433'FSL & 1638'FEL, SEC.28)
Area	COLORADO	Well	HUNZIKER 27C-4HZ
Field	WELD COUNTY (UTM/TRUE NORTH)	Wellbore	HUNZIKER 27C-4HZ AWB <13690>
Facility	SEC.28-T2N-R67W		

HOLE & CASING SECTIONS - Ref Wellbore: HUNZIKER 27C-4HZ AWB <13690> Ref Wellpath: HUNZIKER 27C-4HZ AWP									
String/Diameter	Start MD [ft]	End MD [ft]	Interval [ft]	Start TVD [ft]	End TVD [ft]	Start N/S [ft]	Start E/W [ft]	End N/S [ft]	End E/W [ft]
13.5in Open Hole	20.00	1349.00	1329.00	20.00	1348.95	0.00	0.00	0.57	2.17
9.625in Casing Surface	20.00	1335.00	1315.00	20.00	1334.95	0.00	0.00	0.49	2.11
8.75in Open Hole	1349.00	8105.00	6756.00	1348.95	7689.89	0.57	2.17	-500.06	-6.63
7in Open Hole	20.00	8093.00	8073.00	20.00	7689.24	0.00	0.00	-488.08	-6.54
6.125in Open Hole	8105.00	13690.00	5585.00	7689.89	7713.07	-500.06	-6.63	-6075.04	282.09

TARGETS								
Name	TVD [ft]	North [ft]	East [ft]	Grid East [US ft]	Grid North [US ft]	Latitude	Longitude	Shape
SEC.04-T1N-R67W SECTION LINES	5069.00	-0.68	90.36	1670673.34	14564341.34	40°06'11.617"N	104°53'30.469"W	polygon
SEC.28-T2N-R67W SECTION LINES	5069.00	-0.68	90.36	1670673.34	14564341.34	40°06'11.617"N	104°53'30.469"W	polygon
SEC.33-T2N-R67W SECTION LINES	5069.00	-0.68	90.36	1670673.34	14564341.34	40°06'11.617"N	104°53'30.469"W	polygon
HUNZIKER 27C-4HZ BHL ON PLAT REV-1 (360'FNL & 1450'FEL, SEC.04)	7699.00	-6076.00	135.15	1670725.48	14558268.52	40°05'11.580"N	104°53'29.893"W	point
HUNZIKER 27C-4HZ BHL REV-3 (360'FNL & 1304'FEL, SEC.04)	7699.00	-6076.00	281.00	1670871.28	14558268.70	40°05'11.580"N	104°53'28.017"W	point
HUNZIKER 27C-4HZ LANDBOX	7699.00	0.00	0.00	1670583.02	14564341.91	40°06'11.624"N	104°53'31.632"W	polygon

WELLPATH COMPOSITION - Ref Wellbore: HUNZIKER 27C-4HZ AWB <13690> Ref Wellpath: HUNZIKER 27C-4HZ AWP					
Start MD [ft]	End MD [ft]	Positional Uncertainty Model	Log Name/Comment	Wellbore	
20.00	1300.00	ISCWSA MWD, Rev. 2 (Standard)	CATHEDRAL MWD SURVEYS 13.5" <126-1300>	HUNZIKER 27C-4HZ AWB <13690>	
1300.00	8056.00	Custom APC ISCWSA REV 2 MWD+IFR1+SC (approximation)	BHI MWD+IFR SURVEYS 8.75" <1649-8056>	HUNZIKER 27C-4HZ AWB <13690>	
8056.00	13635.00	Custom APC ISCWSA REV 2 MWD+IFR1+SC (approximation)	BHI MWD+IFR SURVEYS 6.125" <8154-13635>	HUNZIKER 27C-4HZ AWB <13690>	
13635.00	13690.00	Blind Drilling (std)	Projection to bit	HUNZIKER 27C-4HZ AWB <13690>	



Actual Wellpath Report

HUNZIKER 27C-4HZ AWP
Page 6 of 6



REFERENCE WELLPATH IDENTIFICATION			
Operator	KERR-MCGEE OIL & GAS ONSHORE LP (WA)	Slot	SLOT#12 HUNZIKER 27C-4HZ (433'FSL & 1638'FEL, SEC.28)
Area	COLORADO	Well	HUNZIKER 27C-4HZ
Field	WELD COUNTY (UTM/TRUE NORTH)	Wellbore	HUNZIKER 27C-4HZ AWB <13690>
Facility	SEC.28-T2N-R67W		

WELLPATH COMMENTS					
MD [ft]	Inclination [°]	Azimuth [°]	TVD [ft]		Comment
126.00	0.500	300.700	126.00		BEGIN MWD SURVEYS
1300.00	0.400	38.600	1299.95		TIE-ONTO MWD SURVEYS
1649.00	0.580	14.480	1648.94		BEGIN BHI MWD+IFR SURVEYS
8093.00	86.676	180.505	7689.24		7" CASING POINT
13635.00	89.630	174.830	7712.72		LAST BHI MWD+IFR SURVEYS
13690.00	89.630	174.830	7713.07		PROJECTION TO BIT