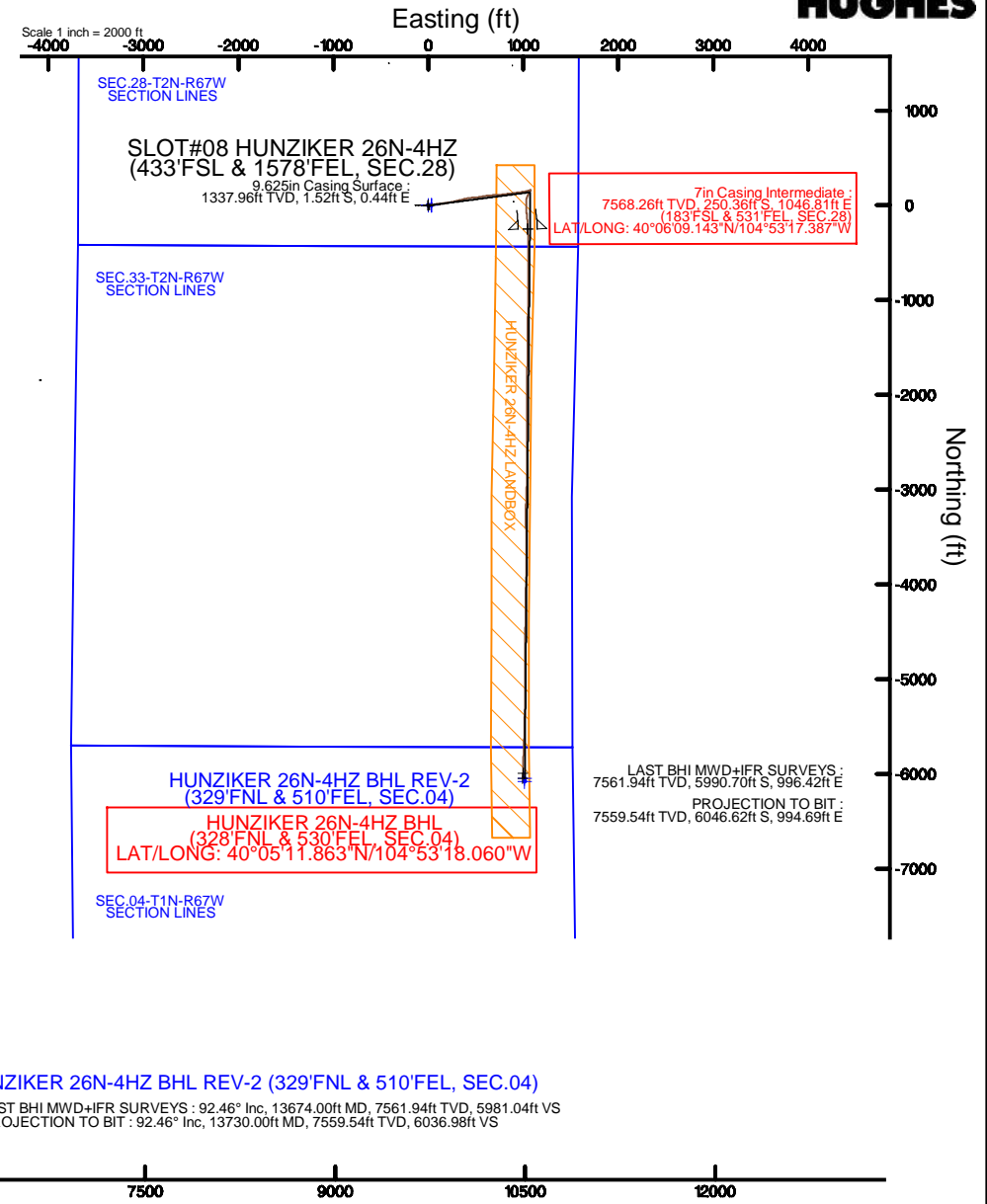
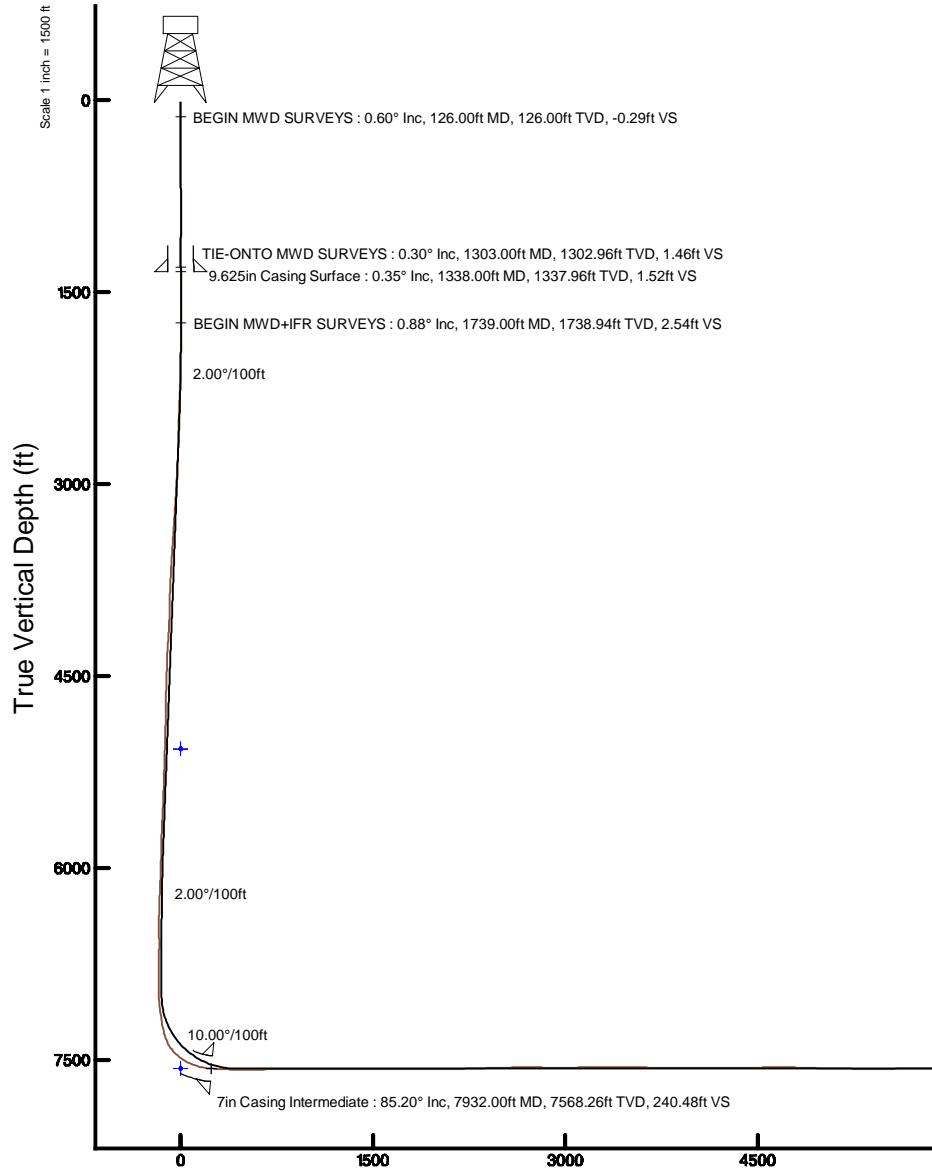


# KERR-MCGEE OIL & GAS ONSHORE LP (LAMBERT STATE PLANE COORD)

Location: COLORADO Slot: SLOT#08 HUNZIKER 26N-4HZ (433'FSL & 1578'FEL, SEC.28)  
 Field: WELD COUNTY (KERR MCGEE) Well: HUNZIKER 26N-4HZ  
 Facility: SEC.28-T2N-R67W Wellbore: HUNZIKER 26N-4HZ PWB

Plot reference wellpath is HUNZIKER 26N-4HZ (REV-B.0) PWP

True vertical depths are referenced to PRECISION 460 (20'KB) (RKB)	Grid System: NAD83 / Lambert Colorado SP, Northern Zone (501), US feet
Measured depths are referenced to PRECISION 460 (20'KB) (RKB)	North Reference: True north
PRECISION 460 (20'KB) (RKB) to Mean Sea Level: 5069 feet	Scale: True distance
Mean Sea Level to Mud line (At Slot: SLOT#08 HUNZIKER 26N-4HZ (433'FSL & 1578'FEL, SEC.28)): 0 feet	Depths are in feet
Coordinates are in feet referenced to Slot	Created by: amarcar on 01/Apr/2015



Vertical Section (ft)  
 Azimuth 180.54° with reference 0.00 N, 0.00 E

Scale 1 inch = 1500 ft

REFERENCE WELLPATH IDENTIFICATION			
Operator	KERR-MCGEE OIL & GAS ONSHORE LP (LAMBERT STATE PLANE COORD)	Slot	SLOT#08 HUNZIKER 26N-4HZ (433'FSL & 1578'FEL, SEC.28)
Area	COLORADO	Well	HUNZIKER 26N-4HZ
Field	WELD COUNTY (KERR MCGEE)	Wellbore	HUNZIKER 26N-4HZ AWB <13730>
Facility	SEC.28-T2N-R67W		

REPORT SETUP INFORMATION			
Projection System	NAD83 / Lambert Colorado SP, Northern Zone (501), US feet	Software System	WellArchitect® 4.1.1
North Reference	True	User	Amarcar
Scale	0.99996	Report Generated	01/Apr/2015 at 14:44
Convergence at slot	0.39° East	Database/Source file	WellArchitectDB/HUNZIKER_26N-4HZ_AWB_13730_.xml

WELLPATH LOCATION						
	Local coordinates		Grid coordinates		Geographic coordinates	
	North[ft]	East[ft]	Easting[US ft]	Northing[US ft]	Latitude	Longitude
Slot Location	-4194.12	-930.14	3170100.80	1281033.16	40°06'11.617"N	104°53'30.858"W
Facility Reference Pt			3171001.96	1285233.41	40°06'53.064"N	104°53'18.888"W
Field Reference Pt			3197771.84	1268891.29	40°04'09.600"N	104°47'36.000"W

WELLPATH DATUM			
Calculation method	Minimum curvature	PRECISION 460 (20'KB) (RKB) to Facility Vertical Datum	5069.00ft
Horizontal Reference Pt	Slot	PRECISION 460 (20'KB) (RKB) to Mean Sea Level	5069.00ft
Vertical Reference Pt	PRECISION 460 (20'KB) (RKB)	PRECISION 460 (20'KB) (RKB) to Mud Line at Slot (SLOT#08 HUNZIKER 26N-4HZ (433'FSL & 1578'FEL, SEC.28))	5069.00ft
MD Reference Pt	PRECISION 460 (20'KB) (RKB)	Section Origin	N 0.00, E 0.00 ft
Field Vertical Reference	Mean Sea Level	Section Azimuth	180.54°

REFERENCE WELLPATH IDENTIFICATION			
Operator	KERR-MCGEE OIL & GAS ONSHORE LP (LAMBERT STATE PLANE COORD)	Slot	SLOT#08 HUNZIKER 26N-4HZ (433'FSL & 1578'FEL, SEC.28)
Area	COLORADO	Well	HUNZIKER 26N-4HZ
Field	WELD COUNTY (KERR MCGEE)	Wellbore	HUNZIKER 26N-4HZ AWB <13730>
Facility	SEC.28-T2N-R67W		

WELLPATH DATA (119 stations) † = interpolated/extrapolated station										
MD [ft]	Inclination [°]	Azimuth [°]	TVD [ft]	Vert Sect [ft]	North [ft]	East [ft]	Latitude	Longitude	DLS ["/100ft]	Comments
0.00†	0.000	301.800	0.00	0.00	0.00	0.00	40°06'11.617"N	104°53'30.858"W	0.00	
20.00	0.000	301.800	20.00	0.00	0.00	0.00	40°06'11.617"N	104°53'30.858"W	0.00	
126.00	0.600	301.800	126.00	-0.29	0.29	-0.47	40°06'11.620"N	104°53'30.864"W	0.57	BEGIN MWD SURVEYS
213.00	0.100	325.000	213.00	-0.59	0.59	-0.90	40°06'11.623"N	104°53'30.870"W	0.59	
301.00	0.400	311.200	301.00	-0.85	0.86	-1.18	40°06'11.625"N	104°53'30.873"W	0.35	
390.00	0.300	178.400	389.99	-0.82	0.83	-1.40	40°06'11.625"N	104°53'30.876"W	0.72	
480.00	0.500	154.400	479.99	-0.23	0.24	-1.23	40°06'11.619"N	104°53'30.874"W	0.29	
575.00	0.600	138.600	574.99	0.51	-0.50	-0.72	40°06'11.612"N	104°53'30.867"W	0.19	
670.00	0.800	126.600	669.98	1.27	-1.27	0.14	40°06'11.604"N	104°53'30.856"W	0.26	
765.00	0.400	183.000	764.98	1.99	-2.00	0.66	40°06'11.597"N	104°53'30.850"W	0.70	
861.00	0.400	173.100	860.97	2.66	-2.67	0.68	40°06'11.591"N	104°53'30.849"W	0.07	
956.00	0.600	28.700	955.97	2.55	-2.56	0.96	40°06'11.592"N	104°53'30.846"W	1.00	
1049.00	0.600	4.500	1048.97	1.64	-1.65	1.23	40°06'11.601"N	104°53'30.842"W	0.27	
1143.00	0.300	290.000	1142.96	1.06	-1.07	1.04	40°06'11.606"N	104°53'30.845"W	0.63	
1238.00	0.300	182.100	1237.96	1.23	-1.24	0.79	40°06'11.605"N	104°53'30.848"W	0.51	
1303.00	0.300	250.800	1302.96	1.46	-1.46	0.63	40°06'11.603"N	104°53'30.850"W	0.52	TIE-ONTO MWD SURVEYS
1739.00	0.880	258.520	1738.94	2.54	-2.50	-3.73	40°06'11.592"N	104°53'30.906"W	0.13	BEGIN MWD+IFR SURVEYS
1829.00	1.020	85.150	1828.93	2.61	-2.57	-3.61	40°06'11.592"N	104°53'30.904"W	2.11	
1919.00	2.620	75.810	1918.89	2.01	-2.00	-0.82	40°06'11.597"N	104°53'30.869"W	1.80	
2009.00	4.260	85.320	2008.72	1.18	-1.22	4.51	40°06'11.605"N	104°53'30.800"W	1.92	
2099.00	6.870	81.420	2098.29	0.02	-0.15	13.16	40°06'11.616"N	104°53'30.689"W	2.93	
2189.00	8.450	76.150	2187.49	-2.47	2.24	24.91	40°06'11.639"N	104°53'30.537"W	1.92	
2278.00	9.710	78.600	2275.37	-5.65	5.29	38.61	40°06'11.669"N	104°53'30.361"W	1.48	
2368.00	10.720	78.900	2363.94	-8.91	8.40	54.27	40°06'11.700"N	104°53'30.160"W	1.12	
2458.00	12.440	81.460	2452.11	-12.13	11.45	72.07	40°06'11.730"N	104°53'29.931"W	1.99	
2548.00	13.500	82.740	2539.81	-15.08	14.22	92.08	40°06'11.757"N	104°53'29.673"W	1.22	
2638.00	14.290	86.390	2627.18	-17.31	16.24	113.58	40°06'11.778"N	104°53'29.396"W	1.31	
2727.00	16.000	83.410	2713.08	-19.63	18.34	136.73	40°06'11.798"N	104°53'29.098"W	2.11	
2907.00	16.180	82.520	2886.03	-26.21	24.45	186.24	40°06'11.859"N	104°53'28.461"W	0.17	
3087.00	16.630	78.220	3058.71	-35.20	32.98	236.33	40°06'11.943"N	104°53'27.817"W	0.72	

REFERENCE WELLPATH IDENTIFICATION			
Operator	KERR-MCGEE OIL & GAS ONSHORE LP (LAMBERT STATE PLANE COORD)	Slot	SLOT#08 HUNZIKER 26N-4HZ (433'FSL & 1578'FEL, SEC.28)
Area	COLORADO	Well	HUNZIKER 26N-4HZ
Field	WELD COUNTY (KERR MCGEE)	Wellbore	HUNZIKER 26N-4HZ AWB <13730>
Facility	SEC.28-T2N-R67W		

WELLPATH DATA (119 stations)										
MD [ft]	Inclination [°]	Azimuth [°]	TVD [ft]	Vert Sect [ft]	North [ft]	East [ft]	Latitude	Longitude	DLS ["/100ft]	Comments
3266.00	15.900	76.380	3230.55	-46.67	43.98	285.23	40°06'12.052"N	104°53'27.187"W	0.50	
3446.00	15.920	77.310	3403.65	-58.35	55.21	333.28	40°06'12.163"N	104°53'26.569"W	0.14	
3625.00	13.960	74.910	3576.59	-69.79	66.23	378.08	40°06'12.271"N	104°53'25.992"W	1.15	
3715.00	14.920	78.110	3663.75	-75.21	71.44	399.90	40°06'12.323"N	104°53'25.712"W	1.39	
3805.00	15.230	82.330	3750.66	-79.39	75.40	422.95	40°06'12.362"N	104°53'25.415"W	1.27	
3895.00	16.010	81.860	3837.33	-82.95	78.74	446.95	40°06'12.395"N	104°53'25.106"W	0.88	
3985.00	16.490	88.320	3923.74	-85.32	80.87	472.01	40°06'12.416"N	104°53'24.784"W	2.08	
4075.00	17.890	88.140	4009.72	-86.39	81.69	498.60	40°06'12.424"N	104°53'24.442"W	1.56	
4165.00	16.520	77.760	4095.71	-89.80	84.86	524.92	40°06'12.456"N	104°53'24.103"W	3.73	
4254.00	17.630	78.550	4180.79	-95.40	90.22	550.50	40°06'12.508"N	104°53'23.774"W	1.27	
4344.00	17.790	78.790	4266.52	-101.03	95.59	577.35	40°06'12.562"N	104°53'23.428"W	0.20	
4434.00	18.100	85.420	4352.15	-105.08	99.38	604.77	40°06'12.599"N	104°53'23.075"W	2.29	
4614.00	15.510	83.090	4524.45	-110.70	104.51	656.54	40°06'12.650"N	104°53'22.409"W	1.49	
4793.00	14.680	87.380	4697.28	-115.05	108.43	702.96	40°06'12.688"N	104°53'21.812"W	0.78	
4883.00	13.630	86.620	4784.55	-116.40	109.58	724.94	40°06'12.700"N	104°53'21.529"W	1.18	
4973.00	14.130	86.060	4871.92	-117.99	110.96	746.49	40°06'12.713"N	104°53'21.251"W	0.58	
5063.00	12.930	84.880	4959.42	-119.84	112.61	767.48	40°06'12.730"N	104°53'20.981"W	1.37	
5153.00	13.950	82.480	5046.95	-122.35	114.93	788.26	40°06'12.753"N	104°53'20.714"W	1.29	
5242.00	14.760	84.090	5133.18	-125.13	117.50	810.17	40°06'12.778"N	104°53'20.432"W	1.01	
5332.00	14.220	83.830	5220.31	-127.71	119.87	832.57	40°06'12.801"N	104°53'20.144"W	0.60	
5422.00	12.930	81.840	5307.80	-130.52	122.48	853.53	40°06'12.827"N	104°53'19.874"W	1.52	
5602.00	15.320	82.820	5482.34	-136.76	128.32	897.06	40°06'12.885"N	104°53'19.314"W	1.33	
5692.00	14.360	80.850	5569.34	-140.24	131.58	919.87	40°06'12.917"N	104°53'19.020"W	1.20	
5782.00	16.310	77.290	5656.13	-145.02	136.13	943.22	40°06'12.962"N	104°53'18.720"W	2.41	
5872.00	14.910	88.120	5742.83	-148.40	139.29	967.13	40°06'12.993"N	104°53'18.412"W	3.59	
5961.00	13.120	84.390	5829.18	-149.97	140.66	988.63	40°06'13.007"N	104°53'18.135"W	2.25	
6051.00	11.500	81.320	5917.11	-152.50	143.01	1007.66	40°06'13.030"N	104°53'17.890"W	1.94	
6141.00	8.450	78.780	6005.74	-155.29	145.65	1023.02	40°06'13.056"N	104°53'17.693"W	3.42	
6231.00	7.500	75.080	6094.87	-158.20	148.45	1035.19	40°06'13.084"N	104°53'17.536"W	1.20	
6321.00	6.510	68.470	6184.20	-161.68	151.83	1045.61	40°06'13.117"N	104°53'17.402"W	1.42	

REFERENCE WELLPATH IDENTIFICATION			
Operator	KERR-MCGEE OIL & GAS ONSHORE LP (LAMBERT STATE PLANE COORD)	Slot	SLOT#08 HUNZIKER 26N-4HZ (433'FSL & 1578'FEL, SEC.28)
Area	COLORADO	Well	HUNZIKER 26N-4HZ
Field	WELD COUNTY (KERR MCGEE)	Wellbore	HUNZIKER 26N-4HZ AWB <13730>
Facility	SEC.28-T2N-R67W		

WELLPATH DATA (119 stations) † = interpolated/extrapolated station										
MD [ft]	Inclination [°]	Azimuth [°]	TVD [ft]	Vert Sect [ft]	North [ft]	East [ft]	Latitude	Longitude	DLS [°/100ft]	Comments
6411.00	5.770	65.110	6273.68	-165.54	155.61	1054.46	40°06'13.155"N	104°53'17.288"W	0.91	
6500.00	3.560	74.040	6362.38	-168.25	158.25	1061.17	40°06'13.181"N	104°53'17.202"W	2.61	
6590.00	3.470	94.220	6452.21	-168.87	158.82	1066.58	40°06'13.186"N	104°53'17.132"W	1.37	
6680.00	2.890	100.200	6542.07	-168.31	158.22	1071.53	40°06'13.180"N	104°53'17.068"W	0.74	
6770.00	0.700	58.560	6632.03	-168.22	158.10	1074.23	40°06'13.179"N	104°53'17.034"W	2.68	
6859.00	0.540	82.440	6721.02	-168.57	158.44	1075.11	40°06'13.183"N	104°53'17.022"W	0.34	
7040.00	1.100	12.360	6902.01	-170.39	160.25	1076.33	40°06'13.200"N	104°53'17.007"W	0.58	
7130.00	2.960	236.980	6991.97	-169.95	159.83	1074.56	40°06'13.196"N	104°53'17.029"W	4.25	
7220.00	7.420	205.520	7081.59	-163.39	153.32	1070.11	40°06'13.132"N	104°53'17.087"W	5.70	
7310.00	8.860	206.860	7170.69	-151.91	141.89	1064.47	40°06'13.019"N	104°53'17.159"W	1.61	
7400.00	12.140	209.300	7259.17	-137.40	127.45	1056.71	40°06'12.876"N	104°53'17.259"W	3.68	
7443.00	17.980	207.750	7300.67	-127.53	117.62	1051.40	40°06'12.779"N	104°53'17.327"W	13.61	
7488.00	24.220	204.790	7342.64	-112.92	103.08	1044.29	40°06'12.635"N	104°53'17.419"W	14.06	
7532.00	31.990	197.690	7381.43	-93.52	83.75	1036.95	40°06'12.444"N	104°53'17.513"W	19.20	
7577.00	38.010	189.140	7418.30	-68.39	58.67	1031.12	40°06'12.197"N	104°53'17.589"W	17.23	
7622.00	44.860	179.840	7452.04	-38.76	29.06	1028.95	40°06'11.904"N	104°53'17.616"W	20.43	
7667.00	52.400	176.140	7481.77	-5.06	-4.65	1030.20	40°06'11.571"N	104°53'17.600"W	17.85	
7712.00	58.950	176.940	7507.13	32.00	-41.73	1032.43	40°06'11.204"N	104°53'17.572"W	14.63	
7757.00	65.730	175.350	7528.01	71.71	-81.47	1035.13	40°06'10.812"N	104°53'17.537"W	15.39	
7802.00	72.000	174.150	7544.23	113.45	-123.24	1038.98	40°06'10.399"N	104°53'17.487"W	14.15	
7847.00	77.130	174.670	7556.20	156.56	-166.40	1043.20	40°06'09.972"N	104°53'17.433"W	11.45	
7902.00	83.700	178.950	7565.36	210.64	-220.51	1046.19	40°06'09.438"N	104°53'17.395"W	14.20	
7932.00†	85.200	178.679	7568.26	240.48	-250.36	1046.81	40°06'09.143"N	104°53'17.387"W	5.08	7" CASING POINT
7973.00	87.250	178.310	7570.96	281.36	-291.25	1047.89	40°06'08.739"N	104°53'17.373"W	5.08	
8063.00	88.450	179.210	7574.34	371.25	-381.17	1049.83	40°06'07.850"N	104°53'17.348"W	1.67	
8153.00	90.270	179.190	7575.34	461.22	-471.15	1051.09	40°06'06.961"N	104°53'17.332"W	2.02	
8242.00	90.150	179.530	7575.01	550.20	-560.14	1052.08	40°06'06.081"N	104°53'17.319"W	0.41	
8332.00	90.270	179.770	7574.68	640.19	-650.14	1052.63	40°06'05.192"N	104°53'17.312"W	0.30	
8422.00	90.240	179.950	7574.28	730.18	-740.14	1052.85	40°06'04.303"N	104°53'17.309"W	0.20	
8512.00	90.270	180.470	7573.88	820.18	-830.14	1052.52	40°06'03.413"N	104°53'17.314"W	0.58	

REFERENCE WELLPATH IDENTIFICATION			
Operator	KERR-MCGEE OIL & GAS ONSHORE LP (LAMBERT STATE PLANE COORD)	Slot	SLOT#08 HUNZIKER 26N-4HZ (433'FSL & 1578'FEL, SEC.28)
Area	COLORADO	Well	HUNZIKER 26N-4HZ
Field	WELD COUNTY (KERR MCGEE)	Wellbore	HUNZIKER 26N-4HZ AWB <13730>
Facility	SEC.28-T2N-R67W		

WELLPATH DATA (119 stations)										
MD [ft]	Inclination [°]	Azimuth [°]	TVD [ft]	Vert Sect [ft]	North [ft]	East [ft]	Latitude	Longitude	DLS [°/100ft]	Comments
8691.00	90.120	180.800	7573.27	999.18	-1009.12	1050.54	40°06'01.644"N	104°53'17.339"W	0.20	
8871.00	89.590	180.630	7573.73	1179.17	-1189.11	1048.29	40°05'59.866"N	104°53'17.368"W	0.31	
9051.00	90.240	180.120	7574.00	1359.17	-1369.10	1047.11	40°05'58.087"N	104°53'17.383"W	0.46	
9230.00	89.870	181.010	7573.83	1538.17	-1548.09	1045.35	40°05'56.318"N	104°53'17.406"W	0.54	
9410.00	90.450	181.490	7573.32	1718.15	-1728.05	1041.42	40°05'54.540"N	104°53'17.457"W	0.42	
9590.00	90.340	180.230	7572.08	1898.14	-1908.02	1038.72	40°05'52.761"N	104°53'17.492"W	0.70	
9769.00	90.030	179.780	7571.50	2077.13	-2087.02	1038.71	40°05'50.993"N	104°53'17.492"W	0.31	
9949.00	92.000	180.340	7568.32	2257.09	-2266.98	1038.52	40°05'49.214"N	104°53'17.495"W	1.14	
10129.00	91.700	179.740	7562.50	2436.99	-2446.88	1038.39	40°05'47.436"N	104°53'17.496"W	0.37	
10309.00	90.490	179.530	7559.06	2616.93	-2626.84	1039.54	40°05'45.658"N	104°53'17.482"W	0.68	
10488.00	89.290	180.580	7559.41	2795.92	-2805.84	1039.37	40°05'43.889"N	104°53'17.484"W	0.89	
10668.00	90.120	182.250	7560.33	2975.89	-2985.77	1034.92	40°05'42.111"N	104°53'17.541"W	1.04	
10848.00	90.800	182.310	7558.89	3155.80	-3165.62	1027.76	40°05'40.334"N	104°53'17.633"W	0.38	
11117.00	89.840	176.870	7557.39	3424.65	-3434.51	1029.69	40°05'37.676"N	104°53'17.609"W	2.05	
11297.00	89.100	180.170	7559.05	3604.50	-3614.41	1034.33	40°05'35.899"N	104°53'17.549"W	1.88	
11476.00	89.810	180.800	7560.75	3783.49	-3793.40	1032.82	40°05'34.130"N	104°53'17.569"W	0.53	
11656.00	90.030	181.200	7561.01	3963.49	-3973.37	1029.68	40°05'32.351"N	104°53'17.609"W	0.25	
11836.00	89.470	180.800	7561.79	4143.48	-4153.34	1026.54	40°05'30.573"N	104°53'17.650"W	0.38	
12015.00	90.370	181.000	7562.04	4322.47	-4332.31	1023.72	40°05'28.804"N	104°53'17.686"W	0.52	
12285.00	91.020	180.240	7558.77	4592.45	-4602.28	1020.80	40°05'26.136"N	104°53'17.724"W	0.37	
12464.00	88.730	180.760	7559.16	4771.44	-4781.26	1019.24	40°05'24.368"N	104°53'17.744"W	1.31	
12644.00	88.110	180.300	7564.12	4951.37	-4961.18	1017.58	40°05'22.590"N	104°53'17.765"W	0.43	
12823.00	89.190	180.350	7568.34	5130.31	-5140.12	1016.56	40°05'20.821"N	104°53'17.779"W	0.60	
13003.00	89.500	180.070	7570.39	5310.30	-5320.11	1015.90	40°05'19.043"N	104°53'17.787"W	0.23	
13183.00	90.550	181.960	7570.32	5490.28	-5500.07	1012.71	40°05'17.264"N	104°53'17.828"W	1.20	
13362.00	90.400	181.950	7568.83	5669.22	-5678.96	1006.61	40°05'15.496"N	104°53'17.907"W	0.08	
13542.00	91.260	181.870	7566.22	5849.15	-5858.84	1000.61	40°05'13.719"N	104°53'17.984"W	0.48	
13674.00	92.460	181.770	7561.94	5981.04	-5990.70	996.42	40°05'12.416"N	104°53'18.038"W	0.91	LAST BHI MWD+IFR SURVEYS
13730.00	92.460	181.770	7559.54	6036.98	-6046.62	994.69	40°05'11.863"N	104°53'18.060"W	0.00	PROJECTION TO BIT

HOLE & CASING SECTIONS - Ref Wellbore: HUNZIKER 26N-4HZ AWB <13730> Ref Wellpath: HUNZIKER 26N-4HZ AWP									
String/Diameter	Start MD [ft]	End MD [ft]	Interval [ft]	Start TVD [ft]	End TVD [ft]	Start N/S [ft]	Start E/W [ft]	End N/S [ft]	End E/W [ft]
13.5in Open Hole	20.00	1348.00	1328.00	20.00	1347.96	0.00	0.00	-1.54	0.38
9.625in Casing Surface	20.00	1338.00	1318.00	20.00	1337.96	0.00	0.00	-1.52	0.44
8.75in Open Hole	1348.00	7946.00	6598.00	1347.96	7569.35	-1.54	0.38	-264.31	1047.15
7in Casing Intermediate	20.00	7932.00	7912.00	20.00	7568.26	0.00	0.00	-250.36	1046.81
6.125in Open Hole	7946.00	13730.00	5784.00	7569.35	7559.54	-264.31	1047.15	-6046.62	994.69

TARGETS								
Name	TVD [ft]	North [ft]	East [ft]	Grid East [US ft]	Grid North [US ft]	Latitude	Longitude	Shape
SEC.04-T1N-R67W SECTION LINES	5069.00	0.02	30.21	3170131.01	1281033.39	40°06'11.617"N	104°53'30.469"W	polygon
SEC.28-T2N-R67W SECTION LINES	5069.00	0.02	30.21	3170131.01	1281033.39	40°06'11.617"N	104°53'30.469"W	polygon
SEC.33-T2N-R67W SECTION LINES	5069.00	0.02	30.21	3170131.01	1281033.39	40°06'11.617"N	104°53'30.469"W	polygon
HUNZIKER 26N-4HZ BHL ON PLAT REV-1 (360'FNL & 510'FEL, SEC.04)	7567.00	-6078.92	1015.15	3171157.57	1274961.60	40°05'11.544"N	104°53'17.797"W	point
HUNZIKER 26N-4HZ BHL REV-2 (329'FNL & 510'FEL, SEC.04)	7567.00	-6047.92	1015.15	3171157.35	1274992.60	40°05'11.850"N	104°53'17.797"W	point
HUNZIKER 26N-4HZ LANDBOX	7567.00	0.00	0.00	3170100.80	1281033.16	40°06'11.617"N	104°53'30.858"W	polygon

REFERENCE WELLPATH IDENTIFICATION			
Operator	KERR-MCGEE OIL & GAS ONSHORE LP (LAMBERT STATE PLANE COORD)	Slot	SLOT#08 HUNZIKER 26N-4HZ (433'FSL & 1578'FEL, SEC.28)
Area	COLORADO	Well	HUNZIKER 26N-4HZ
Field	WELD COUNTY (KERR MCGEE)	Wellbore	HUNZIKER 26N-4HZ AWB <13730>
Facility	SEC.28-T2N-R67W		

WELLPATH COMPOSITION - Ref Wellbore: HUNZIKER 26N-4HZ AWB <13730>    Ref Wellpath: HUNZIKER 26N-4HZ AWP				
Start MD [ft]	End MD [ft]	Positional Uncertainty Model	Log Name/Comment	Wellbore
20.00	1303.00	ISCWSA MWD, Rev. 2 (Standard)	CATHEDRAL MWD SURVEYS 13.5" <126-1303>	HUNZIKER 26N-4HZ AWB <13730>
1303.00	7902.00	ISCWSA MWD, Rev. 2, axial magnetic correction (Standard) (MagVAR IFR Wattenberg)	BHI MWD+IFR SURVEYS 8.75" <1739-7902>	HUNZIKER 26N-4HZ AWB <13730>
7902.00	13674.00	ISCWSA MWD, Rev. 2, axial magnetic correction (Standard) (MagVAR IFR Wattenberg)	BHI MWD+IFR SURVEYS 6.125" <7973-13674>	HUNZIKER 26N-4HZ AWB <13730>
13674.00	13730.00	Blind Drilling (std)	Projection to bit	HUNZIKER 26N-4HZ AWB <13730>

REFERENCE WELLPATH IDENTIFICATION			
Operator	KERR-MCGEE OIL & GAS ONSHORE LP (LAMBERT STATE PLANE COORD)	Slot	SLOT#08 HUNZIKER 26N-4HZ (433'FSL & 1578'FEL, SEC.28)
Area	COLORADO	Well	HUNZIKER 26N-4HZ
Field	WELD COUNTY (KERR MCGEE)	Wellbore	HUNZIKER 26N-4HZ AWB <13730>
Facility	SEC.28-T2N-R67W		

WELLPATH COMMENTS					
MD [ft]	Inclination [°]	Azimuth [°]	TVD [ft]	Comment	
126.00	0.600	301.800	126.00	BEGIN MWD SURVEYS	
1303.00	0.300	250.800	1302.96	TIE-ONTO MWD SURVEYS	
1739.00	0.880	258.520	1738.94	BEGIN MWD+IFR SURVEYS	
7932.00	85.200	178.679	7568.26	7" CASING POINT	
13674.00	92.460	181.770	7561.94	LAST BHI MWD+IFR SURVEYS	
13730.00	92.460	181.770	7559.54	PROJECTION TO BIT	