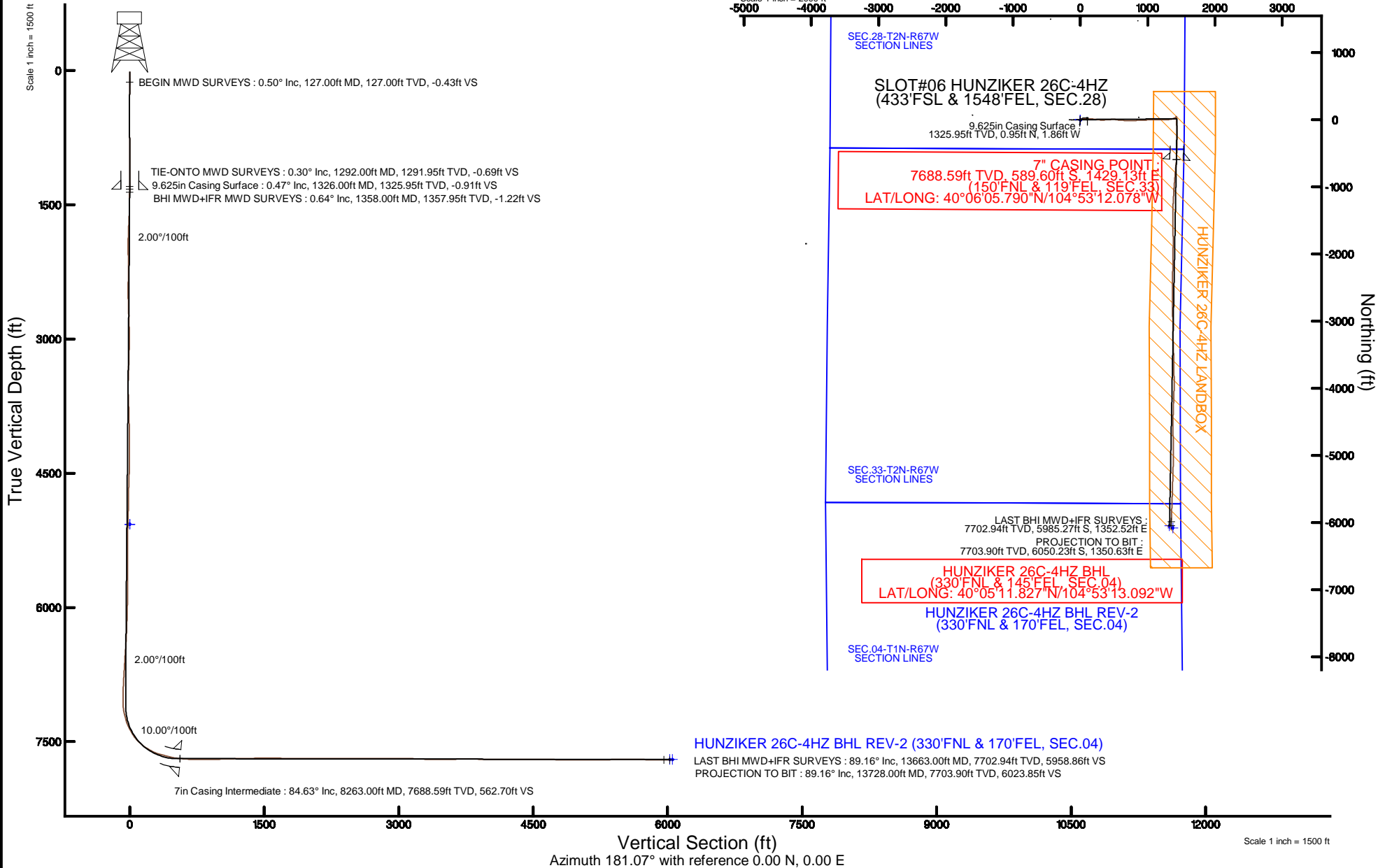


# KERR-MCGEE OIL & GAS ONSHORE LP (LAMBERT STATE PLANE COORD)

Location: COLORADO Slot: SLOT#06 HUNZIKER 26C-4HZ (433'FSL & 1548'FEL, SEC.28)  
 Field: WELD COUNTY (KERR MCGEE) Well: HUNZIKER 26C-4HZ  
 Facility: SEC.28-T2N-R67W Wellbore: HUNZIKER 26C-4HZ PWB

Plot reference wellpath is HUNZIKER 26C-4HZ (REV-A.0) PWB	
True vertical depths are referenced to PRECISION 460 (20'KB) (RKB)	Grid System: NAD83 / Lambert Colorado SP, Northern Zone (501), US feet
Measured depths are referenced to PRECISION 460 (20'KB) (RKB)	North Reference: True north
PRECISION 460 (20'KB) (RKB) to Mean Sea Level: 5069 feet	Scale: True distance
Mean Sea Level to Mud line (At Slot: SLOT#06 HUNZIKER 26C-4HZ (433'FSL & 1548'FEL, SEC.28)): 0 feet	Depths are in feet
Coordinates are in feet referenced to Slot	Created by: amarcar on 19/Mar/2015



REFERENCE WELLPATH IDENTIFICATION			
Operator	KERR-MCGEE OIL & GAS ONSHORE LP (LAMBERT STATE PLANE COORD)	Slot	SLOT#06 HUNZIKER 26C-4HZ (433'FSL & 1548'FEL, SEC.28)
Area	COLORADO	Well	HUNZIKER 26C-4HZ
Field	WELD COUNTY (KERR MCGEE)	Wellbore	HUNZIKER 26C-4HZ AWB <13728>
Facility	SEC.28-T2N-R67W		

REPORT SETUP INFORMATION			
Projection System	NAD83 / Lambert Colorado SP, Northern Zone (501), US feet	Software System	WellArchitect® 4.1.1
North Reference	True	User	Amarcar
Scale	0.99996	Report Generated	18/Mar/2015 at 16:04
Convergence at slot	0.39° East	Database/Source file	WellArchitectDB/HUNZIKER_26C-4HZ_AWB_13728_.xml

WELLPATH LOCATION						
	Local coordinates		Grid coordinates		Geographic coordinates	
	North[ft]	East[ft]	Easting[US ft]	Northing[US ft]	Latitude	Longitude
Slot Location	-4194.12	-899.91	3170131.02	1281033.37	40°06'11.617"N	104°53'30.469"W
Facility Reference Pt			3171001.96	1285233.41	40°06'53.064"N	104°53'18.888"W
Field Reference Pt			3197771.84	1268891.29	40°04'09.600"N	104°47'36.000"W

WELLPATH DATUM			
Calculation method	Minimum curvature	PRECISION 460 (20'KB) (RKB) to Facility Vertical Datum	5069.00ft
Horizontal Reference Pt	Slot	PRECISION 460 (20'KB) (RKB) to Mean Sea Level	5069.00ft
Vertical Reference Pt	PRECISION 460 (20'KB) (RKB)	PRECISION 460 (20'KB) (RKB) to Mud Line at Slot (SLOT#06 HUNZIKER 26C-4HZ (433'FSL & 1548'FEL, SEC.28))	5069.00ft
MD Reference Pt	PRECISION 460 (20'KB) (RKB)	Section Origin	N 0.00, E 0.00 ft
Field Vertical Reference	Mean Sea Level	Section Azimuth	181.07°

REFERENCE WELLPATH IDENTIFICATION			
Operator	KERR-MCGEE OIL & GAS ONSHORE LP (LAMBERT STATE PLANE COORD)	Slot	SLOT#06 HUNZIKER 26C-4HZ (433'FSL & 1548'FEL, SEC.28)
Area	COLORADO	Well	HUNZIKER 26C-4HZ
Field	WELD COUNTY (KERR MCGEE)	Wellbore	HUNZIKER 26C-4HZ AWB <13728>
Facility	SEC.28-T2N-R67W		

WELLPATH DATA (152 stations) † = interpolated/extrapolated station										
MD [ft]	Inclination [°]	Azimuth [°]	TVD [ft]	Vert Sect [ft]	North [ft]	East [ft]	Latitude	Longitude	DLS [°/100ft]	Comments
0.00†	0.000	337.400	0.00	0.00	0.00	0.00	40°06'11.617"N	104°53'30.469"W	0.00	
20.00	0.000	337.400	20.00	0.00	0.00	0.00	40°06'11.617"N	104°53'30.469"W	0.00	
127.00	0.500	337.400	127.00	-0.43	0.43	-0.18	40°06'11.621"N	104°53'30.471"W	0.47	BEGIN MWD SURVEYS
213.00	0.600	310.600	212.99	-1.06	1.07	-0.67	40°06'11.628"N	104°53'30.478"W	0.32	
302.00	0.400	42.600	301.99	-1.59	1.60	-0.81	40°06'11.633"N	104°53'30.479"W	0.82	
391.00	0.700	30.600	390.99	-2.29	2.30	-0.32	40°06'11.640"N	104°53'30.473"W	0.36	
480.00	0.500	301.600	479.98	-2.96	2.97	-0.38	40°06'11.646"N	104°53'30.474"W	0.96	
576.00	0.800	179.800	575.98	-2.51	2.52	-0.73	40°06'11.642"N	104°53'30.478"W	1.19	
671.00	0.100	246.700	670.98	-1.81	1.82	-0.80	40°06'11.635"N	104°53'30.479"W	0.81	
766.00	0.600	177.300	765.98	-1.28	1.29	-0.86	40°06'11.630"N	104°53'30.480"W	0.60	
861.00	1.000	155.800	860.97	-0.03	0.04	-0.49	40°06'11.617"N	104°53'30.475"W	0.52	
957.00	0.300	235.000	956.96	0.87	-0.87	-0.36	40°06'11.608"N	104°53'30.474"W	1.03	
1050.00	0.300	312.800	1049.96	0.85	-0.84	-0.73	40°06'11.609"N	104°53'30.478"W	0.41	
1143.00	0.600	311.200	1142.96	0.38	-0.36	-1.28	40°06'11.613"N	104°53'30.485"W	0.32	
1239.00	0.500	339.300	1238.95	-0.33	0.37	-1.81	40°06'11.621"N	104°53'30.492"W	0.30	
1292.00	0.300	8.100	1291.95	-0.69	0.72	-1.87	40°06'11.624"N	104°53'30.493"W	0.52	TIE-ONTO MWD SURVEYS
1358.00	0.640	350.960	1357.95	-1.22	1.26	-1.90	40°06'11.629"N	104°53'30.493"W	0.55	BHI MWD+IFR MWD SURVEYS
1448.00	2.600	83.890	1447.92	-1.97	1.97	0.05	40°06'11.636"N	104°53'30.468"W	3.01	
1538.00	3.020	61.360	1537.81	-3.40	3.32	4.16	40°06'11.650"N	104°53'30.415"W	1.30	
1628.00	6.200	65.090	1627.51	-6.71	6.51	10.65	40°06'11.681"N	104°53'30.332"W	3.55	
1718.00	7.640	68.610	1716.85	-11.12	10.74	20.63	40°06'11.723"N	104°53'30.204"W	1.67	
1808.00	8.150	79.280	1806.00	-14.71	14.11	32.47	40°06'11.756"N	104°53'30.051"W	1.72	
1897.00	9.080	79.080	1894.00	-17.46	16.61	45.56	40°06'11.781"N	104°53'29.883"W	1.05	
1987.00	9.430	97.760	1982.85	-18.08	16.96	59.85	40°06'11.785"N	104°53'29.699"W	3.35	
2077.00	9.250	99.140	2071.65	-16.21	14.82	74.29	40°06'11.763"N	104°53'29.513"W	0.32	
2167.00	10.710	96.460	2160.29	-14.41	12.73	89.74	40°06'11.743"N	104°53'29.314"W	1.70	
2256.00	11.710	90.680	2247.59	-13.69	11.69	106.99	40°06'11.732"N	104°53'29.092"W	1.69	
2346.00	12.730	80.550	2335.56	-15.57	13.21	125.91	40°06'11.748"N	104°53'28.849"W	2.63	
2436.00	14.560	86.210	2423.02	-18.34	15.58	146.98	40°06'11.771"N	104°53'28.577"W	2.51	
2526.00	14.650	98.630	2510.14	-17.80	14.62	169.53	40°06'11.762"N	104°53'28.287"W	3.47	
2616.00	16.430	94.400	2596.85	-15.56	11.94	193.47	40°06'11.735"N	104°53'27.979"W	2.34	
2705.00	17.050	98.630	2682.08	-13.12	9.02	218.92	40°06'11.706"N	104°53'27.652"W	1.54	
2795.00	18.110	97.860	2767.87	-9.73	5.12	245.83	40°06'11.668"N	104°53'27.305"W	1.21	
2885.00	18.090	97.700	2853.42	-6.46	1.34	273.53	40°06'11.630"N	104°53'26.949"W	0.06	
2975.00	19.490	92.920	2938.63	-4.37	-1.30	302.37	40°06'11.604"N	104°53'26.578"W	2.31	
3065.00	20.190	88.790	3023.29	-4.50	-1.74	332.90	40°06'11.600"N	104°53'26.185"W	1.74	
3154.00	18.410	87.000	3107.28	-6.11	-0.68	362.29	40°06'11.610"N	104°53'25.807"W	2.11	
3244.00	17.830	88.210	3192.82	-7.81	0.50	390.25	40°06'11.622"N	104°53'25.447"W	0.77	
3334.00	17.310	82.980	3278.63	-10.39	2.56	417.32	40°06'11.642"N	104°53'25.099"W	1.85	
3424.00	17.850	85.350	3364.42	-13.65	5.32	444.36	40°06'11.670"N	104°53'24.751"W	1.00	
3514.00	14.130	85.630	3450.93	-16.07	7.27	469.07	40°06'11.689"N	104°53'24.433"W	4.13	
3604.00	14.810	89.430	3538.07	-17.44	8.23	491.52	40°06'11.698"N	104°53'24.144"W	1.30	
3694.00	14.560	99.610	3625.15	-16.09	6.45	514.18	40°06'11.681"N	104°53'23.852"W	2.88	
3783.00	15.330	99.430	3711.14	-12.72	2.66	536.82	40°06'11.643"N	104°53'23.561"W	0.87	
3918.00	18.460	94.410	3840.30	-8.88	-1.91	575.74	40°06'11.598"N	104°53'23.060"W	2.56	

REFERENCE WELLPATH IDENTIFICATION			
Operator	KERR-MCGEE OIL & GAS ONSHORE LP (LAMBERT STATE PLANE COORD)	Slot	SLOT#06 HUNZIKER 26C-4HZ (433'FSL & 1548'FEL, SEC.28)
Area	COLORADO	Well	HUNZIKER 26C-4HZ
Field	WELD COUNTY (KERR MCGEE)	Wellbore	HUNZIKER 26C-4HZ AWB <13728>
Facility	SEC.28-T2N-R67W		

WELLPATH DATA (152 stations)										
MD [ft]	Inclination [°]	Azimuth [°]	TVD [ft]	Vert Sect [ft]	North [ft]	East [ft]	Latitude	Longitude	DLS ["/100ft]	Comments
4053.00	14.800	97.460	3969.63	-5.72	-5.80	614.17	40°06'11.560"N	104°53'22.565"W	2.79	
4143.00	16.140	90.240	4056.38	-4.62	-7.34	638.08	40°06'11.544"N	104°53'22.258"W	2.60	
4233.00	19.140	93.950	4142.14	-4.06	-8.41	665.31	40°06'11.534"N	104°53'21.907"W	3.56	
4323.00	20.590	92.000	4226.78	-3.07	-9.98	695.85	40°06'11.518"N	104°53'21.514"W	1.77	
4412.00	19.100	86.650	4310.50	-3.94	-9.67	726.03	40°06'11.521"N	104°53'21.126"W	2.64	
4502.00	23.080	91.250	4394.46	-5.02	-9.20	758.38	40°06'11.526"N	104°53'20.709"W	4.79	
4592.00	23.200	89.240	4477.22	-5.53	-9.35	793.74	40°06'11.525"N	104°53'20.254"W	0.89	
4682.00	20.670	84.980	4560.71	-7.79	-7.72	827.30	40°06'11.541"N	104°53'19.822"W	3.32	
4771.00	20.820	85.510	4643.94	-10.99	-5.11	858.72	40°06'11.566"N	104°53'19.418"W	0.27	
4861.00	21.120	89.250	4727.98	-13.05	-3.64	890.88	40°06'11.581"N	104°53'19.004"W	1.52	
4951.00	20.330	88.570	4812.16	-14.25	-3.04	922.72	40°06'11.587"N	104°53'18.594"W	0.92	
5041.00	19.350	88.120	4896.81	-15.70	-2.16	953.25	40°06'11.595"N	104°53'18.202"W	1.10	
5131.00	18.070	86.850	4982.06	-17.50	-0.91	982.09	40°06'11.608"N	104°53'17.830"W	1.49	
5221.00	16.770	85.070	5067.93	-19.89	0.98	1008.97	40°06'11.626"N	104°53'17.485"W	1.56	
5311.00	16.680	86.390	5154.12	-22.30	2.91	1034.79	40°06'11.645"N	104°53'17.152"W	0.43	
5401.00	17.670	90.650	5240.11	-23.46	3.56	1061.34	40°06'11.652"N	104°53'16.811"W	1.78	
5490.00	16.520	89.700	5325.17	-23.86	3.48	1087.50	40°06'11.651"N	104°53'16.474"W	1.33	
5580.00	16.410	93.780	5411.49	-23.57	2.71	1112.99	40°06'11.643"N	104°53'16.146"W	1.29	
5670.00	16.640	91.170	5497.77	-22.94	1.60	1138.55	40°06'11.633"N	104°53'15.817"W	0.86	
5760.00	18.070	92.350	5583.67	-22.61	0.77	1165.39	40°06'11.624"N	104°53'15.472"W	1.64	
5850.00	18.360	90.650	5669.16	-22.41	0.04	1193.51	40°06'11.617"N	104°53'15.110"W	0.67	
5940.00	16.120	89.280	5755.11	-22.90	0.03	1220.18	40°06'11.617"N	104°53'14.767"W	2.53	
6029.00	15.600	87.110	5840.73	-24.12	0.79	1244.48	40°06'11.625"N	104°53'14.454"W	0.89	
6119.00	14.090	87.560	5927.72	-25.62	1.87	1267.52	40°06'11.635"N	104°53'14.157"W	1.68	
6209.00	14.300	85.430	6014.97	-27.39	3.22	1289.54	40°06'11.648"N	104°53'13.874"W	0.63	
6299.00	14.690	84.880	6102.11	-29.71	5.12	1311.99	40°06'11.667"N	104°53'13.585"W	0.46	
6388.00	12.370	80.260	6188.63	-32.72	7.74	1332.62	40°06'11.693"N	104°53'13.319"W	2.87	
6478.00	10.210	80.910	6276.89	-35.94	10.63	1350.00	40°06'11.722"N	104°53'13.096"W	2.40	
6568.00	12.200	75.930	6365.17	-39.83	14.21	1367.11	40°06'11.757"N	104°53'12.876"W	2.46	
6658.00	10.990	70.450	6453.33	-45.34	19.39	1384.42	40°06'11.808"N	104°53'12.653"W	1.82	
6748.00	8.770	64.890	6542.00	-51.39	25.17	1398.72	40°06'11.865"N	104°53'12.469"W	2.68	
6837.00	6.720	58.720	6630.18	-57.17	30.76	1409.31	40°06'11.921"N	104°53'12.333"W	2.48	
6927.00	5.080	48.820	6719.70	-62.66	36.11	1416.81	40°06'11.973"N	104°53'12.236"W	2.14	
7017.00	4.060	39.620	6809.42	-67.84	41.19	1421.84	40°06'12.024"N	104°53'12.171"W	1.39	
7107.00	3.320	32.340	6899.23	-72.56	45.85	1425.27	40°06'12.070"N	104°53'12.127"W	0.97	
7197.00	0.950	3.360	6989.16	-75.53	48.80	1426.71	40°06'12.099"N	104°53'12.109"W	2.81	
7287.00	2.840	155.520	7079.13	-74.26	47.51	1427.67	40°06'12.086"N	104°53'12.096"W	4.12	
7377.00	10.850	171.030	7168.42	-63.89	37.10	1429.92	40°06'11.983"N	104°53'12.067"W	9.05	
7466.00	17.320	176.530	7254.71	-42.41	15.58	1432.03	40°06'11.771"N	104°53'12.040"W	7.42	
7556.00	24.060	181.270	7338.86	-10.67	-16.18	1432.44	40°06'11.457"N	104°53'12.035"W	7.71	
7646.00	33.350	179.180	7417.71	32.49	-59.35	1432.38	40°06'11.030"N	104°53'12.036"W	10.38	
7736.00	42.220	178.750	7488.77	87.54	-114.43	1433.40	40°06'10.486"N	104°53'12.023"W	9.86	
7825.00	52.660	179.390	7548.88	152.97	-179.88	1434.43	40°06'09.839"N	104°53'12.009"W	11.74	
7915.00	62.650	180.780	7596.98	228.89	-255.82	1434.27	40°06'09.089"N	104°53'12.012"W	11.18	
8005.00	71.540	179.770	7631.97	311.70	-338.64	1433.89	40°06'08.270"N	104°53'12.016"W	9.93	

REFERENCE WELLPATH IDENTIFICATION			
Operator	KERR-MCGEE OIL & GAS ONSHORE LP (LAMBERT STATE PLANE COORD)	Slot	SLOT#06 HUNZIKER 26C-4HZ (433'FSL & 1548'FEL, SEC.28)
Area	COLORADO	Well	HUNZIKER 26C-4HZ
Field	WELD COUNTY (KERR MCGEE)	Wellbore	HUNZIKER 26C-4HZ AWB <13728>
Facility	SEC.28-T2N-R67W		

WELLPATH DATA (152 stations) † = interpolated/extrapolated station										
MD [ft]	Inclination [°]	Azimuth [°]	TVD [ft]	Vert Sect [ft]	North [ft]	East [ft]	Latitude	Longitude	DLS ["/100ft]	Comments
8095.00	74.730	180.500	7658.08	397.81	-424.76	1433.69	40°06'07.419"N	104°53'12.019"W	3.63	
8185.00	78.790	181.210	7678.69	485.40	-512.34	1432.38	40°06'06.554"N	104°53'12.036"W	4.58	
8218.00	83.240	182.280	7683.84	517.98	-544.91	1431.38	40°06'06.232"N	104°53'12.049"W	13.86	
8263.00†	84.629	183.495	7688.59	562.70	-589.60	1429.13	40°06'05.790"N	104°53'12.078"W	4.09	7" CASING POINT
8297.00	85.680	184.410	7691.47	596.54	-623.39	1426.79	40°06'05.456"N	104°53'12.108"W	4.09	
8387.00	88.120	185.460	7696.33	686.20	-712.92	1419.06	40°06'04.571"N	104°53'12.208"W	2.95	
8476.00	90.270	185.730	7697.58	774.91	-801.48	1410.38	40°06'03.696"N	104°53'12.319"W	2.43	
8566.00	90.610	184.400	7696.89	864.68	-891.13	1402.44	40°06'02.810"N	104°53'12.422"W	1.53	
8656.00	90.640	184.100	7695.91	954.54	-980.87	1395.77	40°06'01.923"N	104°53'12.508"W	0.33	
8746.00	91.600	183.720	7694.15	1044.41	-1070.64	1389.63	40°06'01.036"N	104°53'12.587"W	1.15	
8836.00	91.810	183.560	7691.47	1134.28	-1160.42	1383.92	40°06'00.149"N	104°53'12.660"W	0.29	
8926.00	91.290	182.300	7689.04	1224.20	-1250.27	1379.32	40°05'59.261"N	104°53'12.719"W	1.51	
9016.00	91.410	181.090	7686.92	1314.17	-1340.20	1376.66	40°05'58.373"N	104°53'12.754"W	1.35	
9105.00	90.950	179.940	7685.09	1403.14	-1429.18	1375.86	40°05'57.493"N	104°53'12.764"W	1.39	
9195.00	91.660	179.570	7683.04	1493.09	-1519.16	1376.25	40°05'56.604"N	104°53'12.759"W	0.89	
9285.00	89.130	179.350	7682.42	1583.05	-1609.14	1377.10	40°05'55.715"N	104°53'12.748"W	2.82	
9375.00	88.050	178.430	7684.63	1672.95	-1699.10	1378.84	40°05'54.826"N	104°53'12.726"W	1.58	
9465.00	88.670	180.000	7687.21	1762.87	-1789.05	1380.07	40°05'53.937"N	104°53'12.710"W	1.87	
9555.00	89.260	180.560	7688.83	1852.84	-1879.03	1379.63	40°05'53.048"N	104°53'12.716"W	0.90	
9644.00	89.750	180.960	7689.60	1941.84	-1968.02	1378.45	40°05'52.168"N	104°53'12.731"W	0.71	
9824.00	90.760	181.490	7688.80	2121.83	-2147.97	1374.60	40°05'50.390"N	104°53'12.781"W	0.63	
9914.00	89.660	180.570	7688.47	2211.83	-2237.96	1372.98	40°05'49.501"N	104°53'12.802"W	1.59	
10004.00	90.270	179.950	7688.53	2301.82	-2327.95	1372.58	40°05'48.611"N	104°53'12.807"W	0.97	
10183.00	89.320	180.050	7689.17	2480.78	-2506.95	1372.58	40°05'46.843"N	104°53'12.807"W	0.53	
10363.00	91.600	180.610	7687.72	2660.75	-2686.93	1371.54	40°05'45.064"N	104°53'12.821"W	1.30	
10453.00	89.630	180.050	7686.75	2750.73	-2776.92	1371.02	40°05'44.175"N	104°53'12.827"W	2.28	
10543.00	88.270	179.000	7688.40	2840.68	-2866.90	1371.77	40°05'43.286"N	104°53'12.818"W	1.91	
10633.00	89.960	179.170	7689.79	2930.61	-2956.87	1373.20	40°05'42.396"N	104°53'12.799"W	1.89	
10723.00	90.490	179.820	7689.44	3020.58	-3046.87	1374.00	40°05'41.507"N	104°53'12.789"W	0.93	
10812.00	89.660	179.700	7689.32	3109.55	-3135.86	1374.37	40°05'40.628"N	104°53'12.784"W	0.94	
10902.00	87.160	177.690	7691.82	3199.43	-3225.79	1376.42	40°05'39.739"N	104°53'12.758"W	3.56	
11082.00	89.320	177.620	7697.35	3379.01	-3405.55	1383.78	40°05'37.962"N	104°53'12.664"W	1.20	
11172.00	89.780	178.400	7698.06	3468.88	-3495.49	1386.90	40°05'37.074"N	104°53'12.623"W	1.01	
11262.00	91.200	179.360	7697.29	3558.81	-3585.47	1388.66	40°05'36.184"N	104°53'12.601"W	1.90	
11351.00	91.630	179.070	7695.09	3647.73	-3674.43	1389.88	40°05'35.305"N	104°53'12.585"W	0.58	
11441.00	90.270	178.520	7693.60	3737.65	-3764.40	1391.77	40°05'34.416"N	104°53'12.561"W	1.63	
11531.00	89.230	178.960	7693.99	3827.57	-3854.37	1393.75	40°05'33.527"N	104°53'12.536"W	1.25	
11621.00	87.870	179.870	7696.27	3917.50	-3944.33	1394.67	40°05'32.638"N	104°53'12.524"W	1.82	
11710.00	89.560	182.130	7698.26	4006.47	-4033.29	1393.12	40°05'31.759"N	104°53'12.544"W	3.17	
11800.00	89.350	182.090	7699.12	4096.45	-4123.22	1389.81	40°05'30.870"N	104°53'12.587"W	0.24	
11890.00	90.270	182.280	7699.42	4186.43	-4213.16	1386.37	40°05'29.982"N	104°53'12.631"W	1.04	
11980.00	90.800	182.350	7698.58	4276.41	-4303.08	1382.74	40°05'29.093"N	104°53'12.678"W	0.59	
12070.00	91.380	181.610	7696.86	4366.38	-4393.01	1379.63	40°05'28.204"N	104°53'12.718"W	1.04	
12159.00	90.240	180.290	7695.61	4455.37	-4481.98	1378.16	40°05'27.325"N	104°53'12.737"W	1.96	
12249.00	89.440	180.000	7695.86	4545.35	-4571.98	1377.93	40°05'26.436"N	104°53'12.740"W	0.95	

REFERENCE WELLPATH IDENTIFICATION			
Operator	KERR-MCGEE OIL & GAS ONSHORE LP (LAMBERT STATE PLANE COORD)	Slot	SLOT#06 HUNZIKER 26C-4HZ (433'FSL & 1548'FEL, SEC.28)
Area	COLORADO	Well	HUNZIKER 26C-4HZ
Field	WELD COUNTY (KERR MCGEE)	Wellbore	HUNZIKER 26C-4HZ AWB <13728>
Facility	SEC.28-T2N-R67W		

WELLPATH DATA (152 stations)										
MD [ft]	Inclination [°]	Azimuth [°]	TVD [ft]	Vert Sect [ft]	North [ft]	East [ft]	Latitude	Longitude	DLS ["/100ft]	Comments
12339.00	88.580	179.080	7697.41	4635.30	-4661.97	1378.65	40°05'25.546"N	104°53'12.730"W	1.40	
12429.00	88.450	178.430	7699.75	4725.20	-4751.91	1380.60	40°05'24.657"N	104°53'12.705"W	0.74	
12519.00	89.470	178.490	7701.38	4815.09	-4841.86	1383.02	40°05'23.769"N	104°53'12.674"W	1.14	
12608.00	90.060	179.820	7701.74	4904.04	-4930.85	1384.34	40°05'22.889"N	104°53'12.657"W	1.63	
12698.00	90.520	180.740	7701.29	4994.03	-5020.85	1383.90	40°05'22.000"N	104°53'12.663"W	1.14	
12788.00	90.000	182.130	7700.88	5084.02	-5110.82	1381.64	40°05'21.111"N	104°53'12.692"W	1.65	
12878.00	89.290	181.470	7701.44	5174.01	-5200.77	1378.81	40°05'20.222"N	104°53'12.729"W	1.08	
12968.00	90.270	181.650	7701.78	5264.01	-5290.73	1376.36	40°05'19.333"N	104°53'12.760"W	1.11	
13058.00	91.290	181.990	7700.56	5353.99	-5380.68	1373.51	40°05'18.444"N	104°53'12.797"W	1.19	
13147.00	90.270	181.530	7699.35	5442.97	-5469.63	1370.77	40°05'17.565"N	104°53'12.832"W	1.26	
13237.00	90.430	181.780	7698.80	5532.97	-5559.59	1368.17	40°05'16.676"N	104°53'12.866"W	0.33	
13327.00	89.900	182.090	7698.54	5622.96	-5649.54	1365.14	40°05'15.787"N	104°53'12.905"W	0.68	
13417.00	88.730	182.400	7699.61	5712.93	-5739.46	1361.61	40°05'14.898"N	104°53'12.950"W	1.34	
13507.00	89.440	182.270	7701.05	5802.90	-5829.37	1357.94	40°05'14.010"N	104°53'12.998"W	0.80	
13596.00	89.290	181.980	7702.04	5891.87	-5918.31	1354.64	40°05'13.131"N	104°53'13.040"W	0.37	
13663.00	89.160	181.660	7702.94	5958.86	-5985.27	1352.52	40°05'12.469"N	104°53'13.068"W	0.52	LAST BHI MWD-HFR SURVEYS
13728.00	89.160	181.660	7703.90	6023.85	-6050.23	1350.63	40°05'11.827"N	104°53'13.092"W	0.00	PROJECTION TO BIT

HOLE & CASING SECTIONS - Ref Wellbore: HUNZIKER 26C-4HZ AWB <13728> Ref Wellpath: HUNZIKER 26C-4HZ AWP										
String/Diameter	Start MD [ft]	End MD [ft]	Interval [ft]	Start TVD [ft]	End TVD [ft]	Start N/S [ft]	Start E/W [ft]	End N/S [ft]	End E/W [ft]	
13.5in Open Hole	20.00	1342.00	1322.00	20.00	1341.95	0.00	0.00	1.09	-1.88	
9.625in Casing Surface	20.00	1326.00	1306.00	20.00	1325.95	0.00	0.00	0.95	-1.86	
8.75in Open Hole	1342.00	8273.00	6931.00	1341.95	7689.50	1.09	-1.88	-599.53	1428.50	
7in Casing Intermediate	20.00	8263.00	8243.00	20.00	7688.59	0.00	0.00	-589.60	1429.13	
6.125in Open Hole	8273.00	13728.00	5455.00	7689.50	7703.90	-599.53	1428.50	-6050.23	1350.63	

REFERENCE WELLPATH IDENTIFICATION			
Operator	KERR-MCGEE OIL & GAS ONSHORE LP (LAMBERT STATE PLANE COORD)	Slot	SLOT#06 HUNZIKER 26C-4HZ (433'FSL & 1548'FEL, SEC.28)
Area	COLORADO	Well	HUNZIKER 26C-4HZ
Field	WELD COUNTY (KERR MCGEE)	Wellbore	HUNZIKER 26C-4HZ AWB <13728>
Facility	SEC.28-T2N-R67W		

TARGETS								
Name	TVD [ft]	North [ft]	East [ft]	Grid East [US ft]	Grid North [US ft]	Latitude	Longitude	Shape
SEC.04-T1N-R67W SECTION LINES	5069.00	0.02	-0.02	3170131.01	1281033.39	40°06'11.617"N	104°53'30.469"W	polygon
SEC.28-T2N-R67W SECTION LINES	5069.00	0.02	-0.02	3170131.01	1281033.39	40°06'11.617"N	104°53'30.469"W	polygon
SEC.33-T2N-R67W SECTION LINES	5069.00	0.02	-0.02	3170131.01	1281033.39	40°06'11.617"N	104°53'30.469"W	polygon
HUNZIKER 26C-4HZ BHL ON PLAT REV-1 (360'FNL & 120'FEL, SEC.04)	7699.00	-6080.72	1374.95	3171547.59	1274962.47	<b>40°05'11.526"N</b>	<b>104°53'12.779"W</b>	point
HUNZIKER 26C-4HZ BHL REV-2 (330'FNL & 170'FEL, SEC.04)	7699.00	-6050.72	1324.97	3171497.41	1274992.13	40°05'11.822"N	104°53'13.422"W	point
HUNZIKER 26C-4HZ LANDBOX	7699.00	0.00	0.00	3170131.02	1281033.37	40°06'11.617"N	104°53'30.469"W	polygon

WELLPATH COMPOSITION - Ref Wellbore: HUNZIKER 26C-4HZ AWB <13728>    Ref Wellpath: HUNZIKER 26C-4HZ AWP			
Start MD [ft]	End MD [ft]	Positional Uncertainty Model	Log Name/Comment
20.00	1292.00	ISCWSA MWD, Rev. 2 (Standard)	CATHEDRAL MWD SURVEYS 13.5" <127-1292>
1292.00	8218.00	ISCWSA MWD, Rev. 2, axial magnetic correction (Standard) (MagVAR IFR Wattenberg)	BHI MWD+IFR SURVEYS 8.75" <1358-8218>
8218.00	13663.00	ISCWSA MWD, Rev. 2, axial magnetic correction (Standard) (MagVAR IFR Wattenberg)	BHI MWD+IFR SURVEYS 6.125" <8297-13663>
13663.00	13728.00	Blind Drilling (std)	Projection to bit

REFERENCE WELLPATH IDENTIFICATION			
Operator	KERR-MCGEE OIL & GAS ONSHORE LP (LAMBERT STATE PLANE COORD)	Slot	SLOT#06 HUNZIKER 26C-4HZ (433'FSL & 1548'FEL, SEC.28)
Area	COLORADO	Well	HUNZIKER 26C-4HZ
Field	WELD COUNTY (KERR MCGEE)	Wellbore	HUNZIKER 26C-4HZ AWB <13728>
Facility	SEC.28-T2N-R67W		

WELLPATH COMMENTS					
MD [ft]	Inclination [°]	Azimuth [°]	TVD [ft]	Comment	
127.00	0.500	337.400	127.00	BEGIN MWD SURVEYS	
1292.00	0.300	8.100	1291.95	TIE-ONTO MWD SURVEYS	
1358.00	0.640	350.960	1357.95	BHI MWD+IFR MWD SURVEYS	
8263.00	84.629	183.495	7688.59	7" CASING POINT	
13663.00	89.160	181.660	7702.94	LAST BHI MWD+IFR SURVEYS	
13728.00	89.160	181.660	7703.90	PROJECTION TO BIT	