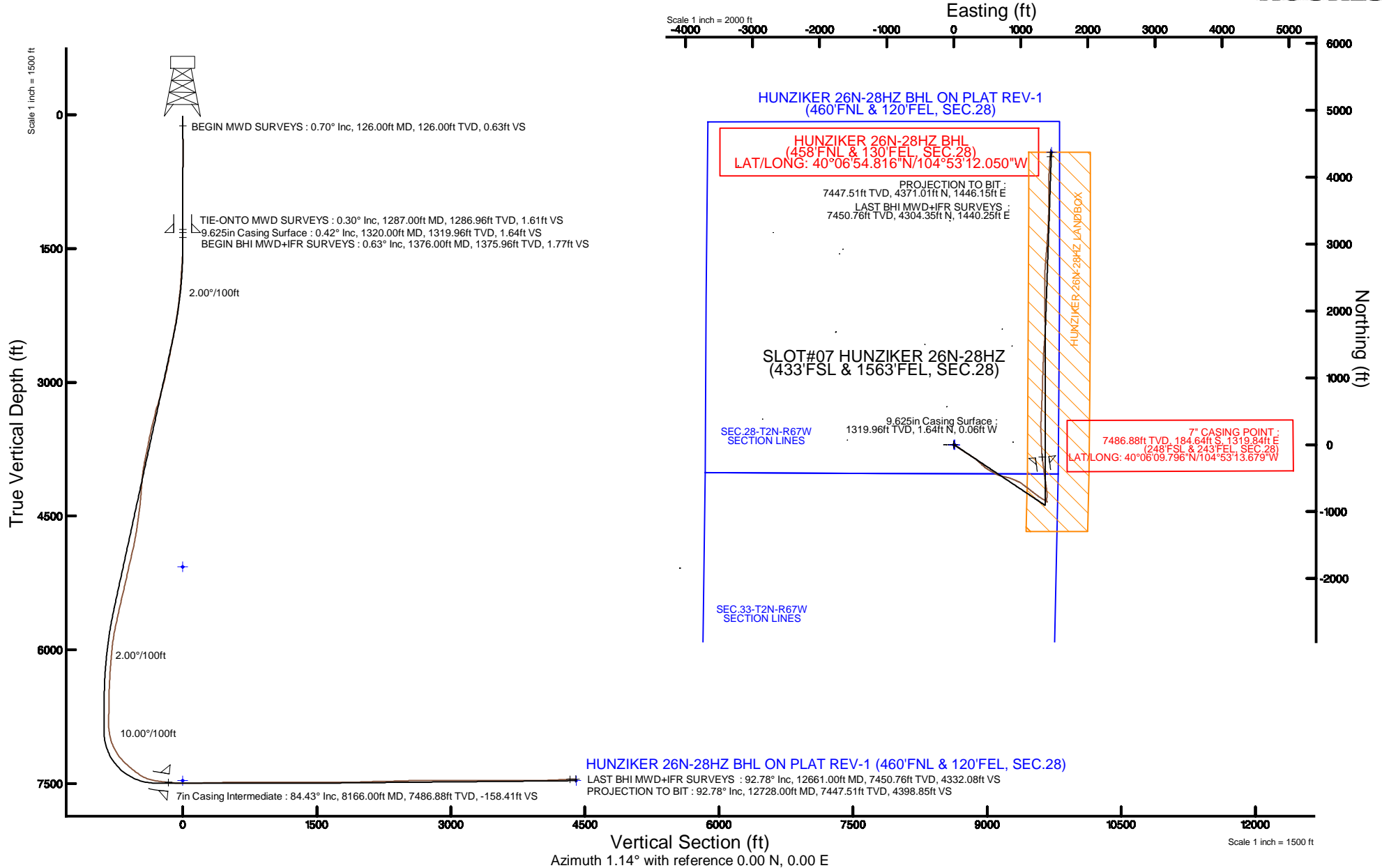


KERR-MCGEE OIL & GAS ONSHORE LP (LAMBERT STATE PLANE COORD)

Location: COLORADO Slot: SLOT#07 HUNZIKER 26N-28HZ (433'FSL & 1563'FEL, SEC.28)
 Field: WELD COUNTY (KERR MCGEE) Well: HUNZIKER 26N-28HZ
 Facility: SEC.28-T2N-R67W Wellbore: HUNZIKER 26N-28HZ PWB

Plot reference wellpath is HUNZIKER 26N-28HZ (REV-A.0) PWP

True vertical depths are referenced to PRECISION 460 (20'KB) (RKB)	Grid System: NAD83 / Lambert Colorado SP, Northern Zone (501), US feet
Measured depths are referenced to PRECISION 460 (20'KB) (RKB)	North Reference: True north
PRECISION 460 (20'KB) (RKB) to Mean Sea Level: 5069 feet	Scale: True distance
Mean Sea Level to Mud line (At Slot: SLOT#07 HUNZIKER 26N-28HZ (433'FSL & 1563'FEL, SEC.28)): 0 feet	Depths are in feet
Coordinates are in feet referenced to Slot	Created by: amarcar on 18/Mar/2015



REFERENCE WELLPATH IDENTIFICATION			
Operator	KERR-MCGEE OIL & GAS ONSHORE LP (LAMBERT STATE PLANE COORD)	Slot	SLOT#07 HUNZIKER 26N-28HZ (433'FSL & 1563'FEL, SEC.28)
Area	COLORADO	Well	HUNZIKER 26N-28HZ
Field	WELD COUNTY (KERR MCGEE)	Wellbore	HUNZIKER 26N-28HZ AWB <12728>
Facility	SEC.28-T2N-R67W		

REPORT SETUP INFORMATION			
Projection System	NAD83 / Lambert Colorado SP, Northern Zone (501), US feet	Software System	WellArchitect® 4.1.1
North Reference	True	User	Amarcar
Scale	0.99996	Report Generated	18/Mar/2015 at 14:46
Convergence at slot	0.39° East	Database/Source file	WellArchitectDB/HUNZIKER_26N-28HZ_AWB_12728_.xml

WELLPATH LOCATION						
	Local coordinates		Grid coordinates		Geographic coordinates	
	North[ft]	East[ft]	Easting[US ft]	Northing[US ft]	Latitude	Longitude
Slot Location	-4193.71	-915.07	3170115.87	1281033.67	40°06'11.621"N	104°53'30.664"W
Facility Reference Pt			3171001.96	1285233.41	40°06'53.064"N	104°53'18.888"W
Field Reference Pt			3197771.84	1268891.29	40°04'09.600"N	104°47'36.000"W

WELLPATH DATUM			
Calculation method	Minimum curvature	PRECISION 460 (20'KB) (RKB) to Facility Vertical Datum	5069.00ft
Horizontal Reference Pt	Slot	PRECISION 460 (20'KB) (RKB) to Mean Sea Level	5069.00ft
Vertical Reference Pt	PRECISION 460 (20'KB) (RKB)	PRECISION 460 (20'KB) (RKB) to Mud Line at Slot (SLOT#07 HUNZIKER 26N-28HZ (433'FSL & 1563'FEL, SEC.28))	5069.00ft
MD Reference Pt	PRECISION 460 (20'KB) (RKB)	Section Origin	N 0.00, E 0.00 ft
Field Vertical Reference	Mean Sea Level	Section Azimuth	1.14°

REFERENCE WELLPATH IDENTIFICATION			
Operator	KERR-MCGEE OIL & GAS ONSHORE LP (LAMBERT STATE PLANE COORD)	Slot	SLOT#07 HUNZIKER 26N-28HZ (433'FSL & 1563'FEL, SEC.28)
Area	COLORADO	Well	HUNZIKER 26N-28HZ
Field	WELD COUNTY (KERR MCGEE)	Wellbore	HUNZIKER 26N-28HZ AWP <12728>
Facility	SEC.28-T2N-R67W		

WELLPATH DATA (117 stations) † = interpolated/extrapolated station										
MD [ft]	Inclination [°]	Azimuth [°]	TVD [ft]	Vert Sect [ft]	North [ft]	East [ft]	Latitude	Longitude	DLS [°/100ft]	Comments
0.00†	0.000	12.800	0.00	0.00	0.00	0.00	40°06'11.621"N	104°53'30.664"W	0.00	
20.00	0.000	12.800	20.00	0.00	0.00	0.00	40°06'11.621"N	104°53'30.664"W	0.00	
126.00	0.700	12.800	126.00	0.63	0.63	0.14	40°06'11.627"N	104°53'30.662"W	0.66	BEGIN MWD SURVEYS
215.00	0.600	6.100	214.99	1.63	1.62	0.31	40°06'11.637"N	104°53'30.660"W	0.14	
301.00	0.400	323.900	300.99	2.32	2.32	0.18	40°06'11.644"N	104°53'30.662"W	0.47	
390.00	0.700	309.400	389.98	2.90	2.91	-0.42	40°06'11.650"N	104°53'30.669"W	0.37	
479.00	0.600	240.100	478.98	3.00	3.02	-1.24	40°06'11.651"N	104°53'30.680"W	0.84	
573.00	0.800	232.000	572.97	2.33	2.37	-2.19	40°06'11.644"N	104°53'30.692"W	0.24	
666.00	0.300	216.700	665.97	1.72	1.78	-2.84	40°06'11.639"N	104°53'30.701"W	0.56	
762.00	0.500	74.700	761.97	1.64	1.69	-2.59	40°06'11.638"N	104°53'30.697"W	0.79	
858.00	0.400	62.000	857.96	1.92	1.96	-1.89	40°06'11.640"N	104°53'30.688"W	0.15	
954.00	0.100	126.900	953.96	2.03	2.06	-1.53	40°06'11.641"N	104°53'30.684"W	0.38	
1050.00	0.200	132.400	1049.96	1.87	1.90	-1.34	40°06'11.640"N	104°53'30.681"W	0.11	
1146.00	0.300	92.100	1145.96	1.76	1.78	-0.96	40°06'11.639"N	104°53'30.676"W	0.20	
1239.00	0.300	116.800	1238.96	1.65	1.66	-0.50	40°06'11.637"N	104°53'30.670"W	0.14	
1287.00	0.300	85.900	1286.96	1.61	1.61	-0.26	40°06'11.637"N	104°53'30.667"W	0.33	TIE-ONTO MWD SURVEYS
1376.00	0.630	74.450	1375.96	1.77	1.76	0.44	40°06'11.638"N	104°53'30.658"W	0.38	BEGIN BHI MWD+IFR SURVEYS
1470.00	2.230	123.480	1469.93	0.94	0.89	2.46	40°06'11.630"N	104°53'30.632"W	2.00	
1560.00	3.960	123.270	1559.79	-1.65	-1.78	6.52	40°06'11.603"N	104°53'30.580"W	1.92	
1650.00	5.680	124.380	1649.47	-5.75	-6.00	12.80	40°06'11.562"N	104°53'30.499"W	1.91	
1740.00	7.270	125.880	1738.89	-11.43	-11.85	21.09	40°06'11.504"N	104°53'30.393"W	1.78	
1830.00	8.100	119.210	1828.09	-17.66	-18.29	31.24	40°06'11.440"N	104°53'30.262"W	1.35	
1919.00	8.990	121.260	1916.10	-24.10	-24.96	42.65	40°06'11.374"N	104°53'30.115"W	1.06	
2009.00	11.270	125.960	2004.69	-32.66	-33.77	55.78	40°06'11.287"N	104°53'29.946"W	2.69	
2099.00	12.210	121.600	2092.81	-42.50	-43.92	71.01	40°06'11.187"N	104°53'29.750"W	1.44	
2189.00	14.500	125.260	2180.37	-53.65	-55.41	88.32	40°06'11.073"N	104°53'29.527"W	2.71	
2279.00	15.490	130.120	2267.31	-67.53	-69.66	106.71	40°06'10.933"N	104°53'29.291"W	1.78	
2369.00	16.840	123.040	2353.76	-81.99	-84.52	126.83	40°06'10.786"N	104°53'29.032"W	2.65	
2458.00	19.130	123.280	2438.40	-96.56	-99.55	149.83	40°06'10.637"N	104°53'28.736"W	2.57	
2638.00	20.080	121.390	2607.97	-127.82	-131.83	200.87	40°06'10.318"N	104°53'28.079"W	0.63	
2817.00	20.620	124.100	2775.80	-160.45	-165.51	253.20	40°06'09.985"N	104°53'27.406"W	0.61	
2997.00	23.770	123.170	2942.44	-196.95	-203.13	309.83	40°06'09.614"N	104°53'26.677"W	1.76	
3177.00	22.590	134.440	3107.99	-239.92	-247.21	364.90	40°06'09.178"N	104°53'25.968"W	2.55	
3356.00	23.060	131.960	3272.98	-286.42	-294.72	415.52	40°06'08.708"N	104°53'25.317"W	0.60	
3446.00	21.680	131.970	3356.20	-308.82	-317.63	440.99	40°06'08.482"N	104°53'24.989"W	1.53	
3536.00	23.830	125.770	3439.20	-330.02	-339.38	468.11	40°06'08.267"N	104°53'24.640"W	3.58	
3626.00	22.390	125.610	3521.98	-350.06	-359.99	496.80	40°06'08.064"N	104°53'24.271"W	1.60	
3805.00	22.930	116.560	3687.21	-384.34	-395.44	555.72	40°06'07.713"N	104°53'23.513"W	1.97	
3985.00	23.440	121.970	3852.69	-417.74	-430.08	617.46	40°06'07.371"N	104°53'22.718"W	1.22	
4165.00	21.650	108.290	4019.05	-445.91	-459.48	679.41	40°06'07.080"N	104°53'21.921"W	3.07	
4345.00	22.580	100.570	4185.84	-461.37	-476.24	744.92	40°06'06.915"N	104°53'21.078"W	1.69	
4524.00	21.510	106.080	4351.77	-475.46	-491.64	810.25	40°06'06.762"N	104°53'20.237"W	1.30	
4704.00	21.830	111.240	4519.06	-495.48	-512.90	873.16	40°06'06.552"N	104°53'19.428"W	1.07	
4794.00	22.610	111.260	4602.38	-507.18	-525.24	904.88	40°06'06.430"N	104°53'19.019"W	0.87	
4884.00	22.550	117.300	4685.49	-520.74	-539.43	936.34	40°06'06.290"N	104°53'18.614"W	2.58	

REFERENCE WELLPATH IDENTIFICATION			
Operator	KERR-MCGEE OIL & GAS ONSHORE LP (LAMBERT STATE PLANE COORD)	Slot	SLOT#07 HUNZIKER 26N-28HZ (433'FSL & 1563'FEL, SEC.28)
Area	COLORADO	Well	HUNZIKER 26N-28HZ
Field	WELD COUNTY (KERR MCGEE)	Wellbore	HUNZIKER 26N-28HZ AWB <12728>
Facility	SEC.28-T2N-R67W		

WELLPATH DATA (117 stations) † = interpolated/extrapolated station										
MD [ft]	Inclination [°]	Azimuth [°]	TVD [ft]	Vert Sect [ft]	North [ft]	East [ft]	Latitude	Longitude	DLS ["/100ft]	Comments
4973.00	22.600	114.200	4767.67	-534.97	-554.27	967.10	40°06'06.143"N	104°53'18.219"W	1.34	
5063.00	23.810	122.790	4850.41	-551.28	-571.20	998.16	40°06'05.976"N	104°53'17.819"W	3.99	
5153.00	21.990	127.530	4933.32	-570.82	-591.31	1026.80	40°06'05.777"N	104°53'17.450"W	2.88	
5243.00	20.400	128.080	5017.23	-590.24	-611.25	1052.51	40°06'05.580"N	104°53'17.120"W	1.78	
5333.00	21.410	124.400	5101.31	-608.68	-630.20	1078.41	40°06'05.393"N	104°53'16.786"W	1.84	
5422.00	20.390	127.750	5184.46	-626.84	-648.87	1104.08	40°06'05.209"N	104°53'16.456"W	1.76	
5513.00	21.540	128.900	5269.43	-646.52	-669.07	1129.61	40°06'05.009"N	104°53'16.127"W	1.34	
5602.00	20.850	126.640	5352.41	-665.73	-688.78	1155.04	40°06'04.814"N	104°53'15.800"W	1.20	
5692.00	21.820	128.200	5436.24	-685.11	-708.68	1181.03	40°06'04.617"N	104°53'15.466"W	1.25	
5782.00	20.230	127.800	5520.25	-704.48	-728.57	1206.47	40°06'04.421"N	104°53'15.138"W	1.77	
5872.00	20.190	126.120	5604.71	-722.68	-747.26	1231.32	40°06'04.236"N	104°53'14.819"W	0.65	
5962.00	21.170	127.040	5688.91	-741.11	-766.20	1256.83	40°06'04.049"N	104°53'14.490"W	1.15	
6052.00	18.910	125.270	5773.46	-758.83	-784.42	1281.72	40°06'03.869"N	104°53'14.170"W	2.60	
6141.00	16.600	122.880	5858.21	-773.61	-799.65	1304.17	40°06'03.718"N	104°53'13.881"W	2.72	
6231.00	14.900	119.580	5944.83	-785.89	-812.34	1325.03	40°06'03.593"N	104°53'13.613"W	2.13	
6321.00	13.380	111.800	6032.11	-795.08	-821.92	1344.77	40°06'03.498"N	104°53'13.359"W	2.70	
6411.00	10.720	116.850	6120.12	-802.38	-829.57	1361.91	40°06'03.423"N	104°53'13.138"W	3.18	
6501.00	7.800	121.280	6208.94	-809.08	-836.52	1374.60	40°06'03.354"N	104°53'12.975"W	3.34	
6590.00	5.790	126.840	6297.31	-814.74	-842.35	1383.35	40°06'03.296"N	104°53'12.862"W	2.37	
6680.00	4.000	132.580	6386.98	-819.46	-847.20	1389.30	40°06'03.248"N	104°53'12.786"W	2.06	
6770.00	1.930	155.740	6476.86	-822.91	-850.70	1392.23	40°06'03.214"N	104°53'12.748"W	2.61	
6860.00	0.890	204.690	6566.83	-824.92	-852.72	1392.56	40°06'03.194"N	104°53'12.744"W	1.67	
7129.00	0.880	257.460	6835.80	-827.33	-855.07	1389.67	40°06'03.171"N	104°53'12.781"W	0.29	
7219.00	8.290	343.270	6925.48	-821.30	-848.99	1387.13	40°06'03.231"N	104°53'12.814"W	9.19	
7309.00	16.330	3.370	7013.38	-802.45	-830.11	1386.00	40°06'03.417"N	104°53'12.828"W	9.99	
7398.00	25.350	4.840	7096.47	-770.87	-798.57	1388.35	40°06'03.729"N	104°53'12.798"W	10.15	
7488.00	34.370	1.740	7174.45	-726.14	-753.88	1390.75	40°06'04.171"N	104°53'12.767"W	10.16	
7578.00	45.900	353.500	7243.19	-668.47	-696.15	1387.85	40°06'04.741"N	104°53'12.804"W	14.08	
7668.00	49.030	353.330	7304.02	-602.77	-630.28	1380.24	40°06'05.392"N	104°53'12.902"W	3.48	
7758.00	51.910	349.960	7361.31	-534.33	-561.63	1370.12	40°06'06.071"N	104°53'13.032"W	4.31	
7848.00	58.510	351.030	7412.63	-461.73	-488.77	1357.95	40°06'06.791"N	104°53'13.189"W	7.40	
7938.00	73.360	353.130	7449.23	-380.79	-407.60	1346.74	40°06'07.593"N	104°53'13.333"W	16.64	
8027.00	81.630	353.190	7468.49	-294.82	-321.40	1336.41	40°06'08.445"N	104°53'13.466"W	9.29	
8117.00	82.180	352.670	7481.16	-206.63	-232.98	1325.44	40°06'09.318"N	104°53'13.607"W	0.84	
8166.00†	84.425	354.101	7486.88	-158.41	-184.64	1319.84	40°06'09.796"N	104°53'13.679"W	5.42	7" CASING POINT
8243.00	87.960	356.330	7491.99	-82.01	-108.09	1313.43	40°06'10.552"N	104°53'13.761"W	5.42	
8333.00	89.660	357.370	7493.86	7.71	-18.25	1308.49	40°06'11.440"N	104°53'13.825"W	2.21	
8423.00	90.760	357.630	7493.53	97.53	71.66	1304.56	40°06'12.329"N	104°53'13.875"W	1.26	
8513.00	90.580	359.280	7492.48	187.42	161.62	1302.14	40°06'13.218"N	104°53'13.907"W	1.84	
8602.00	91.470	359.220	7490.88	276.36	250.59	1300.97	40°06'14.097"N	104°53'13.922"W	1.00	
8692.00	91.470	1.810	7488.58	366.32	340.55	1301.78	40°06'14.986"N	104°53'13.911"W	2.88	
8782.00	91.230	2.510	7486.45	456.28	430.46	1305.17	40°06'15.875"N	104°53'13.867"W	0.82	
8872.00	89.960	2.550	7485.52	546.24	520.37	1309.14	40°06'16.763"N	104°53'13.816"W	1.41	
8962.00	90.430	2.720	7485.21	636.21	610.27	1313.28	40°06'17.651"N	104°53'13.763"W	0.56	
9052.00	90.060	3.230	7484.83	726.16	700.15	1317.95	40°06'18.540"N	104°53'13.703"W	0.70	

REFERENCE WELLPATH IDENTIFICATION			
Operator	KERR-MCGEE OIL & GAS ONSHORE LP (LAMBERT STATE PLANE COORD)	Slot	SLOT#07 HUNZIKER 26N-28HZ (433'FSL & 1563'FEL, SEC.28)
Area	COLORADO	Well	HUNZIKER 26N-28HZ
Field	WELD COUNTY (KERR MCGEE)	Wellbore	HUNZIKER 26N-28HZ AWB <12728>
Facility	SEC.28-T2N-R67W		

WELLPATH DATA (117 stations)										
MD [ft]	Inclination [°]	Azimuth [°]	TVD [ft]	Vert Sect [ft]	North [ft]	East [ft]	Latitude	Longitude	DLS ["/100ft]	Comments
9141.00	90.860	1.340	7484.11	815.14	789.07	1321.50	40°06'19.418"N	104°53'13.657"W	2.31	
9231.00	89.960	1.360	7483.47	905.13	879.04	1323.62	40°06'20.307"N	104°53'13.630"W	1.00	
9321.00	90.430	1.950	7483.16	995.13	969.01	1326.22	40°06'21.197"N	104°53'13.596"W	0.84	
9411.00	90.090	1.890	7482.76	1085.12	1058.95	1329.24	40°06'22.085"N	104°53'13.557"W	0.38	
9501.00	89.290	2.260	7483.24	1175.11	1148.89	1332.49	40°06'22.974"N	104°53'13.515"W	0.98	
9590.00	89.410	1.620	7484.25	1264.09	1237.84	1335.51	40°06'23.853"N	104°53'13.476"W	0.73	
9770.00	89.660	4.080	7485.71	1443.99	1417.59	1344.46	40°06'25.630"N	104°53'13.361"W	1.37	
9950.00	89.960	4.770	7486.31	1623.69	1597.05	1358.34	40°06'27.403"N	104°53'13.182"W	0.42	
10130.00	89.960	358.480	7486.44	1803.60	1776.89	1363.44	40°06'29.180"N	104°53'13.117"W	3.49	
10309.00	92.740	359.570	7482.22	1982.40	1955.80	1360.40	40°06'30.948"N	104°53'13.156"W	1.67	
10399.00	91.870	359.300	7478.60	2072.29	2045.72	1359.51	40°06'31.837"N	104°53'13.167"W	1.01	
10579.00	90.800	359.340	7474.41	2252.15	2225.65	1357.38	40°06'33.615"N	104°53'13.194"W	0.59	
10759.00	92.120	1.950	7469.82	2432.06	2405.56	1359.40	40°06'35.393"N	104°53'13.168"W	1.62	
10848.00	91.680	358.560	7466.87	2520.99	2494.50	1359.80	40°06'36.272"N	104°53'13.163"W	3.84	
11028.00	90.210	5.180	7463.90	2700.85	2674.28	1365.67	40°06'38.048"N	104°53'13.087"W	3.77	
11118.00	89.350	4.450	7464.24	2790.66	2763.96	1373.22	40°06'38.934"N	104°53'12.990"W	1.25	
11297.00	89.930	4.440	7465.37	2969.36	2942.41	1387.09	40°06'40.698"N	104°53'12.811"W	0.32	
11477.00	90.000	3.580	7465.48	3149.13	3121.97	1399.68	40°06'42.472"N	104°53'12.649"W	0.48	
11656.00	89.900	2.770	7465.63	3328.01	3300.69	1409.60	40°06'44.239"N	104°53'12.521"W	0.46	
11836.00	89.900	2.030	7465.95	3507.97	3480.54	1417.13	40°06'46.016"N	104°53'12.424"W	0.41	
12016.00	90.030	359.890	7466.06	3687.96	3660.50	1420.15	40°06'47.794"N	104°53'12.385"W	1.19	
12195.00	89.960	358.260	7466.07	3866.84	3839.47	1417.26	40°06'49.563"N	104°53'12.422"W	0.91	
12375.00	92.030	3.470	7462.94	4046.73	4019.35	1419.97	40°06'51.340"N	104°53'12.387"W	3.11	
12465.00	92.550	3.350	7459.35	4136.59	4109.12	1425.32	40°06'52.227"N	104°53'12.318"W	0.59	
12600.00	92.400	4.860	7453.52	4271.28	4243.64	1434.98	40°06'53.557"N	104°53'12.194"W	1.12	
12661.00	92.780	5.060	7450.76	4332.08	4304.35	1440.25	40°06'54.157"N	104°53'12.126"W	0.70	LAST BHI MWD+IFR SURVEYS
12728.00	92.780	5.060	7447.51	4398.85	4371.01	1446.15	40°06'54.816"N	104°53'12.050"W	0.00	PROJECTION TO BIT

HOLE & CASING SECTIONS - Ref Wellbore: HUNZIKER 26N-28HZ AWB <12728> Ref Wellpath: HUNZIKER 26N-28HZ AWP										
String/Diameter	Start MD [ft]	End MD [ft]	Interval [ft]	Start TVD [ft]	End TVD [ft]	Start N/S [ft]	Start E/W [ft]	End N/S [ft]	End E/W [ft]	
13.5in Open Hole	20.00	1330.00	1310.00	20.00	1329.96	0.00	0.00	1.65	0.02	
9.625in Casing Surface	20.00	1320.00	1300.00	20.00	1319.96	0.00	0.00	1.64	-0.06	
8.75in Open Hole	1330.00	8175.00	6845.00	1329.96	7487.72	1.65	0.02	-175.72	1318.93	
7in Casing Intermediate	20.00	8166.00	8146.00	20.00	7486.88	0.00	0.00	-184.64	1319.84	
6.125in Open Hole	8175.00	12728.00	4553.00	7487.72	7447.51	-175.72	1318.93	4371.01	1446.15	

REFERENCE WELLPATH IDENTIFICATION			
Operator	KERR-MCGEE OIL & GAS ONSHORE LP (LAMBERT STATE PLANE COORD)	Slot	SLOT#07 HUNZIKER 26N-28HZ (433'FSL & 1563'FEL, SEC.28)
Area	COLORADO	Well	HUNZIKER 26N-28HZ
Field	WELD COUNTY (KERR MCGEE)	Wellbore	HUNZIKER 26N-28HZ AWB <12728>
Facility	SEC.28-T2N-R67W		

TARGETS								
Name	TVD [ft]	North [ft]	East [ft]	Grid East [US ft]	Grid North [US ft]	Latitude	Longitude	Shape
SEC.04-T1N-R67W SECTION LINES	5069.00	-0.38	15.14	3170131.01	1281033.39	40°06'11.617"N	104°53'30.469"W	polygon
SEC.28-T2N-R67W SECTION LINES	5069.00	-0.38	15.14	3170131.01	1281033.39	40°06'11.617"N	104°53'30.469"W	polygon
SEC.33-T2N-R67W SECTION LINES	5069.00	-0.38	15.14	3170131.01	1281033.39	40°06'11.617"N	104°53'30.469"W	polygon
HUNZIKER 26N-28HZ BHL ON PLAT REV-1 (460'FNL & 120'FEL, SEC.28)	7466.00	4372.64	1456.39	3171542.17	1285416.01	40°06'54.832"N	104°53'11.918"W	point
HUNZIKER 26N-28HZ LANDBOX	7466.00	0.00	0.00	3170115.87	1281033.67	40°06'11.621"N	104°53'30.664"W	polygon

WELLPATH COMPOSITION - Ref Wellbore: HUNZIKER 26N-28HZ AWB <12728> Ref Wellpath: HUNZIKER 26N-28HZ AWP					
Start MD [ft]	End MD [ft]	Positional Uncertainty Model	Log Name/Comment	Wellbore	
20.00	1287.00	ISCWSA MWD, Rev. 2 (Standard)	CATHEDRAL MWD SURVEYS 13.5" <126-1287>	HUNZIKER 26N-28HZ AWB <12728>	
1287.00	8117.00	ISCWSA MWD, Rev. 2, axial magnetic correction (Standard) (MagVAR IFR Wattenberg)	BHI MWD+IFR SURVEYS 8.75" <1376-8117>	HUNZIKER 26N-28HZ AWB <12728>	
8117.00	12661.00	ISCWSA MWD, Rev. 2, axial magnetic correction (Standard) (MagVAR IFR Wattenberg)	BHI MWD+IFR SURVEYS 6.125" <8243-12661>	HUNZIKER 26N-28HZ AWB <12728>	
12661.00	12728.00	Blind Drilling (std)	Projection to bit	HUNZIKER 26N-28HZ AWB <12728>	

REFERENCE WELLPATH IDENTIFICATION			
Operator	KERR-MCGEE OIL & GAS ONSHORE LP (LAMBERT STATE PLANE COORD)	Slot	SLOT#07 HUNZIKER 26N-28HZ (433'FSL & 1563'FEL, SEC.28)
Area	COLORADO	Well	HUNZIKER 26N-28HZ
Field	WELD COUNTY (KERR MCGEE)	Wellbore	HUNZIKER 26N-28HZ AWB <12728>
Facility	SEC.28-T2N-R67W		

WELLPATH COMMENTS					
MD [ft]	Inclination [°]	Azimuth [°]	TVD [ft]	Comment	
126.00	0.700	12.800	126.00	BEGIN MWD SURVEYS	
1287.00	0.300	85.900	1286.96	TIE-ONTO MWD SURVEYS	
1376.00	0.630	74.450	1375.96	BEGIN BHI MWD+IFR SURVEYS	
8166.00	84.425	354.101	7486.88	7" CASING POINT	
12661.00	92.780	5.060	7450.76	LAST BHI MWD+IFR SURVEYS	
12728.00	92.780	5.060	7447.51	PROJECTION TO BIT	