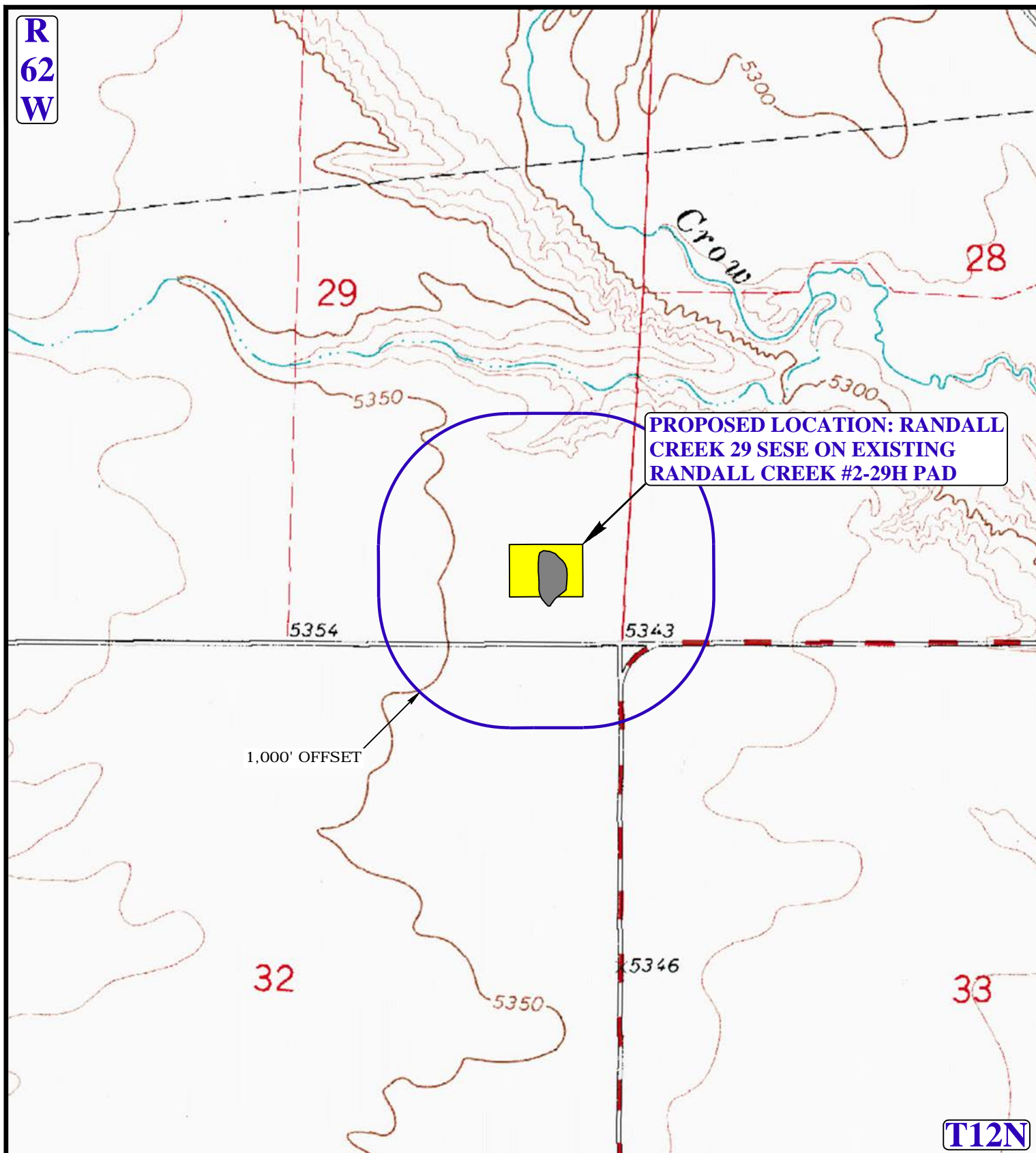


R
62
W



LEGEND:

- EXISTING DRAINAGE
- 1000' OFFSET BOUNDARY

EOG RESOURCES, INC.

RANDALL CREEK 29 SESE ON
EXISTING RANDALL CREEK #2-29H PAD
SE 1/4 SE 1/4, SECTION 29, T12N, R62W, 6th P.M.
WELD COUNTY, COLORADO

DRAWN BY: C.R.

DATE DRAWN: 01-27-15

SCALE: 1" = 1000'

REVISED: 05-06-15 C.M.F.

HYDROLOGY MAP

TOPO W

UELS, LLC

Corporate Office * 85 South 200 East
Vernal, UT 84078 * (435) 789-1017

