

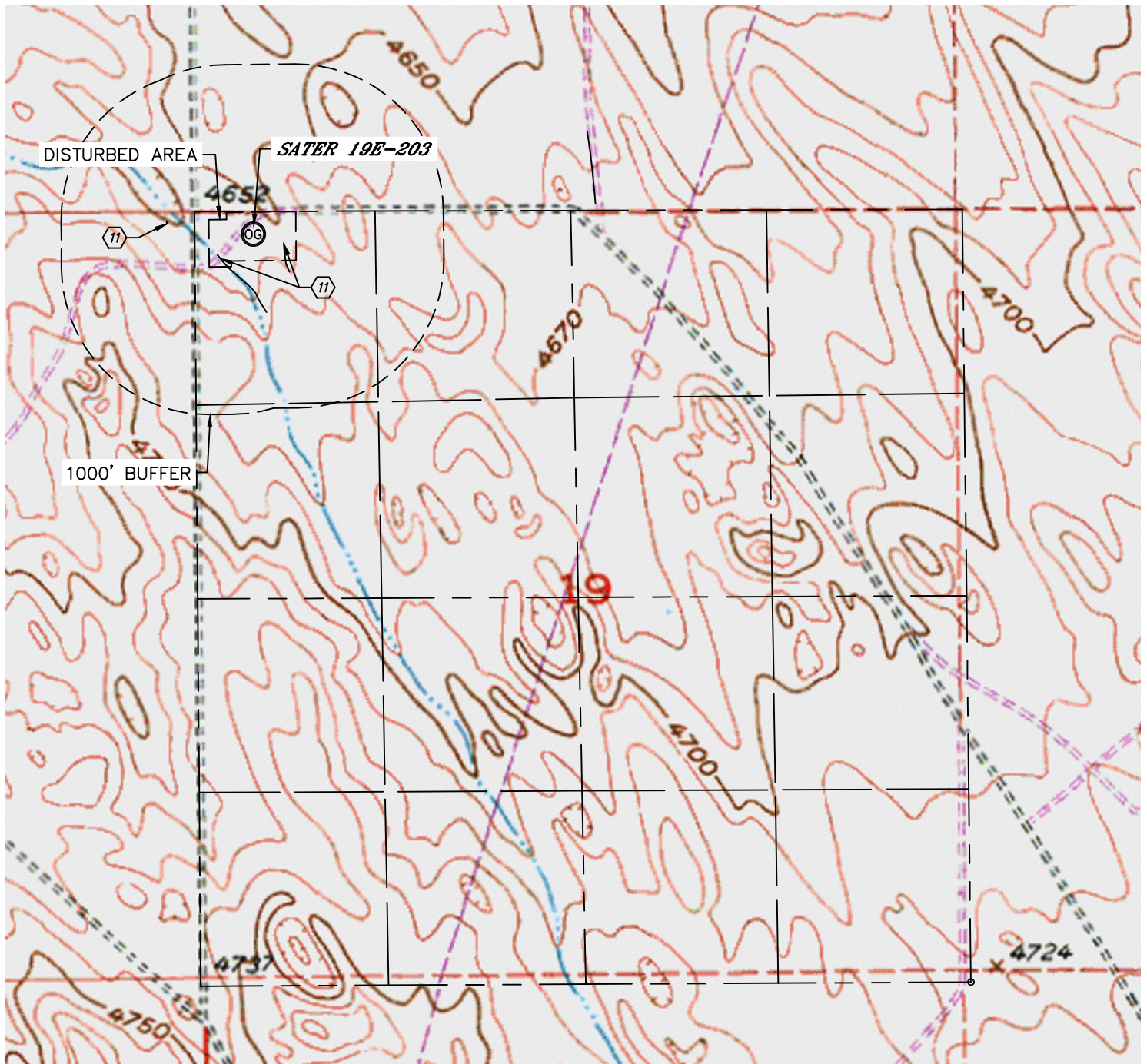


Lat40°, Inc. 6250 W. 10th Street, Unit 2, Greeley, CO 970-515-5294

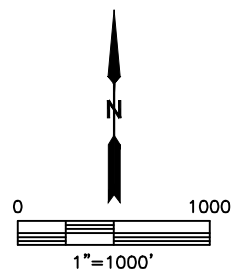
# HYDROLOGY MAP

SATER 4N63W19E PAD

SECTION: 19  
TOWNSHIP: 4N  
RANGE: 63W



11 LOW AREA 216' SE, 277' SW, 589' NW



NEAREST DOWN GRADIENT SURFACE WATER: LOW AREA 216' SE

DATE: 10/10/2014  
PROJECT#: 2014167