

1801 Broadway
Suite 500
Denver, Colorado 80202



Allison Linz
Regulatory Technician
Tel: 303.398.0355
E-mail: alinz@gwogco.com

April 7, 2015

Colorado Oil and Gas Conservation Commission
1120 Lincoln Street, Suite 801
Denver, Colorado 80203

RE: **Proposed Wellbore Spacing Unit**
Kortum LD 21-364HN

Niobrara New Drill
Township 1 South, Range 67 West, 6th P.M.
NWNE Section 21
Adams County, Colorado

Dear Director:

Great Western Operating Company, LLC is planning to drill the above captioned well in accordance with the provisions of COGCC Rule 318A.e.

Great Western proposed wellbore spacing unit consists of:

- **E2 Section 21**
- **320 Acres**

The 30 day notification time period has passed and we have not received any objections to such well locations or proposed spacing unit, therefore Great Western hereby requests the Director to approve the above mentioned well. Great Western Operating Company, LLC respectfully requests that the COGCC review the enclosed map illustrating the proposed wellbore spacing unit.

Respectfully,

Allison Linz

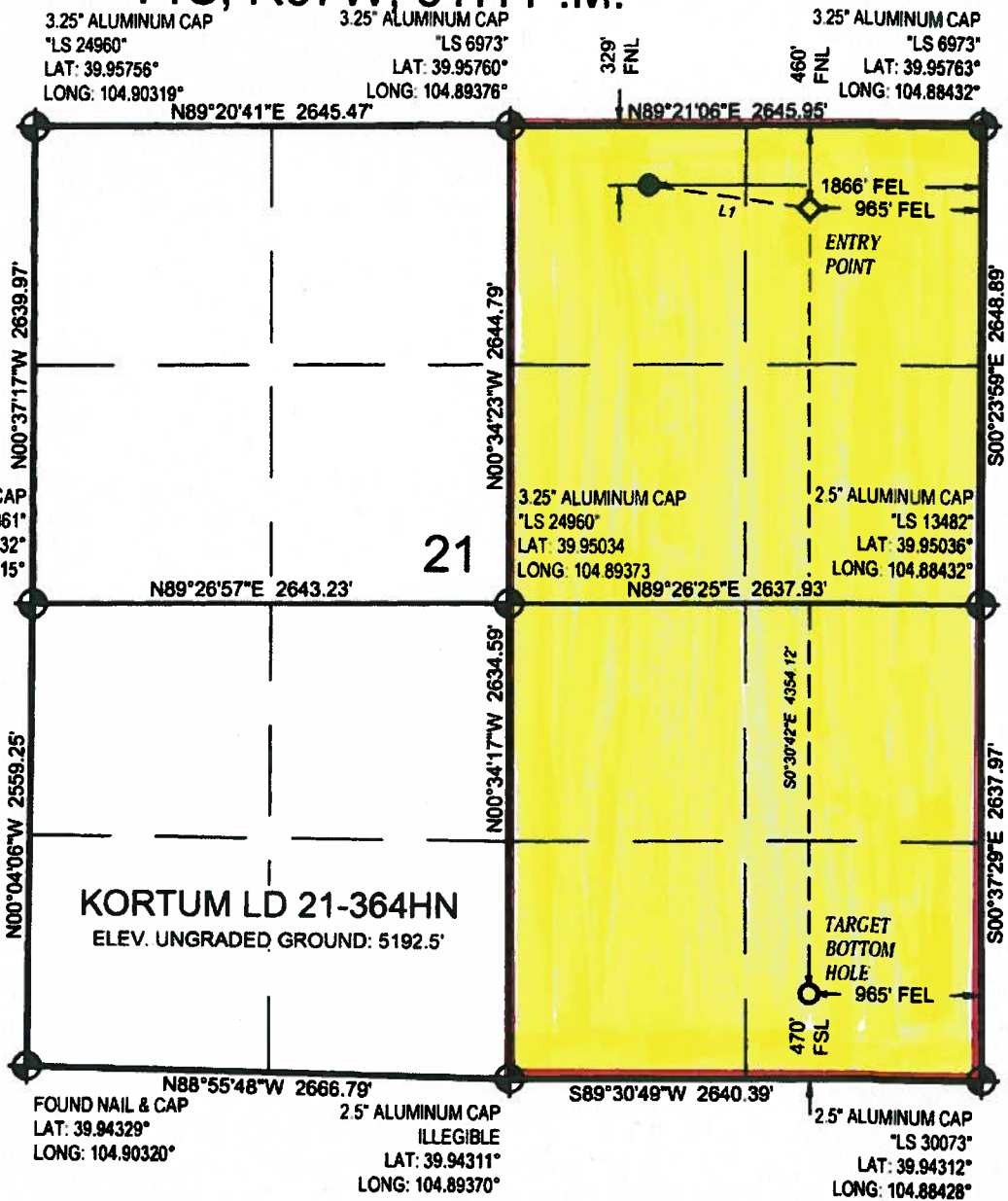
Allison Linz
Regulatory Technician
Great Western Operating Company, LLC

LEGEND

- PROPOSED WELLHEAD
- ◇ ENTRY POINT
- TARGET BOTTOM HOLE
- ⊕ SECTION CORNER

NOTE: UNITS SHOWN ARE IN U.S. SURVEY FEET AS MEASURED ON GROUND. LATITUDE AND LONGITUDE IS SHOWN BASED UPON COLORADO NORTH ZONE STATE PLANE (NAD83).

T1S, R67W, 6TH P.M.



KORTUM LD 21-364HN
ELEV. UNGRADED GROUND: 5192.5'

21

LINE TABLE

LINE	DIRECTION	LENGTH
L1	S82°24'09"E	910.19'

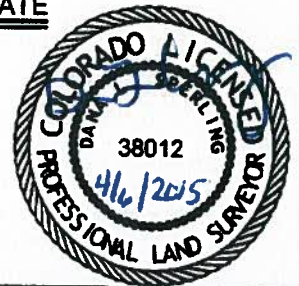
PDOP = 1.5

NAD 83 (TARGET BOTTOM HOLE)	
LATITUDE = 39°56'39.86" (39.944406°)	
LONGITUDE = 104°53'15.84" (104.887732°)	
NAD 27 (TARGET BOTTOM HOLE)	
LATITUDE = 39°56'39.92" (39.944421°)	
LONGITUDE = 104°53'13.92" (104.887201°)	
NAD 83 (ENTRY POINT)	NAD 83 (SURFACE LOCATION)
LATITUDE = 39°57'22.88" (39.956355°)	LATITUDE = 39°57'24.13" (39.956702°)
LONGITUDE = 104°53'15.95" (104.887763°)	LONGITUDE = 104°53'27.52" (104.890977°)
NAD 27 (ENTRY POINT)	NAD 27 (SURFACE LOCATION)
LATITUDE = 39°57'22.93" (39.956370°)	LATITUDE = 39°57'24.18" (39.956718°)
LONGITUDE = 104°53'14.04" (104.887232°)	LONGITUDE = 104°53'25.60" (104.890445°)

CERTIFICATE

THIS IS TO CERTIFY THAT THE ABOVE PLAT WAS PREPARED FROM FIELD NOTES OF ACTUAL SURVEYS MADE BY ME OR UNDER MY DIRECT CHARGE AND THAT THE SAME ARE TRUE AND CORRECT TO THE BEST OF MY PROFESSIONAL KNOWLEDGE AND BELIEF.

DANA L. SPERLING
PROFESSIONAL LAND SURVEYOR
COLORADO LICENSE NUMBER 38012



BASIS OF BEARINGS
BASIS OF BEARINGS IS A G.P.S. OBSERVATION

BASIS OF ELEVATION

PUBLISHED VALUES OF NGS CONTROL STATION "J 411" WITH AN ELEVATION OF 5098 FEET (NAVD 88)

GREAT WESTERN OIL & GAS COMPANY

KORTUM LD 21-364HN
NW1/4, NE1/4, SECTION 21, T1S, R67W, 6TH P.M.
ADAMS COUNTY, COLORADO

SURVEYED BY: Dana L. Sperling and J.S.	DATE: 11.19.14
DRAWN BY: LHG	DATE DRAWN: 11.26.14
SCALE: 1" = 1000'	REVISED: 04.06.15

WELL LOCATION PLAT



4600 Table Mountain Drive, Suite 200
Golden, CO 80403
TEL 303.237.2072
FAX 303.237.2650
www.olssonassociates.com

