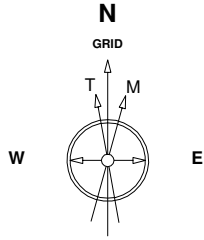


Great Western Operating Company, LLC

Location Colorado
Field Wattenberg
Installation Kortum
Slot Slot E11 - Kortum LD 21-364HN
Well Kortum LD 21-364HN
Wellbore Kortum LD 21-364HN (PWB)

Created by admin
 Date plotted 18-Feb-2015

Plot reference is Kortum LD 21-364HN (PWB).
 Ref wellpath is Kortum LD 21-364HN (PWP#1).
 Coordinates are in Feet reference Slot E11 - Kortum LD 21-364HN.
 True Vertical Depths are reference Rig Datum.
 Measured Depths are reference Rig Datum.
 Rig Datum: Planned Datum #1
 Rig Datum to Mean Sea Level: 5208.00 ft.
 Plot North is aligned to GRID North.

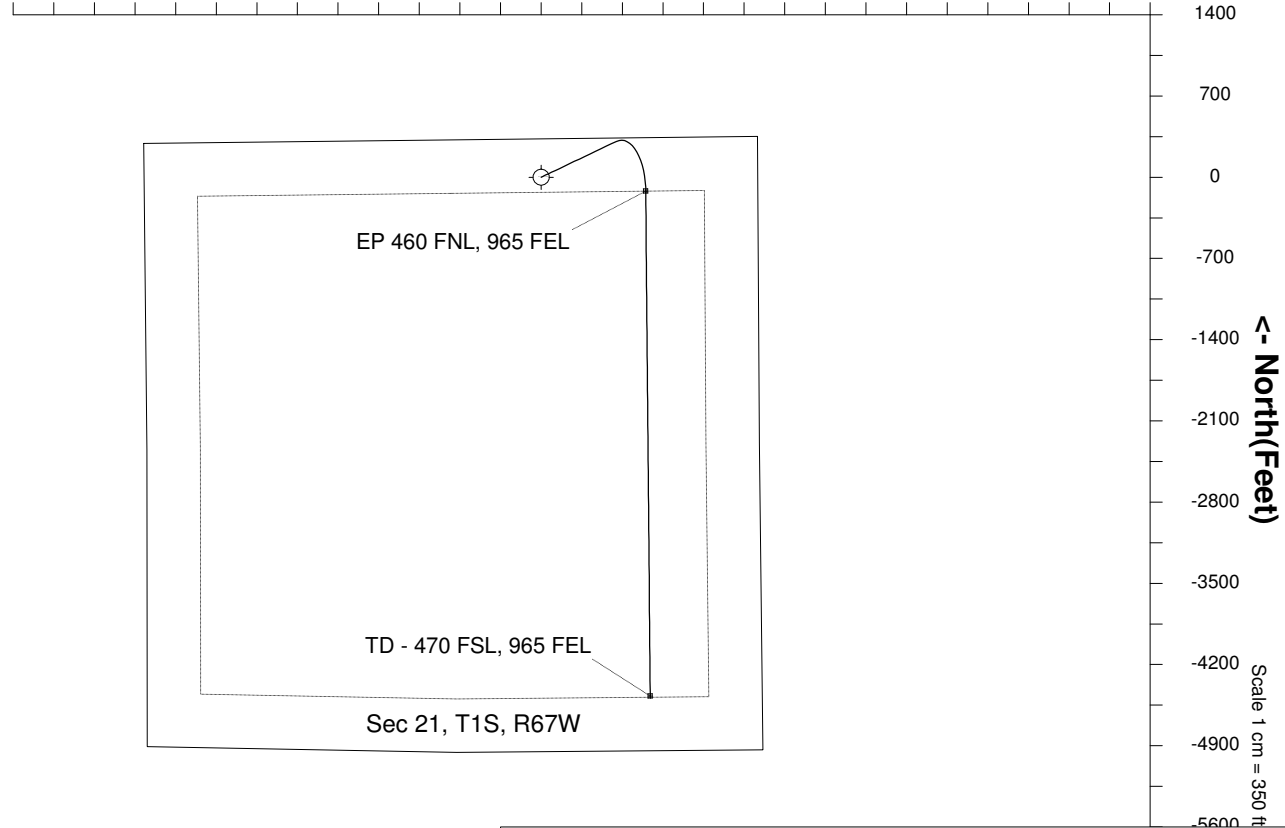
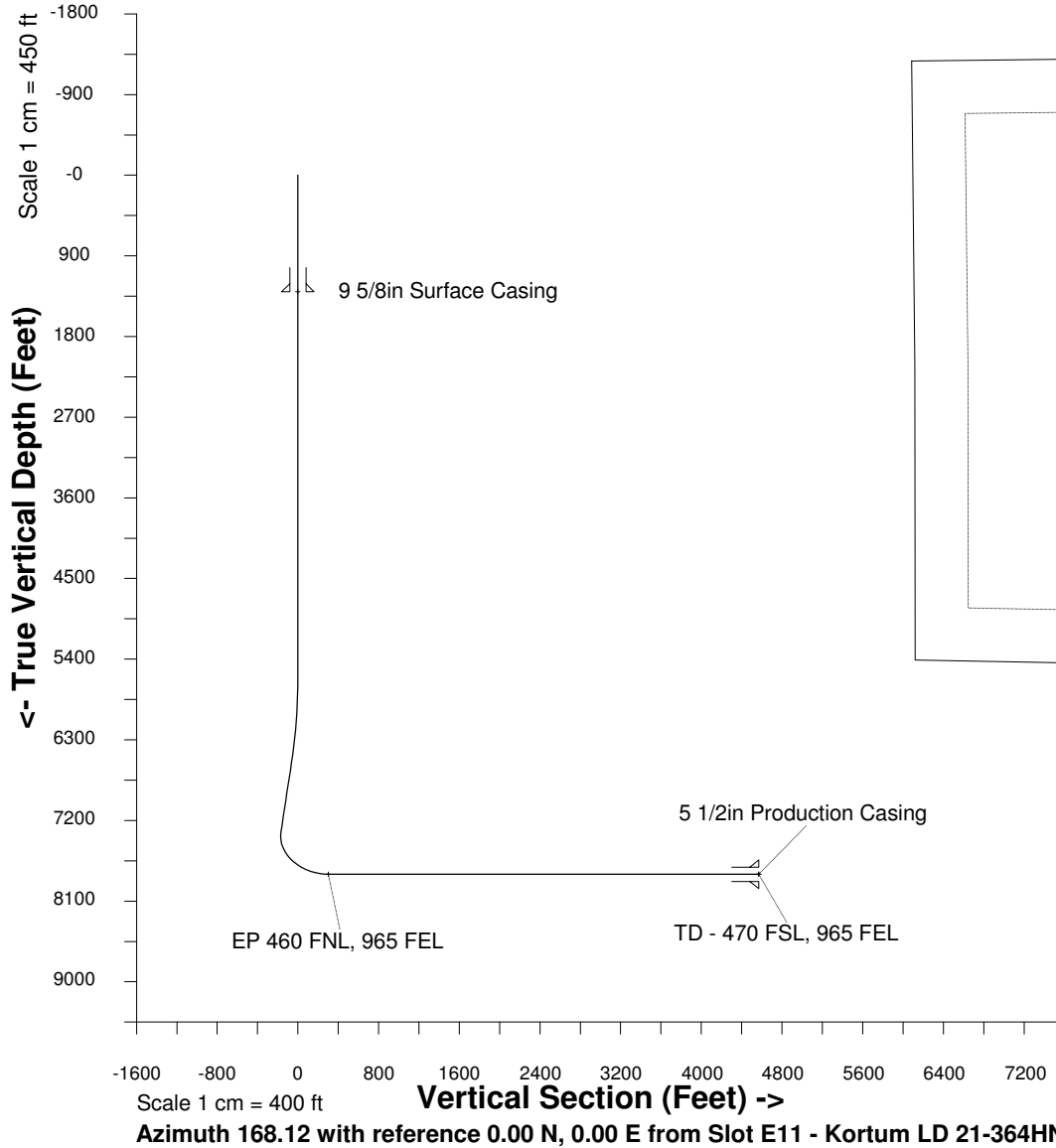


16-Feb-2015
 IGRF Model [1900.0-2020.0] Dip: 66.54 deg Field: 52410.6 nT
 Lat: N39 57 25.5816 Long: W104 53 34.5840 Elev: 5191.80 ft
 Magnetic North is 8.49 deg East of True North
 GRID North is 0.39 deg East of True North
 To correct azimuth from True to GRID subtract 0.39 deg
 To correct azimuth from Magnetic to GRID add 8.09 deg

Scale 1 cm = 350 ft

East (Feet) ->

-4200 -3500 -2800 -2100 -1400 -700 0 700 1400 2100 2800 3500 4200 4900



WELL PROFILE DATA

Point	MD	Inc	Azi	TVD	North	East	deg/100ft	V. Sect
Tie on	16.20	0.00	0.00	16.20	S 0.00	W 0.00		0.00
KOP	5580.00	0.00	64.57	5580.00	S 0.00	W 0.00	0.00	0.00
End of Build	6587.88	30.24	64.57	6541.75	N 111.57	E 234.66	9.84	-60.89
End of Hold	7497.58	30.24	64.57	7327.68	N 308.26	E 648.37	0.00	-168.24
Target EP 460...65 FEL	8284.11	90.00	179.49	7800.00	S 120.20	E 901.87	42.65	303.22
T.D. & Target TD ...FEL	12636.95	90.00	179.49	7800.00	S 4472.86	E 940.61	0.00	4570.70