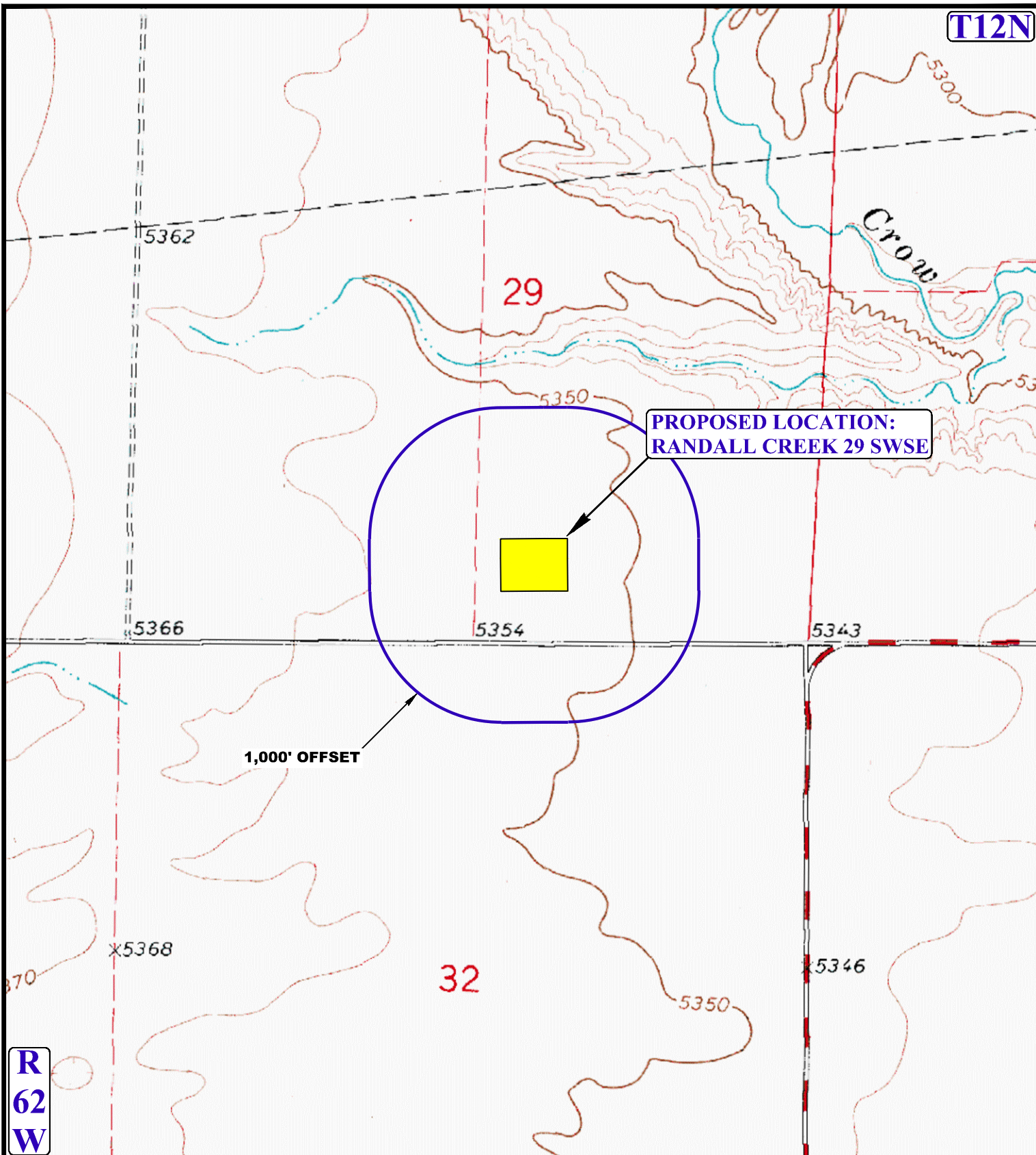


T12N



PROPOSED LOCATION:
RANDALL CREEK 29 SWSE

1,000' OFFSET

R
62
W

LEGEND:

-  1000' OFFSET BOUNDARY
-  EXISTING DRAINAGE

EOG RESOURCES, INC.

RANDALL CREEK 29 SWSE
SW 1/4 SE 1/4, SECTION 29, T12N, R62W, 6th P.M.
WELD COUNTY, COLORADO



DRAWN BY: R.C.	DATE DRAWN: 05-08-15
SCALE: 1" = 1000'	REVISED: 00-00-00



UELS, LLC
Corporate Office * 85 South 200 East
Vernal, UT 84078 * (435) 789-1017

HYDROLOGY MAP

TOPO W