

LEGEND:

 PROPOSED LOCATION

EOG RESOURCES, INC.

RANDALL CREEK 29 SWSE
SW 1/4 SE 1/4, SECTION 29, T12N, R62W, 6th P.M.
WELD COUNTY, COLORADO

DRAWN BY: R.C.

DATE DRAWN: 05-08-15

SCALE: 1:100,000

REVISED: 00-00-00

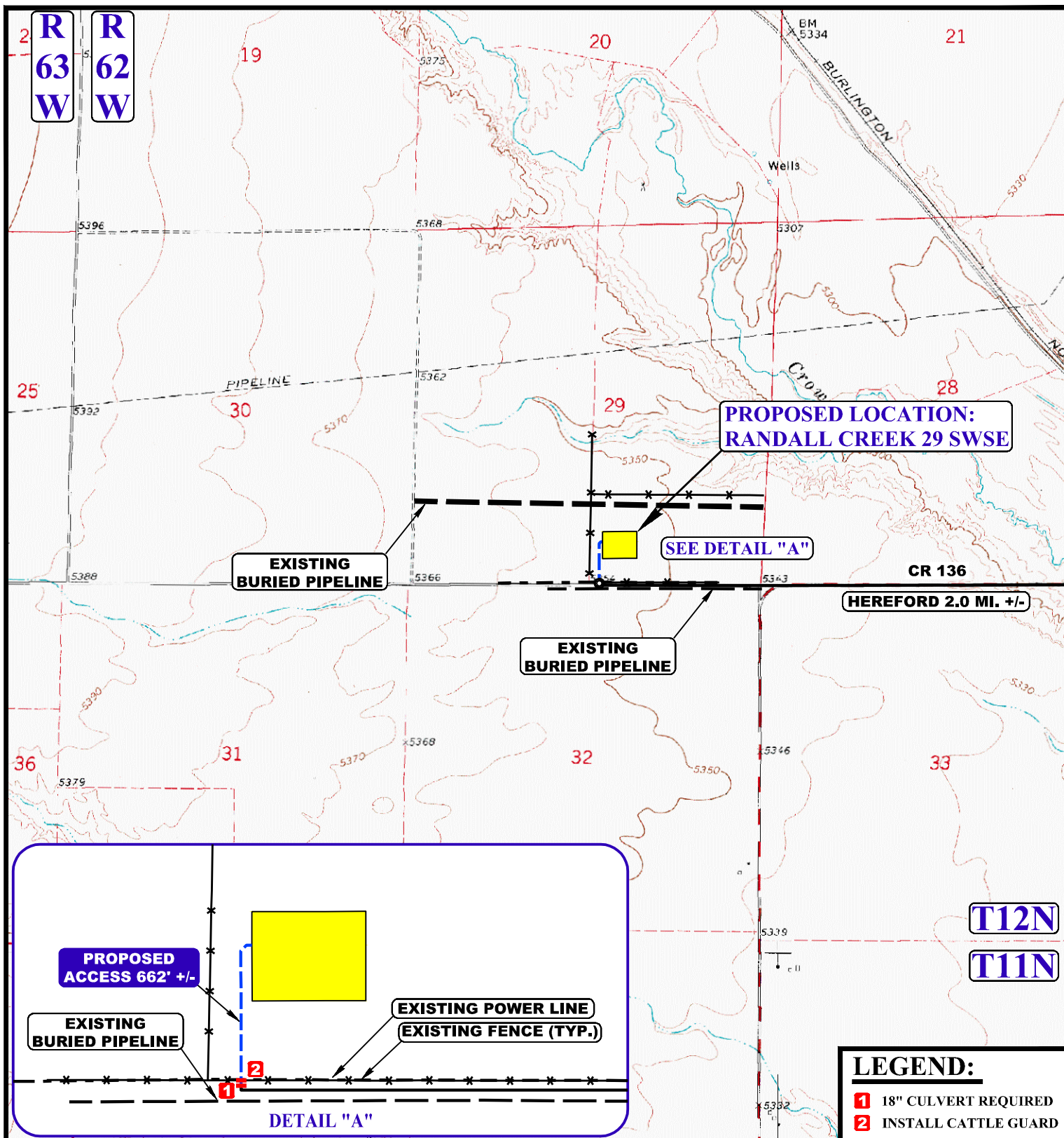
ACCESS ROAD MAP

TOPO A



UELS, LLC
 Corporate Office * 85 South 200 East
 Vernal, UT 84078 * (435) 789-1017





NOTE: PARCEL DATA SHOWN HAS BEEN OBTAINED FROM VARIOUS SOURCES AND SHOULD BE USED FOR MAPPING, GRAPHIC AND PLANNING PURPOSES ONLY. NO WARRANTY IS MADE BY UINTAH ENGINEERING AND LAND SURVEYING (UELS) FOR ACCURACY OF THE PARCEL DATA.

LEGEND:

- EXISTING ROAD
- PROPOSED ROAD
- * * EXISTING FENCE
- - - EXISTING POWER LINE
- - - EXISTING PIPELINE

EOG RESOURCES, INC.

RANDALL CREEK 29 SWSE
SW 1/4 SE 1/4, SECTION 29, T12N, R62W, 6th P.M.
WELD COUNTY, COLORADO

DRAWN BY: R.C.

DATE DRAWN: 05-08-15

SCALE: 1" = 2000'

REVISED: 00-00-00

ACCESS ROAD MAP

TOPO B



UELS, LLC
 Corporate Office * 85 South 200 East
 Vernal, UT 84078 * (435) 789-1017

