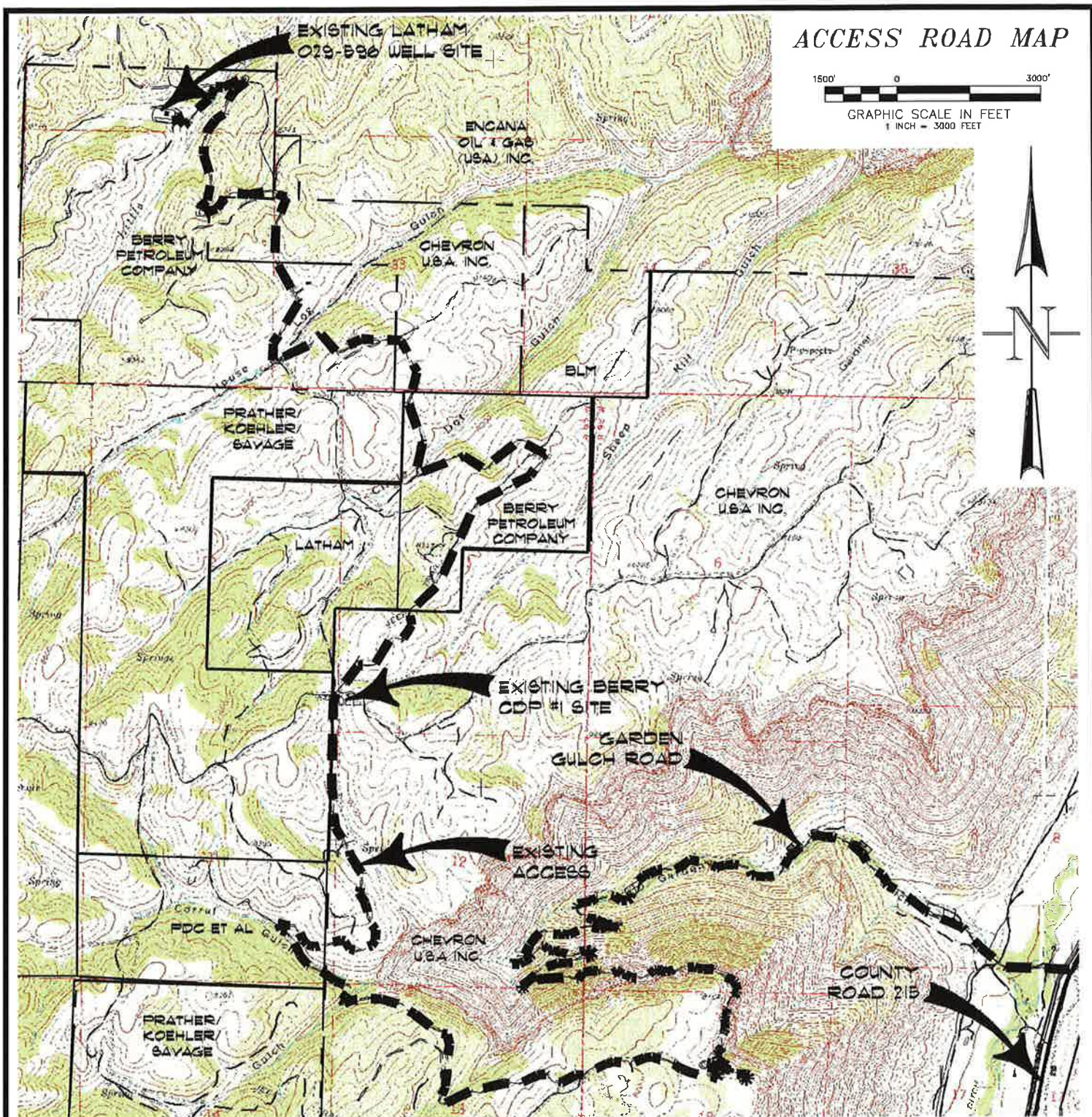


Rule 908.b Figures

**LINN Operating Inc.
O-29 Centralized E&P Waste
Management Facility**

OA Project No. 014-1565

THIS PAGE LEFT BLANK FOR TWO-SIDED DUPLICATION.



ACCESS:
FROM THE GARDEN GULCH ACCESS ROAD OFF COUNTY ROAD 215, PROCEED IN A GENERAL WESTERLY DIRECTION APPROXIMATELY 9.5 MILES TO THE BERRY CDP SITE, CONTINUE FORWARD PAST THE BERRY CDP SITE IN A GENERAL NORTHERLY DIRECTION APPROXIMATELY 5.1 MILES TO AN INTERSECTION WITH A DIRT/GRAVEL ROAD ON THE LEFT, PROCEED LEFT IN A GENERAL SOUTHWESTERLY DIRECTION APPROXIMATELY 0.2 MILES TO AN INTERSECTION WITH A WELL PAD ACCESS ROAD ON THE RIGHT, PROCEED RIGHT IN A GENERAL NORTHWESTERLY DIRECTION APPROXIMATELY 450 FEET TO THE EXISTING LATHAM 029-596 WELL PAD, BEING THE LOCATION.



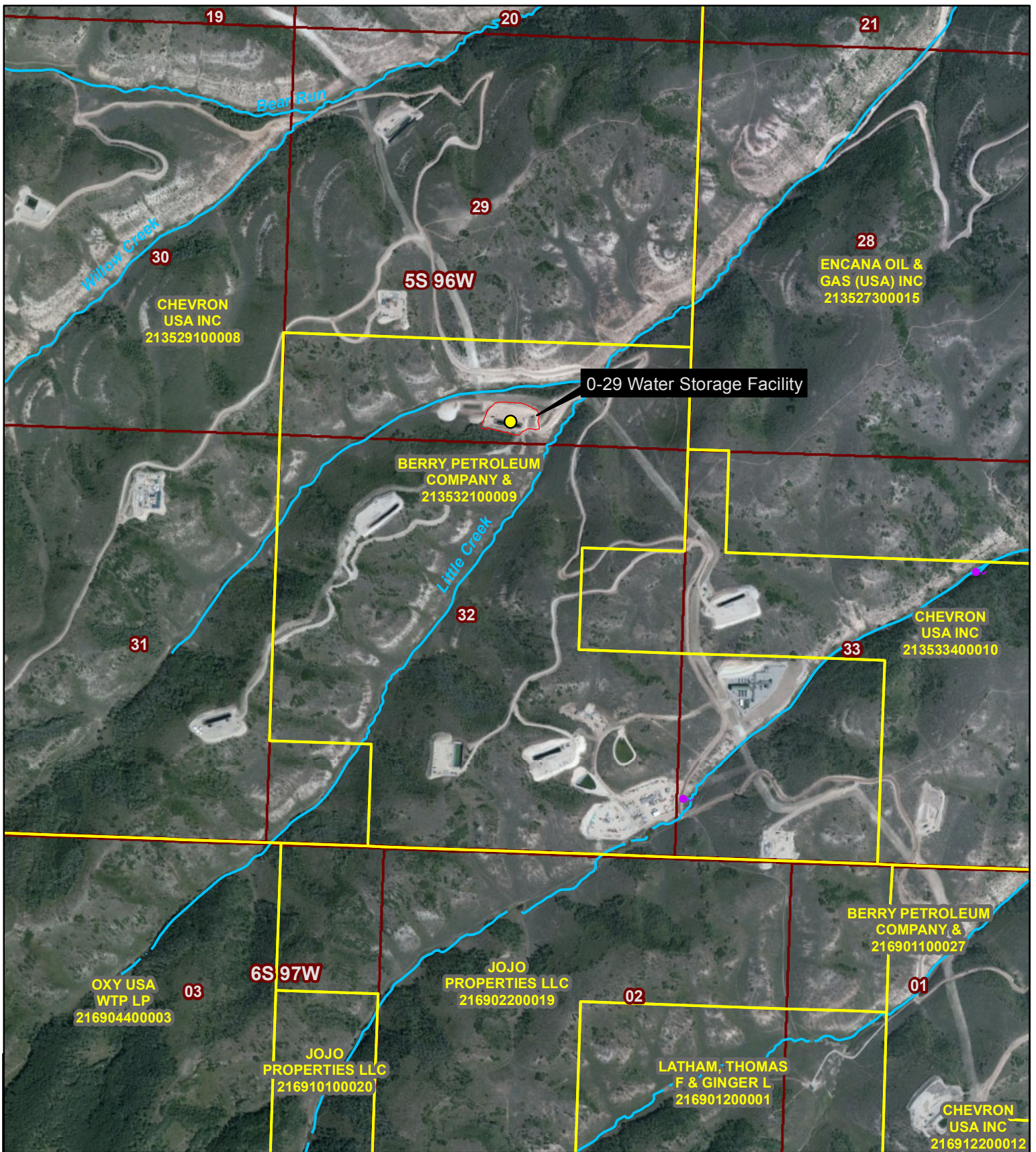
CONSTRUCTION SURVEYS, INC.
0012 SUNRISE BLVD.
SILT, CO 81652
(970)876-5753

Latham 029-596
SW1/4 SE1/4 OF SECTION 29, T. 5 S., R. 96 W.
BERRY PETROLEUM COMPANY

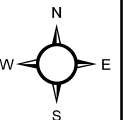
SCALE: 1" = 3000'

SHEET: 4 of 11

THIS PAGE LEFT BLANK FOR TWO-SIDED DUPLICATION.

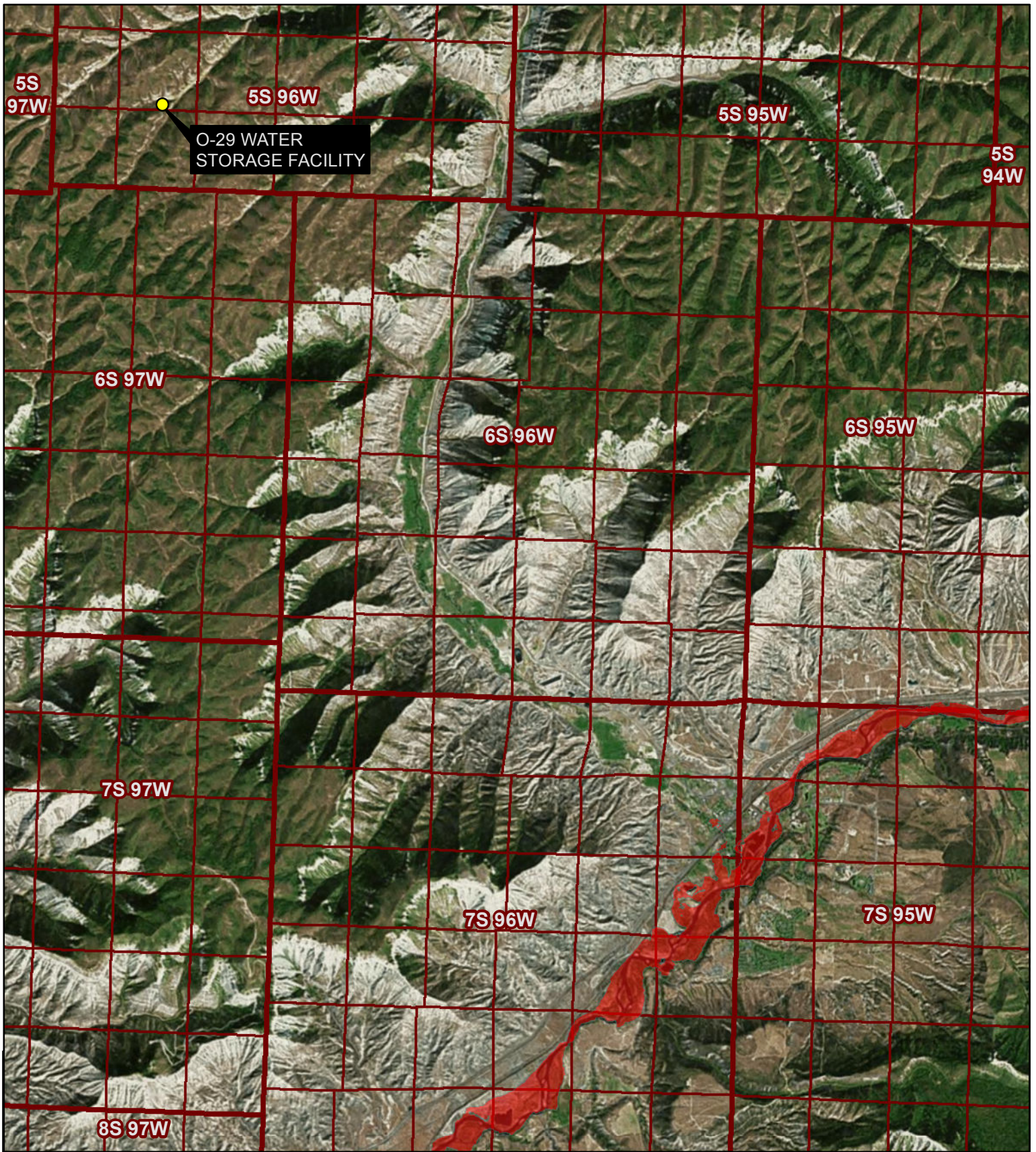


- Legend**
- Parcels
 - Perennial Stream
 - 0-29 Water Storage Facility Boundary
 - 0-29 Water Storage Facility



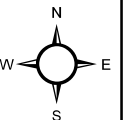
PROJECT NO:	014-1565	ADJACENT PROPERTY OWNERS MAP LINN ENERGY O-29 WATER STORAGE FACILITY		760 HORIZON DR., SUITE 102 GRAND JUNCTION, CO 81506 TEL 970.263.7800 FAX 970.263.7456	FIGURE
DRAWN BY:	JWH				AP-1
DATE:	11/11/2014				

THIS PAGE LEFT BLANK FOR TWO-SIDED DUPLICATION.



Legend

- O-29 WATER STORAGE FACILITY
- Floodplain



PROJECT NO: 014-1565

DRAWN BY: JWH

DATE: 11/11/2014

FLOODPLAIN MAP

LINN ENERGY O-29 WATER
STORAGE FACILITY
GARFIELD COUNTY, COLORADO

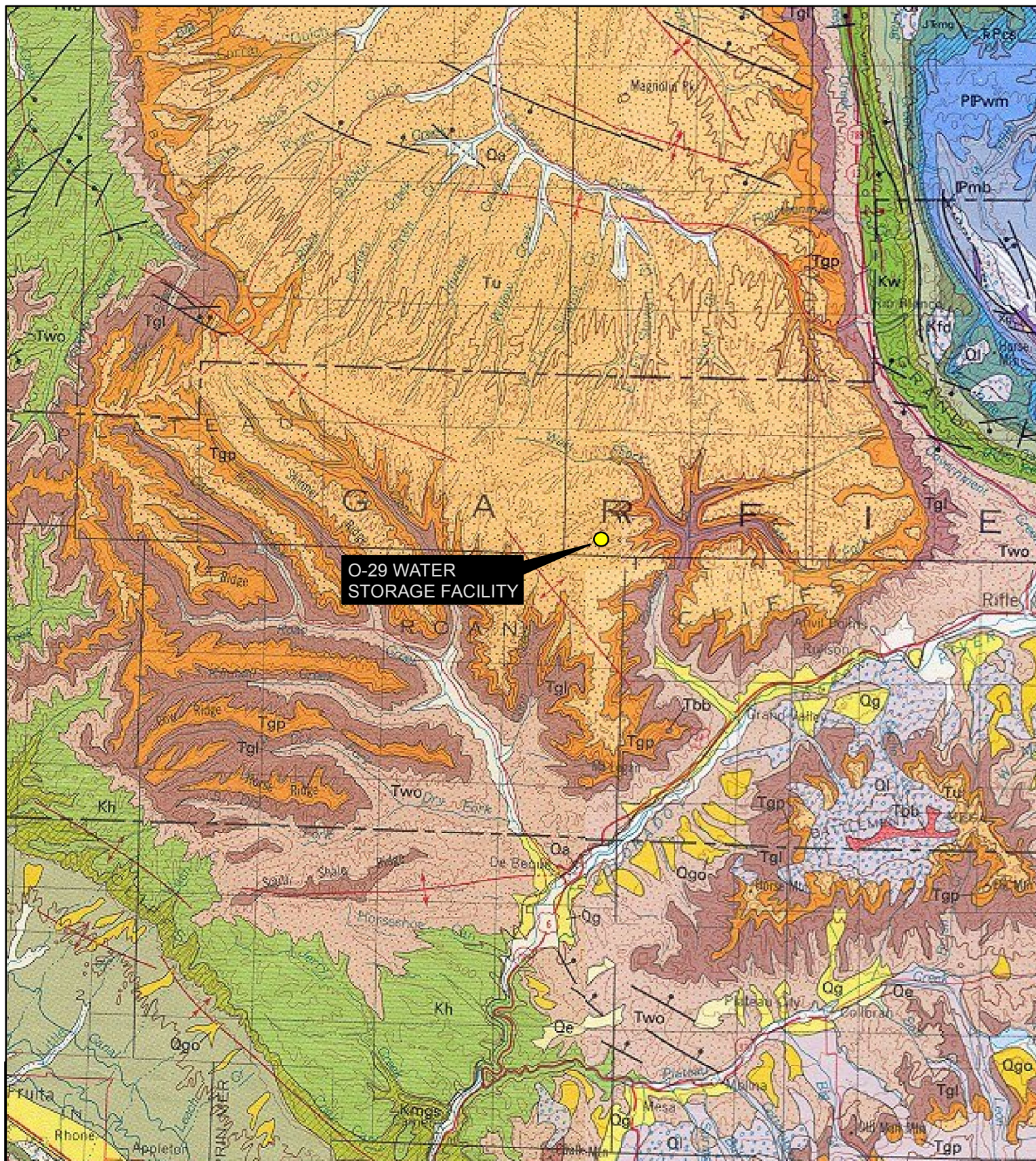


760 HORIZON DR.,
SUITE 102
GRAND JUNCTION,
CO 81506
TEL 970.263.7800
FAX 970.263.7456

FIGURE

F-1

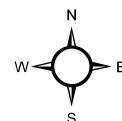
THIS PAGE LEFT BLANK FOR TWO-SIDED DUPLICATION.



O-29 WATER
STORAGE FACILITY

Legend

● O-29 WATER STORAGE FACILITY



PROJECT NO: 014-1565

DRAWN BY: JWH

DATE: 11/11/2014

COLORADO GEOLOGY MAP

LINN ENERGY O-29 WATER
STORAGE FACILITY
GARFIELD COUNTY, COLORADO

OLSSON
ASSOCIATES

760 HORIZON DR.,
SUITE 102
GRAND JUNCTION,
CO 81506
TEL 970.263.7800
FAX 970.263.7456

FIGURE

G-1

THIS PAGE LEFT BLANK FOR TWO-SIDED DUPLICATION.

LEGEND:

● Oil and Gas Well Location

● Permitted Water Well Location

□ SITE

Tu – Uinta Formation

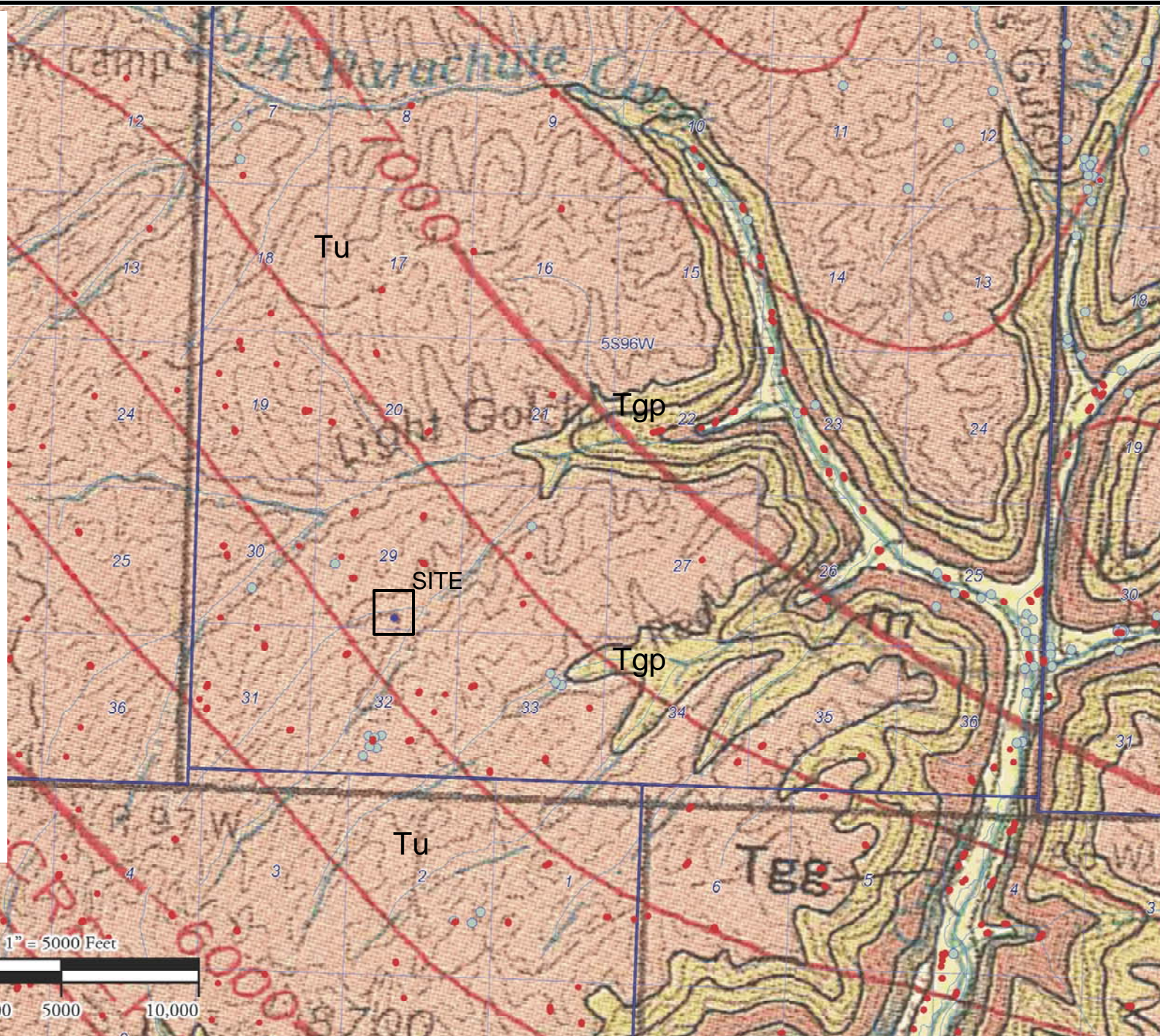
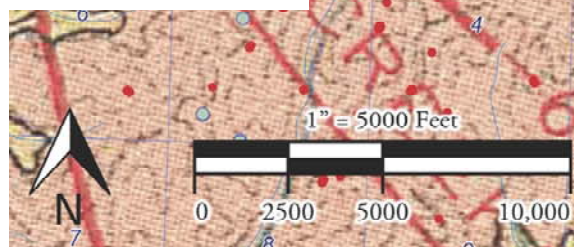
Tgp – Parachute Creek Member - Green River Formation

Tgg – Garden Gulch Member Green River Formation

M Mahogany Zone

Structure Contours drawn on top of the Dakota Sandstone

Base Map from the Geologic and Structural Map of the Grand Junction Quadrangle, Colorado and Utah (Cashion, 1973)



PROJECT NO: 014-1565

DRAWN BY: JWH

DATE: 11/4/2014

HYDROGEOLOGIC MAP

Linn O-29 Centralized E&P Waste Management Facility
SW ¼ SE ¼ 29 T5S R96W - Garfield County, Colorado

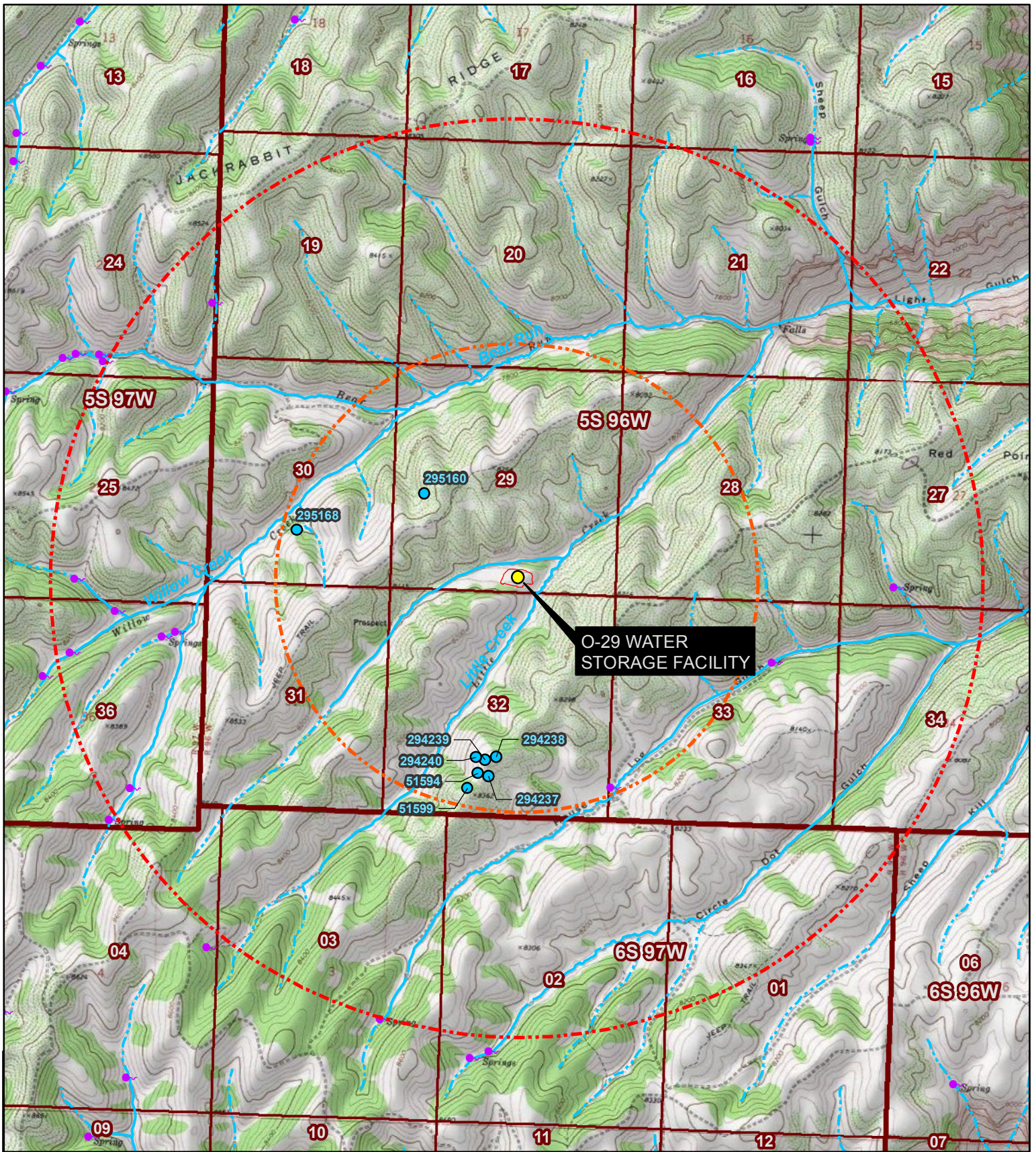
OLSSON
ASSOCIATES

4690 Table Mountain Drive #200
Golden, Colorado 80403
TEL 303.237.2072
FAX 303.237.2659

FIGURE

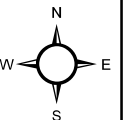
H-1

THIS PAGE LEFT BLANK FOR TWO-SIDED DUPLICATION.



Legend

- Water Wells Within 1 Mile ● Spring/Seep ● O-29 WATER STORAGE FACILITY
- 1 Mile Buffer — Perennial Stream O-29 Water Storage Facility Boundary
- 2 Mile Buffer - - - Intermittent Stream



PROJECT NO: 014-1565

DRAWN BY: JWH

DATE: 11/11/2014

HYDROGRAPHY MAP

LINN ENERGY O-29 WATER
STORAGE FACILITY
GARFIELD COUNTY, COLORADO



760 HORIZON DR.,
SUITE 102
GRAND JUNCTION,
CO 81506
TEL 970.263.7800
FAX 970.263.7456

FIGURE

H-2

THIS PAGE LEFT BLANK FOR TWO-SIDED DUPLICATION.

LEGEND:

● Oil and Gas Well Location

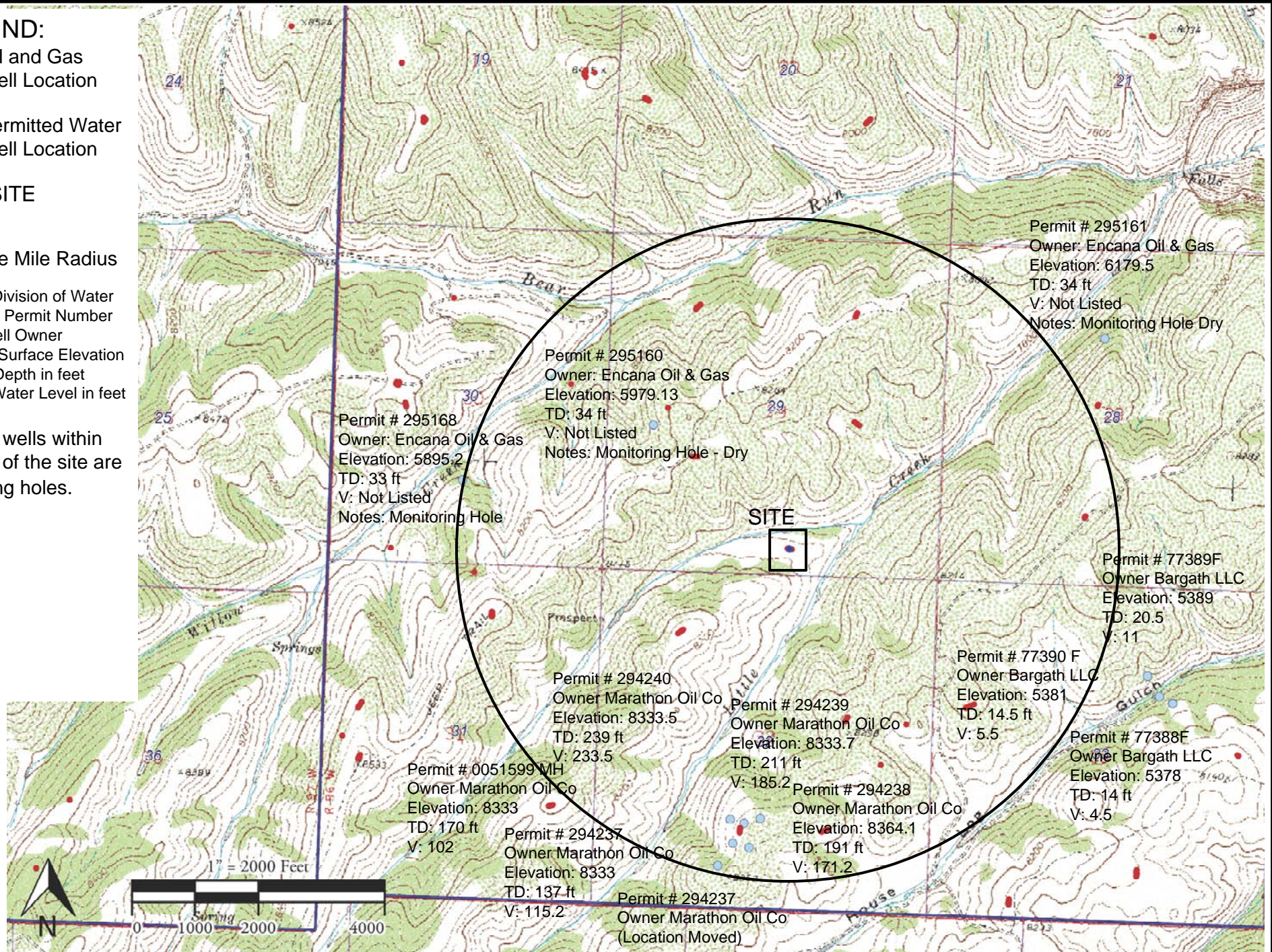
● Permitted Water Well Location

□ SITE

○ One Mile Radius

Permit # Division of Water Resources Permit Number
Owner: Well Owner
Elevation: Surface Elevation
TD: Total Depth in feet
V: Static Water Level in feet

Note: All wells within one mile of the site are monitoring holes.



PROJECT NO: 014-1565

DRAWN BY: JWH

DATE: 11/4/2014

PERMITTED WATER WELLS MAP

Linn O-29 Centralized E&P Waste Management Facility
SW ¼ SE ¼ 29 T5S R96W - Garfield County, Colorado

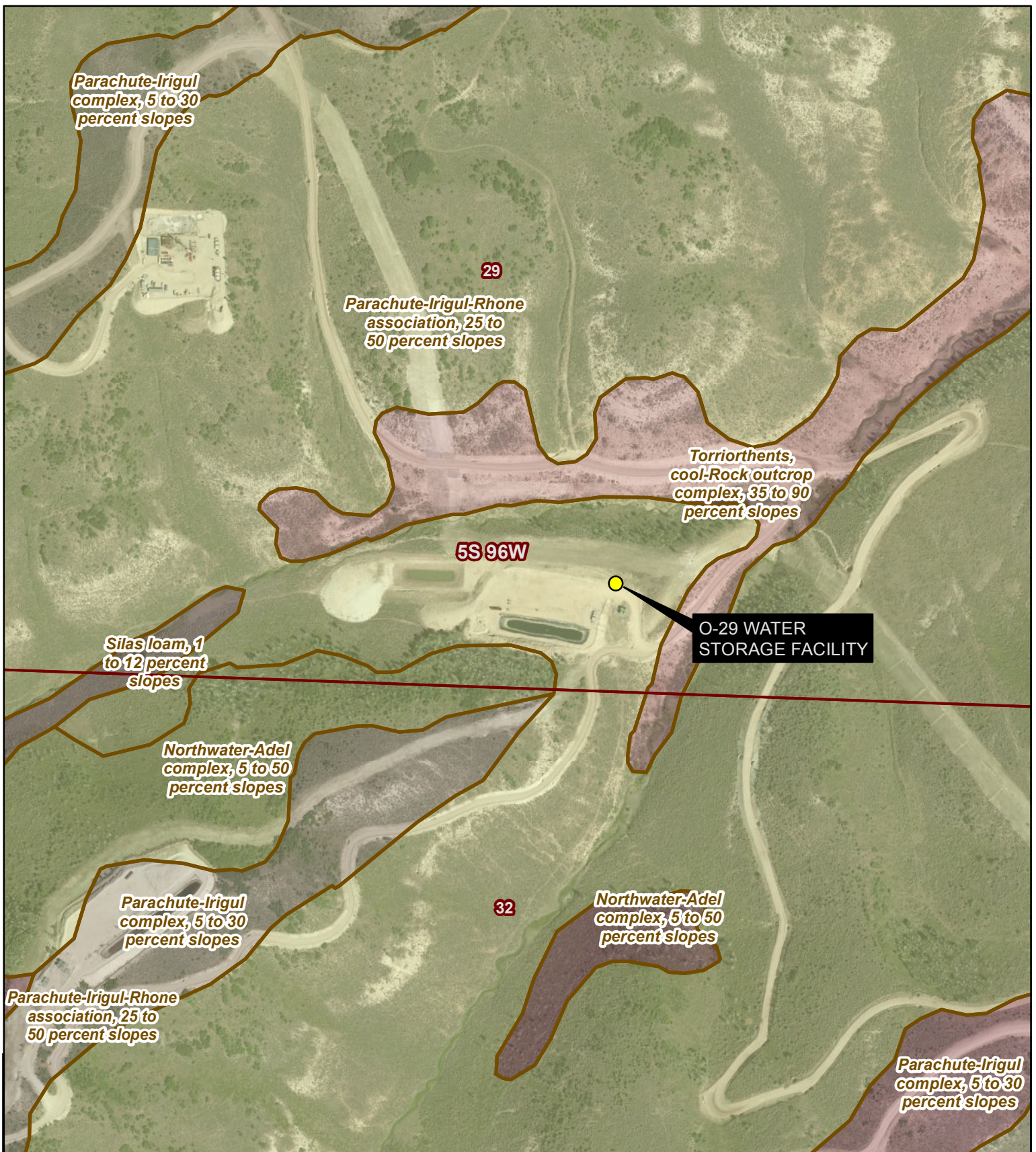
OLSSON
ASSOCIATES

4690 Table Mountain Drive #200
Golden, Colorado 80403
TEL 303.237.2072
FAX 303.237.2659

FIGURE

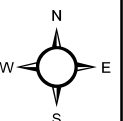
PW-1

THIS PAGE LEFT BLANK FOR TWO-SIDED DUPLICATION.



Legend

● O-29 WATER STORAGE FACILITY



PROJECT NO: 014-1565

DRAWN BY: JWH

DATE: 11/11/2014

SSURGO SOILS MAP

LINN ENERGY O-29 WATER
STORAGE FACILITY
GARFIELD COUNTY, COLORADO



760 HORIZON DR.,
SUITE 102
GRAND JUNCTION,
CO 81506
TEL 970.263.7800
FAX 970.263.7456

FIGURE

S-1

THIS PAGE LEFT BLANK FOR TWO-SIDED DUPLICATION.

LEGEND:

● Oil and Gas
Well Location

● Water Well
Location

□ SITE



PROJECT NO: 014-1565

DRAWN BY: JWH

DATE: 11/4/2014

SITE LOCATION MAP

Linn O-29 Centralized E&P Waste Management Facility
SW ¼ SE ¼ 29 T5S R96W - Garfield County, Colorado

OLSSON
ASSOCIATES

4690 Table Mountain Drive #200
Golden, Colorado 80403
TEL 303.237.2072
FAX 303.237.2659

FIGURE

SL-1

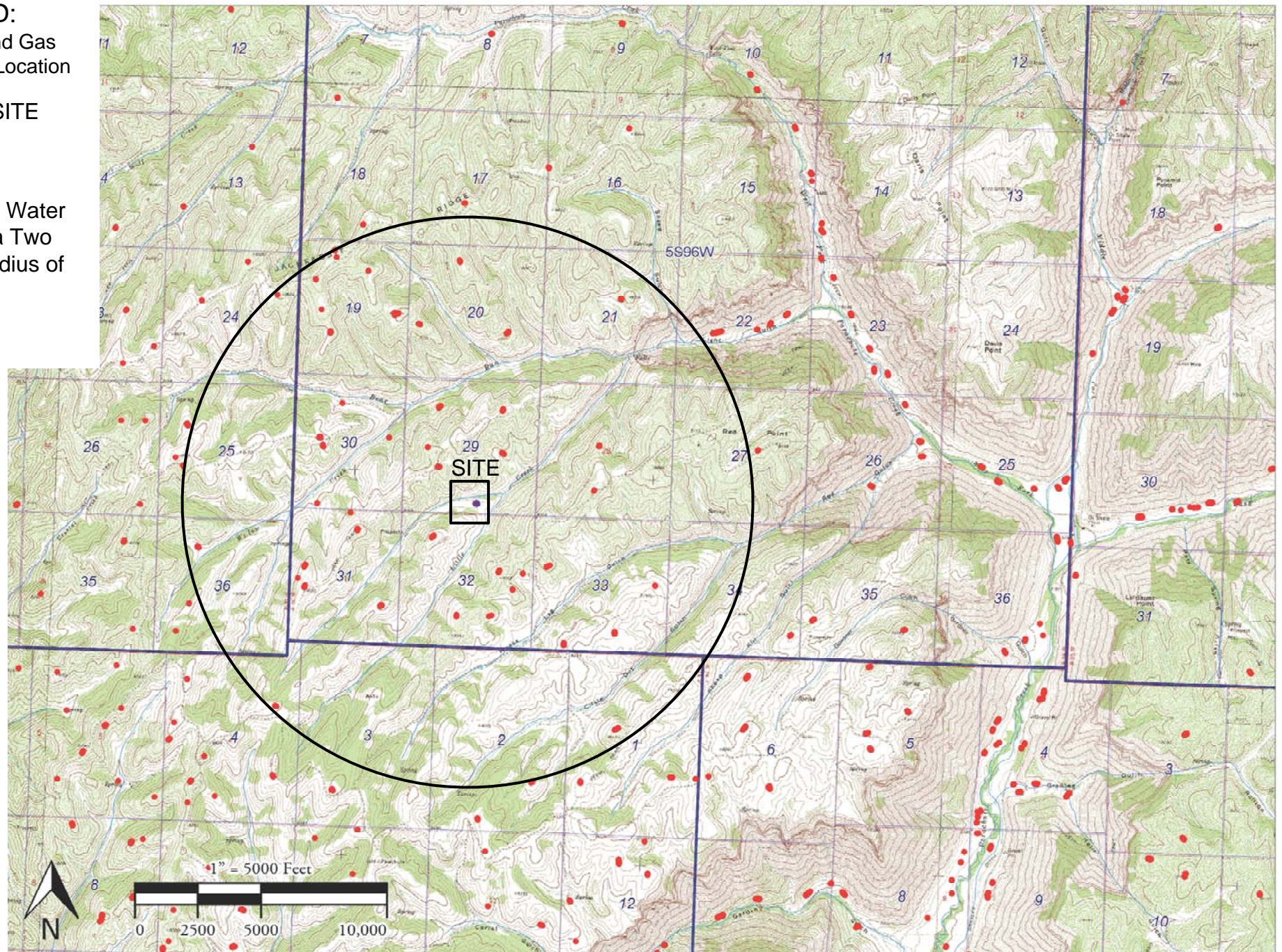
THIS PAGE LEFT BLANK FOR TWO-SIDED DUPLICATION.

LEGEND:

● Oil and Gas Well Location

□ SITE

Surface Water Within a Two Mile Radius of the Site



PROJECT NO: 014-1565

DRAWN BY: JWH

DATE: 11/4/2014

SURFACE WATER MAP

Linn O-29 Centralized E&P Waste Management Facility
SW ¼ SE ¼ 29 T5S R96W - Garfield County, Colorado

OLSSON
ASSOCIATES

4690 Table Mountain Drive #200
Golden, Colorado 80403
TEL 303.237.2072
FAX 303.237.2659

FIGURE

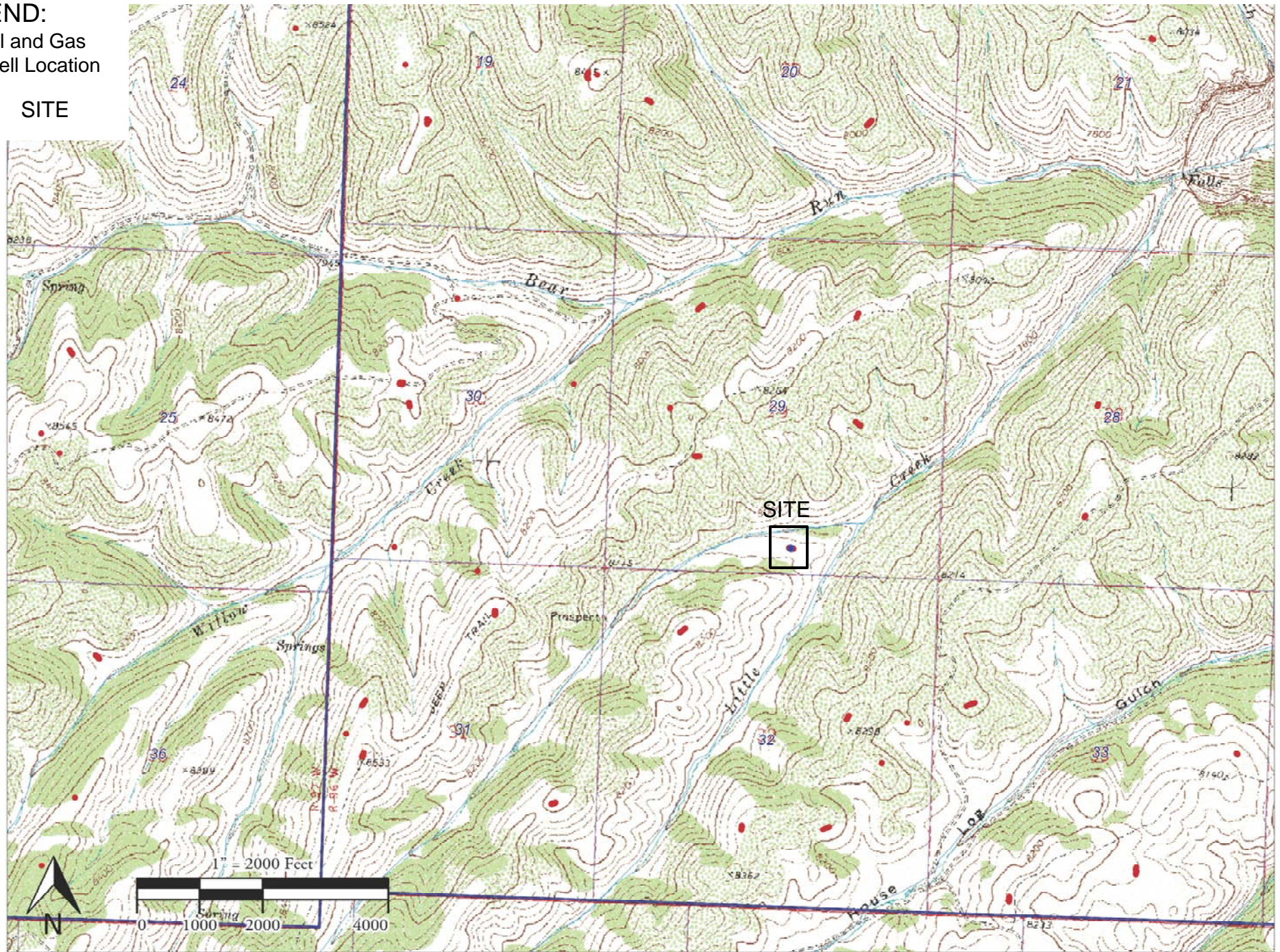
SW-1

THIS PAGE LEFT BLANK FOR TWO-SIDED DUPLICATION.

LEGEND:

● Oil and Gas Well Location

□ SITE



PROJECT NO: 014-1565

DRAWN BY: JWH

DATE: 11/4/2014

SITE LOCATION MAP

Linn O-29 Centralized E&P Waste Management Facility
SW ¼ SE ¼ 29 T5S R96W - Garfield County, Colorado

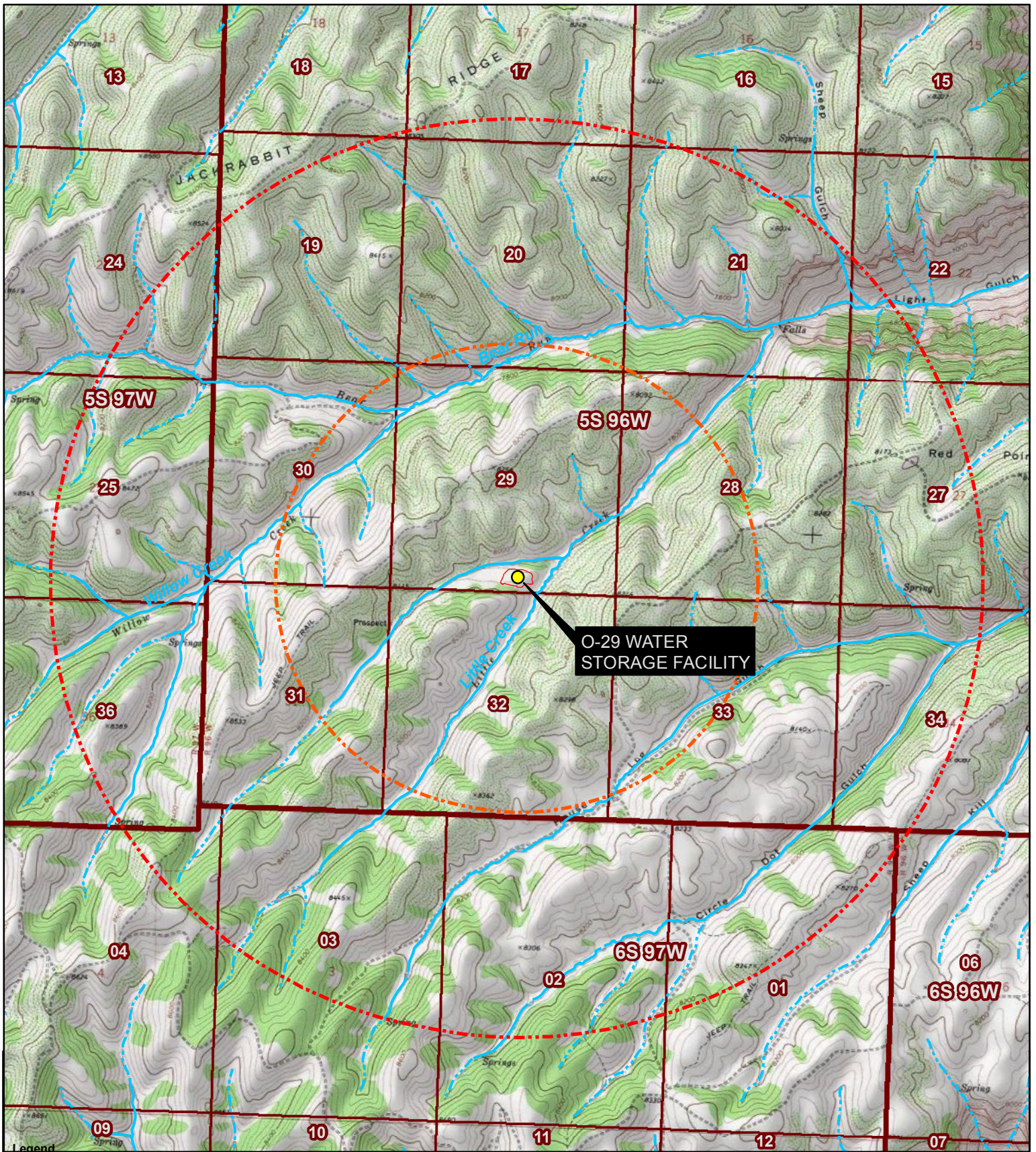
OLSSON
ASSOCIATES

4690 Table Mountain Drive #200
Golden, Colorado 80403
TEL 303.237.2072
FAX 303.237.2659

FIGURE

T-1

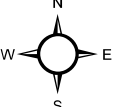

THIS PAGE LEFT BLANK FOR TWO-SIDED DUPLICATION.



<div><div><div><div></div><div></div><div></div><div></div><div></div><div></div><div></div><div></div><div></div><div></div></div><div><div></div><div></div><div></div><div></div><div></div><div></div><div></div><div></div><div></div><div></div></div></div><div><div>1 Mile Buffer</div><div>2 Mile Buffer</div><div>Perennial Stream</div><div>Intermittent Stream</div></div><div><div><div></div></div><div>O-29 WATER STORAGE FACILITY</div></div><div><div><div></div></div><div>O-29 Water Storage Facility Boundary</div></div></div>		<div><div><div></div><div></div><div></div><div></div><div></div><div></div><div></div><div></div><div></div><div></div></div><div><div>N</div><div>W</div><div>E</div><div>S</div></div></div>			
<div>PROJECT NO:</div> <div>014-1565</div>	<div>TOPOGRAPHY MAP</div>		<div><div><div><div></div><div></div><div></div><div></div><div></div><div></div><div></div><div></div><div></div><div></div></div><div><div></div><div></div><div></div><div></div><div></div><div></div><div></div><div></div><div></div><div></div></div></div><div><div>OLSSON</div><div>ASSOCIATES</div></div><div><div>760 HORIZON DR., SUITE 102 GRAND JUNCTION, CO 81506 TEL 970.263.7800 FAX 970.263.7456</div></div></div>		<div>FIGURE</div>
<div>DRAWN BY:</div> <div>JWH</div>	<div>LINN ENERGY O-29 WATER STORAGE FACILITY GARFIELD COUNTY, COLORADO</div>		<div>T-2</div>		
<div>DATE:</div> <div>11/11/2014</div>					

THIS PAGE LEFT BLANK FOR TWO-SIDED DUPLICATION.



Legend — Perennial Stream ● O-29 WATER STORAGE FACILITY O-29 Water Storage Facility Boundary 1000 Foot Buffer			
PROJECT NO:	014-1565		
DRAWN BY:	JWH		
DATE:	11/11/2014		
1000 FOOT VICINITY MAP LINN ENERGY O-29 WATER STORAGE FACILITY GARFIELD COUNTY, COLORADO		760 HORIZON DR., SUITE 102 GRAND JUNCTION, CO 81506 TEL 970.263.7800 FAX 970.263.7456	FIGURE V-1

THIS PAGE LEFT BLANK FOR TWO-SIDED DUPLICATION.