



**Premier Directional Drilling**  
12941 North Freeway Suite 400  
Houston TX 77060  
281-673-4000

**Troudt 35C-33HZ**  
**Scale 5":100' - MD**  
**4/29/2015 5:13 PM**

**Oper. Company:** Anadarko Petroleum Corporation  
**Well:** Troudt 35C-33HZ  
**Field:** DJ  
**Rig:** H&P311  
**Well ID:**  
**Job Number:** R15191

**State:** CO  
**County:** WELD  
**Country:** US  
**Location:**  
**Start Date:** 04/28/2015 00:00:00  
**End Date:** 04/29/2015 16:56:29

**Latitude:** 40.088400  
**Longitude:** -104.899966

**Elev KB:** 5061.5  
**Elev DF:** 24.5  
**Elev GL:** 5037

**Notes:** Premier Directional Drilling Datum: NAD 1927 Projection: Texas Central 4203 Total Correction: Grid Convergence:

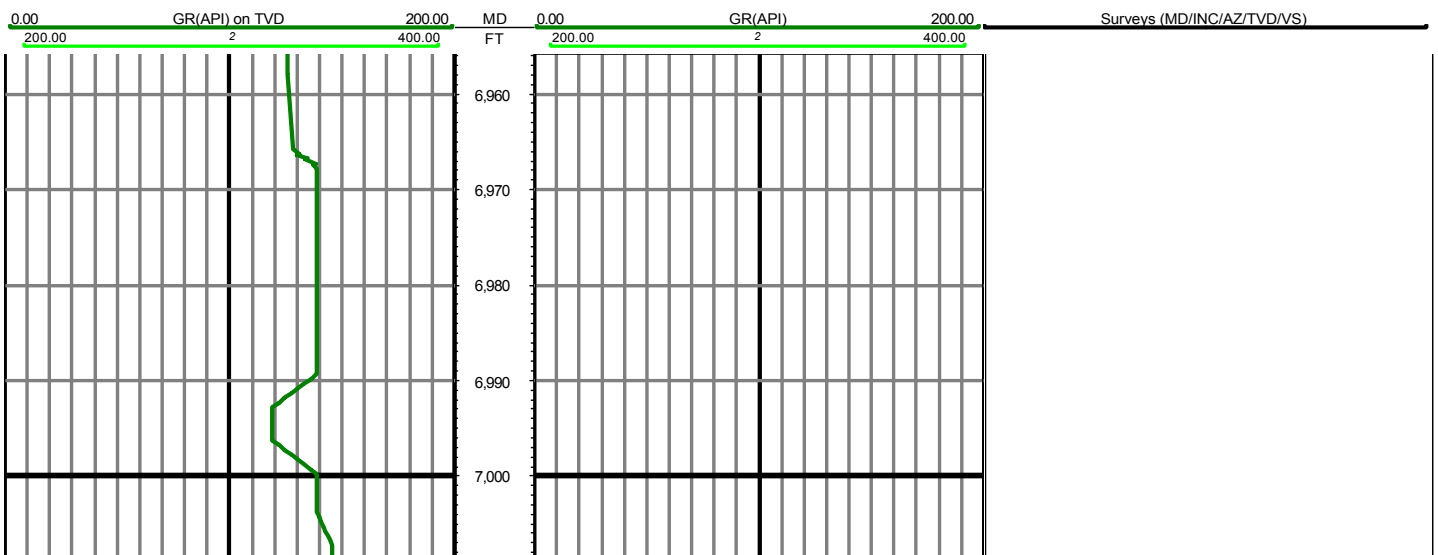
**Operator 1:** Mike Gunther

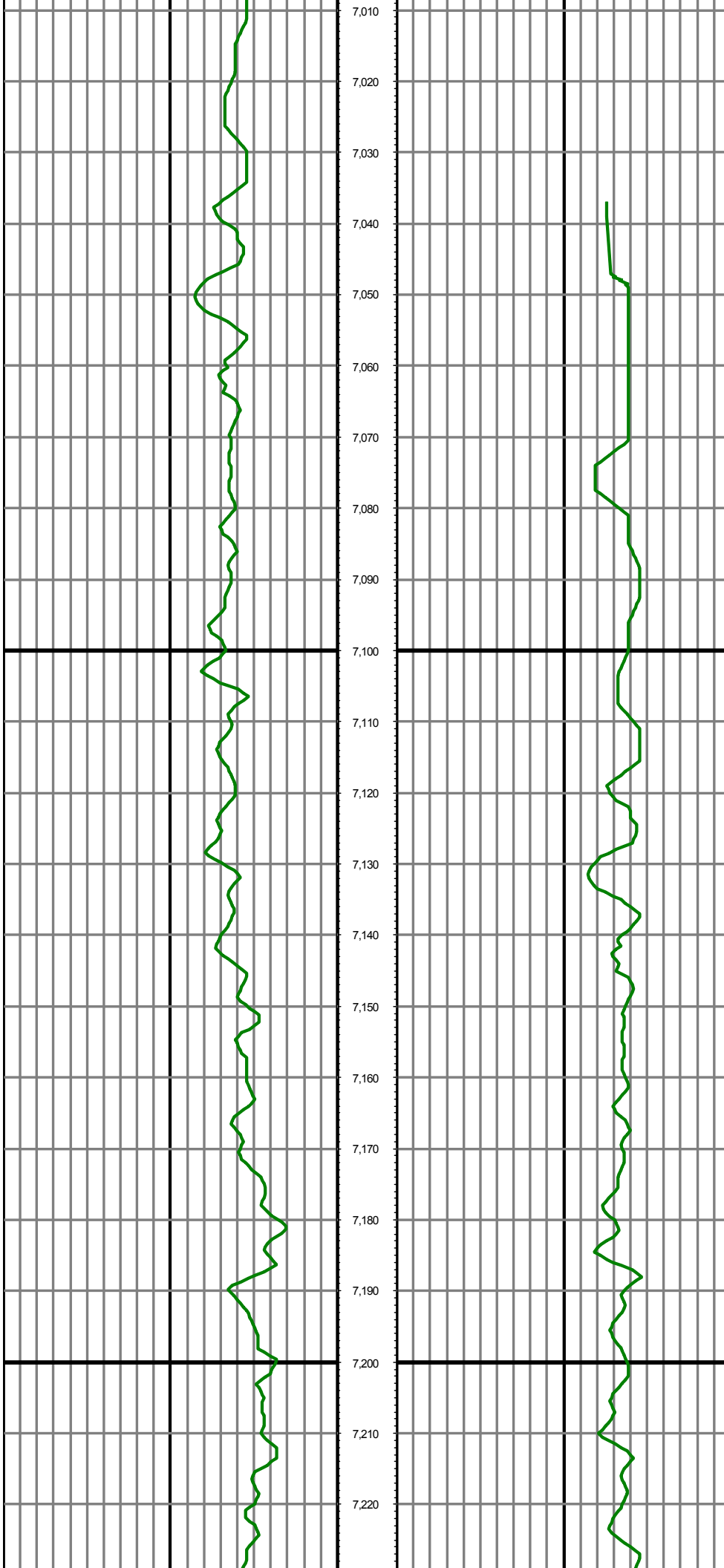
**Operator 2:** Chris Kurz

**Notes:** Smoothing: 7Gap:10 Survey Tool Type: Mud Pulse Calculation Method: Minimum Curvature

Tool Run Data	Run #1	Run #2	Run #3	Run #4	Run #5
Tool S/N	163				
Bit Size	8.5				
Cal Factor	6.62				
Gamma Offset	54.00				
Resistivity Offset	0.00				
Start Depth	7170.00				
StartDate	4/29/2015				
StartTime	4:56 PM				
EndDepth	12717.00				
EndDate	4/29/2015				
EndTime	4:57 PM				
Mud Type	WBM				
Temperature	212				
Hole Data			Casing Data		
Size	From	To	Size	From	To
12.25	0.00	1149.00	9 5/8	0.00	1149.00
8.5	1149.00	12717.00	5.5	1149.00	12717.00

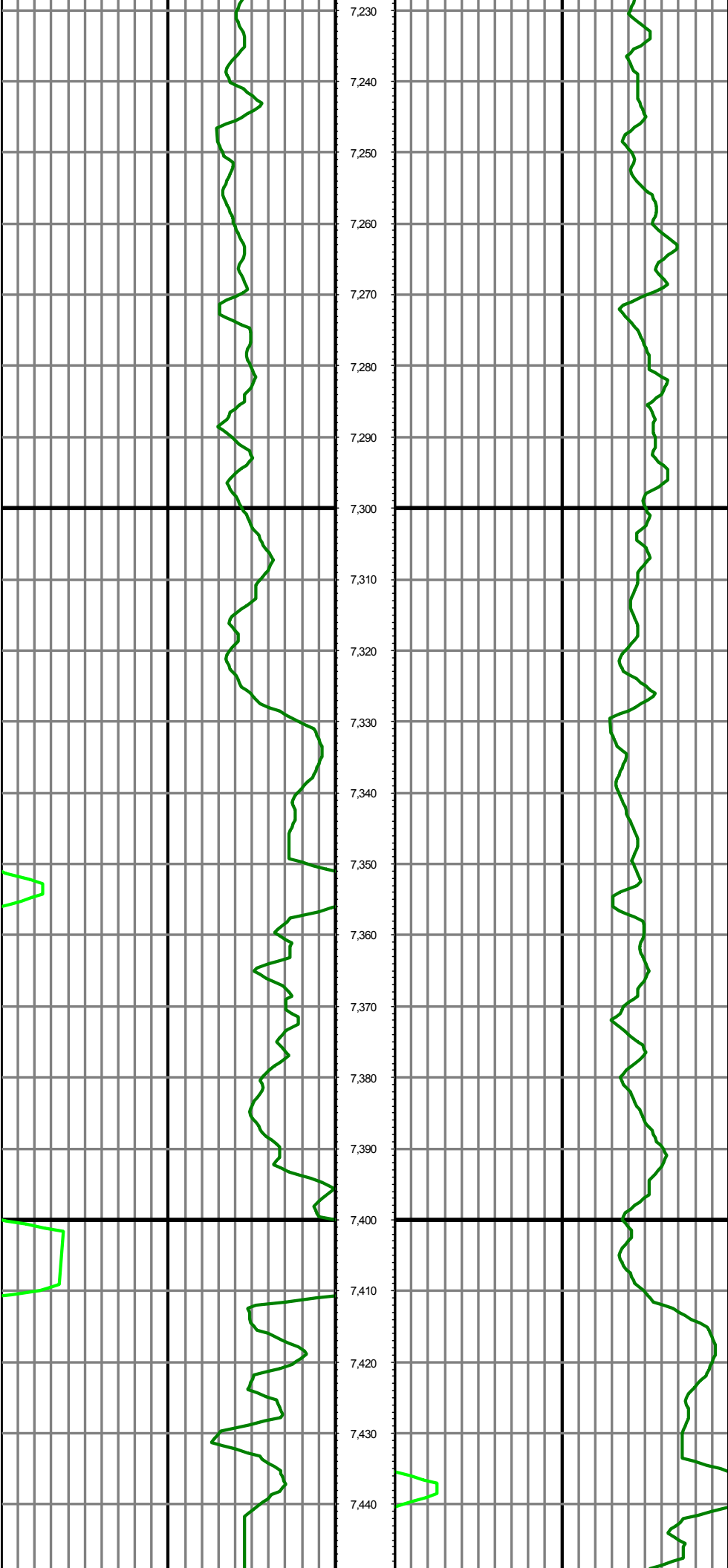
*All interpretations are opinions based on inferences from electrical or other measurements and we cannot and do not guarantee the accuracy or correctness of any interpretation, and we shall not except in the case of gross or willful negligence on our part, be liable or responsible for any loss, cost damages or expenses incurred or sustained by anyone resulting from an interpretation made by any of our officers, agents, or employees.*





MD: 7042.00 INC: 2.30 AZ: 344.60 TVD: 6960.82 VS: -707.82

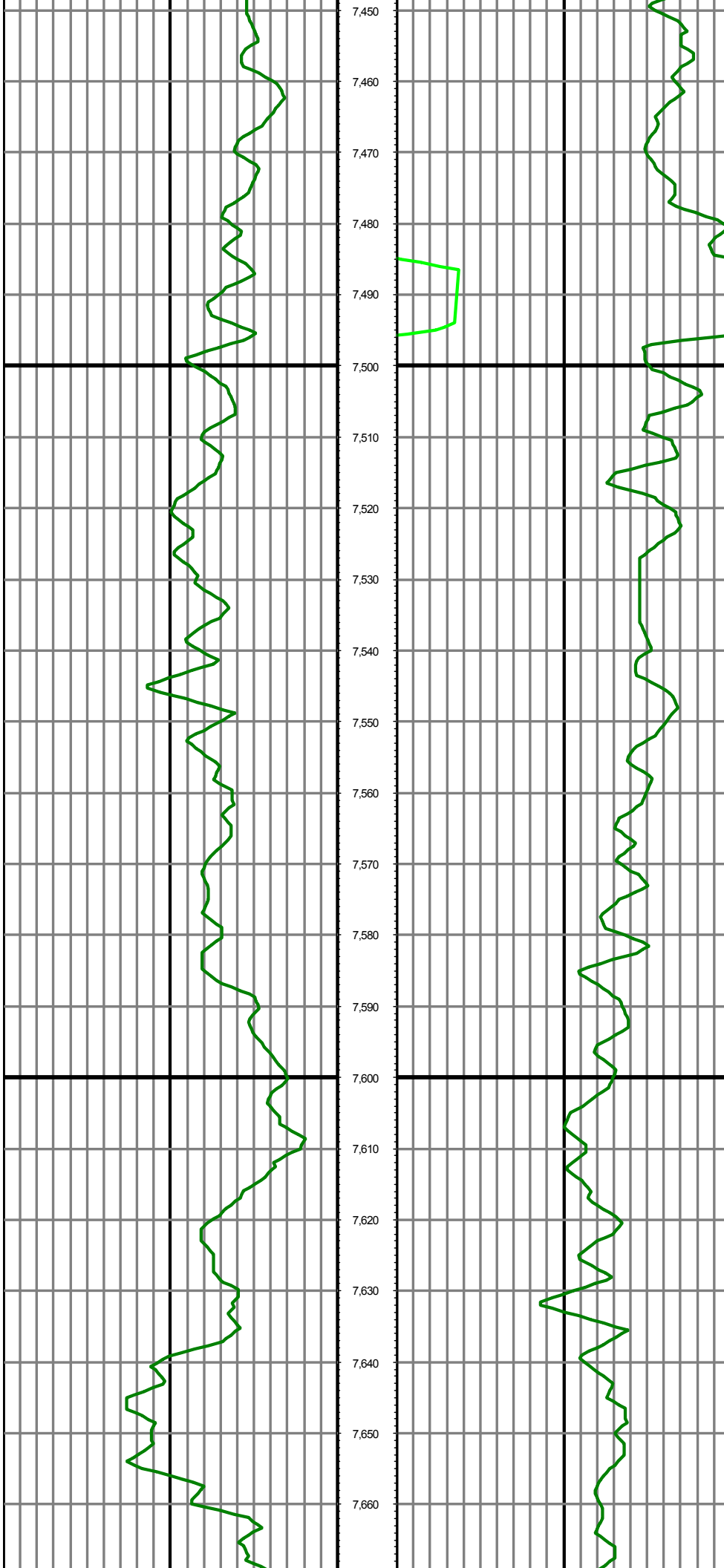
MD: 7136.00 INC: 2.10 AZ: 335.80 TVD: 7054.75 VS: -707.99



MD: 7231.00 INC: 9.00 AZ: 7.40 TVD: 7149.26 VS: -695.02 7,231.00

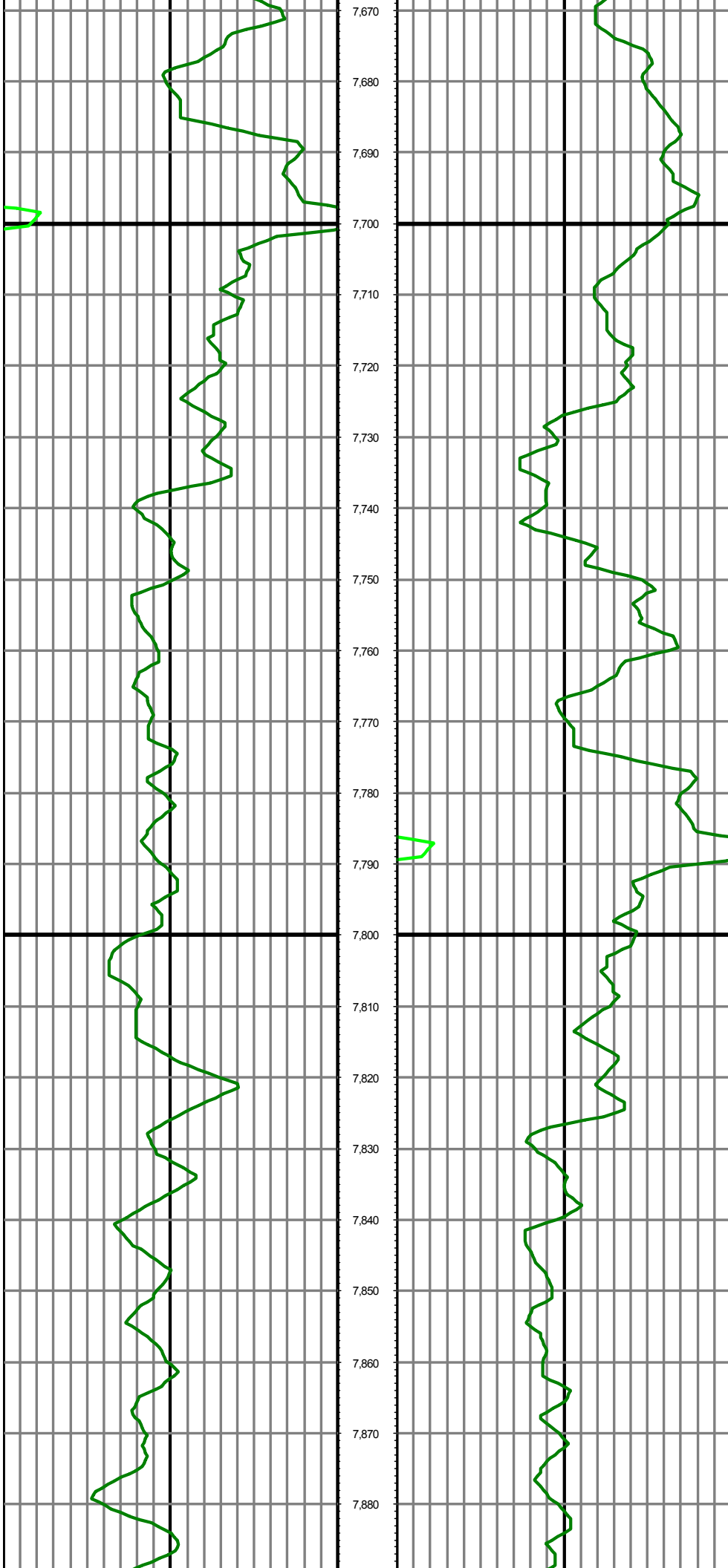
MD: 7326.00 INC: 19.00 AZ: 3.20 TVD: 7241.32 VS: -672.68 7,326.00

MD: 7420.00 INC: 26.70 AZ: 2.20 TVD: 7327.88 VS: -635.12 7,420.00



MD: 7515.00 INC: 34.70 AZ: 358.60 TVD: 7409.51 VS: -5875.00

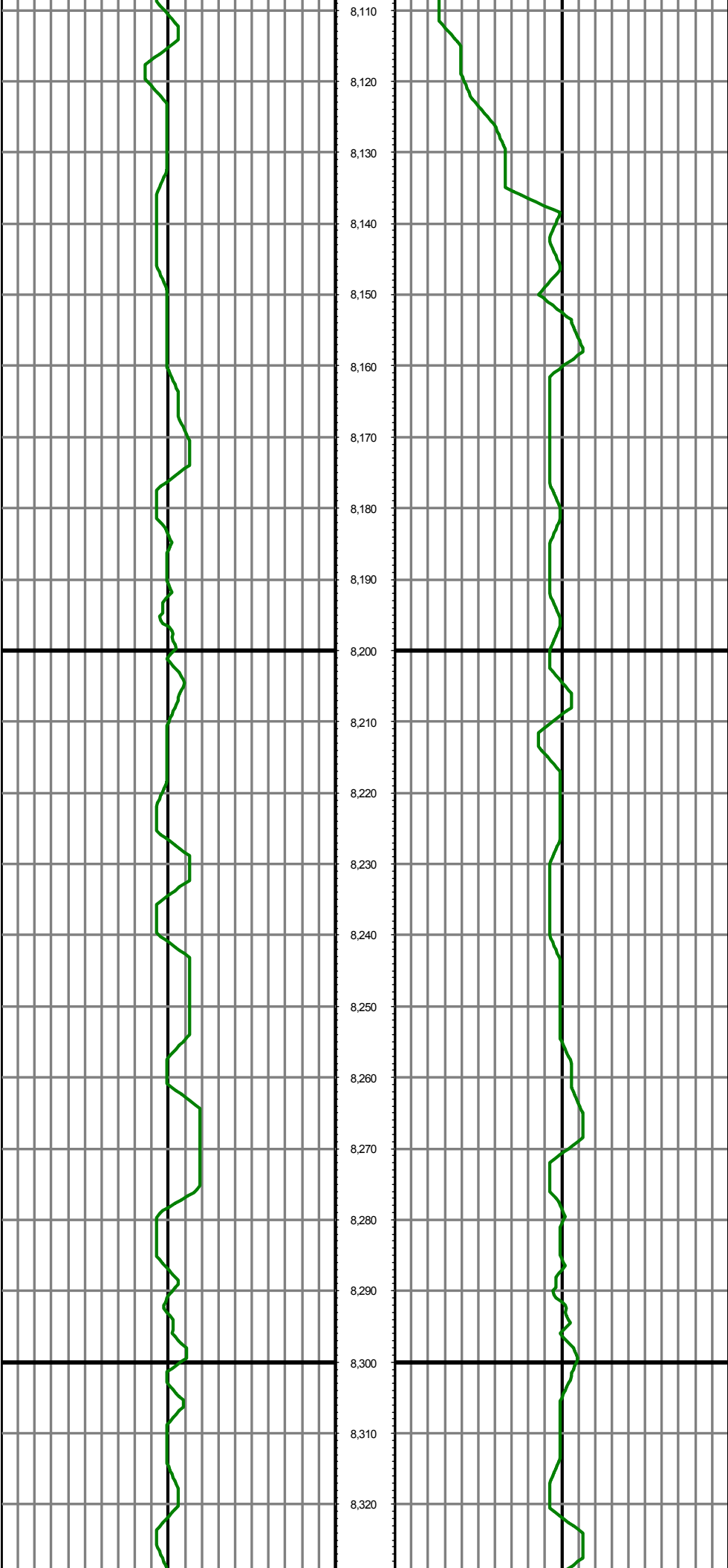
MD: 7610.00 INC: 41.30 AZ: 351.60 TVD: 7484.36 VS: -5235.00



MD: 7704.00 INC: 47.90 AZ: 355.50 TVD: 7551.27 VS: -463703.00

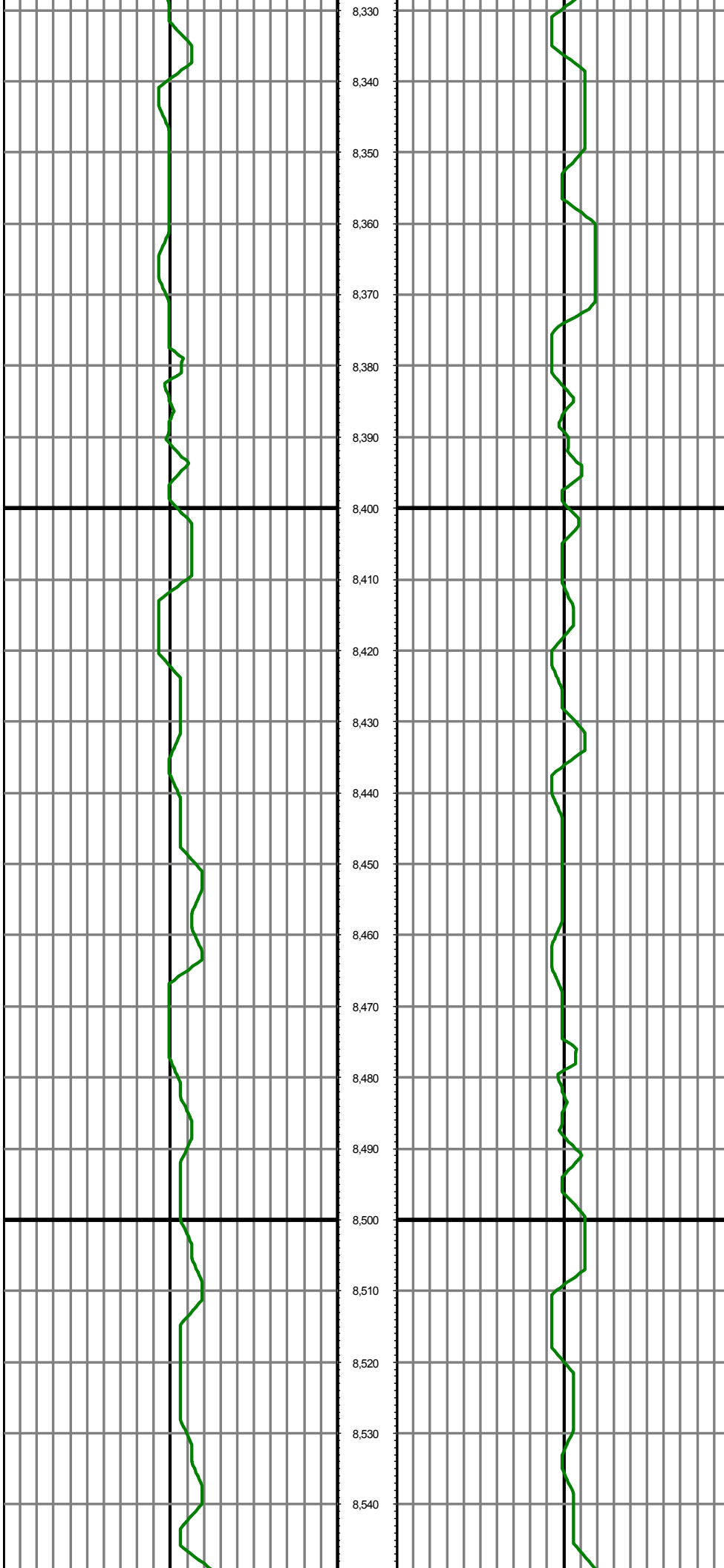
MD: 7799.00 INC: 57.40 AZ: 1.80 TVD: 7608.87 VS: -3887199.00





MD: 8177.00 INC: 89.20 AZ: 0.10 TVD: 7703.30 VS: -27.53 8,177.00

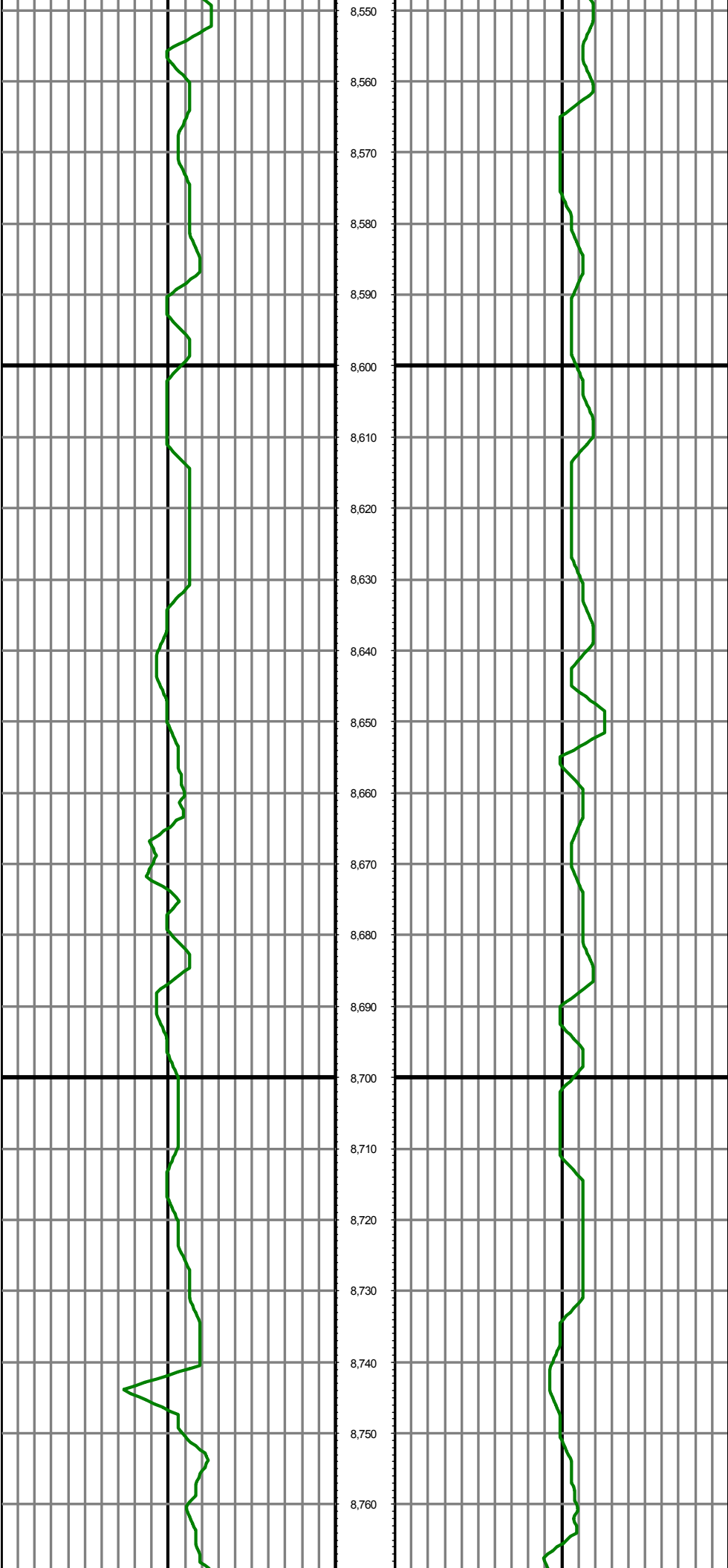
MD: 8272.00 INC: 88.00 AZ: 358.30 TVD: 7705.62 VS: 678.172.00



MD: 8367.00 INC: 90.80 AZ: 357.90 TVD: 7706.62 VS: 168.297.00

MD: 8461.00 INC: 91.10 AZ: 359.30 TVD: 7705.06 VS: 258.441.00

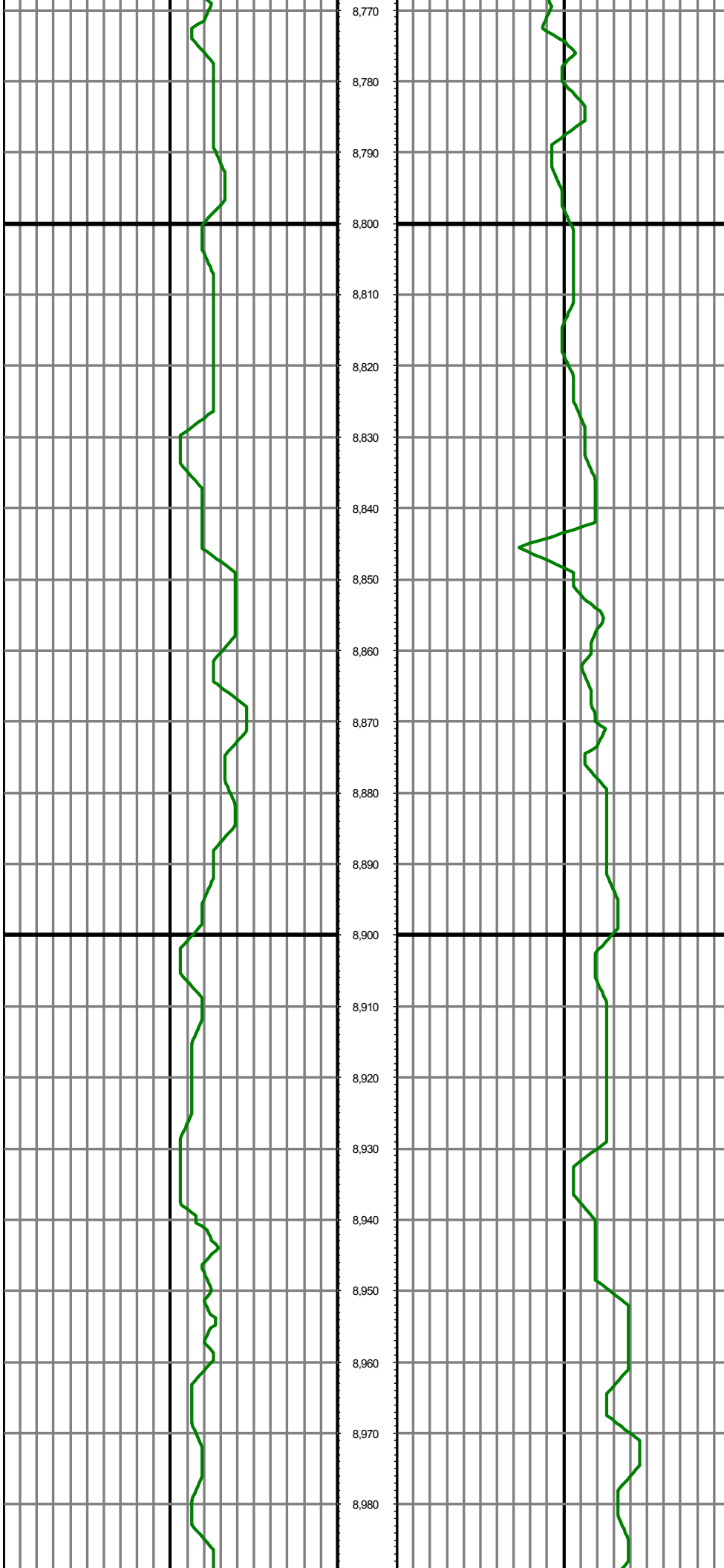




MD: 8556.00 INC: 89.60 AZ: 359.70 TVD: 7704.48 VS: 358.556.00

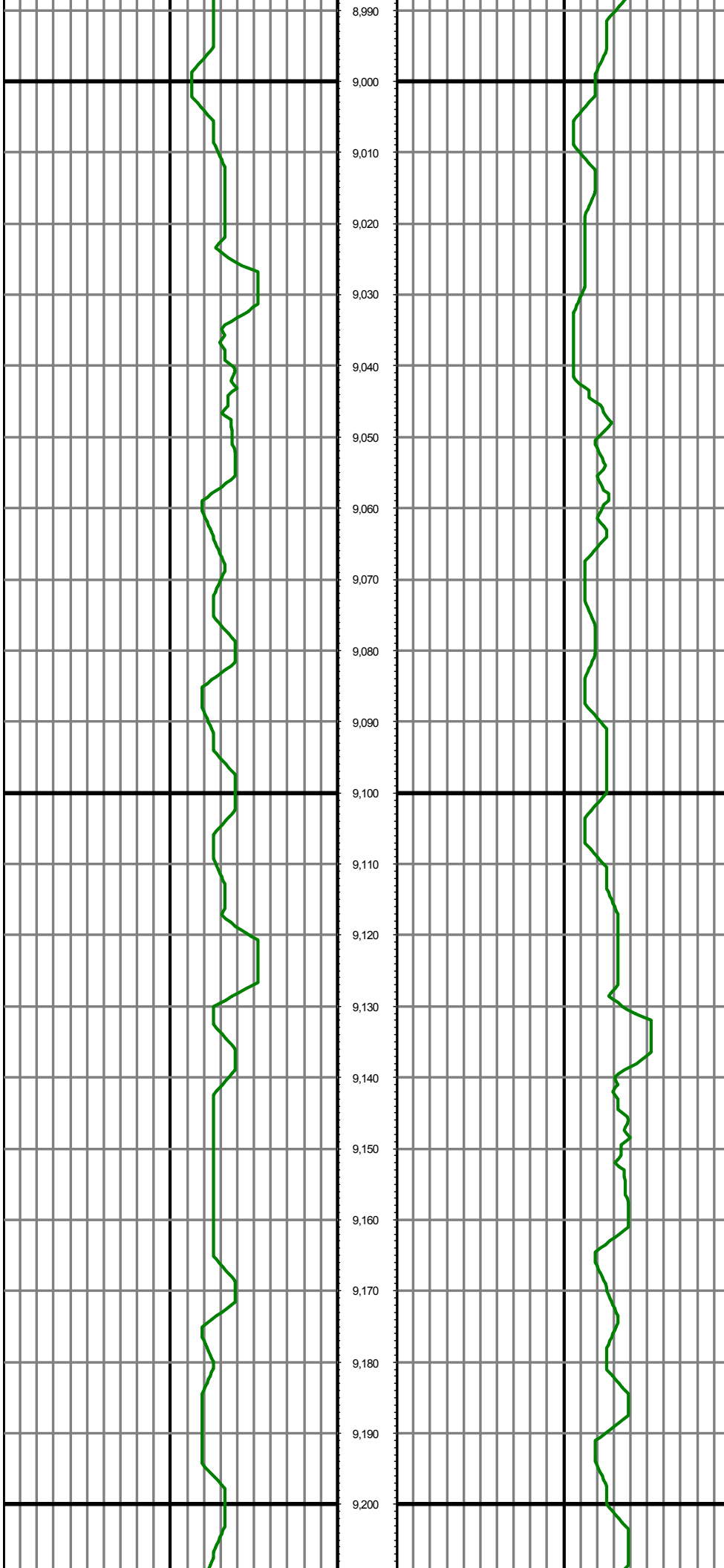
MD: 8651.00 INC: 89.40 AZ: 358.30 TVD: 7705.31 VS: 448.651.00

MD: 8745.00 INC: 89.90 AZ: 357.20 TVD: 7705.88 VS: 548.745.00



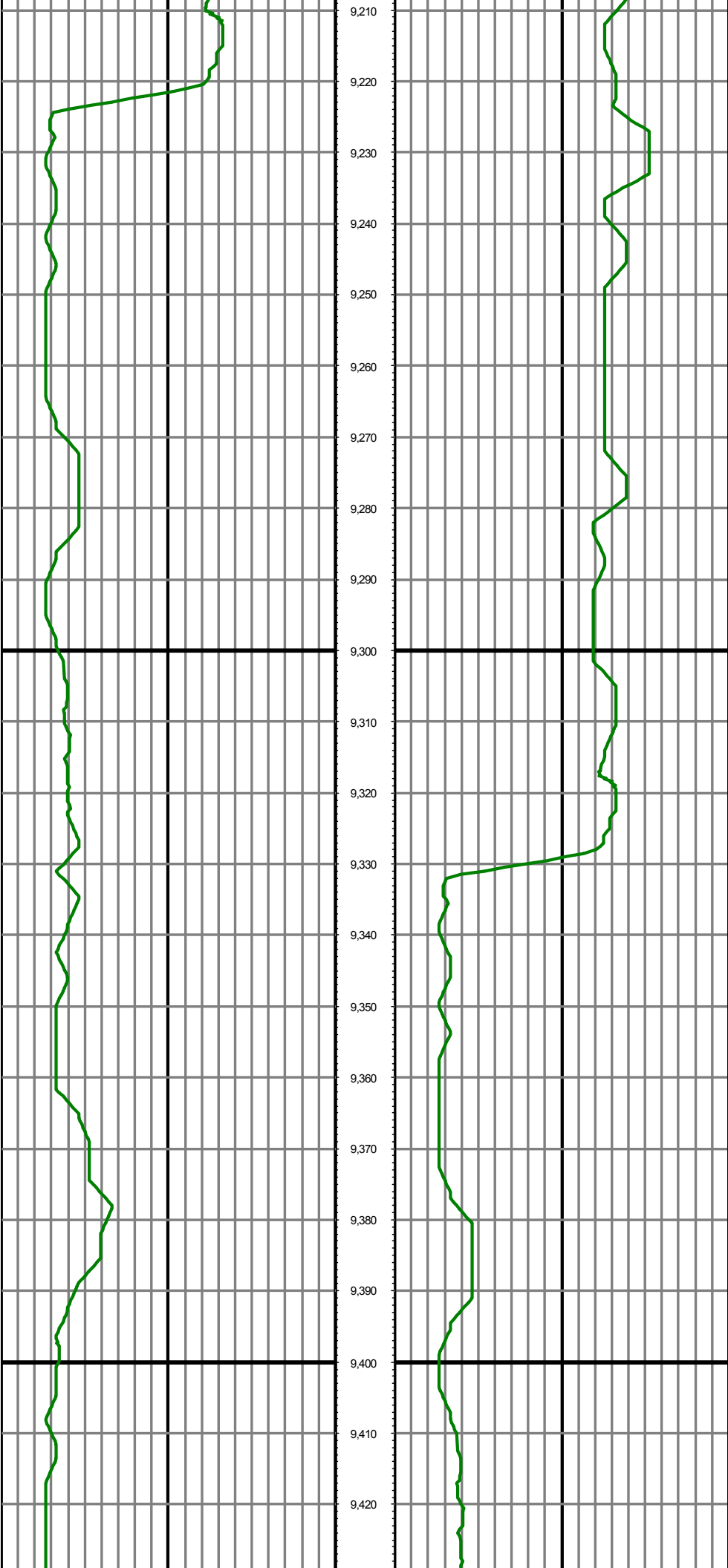
MD: 8840.00 INC: 89.00 AZ: 359.30 TVD: 7706.80 VS: 634.940.00

MD: 8934.00 INC: 88.70 AZ: 1.50 TVD: 7708.68 VS: 728.8834.00



MD: 9029.00 INC: 89.00 AZ: 0.40 TVD: 7710.59 VS: 823.86 9029.00

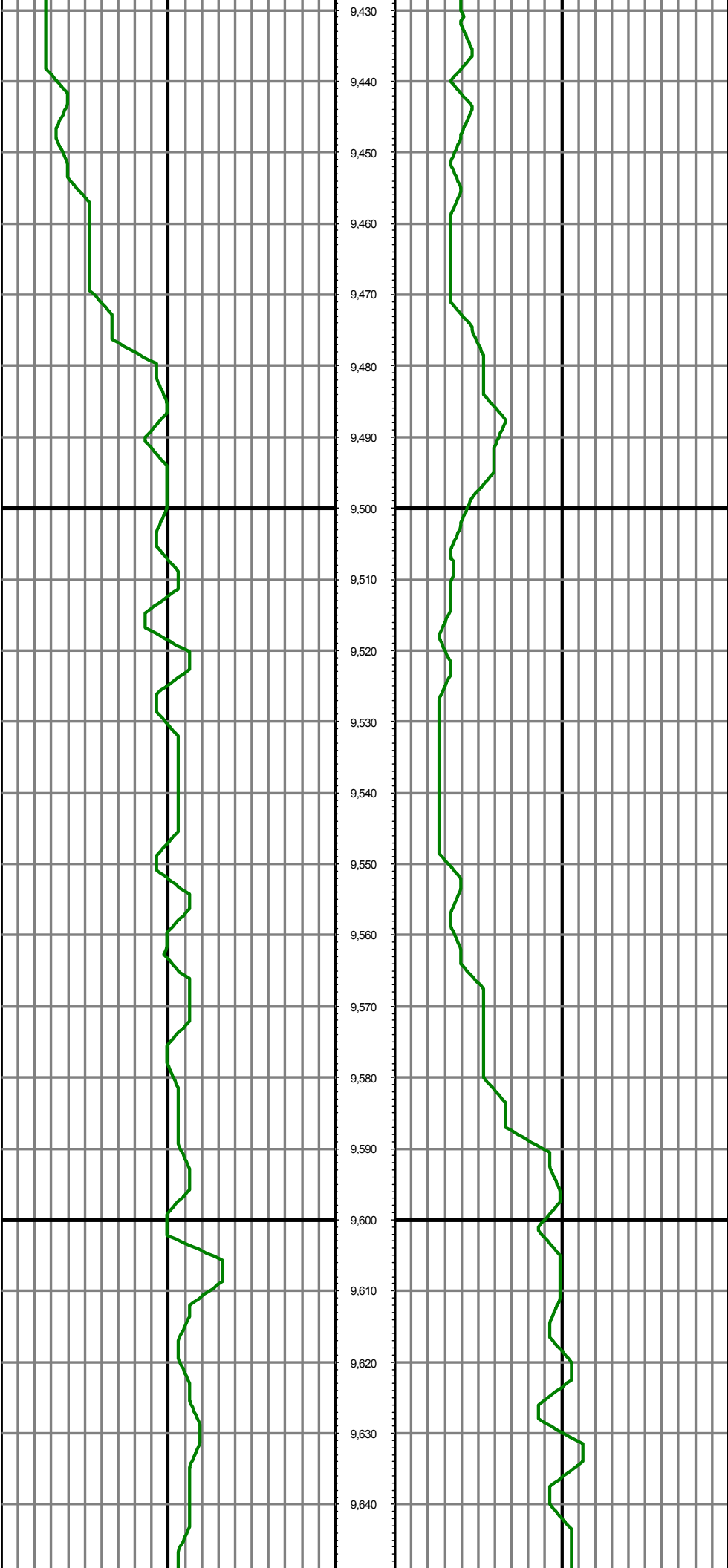
MD: 9123.00 INC: 90.30 AZ: 1.50 TVD: 7711.16 VS: 917.85 9123.00



MD: 9218.00 INC: 91.10 AZ: 2.90 TVD: 7710.00 VS: 10129.00

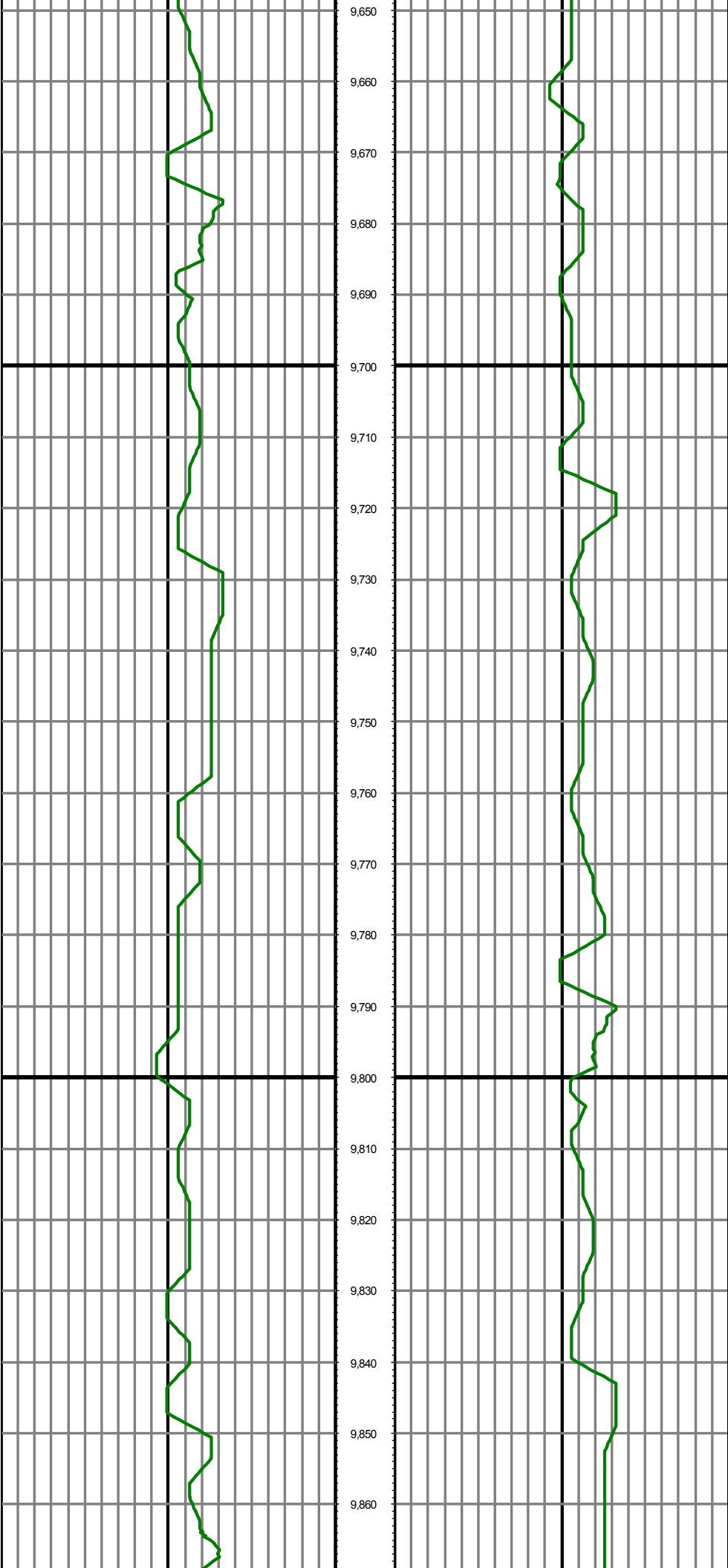
MD: 9312.00 INC: 91.70 AZ: 2.50 TVD: 7707.71 VS: 11069.00

MD: 9407.00 INC: 90.60 AZ: 2.90 TVD: 7705.80 VS: 12019.00



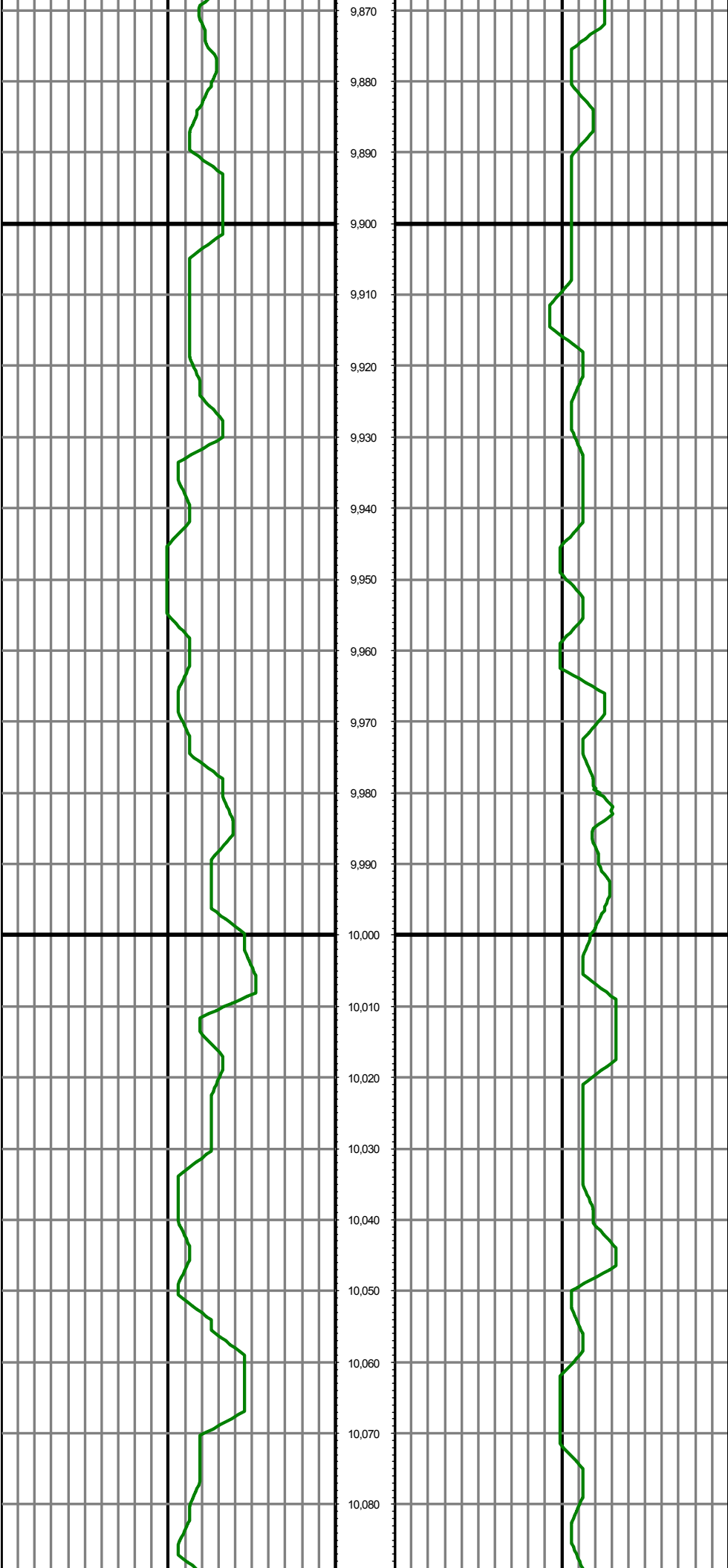
MD: 9502.00 INC: 89.20 AZ: 2.90 TVD: 7705.97 VS: 12965.00

MD: 9596.00 INC: 88.50 AZ: 1.80 TVD: 7707.85 VS: 13905.00



MD: 9691.00 INC: 88.90 AZ: 1.50 TVD: 7710.01 VS: 14859.691.00

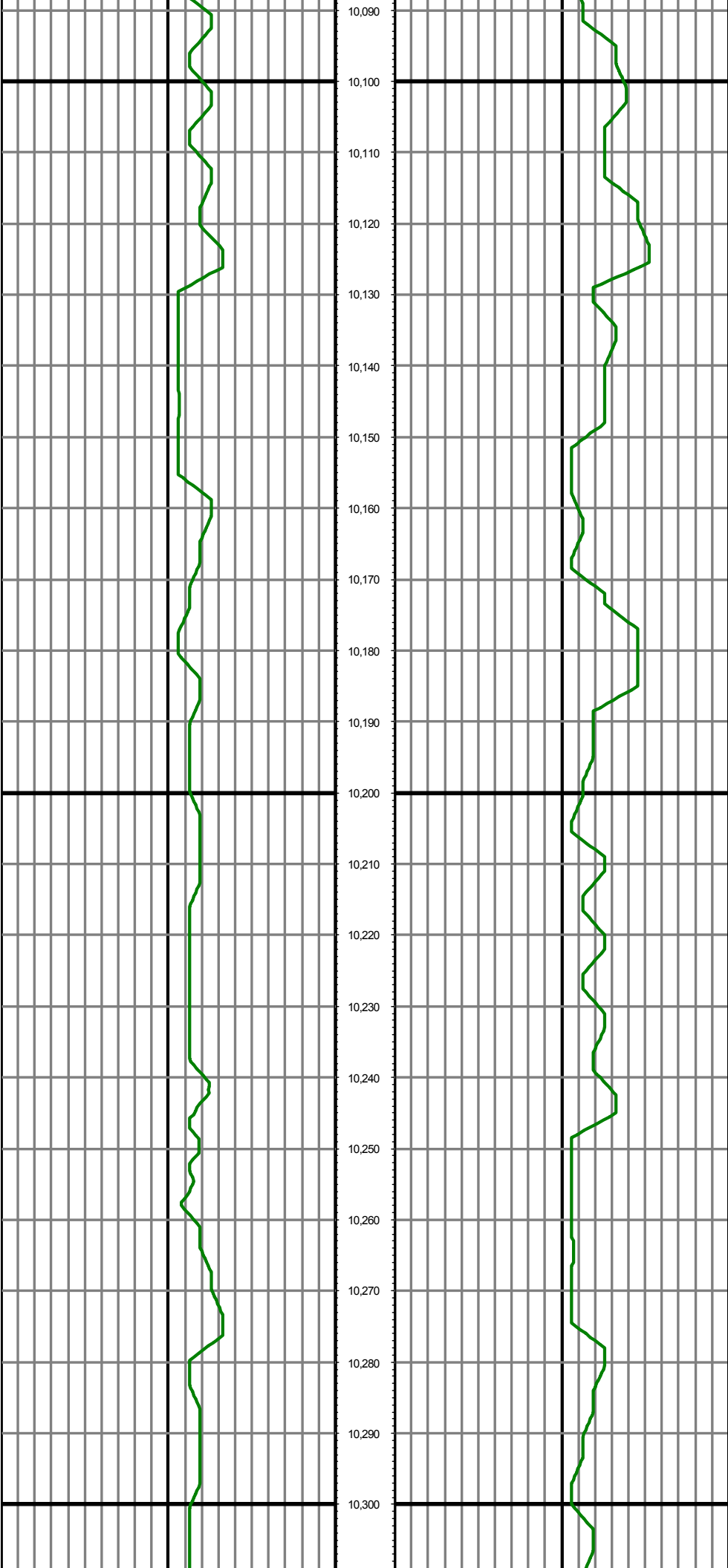
MD: 9785.00 INC: 88.90 AZ: 0.40 TVD: 7711.81 VS: 15799.785.00



MD: 9880.00 INC: 90.60 AZ: 1.80 TVD: 7712.23 VS: 16749.50

MD: 9974.00 INC: 91.10 AZ: 0.80 TVD: 7710.83 VS: 17689.97

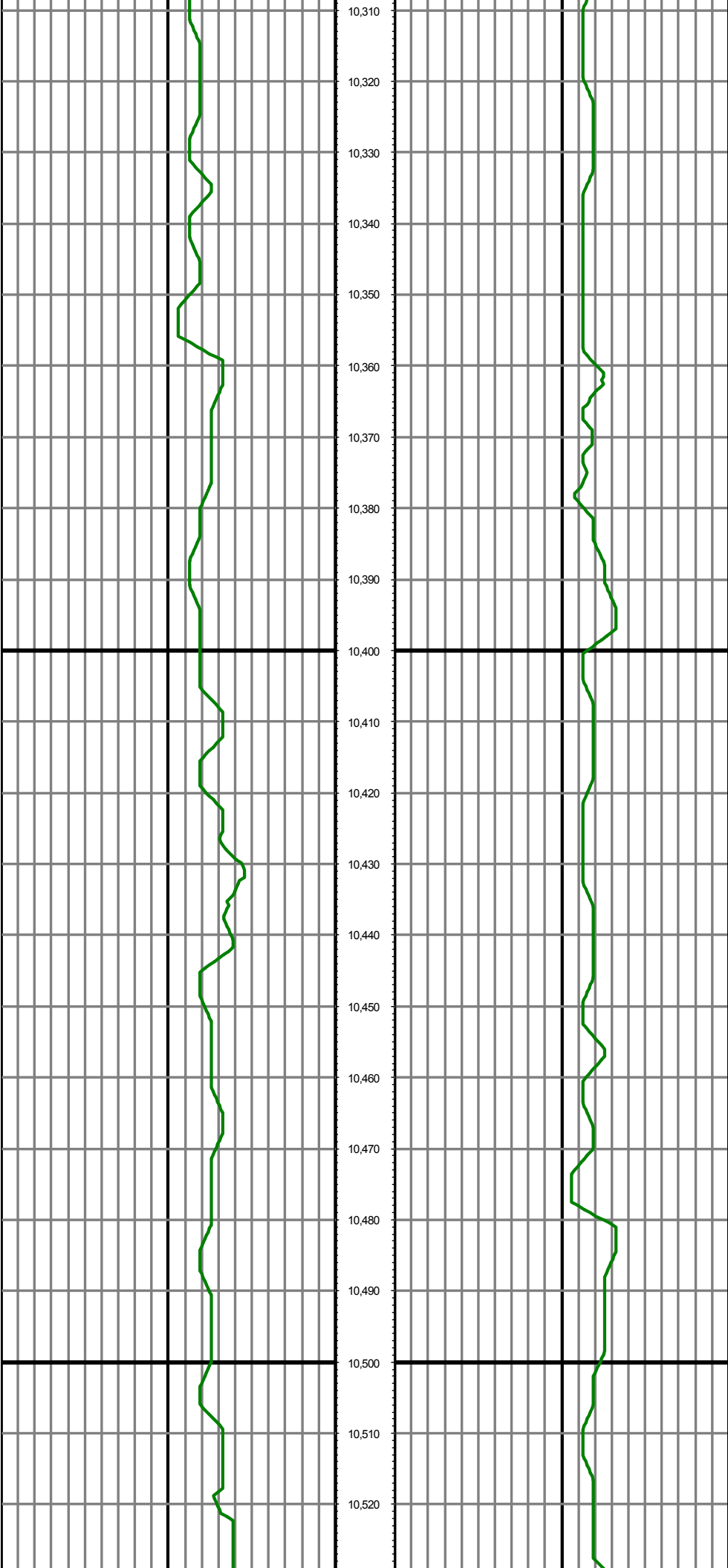
MD: 10069.00 INC: 89.00 AZ: 0.10 TVD: 7710.75 VS: 18000.00



MD: 10163.00 INC: 89.70 AZ: 0.80 TVD: 7711.82 VS: 1950.423.00

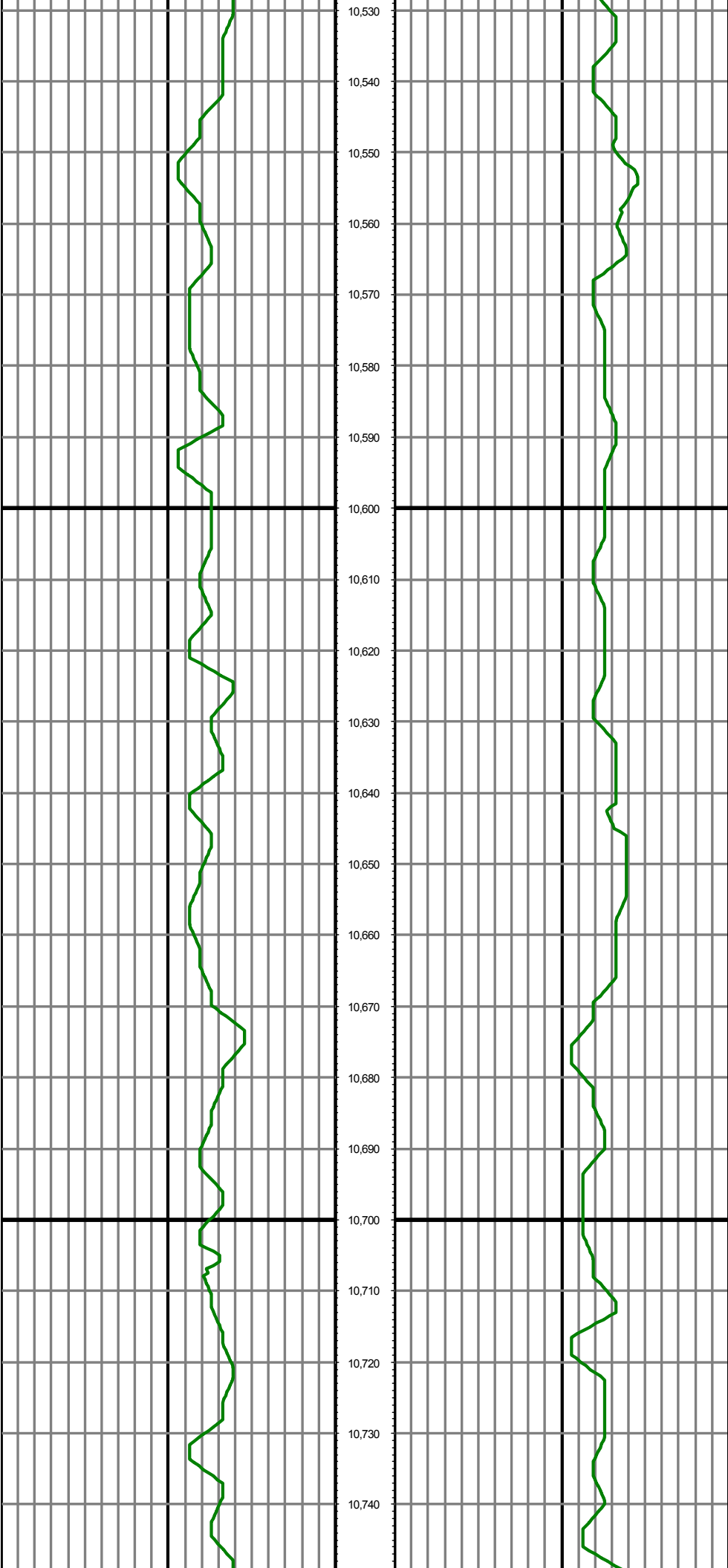
MD: 10258.00 INC: 90.40 AZ: 0.80 TVD: 7711.73 VS: 2050.258.00





MD: 10352.00 INC: 91.00 AZ: 0.10 TVD: 7710.58 VS: 2146.352.00

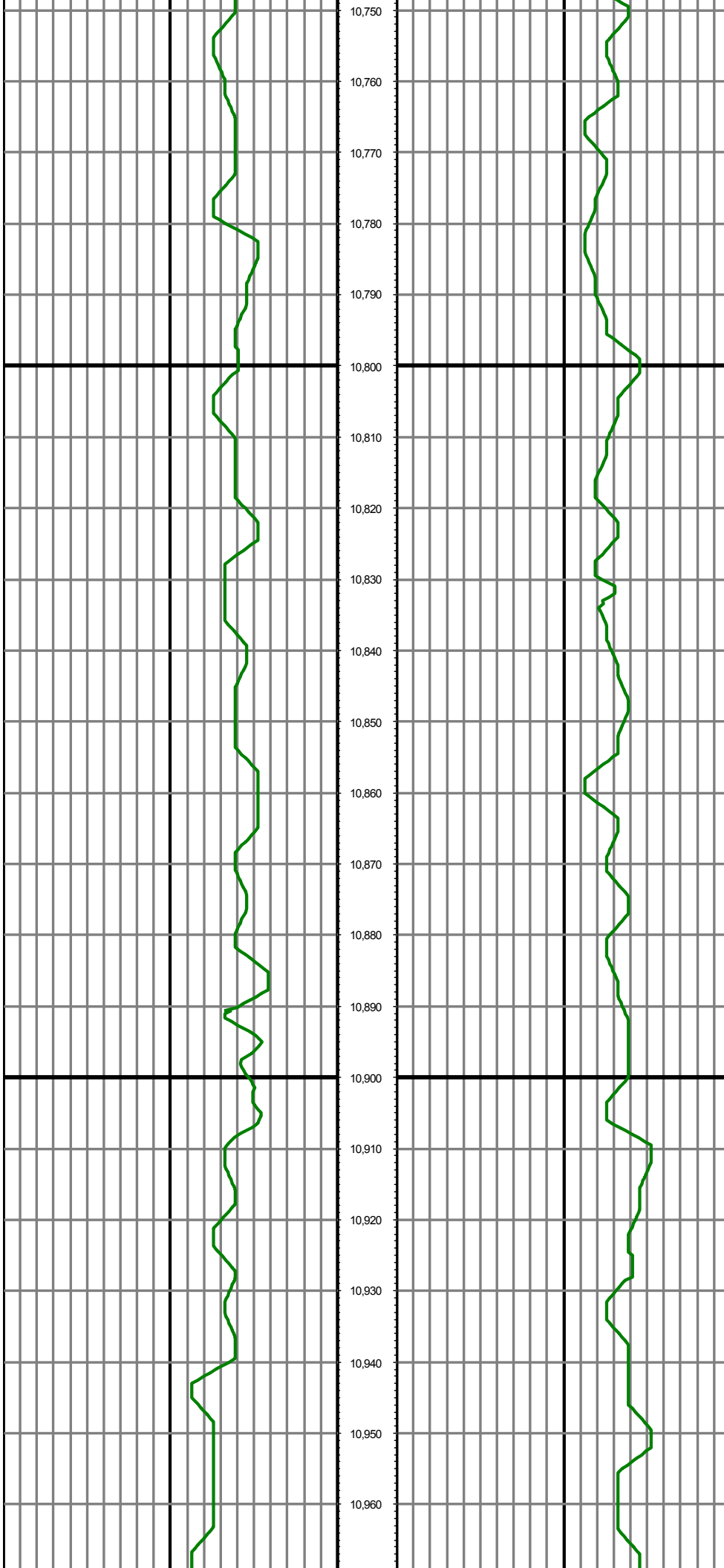
MD: 10447.00 INC: 89.90 AZ: 1.50 TVD: 7709.84 VS: 2240.447.00



MD: 10542.00 INC: 90.40 AZ: 1.10 TVD: 7709.59 VS: 2336.42 0.00

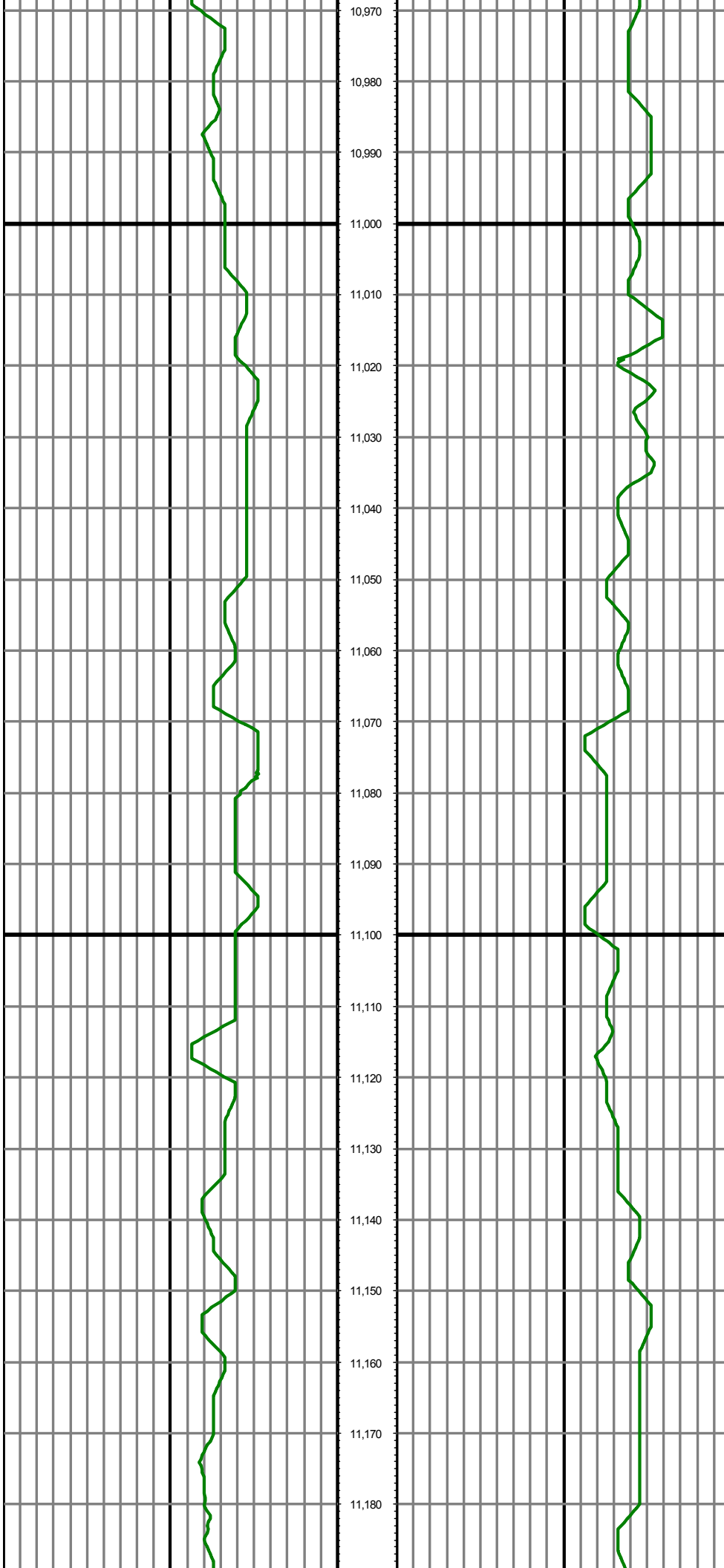
MD: 10636.00 INC: 89.40 AZ: 2.50 TVD: 7709.75 VS: 2430.63 0.00

MD: 10730.00 INC: 89.70 AZ: 1.50 TVD: 7710.49 VS: 2520.33 0.00



MD: 10825.00 INC: 90.60 AZ: 2.20 TVD: 7710.24 VS: 2619.825.00

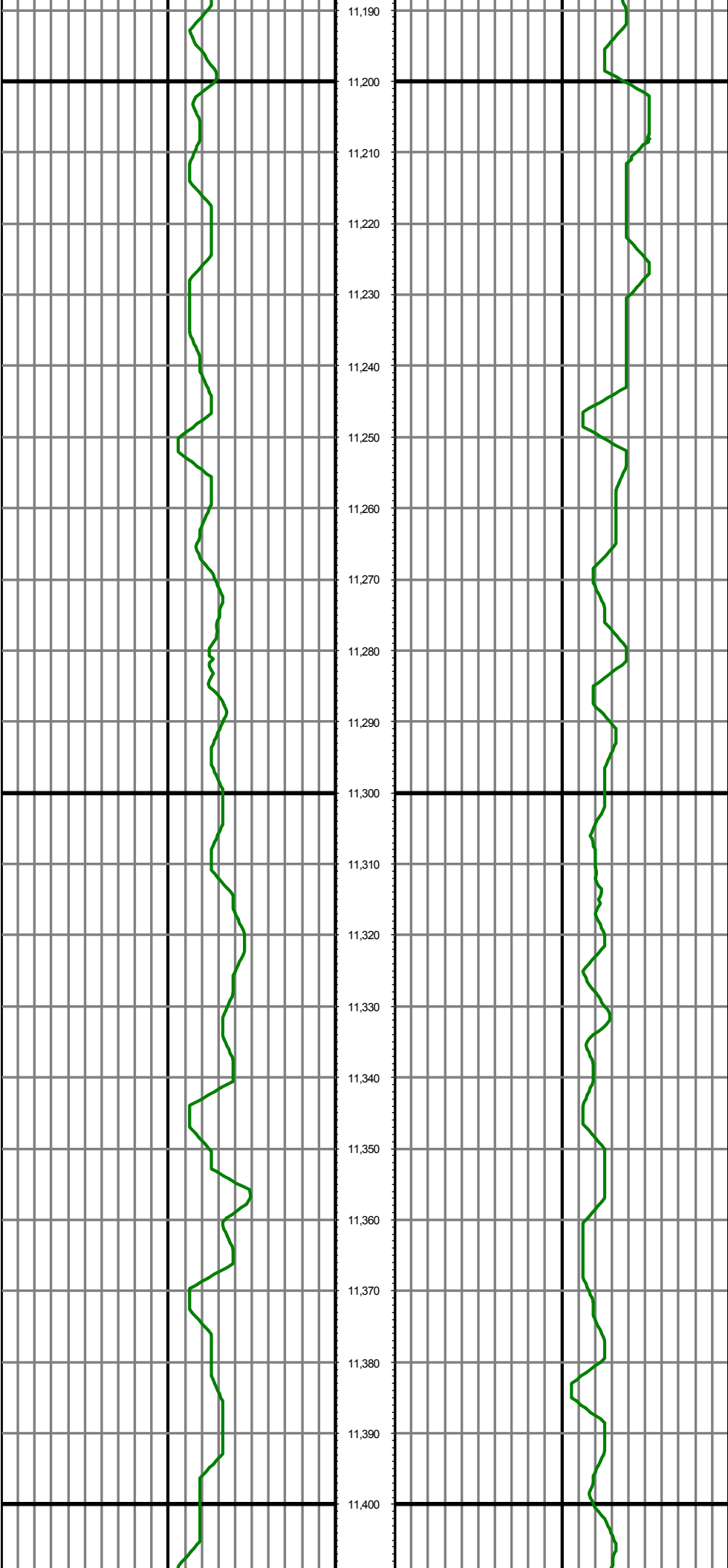
MD: 10919.00 INC: 90.80 AZ: 0.80 TVD: 7709.10 VS: 2719.919.00



10,970  
10,980  
10,990  
11,000  
11,010  
11,020  
11,030  
11,040  
11,050  
11,060  
11,070  
11,080  
11,090  
11,100  
11,110  
11,120  
11,130  
11,140  
11,150  
11,160  
11,170  
11,180

MD: 11014.00 INC: 91.70 AZ: 359.30 TVD: 7707.02 VS: 2308.250

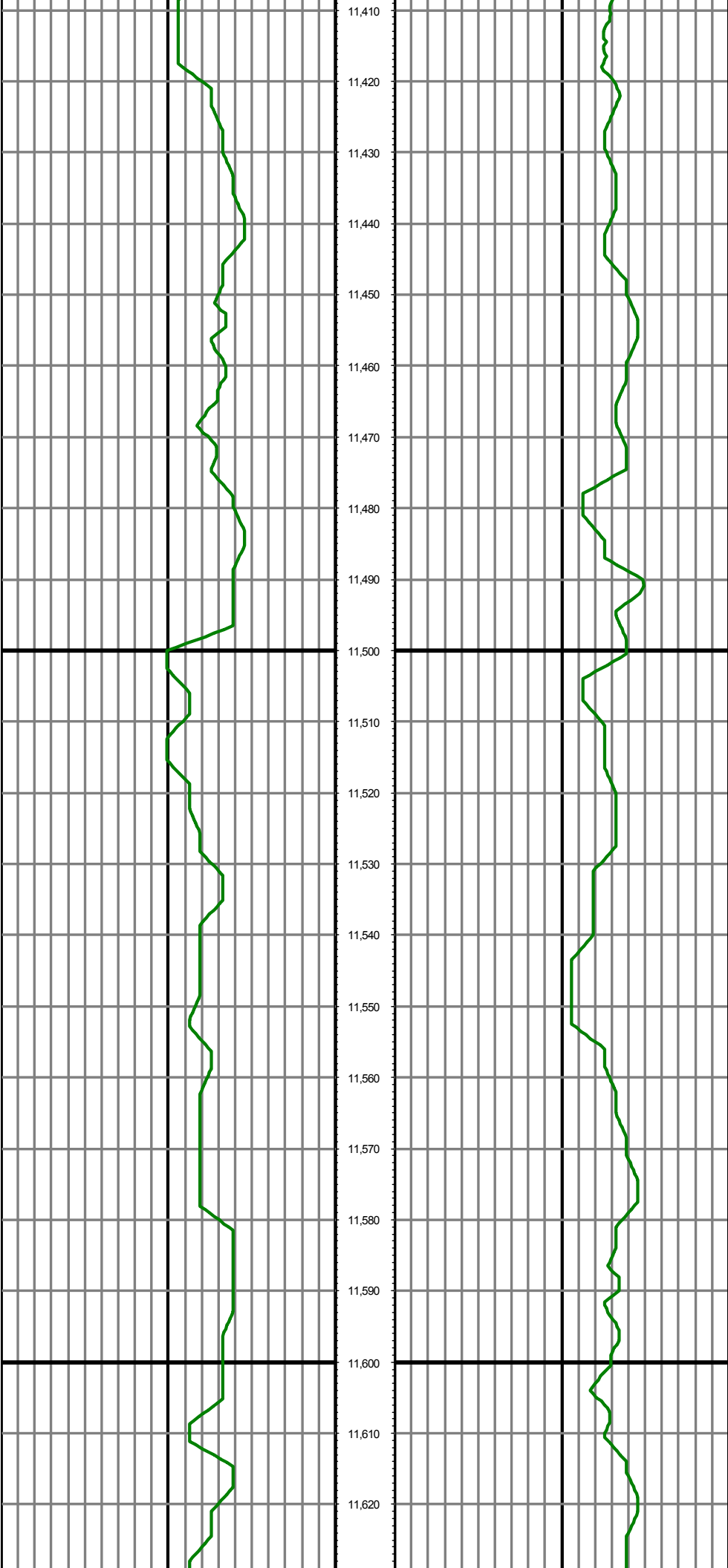
MD: 11108.00 INC: 90.60 AZ: 0.10 TVD: 7705.14 VS: 2902.250.00



MD: 11202.00 INC: 90.60 AZ: 358.60 TVD: 7704.15 VS: 299.0200

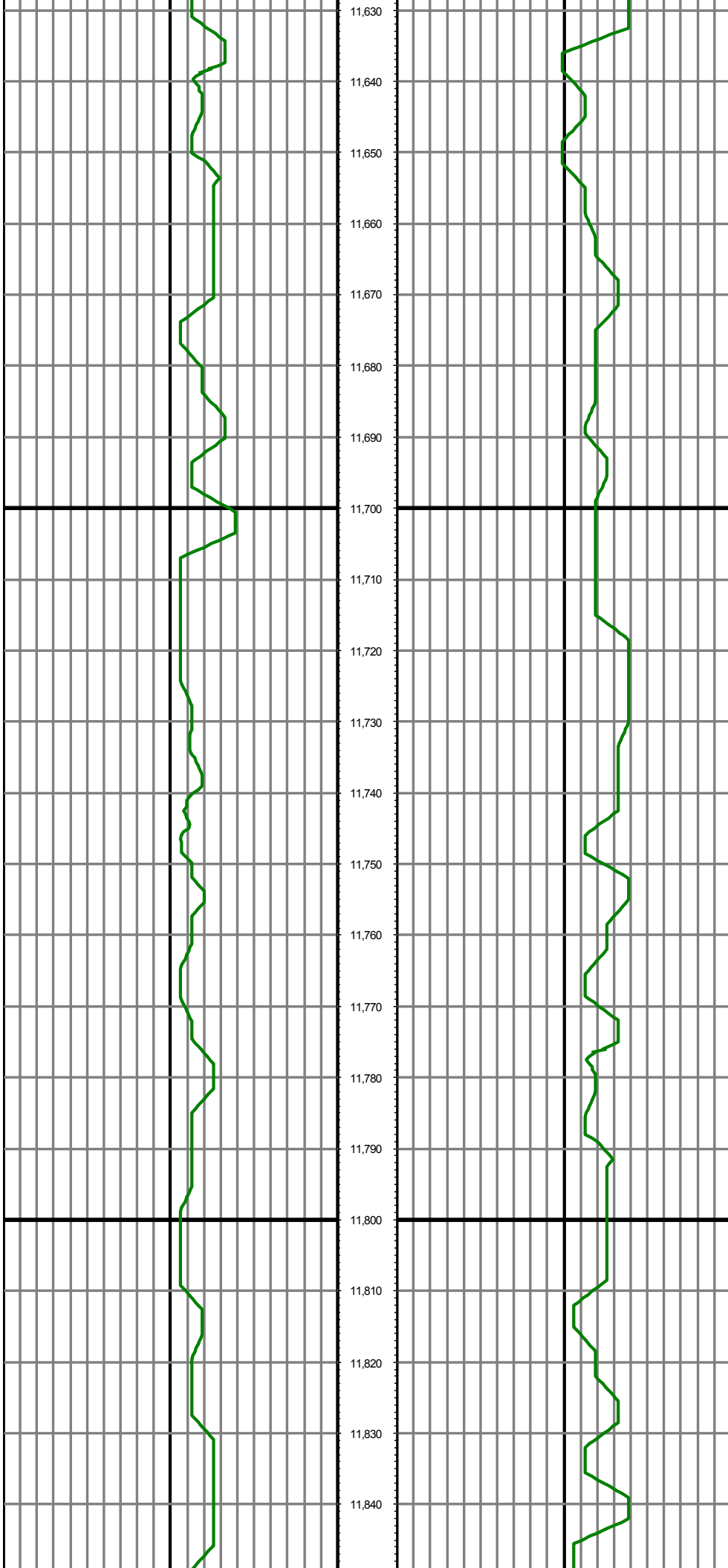
MD: 11297.00 INC: 90.40 AZ: 357.60 TVD: 7703.32 VS: 309.0700

MD: 11392.00 INC: 91.10 AZ: 0.10 TVD: 7702.08 VS: 3185.98200



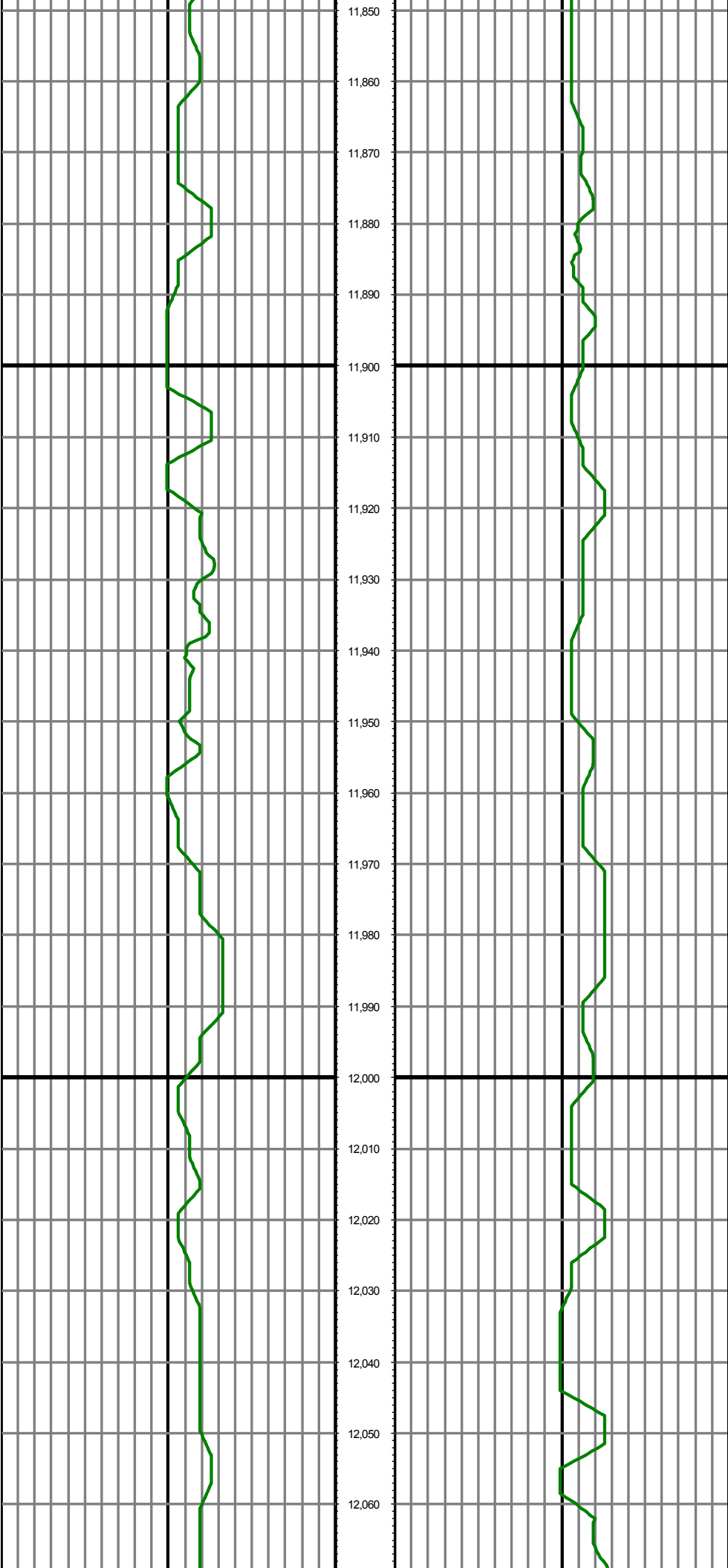
MD: 11486.00 INC: 89.40 AZ: 0.10 TVD: 7701.67 VS: 3280.00

MD: 11581.00 INC: 91.00 AZ: 0.40 TVD: 7701.34 VS: 3375.00



MD: 11676.00 INC: 89.70 AZ: 1.80 TVD: 7700.76 VS: 3470.676.00

MD: 11770.00 INC: 89.90 AZ: 1.50 TVD: 7701.08 VS: 3564.070.00

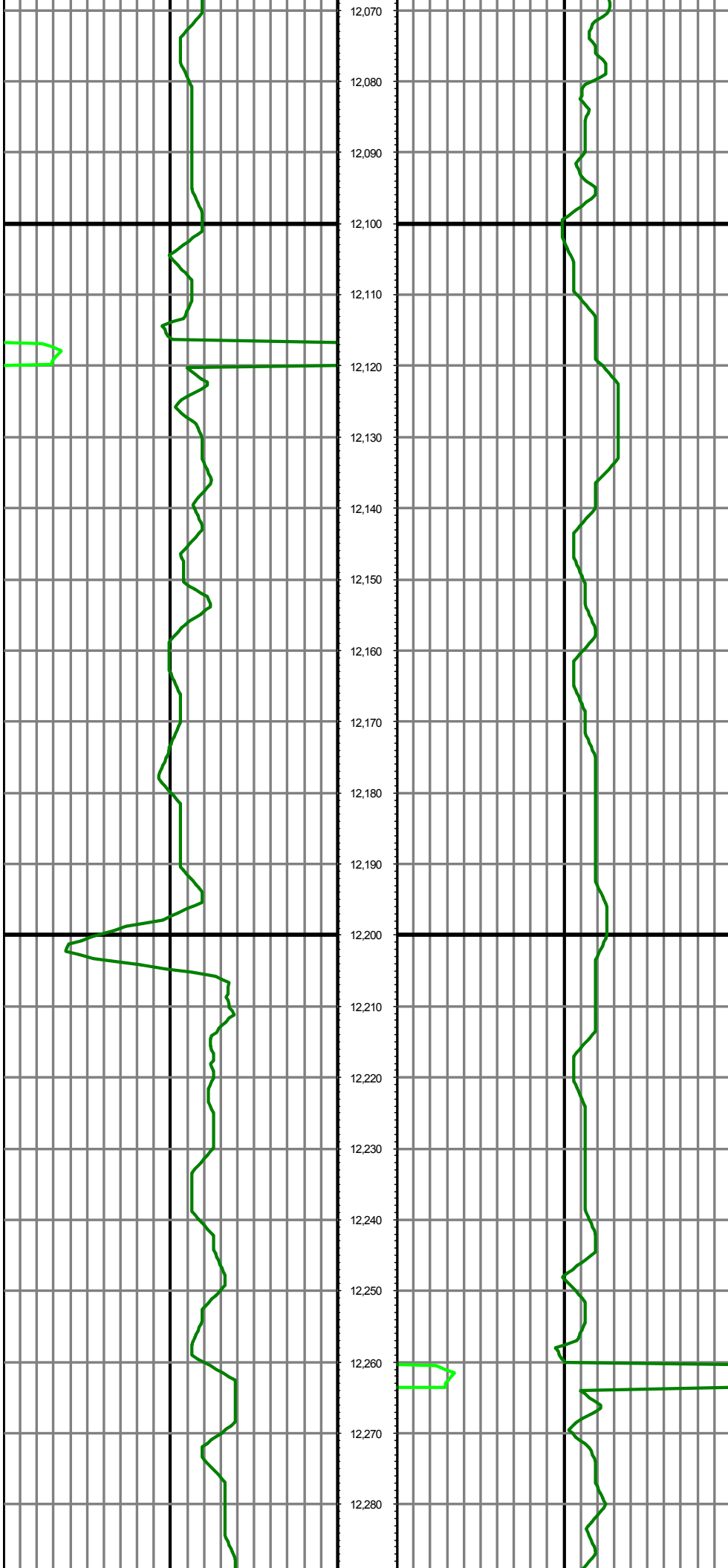


MD: 11865.00 INC: 90.60 AZ: 0.80 TVD: 7700.67 VS: 3658.95 0.0

MD: 11959.00 INC: 88.00 AZ: 0.10 TVD: 7701.82 VS: 3752.99 0.0

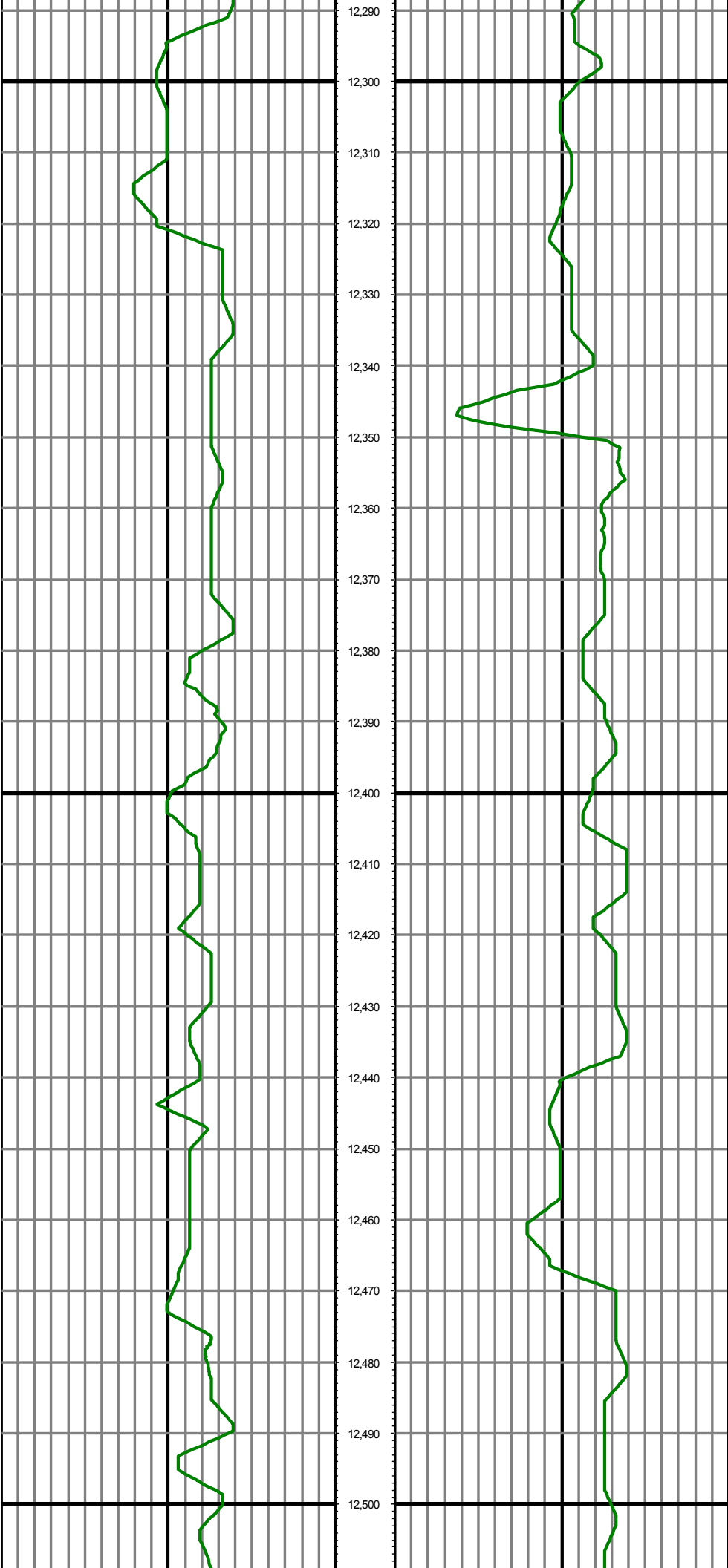
MD: 12054.00 INC: 87.40 AZ: 359.00 TVD: 7705.63 VS: 3845.80 0.0





MD: 12148.00 INC: 90.80 AZ: 0.80 TVD: 7707.11 VS: 3942.848.00

MD: 12243.00 INC: 91.30 AZ: 0.40 TVD: 7705.37 VS: 4038.843.00



MD: 12337.00 INC: 91.00 AZ: 359.30 TVD: 7703.48 VS: 42337.00

MD: 12432.00 INC: 90.80 AZ: 0.10 TVD: 7701.99 VS: 42332.00

