

**Premier Directional Drilling**

12941 North Freeway
#400
Houston, TX 77060
281-673-4000

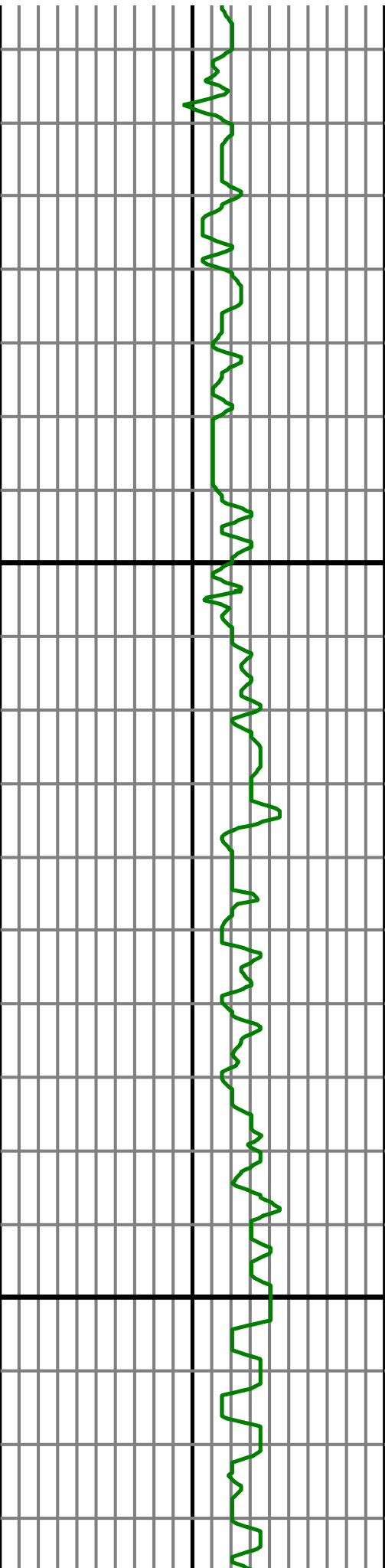
Troudt 36N-33HZ**Scale 5":100' - MD****5/16/2015 3:12 AM****Oper. Company:** Anadarko Petroleum**Well:** Troudt 36N-33HZ**Field:** Wattenberg**Rig:** H&P 311**Well ID:** 05123392800000**Job Number:** R15194**Notes:** LWD Real Time Log
Gamma Correction Determined by Pipe ID & OD, Mud Weight & Bit Size**State:** Colorado**County:** Weld**Country:** United States**Location:** Ft. Lupton**Start Date:** 05/14/2015 19:00:00**End Date:** 05/16/2015 03:10:04**Latitude:** 40.088398**Longitude:** -104.899430**Elev KB:** 5062'**Elev DF:** 5062'**Elev GL:** 5037'**Notes:** Datum: NAD 1983 Map Zone: 13N (108 W to 102W) Total Correction: 8.46° (Final Mag Var) Grid Convergence: 0.07°**Operator 1:** Robert Grossman**Operator 2:** Chris Kurz**Notes:** Smoothing: 7Gap Fill: 10Survey Tool Type: Mud Pulse Calculation Method: Minimum Curvature

Tool Run Data	Run #1	Run #2	Run #3	Run #4	Run #5
Tool S/N	338				
Bit Size	7 7/8				
Cal Factor	5.01552				
Gamma Offset	50.00				
Resistivity Offset	0.00				
Start Depth	1185.00				
StartDate	5/13/2015				
StartTime	5:00 PM				
EndDepth	12570.00				
EndDate	5/16/2015				
EndTime	3:10 AM				
Mud Type	OBM				
Mud Weight	9.3				
Funnel Viscosity	52				
Plastic Viscosity	15				
Yield Point	11				
Gel Strength	NA				
Solids Content	7.3				
Sand Content	NA				
Mud Alkalinity	2.75				
Filtrate Alkalinity	NA				
Chlorides	50000				
Mud RM	NA				
Mud RMF	NA				
Mud RMC	NA				
Mud RM at BHT	NA				
Temperature	135				
Hole Data			Casing Data		
Size	From	To	Size	From	To
13.5	0.00	1195.00	9.625	0.00	1185.00
7.875	1195.00	12570.00	5.5	0.00	12570.00

All interpretations are opinions based on inferences from electrical or other measurements and we cannot and do not guarantee the accuracy or correctness of any interpretation, and we shall not except in the case of gross or willful negligence on our part, be liable or responsible for any loss, cost damages or expenses incurred or sustained by anyone resulting from an interpretation made by any of our officers, agents, or employees.

200.002400.00

200.002400.00



MD

FT

6,830
6,840
6,850
6,860
6,870
6,880
6,890
6,900
6,910
6,920
6,930
6,940
6,950
6,960
6,970
6,980
6,990
7,000
7,010
7,020
7,030

0.00

200.00



200.002400.00



