



Premier Directional Drilling
12941 North Freeway Ste. 400
Houston, TX 77060
(512) 809-1748

Troudt 13N-33HZ
Scale 5":100' - MD
4/24/2015 12:17 AM

Oper. Company: Anadarko Petroleum

Well: Troudt 13N-33HZ

Field: Wattenberg /DJ

Rig: H&P 311

Well ID: 05-123-39283

Job Number: R15190

State: Colorado

County: Weld

Country: USA

Location: SESE Sec:14 Twp:2N Rng:67W Meridia 6

Start Date: 04/20/2015 03:15:00

End Date: 04/24/2015 00:12:18

Latitude: 40° 08' 84.01 N
Longitude: 104° 89' 98.590 W

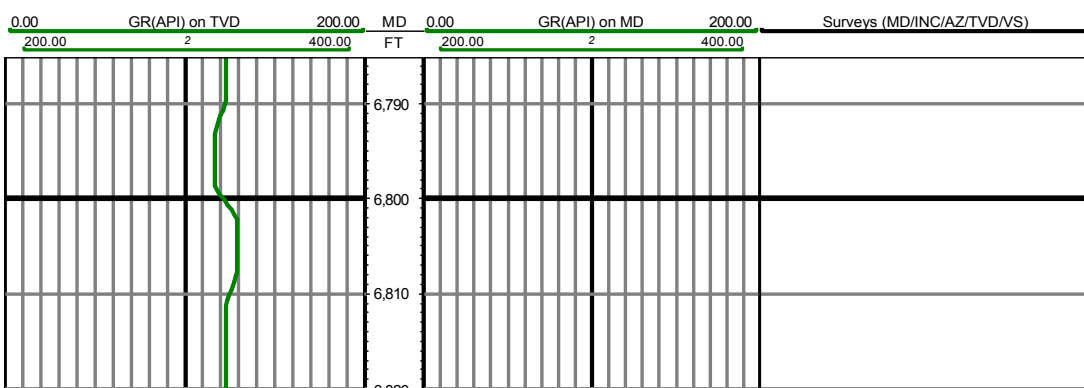
Elev KB: 5064
Elev DF: 5064
Elev GL: 5037

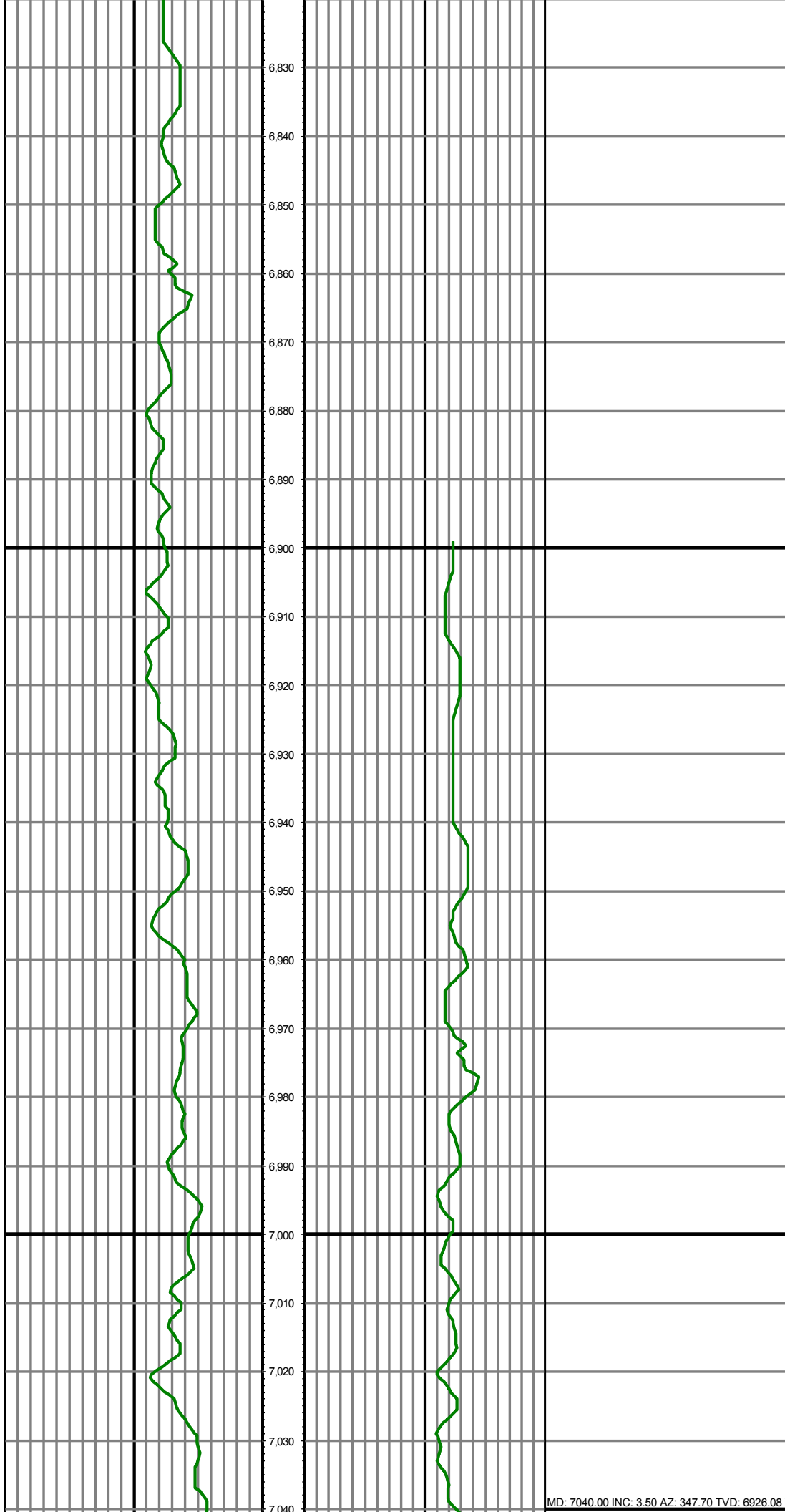
Operator 1: Mike Gunther

Operator 2: Chris Kurz

Tool Run Data	Run #1	Run #2	Run #3	Run #4	Run #5
Tool S/N	3098				
Bit Size	8.5				
Cal Factor	6.463				
Gamma Offset	53.00				
Resistivity Offset	0.00				
Start Depth	1146.00				
StartDate	4/20/2015				
StartTime	3:12 AM				
EndDepth	12488.00				
EndDate	4/24/2015				
EndTime	12:13 AM				
Mud Type	OBM				
Mud Weight	9.6				
Funnel Viscosity	85				
Yield Point	13				
Gel Strength	6				
Solids Content	5.5				
Sand Content	0				
Chlorides	45000				
Temperature	211				
Hole Data			Casing Data		
Size	From	To	Size	From	To
8.5	1146.00	12488.00	9.625	0.00	1191.00

All interpretations are opinions based on inferences from electrical or other measurements and we cannot and do not guarantee the accuracy or correctness of any interpretation, and we shall not except in the case of gross or willful negligence on our part, be liable or responsible for any loss, cost damages or expenses incurred or sustained by anyone resulting from an interpretation made by any of our officers, agents, or employees.





MD: 7040.00 INC: 3.50 AZ: 347.70 TVD: 6926.08

7,050

7,060

7,070

7,080

7,090

7,100

7,110

7,120

7,130

MD: 7135.00 INC: 17.80 AZ: 7.10 TVD: 7019.22

7,140

7,150

7,160

7,170

7,180

7,190

7,200

7,210

7,220

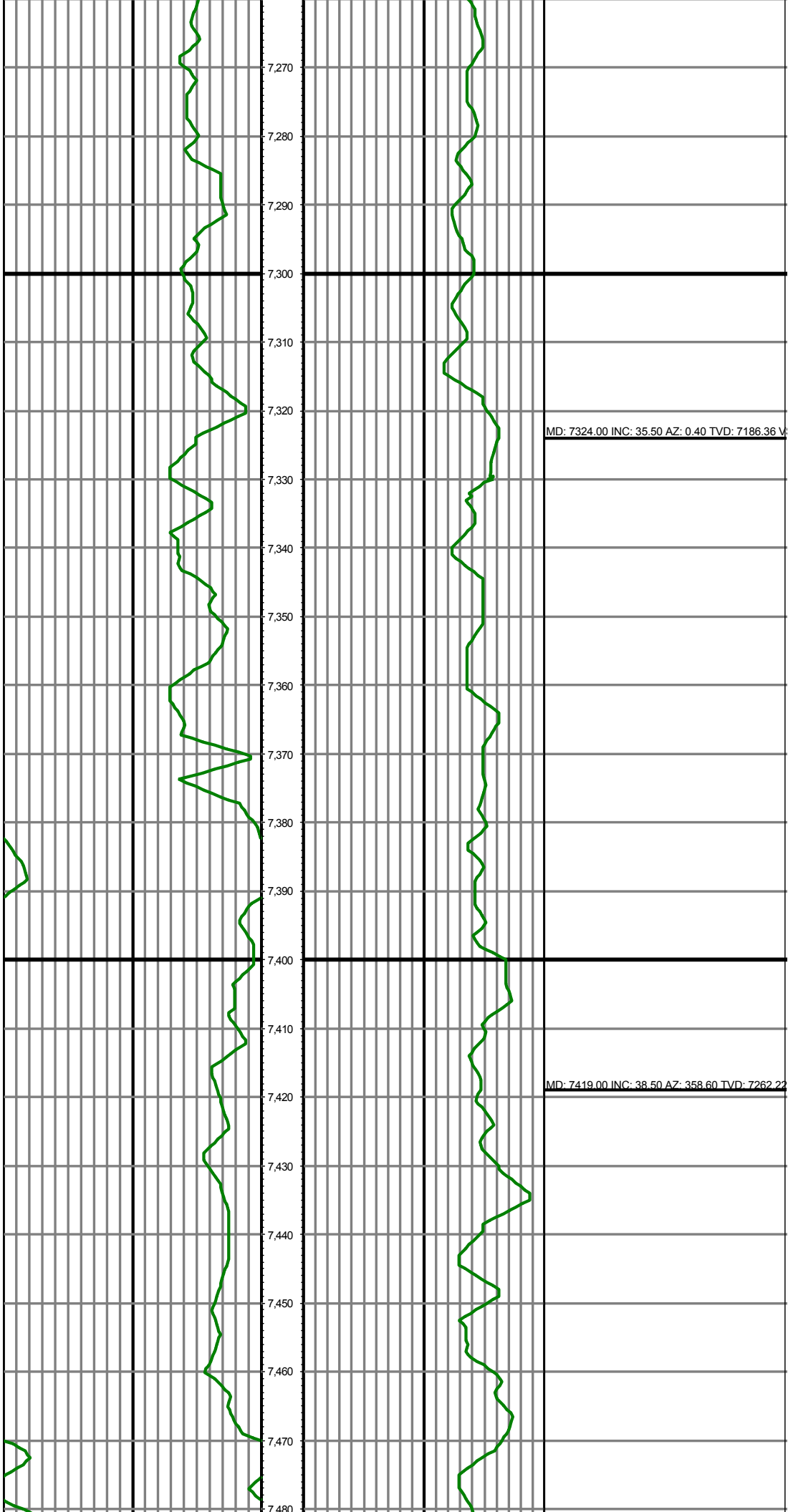
7,230

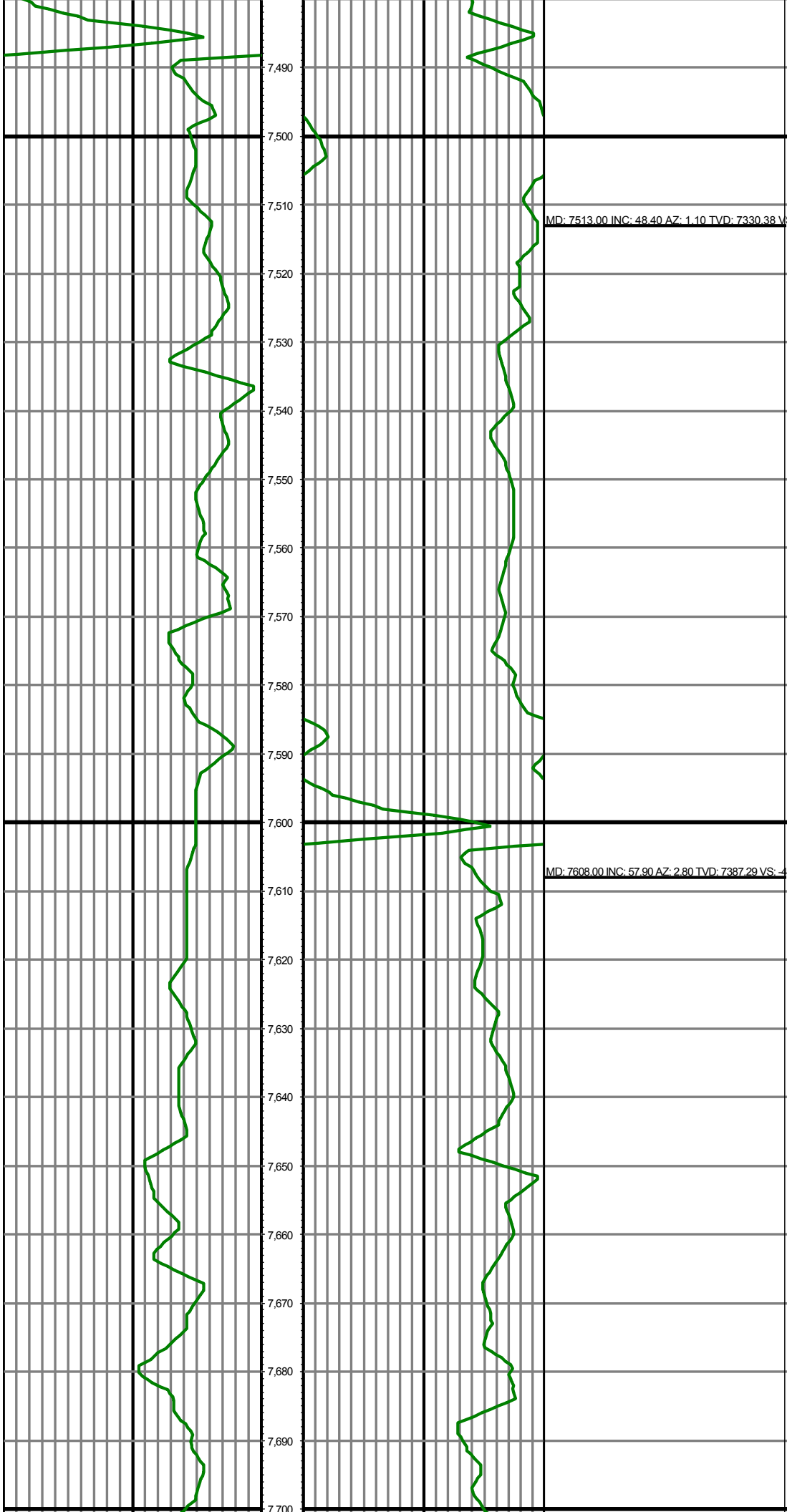
MD: 7230.00 INC: 28.20 AZ: 6.00 TVD: 7106.55 VS: -6

7,240

7,250

7,260

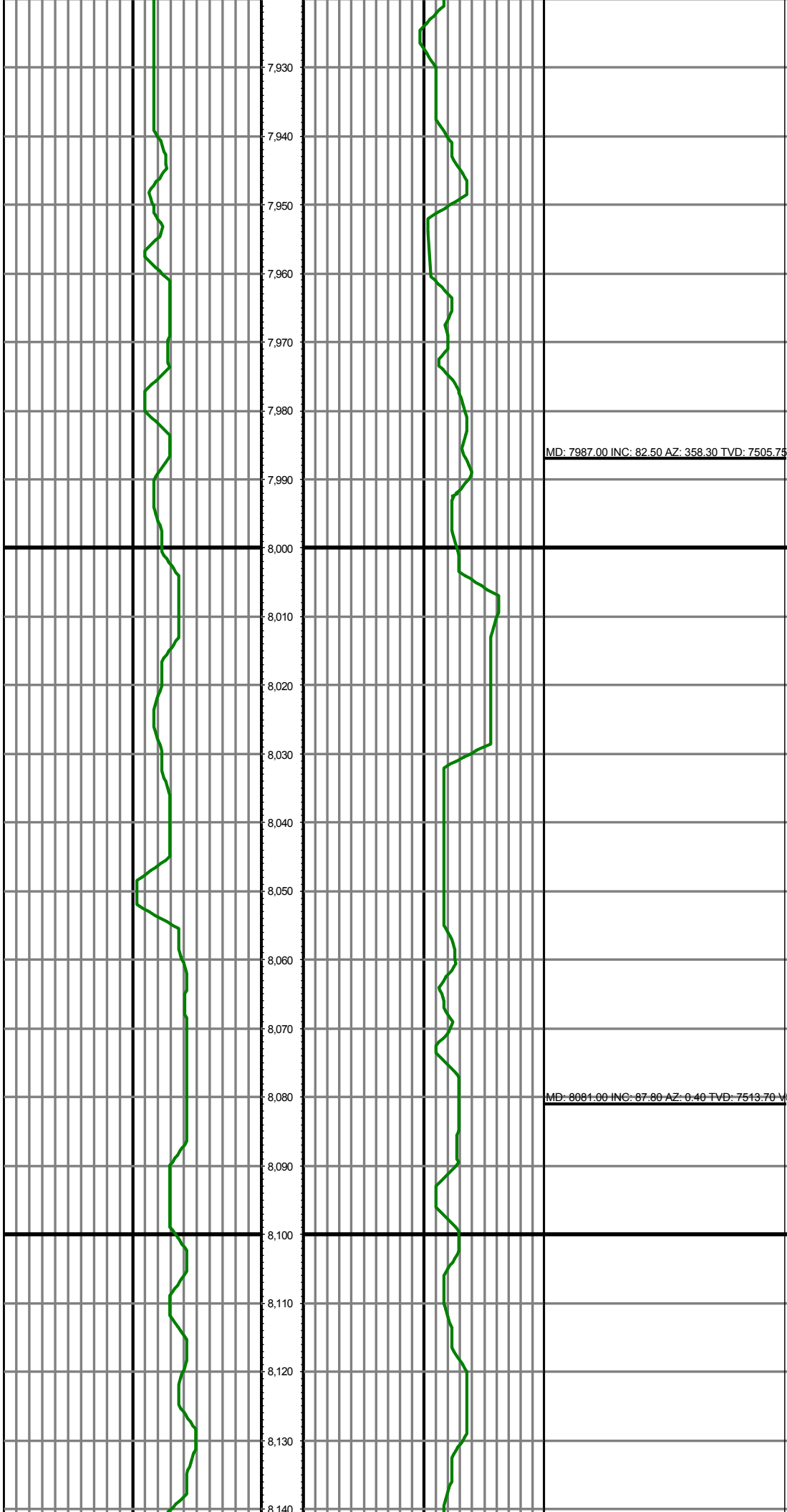




MD: 7703.00 INC: 66.50 AZ: 3.20 TVD: 7431.56 VS: -2

MD: 7797.00 INC: 73.70 AZ: 0.70 TVD: 7463.54 VS: -2

MD: 7892.00 INC: 76.20 AZ: 359.70 TVD: 7488.20 VS: -2



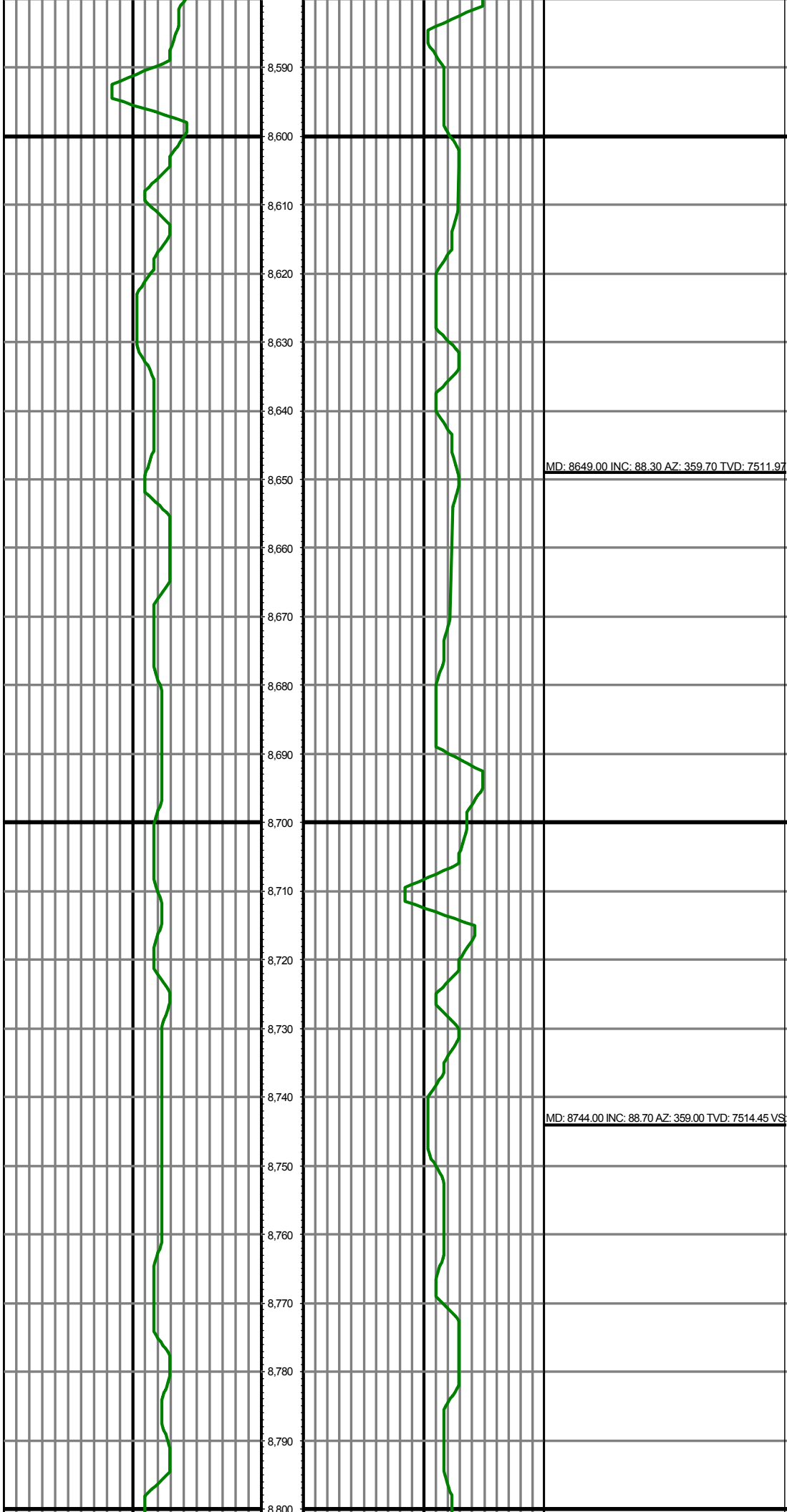
MD: 8176.00 INC: 90.60 AZ: 1.80 TVD: 7515.02 VS: 20

MD: 8270.00 INC: 91.80 AZ: 2.50 TVD: 7513.05 VS: 20

MD: 8365.00 INC: 91.70 AZ: 1.80 TVD: 7510.15 VS: 4%

MD: 8460.00 INC: 90.60 AZ: 2.50 TVD: 7508.25 VS: 4%

MD: 8554.00 INC: 88.30 AZ: 1.10 TVD: 7509.15 VS: 5%



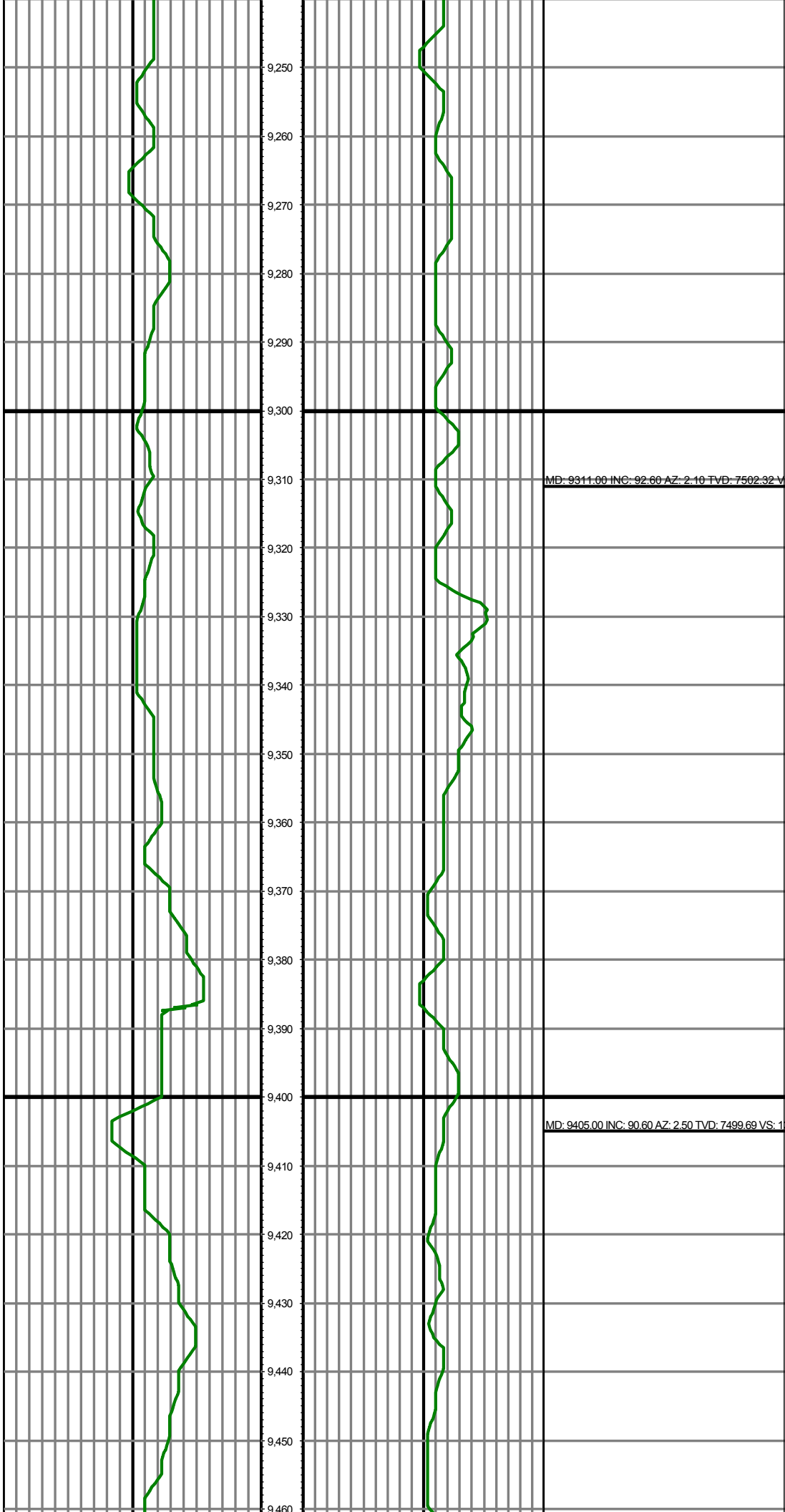
MD: 8838.00 INC: 91.00 AZ: 358.60 TVD: 7514.70

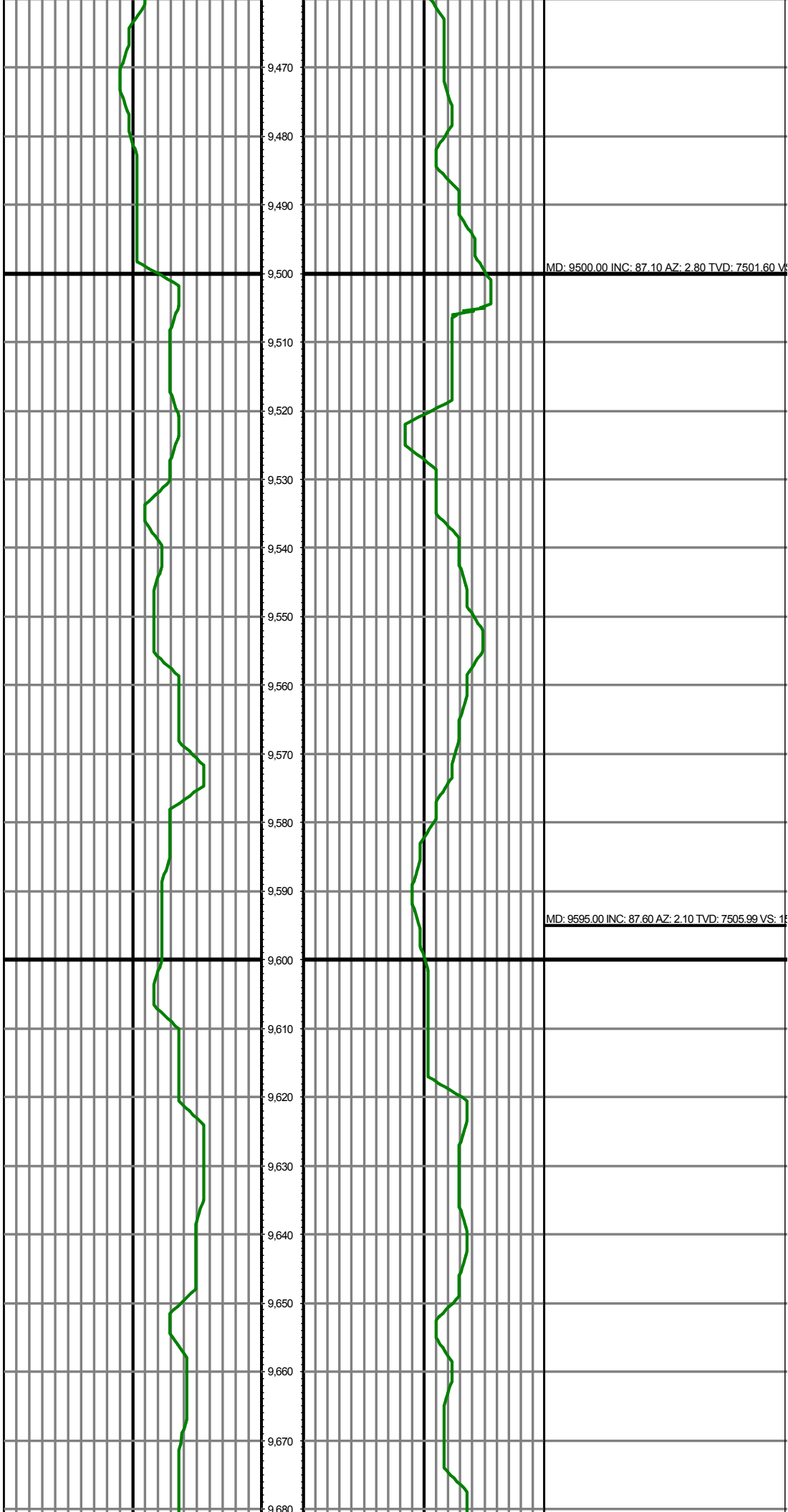
MD: 8933.00 INC: 93.30 AZ: 358.30 TVD: 7511.14 VS

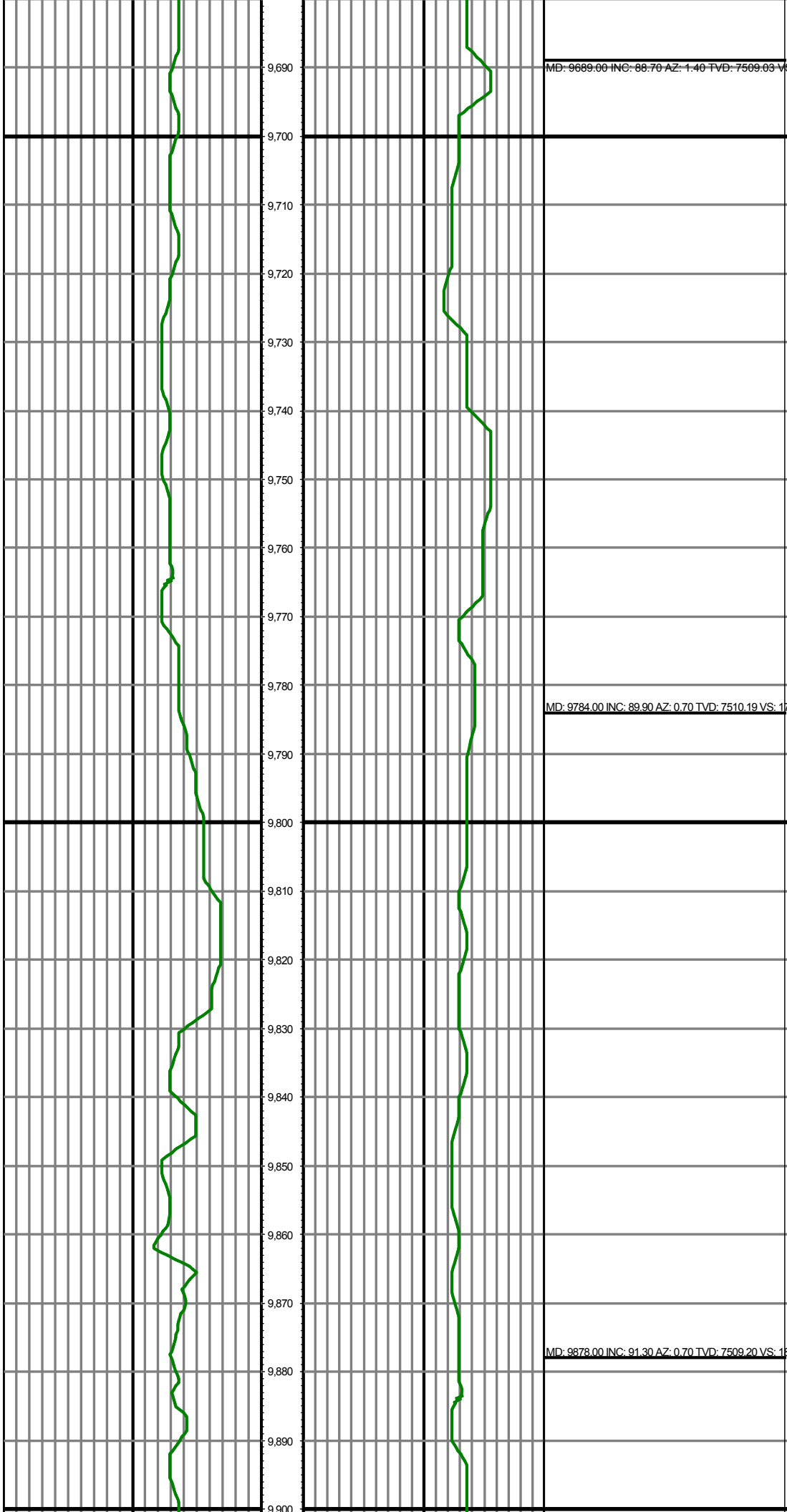
MD: 9027.00 INC: 91.30 AZ: 358.30 TVD: 7507.36

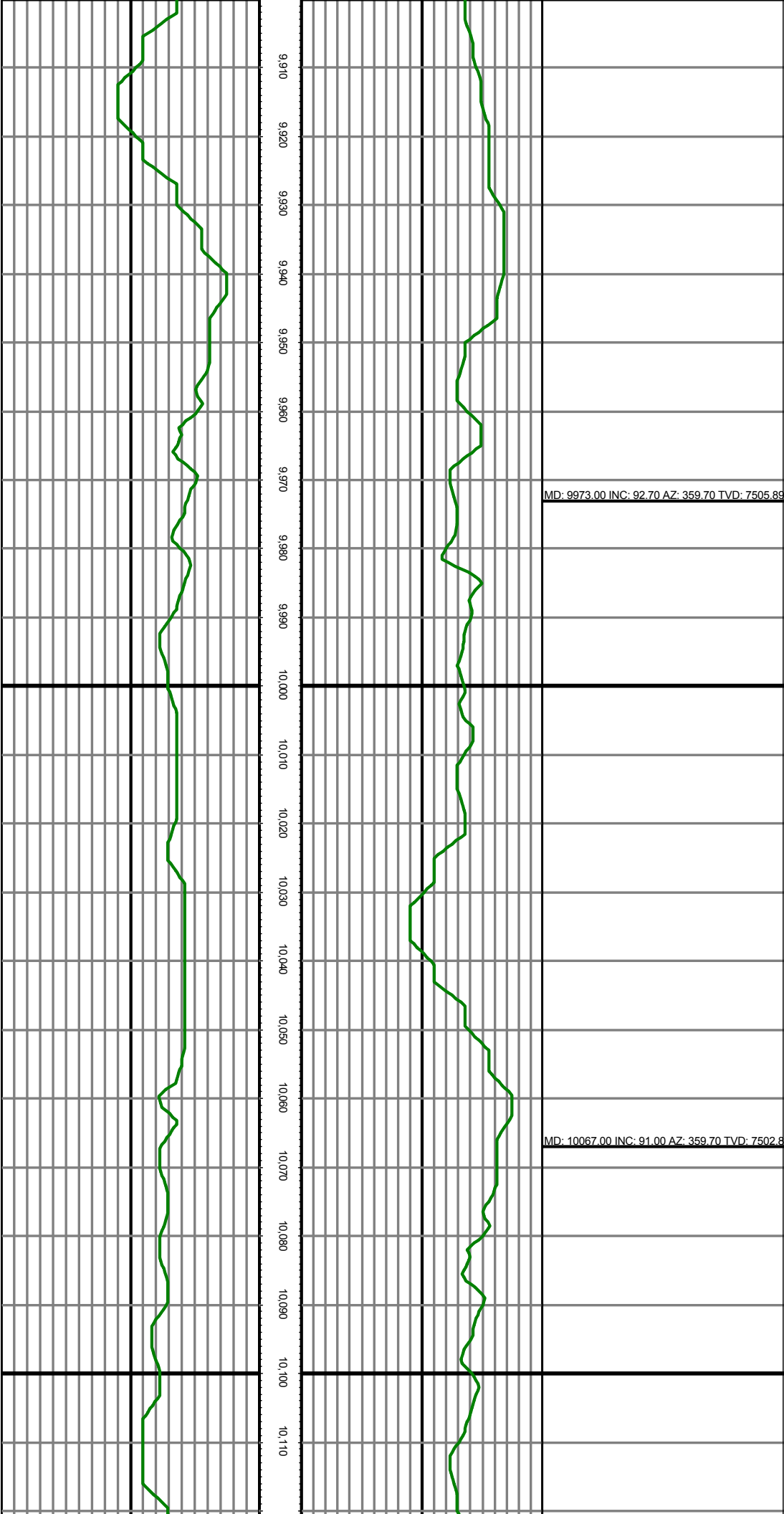
MD: 9122.00 INC: 90.80 AZ: 0.00 TVD: 7505.62 VS: 17

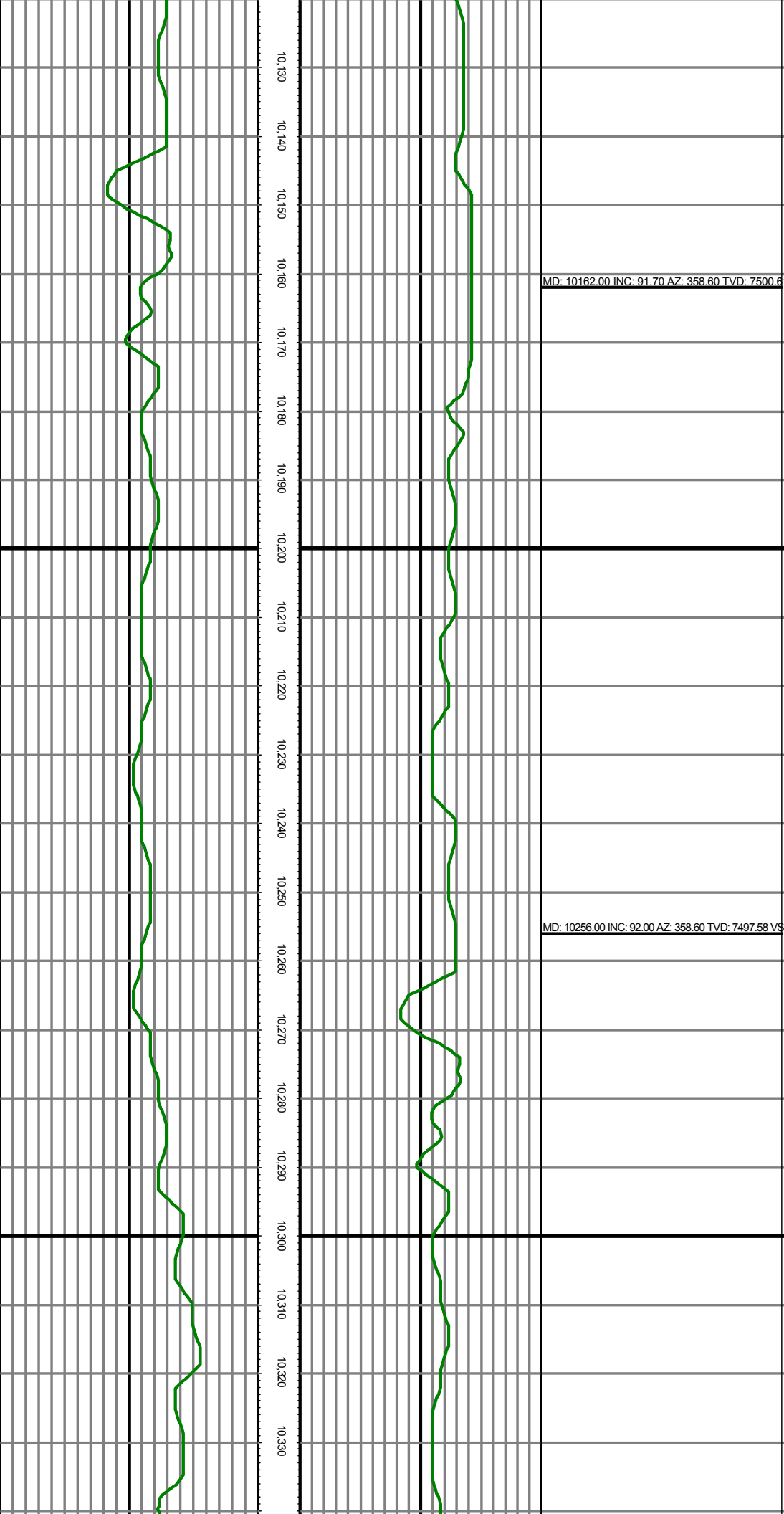
MD: 9216.00 INC: 90.30 AZ: 2.50 TVD: 7504.72 VS: 17







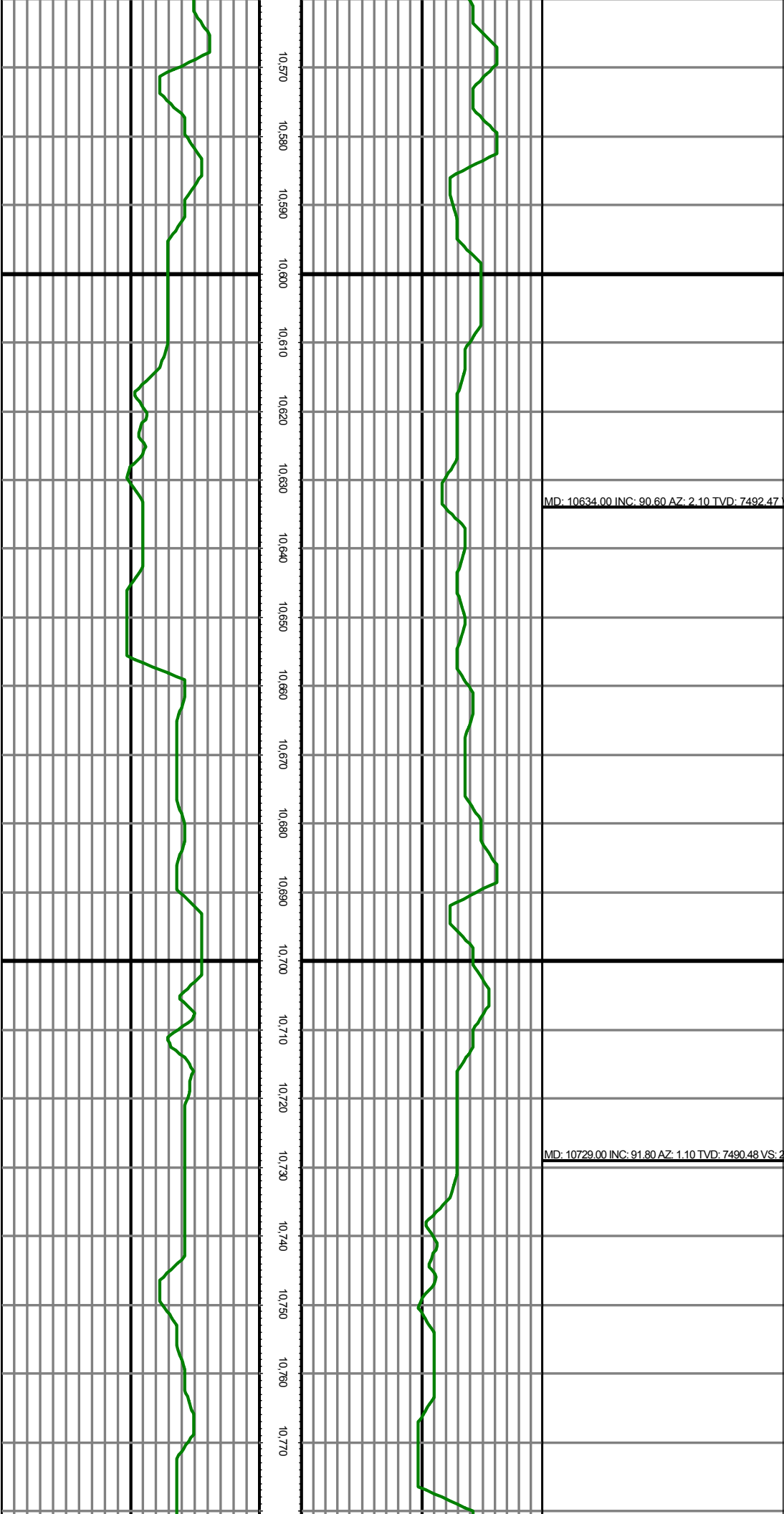


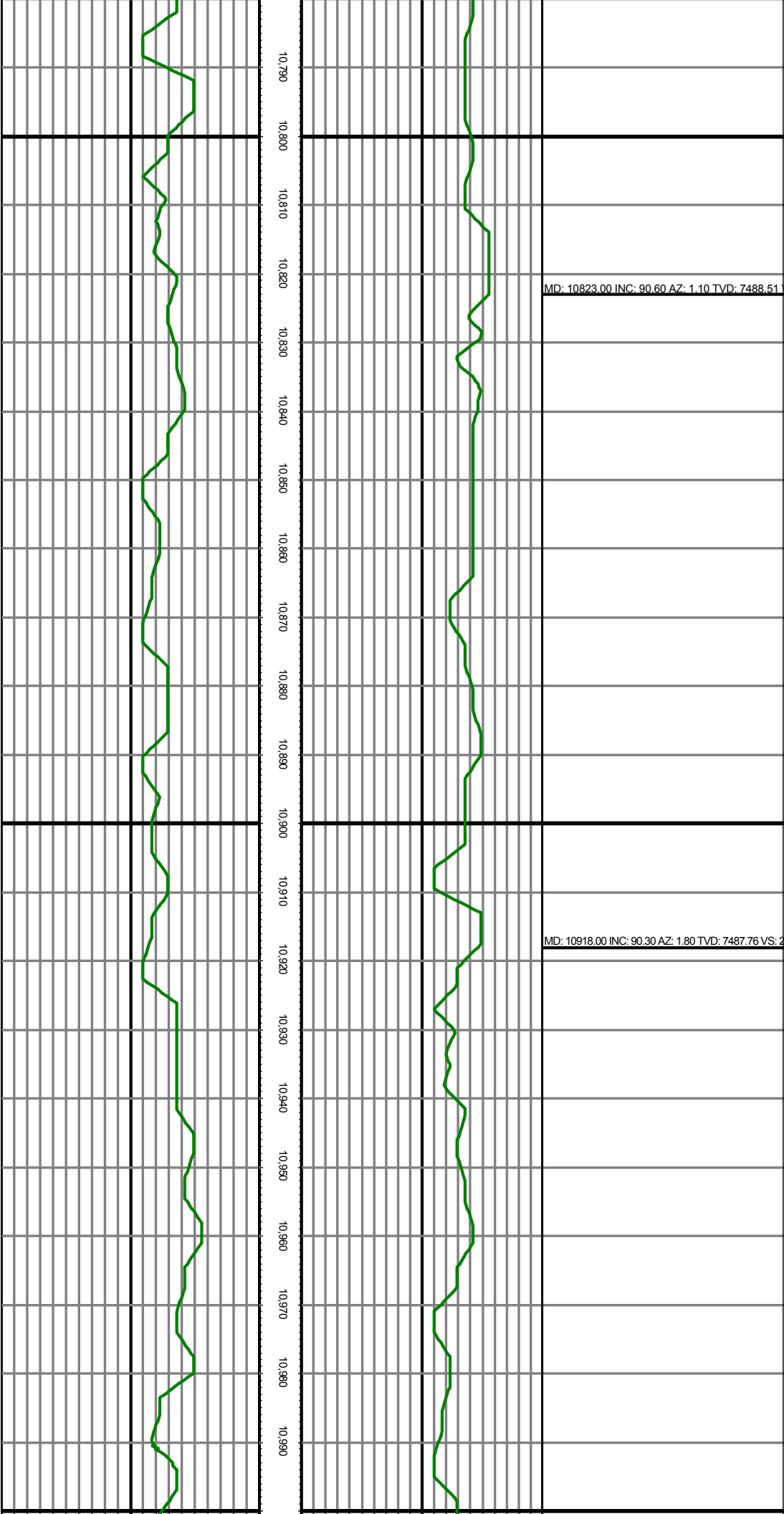


MD: 10350.00 INC: 90.40 AZ: 0.40 TVD: 7495.61

MD: 10445.00 INC: 91.30 AZ: 0.40 TVD: 7494.20 VS: 2

MD: 10540.00 INC: 90.10 AZ: 2.50 TVD: 7493.04 VS: 2

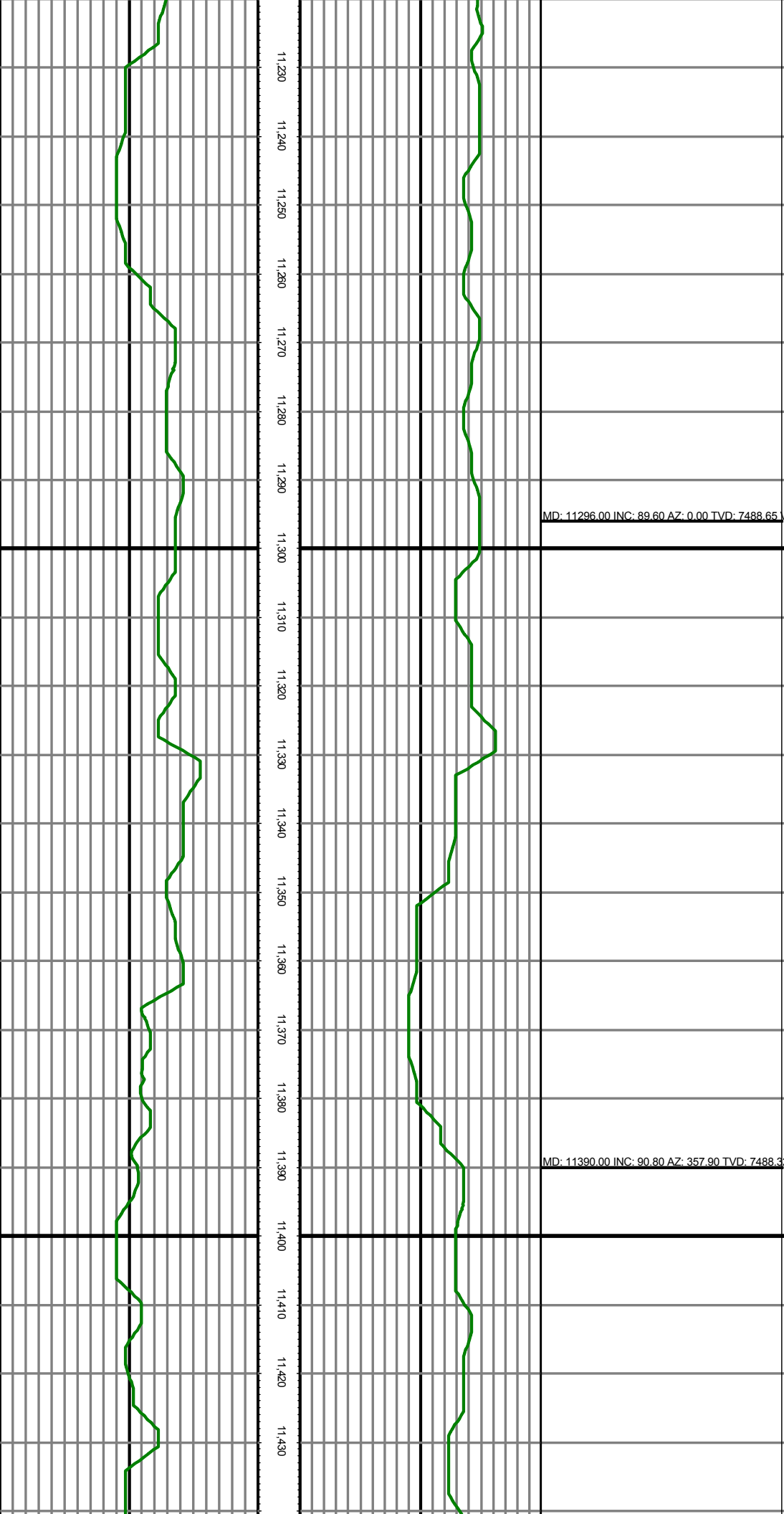


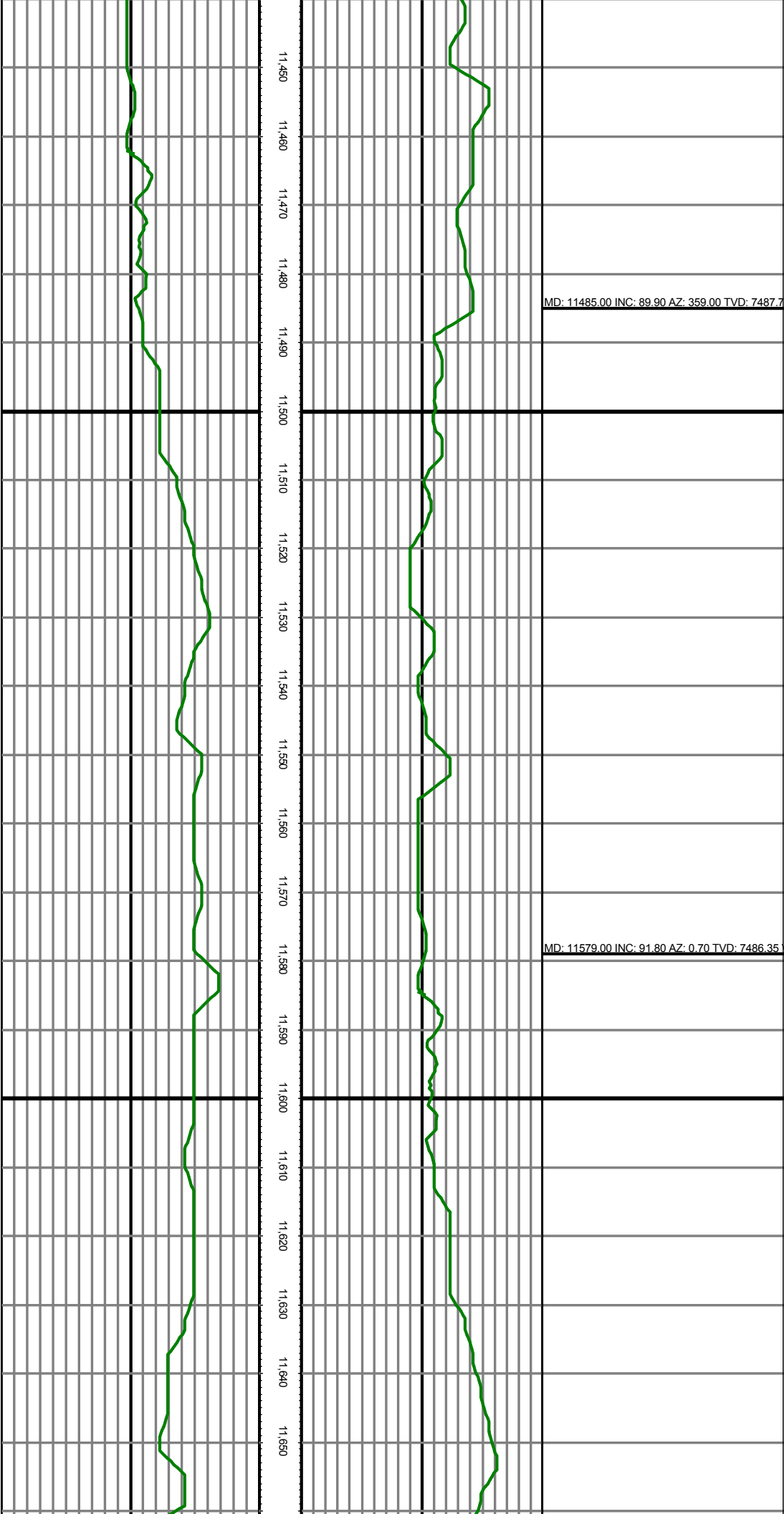


MD: 11012.00 INC: 88.90 AZ: 2.80 TVD: 7488.42

MD: 11106.00 INC: 89.60 AZ: 2.80 TVD: 7489.65 VS: 3

MD: 11200.00 INC: 90.00 AZ: 2.80 TVD: 7490.00 VS: 3





MD: 11674.00 INC: 89.90 AZ: 0.00 TVD: 7484.94

MD: 11769.00 INC: 91.00 AZ: 359.30 TVD: 7484.1

MD: 11863.00 INC: 92.90 AZ: 357.60 TVD: 7481.00 VS

