

**Premier Directional Drilling**

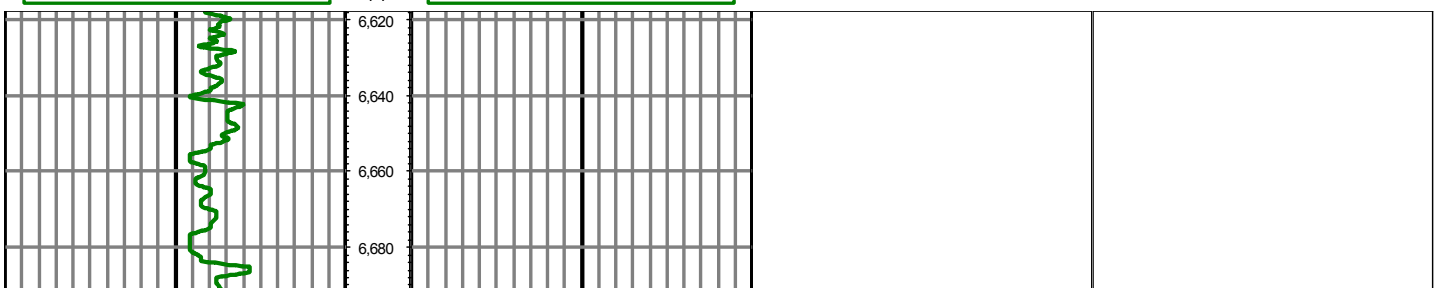
12941 North Freeway Suite 400
Houston TX 77060
281-673-4000

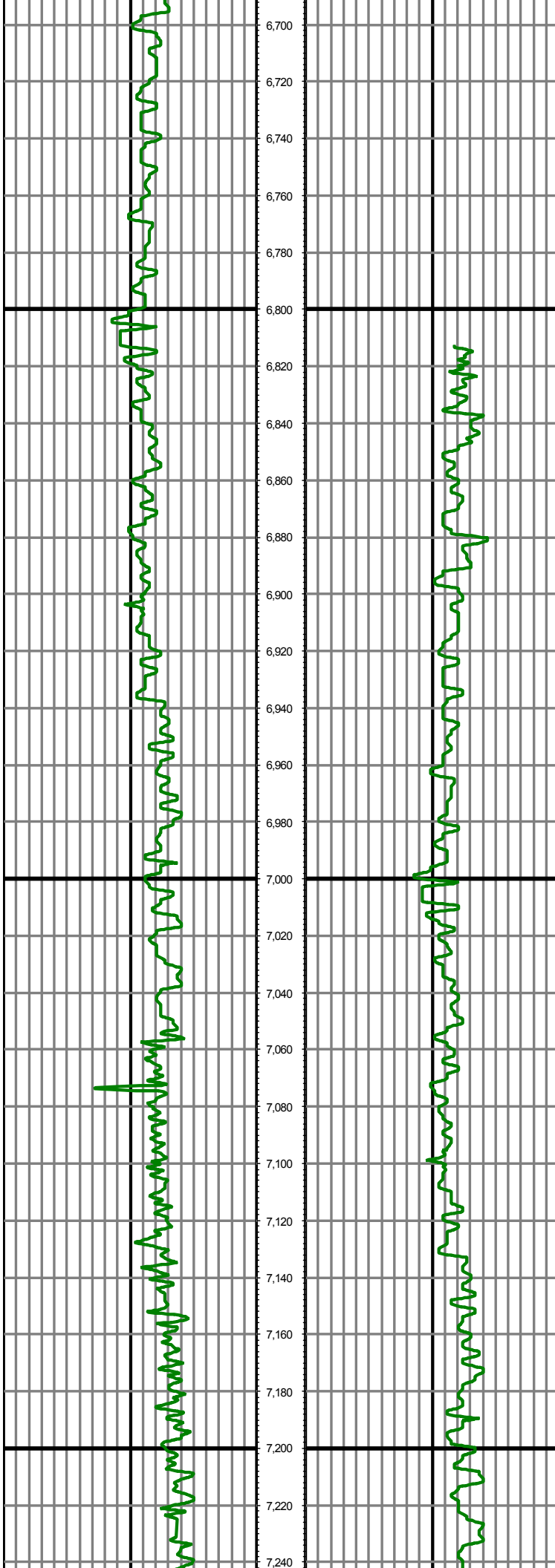
Troudt 34C-33HZ**Scale 2":100' - MD****4/18/2015 4:10 AM****Oper. Company:** Anadarko Petroleum**Well:** Troudt 34C-33HZ**Field:** Wattenberg / DJ**Rig:** H & P 311**Well ID:** 05123392840000**Job Number:** R15183**State:** Colorado**County:** Weld**Country:** USA**Location:** SESE Sec:14 Twp:2N Rng: 67W Meridian: 6**Start Date:** 04/13/2015 00:00:00**End Date:** 04/18/2015 04:01:46**Latitude:** 40°5'18.246N**Longitude:** 104°53'59.877W**Elev KB:** 5061.5**Elev DF:** 24.5**Elev GL:** 5,037**Notes:** Premier Directional Drilling Datum: NAD 1927 Projection: Texas Central 4203 Total Correction: Grid Convergence:**Operator 1:** Mike Gunther**Operator 2:** Chris Kurz**Notes:** Smoothing: 7Gap:10 Survey Tool Type: Mud Pulse Calculation Method: Minimum Curvature

Tool Run Data	Run #1	Run #2	Run #3	Run #4	Run #5
Tool S/N	265				
Bit Size	6 1/8				
Cal Factor	3.114				
Gamma Offset	54.00				
Resistivity Offset	0.00				
Start Depth	8340.00				
StartDate	4/13/2015				
StartTime	2:02 AM				
EndDepth	12835.00				
EndDate	4/18/2015				
EndTime	4:00 AM				
Mud Type	OBM				
Mud Weight	9.3				
Funnel Viscosity	90				
Plastic Viscosity	19				
Yield Point	10				
Solids Content	9.3				
Sand Content	0				
Chlorides	38000				
Temperature	230				
Hole Data			Casing Data		
Size	From	To	Size	From	To
6 1/8	8340.00	12835.00			

All interpretations are opinions based on inferences from electrical or other measurements and we cannot and do not guarantee the accuracy or correctness of any interpretation, and we shall not except in the case of gross or willful negligence on our part, be liable or responsible for any loss, cost damages or expenses incurred or sustained by anyone resulting from an interpretation made by any of our officers, agents, or employees.

0.00 GR(API) on TVD 200.00 MD 0.00 GR(API) 200.00 Surveys (MD/INC/AZ)
200.00 2 400.00 FT 200.00 2 400.00





MD: 7184.00 INC: 1.60 AZ: 298.20 7.184.00

MD: 7278.00 INC: 1.70 AZ: 298.10 7.278.00

MD: 7373.00 INC: 8.30 AZ: 349.20 7.373.00

MD: 7467.00 INC: 18.70 AZ: 359.30 7.467.00

MD: 7561.00 INC: 26.70 AZ: 0.60 7.561.00

MD: 7656.00 INC: 37.10 AZ: 3.80 7.656.00

MD: 7750.00 INC: 46.50 AZ: 0.70 7.750.00

MD: 7844.00 INC: 54.40 AZ: 1.00 7,844.00

MD: 7939.00 INC: 61.70 AZ: 1.40 7,939.00

MD: 8033.00 INC: 69.80 AZ: 2.80 8,033.00

MD: 8128.00 INC: 77.00 AZ: 4.40 8,128.00

MD: 8222.00 INC: 83.30 AZ: 2.20 8,222.00

MD: 8285.00 INC: 87.60 AZ: 1.80 8,285.00

MD: 8433.00 INC: 89.30 AZ: 2.20 8,433.00

MD: 8527.00 INC: 90.10 AZ: 2.20 8,527.00

MD: 8621.00 INC: 90.70 AZ: 0.80 8,621.00

MD: 8715.00 INC: 90.60 AZ: 0.90 8,715.00

MD: 8809.00 INC: 90.80 AZ: 359.50 8,809.00

MD: 8903.00 INC: 89.60 AZ: 358.80 8.903.00

MD: 8997.00 INC: 88.50 AZ: 359.10 8.997.00

MD: 9091.00 INC: 88.50 AZ: 358.30 9.091.00

MD: 9186.00 INC: 89.20 AZ: 358.30 9.186.00

MD: 9280.00 INC: 90.00 AZ: 358.30 9.280.00

MD: 9374.00 INC: 91.00 AZ: 0.20 9.374.00

MD: 9468.00 INC: 89.30 AZ: 359.90 9,468.00

MD: 9562.00 INC: 91.00 AZ: 1.70 9,562.00

MD: 9657.00 INC: 89.10 AZ: 2.20 9,657.00

MD: 9751.00 INC: 90.20 AZ: 2.70 9,751.00

MD: 9845.00 INC: 90.50 AZ: 1.10 9,845.00

MD: 9939.00 INC: 90.70 AZ: 359.40 9,939.00

MD: 10033.00 INC: 91.30 AZ: 359.10 10,033.00

MD: 10127.00 INC: 89.60 AZ: 359.10 10,127.00

MD: 10222.00 INC: 91.30 AZ: 359.90 10,222.00

MD: 10316.00 INC: 92.00 AZ: 359.60 10,316.00

MD: 10410.00 INC: 91.00 AZ: 0.30 10,410.00

MD: 10504.00 INC: 91.60 AZ: 359.80 10,504.00

MD: 10598.00 INC: 90.90 AZ: 0.60 10,598.00

MD: 10693.00 INC: 89.70 AZ: 0.90 10,693.00

MD: 10787.00 INC: 90.30 AZ: 0.70 10,787.00

MD: 10881.00 INC: 91.20 AZ: 0.60 10,881.00

MD: 10975.00 INC: 90.60 AZ: 2.20 10,975.00

MD: 11069.00 INC: 89.80 AZ: 0.50 11,069.00

MD: 11164.00 INC: 90.10 AZ: 359.40 11,164.00

MD: 11258.00 INC: 90.80 AZ: 358.60 11,258.00

MD: 11352.00 INC: 89.90 AZ: 359.30 11,352.00

MD: 11447.00 INC: 89.60 AZ: 0.80 11,447.00

MD: 11541.00 INC: 90.20 AZ: 0.80 11,541.00

MD: 11635.00 INC: 90.90 AZ: 1.20 11,635.00

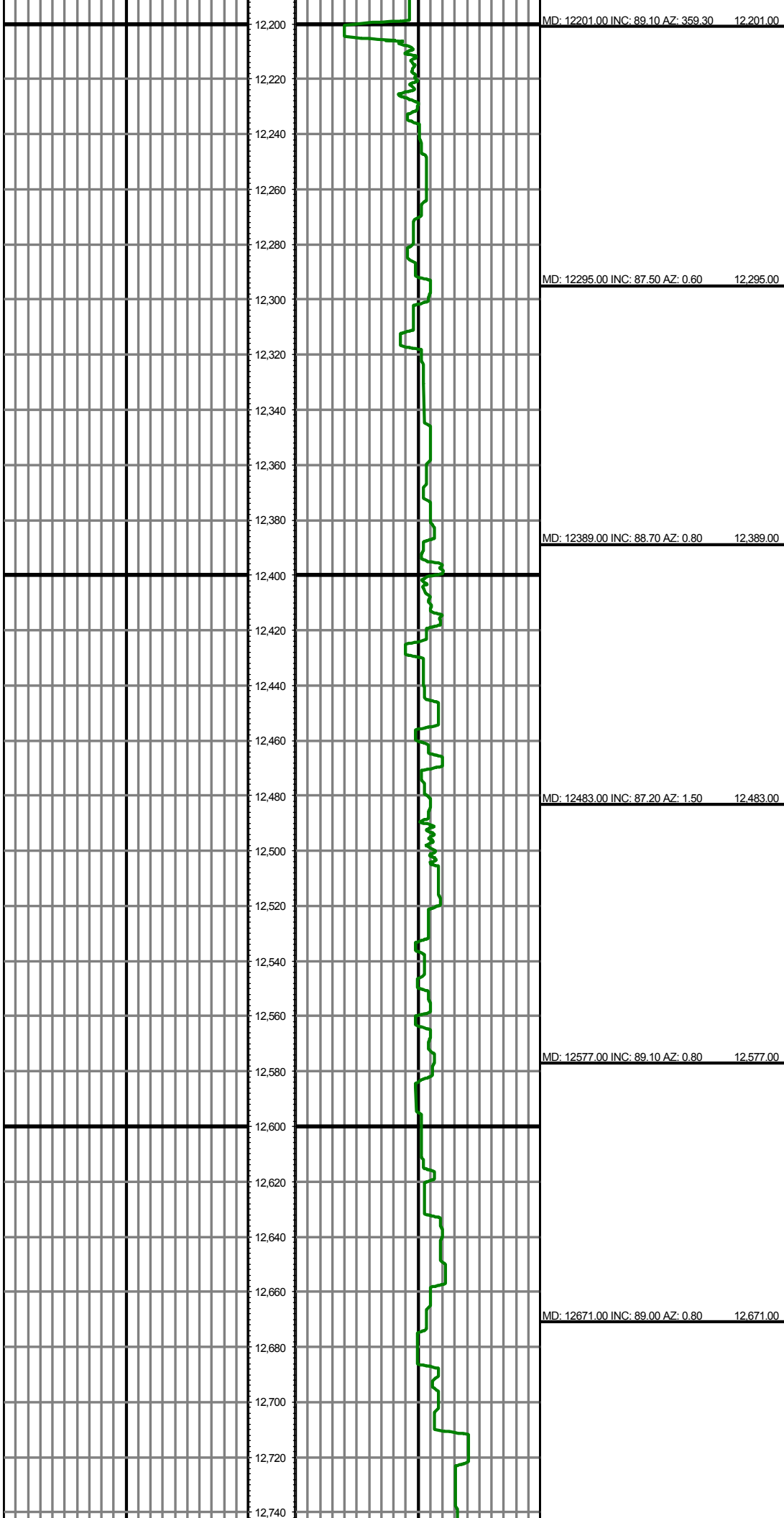
MD: 11729.00 INC: 89.00 AZ: 0.10 11,729.00

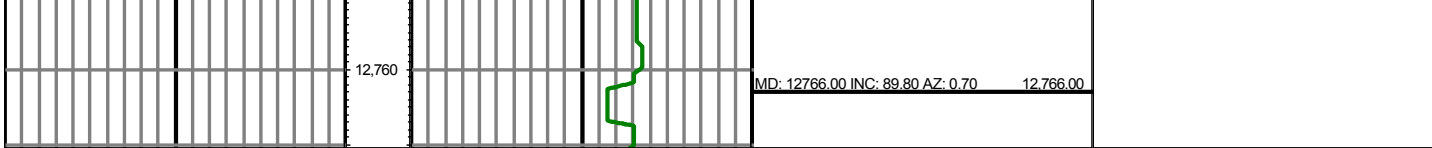
MD: 11824.00 INC: 89.70 AZ: 0.10 11,824.00

MD: 11918.00 INC: 90.40 AZ: 359.50 11,918.00

MD: 12012.00 INC: 91.20 AZ: 359.20 12,012.00

MD: 12106.00 INC: 88.90 AZ: 358.70 12,106.00





0.00	GR(API) on TVD	200.00	MD	0.00	GR(API)	200.00	Surveys (MD/INC/AZ)
200.00	2	400.00	FT	200.00	2	400.00	