



June 16, 2015

VIA ELECTRONIC TRANSMITTAL

Director Matt Lepore
Colorado Oil and Gas Conservation Commission
1120 Lincoln Street Suite 801
Denver, Colorado 80203

RE: Rule 318.A.e.

MT Maplewood 1-8-7 (Niobrara)
MT Maplewood C2-8-7 (Codell)
MT Maplewood 2-8-7 (Niobrara)
MT Maplewood 3-8-7 (Niobrara)
MT Maplewood C3-8-7 (Codell)
MT Maplewood 4-8-7 (Niobrara)
MT Maplewood 5-8-7 (Niobrara)
MT Maplewood C4-8-7 (Codell)

Surface Location: NENW, Section 9, Township 5 North, Range 65 West
Weld County

Dear Mr. Lepore,

Extraction Oil and Gas is planning to drill the captioned horizontal wells in accordance with the provision of COGCC Rule 318A.e.

The proposed wellbore spacing unit consists of:

Sec. 8-5N-65W: N/2
Sec. 7-5N-65W: N/2

The spacing unit is a 640-acre wellbore spacing unit for both the Niobrara and Codell formations.

Extraction Oil and Gas hereby certifies to the Director that all Owners within the proposed spacing unit above were notified and 30 days have passed without objection.

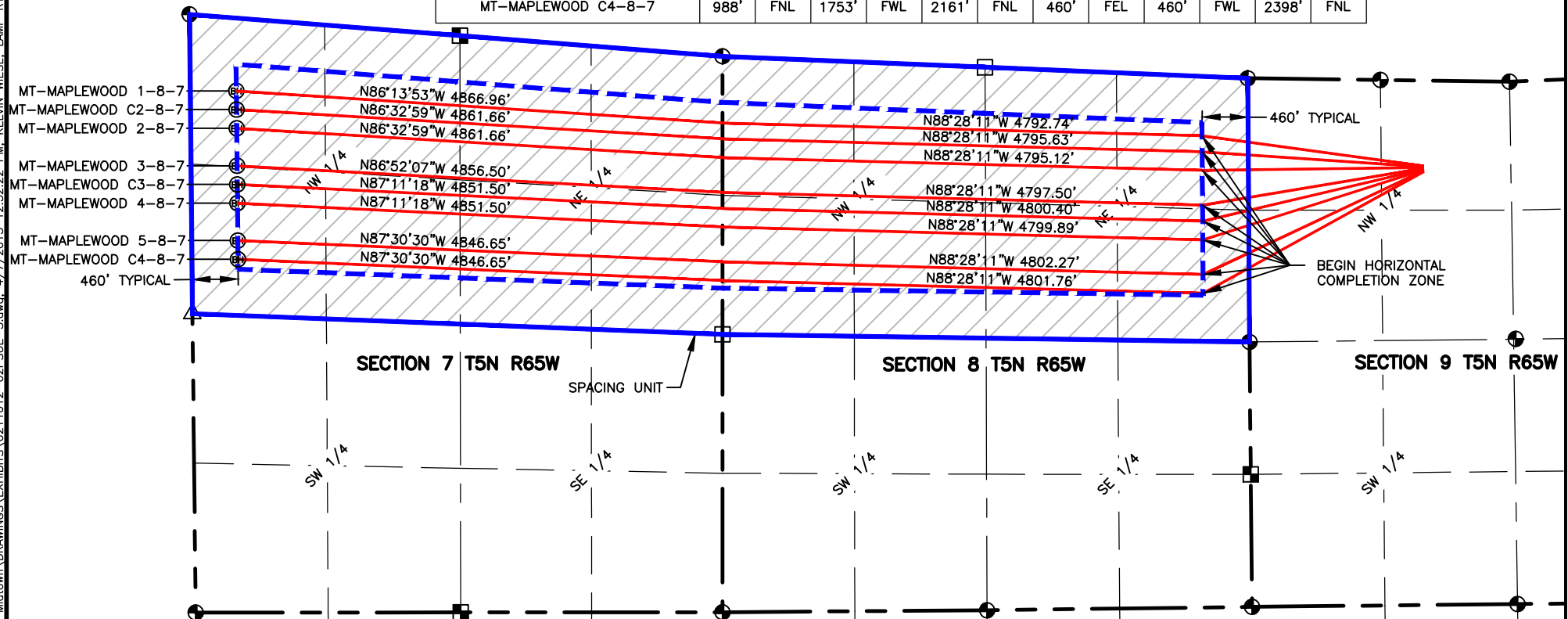
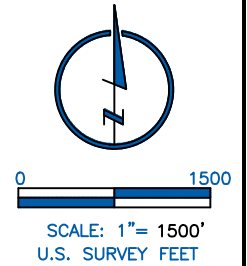
If you have any questions or issues regarding this permit, please contact Alyssa Andrews at 720-420-5749.

Respectfully,

Alyssa Andrews
Agent for Extraction Oil and Gas

NAME: MAPLEWOOD SPACING UNIT: N/2, SEC 7, T5N, R65W; & N/2, SEC 8, T5N, R65W, UNIT ACREAGE: 640

WELL NAME	SURFACE LOCATION				BEGIN HORIZONTAL COMPLETION ZONE				END HORIZONTAL COMPLETION ZONE			
	DIST.	DIR.	DIST.	DIR.	DIST.	DIR.	DIST.	DIR.	DIST.	DIR.	DIST.	DIR.
MT-MAPLEWOOD 1-8-7	876'	FNL	1751'	FWL	592'	FNL	460'	FEL	460'	FWL	724'	FNL
MT-MAPLEWOOD C2-8-7	892'	FNL	1752'	FWL	751'	FNL	460'	FEL	460'	FWL	910'	FNL
MT-MAPLEWOOD 2-8-7	908'	FNL	1752'	FWL	938'	FNL	460'	FEL	460'	FWL	1096'	FNL
MT-MAPLEWOOD 3-8-7	924'	FNL	1752'	FWL	1283'	FNL	460'	FEL	460'	FWL	1468'	FNL
MT-MAPLEWOOD C3-8-7	940'	FNL	1752'	FWL	1443'	FNL	460'	FEL	460'	FWL	1654'	FNL
MT-MAPLEWOOD 4-8-7	956'	FNL	1752'	FWL	1629'	FNL	460'	FEL	460'	FWL	1840'	FNL
MT-MAPLEWOOD 5-8-7	972'	FNL	1752'	FWL	1975'	FNL	460'	FEL	460'	FWL	2212'	FNL
MT-MAPLEWOOD C4-8-7	988'	FNL	1753'	FWL	2161'	FNL	460'	FEL	460'	FWL	2398'	FNL



LAMP RYNEARSON
& ASSOCIATES

4715 Innovation Drive 970.226.0342 | P
Fort Collins, CO 80525 970.226.0879 | F
www.LRA-Inc.com

Planned Spacing Unit Exhibit
Midtown Directional Project
Maplewood

- LEGEND**
- ⊕ ALIQUOT CORNER
 - ⊗ BOTTOM HOLE
 - COMPUTED ALIQUOT CORNER
 - SECTION LINE
 - - - QUARTER SECTION LINE
 - SIXTEENTH LINE

△ COMPUTED ALIQUOT CORNER FROM MONUMENT RECORDS
■ COMPUTED FROM GLO RECORDS

drawn by
JPM

date
4/7/15

cogcc id

project - task number
0210035.00-502

book and page

surface - location
NE/4,NW/4, SEC 9 T5N R65W

path\filename P:\Engineering\0210035 MRI Midtown\DRAWINGS\EXHIBITS\0211012-02PSUE-5.dwg