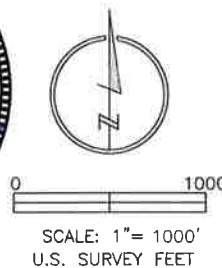
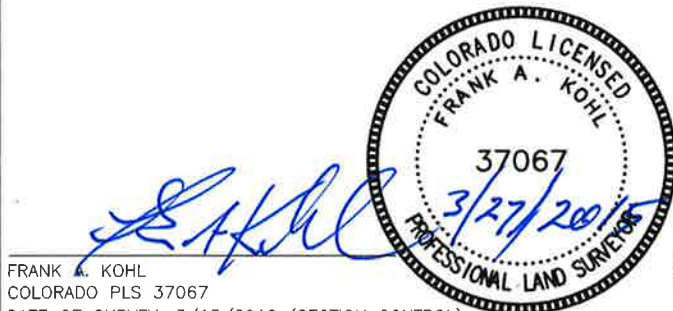


### LAND SURVEYOR'S CERTIFICATION

LAMP, RYNEARSON & ASSOCIATES, INC., OF FT. COLLINS, COLORADO HAS, IN ACCORDANCE WITH A REQUEST FROM DUSTIN DYK FOR EXTRACTION OIL AND GAS, DETERMINED THE SURFACE LOCATION OF THE WELL DESIGNATED AS MT-MAPLEWOOD C4-8-7 TO BE 988' FROM THE NORTH LINE AND 1753' FROM THE WEST LINE OF SECTION 9 TOWNSHIP 5 NORTH, RANGE 65 WEST OF THE 6TH P.M., WELD COUNTY, COLORADO.



- LEGEND**
- ALIQUOT CORNER
  - BOTTOM HOLE
  - COMPUTED ALIQUOT CORNER FROM GLO RECORDS
  - COMPUTED ALIQUOT CORNER FROM MONUMENT ACCESSORIES
  - A.C. ALUMINUM CAP
  - R.B. RANGE BOX



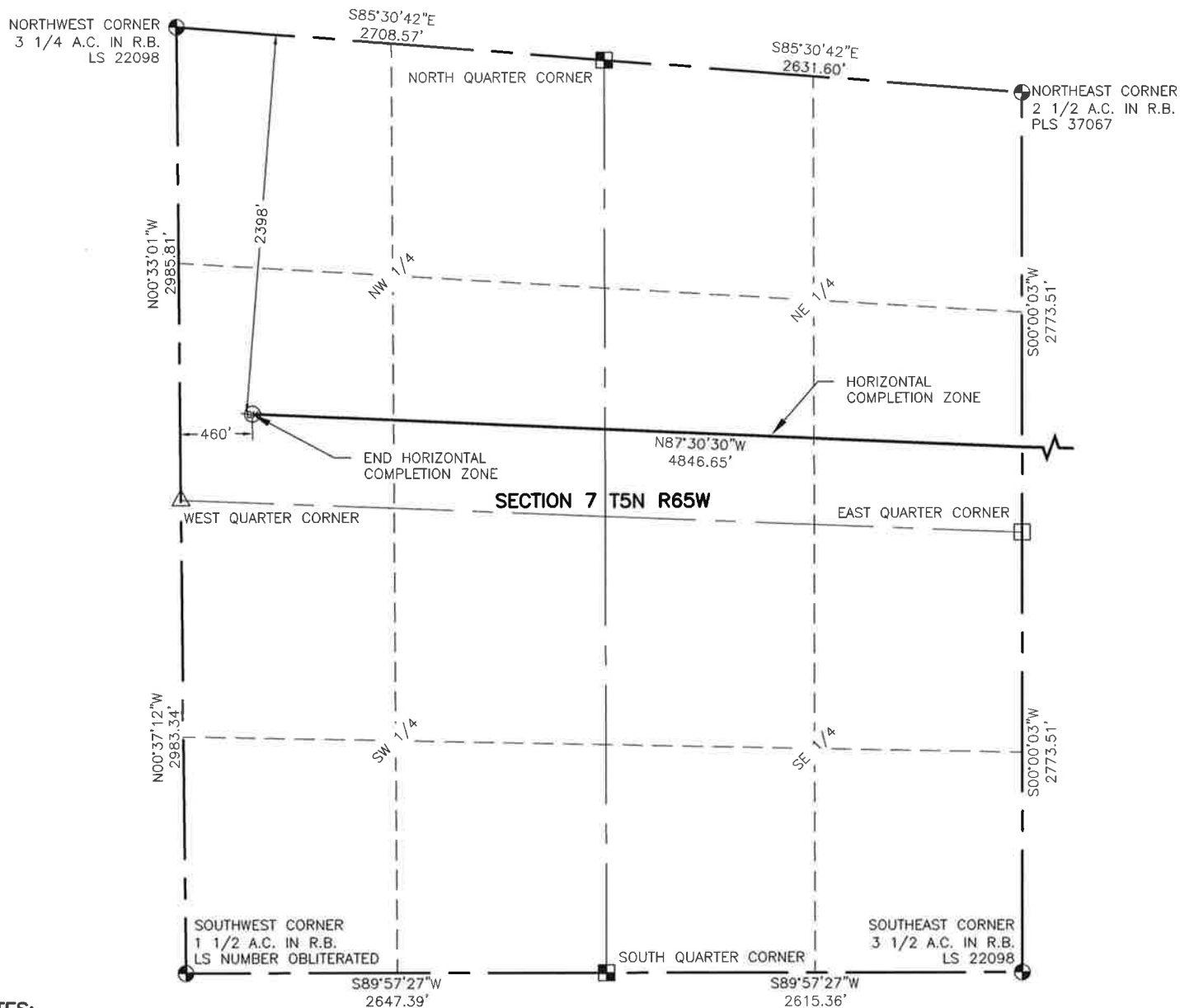
**LAMP RYNEARSON & ASSOCIATES**

4715 Innovation Drive 970.226.0342 | P  
Fort Collins, CO 80525 970.226.0879 | F  
www.LRA-Inc.com

Proposed Well Location Exhibit  
MT-MAPLEWOOD C4-8-7  
1 OF 3

drawn by	date	cogcc id	project - task number	book and page	surface - location
JPM	3/26/15		0210035.00-502	MR01/MR02	NE/4,NW/4, SEC 9 T5N R65W
path\filename P:\_Engineering\0210035 MR1 Midtown\DRAWINGS\EXHIBITS\0210035EXWP-00UOC.dwg					

path\filename P:\\_Engineering\0210035 MRI Midtown\DRAWINGS\EXHIBITS\0210035EXWP-00U1C.dwg



#### NOTES:

1. DISTANCES ARE MEASURED PERPENDICULAR TO NEAREST SECTION LINE AND ARE SHOWN ON THE SAME SIDE OF THE SECTION LINE WHERE THE WELL IS LOCATED.
2. THIS MAP DOES NOT REPRESENT A MONUMENTED BOUNDARY SURVEY. SIXTEENTH CORNER LOCATIONS ARE COMPUTED, UNLESS OTHERWISE NOTED.
3. BOTTOM HOLE LOCATIONS AND HORIZONTAL COMPLETION ZONE PROVIDED BY OTHERS.



SCALE: 1" = 1000'  
U.S. SURVEY FEET

#### LEGEND

- ALIQUOT CORNER
- BOTTOM HOLE
- COMPUTED ALIQUOT CORNER FROM GLO RECORDS
- COMPUTED ALIQUOT CORNER FROM MONUMENT ACCESSORIES
- COMPUTED ALIQUOT CORNER LOCATION
- A.C. ALUMINUM CAP
- R.B. RANGE BOX



**LAMP RYNEARSON  
& ASSOCIATES**

4715 Innovation Drive 970.226.0342 | P  
Fort Collins, CO 80525 970.226.0879 | F  
www.LRA-Inc.com

Proposed Well Location Exhibit  
MT-MAPLEWOOD C4-8-7  
3 OF 3

drawn by

JPM

date

3/26/15

cogcc id

project - task number

0210035.00-502

book and page

MR01/MR02

surface - location

NE/4,NW/4, SEC 9 T5N R65W

path\filename P:\\_Engineering\0210035 MRI Midtown\DRAWINGS\EXHIBITS\0210035EXWP-00U2C.dwg