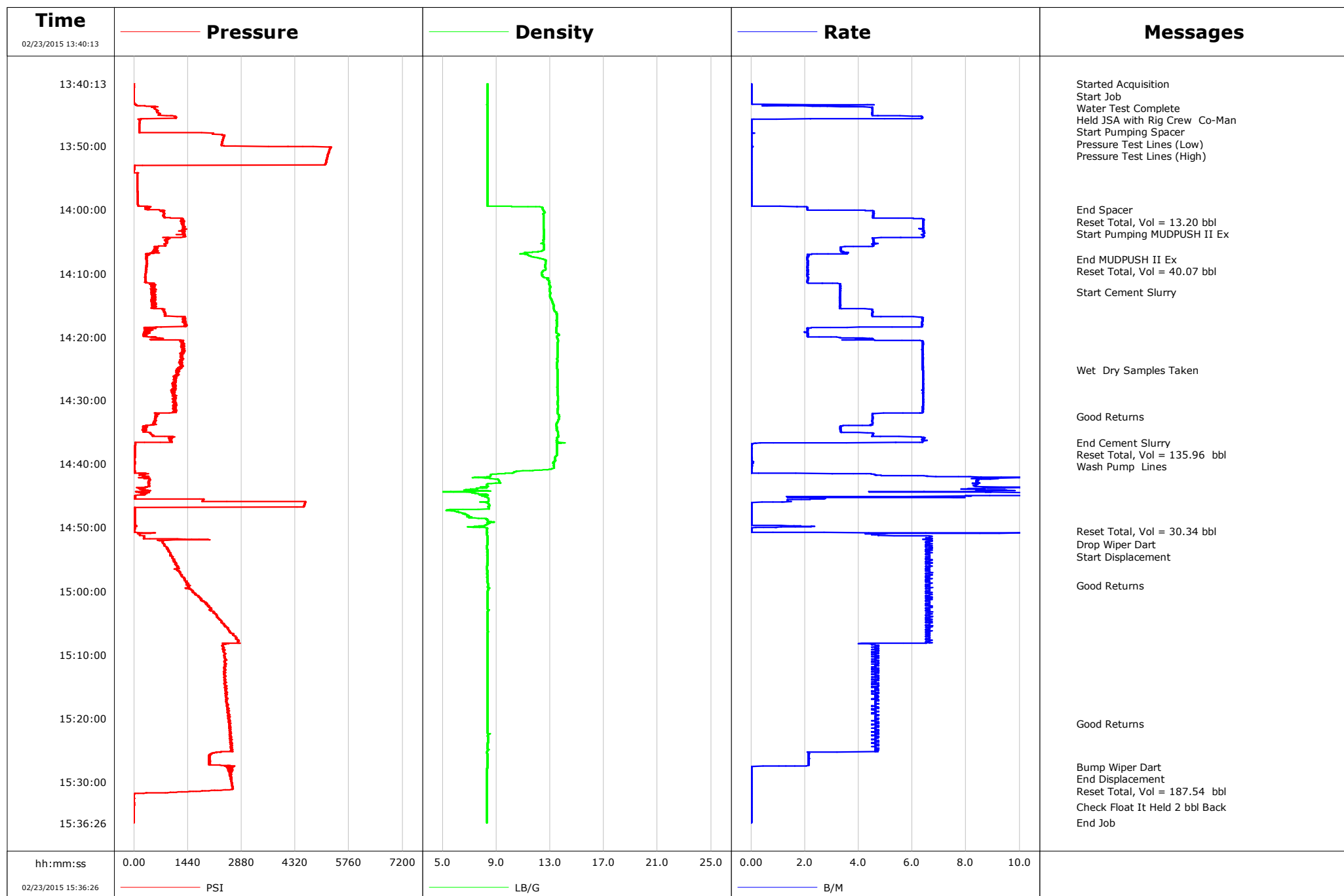


Well D8FO-00123
Field Wattenberg
Engineer Wayne Silvester/Paul Kroeger
Country United States

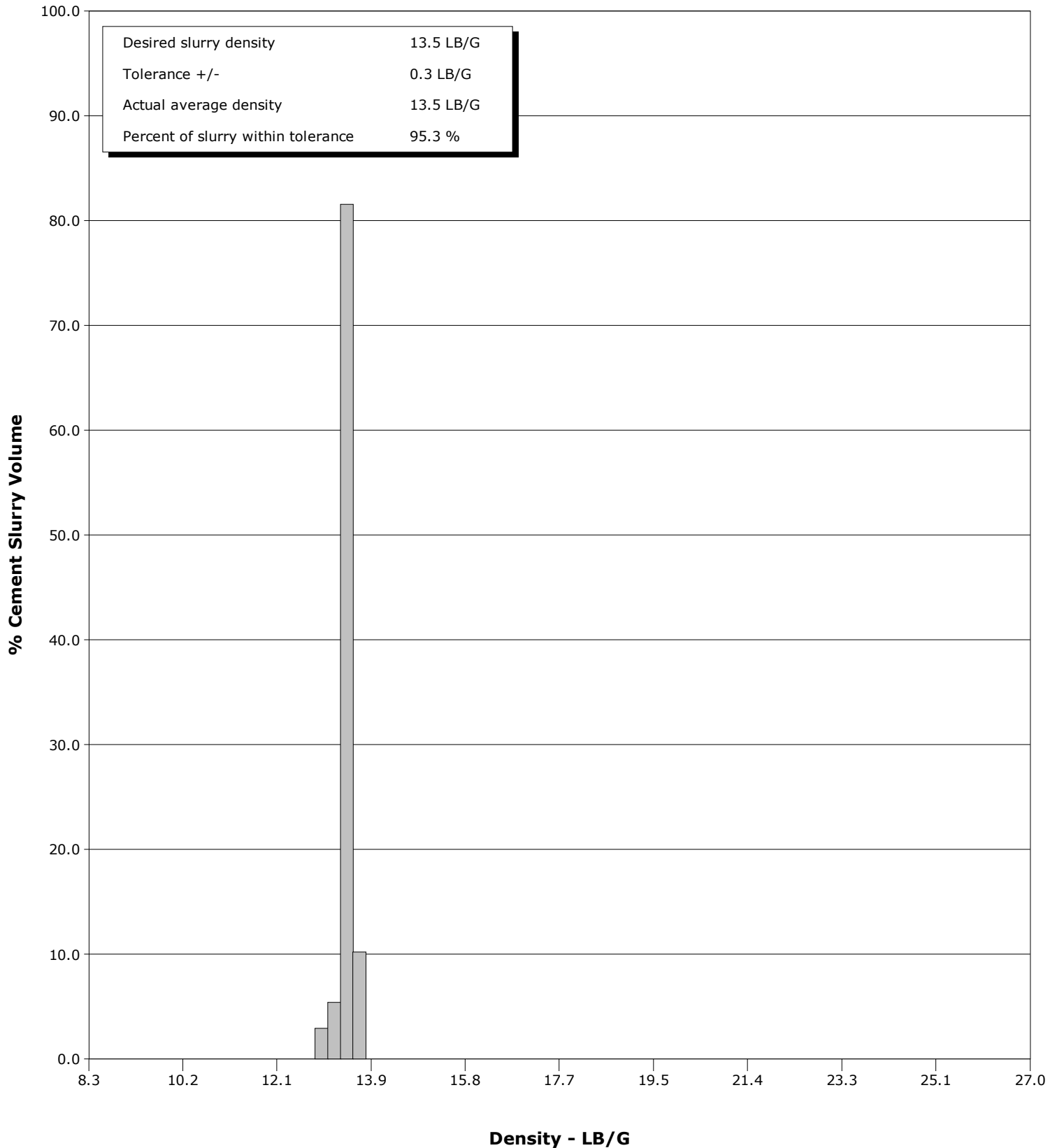
Client Encana
SIR No. D8FO-00123
Job Type Production
Job Date 02-23-2015



Well D8FO-00123
Field Wattenberg
Engineer Wayne Silvester/Paul Kroeger
Country United States

Client Encana
SIR No. D8FO-00123
Job Type Production
Job Date 02-23-2015

Cement Slurry - 02/23/2015 14:12:58 to 02/23/2015 14:36:34



Cementing Service Report

				Customer Encana			Job Number D8FO-00123	
Well D8FO-00123 3D-9H			Location (legal) 217304		Schlumberger Location Cheyenne		Job Start Feb/23/2015	
Field Wattenberg		Formation Name/Type shale		Deviation deg	Bit Size 6.1 in	Well MD 12569.0 ft		Well TVD 12574.0 ft
County Weld		State/Province Colorado		BHP 3032 psi	BHST 215 degF	BHCT 215 degF	Pore Press. Gradient lb/gal	
Well Master 0631548283		API/UWI 05123392710000						
Rig Name Patterson 272	Drilled For Oil	Service Via Land	Casing/ Liner					
			Depth, ft	Size, in	Weight, lb/ft	Grade	Thread	
Offshore Zone	Well Class New	Well Type Other	12574.0	4.5	11.6	N/A	N/A	
			0.0	0.0	0.0			
Drilling Fluid Type Bentonite		Max. Density 11.80 lb/gal	Plastic Viscosity cP	Tubing/Drill Pipe				
				T/D	Depth, ft	Size, in	Weight, lb/ft	Grade
Service Line Cementing	Job Type Production							
Max. Allowed Tub. Press psi	Max. Allowed Ann. Press 10000 psi	WH Connection 1502	Perforations/Open Hole					
			Top, ft	Bottom, ft	shot/ft	No. of Shots	Total Interval	
			ft	ft			ft	
			ft	ft			Diameter	
			ft	ft			in	
			Treat Down Casing	Displacement 187.6 bbl	Packer Type	Packer Depth ft		
			Tubing Vol. bbl	Casing Vol. 188.0 bbl	Annular Vol. bbl	Openhole Vol. bbl		
Casing/Tubing Secured <input checked="" type="checkbox"/>			1 Hole Vol. Circulated prior to Cement <input checked="" type="checkbox"/>			Casing Tools		
						Squeeze Job		
Lift Pressure 2000 psi			Shoe Type Float			Squeeze Type		
Pipe Rotated <input type="checkbox"/>			Pipe Reciprocated <input type="checkbox"/>			Shoe Depth 12574.0 ft		
						Tool Type		
No. Centralizers		Top Plugs 1	Bottom Plugs	Stage Tool Type		Tool Depth ft		
Cement Head Type 3rd Party			Stage Tool Depth ft		Tail Pipe Size in			
Job Scheduled For Feb/23/2015		Arrived on Location Feb/23/2015	Leave Location Feb/23/2015	Collar Type Float		Tail Pipe Depth ft		
				Collar Depth 12569.0 ft		Sqz. Total Vol. bbl		
Date	Time 24-hr clock	Treating Pressure PSI	Flow Rate B/M	Density LB/G	Volume BBL	Message		
02/23/2015	13:40:13	0	0.0	8.34	0.0	Started Acquisition		
02/23/2015	13:41:07	-0	0.0	8.34	0.0	Start Job		
02/23/2015	13:42:24	-1	0.0	8.34	0.1	Water Test Complete		
02/23/2015	13:43:28	36	0.5	8.34	0.1	Start Pumping Spacer		
02/23/2015	13:45:14	890	4.5	8.33	7.2			
02/23/2015	13:49:12	2370	0.0	8.33	10.4	Pressure Test Lines (Low)		
02/23/2015	13:50:15	5268	0.0	8.33	10.4			
02/23/2015	13:50:20	5259	0.0	8.33	10.4	Pressure Test Lines (High)		
02/23/2015	13:55:16	84	0.0	8.33	10.4			
02/23/2015	14:00:00	350	2.1	12.45	11.4	End Spacer		
02/23/2015	14:00:17	750	4.6	12.55	12.4			
02/23/2015	14:00:28	785	4.6	12.60	13.2	Reset Total, Vol = 13.20 bbl		
02/23/2015	14:02:04	1279	6.4	12.51	21.8	Start Pumping MUDPUSH II Ex		
02/23/2015	14:05:18	889	4.6	12.42	40.9			
02/23/2015	14:07:49	332	2.1	12.51	48.9	End MUDPUSH II Ex		
02/23/2015	14:08:28	348	2.1	12.66	50.3	Reset Total, Vol = 40.07 bbl		
02/23/2015	14:10:19	300	2.1	12.41	54.2			
02/23/2015	14:12:58	478	3.3	12.97	61.4	Start Cement Slurry		
02/23/2015	14:15:20	566	3.3	13.26	69.3			
02/23/2015	14:20:21	729	4.5	13.56	90.8			
02/23/2015	14:25:16	1196	6.4	13.53	121.7	Wet Dry Samples Taken		

Well			Field		Job Start		Customer		Job Number	
D8FO-00123 3D-9H			Wattenberg		Feb/23/2015		Encana		D8FO-00123	
Date	Time 24-hr clock	Treating Pressure PSI	Flow Rate B/M	Density LB/G	Volume BBL	Message				
02/23/2015	14:30:23	1125	6.4	13.56	154.4					
02/23/2015	14:32:30	621	4.5	13.66	167.0	Good Returns				
02/23/2015	14:35:24	475	4.5	13.58	178.8					
02/23/2015	14:36:34	1031	6.4	13.55	185.7	End Cement Slurry				
02/23/2015	14:36:37	47	5.4	13.45	186.0	Reset Total, Vol = 135.96 bbl				
02/23/2015	14:36:39	38	3.5	14.10	186.2	Wash Pump Lines				
02/23/2015	14:40:25	13	0.0	13.29	186.3					
02/23/2015	14:45:26	25	2.7	8.41	221.1					
02/23/2015	14:50:27	12	0.0	8.32	222.6					
02/23/2015	14:50:33	10	0.0	8.32	222.6	Reset Total, Vol = 30.34 bbl				
02/23/2015	14:52:37	821	6.6	8.34	234.2	Drop Wiper Dart				
02/23/2015	14:52:38	821	6.5	8.33	234.3	Start Displacement				
02/23/2015	14:55:28	1085	6.5	8.32	253.0					
02/23/2015	14:59:09	1488	6.5	8.36	277.2	Good Returns				
02/23/2015	15:00:29	1641	6.6	8.35	286.0					
02/23/2015	15:05:30	2439	6.6	8.34	319.0					
02/23/2015	15:10:31	2433	4.7	8.33	347.5					
02/23/2015	15:15:32	2445	4.6	8.33	370.7					
02/23/2015	15:20:33	2535	4.7	8.33	394.0					
02/23/2015	15:20:49	2574	4.7	8.32	395.2	Good Returns				
02/23/2015	15:25:34	2079	2.2	8.32	416.5					
02/23/2015	15:27:40	2584	0.0	8.32	420.6	Bump Wiper Dart				
02/23/2015	15:27:41	2654	0.0	8.32	420.6	End Displacement				
02/23/2015	15:28:54	2587	0.0	8.30	420.6	Reset Total, Vol = 187.54 bbl				
02/23/2015	15:30:35	2634	0.0	8.31	420.6					
02/23/2015	15:33:54	-0	0.0	8.31	420.6	Check Float It Held 2 bbl Back				
02/23/2015	15:35:36	-0	0.0	8.31	420.6					

Post Job Summary

Average Pump Rates, bbl/min					Volume of Fluid Injected, bbl						
Slurry 4.8	N2	Mud 4.7	Maximum Rate 20.0		Total Slurry 136.0	Mud 40.2	Spacer 10.4	N2			
Treating Pressure Summary, psi					Breakdown Fluid						
Maximum 5276	Final -1	Average 1331	Bump Plug to 2550	Breakdown	Type	Volume bbl		Density lb/gal			
Avg. N2 Percent %	Designed Slurry Volume 131.8 bbl		Displacement 187.7 bbl	Mix Water Temp 78 degF	Cement Circulated to Surface? <input type="checkbox"/>		Volume bbl				
					Washed Thru Perfs <input type="checkbox"/>		To ft				
Customer or Authorized Representative Norm McCreary			Schlumberger Supervisor Wayne Silvester/Paul Kroeger			Circulation Lost <input type="checkbox"/>	Job Completed <input checked="" type="checkbox"/>				
						-	-				