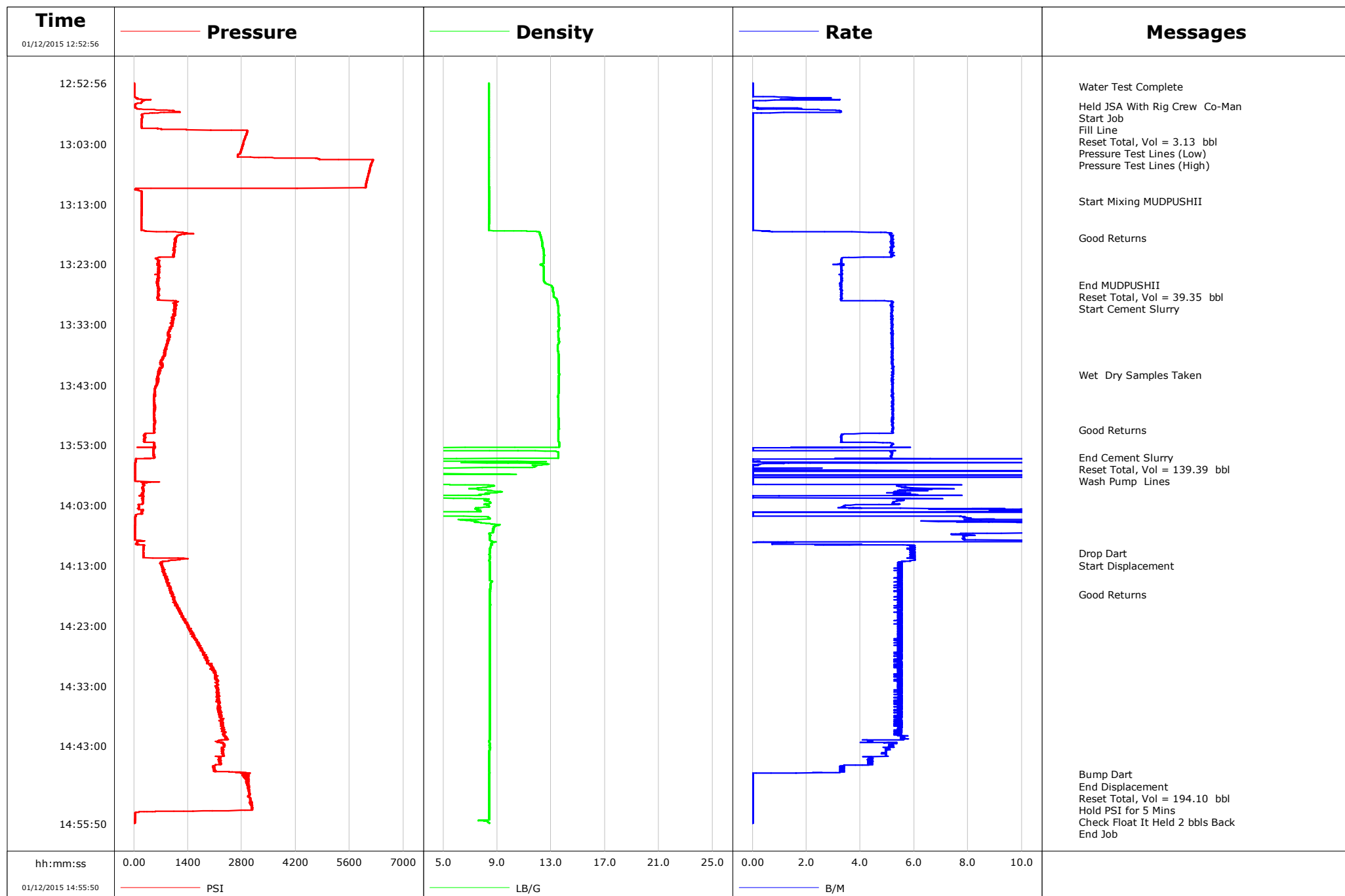


Well Sprague 3AA 9H-N267
Field DJ
Engineer Wayne Silvester/Paul Kroeger
Country United States

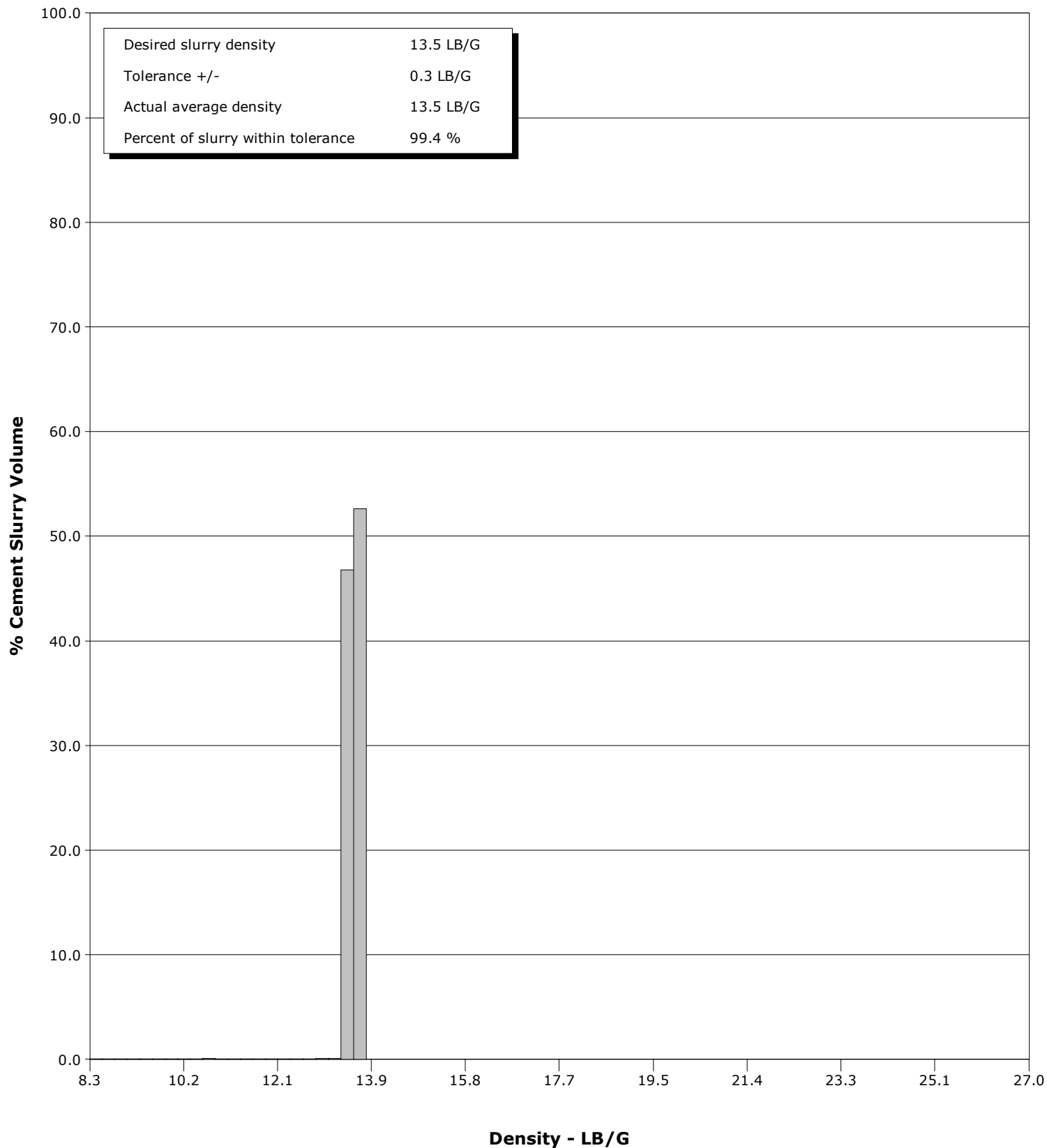
Client Encana
SIR No. D5VO-00220
Job Type Production
Job Date 01-12-2015



Well Sprauge 3AA 9H-N267
Field DJ
Engineer Wayne Silvester/Paul Kroeger
Country United States

Client Encana
SIR No. D5VO-00220
Job Type Production
Job Date 01-12-2015

Cement Slurry - 01/12/2015 13:28:38 to 01/12/2015 13:55:00



Cementing Service Report

				Customer Encana			Job Number D5VO-00220			
Well Sprague 3AA 9H-N267 3AA 9H-N267			Location (legal) 217304		Schlumberger Location Cheyenne		Job Start Jan/12/2015			
Field DJ		Formation Name/Type Shale		Deviation deg	Bit Size 6.1 in	Well MD 12973.5 ft		Well TVD 12975.7 ft		
County Weld		State/Province Colorado		BHP 3109 psi	BHST 215 degF	BHCT 215 degF	Pore Press. Gradient lb/gal			
Well Master 0631589555		API/UWI 0512340292								
Rig Name Patterson 272	Drilled For Oil and Gas		Service Via Land	Casing/Liner						
				Depth, ft	Size, in	Weight, lb/ft	Grade	Thread		
Offshore Zone	Well Class New		Well Type	12973.5	4.5	13.5	P110	N/A		
				0.0	0.0	0.0				
Drilling Fluid Type Bentonite		Max. Density 11.50 lb/gal	Plastic Viscosity 15.000 cP	Tubing/Drill Pipe						
				T/D	Depth, ft	Size, in	Weight, lb/ft	Grade		
Service Line Cementing	Job Type Production									
Max. Allowed Tub. Press psi	Max. Allowed Ann. Press 4900 psi		WH Connection 1502	Perforations/Open Hole						
				Top, ft	Bottom, ft	shot/ft	No. of Shots	Total Interval ft		
Service Instructions Cement Slurry 455sks yield=1.68=135bbls use 15 lbs of D800 In First 10bbls of Displacement				ft	ft					
				ft	ft			Diameter in		
				ft	ft					
				Treat Down Casing		Displacement 193.6 bbl		Packer Type		Packer Depth ft
				Tubing Vol. bbl		Casing Vol. 193.7 bbl		Annular Vol. bbl		Openhole Vol. bbl
Casing/Tubing Secured <input checked="" type="checkbox"/>		1 Hole Vol. Circulated prior to Cement <input checked="" type="checkbox"/>		Casing Tools			Squeeze Job			
Lift Pressure 3109 psi			Shoe Type Float		Squeeze Type					
Pipe Rotated <input type="checkbox"/>		Pipe Reciprocated <input type="checkbox"/>		Shoe Depth 12973.5 ft			Tool Type			
No. Centralizers		Top Plugs 3	Bottom Plugs	Stage Tool Type			Tool Depth ft			
Cement Head Type 3rd Party			Stage Tool Depth ft			Tail Pipe Size in				
Job Scheduled For Jan/12/2015		Arrived on Location Jan/12/2015	Leave Location Jan/12/2015	Collar Type Float			Tail Pipe Depth ft			
				Collar Depth 12971.9 ft			Sqz. Total Vol. bbl			
Date	Time 24-hr clock	Treating Pressure PSI	Flow Rate B/M	Density LB/G	Volume BBL	Message				
01/12/2015	12:52:56	10	0.0	8.38	0.0	Started Acquisition				
01/12/2015	12:53:26	5	0.0	8.38	0.0	Water Test Complete				
01/12/2015	12:56:41	29	0.0	8.38	1.2	Held JSA With Rig Crew Co-Man				
01/12/2015	12:57:09	77	1.8	8.38	1.3	Start Job				
01/12/2015	12:57:28	921	3.1	8.38	1.9	Fill Line				
01/12/2015	12:57:57	387	0.0	8.38	3.1					
01/12/2015	12:58:41	207	0.0	8.38	3.1	Reset Total, Vol = 3.13 bbl				
01/12/2015	13:01:27	2924	0.0	8.38	3.1	Pressure Test Lines (Low)				
01/12/2015	13:02:58	2833	0.0	8.38	3.1					
01/12/2015	13:06:26	6160	0.0	8.38	3.1	Pressure Test Lines (High)				
01/12/2015	13:07:59	6091	0.0	8.39	3.1					
01/12/2015	13:12:29	196	0.0	8.39	3.1	Start Mixing MUDPUSHII				
01/12/2015	13:13:00	197	0.0	8.39	3.1					
01/12/2015	13:18:01	1322	5.1	12.17	5.1					
01/12/2015	13:18:34	1112	5.2	12.24	7.9	Good Returns				
01/12/2015	13:23:02	643	3.2	12.21	28.9					
01/12/2015	13:26:26	619	3.3	12.84	40.1	End MUDPUSHII				
01/12/2015	13:27:10	644	3.3	13.13	42.5	Reset Total, Vol = 39.35 bbl				
01/12/2015	13:28:03	617	3.3	13.21	45.4					
01/12/2015	13:28:38	617	3.3	13.34	47.3	Start Cement Slurry				
01/12/2015	13:33:04	999	5.2	13.56	69.4					

Well			Field		Job Start		Customer		Job Number	
Sprague 3AA 9H-N267 3AA 9H-N267			DJ		Jan/12/2015		Encana		D5VO-00220	
Date	Time 24-hr clock	Treating Pressure PSI	Flow Rate B/M	Density LB/G	Volume BBL	Message				
01/12/2015	13:41:19	623	5.2	13.60	112.2	Wet Dry Samples Taken				
01/12/2015	13:43:06	594	5.2	13.57	121.5					
01/12/2015	13:48:07	534	5.2	13.53	147.5					
01/12/2015	13:50:28	522	5.2	13.53	159.8	Good Returns				
01/12/2015	13:53:08	522	5.2	13.61	170.8					
01/12/2015	13:55:00	506	5.2	13.52	177.9	End Cement Slurry				
01/12/2015	13:55:02	542	5.1	13.52	178.1	Reset Total, Vol = 139.39 bbl				
01/12/2015	13:55:36	43	0.0	0.01	180.5	Wash Pump Lines				
01/12/2015	13:58:09	33	0.0	0.23	185.7					
01/12/2015	14:03:10	123	3.4	8.39	203.5					
01/12/2015	14:08:11	23	7.8	8.43	255.5					
01/12/2015	14:11:00	240	6.0	8.43	274.3	Drop Dart				
01/12/2015	14:11:02	246	5.9	8.43	274.5	Start Displacement				
01/12/2015	14:13:12	722	5.5	8.44	287.0					
01/12/2015	14:17:50	1008	5.5	8.45	312.3	Good Returns				
01/12/2015	14:18:13	1054	5.4	8.45	314.4					
01/12/2015	14:23:14	1389	5.5	8.45	341.9					
01/12/2015	14:28:15	1898	5.5	8.44	369.4					
01/12/2015	14:33:16	2136	5.4	8.45	396.7					
01/12/2015	14:38:17	2269	5.5	8.44	424.1					
01/12/2015	14:43:18	2293	4.9	8.47	450.7					
01/12/2015	14:47:41	2892	0.0	8.41	468.4	Bump Dart				
01/12/2015	14:47:42	2843	0.0	8.41	468.4	End Displacement				
01/12/2015	14:48:10	2935	0.0	8.40	468.4	Reset Total, Vol = 194.10 bbl				
01/12/2015	14:48:19	2865	0.0	8.40	468.4					
01/12/2015	14:49:55	2973	0.0	8.39	468.4	Hold PSI for 5 Mins				
01/12/2015	14:53:20	3082	0.0	8.39	468.4					
01/12/2015	14:54:28	28	0.0	8.39	468.4	Check Float It Held 2 bbls Back				

Post Job Summary

Average Pump Rates, bbl/min					Volume of Fluid Injected, bbl						
Slurry 5.4	N2	Mud	Maximum Rate 6.0		Total Slurry 139.0	Mud 39.0	Spacer 0.2	N2			
Treating Pressure Summary, psi					Breakdown Fluid						
Maximum 6213	Final 25	Average 1275	Bump Plug to 3500	Breakdown	Type	Volume bbl		Density lb/gal			
Avg. N2 Percent %	Designed Slurry Volume 135.0 bbl		Displacement 194.1 bbl	Mix Water Temp 65 degF	Cement Circulated to Surface? <input checked="" type="checkbox"/>		Volume bbl				
					Washed Thru Perfs <input type="checkbox"/>		To ft				
Customer or Authorized Representative Caleb Hobbs			Schlumberger Supervisor Wayne Silvester/Paul Kroeger			Circulation Lost <input type="checkbox"/>	Job Completed <input checked="" type="checkbox"/>				
						-	-				