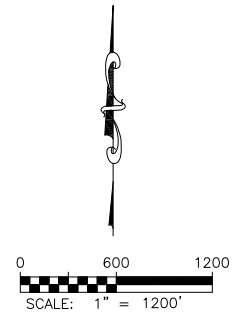
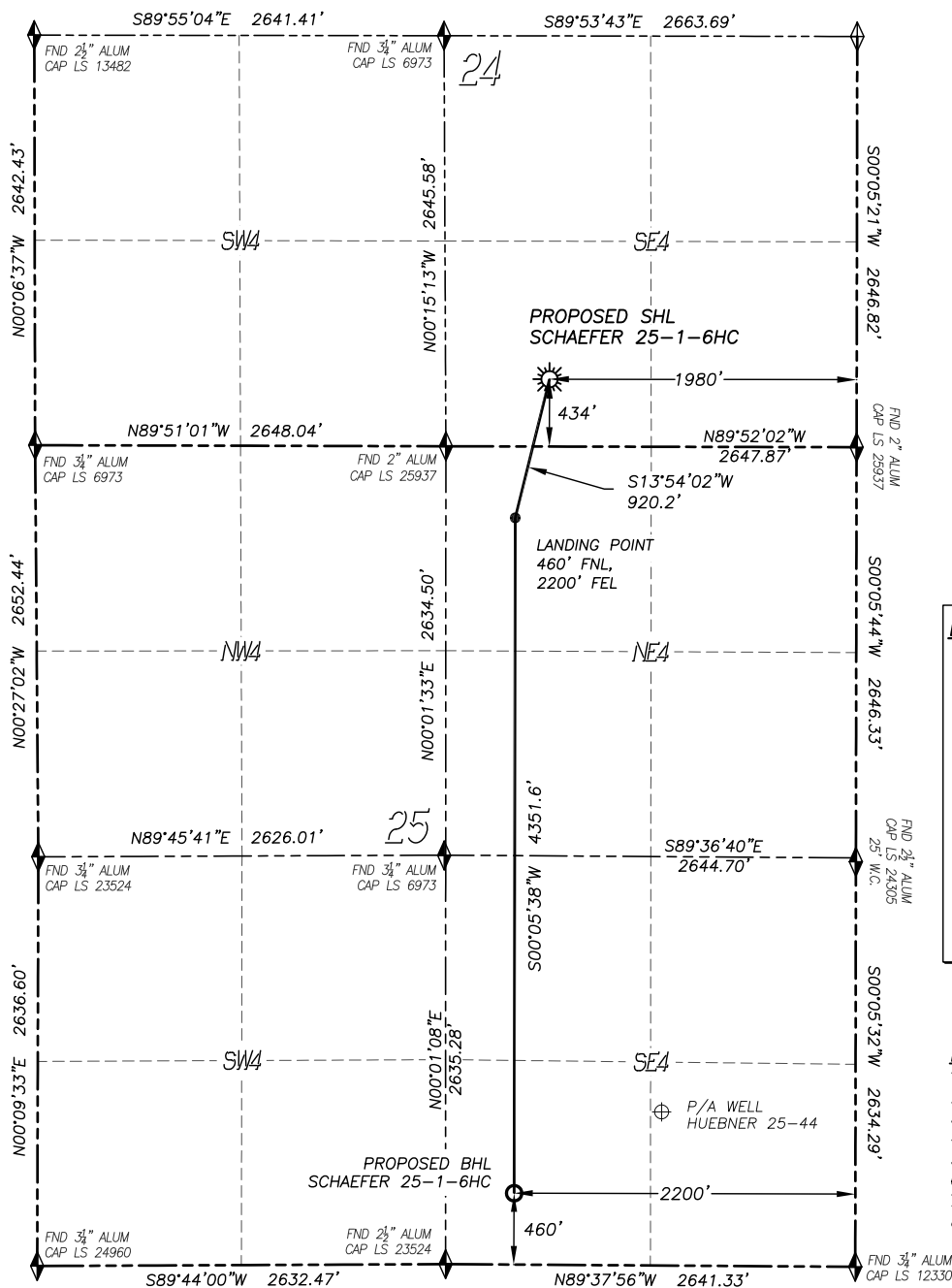


# WELL LOCATION CERTIFICATE

## SCHAEFER 25-1-6HC

SECTION 24, TOWNSHIP 1 SOUTH, RANGE 67 WEST OF THE 6TH P.M.

**LEGEND**

- ◆ FOUND MONUMENT
- ◇ CALCULATED POSITION
- ☼ PROPOSED WELL
- BOTTOM HOLE
- ⊗ ABANDONED WELL
- ⊗ EXISTING WELL

**NAD 83 LATITUDE AND LONGITUDE****SURFACE LOCATION:**

LATITUDE: N39.94451°  
 LONGITUDE: W104.83490°  
 ELEVATION: 5022'  
 PDOP: 1.7  
 QTR/QTR: SW4/SE4

**LANDING POINT:**

LATITUDE: N39.94206°  
 LONGITUDE: W104.83569°

**BOTTOM HOLE:**

LATITUDE: N39.93012°  
 LONGITUDE: W104.83571°

**NEAREST CULTURAL ITEMS:**

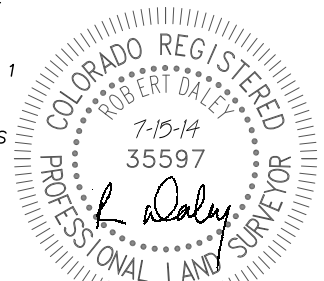
- |                                |           |
|--------------------------------|-----------|
| 1. BUILDING:                   | 516'± SE  |
| 2. BUILDING UNIT:              | 590'± SW  |
| 3. HIGH OCC. BLD. UNIT:        | 5280'±    |
| 4. DES. OUTSIDE ACTIVITY AREA: | 5280'±    |
| 5. PUBLIC ROAD:                | 415'± S   |
| 6. ABOVE GROUND UTILITY:       | 449'± S   |
| 7. RAILROAD:                   | 1007'± NW |
| 8. PROPERTY LINE:              | 434'± S   |

IN ACCORDANCE WITH A REQUEST FROM WARD PETROLEUM, DALEY LAND SURVEYING, INC. HAS DETERMINED THE SURFACE LOCATION OF THE SCHAEFER 25-1-6HC WELL TO BE 434' FSL, 1980' FEL, AS MEASURED AT NINETY (90) DEGREES FROM THE SECTION LINES OF SECTION 24, TOWNSHIP 1 SOUTH, RANGE 67 WEST, AND THE BOTTOM HOLE LOCATION TO BE 460' FSL, 2200' FEL, AS MEASURED AT NINETY (90) DEGREES FROM THE SECTION LINES OF SECTION 25, TOWNSHIP 1 SOUTH, RANGE 67 WEST OF THE 6TH PRINCIPAL MERIDIAN, ADAMS COUNTY, COLORADO.

I HEREBY CERTIFY THAT THIS WELL LOCATION CERTIFICATE WAS PREPARED BY ME OR UNDER MY DIRECT SUPERVISION, THAT THE WORK WAS COMPLETED ON 4/11/2014 FOR AND ON BEHALF OF WARD PETROLEUM, AND THAT THIS MAP DOES NOT REPRESENT A BOUNDARY SURVEY, IT IS NOT A LAND SURVEY PLAT OR AN IMPROVEMENT SURVEY PLAT AND IT IS NOT TO BE RELIED UPON FOR THE ESTABLISHMENT OF FENCE, BUILDING OR OTHER FUTURE IMPROVEMENT LINES.

**NOTES:**

- 1) BEARINGS FOR THIS MAP ARE ASSUMED AND BASED UPON GPS OBSERVATIONS MADE BETWEEN MONUMENTS LOCATED AT THE SOUTHEAST CORNER AND SOUTH QUARTER CORNER OF SECTION 24, T.1S., R.67W.
- 2) HORIZONTAL DATUM IS NAD83.
- 3) VERTICAL DATUM IS NAVD88 AND ORIGINATES FROM THE LOCAL C.O.R.S. NETWORK, UTILIZING THE GEOID12A MODEL.
- 4) SEE LOCATION DRAWING FOR VISIBLE IMPROVEMENTS WITHIN 500' OF PROPOSED DISTURBED AREA.
- 5) SURFACE USE: AGRICULTURAL.
- 6) INST. OPERATOR: ROB DALEY



FOR AND ON BEHALF OF  
 DALEY LAND SURVEYING INC.,  
 Robert Daley, PLS 35597