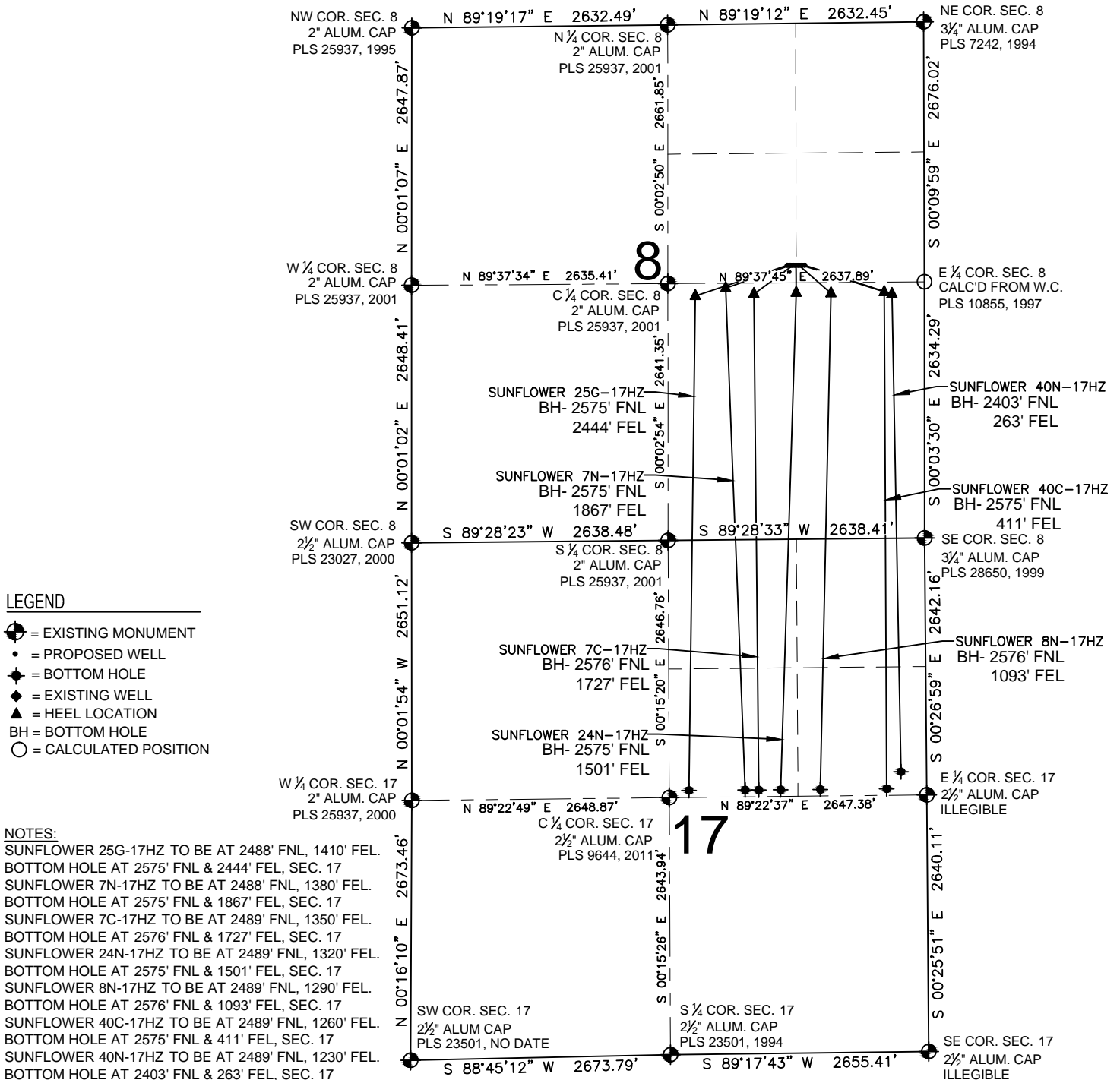


SUNFLOWER 24N-17HZ MULTI-WELL PLAN

SECTION 8, TOWNSHIP 2 NORTH, RANGE 65 WEST, 6TH P.M.



PREPARED BY:



KERR-MCGEE OIL & GAS ONSHORE LP

FIELD DATE:

11-07-14

DRAWING DATE:

04-28-15

SURFACE LOCATION:

SW 1/4, NE 1/4, SEC. 8, T2N, R65W, 6TH P.M.

SE 1/4, NE 1/4, SEC. 8, T2N, R65W, 6TH P.M.

WELD COUNTY, COLORADO

