

<div><div><div><div>RMWS</div><div>ROCKY MOUNTAIN WIRELINE SERVICE</div></div></div></div>										TEMPERATURE CCL LOG				
Company WPX ENERGY														
Well RU 444-7														
Field RULISON														
County GARFIELD State COLORADO														
Location:					API # : 05-045-22511-00			Other Services						
					LAT. 39.45484			N/A						
					LONG. -107.81080									
SEC 7 TWP 7S RGE 93W														
Permanent Datum GL					Elevation		K.B.							
Log Measured From KB					Ft Above PD		D.F.							
Drilling Measured From KB							G.L.							
Date 05-02-2015														
Run Number ONE														
Depth Driller 10030'														
Present Depth Driller N/A														
Depth Logger 9969'														
Bottom Logged Interval 9968'														
Top Log Interval SURFACE														
Fluid Level FULL														
Type Fluid WATER														
Max. Recorded Temp. 239 Deg F														
Estimated Cement Top 3923'														
Equipment Number 212														
Location GRAND JCT.														
Recorded By FERNANDEZ					INGRAM									
Witnessed By MR. HARTL														
Borehole Record					Casing Record									
Run Number		Bit	From	To	Size	Weight	From	To						
ONE														
TWO														

<<< Fold Here >>>

All interpretations are opinions based on inferences from electrical or other measurements and we cannot and do not guarantee the accuracy or correctness of any interpretation, and we shall not, except in the case of gross or willful negligence on our part, be liable or responsible for any loss, costs, damages, or expenses incurred or sustained by anyone resulting from any interpretation made by any of our officers, agents or employees. These interpretations are also subject to our general terms and conditions set out in our current Price Schedule.

WARRIOR 7.0 SOFTWARE - Comments

NOTE: WAS NO LOG TO CORRELATE WITH

SHORT JOINT: 6332' TO 6355'

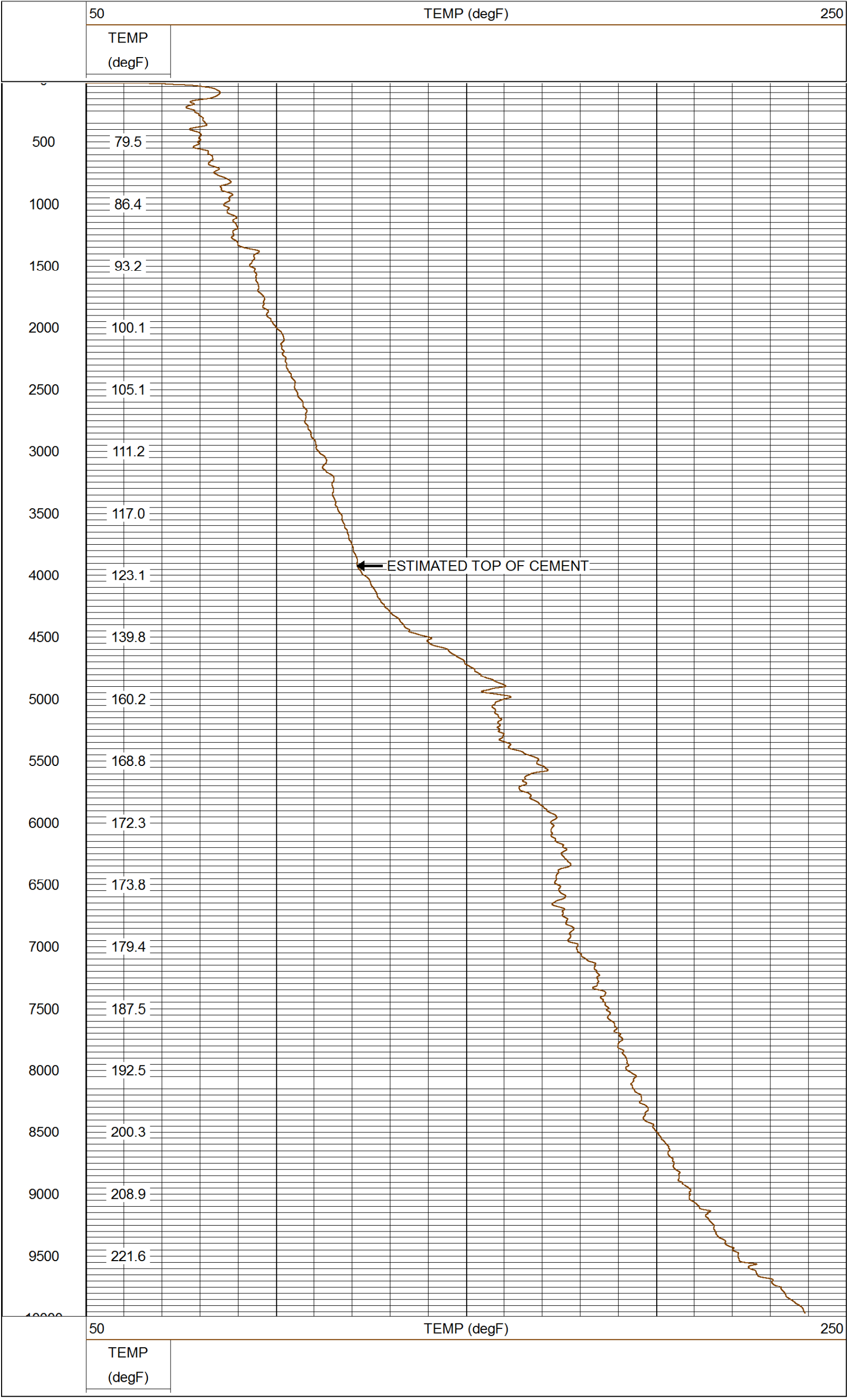
CASING PSI = STATIC

MAIN PASS 5" = 100'



QUICKLOOK PASS

Database File: 050215_wpx_ru_444_7.db
Dataset Pathname: main/pass2
Presentation Format: rmtemp_q
Dataset Creation: Sat May 02 10:12:48 2015 by Calc SCH 120430
Charted by: Depth in Feet scaled 1:10000



<div><div><div>RMWS</div><div>ROCKY MOUNTAIN WIRELINE SERVICE</div></div></div>		Company	WPX ENERGY
		Well	RU 444-7
		Field	RULISON
		County	GARFIELD
		State	COLORADO