

LEGEND:

 **PROPOSED LOCATION**

EOG RESOURCES, INC.

FOX CREEK 25 SWSW
SW 1/4 SW 1/4, SECTION 25, T12N, R63W, 6th P.M.
WELD COUNTY, COLORADO



UELS, LLC
 Corporate Office * 85 South 200 East
 Vernal, UT 84078 * (435) 789-1017



DRAWN BY: C.M.F.

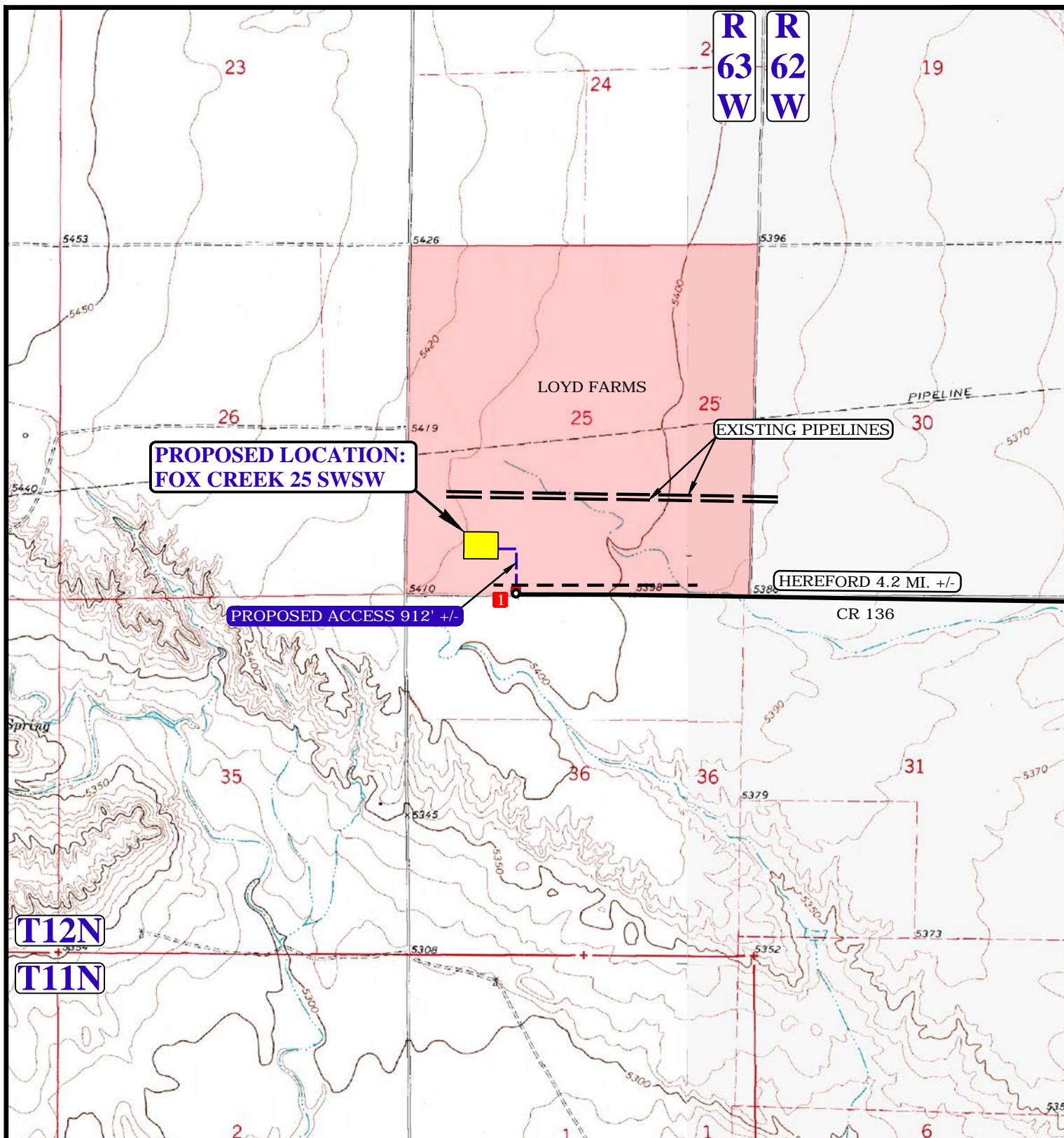
DATE DRAWN: 05-04-15

SCALE: 1:100,000

REVISED: 00-00-00

ACCESS ROAD MAP

TOPO A



NOTE: PARCEL DATA SHOWN HAS BEEN OBTAINED FROM VARIOUS SOURCES AND SHOULD BE USED FOR MAPPING, GRAPHIC AND PLANNING PURPOSES ONLY. NO WARRANTY IS MADE BY UINTAH ENGINEERING AND LAND SURVEYING (UELS) FOR ACCURACY OF THE PARCEL DATA.

LEGEND:

- EXISTING ROAD
- - - EXISTING WATER PIPELINE
- - - EXISTING PIPELINE
- - - PROPOSED ROAD
- 1 18" CULVERT REQUIRED

EOG RESOURCES, INC.

FOX CREEK 25 SWSW
SW 1/4 SW 1/4, SECTION 25, T12N, R63W, 6th P.M.
WELD COUNTY, COLORADO

DRAWN BY: C.M.F.

DATE DRAWN: 05-04-15

SCALE: 1" = 2000'

REVISED: 00-00-00

ACCESS ROAD MAP

TOPO B



UELS, LLC
 Corporate Office * 85 South 200 East
 Vernal, UT 84078 * (435) 789-1017

