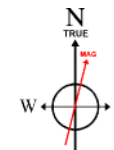
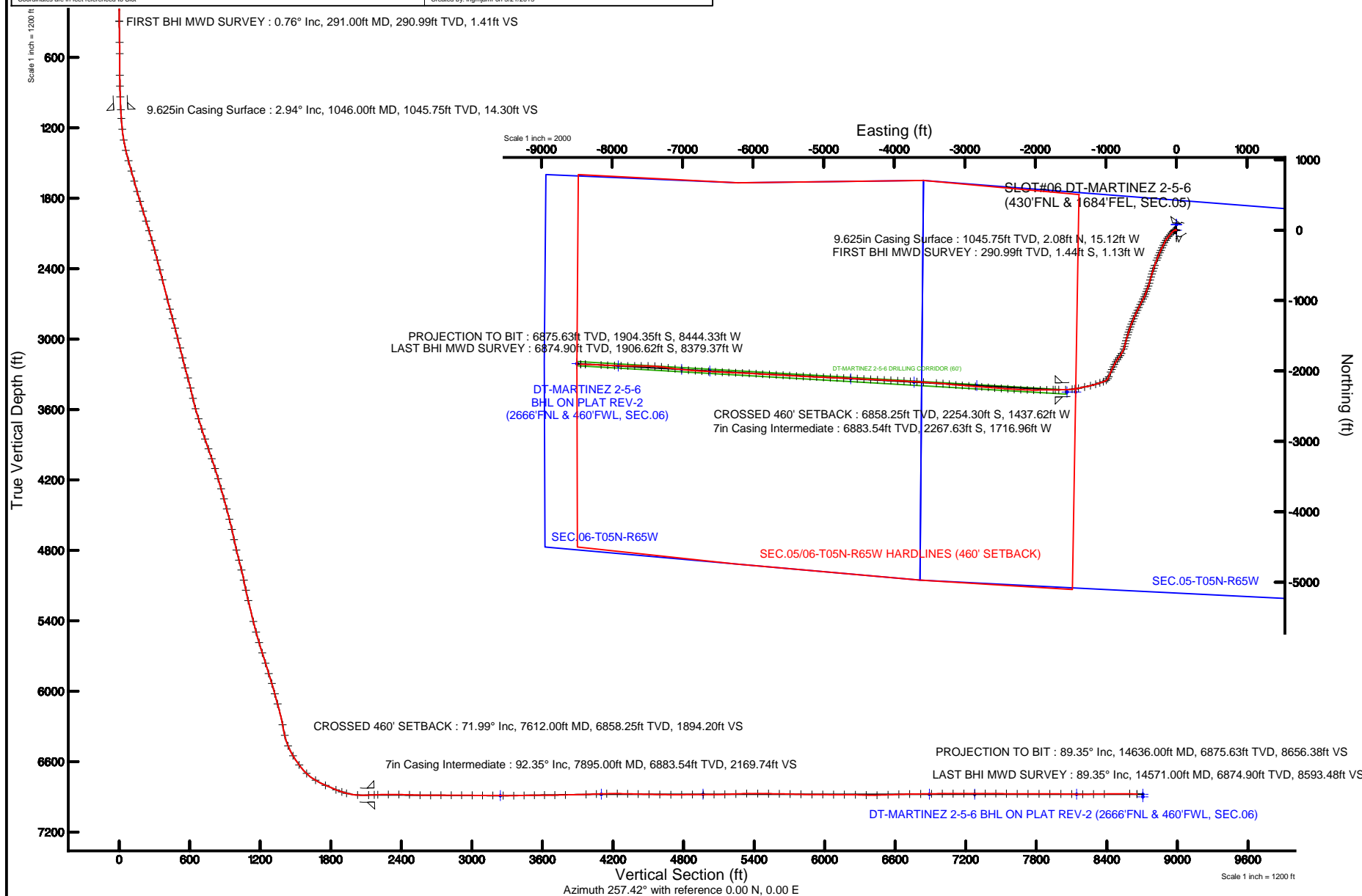


Location:	COLORADO	Slot:	SLOT#06 DT-MARTINEZ 2-5-6 (430°FNL & 1684°FEL, SEC.05)
Field:	WELD COUNTY (NAD83/TRUE NORTH)	Well:	DT-MARTINEZ 2-5-6
Facility:	SEC.05-T05N-R65W	Wellbore:	DT-MARTINEZ 2-5-6 PWB
Plot reference wellpath is DT-MARTINEZ 2-5-6 PWP (REV-C.0)			
True vertical depths are referenced to SAVANNA 802 (15KB) (RKB)		Grid System: NAD83 / Lambert Colorado SP, Northern Zone (501), US feet	
Measured depths are referenced to SAVANNA 802 (15KB) (RKB)		North Reference: True north	
SAVANNA 802 (15KB) (RKB) to Mean Sea Level: 4655 feet		Scale: True distance	
Mean Sea Level to Mud line (At Slot: SLOT#06 DT-MARTINEZ 2-5-6 (430°FNL & 1684°FEL, SEC.05)): 0 feet		Depths are in feet	
Coordinates are in feet referenced to Slot		Created by: ingmjmr on 5/21/2015	



BGGM (1945.0 to 2016.0) Dip: 66.95° Field: 52648.1 nT
Magnetic North is 8.43 degrees East of True North (at 3/12/2015)

To correct azimuth from Magnetic to True add 8.43 degrees





Actual Wellpath Report

DT-MARTINEZ 2-5-6 AWP

Page 1 of 8



REFERENCE WELLPATH IDENTIFICATION

Operator	EXTRACTION OIL & GAS	Slot	SLOT#06 DT-MARTINEZ 2-5-6 (430'FNL & 1684'FEL, SEC.05)
Area	COLORADO	Well	DT-MARTINEZ 2-5-6
Field	WELD COUNTY (NAD83/TRUE NORTH)	Wellbore	DT-MARTINEZ 2-5-6 AWB
Facility	SEC.05-T05N-R65W		

REPORT SETUP INFORMATION

Projection System	NAD83 / Lambert Colorado SP, Northern Zone (501), US feet	Software System	WellArchitect® 4.1.1
North Reference	True	User	Ingmjmr
Scale	0.999962	Report Generated	5/21/2015 at 1:44:25 PM
Convergence at slot	0.53° East	Database/Source file	Denver/DT-MARTINEZ_2-5-6_AWB.xml

WELLPATH LOCATION

	Local coordinates		Grid coordinates		Geographic coordinates	
	North[ft]	East[ft]	Easting[US ft]	Northing[US ft]	Latitude	Longitude
Slot Location	-182.16	228.27	3227218.03	1402469.57	40°26'07.116"N	104°41'01.428"W
Facility Reference Pt			3226988.10	1402649.61	40°26'08.916"N	104°41'04.380"W
Field Reference Pt			3185481.27	1419166.81	40°28'55.560"N	104°49'59.556"W

WELLPATH DATUM

Calculation method	Minimum curvature	SAVANNA 802 (15'KB) (RKB) to Facility Vertical Datum	4655.00ft
Horizontal Reference Pt	Slot	SAVANNA 802 (15'KB) (RKB) to Mean Sea Level	4655.00ft
Vertical Reference Pt	SAVANNA 802 (15'KB) (RKB)	SAVANNA 802 (15'KB) (RKB) to Mud Line at Slot (SLOT#06 DT-MARTINEZ 2-5-6 (430'FNL & 1684'FEL, SEC.05))	4655.00ft
MD Reference Pt	SAVANNA 802 (15'KB) (RKB)	Section Origin	N 0.00, E 0.00 ft
Field Vertical Reference	Mean Sea Level	Section Azimuth	257.42°



Actual Wellpath Report

DT-MARTINEZ 2-5-6 AWP

Page 2 of 8



REFERENCE WELLPATH IDENTIFICATION

Operator	EXTRACTION OIL & GAS	Slot	SLOT#06 DT-MARTINEZ 2-5-6 (430'FNL & 1684'FEL, SEC.05)
Area	COLORADO	Well	DT-MARTINEZ 2-5-6
Field	WELD COUNTY (NAD83/TRUE NORTH)	Wellbore	DT-MARTINEZ 2-5-6 AWP
Facility	SEC.05-T05N-R65W		

WELLPATH DATA (148 stations) † = interpolated/extrapolated station

MD [ft]	Inclination [°]	Azimuth [°]	TVD [ft]	Vert Sect [ft]	North [ft]	East [ft]	DLS [°/100ft]	Comments
0.00†	0.000	217.960	0.00	0.00	0.00	0.00	0.00	
15.00	0.000	217.960	15.00	0.00	0.00	0.00	0.00	
291.00	0.760	217.960	290.99	1.41	-1.44	-1.13	0.28	FIRST BHI MWD SURVEY
472.00	0.980	282.000	471.97	3.75	-2.07	-3.38	0.52	
567.00	1.290	330.480	566.96	4.80	-0.97	-4.70	1.03	
751.00	1.420	338.640	750.91	5.75	2.96	-6.55	0.13	
843.00	1.430	273.160	842.88	7.03	4.08	-8.11	1.68	
936.00	1.910	250.160	935.85	9.68	3.62	-10.73	0.88	
1120.00	3.630	251.270	1119.62	18.52	0.71	-19.13	0.94	
1213.00	6.500	244.610	1212.25	26.58	-2.49	-26.68	3.14	
1305.00	10.600	236.060	1303.21	39.54	-9.45	-38.41	4.65	
1397.00	14.920	226.340	1392.93	57.58	-22.36	-54.00	5.23	
1489.00	19.370	218.770	1480.83	79.65	-42.45	-72.14	5.40	
1582.00	20.140	219.180	1568.36	104.27	-66.88	-91.91	0.84	
1674.00	19.690	219.000	1654.85	128.86	-91.21	-111.67	0.49	
1766.00	19.780	218.720	1741.45	153.15	-115.40	-131.16	0.14	
1858.00	23.430	210.790	1826.99	177.87	-143.27	-150.27	5.07	
1951.00	26.710	206.450	1911.23	203.74	-177.88	-169.05	4.04	
2043.00	25.900	206.420	1993.70	229.41	-214.38	-187.20	0.88	
2135.00	25.860	205.290	2076.47	254.37	-250.52	-204.71	0.54	
2227.00	25.560	204.060	2159.36	278.54	-286.78	-221.38	0.67	
2319.00	25.090	203.430	2242.52	301.85	-322.80	-237.22	0.59	
2412.00	24.700	203.390	2326.88	324.86	-358.73	-252.78	0.42	
2504.00	24.320	201.310	2410.59	346.71	-394.02	-267.29	1.02	
2596.00	24.450	201.460	2494.38	367.94	-429.39	-281.14	0.16	
2780.00	25.910	199.000	2660.90	410.31	-502.85	-308.17	0.98	
2873.00	27.310	199.040	2744.05	432.14	-542.23	-321.74	1.51	
2965.00	27.300	198.230	2825.80	454.01	-582.22	-335.23	0.40	
3057.00	27.780	197.020	2907.37	475.41	-622.76	-348.10	0.80	
3153.00	28.560	196.060	2992.00	497.46	-666.20	-361.00	0.94	



Actual Wellpath Report

DT-MARTINEZ 2-5-6 AWP

Page 3 of 8



REFERENCE WELLPATH IDENTIFICATION

Operator	EXTRACTION OIL & GAS	Slot	SLOT#06 DT-MARTINEZ 2-5-6 (430'FNL & 1684'FEL, SEC.05)
Area	COLORADO	Well	DT-MARTINEZ 2-5-6
Field	WELD COUNTY (NAD83/TRUE NORTH)	Wellbore	DT-MARTINEZ 2-5-6 AWB
Facility	SEC.05-T05N-R65W		

WELLPATH DATA (148 stations)

MD [ft]	Inclination [°]	Azimuth [°]	TVD [ft]	Vert Sect [ft]	North [ft]	East [ft]	DLS [°/100ft]	Comments
3248.00	28.250	195.440	3075.56	518.91	-709.70	-373.27	0.45	
3344.00	27.860	193.260	3160.29	539.37	-753.43	-384.46	1.14	
3440.00	26.790	201.400	3245.60	561.24	-795.42	-397.50	4.05	
3536.00	25.890	200.690	3331.64	584.84	-835.17	-412.80	0.99	
3631.00	24.680	199.800	3417.53	606.84	-873.24	-426.85	1.34	
3727.00	23.060	199.290	3505.32	627.50	-909.84	-439.85	1.70	
3822.00	23.770	207.170	3592.52	649.58	-944.45	-454.74	3.38	
3918.00	25.340	208.720	3679.83	675.51	-979.68	-473.45	1.77	
4014.00	26.660	206.980	3766.12	702.79	-1016.89	-493.10	1.59	
4110.00	28.230	206.530	3851.31	730.83	-1056.40	-513.01	1.65	
4206.00	29.260	206.310	3935.48	759.89	-1097.75	-533.55	1.08	
4302.00	27.860	205.420	4019.79	788.43	-1139.04	-553.58	1.52	
4397.00	27.420	204.760	4103.95	815.36	-1178.95	-572.27	0.56	
4493.00	27.200	203.970	4189.25	841.84	-1219.07	-590.44	0.44	
4589.00	25.790	203.050	4275.17	867.08	-1258.34	-607.53	1.53	
4685.00	25.980	202.310	4361.54	891.27	-1297.01	-623.69	0.39	
4781.00	25.710	201.560	4447.94	914.99	-1335.83	-639.32	0.44	
4877.00	25.520	200.370	4534.50	937.92	-1374.58	-654.17	0.57	
4973.00	23.370	197.480	4621.89	958.71	-1412.13	-667.09	2.56	
5069.00	23.490	198.150	4709.98	978.03	-1448.47	-678.77	0.30	
5165.00	25.430	196.510	4797.36	997.83	-1486.42	-690.59	2.14	
5261.00	27.690	196.720	4883.22	1018.77	-1527.55	-702.87	2.36	
5357.00	28.460	195.410	4967.93	1040.42	-1570.96	-715.36	1.03	
5453.00	26.050	192.800	5053.26	1060.20	-1613.58	-726.11	2.80	
5549.00	24.150	195.420	5140.20	1078.46	-1653.07	-736.01	2.29	
5645.00	23.050	201.910	5228.18	1098.33	-1689.45	-748.24	2.94	
5836.00	20.360	208.840	5405.65	1141.50	-1753.26	-778.23	1.94	
5932.00	19.300	216.090	5495.97	1164.47	-1780.72	-795.64	2.79	
6028.00	22.120	217.350	5585.76	1190.22	-1807.91	-815.95	2.97	
6124.00	23.130	214.430	5674.38	1217.84	-1837.83	-837.58	1.57	



Actual Wellpath Report

DT-MARTINEZ 2-5-6 AWP

Page 4 of 8



REFERENCE WELLPATH IDENTIFICATION

Operator	EXTRACTION OIL & GAS	Slot	SLOT#06 DT-MARTINEZ 2-5-6 (430'FNL & 1684'FEL, SEC.05)
Area	COLORADO	Well	DT-MARTINEZ 2-5-6
Field	WELD COUNTY (NAD83/TRUE NORTH)	Wellbore	DT-MARTINEZ 2-5-6 AWP
Facility	SEC.05-T05N-R65W		

WELLPATH DATA (148 stations) † = interpolated/extrapolated station

MD [ft]	Inclination [°]	Azimuth [°]	TVD [ft]	Vert Sect [ft]	North [ft]	East [ft]	DLS [°/100ft]	Comments
6220.00	23.840	212.220	5762.42	1245.31	-1869.80	-858.58	1.18	
6316.00	25.710	206.140	5849.60	1272.01	-1904.92	-878.11	3.29	
6411.00	26.900	206.410	5934.76	1298.43	-1942.66	-896.75	1.26	
6507.00	23.730	205.380	6021.53	1323.98	-1979.58	-914.69	3.33	
6603.00	25.340	203.370	6108.86	1347.93	-2015.89	-931.12	1.89	
6794.00	18.870	203.130	6285.73	1390.00	-2081.88	-959.50	3.39	
6889.00	17.390	209.360	6376.02	1408.46	-2108.39	-972.49	2.57	
6985.00	24.430	235.850	6465.83	1436.61	-2132.12	-996.04	12.11	
7080.00	31.320	247.330	6549.82	1479.27	-2152.70	-1035.15	9.16	
7175.00	36.150	254.150	6628.83	1531.60	-2169.89	-1084.94	6.45	
7271.00	45.870	252.450	6701.19	1594.35	-2188.05	-1145.17	10.19	
7367.00	60.110	255.990	6758.84	1670.68	-2208.63	-1218.79	15.12	
7462.00	66.010	258.590	6801.86	1755.32	-2227.20	-1301.37	6.67	
7558.00	67.660	257.980	6839.63	1843.57	-2245.12	-1387.79	1.82	
7612.00†	71.989	261.094	6858.25	1894.20	-2254.30	-1437.62	9.67	CROSSED 460' SETBACK
7654.00	75.390	263.410	6870.05	1934.36	-2259.73	-1477.55	9.67	
7750.00	87.290	268.720	6884.49	2027.97	-2266.16	-1572.03	13.54	
7846.00	91.750	269.750	6885.29	2121.91	-2267.44	-1668.00	4.77	
7925.00	92.710	269.840	6882.22	2199.01	-2267.72	-1746.93	1.22	
8017.00	90.430	269.120	6879.70	2288.94	-2268.56	-1838.89	2.60	
8109.00	88.730	268.530	6880.37	2379.12	-2270.45	-1930.86	1.96	
8201.00	88.090	270.410	6882.92	2469.05	-2271.30	-2022.82	2.16	
8293.00	88.340	271.600	6885.79	2558.43	-2269.68	-2114.76	1.32	
8386.00	90.060	273.690	6887.09	2648.15	-2265.39	-2207.64	2.91	
8478.00	90.280	272.820	6886.81	2736.65	-2260.17	-2299.49	0.98	
8570.00	90.280	274.420	6886.37	2824.99	-2254.36	-2391.31	1.74	
8662.00	89.600	274.170	6886.46	2913.03	-2247.47	-2483.05	0.79	
8755.00	89.410	274.440	6887.26	3002.02	-2240.49	-2575.78	0.35	
8847.00	89.850	274.600	6887.86	3089.95	-2233.24	-2667.49	0.51	
8939.00	89.780	273.500	6888.16	3178.09	-2226.74	-2759.26	1.20	



Actual Wellpath Report

DT-MARTINEZ 2-5-6 AWP

Page 5 of 8



REFERENCE WELLPATH IDENTIFICATION

Operator	EXTRACTION OIL & GAS	Slot	SLOT#06 DT-MARTINEZ 2-5-6 (430'FNL & 1684'FEL, SEC.05)
Area	COLORADO	Well	DT-MARTINEZ 2-5-6
Field	WELD COUNTY (NAD83/TRUE NORTH)	Wellbore	DT-MARTINEZ 2-5-6 AWB
Facility	SEC.05-T05N-R65W		

WELLPATH DATA (148 stations)

MD [ft]	Inclination [°]	Azimuth [°]	TVD [ft]	Vert Sect [ft]	North [ft]	East [ft]	DLS [°/100ft]	Comments
9031.00	88.980	274.550	6889.15	3266.25	-2220.28	-2851.03	1.43	
9124.00	90.250	274.590	6889.78	3355.11	-2212.87	-2943.73	1.37	
9216.00	91.320	274.890	6888.52	3442.93	-2205.27	-3035.40	1.21	
9308.00	91.260	274.340	6886.44	3530.79	-2197.87	-3127.08	0.60	
9400.00	89.820	276.260	6885.58	3618.33	-2189.38	-3218.68	2.61	
9492.00	90.490	275.090	6885.33	3705.70	-2180.28	-3310.22	1.47	
9585.00	91.230	274.110	6883.93	3794.54	-2172.82	-3402.91	1.32	
9769.00	91.750	273.920	6879.15	3970.81	-2159.94	-3586.40	0.30	
9861.00	92.000	273.780	6876.14	4059.01	-2153.77	-3678.14	0.31	
9953.00	91.410	272.800	6873.40	4147.46	-2148.49	-3769.95	1.24	
10046.00	89.260	273.400	6872.86	4236.99	-2143.46	-3862.80	2.40	
10136.00	88.760	272.680	6874.41	4323.65	-2138.69	-3952.66	0.97	
10230.00	88.790	272.930	6876.42	4414.26	-2134.09	-4046.53	0.27	
10326.00	88.860	272.750	6878.39	4506.78	-2129.33	-4142.39	0.20	
10421.00	88.830	273.170	6880.31	4598.29	-2124.43	-4237.24	0.44	
10517.00	89.500	271.670	6881.70	4691.00	-2120.38	-4333.14	1.71	
10613.00	90.640	273.320	6881.59	4783.69	-2116.20	-4429.05	2.09	
10709.00	90.240	273.300	6880.85	4876.02	-2110.66	-4524.88	0.42	
10804.00	89.960	273.050	6880.68	4967.45	-2105.39	-4619.74	0.40	
10900.00	89.900	271.560	6880.80	5060.22	-2101.53	-4715.66	1.55	
10995.00	91.910	272.380	6879.30	5152.16	-2098.27	-4810.58	2.29	
11091.00	92.860	272.380	6875.31	5244.82	-2094.28	-4906.42	0.99	
11187.00	90.490	272.290	6872.50	5337.54	-2090.38	-5002.29	2.47	
11283.00	89.470	272.440	6872.53	5430.29	-2086.41	-5098.21	1.07	
11379.00	89.870	272.830	6873.09	5522.92	-2082.00	-5194.10	0.58	
11474.00	88.730	273.250	6874.25	5614.40	-2076.96	-5288.96	1.28	
11570.00	88.580	273.380	6876.50	5706.71	-2071.41	-5384.77	0.21	
11666.00	88.480	273.540	6878.96	5798.94	-2065.62	-5480.57	0.20	
11762.00	89.810	273.120	6880.40	5891.25	-2060.05	-5576.39	1.45	
11858.00	89.470	272.850	6881.00	5983.72	-2055.05	-5672.26	0.45	



Actual Wellpath Report

DT-MARTINEZ 2-5-6 AWP

Page 6 of 8



REFERENCE WELLPATH IDENTIFICATION

Operator	EXTRACTION OIL & GAS	Slot	SLOT#06 DT-MARTINEZ 2-5-6 (430'FNL & 1684'FEL, SEC.05)
Area	COLORADO	Well	DT-MARTINEZ 2-5-6
Field	WELD COUNTY (NAD83/TRUE NORTH)	Wellbore	DT-MARTINEZ 2-5-6 AWP
Facility	SEC.05-T05N-R65W		

WELLPATH DATA (148 stations)

MD [ft]	Inclination [°]	Azimuth [°]	TVD [ft]	Vert Sect [ft]	North [ft]	East [ft]	DLS [°/100ft]	Comments
11954.00	90.000	273.050	6881.44	6076.21	-2050.11	-5768.13	0.59	
12050.00	90.120	272.860	6881.34	6168.70	-2045.16	-5864.00	0.23	
12146.00	88.460	273.960	6882.53	6260.98	-2039.45	-5959.82	2.07	
12242.00	88.150	272.740	6885.37	6353.25	-2033.84	-6055.61	1.31	
12338.00	91.480	272.250	6885.68	6445.93	-2029.66	-6151.51	3.51	
12434.00	91.910	272.380	6882.84	6538.66	-2025.79	-6247.39	0.47	
12530.00	92.340	272.500	6879.28	6631.32	-2021.70	-6343.23	0.47	
12626.00	90.680	272.970	6876.75	6723.87	-2017.12	-6439.09	1.80	
12722.00	90.860	272.850	6875.46	6816.37	-2012.25	-6534.95	0.23	
12818.00	91.050	272.950	6873.86	6908.88	-2007.39	-6630.82	0.22	
12913.00	89.850	273.010	6873.12	7000.39	-2002.46	-6725.69	1.26	
13009.00	90.250	273.960	6873.03	7092.64	-1996.62	-6821.51	1.07	
13105.00	89.880	275.240	6872.92	7184.35	-1988.92	-6917.20	1.39	
13201.00	90.250	276.100	6872.81	7275.52	-1979.44	-7012.72	0.98	
13297.00	90.030	277.090	6872.58	7366.19	-1968.41	-7108.09	1.06	
13393.00	89.690	278.510	6872.81	7456.17	-1955.38	-7203.20	1.52	
13489.00	89.480	276.580	6873.51	7546.30	-1942.78	-7298.36	2.02	
13584.00	90.120	273.800	6873.84	7636.76	-1934.19	-7392.96	3.00	
13680.00	89.590	270.990	6874.09	7729.49	-1930.17	-7488.86	2.98	
13776.00	89.500	270.060	6874.85	7822.98	-1929.29	-7584.86	0.97	
13871.00	90.270	269.310	6875.04	7915.81	-1929.82	-7679.85	1.13	
13967.00	89.260	271.710	6875.43	8009.31	-1928.96	-7775.84	2.71	
14062.00	88.920	271.390	6876.94	8101.42	-1926.39	-7870.79	0.49	
14158.00	90.120	272.140	6877.74	8194.42	-1923.44	-7966.74	1.47	
14253.00	90.730	272.710	6877.04	8286.18	-1919.42	-8061.65	0.88	
14348.00	91.010	272.400	6875.60	8377.87	-1915.18	-8156.55	0.44	
14571.00	89.350	272.000	6874.90	8593.48	-1906.62	-8379.37	0.77	LAST BHI MWD SURVEY
14636.00	89.350	272.000	6875.63	8656.38	-1904.35	-8444.33	0.00	PROJECTION TO BIT



Actual Wellpath Report

DT-MARTINEZ 2-5-6 AWP

Page 7 of 8



REFERENCE WELLPATH IDENTIFICATION

Operator	EXTRACTION OIL & GAS	Slot	SLOT#06 DT-MARTINEZ 2-5-6 (430'FNL & 1684'FEL, SEC.05)
Area	COLORADO	Well	DT-MARTINEZ 2-5-6
Field	WELD COUNTY (NAD83/TRUE NORTH)	Wellbore	DT-MARTINEZ 2-5-6 AWB
Facility	SEC.05-T05N-R65W		

HOLE & CASING SECTIONS - Ref Wellbore: DT-MARTINEZ 2-5-6 AWB Ref Wellpath: DT-MARTINEZ 2-5-6 AWP

String/Diameter	Start MD [ft]	End MD [ft]	Interval [ft]	Start TVD [ft]	End TVD [ft]	Start N/S [ft]	Start E/W [ft]	End N/S [ft]	End E/W [ft]
9.625in Casing Surface	15.00	1046.00	1031.00	15.00	1045.75	0.00	0.00	2.08	-15.12
8.75in Open Hole	1046.00	7994.00	6948.00	1045.75	6879.98	2.08	-15.12	-2268.24	-1815.89
7in Casing Intermediate	15.00	7895.00	7880.00	15.00	6883.54	0.00	0.00	-2267.63	-1716.96
6in Open Hole	7994.00	14636.00	6642.00	6879.98	6875.63	-2268.24	-1815.89	-1904.35	-8444.33

TARGETS

Name	TVD [ft]	North [ft]	East [ft]	Grid East [US ft]	Grid North [US ft]	Latitude	Longitude	Shape
SEC.05-T05N-R65W	0.00	80.15	0.00	3227217.29	1402549.71	40°26'07.908"N	104°41'01.428"W	polygon
SEC.06-T05N-R65W	0.00	80.15	0.00	3227217.29	1402549.71	40°26'07.908"N	104°41'01.428"W	polygon
DT-MARTINEZ 2-5-6 BHL ON PLAT REV-2 (2666'FNL & 460'FWL, SEC.06)	6878.00	-1896.61	-8496.70	3218739.49	1400494.90	40°25'48.360"N	104°42'51.300"W	point
DT-MARTINEZ 2-5-6 TARGET 3	6878.00	-2158.68	-3719.02	3223519.19	1400276.83	40°25'45.782"N	104°41'49.519"W	point
DT-MARTINEZ 2-5-6 TARGET 4	6878.00	-2109.39	-4617.67	3222620.16	1400317.84	40°25'46.268"N	104°42'01.139"W	point
DT-MARTINEZ 2-5-6 TARGET 5	6878.00	-1999.85	-6614.67	3220622.31	1400408.99	40°25'47.346"N	104°42'26.963"W	point
DT-MARTINEZ 2-5-6 TARGET 6	6878.00	-1977.94	-7014.07	3220222.74	1400427.23	40°25'47.561"N	104°42'32.128"W	point
DT-MARTINEZ 2-5-6 TARGET 7	6878.00	-1928.65	-7912.72	3219323.71	1400468.24	40°25'48.045"N	104°42'43.748"W	point
DT-MARTINEZ 2-5-6 TARGET 2	6890.00	-2207.97	-2829.37	3224409.22	1400235.73	40°25'45.296"N	104°41'38.015"W	point
DT-MARTINEZ 2-5-6 BHL ON PLAT REV-1 (2666'FNL & 460'FWL, SEC.06)	6900.00	-1896.61	-8496.70	3218739.49	1400494.90	40°25'48.360"N	104°42'51.300"W	point
DT-MARTINEZ 2-5-6 DRILLING CORRIDOR (60')	6900.00	0.00	0.00	3227218.03	1402469.57	40°26'07.116"N	104°41'01.428"W	polygon
DT-MARTINEZ 2-5-6 LANDING POINT	6900.00	-2298.78	-1428.20	3225811.10	1400157.83	40°25'44.400"N	104°41'19.896"W	point

TARGETS

Name	TVD [ft]	North [ft]	East [ft]	Grid East [US ft]	Grid North [US ft]	Latitude	Longitude	Shape
DT-MARTINEZ 2-5-6 LANDING POINT REV-2	6900.00	-2298.78	-1550.00	3225689.32	1400156.71	40°25'44.400"N	104°41'21.471"W	point
SEC.05/06-T05N-R65W HARDLINES (460' SETBACK)	7090.00	80.15	0.00	3227217.29	1402549.71	40°26'07.908"N	104°41'01.428"W	polygon

WELLPATH COMPOSITION - Ref Wellbore: DT-MARTINEZ 2-5-6 AWB Ref Wellpath: DT-MARTINEZ 2-5-6 AWP				
Start MD [ft]	End MD [ft]	Positional Uncertainty Model	Log Name/Comment	Wellbore
15.00	936.00	NaviTrak (Standard)	BHI MWD/NAVITRAK (STD) 13.5" HOLE <291-936>	DT-MARTINEZ 2-5-6 AWB
936.00	7846.00	NaviTrak (Standard)	BHI MWD/NAVITRAK (STD) 8.75" HOLE <1120-7846>	DT-MARTINEZ 2-5-6 AWB
7846.00	14571.00	NaviTrak (Standard)	BHI MWD/NAVITRAK (STD) 6.125" HOLE <7925-14571>	DT-MARTINEZ 2-5-6 AWB
14571.00	14636.00	Blind Drilling (std)	Projection to bit	DT-MARTINEZ 2-5-6 AWB



Actual Wellpath Report

DT-MARTINEZ 2-5-6 AWP

Page 8 of 8



REFERENCE WELLPATH IDENTIFICATION

Operator	EXTRACTION OIL & GAS	Slot	SLOT#06 DT-MARTINEZ 2-5-6 (430'FNL & 1684'FEL, SEC.05)
Area	COLORADO	Well	DT-MARTINEZ 2-5-6
Field	WELD COUNTY (NAD83/TRUE NORTH)	Wellbore	DT-MARTINEZ 2-5-6 AWB
Facility	SEC.05-T05N-R65W		

WELLPATH COMMENTS

MD [ft]	Inclination [°]	Azimuth [°]	TVD [ft]	Comment
291.00	0.760	217.960	290.99	FIRST BHI MWD SURVEY
7612.00	71.989	261.094	6858.25	CROSSED 460' SETBACK
14571.00	89.350	272.000	6874.90	LAST BHI MWD SURVEY
14636.00	89.350	272.000	6875.63	PROJECTION TO BIT