



# Empirica

Scale: 5" / 100'  
Measured Depth Log

**Well Name** DT Martinez 5-5-6

**Location** Sec.5-T05N-R65W

**State** Colorado

**Country** USA

**API Number** 05-123-41032-0C

**Region** DJ Basin

**Spud Date** 3/10/2015

**Surface Coordinates** SHL: 446°FNL, 1684°FEL, Sec.05

Lat: 40.43527

Long: 104.68373

**County** Weld

**Rig Number** Savanna 802

**AFE #** na

**Field** Wattenberg

**Drilling Completed** TBD

**Bottom Hole Coordinates** BHL: 2823°FNL, 460°FWL, Sec. 06

**Ground Elevation** 4,640'

**K.B. Elevation** 4,655'

**Logged Interval** 5,000'

**Total Depth** TBD

**Formation** Niobrara B Chalk

**Type of Drilling Fluid** Water Based

## Operator

**Company** Extraction Oil & Gas

**Address** 1888 Sherman St., Suite 200  
Denver, CO 80203

## Geologist

**Name** Jared Rouse

**Company** Extraction Oil & Gas

**Address** 1888 Sherman St., Suite 200  
Denver, CO 80203



## Other

**Equipment** ML-461

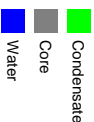
**Comments** Start: 3-10-15  
Standby: 3-10-15  
TD: TBD

**Services Provided** 2-man Logging  
On Site Geosteering

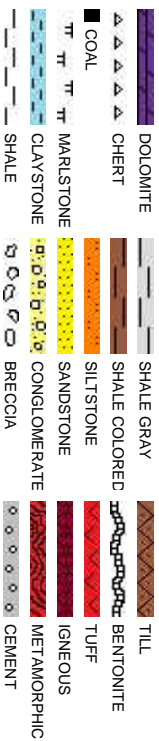
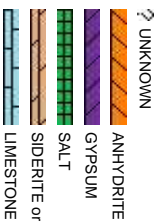
**Logger Names** Dominic Pitre / Nicholas Wat

**Address** Empirica, LLC.  
6360 W Sam Houston Pkwy  
Suite 100  
Houston, TX 77041

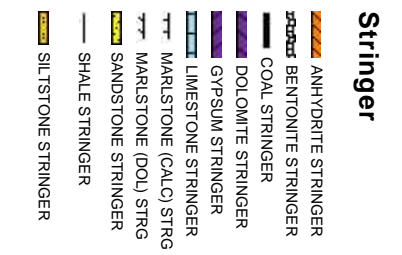
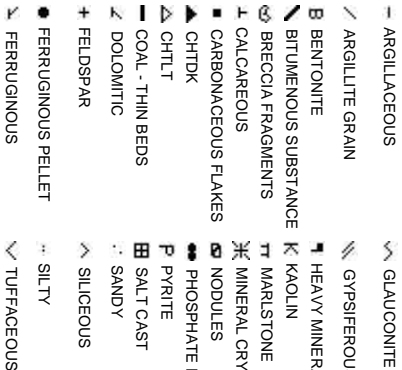
## Zone Color Coding



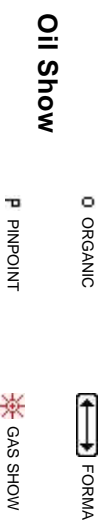
## Rock Types



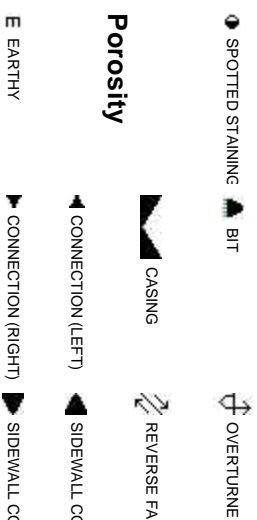
## Accessories



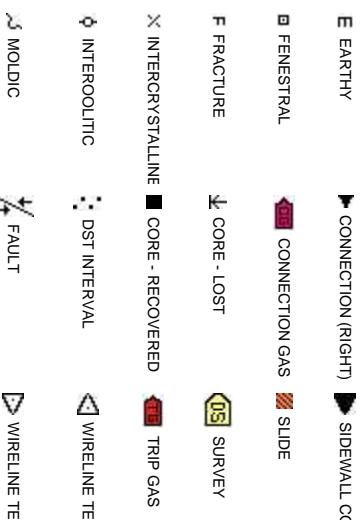
## Other Sym



## Engineering



## Porosity



# Tools

SECTION TOP L LITHOGRAPHIC

## Rounding

**MX** MICROXLN

DEPTH **A** ANGULAR **MS** MUDSTONE

ULT **R** ROUNDED **PS** PACKSTONE

**S** SUBANG **WS** WACKESTONE

D STRATA **P** SUBRND

## Sorting

ULT

## Textures

**M** MODERATE

PORE (LEFT)

PORE (RIGHT) **BS** BOUNDSTONE **P** POOR

**C** CHALKY **W** WELL

**CX** CRYPTOXLN

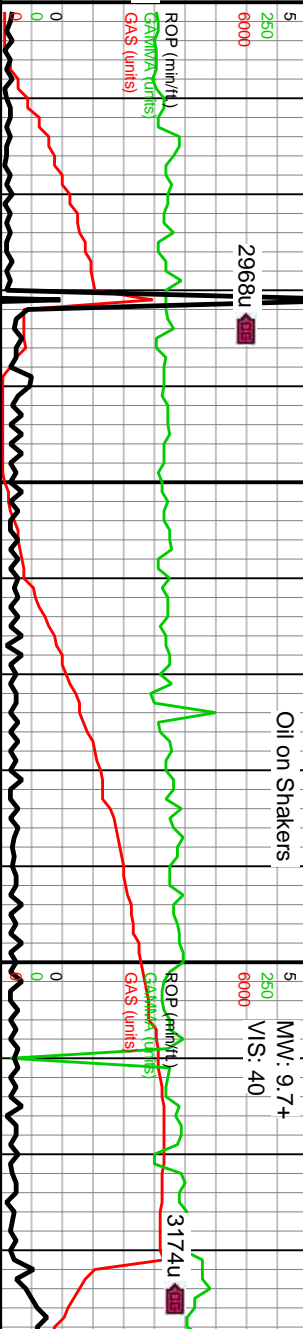
**E** EARTHY

STED - LEFT **FX** FINELYXLN

STED - RT **GS** GRAINSTONE

ROP  
GAMMA  
GAS

**Extraction OG**  
Weld County, Colorado  
Spud Date: 3-10-15  
Surface Casing @ 1,088'  
Intermediate Casing @ x,xxx'  
2-man Logging / Geosteering Began: 3-11-15



Slide/Rotate

Depth Labels

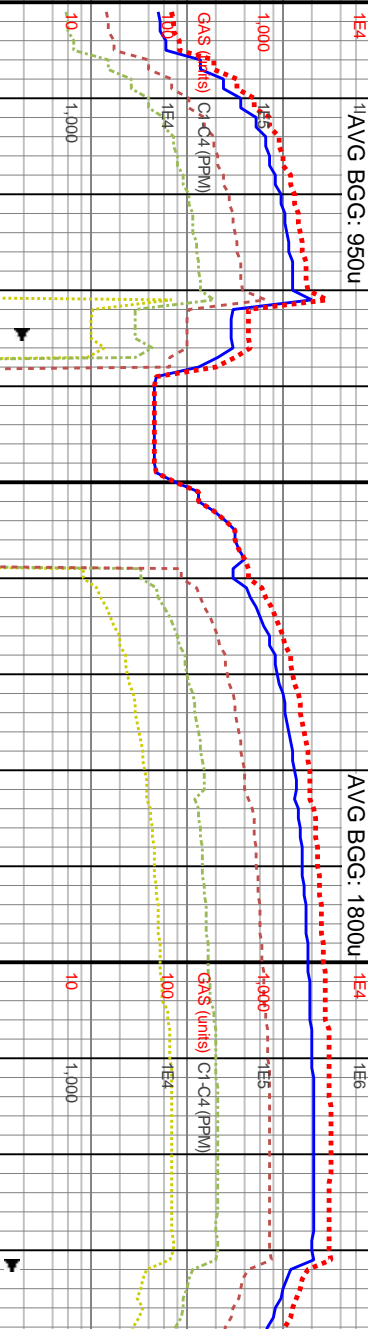
100 units = 1% methane

Total Gas & Chromatograph

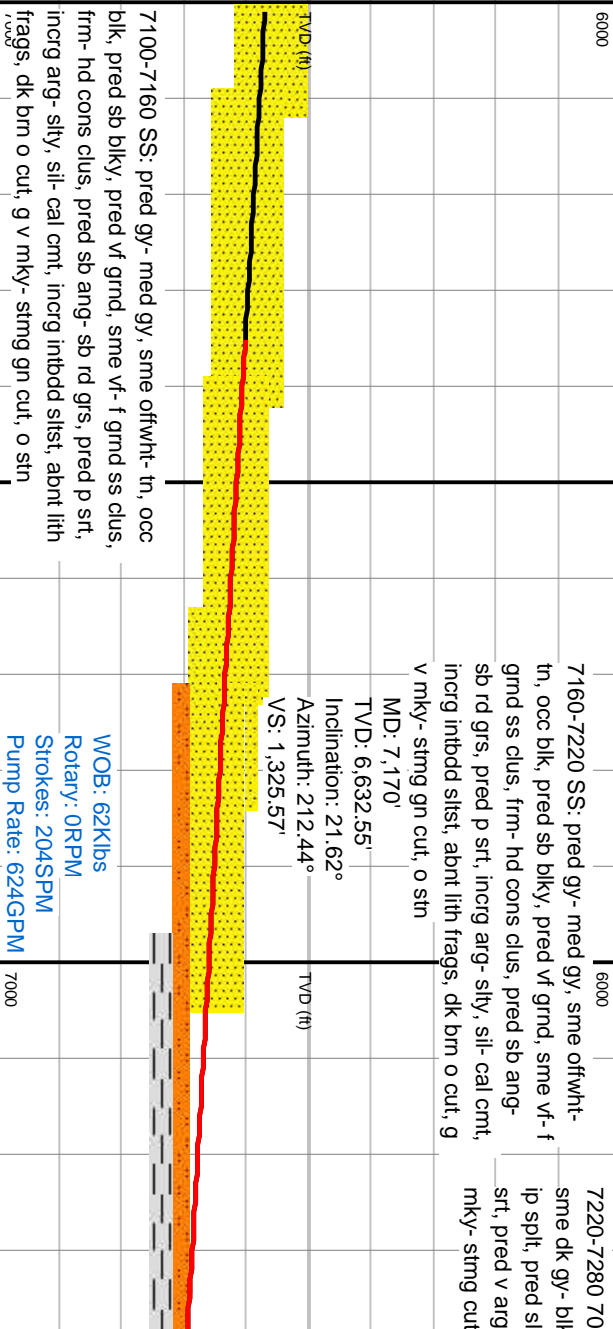
GAS  
C1  
C2  
C3  
C4

Depths Correspond to Driller's Pipe Tally

Logarithmic Scale



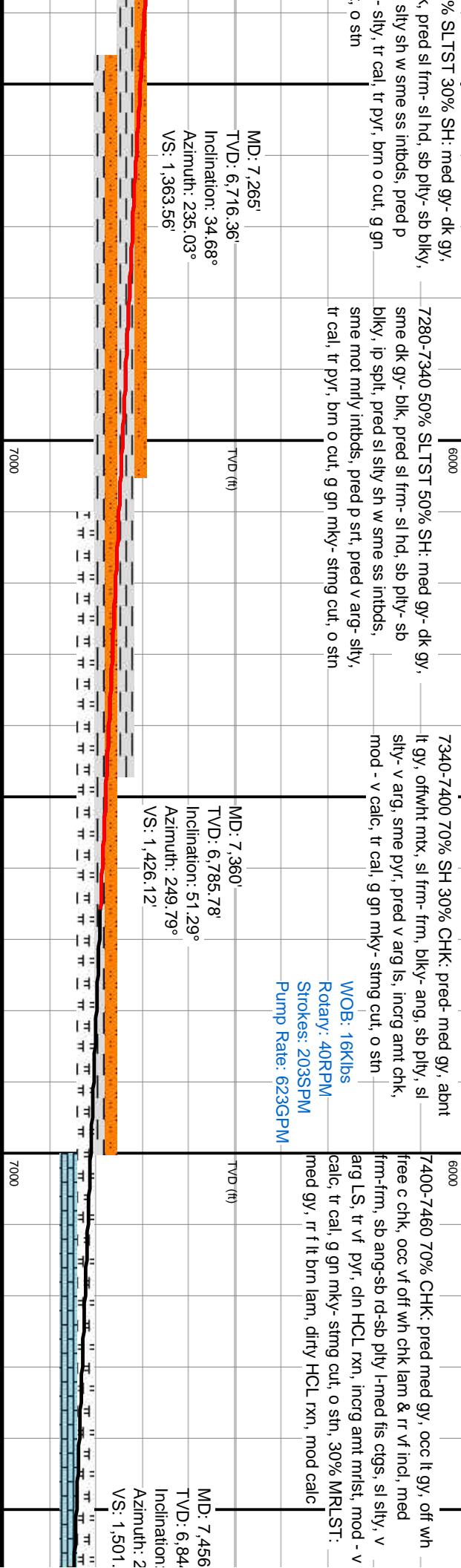
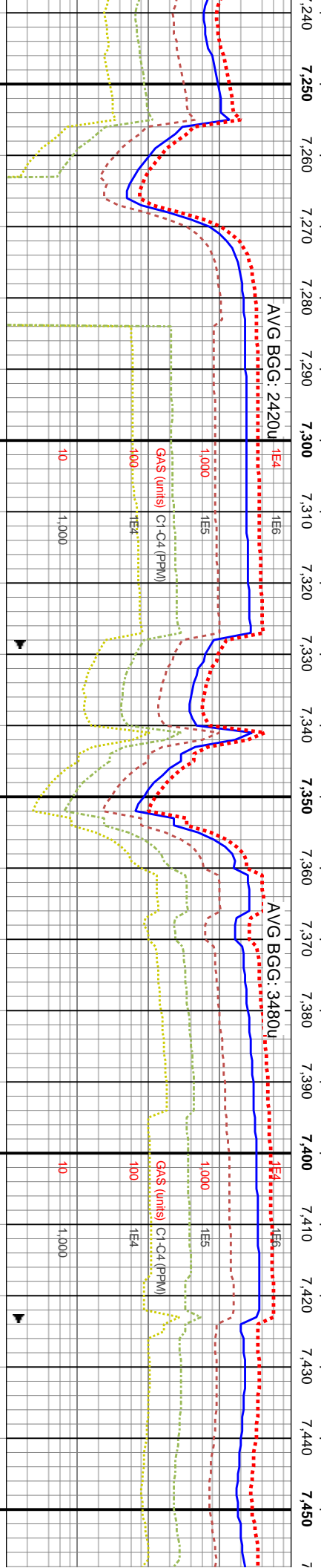
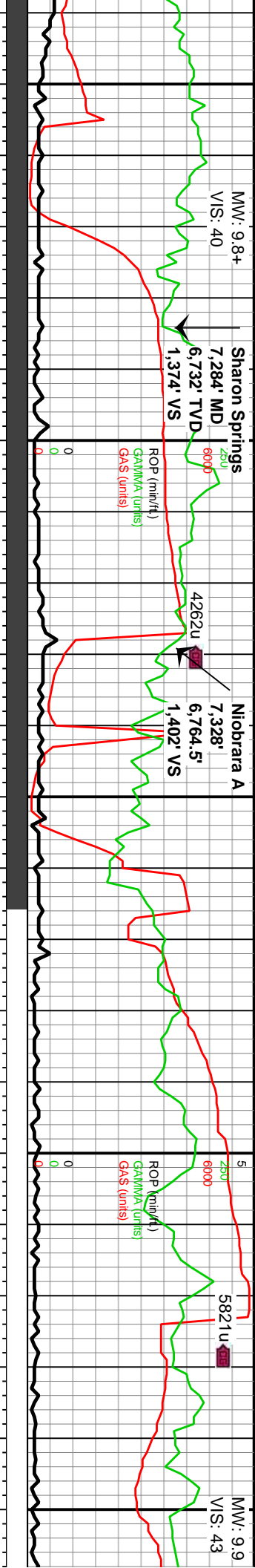
Well Bore  
TVD



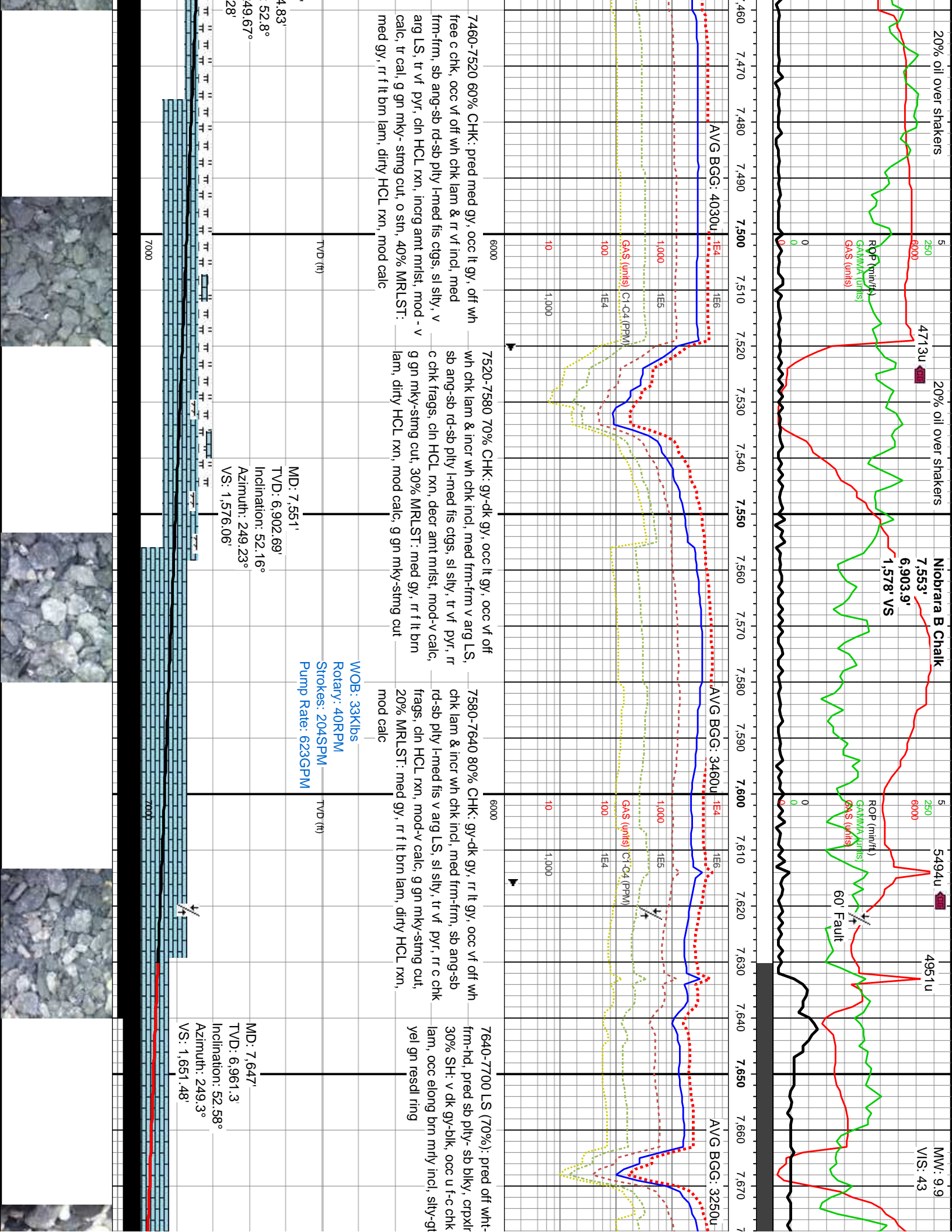
Oil Show

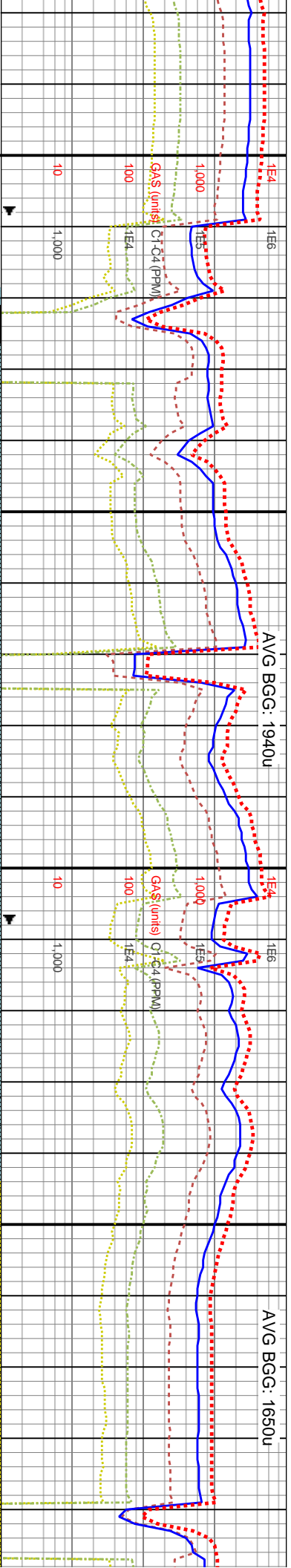
Images





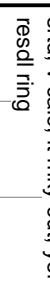


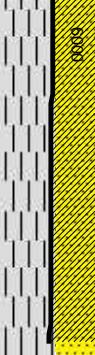
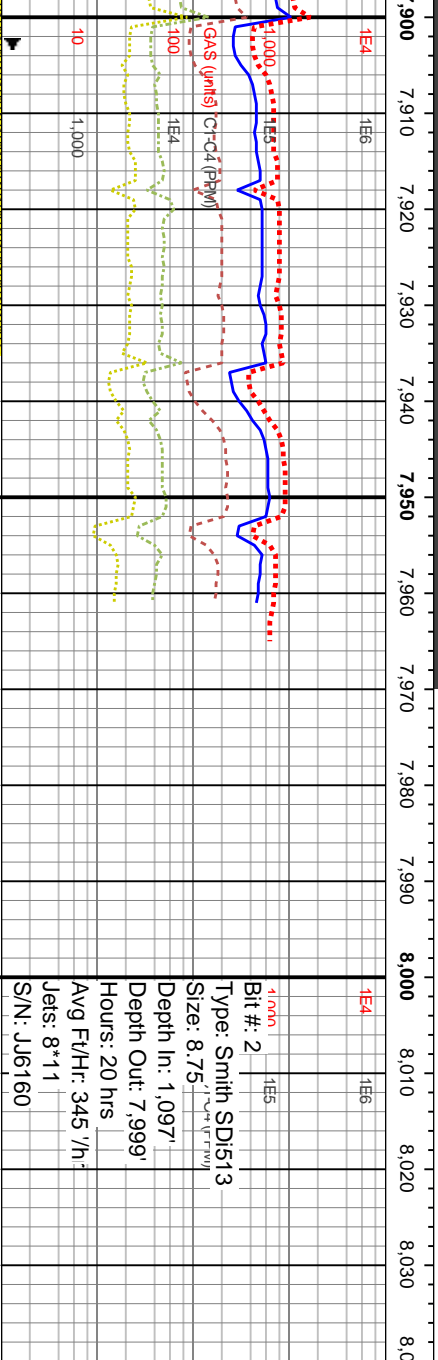
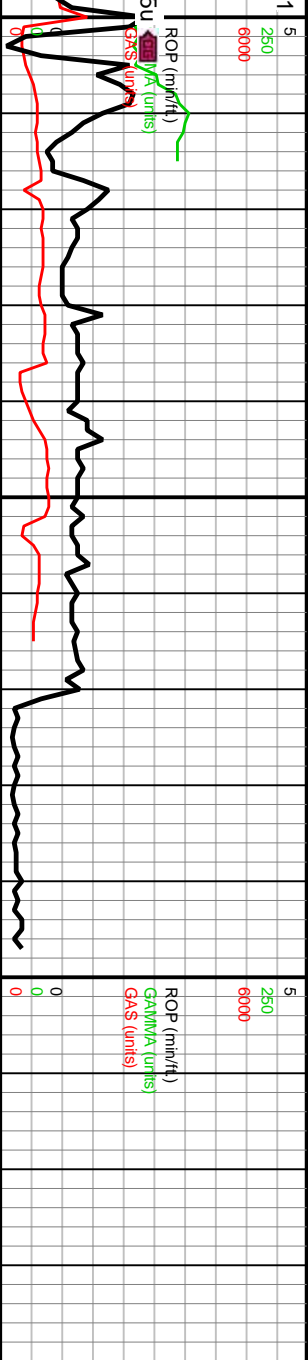




MD: 7  
TVD: 1  
Inclina: 1  
Azimu: 1  
VS: 1

7880-7910 SH: v  
vf tmsl ss grs, tr  
intbds, vf-f sb an  
grs, sl fri vf-slt  
arg cmt, mod srt  
mky cut, yel resc





MD: 7,934'  
TVD: 7,072.56'  
Inclination: 84.26°  
Azimuth: 258.33°  
VS: 1,911.85'

dk gy, rr	7910-7940 SH: v dk gy, rr	7940-7970 SH: pred dk	7970-7999 SH: pred dk
vf tmsl ss grs, tr	gy- blk, rr vf tmsl ss grs, tr	gy- blk, rr vf tmsl ss grs, tr	
clr sdy	clr sdy	clr sdy	
inbds, vf-f sb ang-sb rd	inbds, vf-f sb	inbds, vf-f sb	
grs, sl fri vf-silty	grs, sl fri vf-silty	grs, sl fri vf-silty	
ang-sb rd grs, sl fri vf-silty	ang-sb rd grs, sl fri vf-silty	ang-sb rd grs, sl fri vf-silty	
cls cons w/ arg cmnt, mod strd, v	cls cons w/ arg cmnt, mod strd, v	cls cons w/ arg cmnt, mod strd, v	
calc, n tr frac fl cal- tab cal,	calc, n tr frac fl cal- tab cal,	calc, n tr frac fl cal- tab cal,	
it gn mky cut, yel resdl	it gn mky cut, yel resdl	it gn mky cut, yel resdl	
ring	ring	ring	

