

Crew								
Name	Arrive	Depart	Name	Arrive	Depart	Name	Arrive	Depart
	Wellsite	Wellsite		Wellsite	Wellsite		Wellsite	Wellsite

Kristoffer Peterson	21/Feb/2015	08/Mar/2015	Juan Chaparro	21/Feb/2015	08/Mar/2015	Enyonam Anyigba	21/Feb/2015	08/Mar/2015	
Marcos Favela	21/Feb/2015	08/Mar/2015							

Mud Properties Record

Date / Time		LWD Run No.	Measured Depth (ft.)	Mud Type	Density (ppg)	Viscosity (cp)	pH	Fluid Loss (cc)	Oil / Water	Source	Total Chlorides (ppm)	K+ (%)
02/23/15	10:00	1	1125.0	Water Based Mud	8.5	27	7.0	N/A	0 / 99	Active Mud Pit	200	N/A
02/24/15	09:30	2	2290.0	Water Based Mud	8.3	26	10.8	N/A	0 / 99	Active Mud Pit	400	N/A
02/25/15	09:00	2	7987.0	Water Based Mud	10.7	28	8.0	N/A	0 / 89	Active Mud Pit	500	N/A
02/26/15	09:00	3	7987.0	Water Based Mud	10.7	28	8.0	N/A	0 / 89	Active Mud Pit	400	N/A
02/27/15	09:00	3	7987.0	Water Based Mud	9.5	50	8.0	N/A	0 / 94	Active Mud Pit	400	N/A
02/28/15	09:00	3	8832.0	Water Based Mud	9.2	52	10.8	N/A	0 / 96	Active Mud Pit	500	N/A
03/01/15	09:30	3	11175.0	Water Based Mud	9.4	37	9.0	N/A	0 / 95	Active Mud Pit	500	N/A
03/02/15	12:00	4	12876.0	Water Based Mud	9.4	44	9.0	N/A	0 / 95	Active Mud Pit	400	N/A
03/03/15	09:45	5	12876.0	Water Based Mud	9.3	47	8.5	N/A	0 / 95.0	Active Mud Pit	400	N/A
03/04/15	09:45	5	12876.0	Water Based Mud	9.3	47	8.5	N/A	0 / 95.0	Active Mud Pit	400	N/A
03/05/15	09:45	5	12876.0	Water Based Mud	9.3	47	8.5	N/A	0 / 95.0	Active Mud Pit	400	N/A
03/06/15	09:45	5	12876.0	Water Based Mud	9.3	47	8.5	N/A	0 / 95.0	Active Mud Pit	400	N/A
03/07/15	10:30	5	12876.0	Water Based Mud	9.4	35	9.1	N/A	0 / 95.0	Active Mud Pit	500	N/A

Mnemonics

Curve	Description	Units
GRAX	Gamma Ray - Apparent	API
ROPA	Rate of Penetration 3.0 ft Avg ROP AVG	ft/hr
TVD	True Vertical Depth	ft
WOBA	Surface Weight On Bit 1.0 ft Avg WOB AVG	klbf
TCDX	Downhole Temperature	degF
GRTX	Gamma Ray Time Since Drilled	mins
GRSI	Gamma Ray Sliding Indicator	unitless
GRIX	Gamma Ray Data Point Indicator	unitless

Equipment and Service Data

LWD Run No.	Tool	Serial Number	Measurement	Bit Offset (ft)	Max O.D. (in.)	Min I.D. (in.)
1	DIR	12497605	Directional	70.18	6.750	3.250
1	SRIG	10585205	Gamma	66.80	6.750	3.250
2	DIR	12497605	Directional	60.89	6.750	3.250
2	SRIG	10585205	Gamma	57.51	6.750	3.250
3	DIR	12168813	Directional	65.03	4.750	2.315
3	SRIG	11932890	Gamma	61.69	4.750	2.315
4	DIR	12168813	Directional	62.77	4.750	2.315

4	SRIG	11932890	Gamma	59.43	4.750	2.315
5	DIR	12235770	Directional	62.70	4.750	2.315
5	SRIG	11714036	Gamma	59.36	4.750	2.315

Service and Tool Mnemonics


Mnemonic	Name	Description
DIR	Directional	Wellbore directional survey
SRIG	Inclination and Gamma	Probe based gamma ray and inclination module

Comments

- (1) A sliding indicator is shown to the left of track 1 as a heavy green line. The indicator has been depth-shifted to the gamma sensor offset to correspond with data acquired while sliding.
- (2) Depth measurements were obtained from a depth tracking system not supplied or operated by Baker Hughes. Due to the lack of control by Baker Hughes LWD logging engineers, depth calibrations and measurements could not be independently verified and the unverified depths as supplied to Baker Hughes are being used to present logging data.
- (3) Baker Hughes INTEQ run 1 utilized 6 3/4 inch NaviGamma (Gamma Ray and Directional) behind a 13 1/2 inch bit and steerable assembly from 24 to 1125 feet MD (24 feet to 1124 feet TVD).
- (4) Baker Hughes LWD run 2 utilized 6 3/4 inch NaviGamma Services (VSS, Directional, and Gamma Ray) behind an 8 3/4 inch bit and steerable assembly from 1125 to 7987 feet MD (1124 to 6910 feet TVD).
- (5) Baker Hughes LWD run 3, 4 and 5 utilized 4 3/4 inch NaviGamma Services (VSS, Directional, and Gamma Ray) behind and 6 1/8 inch bit and steerable assembly from 7987 to 14888 feet MD (6910 to 6882 feet TVD).

Remarks

Number	Measured Depth (ft)	Hole Section (in.)	LWD Run No.	Remark
1	6550	8.750	2	The interval from surface to 6500 feet MD (5999 feet TVD) was not logged since logging services began at kick off point.
2	7959	8.750	2	The interval between 7929 to 7987 feet MD (6905 to 6910 feet TVD) was not logged for up to 77.36 hours due to casing and cementing operations
3	12839	6.125	4	The interval between 12817 to 12880 feet MD (6901 to 6900 feet TVD) was not logged for up to 107.3 hours due to MWD failure and rig repairs
4	14833	6.125	5	The interval from 14826 to 14888 feet MD (6882 to 6882 feet TVD) was not logged due to bit to sensor offset at TD



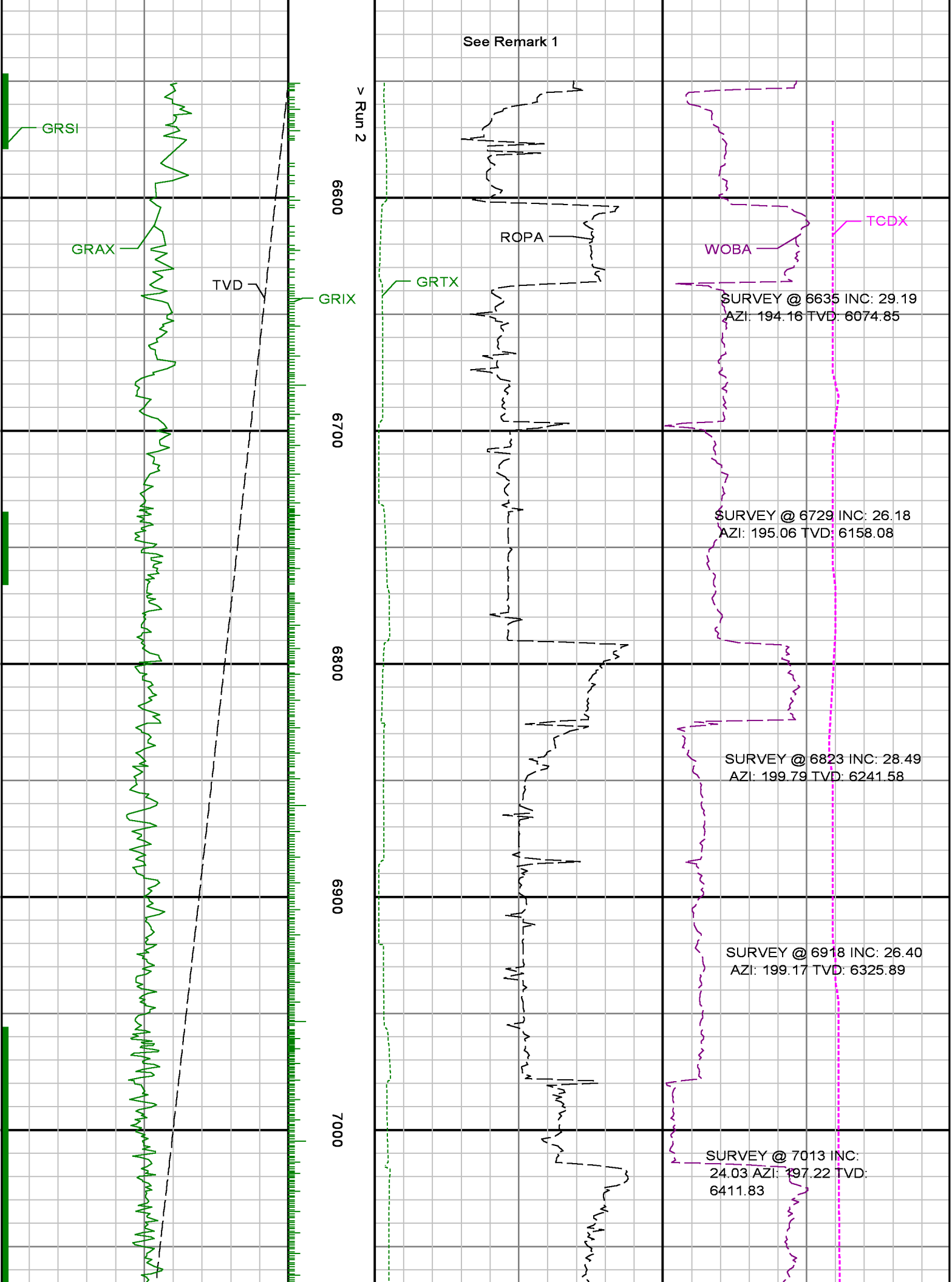
Company : Extraction Oil & Gas

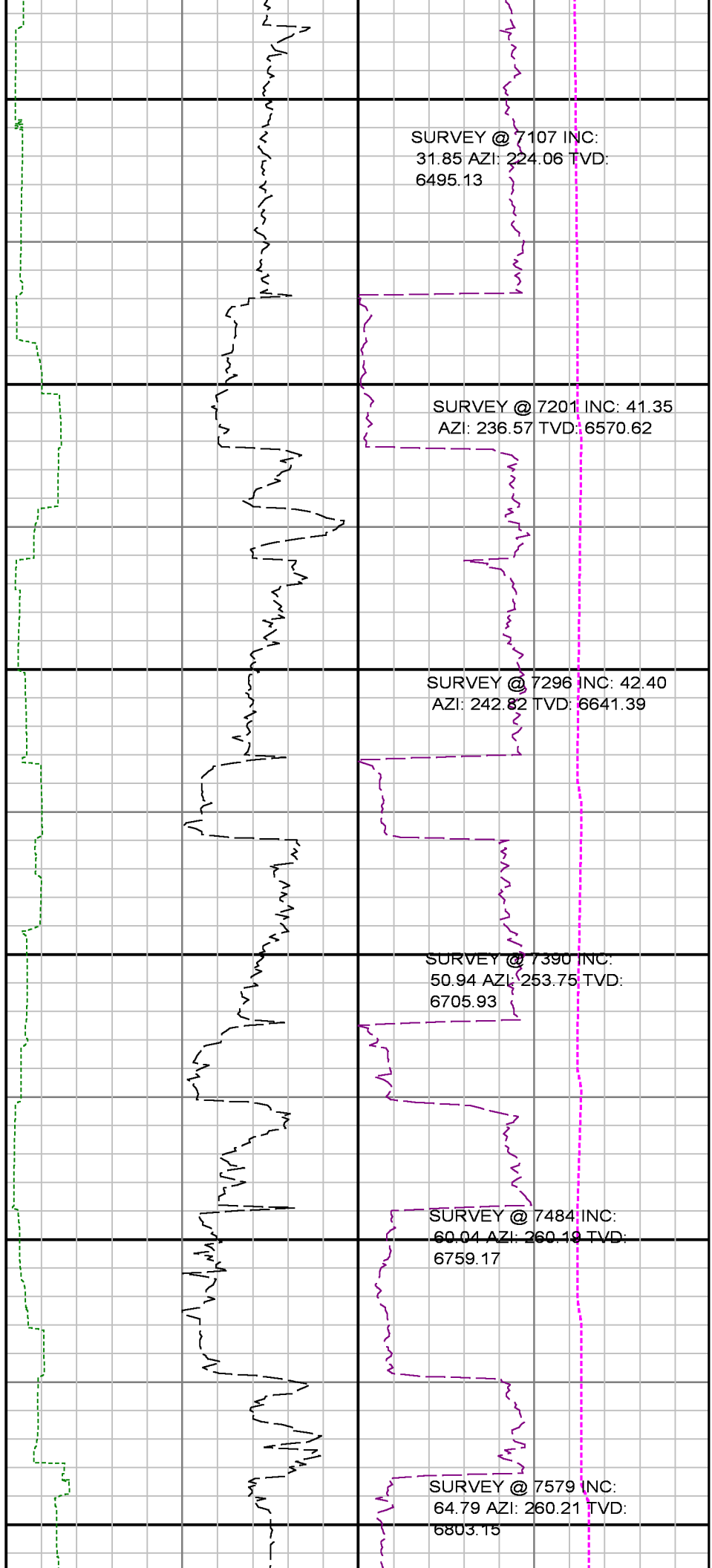
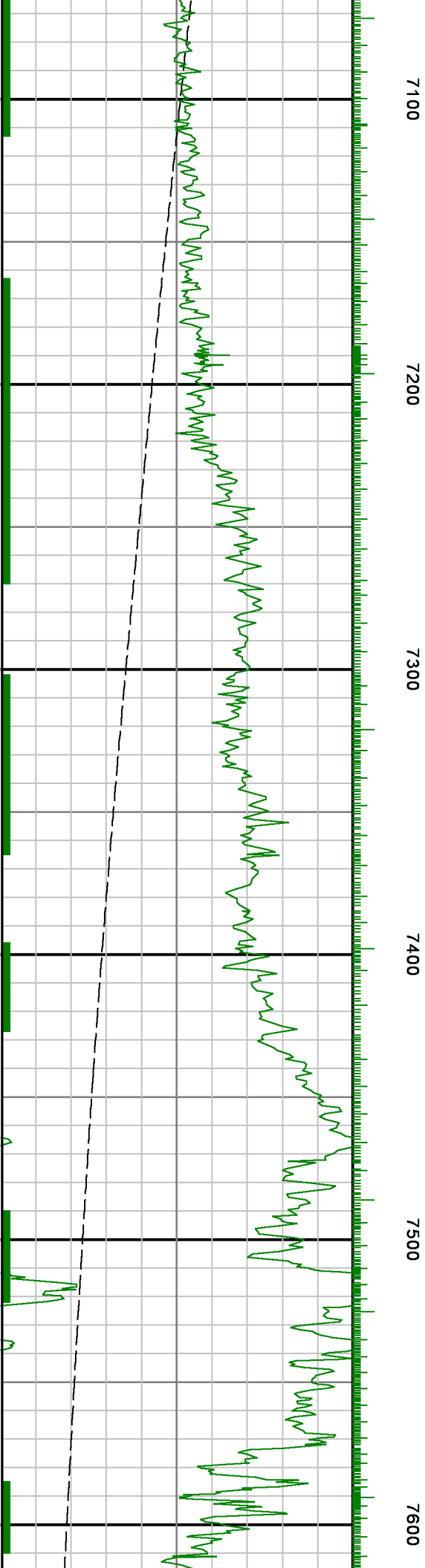
Well : DT-MARTINEZ 3-5-6

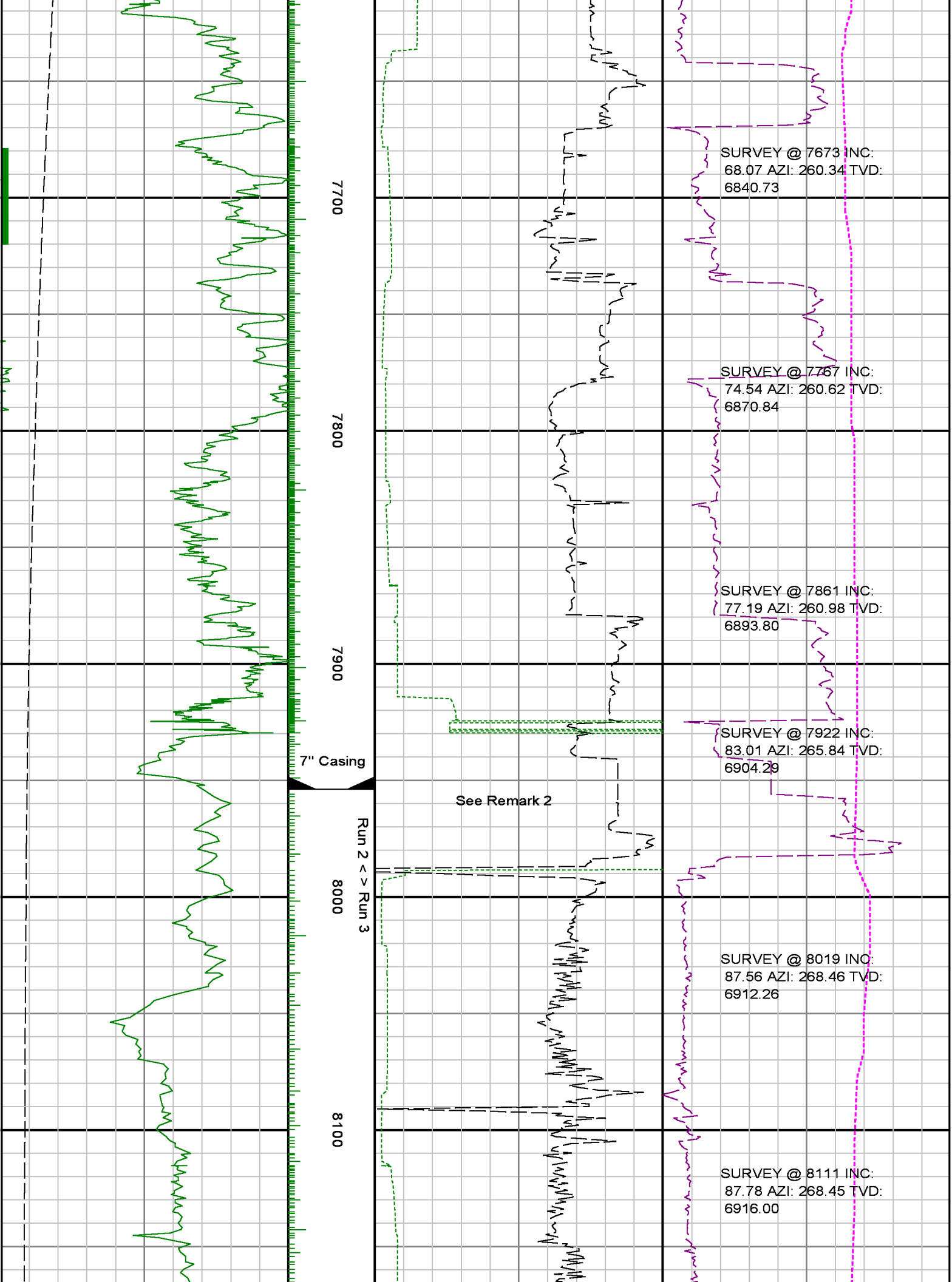
Interval : 6500.00 - 14950.00 feet

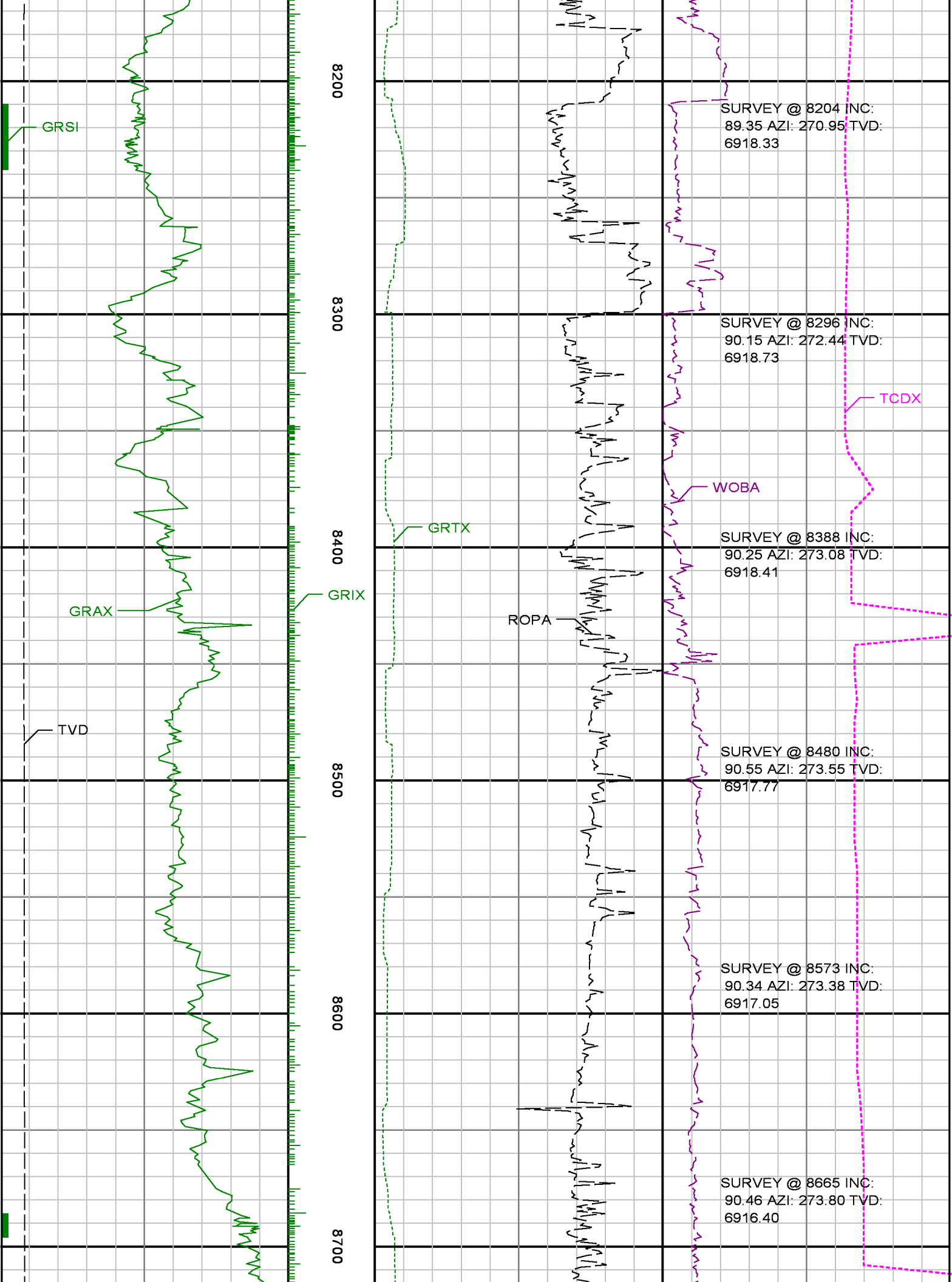
Created : 07/Mar/2015 4:06:17 PM

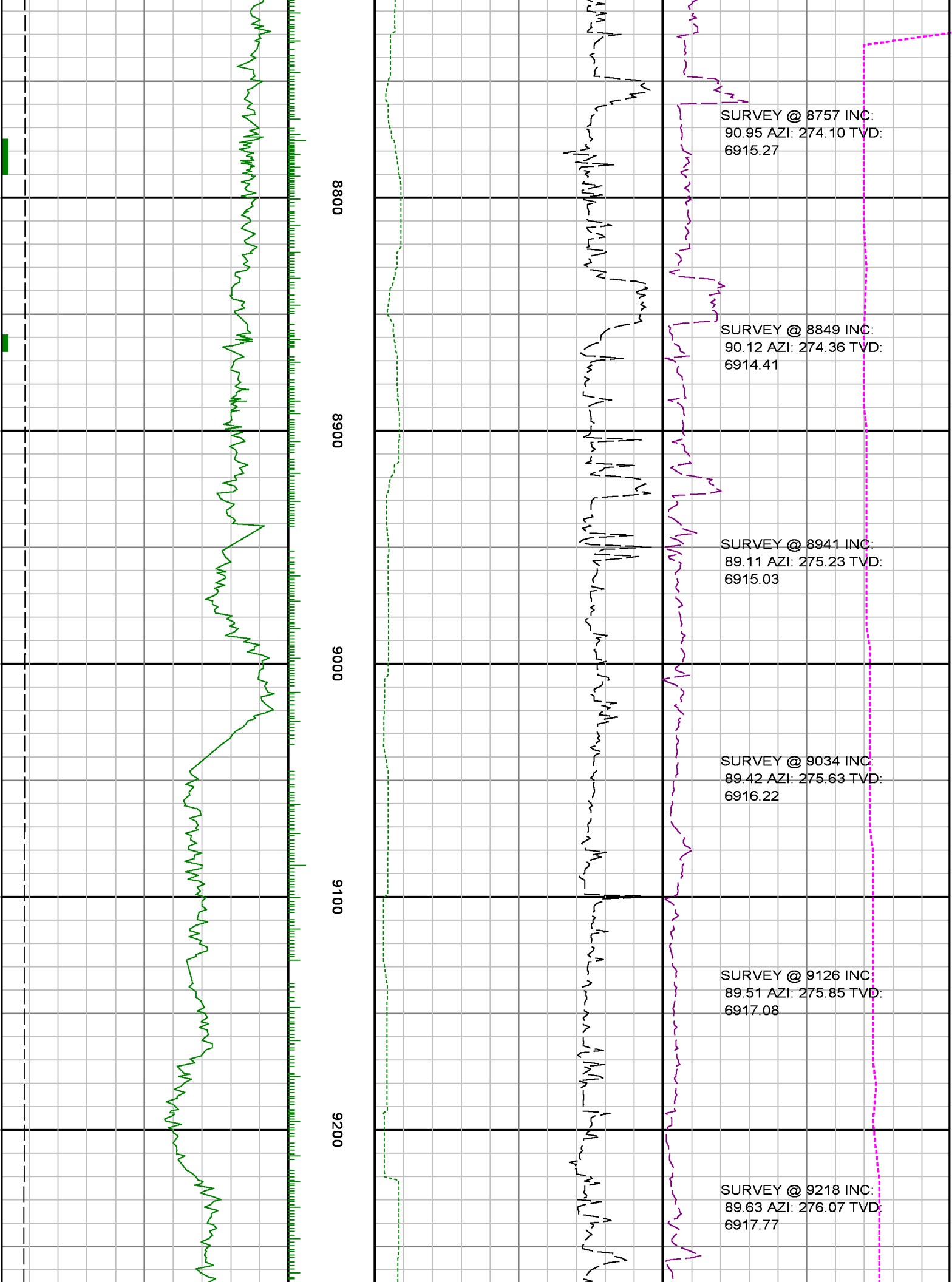
True Vertical Depth TVD		MD feet 1:600	Rate of Penetration 3.0 ft Avg ROPA		Surface Weight On Bit 1.0 ft Avg WOBA	
7000	6000		800	0	0	100
ft			ft/hr		klbf	
Gamma Ray Apparent 3.0 ft Avg GRAX			Gamma Ray Time Since Drilled GRTX		Downhole Temperature TCDX	
0200			0600		0250	
API			min		degF	

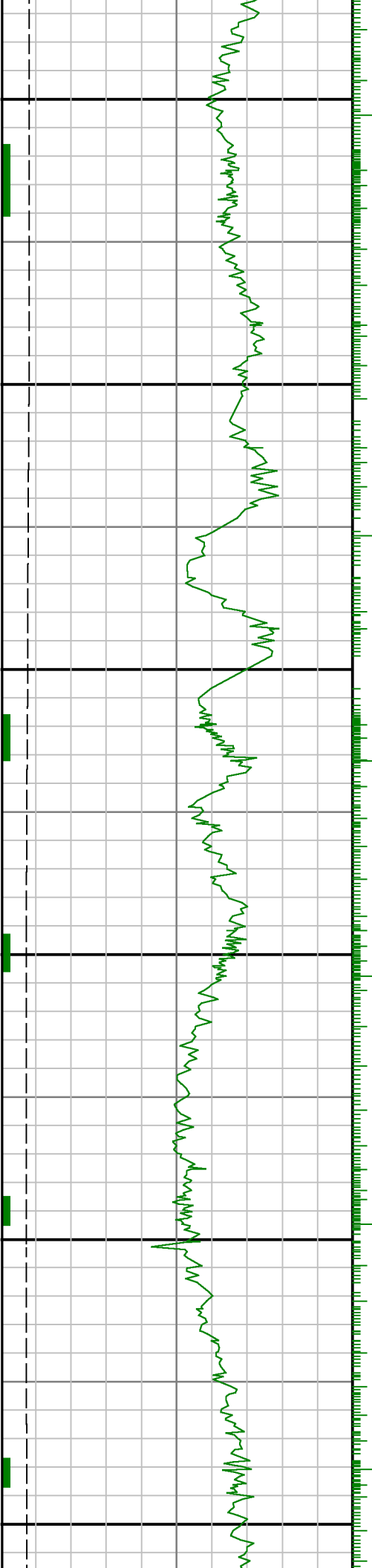












9300

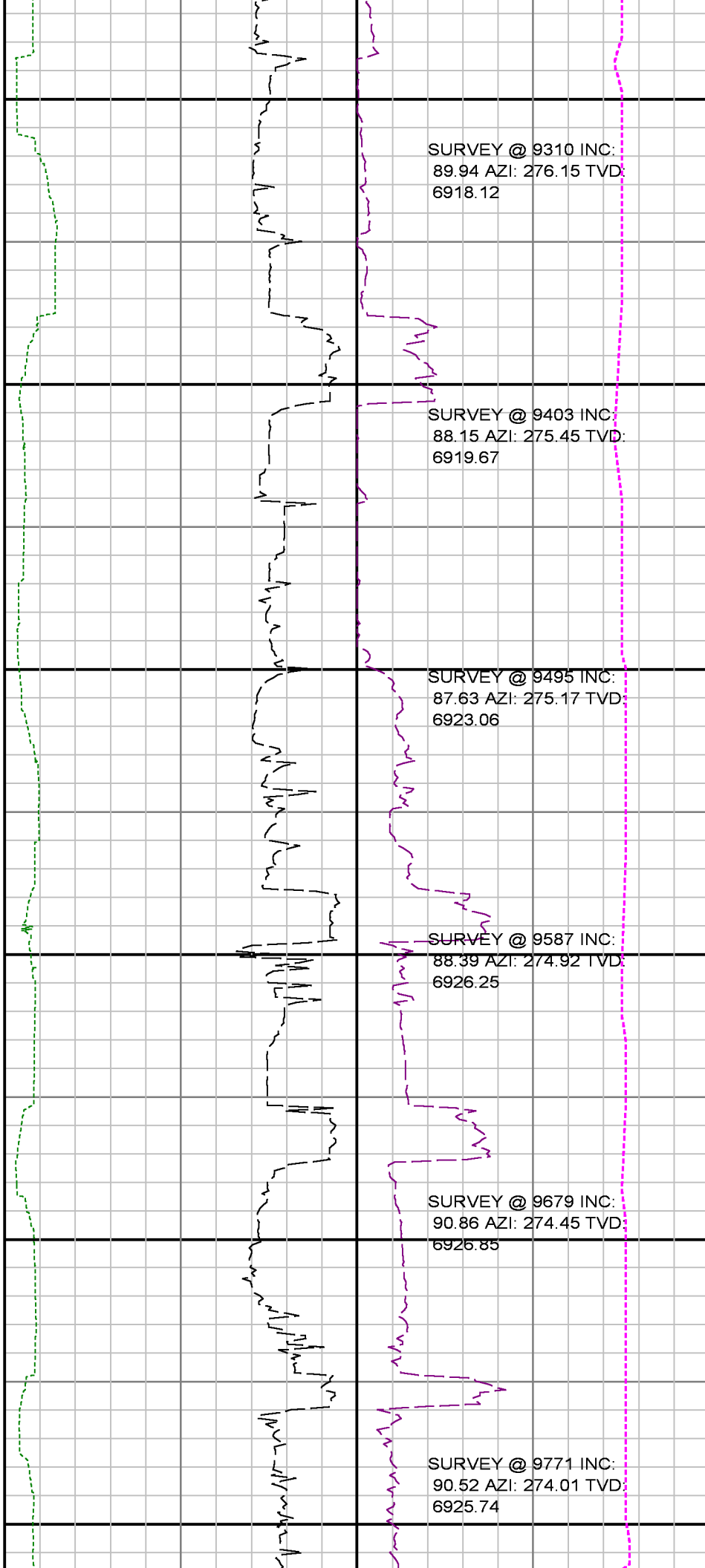
9400

9500

9600

9700

9800



SURVEY @ 9310 INC:
89.94 AZI: 276.15 TVD:
6918.12

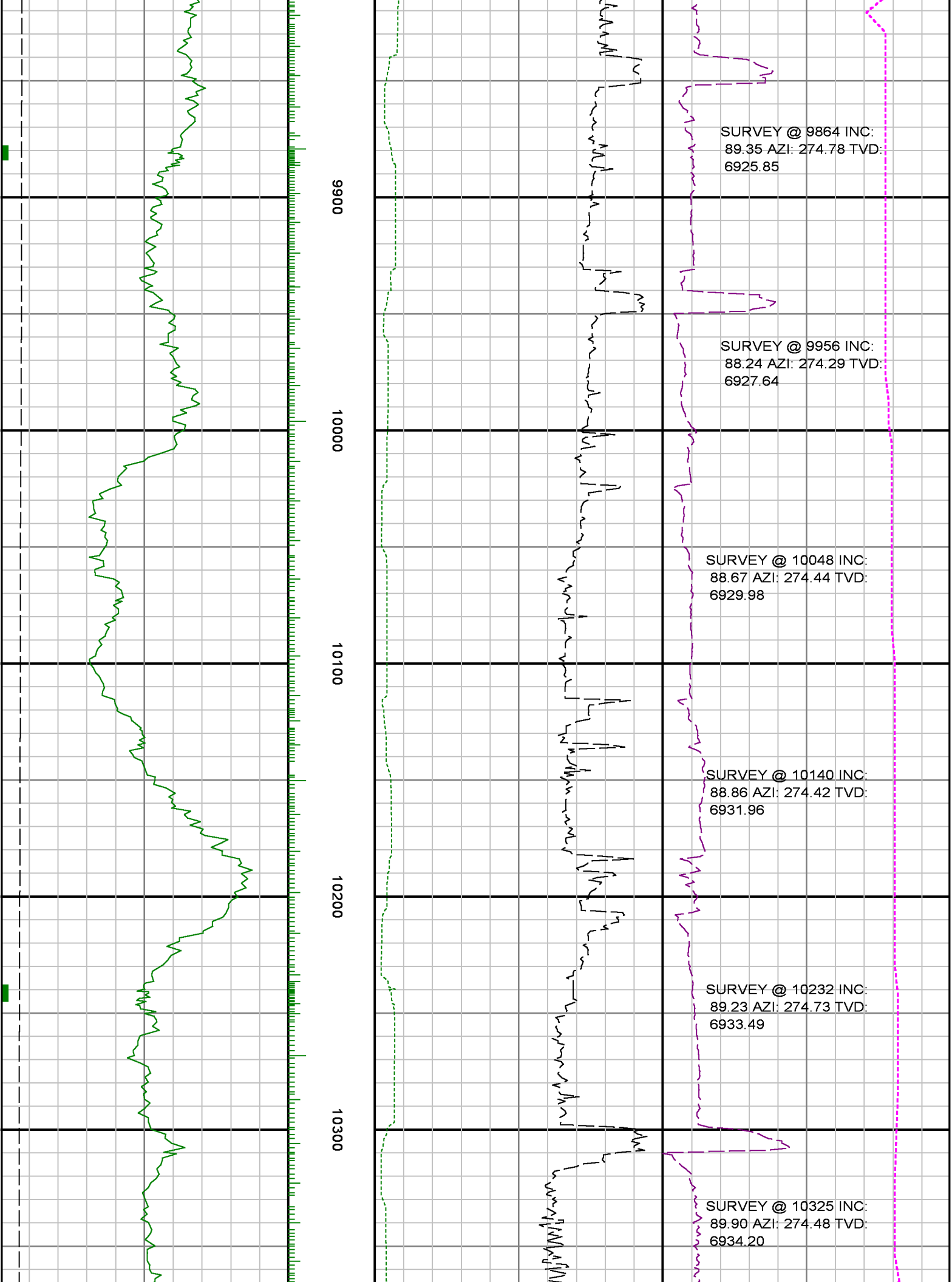
SURVEY @ 9403 INC:
88.15 AZI: 275.45 TVD:
6919.67

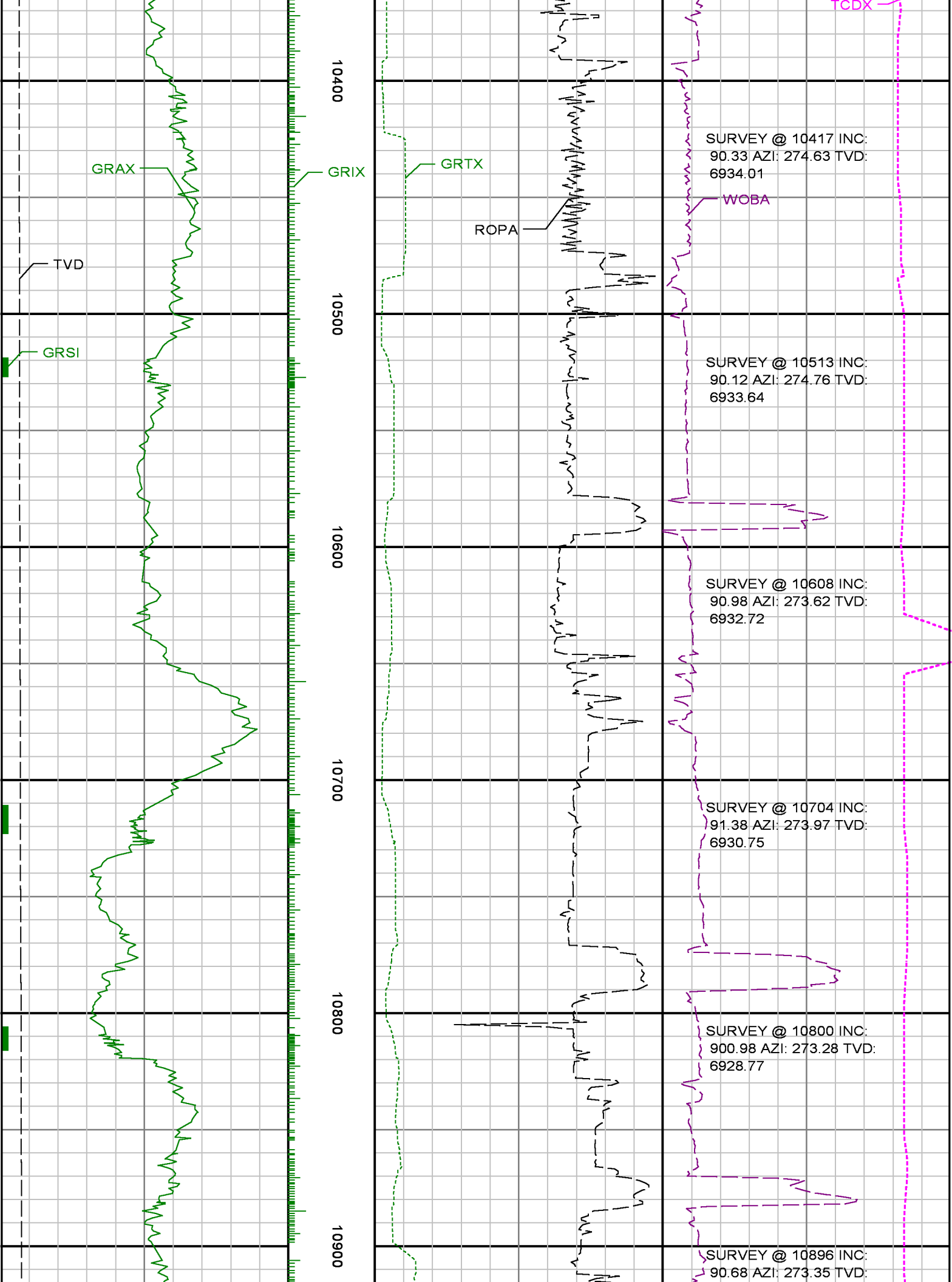
SURVEY @ 9495 INC:
87.63 AZI: 275.17 TVD:
6923.06

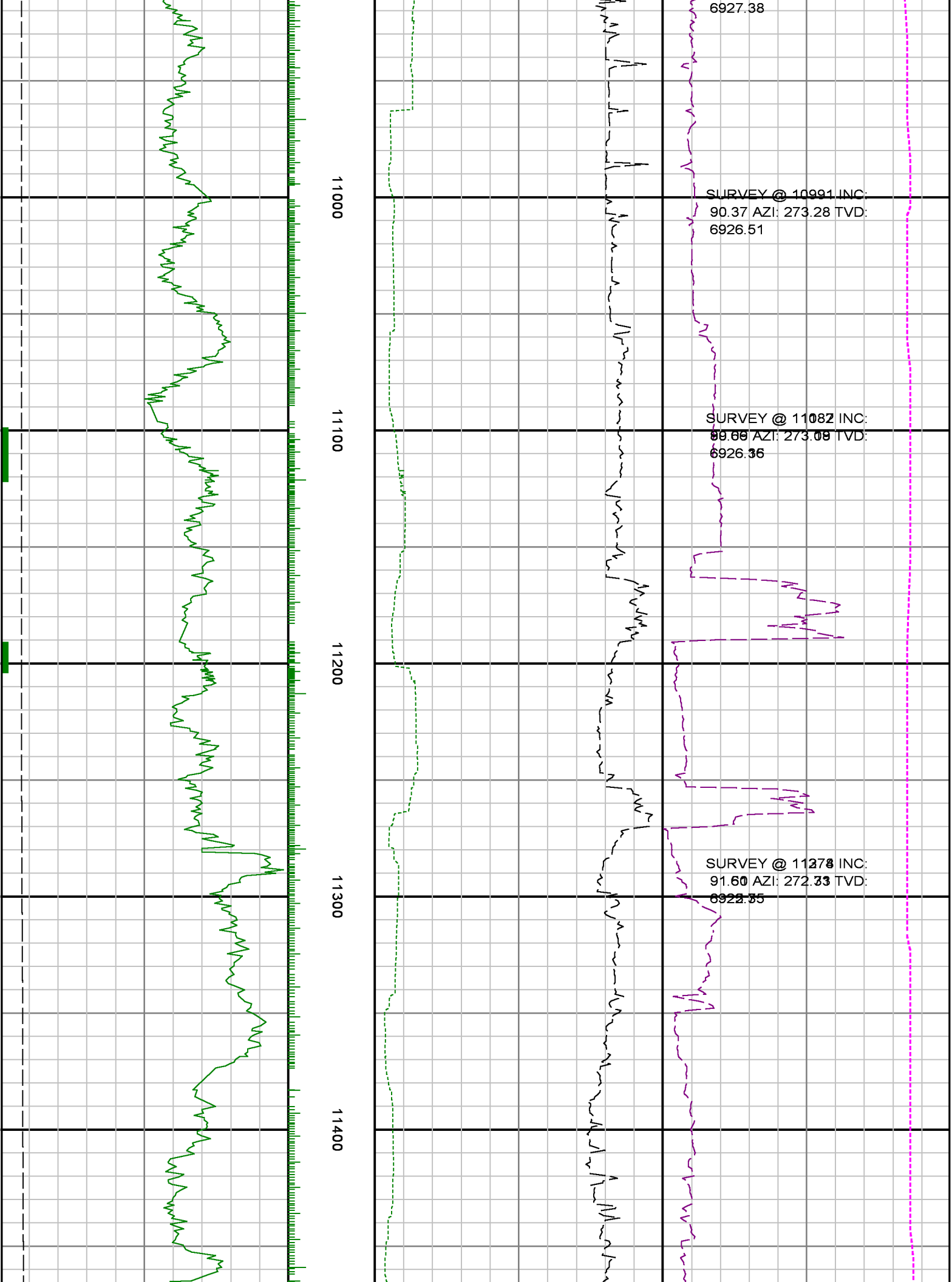
SURVEY @ 9587 INC:
88.39 AZI: 274.92 TVD:
6926.25

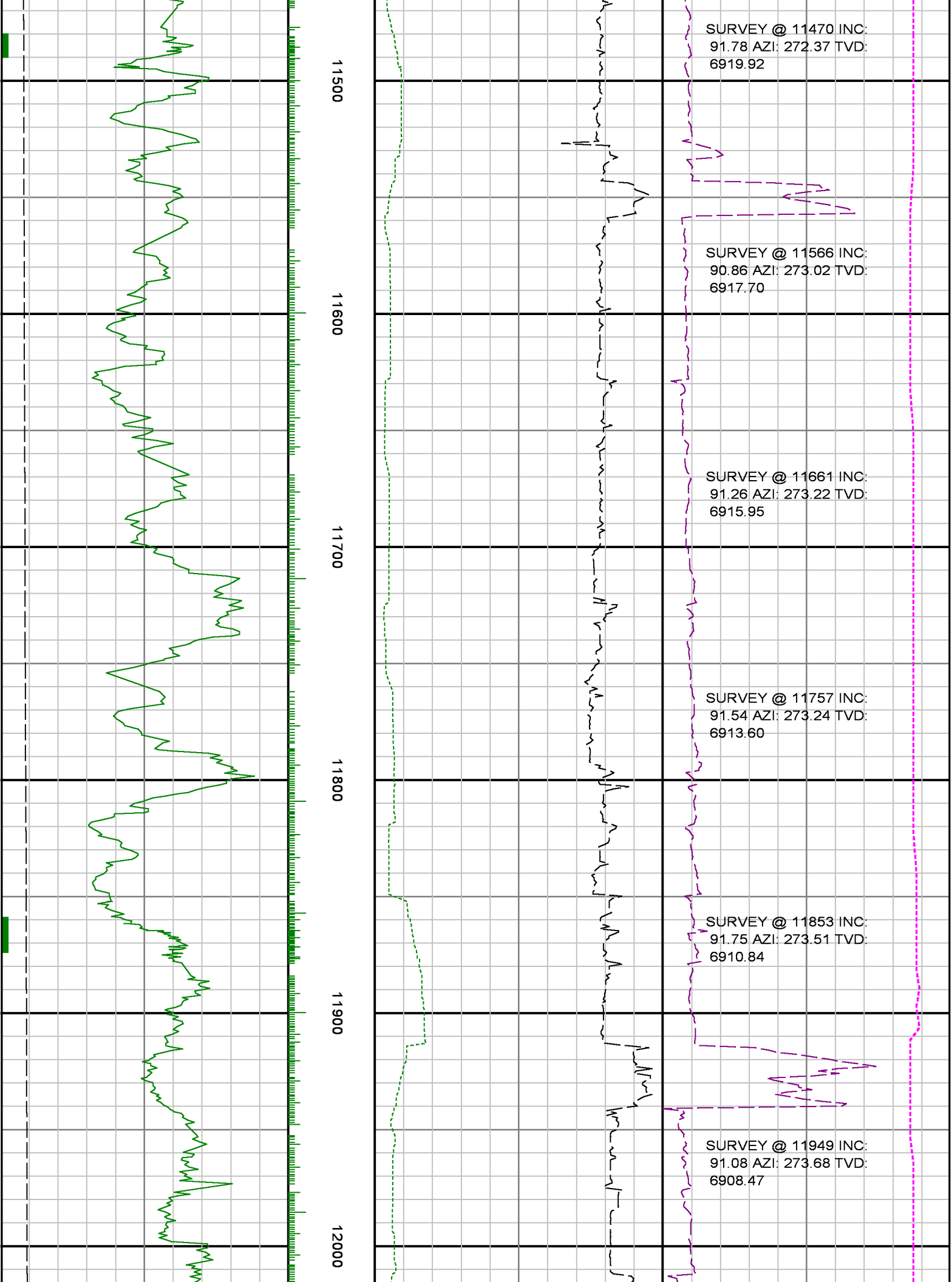
SURVEY @ 9679 INC:
90.86 AZI: 274.45 TVD:
6926.85

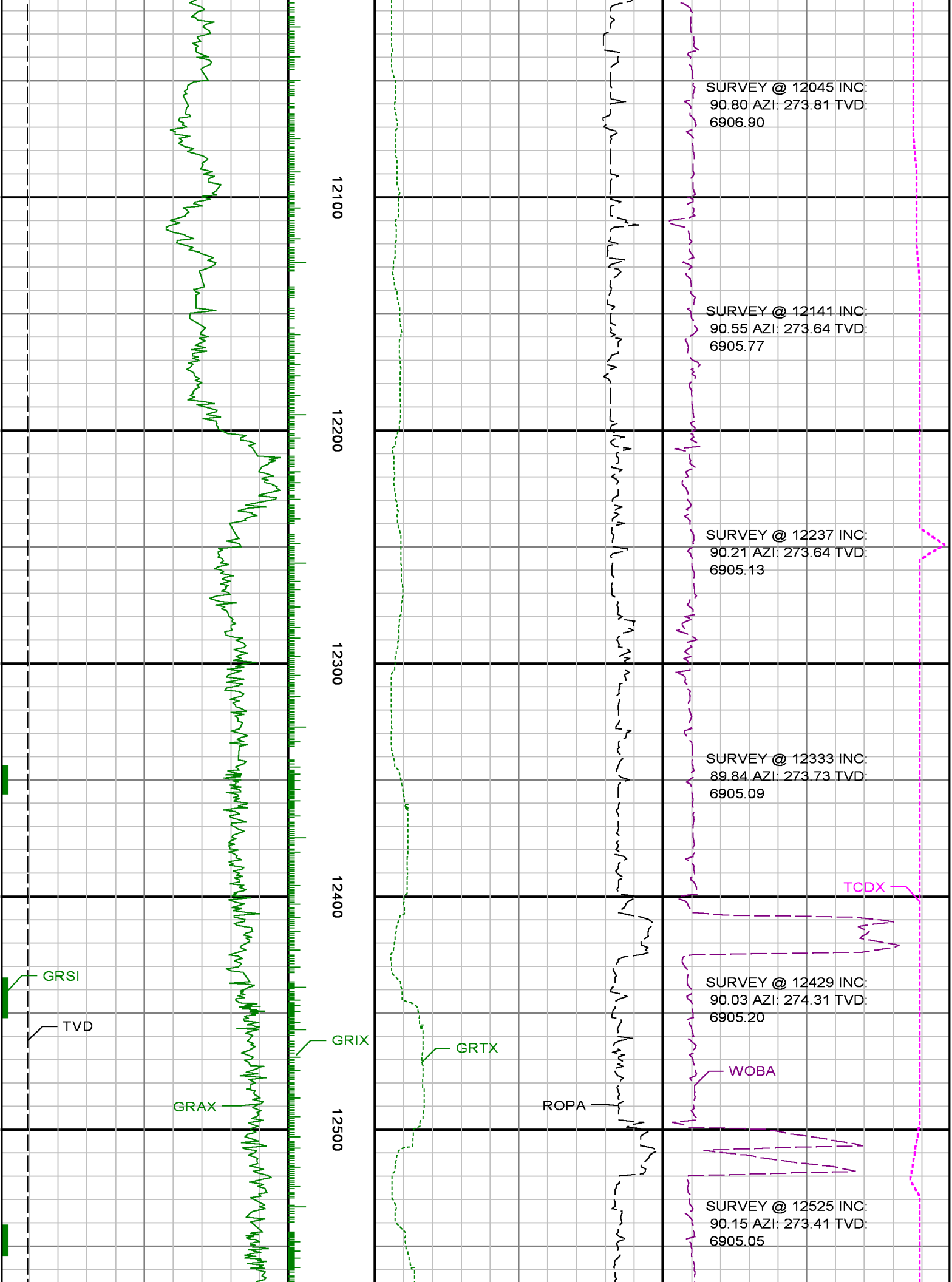
SURVEY @ 9771 INC:
90.52 AZI: 274.01 TVD:
6925.74

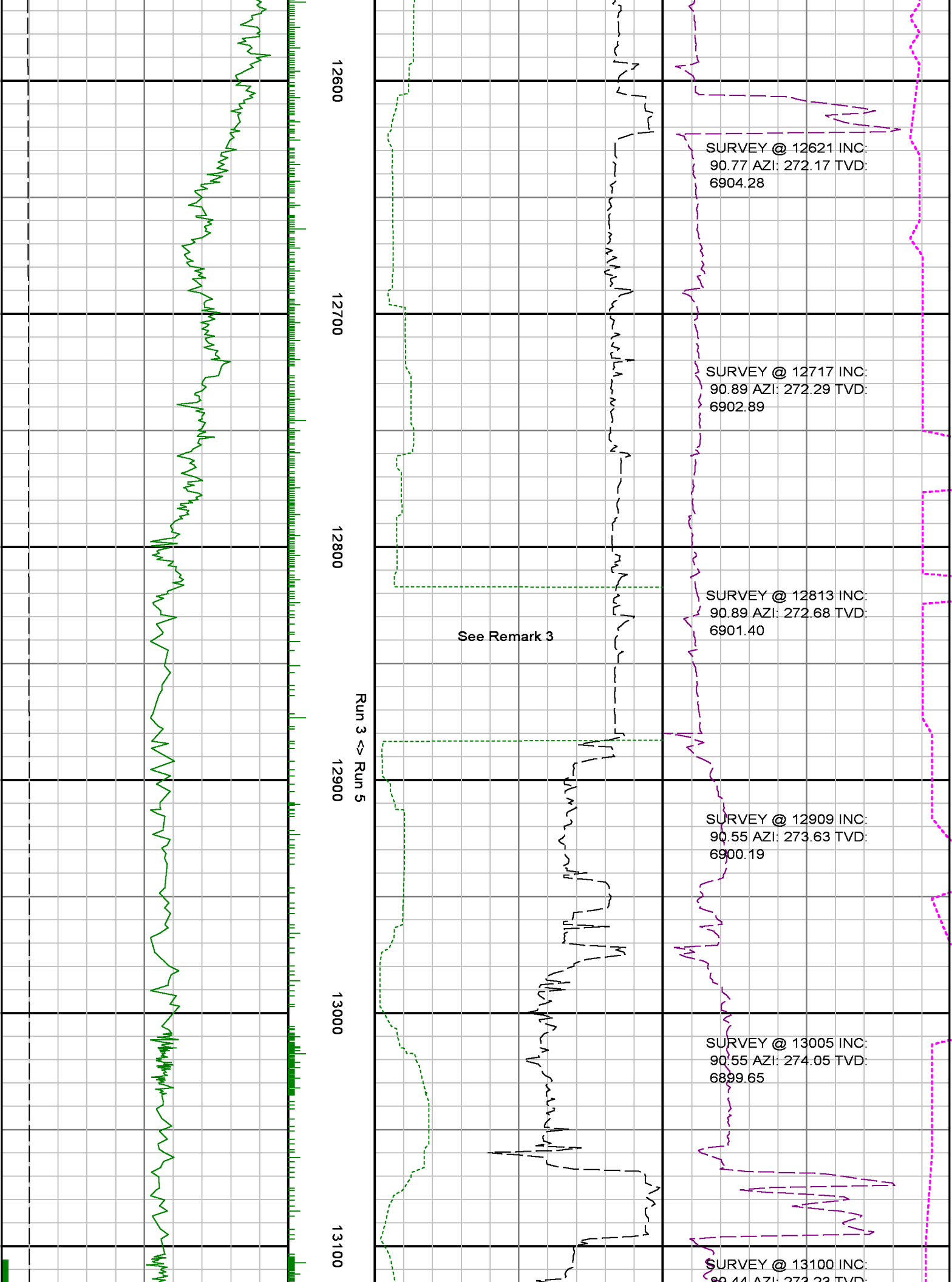


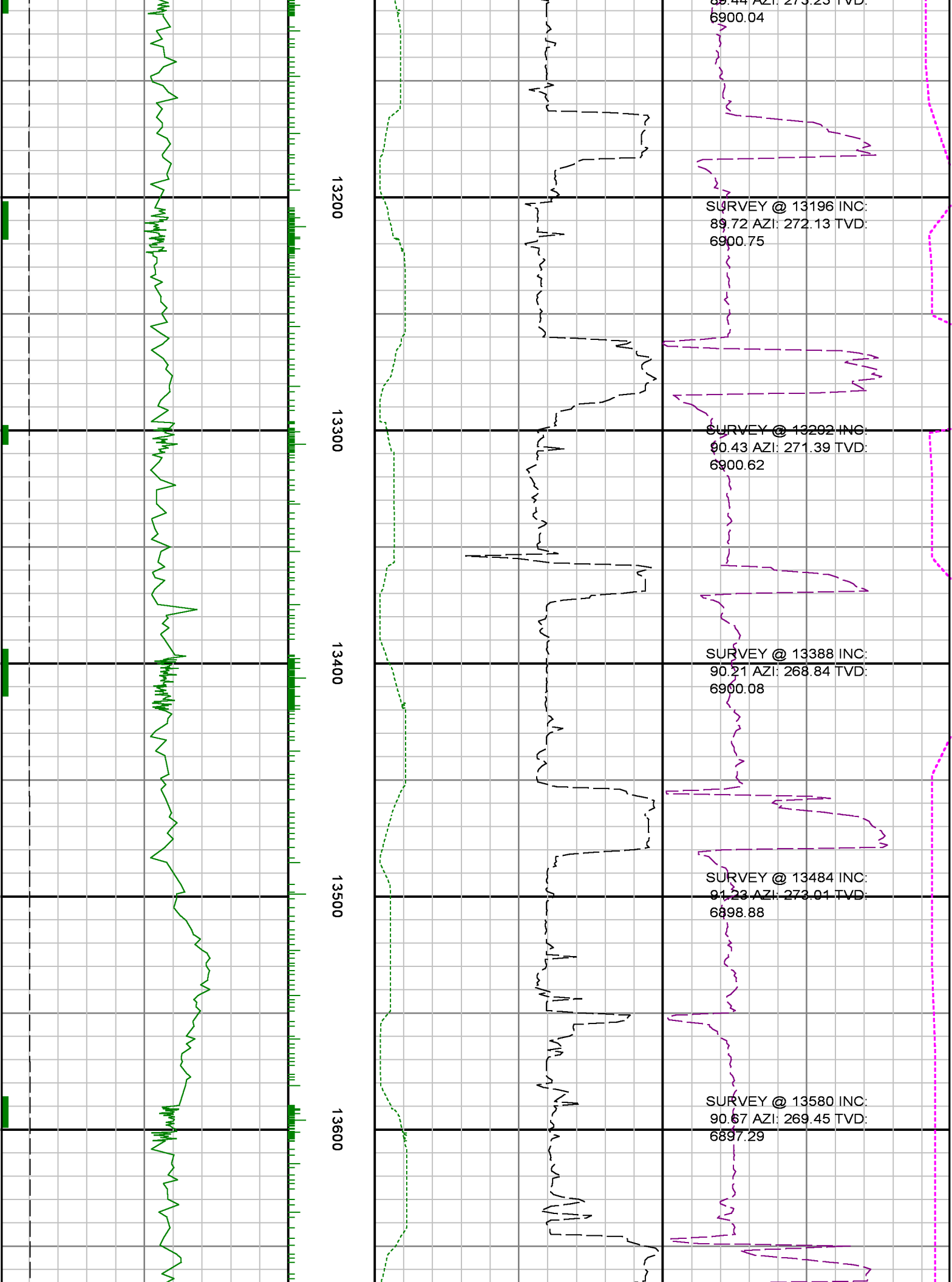


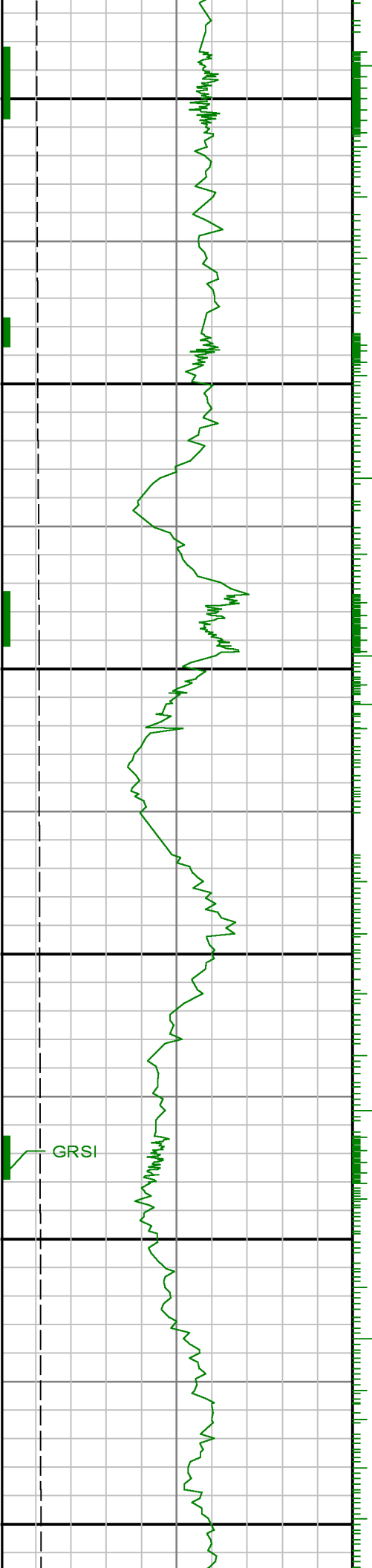




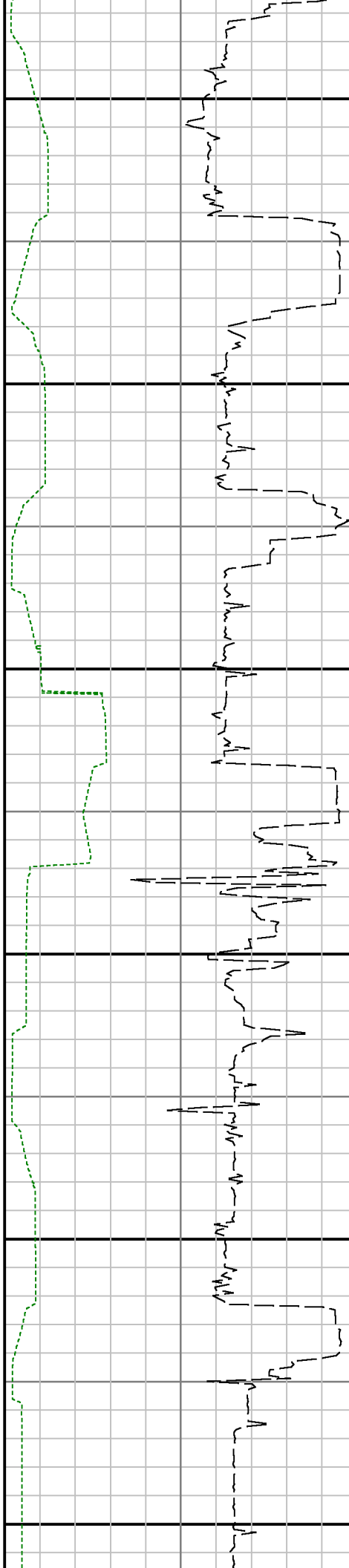








13700 13800 13900 14000 14100 14200



SURVEY @ 13676 INC:
89.93 AZI: 268.22 TVD:
6896.78

SURVEY @ 13771 INC:
92.06 AZI: 266.97 TVD:
6895.13

SURVEY @ 13867 INC:
92.03 AZI: 271.02 TVD:
6891.71

SURVEY @ 13963 INC:
90.89 AZI: 272.43 TVD:
6889.26

SURVEY @ 14058 INC:
90.77 AZI: 272.52 TVD:
6887.88

SURVEY @ 14154 INC:
91.33 AZI: 274.15 TVD:
6886.13

