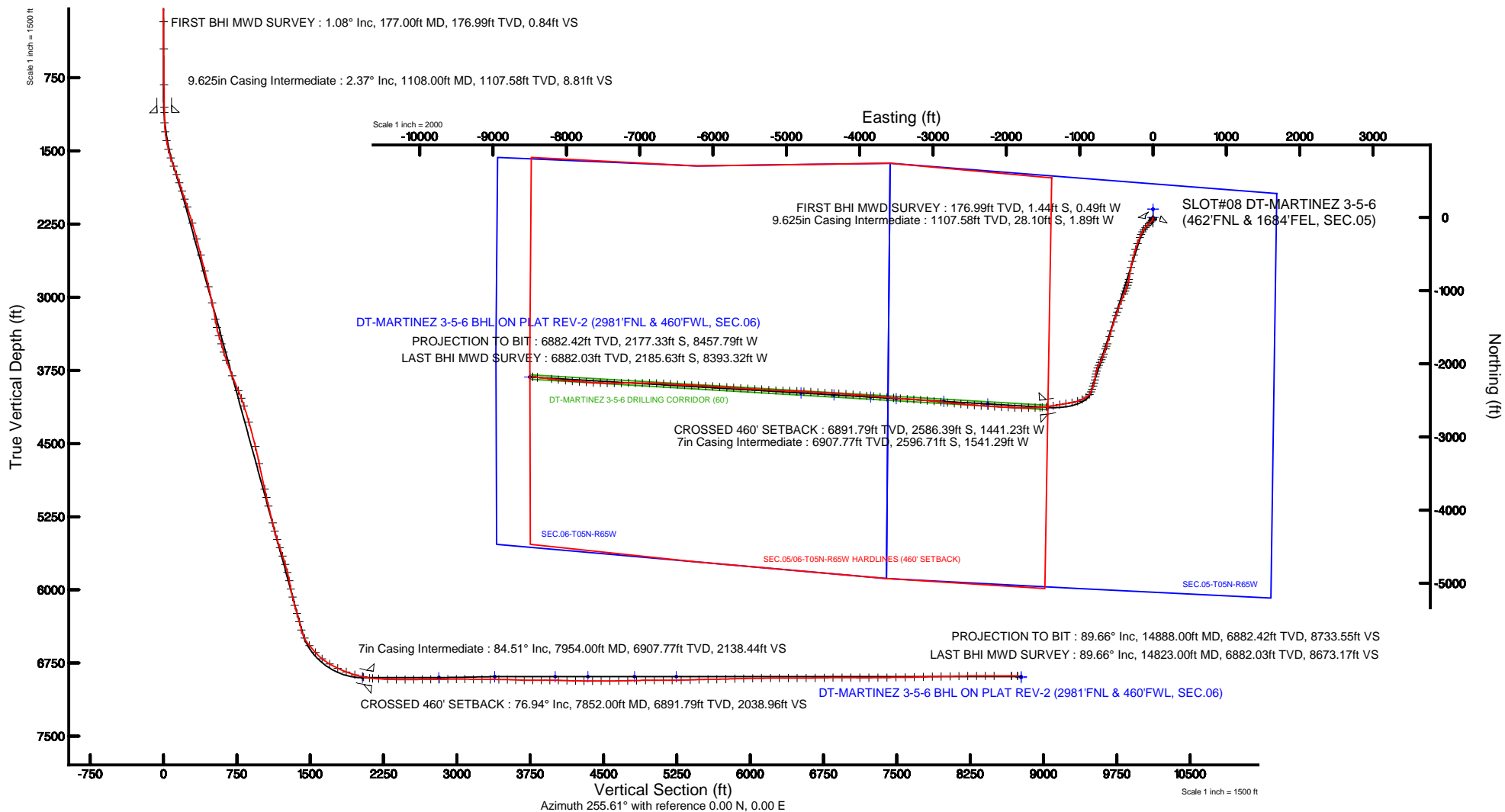




Location:	COLORADO	Slot:	SLOT#08 DT-MARTINEZ 3-5-6 (462'FNL & 1684'FEL, SEC.05)
Field:	WELD COUNTY (NAD83/TRUE NORTH)	Well:	DT-MARTINEZ 3-5-6
Facility:	SEC.05-T05N-R65W	Wellbore:	DT-MARTINEZ 3-5-6 PWB

Plot reference wellpath is DT-MARTINEZ 3-5-6 PWP (REV-B.0)





Actual Wellpath Report

DT-MARTINEZ 3-5-6 AWP

Page 1 of 9



REFERENCE WELLPATH IDENTIFICATION

Operator	EXTRACTION OIL & GAS	Slot	SLOT#08 DT-MARTINEZ 3-5-6 (462'FNL & 1684'FEL, SEC.05)
Area	COLORADO	Well	DT-MARTINEZ 3-5-6
Field	WELD COUNTY (NAD83/TRUE NORTH)	Wellbore	DT-MARTINEZ 3-5-6 AWB
Facility	SEC.05-T05N-R65W		

REPORT SETUP INFORMATION

Projection System	NAD83 / Lambert Colorado SP, Northern Zone (501), US feet	Software System	WellArchitect® 4.1.1
North Reference	True	User	Ingmjmr
Scale	0.999962	Report Generated	3/17/2015 at 11:49:35 AM
Convergence at slot	0.53° East	Database/Source file	Denver/DT-MARTINEZ_3-5-6_AWB.xml

WELLPATH LOCATION

	Local coordinates		Grid coordinates		Geographic coordinates	
	North[ft]	East[ft]	Easting[US ft]	Northing[US ft]	Latitude	Longitude
Slot Location	-214.94	228.27	3227218.33	1402436.78	40°26'06.792"N	104°41'01.428"W
Facility Reference Pt			3226988.10	1402649.61	40°26'08.916"N	104°41'04.380"W
Field Reference Pt			3185481.27	1419166.81	40°28'55.560"N	104°49'59.556"W

WELLPATH DATUM

Calculation method	Minimum curvature	SAVANNA 802 (15'KB) (RKB) to Facility Vertical Datum	4655.00ft
Horizontal Reference Pt	Slot	SAVANNA 802 (15'KB) (RKB) to Mean Sea Level	4655.00ft
Vertical Reference Pt	SAVANNA 802 (15'KB) (RKB)	SAVANNA 802 (15'KB) (RKB) to Mud Line at Slot (SLOT#08 DT-MARTINEZ 3-5-6 (462'FNL & 1684'FEL, SEC.05))	4655.00ft
MD Reference Pt	SAVANNA 802 (15'KB) (RKB)	Section Origin	N 0.00, E 0.00 ft
Field Vertical Reference	Mean Sea Level	Section Azimuth	255.61°



Actual Wellpath Report

DT-MARTINEZ 3-5-6 AWP

Page 2 of 9



REFERENCE WELLPATH IDENTIFICATION

Operator	EXTRACTION OIL & GAS	Slot	SLOT#08 DT-MARTINEZ 3-5-6 (462'FNL & 1684'FEL, SEC.05)
Area	COLORADO	Well	DT-MARTINEZ 3-5-6
Field	WELD COUNTY (NAD83/TRUE NORTH)	Wellbore	DT-MARTINEZ 3-5-6 AWP
Facility	SEC.05-T05N-R65W		

WELLPATH DATA (137 stations) † = interpolated/extrapolated station

MD [ft]	Inclination [°]	Azimuth [°]	TVD [ft]	Vert Sect [ft]	North [ft]	East [ft]	DLS [°/100ft]	Comments
0.00†	0.000	198.850	0.00	0.00	0.00	0.00	0.00	
15.00	0.000	198.850	15.00	0.00	0.00	0.00	0.00	
177.00	1.080	198.850	176.99	0.84	-1.44	-0.49	0.67	FIRST BHI MWD SURVEY
453.00	1.180	179.430	452.94	2.94	-6.75	-1.31	0.14	
823.00	2.050	180.850	822.79	5.59	-17.18	-1.37	0.24	
1053.00	2.290	182.800	1052.62	8.03	-25.88	-1.65	0.11	
1213.00	2.610	200.190	1212.48	11.05	-32.49	-3.06	0.50	
1305.00	7.540	225.600	1304.10	17.47	-38.68	-8.10	5.76	
1397.00	12.180	224.580	1394.71	31.02	-49.83	-19.23	5.05	
1490.00	15.630	229.580	1484.98	50.69	-64.94	-35.66	3.92	
1582.00	19.270	225.210	1572.73	74.93	-83.68	-55.88	4.20	
1674.00	24.190	221.120	1658.17	103.58	-108.59	-79.07	5.59	
1766.00	23.920	219.240	1742.19	134.14	-137.24	-103.26	0.88	
1859.00	22.210	215.130	1827.75	162.69	-166.22	-125.30	2.52	
1951.00	24.640	209.120	1912.18	189.13	-197.20	-144.65	3.70	
2043.00	28.070	205.020	1994.61	216.09	-233.58	-163.14	4.22	
2135.00	28.420	202.430	2075.66	242.96	-273.44	-180.65	1.39	
2320.00	27.740	199.080	2238.89	293.10	-354.83	-211.53	0.93	
2504.00	26.910	197.250	2402.36	338.56	-435.06	-237.87	0.64	
2689.00	26.390	194.850	2567.71	380.61	-514.79	-260.83	0.65	
2873.00	28.440	193.810	2731.04	421.30	-596.87	-281.77	1.14	
3057.00	28.100	191.610	2893.10	461.01	-681.87	-300.95	0.60	
3242.00	27.150	189.890	3057.01	497.48	-766.13	-316.96	0.67	
3430.00	24.490	187.970	3226.23	529.95	-846.99	-329.74	1.48	
3524.00	25.930	191.150	3311.28	546.23	-886.46	-336.41	2.10	
3618.00	28.240	200.170	3395.00	567.72	-927.52	-348.06	5.01	
3712.00	26.790	201.580	3478.36	592.78	-968.10	-363.52	1.69	
3806.00	25.340	200.940	3562.80	616.86	-1006.58	-378.50	1.57	
3900.00	30.330	201.890	3645.90	642.56	-1047.42	-394.55	5.33	
4088.00	34.030	202.160	3804.99	702.00	-1140.22	-432.11	1.97	



Actual Wellpath Report

DT-MARTINEZ 3-5-6 AWP

Page 3 of 9



REFERENCE WELLPATH IDENTIFICATION

Operator	EXTRACTION OIL & GAS	Slot	SLOT#08 DT-MARTINEZ 3-5-6 (462'FNL & 1684'FEL, SEC.05)
Area	COLORADO	Well	DT-MARTINEZ 3-5-6
Field	WELD COUNTY (NAD83/TRUE NORTH)	Wellbore	DT-MARTINEZ 3-5-6 AWB
Facility	SEC.05-T05N-R65W		

WELLPATH DATA (137 stations)

MD [ft]	Inclination [°]	Azimuth [°]	TVD [ft]	Vert Sect [ft]	North [ft]	East [ft]	DLS [°/100ft]	Comments
4276.00	36.390	200.240	3958.59	765.04	-1241.28	-471.25	1.39	
4371.00	33.410	199.410	4036.50	795.61	-1292.40	-489.69	3.18	
4464.00	30.860	198.760	4115.24	822.91	-1339.14	-505.88	2.77	
4654.00	28.330	197.120	4280.44	873.13	-1428.38	-534.82	1.40	
4936.00	25.930	195.940	4531.40	939.26	-1551.63	-571.46	0.87	
5126.00	22.170	196.110	4704.87	978.45	-1626.04	-592.82	1.98	
5409.00	22.140	198.330	4966.98	1034.38	-1727.97	-624.41	0.30	
5503.00	21.790	197.890	5054.16	1053.28	-1761.38	-635.34	0.41	
5597.00	23.540	201.150	5140.90	1073.51	-1795.50	-647.47	2.29	
5786.00	24.810	197.470	5313.33	1116.39	-1868.53	-673.00	1.04	
5881.00	24.230	200.180	5399.77	1137.97	-1905.84	-685.71	1.33	
5975.00	26.460	205.550	5484.73	1162.37	-1942.85	-701.40	3.40	
6069.00	26.970	207.670	5568.69	1190.10	-1980.62	-720.33	1.15	
6164.00	26.820	204.790	5653.42	1218.07	-2019.16	-739.32	1.38	
6259.00	26.990	202.130	5738.14	1244.45	-2058.58	-756.43	1.28	
6353.00	27.630	193.970	5821.69	1267.50	-2099.51	-769.73	4.04	
6447.00	24.210	191.880	5906.23	1286.40	-2139.54	-778.96	3.77	
6541.00	25.760	186.480	5991.44	1302.21	-2178.70	-785.24	2.93	
6635.00	29.190	194.160	6074.85	1320.46	-2221.25	-793.15	5.24	
6729.00	26.180	195.060	6158.08	1341.62	-2263.51	-804.15	3.23	
6823.00	28.490	199.790	6241.59	1364.42	-2304.64	-817.13	3.37	
6918.00	26.400	199.170	6325.89	1388.83	-2345.91	-831.74	2.22	
7013.00	24.030	197.220	6411.84	1410.65	-2384.34	-844.40	2.64	
7107.00	31.850	224.060	6495.14	1441.99	-2420.64	-867.44	15.57	
7201.00	41.350	236.570	6570.62	1492.66	-2455.70	-910.76	12.81	
7296.00	42.400	242.820	6641.39	1553.59	-2487.64	-965.47	4.53	
7390.00	50.940	253.750	6705.94	1621.21	-2512.41	-1028.92	12.39	
7484.00	60.040	260.190	6759.17	1698.49	-2529.61	-1104.29	11.20	
7579.00	64.790	260.210	6803.15	1782.39	-2543.94	-1187.24	5.00	
7673.00	68.070	260.340	6840.73	1868.25	-2558.49	-1272.15	3.49	



Actual Wellpath Report

DT-MARTINEZ 3-5-6 AWP

Page 4 of 9



REFERENCE WELLPATH IDENTIFICATION

Operator	EXTRACTION OIL & GAS	Slot	SLOT#08 DT-MARTINEZ 3-5-6 (462'FNL & 1684'FEL, SEC.05)
Area	COLORADO	Well	DT-MARTINEZ 3-5-6
Field	WELD COUNTY (NAD83/TRUE NORTH)	Wellbore	DT-MARTINEZ 3-5-6 AWP
Facility	SEC.05-T05N-R65W		

WELLPATH DATA (137 stations) † = interpolated/extrapolated station

MD [ft]	Inclination [°]	Azimuth [°]	TVD [ft]	Vert Sect [ft]	North [ft]	East [ft]	DLS [°/100ft]	Comments
7767.00	74.540	260.620	6870.85	1956.93	-2573.20	-1359.92	6.89	
7852.00†	76.936	260.946	6891.79	2038.96	-2586.39	-1441.23	2.84	CROSSED 460' SETBACK
7861.00	77.190	260.980	6893.80	2047.70	-2587.77	-1449.89	2.84	
7922.00	83.010	265.840	6904.29	2107.18	-2594.64	-1509.54	12.35	
8019.00	87.560	268.460	6912.26	2201.87	-2599.44	-1606.06	5.41	
8111.00	87.780	268.450	6916.00	2291.49	-2601.92	-1697.95	0.24	
8204.00	89.350	270.950	6918.33	2381.65	-2602.40	-1790.91	3.17	
8296.00	90.150	272.440	6918.73	2470.04	-2599.68	-1882.87	1.84	
8388.00	90.250	273.080	6918.41	2557.95	-2595.25	-1974.76	0.70	
8480.00	90.550	273.550	6917.77	2645.58	-2589.93	-2066.60	0.61	
8573.00	90.340	273.380	6917.05	2734.10	-2584.31	-2159.43	0.29	
8665.00	90.460	273.800	6916.41	2821.60	-2578.55	-2251.25	0.47	
8757.00	90.950	274.100	6915.27	2908.92	-2572.21	-2343.02	0.62	
8849.00	90.120	274.360	6914.42	2996.10	-2565.43	-2434.77	0.95	
8941.00	89.110	275.230	6915.03	3082.98	-2557.74	-2526.44	1.45	
9034.00	89.420	275.630	6916.23	3170.46	-2548.94	-2619.02	0.54	
9126.00	89.510	275.850	6917.09	3256.84	-2539.74	-2710.55	0.26	
9218.00	89.630	276.070	6917.78	3343.09	-2530.19	-2802.05	0.27	
9310.00	89.940	276.150	6918.12	3429.26	-2520.39	-2893.53	0.35	
9403.00	88.150	275.450	6919.67	3516.53	-2511.00	-2986.03	2.07	
9495.00	87.630	275.170	6923.06	3603.08	-2502.49	-3077.58	0.64	
9587.00	88.390	274.920	6926.25	3689.78	-2494.40	-3169.16	0.87	
9679.00	90.860	274.450	6926.86	3776.72	-2486.89	-3260.85	2.73	
9771.00	90.530	274.010	6925.74	3863.89	-2480.10	-3352.59	0.60	
9864.00	89.350	274.780	6925.84	3951.94	-2472.98	-3445.31	1.52	
9956.00	88.420	274.290	6927.63	4038.94	-2465.70	-3537.01	1.14	
10048.00	88.670	274.440	6929.96	4126.03	-2458.70	-3628.71	0.32	
10140.00	88.860	274.420	6931.95	4213.09	-2451.60	-3720.41	0.21	
10232.00	89.230	274.730	6933.48	4300.08	-2444.26	-3812.11	0.52	
10325.00	89.900	274.480	6934.19	4388.01	-2436.80	-3904.80	0.77	



Actual Wellpath Report

DT-MARTINEZ 3-5-6 AWP

Page 5 of 9



REFERENCE WELLPATH IDENTIFICATION

Operator	EXTRACTION OIL & GAS	Slot	SLOT#08 DT-MARTINEZ 3-5-6 (462'FNL & 1684'FEL, SEC.05)
Area	COLORADO	Well	DT-MARTINEZ 3-5-6
Field	WELD COUNTY (NAD83/TRUE NORTH)	Wellbore	DT-MARTINEZ 3-5-6 AWP
Facility	SEC.05-T05N-R65W		

WELLPATH DATA (137 stations)

MD [ft]	Inclination [°]	Azimuth [°]	TVD [ft]	Vert Sect [ft]	North [ft]	East [ft]	DLS [°/100ft]	Comments
10417.00	90.330	274.630	6934.00	4475.02	-2429.49	-3996.51	0.50	
10513.00	90.120	274.760	6933.62	4565.74	-2421.63	-4092.19	0.26	
10608.00	90.980	273.620	6932.71	4655.78	-2414.69	-4186.93	1.50	
10704.00	91.380	273.970	6930.74	4746.96	-2408.34	-4282.70	0.55	
10800.00	90.980	273.280	6928.76	4838.23	-2402.27	-4378.49	0.83	
10896.00	90.680	273.350	6927.37	4929.67	-2396.72	-4474.31	0.32	
10991.00	90.370	273.280	6926.50	5020.17	-2391.23	-4569.15	0.33	
11087.00	90.060	273.090	6926.14	5111.68	-2385.89	-4665.00	0.38	
11182.00	89.690	273.180	6926.34	5202.27	-2380.70	-4759.86	0.40	
11278.00	91.510	272.710	6925.34	5293.90	-2375.77	-4855.72	1.96	
11374.00	91.600	272.330	6922.73	5385.71	-2371.55	-4951.60	0.41	
11470.00	91.780	272.370	6919.90	5477.60	-2367.61	-5047.47	0.19	
11566.00	90.860	273.020	6917.69	5569.34	-2363.10	-5143.34	1.17	
11661.00	91.260	273.220	6915.93	5659.92	-2357.93	-5238.18	0.47	
11757.00	91.540	273.240	6913.59	5751.38	-2352.52	-5334.00	0.29	
11853.00	91.750	273.510	6910.83	5842.77	-2346.87	-5429.79	0.36	
11949.00	91.080	273.680	6908.46	5934.05	-2340.86	-5525.58	0.72	
12045.00	90.800	273.810	6906.89	6025.26	-2334.59	-5621.36	0.32	
12141.00	90.550	273.640	6905.76	6116.49	-2328.35	-5717.15	0.31	
12237.00	90.210	273.620	6905.12	6207.78	-2322.27	-5812.95	0.35	
12333.00	89.840	273.730	6905.08	6299.05	-2316.12	-5908.76	0.40	
12429.00	90.030	274.310	6905.19	6390.13	-2309.39	-6004.52	0.64	
12525.00	90.150	273.410	6905.04	6481.30	-2302.93	-6100.30	0.95	
12621.00	90.770	272.170	6904.26	6573.01	-2298.25	-6196.18	1.44	
12717.00	90.890	272.290	6902.87	6664.98	-2294.52	-6292.10	0.18	
12813.00	90.890	272.680	6901.38	6756.84	-2290.36	-6388.00	0.41	
12909.00	90.550	273.630	6900.18	6848.36	-2285.07	-6483.84	1.05	
13005.00	90.090	274.050	6899.64	6939.54	-2278.64	-6579.62	0.65	
13100.00	89.440	273.230	6900.03	7029.87	-2272.61	-6674.43	1.10	
13196.00	89.720	272.130	6900.73	7121.63	-2268.12	-6770.32	1.18	



Actual Wellpath Report

DT-MARTINEZ 3-5-6 AWP

Page 6 of 9



REFERENCE WELLPATH IDENTIFICATION

Operator	EXTRACTION OIL & GAS	Slot	SLOT#08 DT-MARTINEZ 3-5-6 (462'FNL & 1684'FEL, SEC.05)
Area	COLORADO	Well	DT-MARTINEZ 3-5-6
Field	WELD COUNTY (NAD83/TRUE NORTH)	Wellbore	DT-MARTINEZ 3-5-6 AWP
Facility	SEC.05-T05N-R65W		

WELLPATH DATA (137 stations)

MD [ft]	Inclination [°]	Azimuth [°]	TVD [ft]	Vert Sect [ft]	North [ft]	East [ft]	DLS [°/100ft]	Comments
13292.00	90.430	271.390	6900.61	7213.84	-2265.18	-6866.27	1.07	
13388.00	90.210	268.840	6900.07	7306.77	-2264.98	-6962.27	2.67	
13484.00	91.230	273.010	6898.86	7399.33	-2263.43	-7058.22	4.47	
13580.00	90.670	269.450	6897.27	7491.75	-2261.37	-7154.17	3.75	
13676.00	89.930	268.220	6896.77	7585.20	-2263.33	-7250.15	1.50	
13771.00	92.060	269.970	6895.12	7677.56	-2264.83	-7345.11	2.90	
13867.00	92.030	271.020	6891.69	7770.27	-2264.00	-7441.05	1.09	
13963.00	90.890	272.430	6889.25	7862.47	-2261.11	-7536.97	1.89	
14058.00	90.770	272.520	6887.87	7953.37	-2257.01	-7631.87	0.16	
14154.00	91.330	274.150	6886.11	8044.79	-2251.42	-7727.69	1.80	
14249.00	90.860	274.570	6884.30	8134.73	-2244.20	-7822.39	0.66	
14345.00	90.830	274.750	6882.88	8225.46	-2236.40	-7918.07	0.19	
14440.00	90.340	275.500	6881.91	8314.99	-2227.92	-8012.68	0.94	
14535.00	90.190	276.170	6881.47	8404.13	-2218.26	-8107.19	0.72	
14631.00	89.940	276.070	6881.36	8494.04	-2208.03	-8202.64	0.28	
14823.00	89.660	277.330	6882.03	8673.17	-2185.63	-8393.32	0.67	LAST BHI MWD SURVEY
14888.00	89.660	277.330	6882.42	8733.55	-2177.33	-8457.79	0.00	PROJECTION TO BIT

HOLE & CASING SECTIONS - Ref Wellbore: DT-MARTINEZ 3-5-6 AWP

Ref Wellpath: DT-MARTINEZ 3-5-6 AWP

String/Diameter	Start MD [ft]	End MD [ft]	Interval [ft]	Start TVD [ft]	End TVD [ft]	Start N/S [ft]	Start E/W [ft]	End N/S [ft]	End E/W [ft]
13.5in Open Hole	15.00	1108.00	1093.00	15.00	1107.58	0.00	0.00	-28.10	-1.89
9.625in Casing Intermediate	15.00	1108.00	1093.00	15.00	1107.58	0.00	0.00	-28.10	-1.89
8.75in Open Hole	1108.00	7987.00	6879.00	1107.58	6910.48	-28.10	-1.89	-2598.34	-1574.13
7in Casing Intermediate	15.00	7954.00	7939.00	15.00	6907.77	0.00	0.00	-2596.71	-1541.29
6.125in Open Hole	7987.00	14888.00	6901.00	6910.48	6882.42	-2598.34	-1574.13	-2177.33	-8457.79



Actual Wellpath Report

DT-MARTINEZ 3-5-6 AWP

Page 7 of 9



REFERENCE WELLPATH IDENTIFICATION

Operator	EXTRACTION OIL & GAS	Slot	SLOT#08 DT-MARTINEZ 3-5-6 (462'FNL & 1684'FEL, SEC.05)
Area	COLORADO	Well	DT-MARTINEZ 3-5-6
Field	WELD COUNTY (NAD83/TRUE NORTH)	Wellbore	DT-MARTINEZ 3-5-6 AWB
Facility	SEC.05-T05N-R65W		

TARGETS

Name	TVD [ft]	North [ft]	East [ft]	Grid East [US ft]	Grid North [US ft]	Latitude	Longitude	Shape
SEC.05-T05N-R65W	0.00	112.94	0.00	3227217.29	1402549.71	40°26'07.908"N	104°41'01.428"W	polygon
SEC.06-T05N-R65W	0.00	112.94	0.00	3227217.29	1402549.71	40°26'07.908"N	104°41'01.428"W	polygon
DT-MARTINEZ 3-5-6 BHL ON PLAT REV-2 (2981'FNL & 460'FWL, SEC.06)	6890.00	-2180.78	-8496.81	3218742.29	1400177.97	40°25'45.228"N	104°42'51.300"W	point
DT-MARTINEZ 3-5-6 TARGET 3	6890.00	-2513.80	-2852.64	3224389.06	1399896.93	40°25'41.950"N	104°41'38.315"W	point
DT-MARTINEZ 3-5-6 TARGET 4	6890.00	-2475.52	-3501.51	3223739.90	1399929.23	40°25'42.327"N	104°41'46.705"W	point
DT-MARTINEZ 3-5-6 TARGET 5	6890.00	-2454.90	-3850.91	3223390.33	1399946.64	40°25'42.531"N	104°41'51.223"W	point
DT-MARTINEZ 3-5-6 TARGET 6	6890.00	-2425.45	-4350.04	3222890.97	1399971.49	40°25'42.821"N	104°41'57.678"W	point
DT-MARTINEZ 3-5-6 TARGET 7	6890.00	-2398.95	-4799.26	3222441.55	1399993.85	40°25'43.082"N	104°42'03.487"W	point
DT-MARTINEZ 3-5-6 BHL ON PLAT REV-1 (2981'FNL & 460'FWL, SEC.06)	6900.00	-2180.78	-8496.81	3218742.29	1400177.97	40°25'45.228"N	104°42'51.300"W	point
DT-MARTINEZ 3-5-6 DRILLING CORRIDOR (60')	6900.00	0.00	0.00	3227218.33	1402436.78	40°26'06.792"N	104°41'01.428"W	polygon
DT-MARTINEZ 3-5-6 LANDING POINT	6900.00	-2597.52	-1433.79	3225808.57	1399826.28	40°25'41.124"N	104°41'19.968"W	point
DT-MARTINEZ 3-5-6 TARGET 2	6900.00	-2549.14	-2253.69	3224988.29	1399867.11	40°25'41.601"N	104°41'30.570"W	point



Actual Wellpath Report

DT-MARTINEZ 3-5-6 AWP

Page 8 of 9



REFERENCE WELLPATH IDENTIFICATION

Operator	EXTRACTION OIL & GAS	Slot	SLOT#08 DT-MARTINEZ 3-5-6 (462'FNL & 1684'FEL, SEC.05)
Area	COLORADO	Well	DT-MARTINEZ 3-5-6
Field	WELD COUNTY (NAD83/TRUE NORTH)	Wellbore	DT-MARTINEZ 3-5-6 AWB
Facility	SEC.05-T05N-R65W		

TARGETS

Name	TVD [ft]	North [ft]	East [ft]	Grid East [US ft]	Grid North [US ft]	Latitude	Longitude	Shape
SEC.05/06-T05N-R65W HARDLINES (460' SETBACK)	7090.00	112.94	0.00	3227217.29	1402549.71	40°26'07.908"N	104°41'01.428"W	polygon

WELLPATH COMPOSITION - Ref Wellbore: DT-MARTINEZ 3-5-6 AWB Ref Wellpath: DT-MARTINEZ 3-5-6 AWP

Start MD [ft]	End MD [ft]	Positional Uncertainty Model	Log Name/Comment	Wellbore
15.00	1053.00	NaviTrak (Standard)	BHI MWD/NAVITRAK (STD) 13.5" HOLE <177-1053>	DT-MARTINEZ 3-5-6 AWB
1053.00	7922.00	NaviTrak (Standard)	BHI MWD/NAVITRAK (STD) 8.75" HOLE <1213-7922>	DT-MARTINEZ 3-5-6 AWB
7922.00	14823.00	NaviTrak (Standard)	BHI MWD/NAVITRAK (STD) 6.125" HOLE <8019-14823>	DT-MARTINEZ 3-5-6 AWB
14823.00	14888.00	Blind Drilling (std)	Projection to bit	DT-MARTINEZ 3-5-6 AWB



Actual Wellpath Report

DT-MARTINEZ 3-5-6 AWP

Page 9 of 9



REFERENCE WELLPATH IDENTIFICATION

Operator	EXTRACTION OIL & GAS	Slot	SLOT#08 DT-MARTINEZ 3-5-6 (462'FNL & 1684'FEL, SEC.05)
Area	COLORADO	Well	DT-MARTINEZ 3-5-6
Field	WELD COUNTY (NAD83/TRUE NORTH)	Wellbore	DT-MARTINEZ 3-5-6 AWB
Facility	SEC.05-T05N-R65W		

WELLPATH COMMENTS

MD [ft]	Inclination [°]	Azimuth [°]	TVD [ft]	Comment
177.00	1.080	198.850	176.99	FIRST BHI MWD SURVEY
7852.00	76.936	260.946	6891.79	CROSSED 460' SETBACK
14823.00	89.660	277.330	6882.03	LAST BHI MWD SURVEY
14888.00	89.660	277.330	6882.42	PROJECTION TO BIT