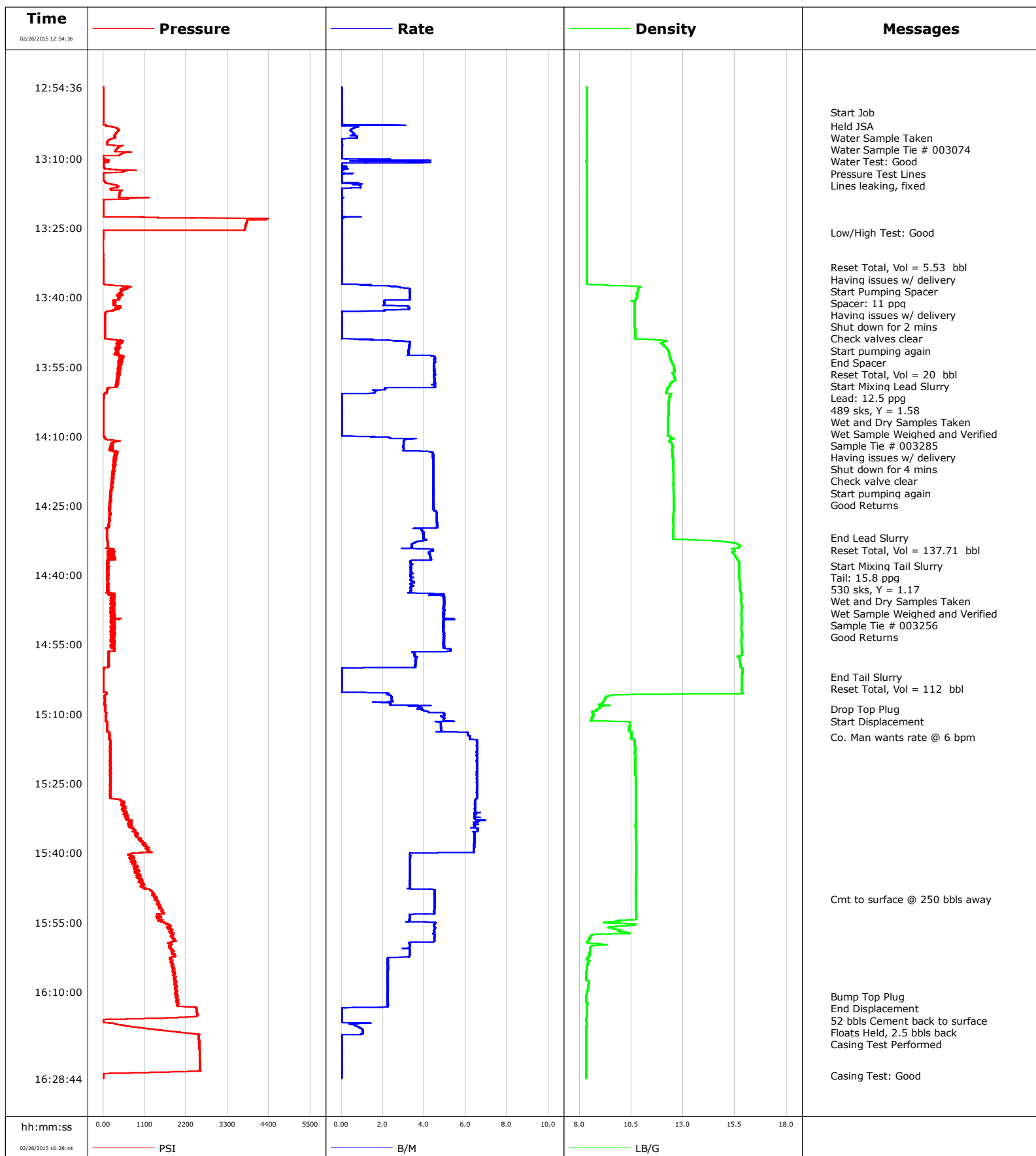


**Well** Martinez 3-5-6  
**Field** Wattenberg  
**Engineer** Matlock/Hartsfield  
**Country** United States

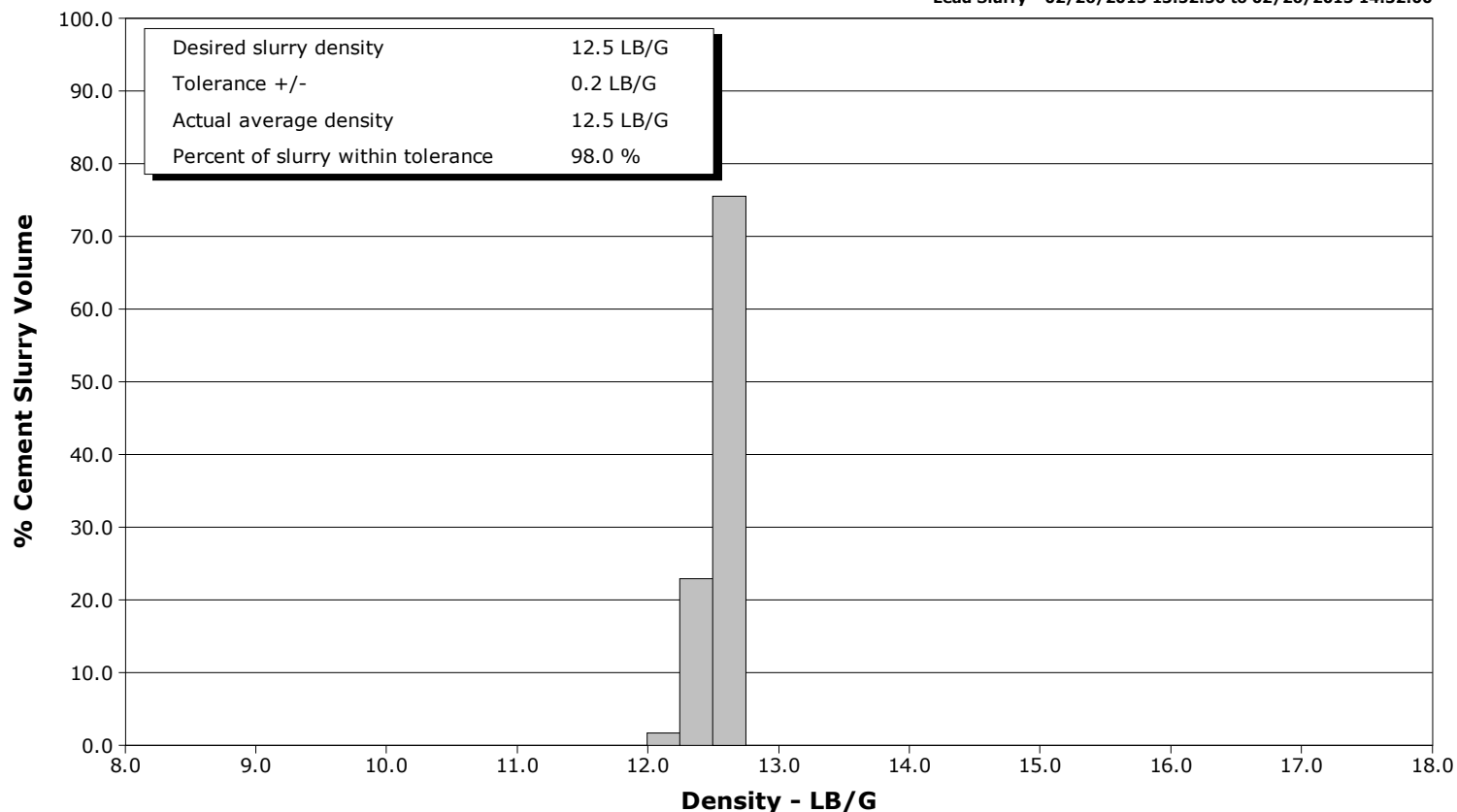
**Client** Extraction Oil Gas  
**SIR No.** D8FO-0014  
**Job Type** Intermediate  
**Job Date** 02-26-2015



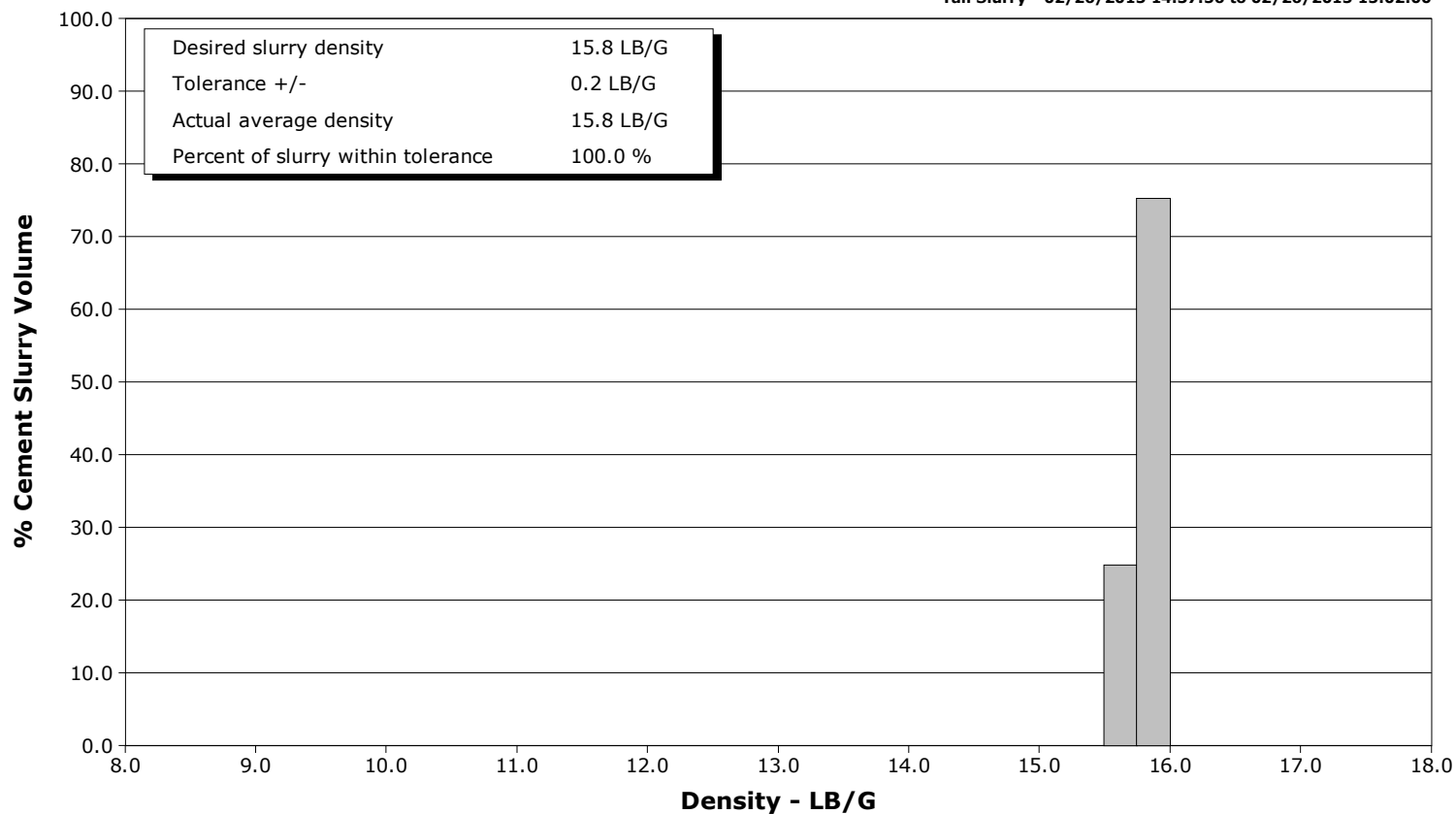
**Well** Martinez 3-5-6  
**Field** Wattenberg  
**Engineer** Matlock/Hartsfield  
**Country** United States

**Client** Extraction Oil Gas  
**SIR No.** D8FO-0014  
**Job Type** Intermediate  
**Job Date** 02-26-2015

**Lead Slurry - 02/26/2015 13:52:56 to 02/26/2015 14:32:00**



**Tail Slurry - 02/26/2015 14:37:56 to 02/26/2015 15:02:00**



# Cementing Service Report

				Customer Extraction Oil & Gas				Job Number D8FO-0014			
Well Martinez 3-5-6			Location (legal)			Schlumberger Location Cheyenne			Job Start Feb/25/2015		
Field Wattenberg		Formation Name/Type		Deviation deg		Bit Size 8.8 in		Well MD 7860.0 ft		Well TVD 6900.0 ft	
County Weld		State/Province CO		BHP psi		BHST 204 degF		BHCT 175 degF		Pore Press. Gradient lb/gal	
Well Master 0631619613		API/UWI									
Rig Name Savanna 802		Drilled For Oil		Service Via Land		Casing/ Liner					
						Depth, ft		Size, in		Weight, lb/ft	
										Grade	
										Thread	
Offshore Zone		Well Class New		Well Type Development		7860.0		7.0		26.0	
						0.0		0.0		0.0	
Drilling Fluid Type		Max. Density lb/gal		Plastic Viscosity cP		Tubing/Drill Pipe					
						T/D		Depth, ft		Size, in	
										Weight, lb/ft	
										Grade	
										Thread	
Service Line Cementing		Job Type Intermediate						0.0			
								0.0			
Max. Allowed Tub. Press psi		Max. Allowed Ann. Press psi		WH Connection Single Cement head		Perforations/Open Hole					
						Top, ft		Bottom, ft		shot/ft	
										No. of Shots	
										Total Interval ft	
										Diameter in	
						Treat Down Casing		Displacement 302.7 bbl		Packer Type	
										Packer Depth ft	
						Tubing Vol. bbl		Casing Vol. 304.5 bbl		Annular Vol. bbl	
										Openhole Vol. bbl	
Casing/Tubing Secured <input checked="" type="checkbox"/>		1 Hole Vol. Circulated prior to Cement <input checked="" type="checkbox"/>		Casing Tools				Squeeze Job			
Lift Pressure psi				Shoe Type Float				Squeeze Type			
Pipe Rotated <input type="checkbox"/>		Pipe Reciprocated <input type="checkbox"/>		Shoe Depth 7952.0 ft				Tool Type			
No. Centralizers 48		Top Plugs 1		Bottom Plugs		Stage Tool Type				Tool Depth ft	
Cement Head Type Single						Stage Tool Depth ft				Tail Pipe Size in	
Job Scheduled For Feb/25/2015 21:30		Arrived on Location Feb/25/2015 21:30		Leave Location Feb/26/2015 17:30		Collar Type Float				Tail Pipe Depth ft	
						Collar Depth 7911.0 ft				Sqz. Total Vol. bbl	
Date	Time 24-hr clock	Treating Pressure PSI	Flow Rate B/M	Density LB/G	Volume BBL	Message					
02/26/2015	12:54:36	3	0.0	8.36	0.0	End Job					
02/26/2015	12:56:16	3	0.0	8.36	0.0						
02/26/2015	12:57:56	3	0.0	8.36	0.0						
02/26/2015	12:59:36	3	0.0	8.36	0.0						
02/26/2015	13:00:00	3	0.0	8.36	0.0	Start Job					
02/26/2015	13:01:16	3	0.0	8.36	0.0						
02/26/2015	13:02:56	71	0.1	8.36	0.3						
02/26/2015	13:03:00	88	0.1	8.36	0.3	Held JSA					
02/26/2015	13:04:36	331	0.6	8.36	1.2						
02/26/2015	13:05:00	302	0.7	8.36	1.5	Water Sample Taken					
02/26/2015	13:06:00	155	0.0	8.35	2.0	Water Sample Tie # 003074					
02/26/2015	13:06:16	122	0.0	8.35	2.0						
02/26/2015	13:07:00	112	0.0	8.35	2.0	Water Test: Good					
02/26/2015	13:07:56	366	0.0	8.35	2.0						
02/26/2015	13:09:36	1	0.0	8.36	2.0						
02/26/2015	13:10:00	2	0.0	8.35	2.0	Pressure Test Lines					
02/26/2015	13:11:16	13	0.0	8.35	4.4						
02/26/2015	13:12:56	513	0.0	8.35	4.4						
02/26/2015	13:14:36	3	0.0	8.35	4.5						
02/26/2015	13:15:00	43	0.0	8.35	4.5	Lines leaking, fixed					
02/26/2015	13:16:16	370	0.9	8.36	5.3						

Well			Field	Job Start		Customer	Job Number
Martinez 3-5-6			Wattenberg	Feb/25/2015		Extraction Oil & Gas	D8FO-0014
Date	Time 24-hr clock	Treating Pressure PSI	Flow Rate B/M	Density LB/G	Volume BBL	Message	
02/26/2015	13:19:36	2	0.0	8.35	5.4		
02/26/2015	13:21:16	2	0.0	8.35	5.4		
02/26/2015	13:22:56	4392	0.1	8.35	5.5		
02/26/2015	13:24:36	3777	0.0	8.35	5.5		
02/26/2015	13:26:00	0	0.0	8.35	5.5	Low/High Test: Good	
02/26/2015	13:26:16	0	0.0	8.35	5.5		
02/26/2015	13:27:56	-3	0.0	8.35	5.5		
02/26/2015	13:29:36	-2	0.0	8.35	5.5		
02/26/2015	13:31:16	-0	0.0	8.35	5.5		
02/26/2015	13:32:56	1	0.0	8.35	5.5		
02/26/2015	13:33:32	1	0.0	8.35	5.5	Reset Total, Vol = 5.53 bbl	
02/26/2015	13:34:00	2	0.0	8.35	0.0	Having issues w/ delivery	
02/26/2015	13:34:36	2	0.0	8.35	0.0		
02/26/2015	13:36:16	4	0.0	8.35	0.0		
02/26/2015	13:37:00	7	0.0	8.35	0.0	Start Pumping Spacer	
02/26/2015	13:37:56	617	2.9	10.85	1.5		
02/26/2015	13:38:00	607	3.1	10.86	1.7	Spacer: 11 ppg	
02/26/2015	13:39:36	370	3.3	10.78	7.0		
02/26/2015	13:41:16	293	2.1	10.67	11.6		
02/26/2015	13:42:00	345	3.3	10.67	13.3	Having issues w/ delivery	
02/26/2015	13:42:56	239	2.1	10.67	16.1		
02/26/2015	13:44:36	43	0.0	10.67	16.3		
02/26/2015	13:46:16	45	0.0	10.67	16.3		
02/26/2015	13:47:00	49	0.0	10.68	16.3	End Spacer	
02/26/2015	13:47:20	50	0.0	10.68	16.3	Reset Total, Vol = 20 bbl	
02/26/2015	13:47:56	51	0.0	10.68	0.0		
02/26/2015	13:49:36	392	3.3	12.06	1.3		
02/26/2015	13:51:16	354	3.3	12.25	6.8		
02/26/2015	13:52:56	467	4.5	12.37	12.6	Start Mixing Lead Slurry	
02/26/2015	13:54:36	460	4.5	12.52	20.1		
02/26/2015	13:55:00	397	4.5	12.55	21.9	Lead: 12.5 ppg	
02/26/2015	13:56:00	401	4.5	12.58	26.4	489 sks, Y = 1.58	
02/26/2015	13:56:16	414	4.5	12.51	27.6		
02/26/2015	13:57:00	441	4.5	12.55	30.9	Wet and Dry Samples Taken	
02/26/2015	13:57:56	403	4.5	12.60	35.1		
02/26/2015	13:58:00	382	4.5	12.61	35.4	Wet Sample Weighed and Verified	
02/26/2015	13:59:00	380	4.5	12.35	39.9	Sample Tie # 003285	
02/26/2015	13:59:36	125	2.1	12.26	42.4		
02/26/2015	14:00:00	94	1.8	12.21	43.2	Having issues w/ delivery	
02/26/2015	14:01:16	16	0.0	12.36	44.5		
02/26/2015	14:02:56	5	0.0	12.30	44.5		
02/26/2015	14:04:36	4	0.0	12.29	44.5		
02/26/2015	14:06:16	3	0.0	12.28	44.5		
02/26/2015	14:07:56	7	0.0	12.27	44.5		
02/26/2015	14:09:36	2	0.0	12.26	44.5		
02/26/2015	14:10:00	19	0.3	12.24	44.5	Good Returns	
02/26/2015	14:11:16	299	3.0	12.37	47.8		
02/26/2015	14:12:56	218	3.0	12.47	52.8		
02/26/2015	14:14:36	329	4.4	12.49	59.7		
02/26/2015	14:16:16	266	4.4	12.50	67.1		
02/26/2015	14:17:56	260	4.4	12.52	74.5		
02/26/2015	14:19:36	232	4.4	12.53	81.9		
02/26/2015	14:21:16	201	4.4	12.53	89.3		
02/26/2015	14:22:56	194	4.4	12.56	96.7		

Well			Field		Job Start		Customer		Job Number	
Martinez 3-5-6			Wattenberg		Feb/25/2015		Extraction Oil & Gas		D8FO-0014	
Date	Time 24-hr clock	Treating Pressure PSI		Flow Rate B/M	Density LB/G		Volume BBL		Message	
02/26/2015	14:26:16	177		4.6	12.55		111.5			
02/26/2015	14:27:56	179		4.6	12.52		119.2			
02/26/2015	14:29:36	160		4.6	12.52		126.9			
02/26/2015	14:31:16	97		3.9	12.52		133.6			
02/26/2015	14:32:00	96		4.0	12.52		136.5		End Lead Slurry	
02/26/2015	14:32:18	104		4.0	12.71		137.6		Reset Total, Vol = 137.71 bbl	
02/26/2015	14:32:56	123		3.6	15.22		2.4			
02/26/2015	14:34:36	156		4.4	15.44		8.3			
02/26/2015	14:36:16	191		4.3	15.56		15.5			
02/26/2015	14:37:56	120		3.4	15.69		21.6		Start Mixing Tail Slurry	
02/26/2015	14:39:36	128		3.4	15.69		27.2			
02/26/2015	14:40:00	105		3.3	15.70		28.5		Tail: 15.8 ppg	
02/26/2015	14:41:00	136		3.3	15.72		31.9		530 sks, Y = 1.17	
02/26/2015	14:41:16	104		3.4	15.73		32.8			
02/26/2015	14:42:00	106		3.4	15.74		35.3		Wet and Dry Samples Taken	
02/26/2015	14:42:56	132		3.4	15.74		38.5			
02/26/2015	14:43:00	116		3.3	15.74		38.7		Wet Sample Weighed and Verified	
02/26/2015	14:44:00	318		4.3	15.79		42.1		Sample Tie # 003256	
02/26/2015	14:44:36	283		4.9	15.81		44.9			
02/26/2015	14:45:00	294		5.0	15.80		46.9		Good Returns	
02/26/2015	14:46:16	300		5.0	15.81		53.2			
02/26/2015	14:47:56	194		5.0	15.82		61.4			
02/26/2015	14:49:36	205		5.2	15.82		69.7			
02/26/2015	14:51:16	293		4.9	15.81		77.9			
02/26/2015	14:52:56	321		5.0	15.84		86.2			
02/26/2015	14:54:36	259		4.9	15.81		94.4			
02/26/2015	14:56:16	317		5.3	15.84		102.8			
02/26/2015	14:57:56	144		3.6	15.73		109.2			
02/26/2015	14:59:36	146		3.6	15.77		115.1			
02/26/2015	15:01:16	6		0.0	15.85		116.7			
02/26/2015	15:02:00	6		0.0	15.84		116.7		End Tail Slurry	
02/26/2015	15:02:56	5		0.0	15.84		116.7			
02/26/2015	15:03:36	5		0.0	15.84		116.7		Reset Total, Vol = 112 bbl	
02/26/2015	15:04:36	4		0.0	15.84		0.0			
02/26/2015	15:06:16	41		2.4	9.32		2.0			
02/26/2015	15:07:56	34		2.4	8.98		6.0			
02/26/2015	15:09:00	56		3.7	8.83		9.7		Drop Top Plug	
02/26/2015	15:09:36	61		4.2	8.67		12.1			
02/26/2015	15:10:00	78		5.0	8.68		14.0		Start Displacement	
02/26/2015	15:11:16	73		4.9	8.59		20.3			
02/26/2015	15:12:56	108		4.8	10.40		28.4			
02/26/2015	15:14:36	159		6.1	10.51		37.2			
02/26/2015	15:15:00	166		6.2	10.51		39.7		Co. Man wants rate @ 6 bpm	
02/26/2015	15:16:16	193		6.5	10.67		47.8			
02/26/2015	15:17:56	194		6.5	10.68		58.7			
02/26/2015	15:19:36	191		6.5	10.69		69.6			
02/26/2015	15:21:16	185		6.5	10.70		80.5			
02/26/2015	15:22:56	189		6.5	10.70		91.4			
02/26/2015	15:24:36	204		6.5	10.70		102.3			
02/26/2015	15:26:16	194		6.5	10.71		113.2			
02/26/2015	15:27:56	191		6.5	10.71		124.1			
02/26/2015	15:29:36	483		6.4	10.72		134.9			
02/26/2015	15:31:16	620		6.4	10.71		145.7			
02/26/2015	15:32:56	653		6.8	10.71		156.4			

Well			Field	Job Start	Customer	Job Number
Martinez 3-5-6			Wattenberg	Feb/25/2015	Extraction Oil & Gas	D8FO-0014
Date	Time 24-hr clock	Treating Pressure PSI	Flow Rate B/M	Density LB/G	Volume BBL	Message
02/26/2015	15:36:16	862	6.4	10.72	178.1	
02/26/2015	15:37:56	1116	6.4	10.73	188.8	
02/26/2015	15:39:36	1192	6.4	10.74	199.5	
02/26/2015	15:41:16	785	3.3	10.73	206.2	
02/26/2015	15:42:56	806	3.3	10.74	211.8	
02/26/2015	15:44:36	946	3.3	10.74	217.3	
02/26/2015	15:46:16	935	3.3	10.73	222.8	
02/26/2015	15:47:56	1244	4.5	10.72	228.4	
02/26/2015	15:49:36	1390	4.5	10.72	235.9	
02/26/2015	15:50:00	1393	4.5	10.72	237.7	Cmt to surface @ 250 bbls away
02/26/2015	15:51:16	1485	4.5	10.72	243.4	
02/26/2015	15:52:56	1601	4.5	10.73	250.9	
02/26/2015	15:54:36	1506	3.3	10.01	256.8	
02/26/2015	15:56:16	1773	4.5	9.61	263.8	
02/26/2015	15:57:56	1801	4.5	8.55	271.3	
02/26/2015	15:59:36	1736	3.3	8.73	278.4	
02/26/2015	16:01:16	1883	3.3	8.51	283.9	
02/26/2015	16:02:56	1773	2.2	8.37	289.0	
02/26/2015	16:04:36	1819	2.2	8.38	292.7	
02/26/2015	16:06:16	1889	2.2	8.33	296.4	
02/26/2015	16:07:56	1901	2.2	8.47	300.2	
02/26/2015	16:09:36	1955	2.2	8.41	303.9	
02/26/2015	16:11:00	1978	2.2	8.33	307.0	Bump Top Plug
02/26/2015	16:11:16	1933	2.2	8.33	307.6	
02/26/2015	16:11:30	1976	2.2	8.32	308.2	End Displacement
02/26/2015	16:12:00	1992	2.2	8.32	309.3	52 bbls Cement back to surface
02/26/2015	16:12:56	1955	2.2	8.36	311.4	
02/26/2015	16:13:00	1973	2.2	8.36	311.5	Floats Held, 2.5 bbls back
02/26/2015	16:14:36	2488	0.0	8.34	312.4	
02/26/2015	16:16:16	5	0.0	8.33	312.5	
02/26/2015	16:17:56	1105	1.0	8.33	313.4	
02/26/2015	16:19:00	2300	1.0	8.32	314.5	Casing Test Performed
02/26/2015	16:19:36	2533	0.0	8.32	314.8	
02/26/2015	16:21:16	2545	0.0	8.32	314.8	
02/26/2015	16:22:56	2560	0.0	8.32	314.8	
02/26/2015	16:24:36	2561	0.0	8.33	314.8	
02/26/2015	16:26:16	2571	0.0	8.33	314.8	
02/26/2015	16:27:56	3	0.0	8.33	314.8	

<b>Well</b> Martinez 3-5-6	<b>Field</b> Wattenberg	<b>Job Start</b> Feb/25/2015	<b>Customer</b> Extraction Oil & Gas	<b>Job Number</b> D8FO-0014
-------------------------------	----------------------------	---------------------------------	---	--------------------------------

Post Job Summary

Average Pump Rates, bbl/min					Volume of Fluid Injected, bbl				
Slurry	N2	Mud	Maximum Rate		Total Slurry 249.0	Mud	Spacer 20.0	N2	
Treating Pressure Summary, psi					Breakdown Fluid				
Maximum	Final 0	Average	Bump Plug to 2500	Breakdown	Type		Volume bbl		Density lb/gal
Avg. N2 Percent %		Designed Slurry Volume 247.0 bbl		Displacement 302.7 bbl		Mix Water Temp 65 degF		Cement Circulated to Surface? <input checked="" type="checkbox"/>	
								Volume 52.0 bbl	
								Washed Thru Perfs <input type="checkbox"/>	
								To ft	
Customer or Authorized Representative Sean				Schlumberger Supervisor Matlock/Hartsfield				Circulation Lost <input type="checkbox"/>	
								Job Completed <input checked="" type="checkbox"/>	
								-	
								-	