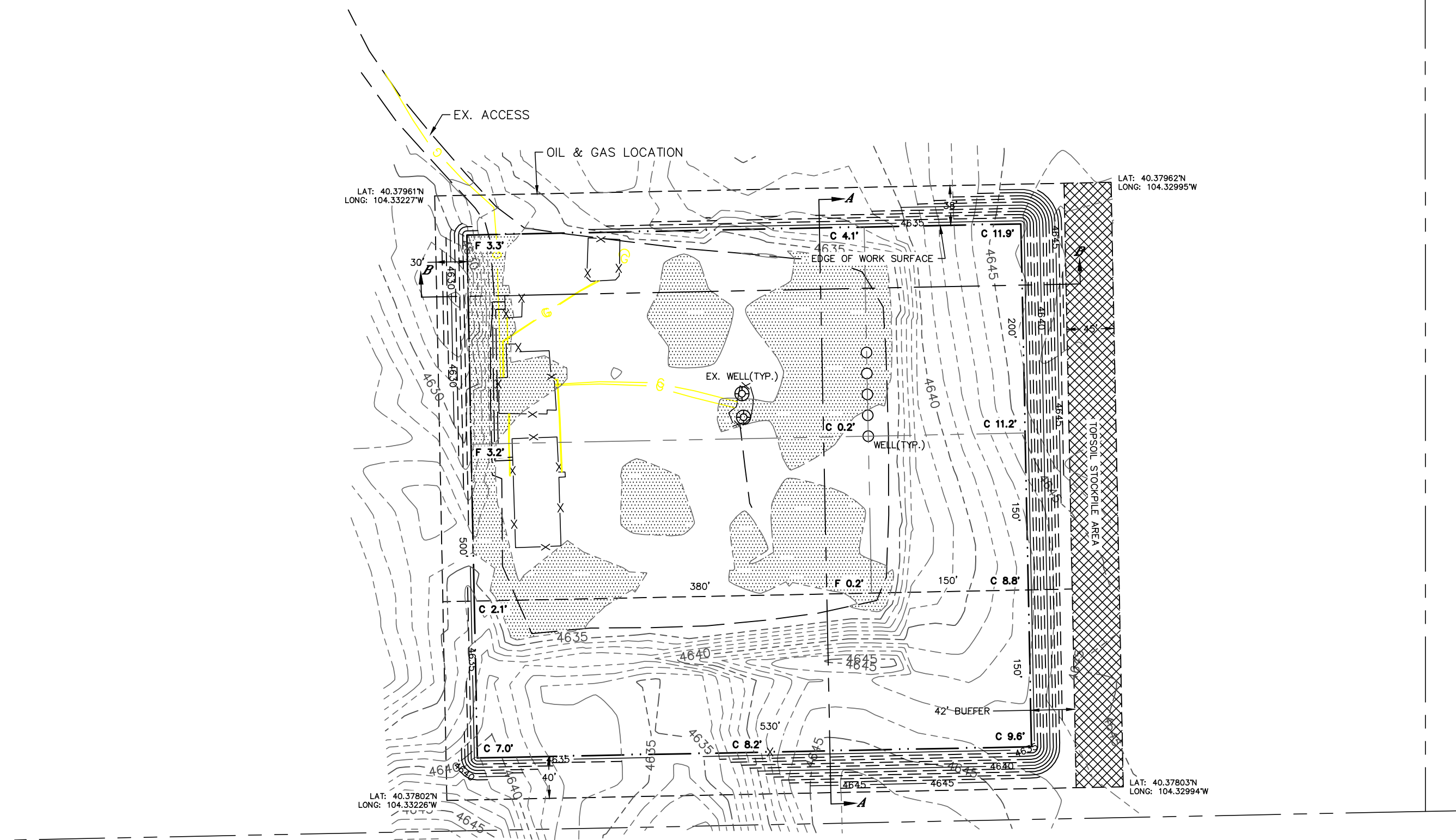


# CUT & FILL DIAGRAM

ANTELOPE J-21 PAD

SECTION: 21  
TOWNSHIP: 5N  
RANGE: 62W  
6TH. P.M.  
WELD COUNTY, CO

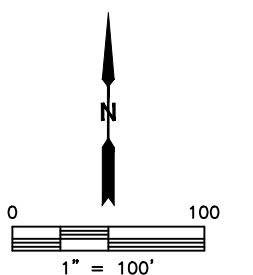


OPERATOR: BONANZA CREEK ENERGY  
LOCATION: 369' FSL, 2057' FWL  
EXISTING ELEV= 4634.0'  
PROPOSED ELEV= 4634.0'  
DISTURBANCE= 7.7 ACRES

ESTIMATED EARTHWORK:  
TOPSOIL= 5,722 CY  
CUT= 36,483 CY  
FILL= 1,406 CY  
EXCESS= 35,077 CY

- NOTE:
- 1) Ground elevations are based on an observed GPS elevation (NAVD 1988 DATUM).
  - 2) A 10% swell factor has been assumed for in-situ cut material.
  - 3) Proposed elevation does not account for top soil removal or plating material.
  - 4) Top soil volume assumes 6" depth across entire location.
  - 5) Entire pad shall be plated with 4-6" of course granular material.
  - 6) Typical Fill slopes 4:1
  - 7) Typical Cut slopes 3:1

LEGEND	
EX. CONTOUR	---
PRO. CONTOUR	---
EROSION CONTROL	---
FILL AREA	---



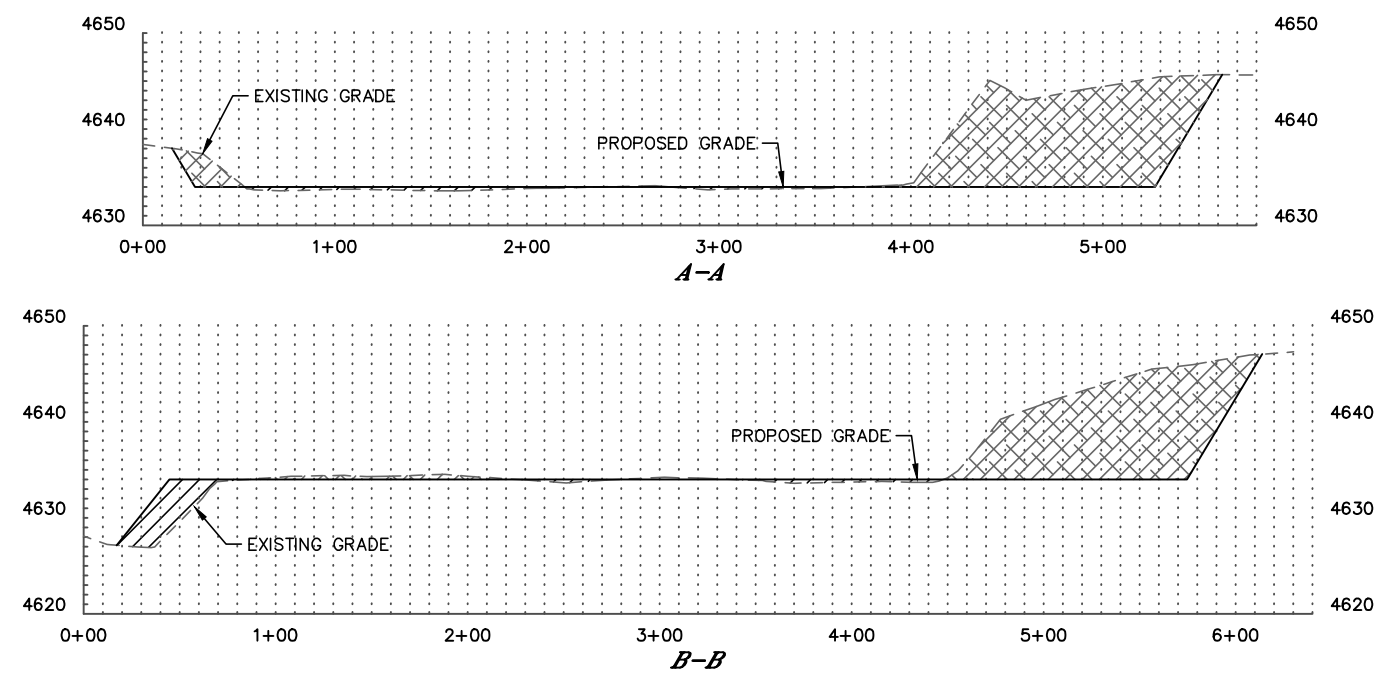


Lat40 , Inc. 6250 W. 10th Street, Unit 2, Greeley, CO 970-515-5294

# CUT & FILL DIAGRAM

ANTELOPE J-21 PAD

SECTION: 21  
TOWNSHIP: 5N  
RANGE: 62W  
6TH. P.M.  
WELD COUNTY, CO



HORIZONTAL SCALE: 1"=100', VERTICAL SCALE: 1"=20'