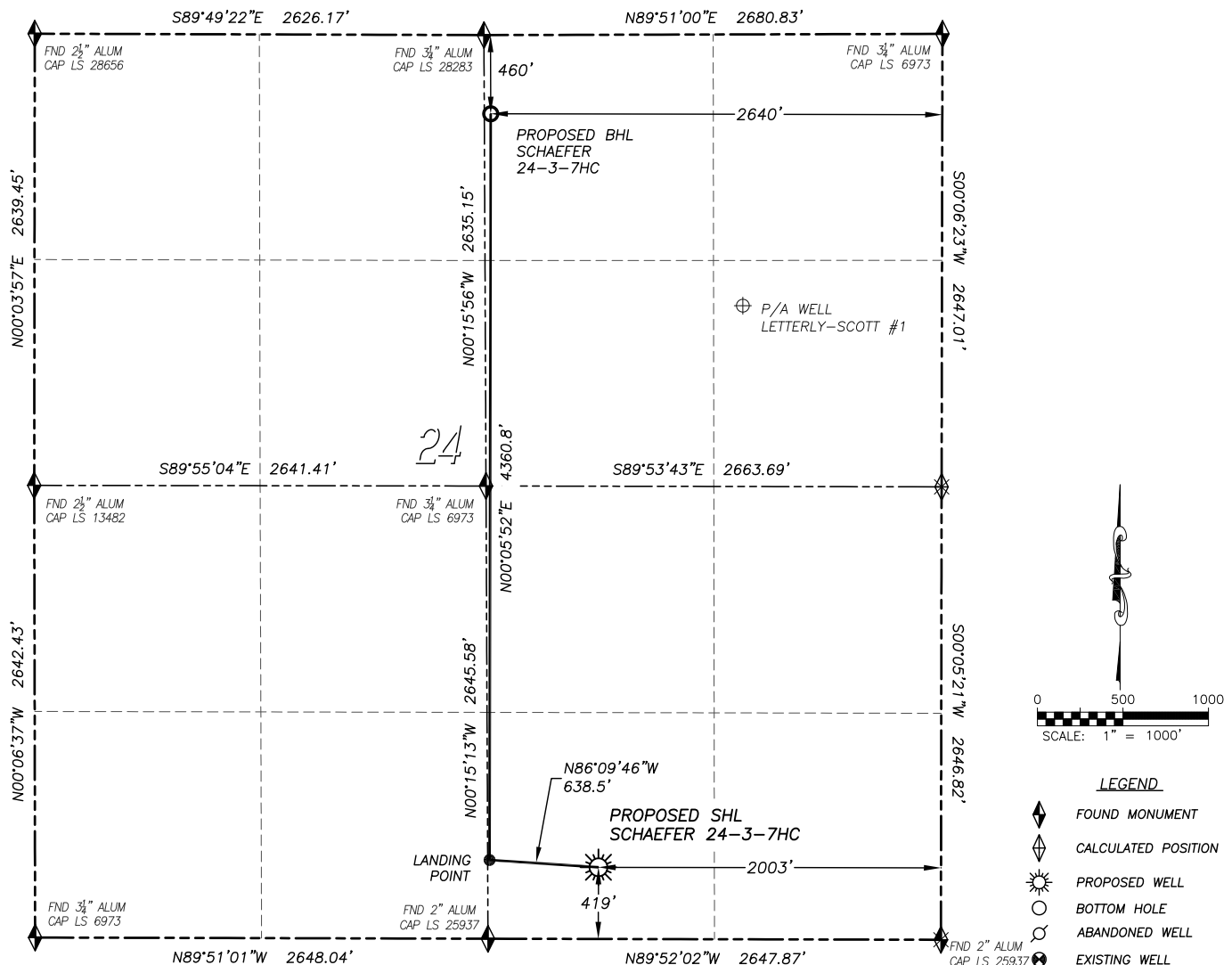


# WELL LOCATION CERTIFICATE

## SCHAEFER 24-3-7HC

SECTION 24, TOWNSHIP 1 SOUTH, RANGE 67 WEST OF THE 6TH P.M.



IN ACCORDANCE WITH A REQUEST FROM WARD PETROLEUM, DALEY LAND SURVEYING, INC. HAS DETERMINED THE SURFACE LOCATION OF THE SCHAEFER 24-3-7HC WELL TO BE 419' FSL, 2003' FEL, AND THE BOTTOM HOLE LOCATION TO BE 460' FNL, 2640' FEL, AS MEASURED AT NINETY (90) DEGREES FROM THE SECTION LINES OF SECTION 24, TOWNSHIP 1 SOUTH, RANGE 67 WEST OF THE 6TH PRINCIPAL MERIDIAN, ADAMS COUNTY, COLORADO.

I HEREBY CERTIFY THAT THIS WELL LOCATION CERTIFICATE WAS PREPARED BY ME OR UNDER MY DIRECT SUPERVISION, THAT THE WORK WAS COMPLETED ON 4/11/2014 FOR AND ON BEHALF OF WARD PETROLEUM, AND THAT THIS MAP DOES NOT REPRESENT A BOUNDARY SURVEY, IT IS NOT A LAND SURVEY PLAT OR AN IMPROVEMENT SURVEY PLAT AND IT IS NOT TO BE RELIED UPON FOR THE ESTABLISHMENT OF FENCE, BUILDING OR OTHER FUTURE IMPROVEMENT LINES.

### NOTES:

- 1) BEARINGS FOR THIS MAP ARE ASSUMED AND BASED UPON GPS OBSERVATIONS MADE BETWEEN MONUMENTS LOCATED AT THE SOUTHEAST CORNER AND SOUTH QUARTER CORNER OF SECTION 24, T.1S., R.67W.
- 2) HORIZONTAL DATUM IS NAD83.
- 3) VERTICAL DATUM IS NAVD88 AND ORIGINATES FROM THE LOCAL C.O.R.S. NETWORK, UTILIZING THE GEOID12A MODEL.
- 4) SEE LOCATION DRAWING FOR VISIBLE IMPROVEMENTS WITHIN 500' OF PROPOSED DISTURBED AREA.
- 5) SURFACE USE: AGRICULTURAL.
- 6) INST. OPERATOR: ROB DALEY

### NEAREST CULTURAL ITEMS:

- |                                |          |
|--------------------------------|----------|
| 1. BUILDING:                   | 521'± SW |
| 2. BUILDING UNIT:              | 567'± SW |
| 3. HIGH OCC. BLD. UNIT:        | 5280'±   |
| 4. DES. OUTSIDE ACTIVITY AREA: | 5280'±   |
| 5. PUBLIC ROAD:                | 400'± S  |
| 6. ABOVE GROUND UTILITY:       | 435'± S  |
| 7. RAILROAD:                   | 992'± NW |
| 8. PROPERTY LINE:              | 419'± S  |

### NAD 83 LATITUDE AND LONGITUDE

#### SURFACE LOCATION:

LATITUDE: N39.94447°  
 LONGITUDE: W104.83498°  
 ELEVATION: 5022'  
 PDOP: 2.0  
 QTR/QTR: SW4/SE4

#### LANDING POINT:

LATITUDE: N39.94459°  
 LONGITUDE: W104.83725°

#### BOTTOM HOLE:

LATITUDE: N39.95656°  
 LONGITUDE: W104.83722°

