

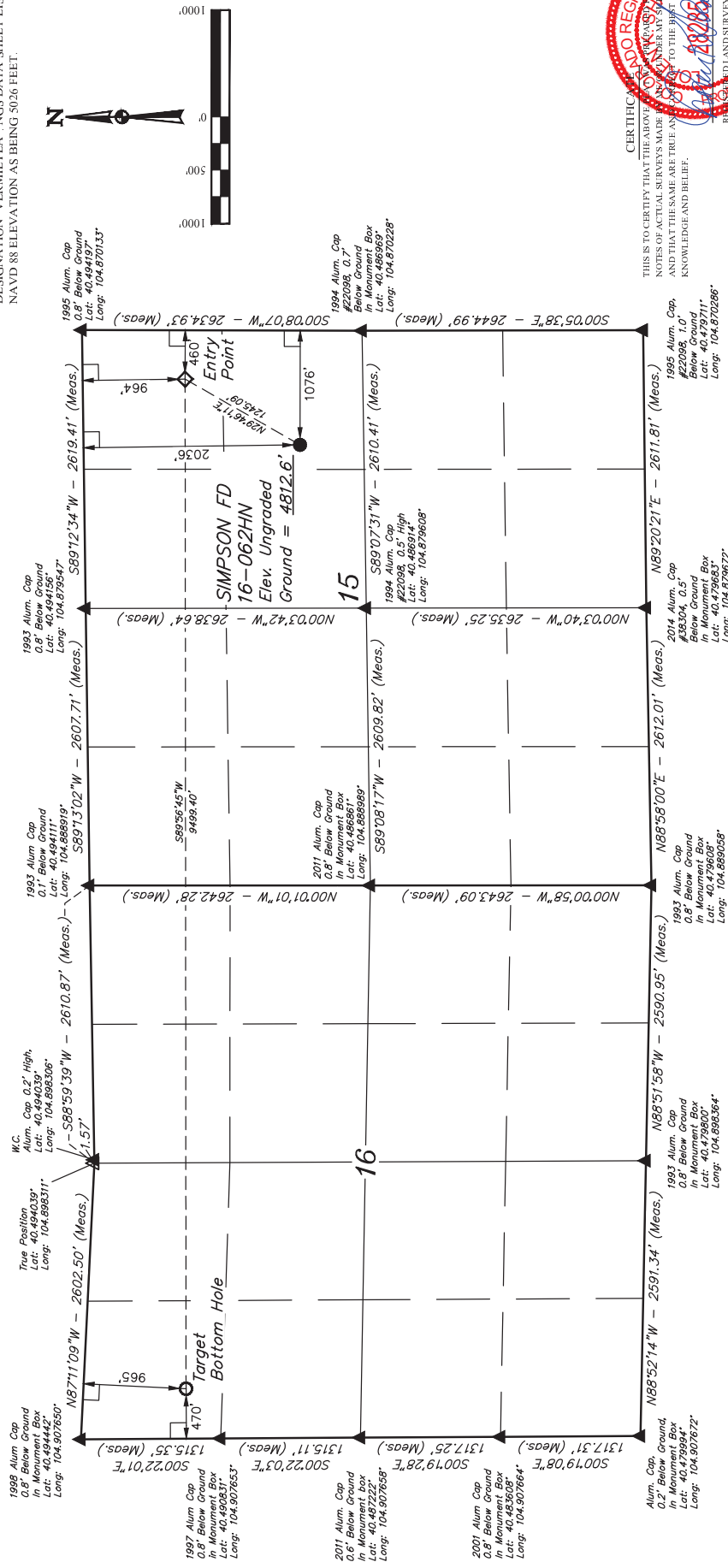
GREAT WESTERN OIL & GAS COMPANY

SIMPSON FD 16-062HN
SE 1/4 NE 1/4, SECTION 15, T6N, R67W, 6th P.M.
WELD COUNTY, COLORADO

BASIS OF BEARINGS

BASIS OF ELEVATION

USGS COOPERATIVE BASE NETWORK CONTROL STATION,
DESIGNATION "VERMILYEA" NGS DATA SHEET LISTS THE
NAVD 88 ELEVATION AS BEING 5026 FEET.



THIS IS TO CERTIFY THAT THE ABOVE
NOTES OF ACTUAL SURVEYS MADE
AND THAT THE SAME ARE TRUE AND
KNOWLEDGE AND BELIEF.



UELS, LLC
Corporate Office * 85 South 200 East
Vernal, UT 84078 * (435) 789-1017

ENGINEERING & LAND SURVEYING		SURVEYED BY: DALLAS NIELSEN, D.W.		DATE: 03-13-15	
DRAWN BY: J.W.		DATE DRAWN: 12-29-14			
SCALE: 1" = 1000'		REVISED: 03-16-15 J.S.			
WELL LOCATION PLAT					
NAD 83 (TARGET BOTTOM HOLE)		NAD 83 (SURFACE LOCATION)			
LATITUDE - 40°29'40.34" (40.491733)		LATITUDE - 40°29'18.93" (40.488592)			
LONGITUDE - 104°52'41.47" (104.8740564)		LONGITUDE - 104°52'26.66" (104.874072)			
NAD 27 (TARGET BOTTOM HOLE)		NAD 27 (SURFACE LOCATION)			
LATITUDE - 40°29'30.24" (40.491733)		LATITUDE - 40°29'19.00" (40.488611)			
LONGITUDE - 104°52'16.66" (104.8740563)		LONGITUDE - 104°52'22.76" (104.873544)			

WELL LOCATION PLAT

LEGEND:

- [] = 90° SYMBOL
 ● = PROPOSED WELLHEAD.
 ○ = TARGET BOTTOM HOLE.
 ◆ = ENTRY POINT
 ▲ = SECTION CORNERS LOCATED.
 ▽ = SECTION CORNERS RE-ESTABLISHED.
 (Not Set on Ground.)