

LEGEND:

 **PROPOSED LOCATION**

EOG RESOURCES, INC.

FOX CREEK 28 SWSE
SW 1/4 SE 1/4, SECTION 28, T12N, R63W, 6th P.M.
WELD COUNTY, COLORADO

DRAWN BY: C.M.F.

DATE DRAWN: 04-14-15

SCALE: 1:100,000

REVISED: 05-12-15

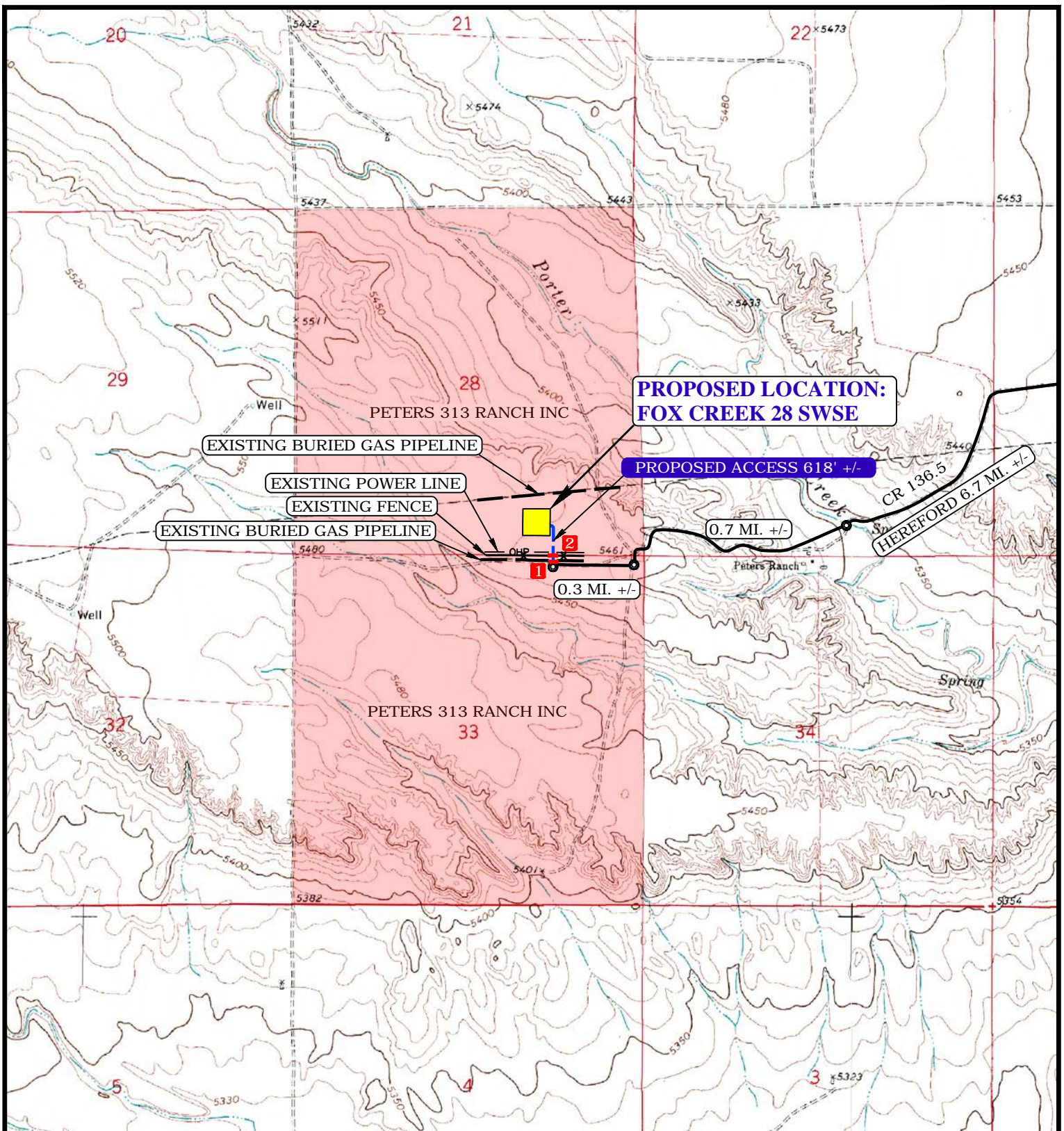
ACCESS ROAD MAP

TOPO A

UELS, LLC

Corporate Office * 85 South 200 East
 Vernal, UT 84078 * (435) 789-1017





NOTE: PARCEL DATA SHOWN HAS BEEN OBTAINED FROM VARIOUS SOURCES AND SHOULD BE USED FOR MAPPING, GRAPHIC AND PLANNING PURPOSES ONLY. NO WARRANTY IS MADE BY UINTAH ENGINEERING AND LAND SURVEYING (UELS) FOR ACCURACY OF THE PARCEL DATA.

LEGEND:

	EXISTING ROAD		18" CULVERT REQUIRED
	PROPOSED ROAD		CATTLE GUARD REQUIRED
	EXISTING POWER LINE		
	EXISTING PIPELINE		
	EXISTING FENCE		

EOG RESOURCES, INC.

FOX CREEK 28 SWSE
SW 1/4 SE 1/4, SECTION 28, T12N, R63W, 6th P.M.
WELD COUNTY, COLORADO



UELS, LLC
Corporate Office * 85 South 200 East
Vernal, UT 84078 * (435) 789-1017



DRAWN BY: C.M.F.	DATE DRAWN: 04-14-15
SCALE: 1" = 2000'	REVISED: 05-12-15
ACCESS ROAD MAP	TOPO B