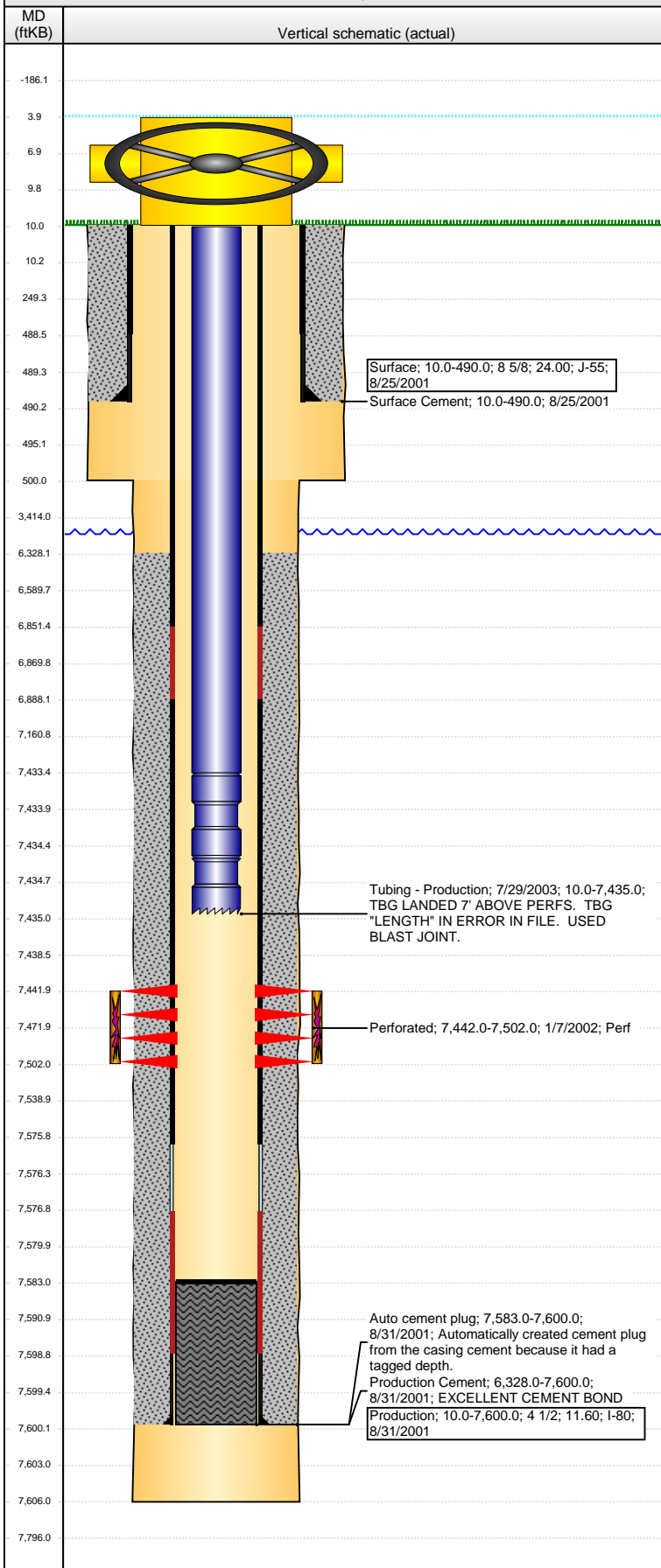


**Well Name: NIKOLORIC C05-05**

VERTICAL - ORIGINAL HOLE, 7/8/2015 11:17:42 AM



Well Header									
API 05-123-20235		Business Unit DJ BASIN		District 15		Well Config VERTICAL			
Original KB Elevation (ft) 4,763.00		KB - GL / MSL (ftKB) 10.00		Spud Date 8/25/2001		P & A Date			
Comment PUMPING UNIT REMOVED 7/03.									
Directions To Well WCR 50 & WCR 51, SOUTH 1/2 MILE, EAST INTO									
Congressional Location									
Quarter 1	Quarter 2	Quarter 3 SW	Quarter 4 NW	Section 5	Township 4 N	Twntshp N...	Range 64	Rng E/W Dir W	
Bottom Hole Location									
North-South Distance (ft)		From N or S Line		East-West Distance (ft)			From E or W Line		
Plug Back Total Depths									
Date	Depth (ftKB)	Method			Com				
8/21/2002	7,497.0	TAG			CO TO 7575				
2/5/2003	7,480.0	TAG							
7/28/2003	7,583.0	TAG							
Wellbore Sections									
Section Des			Size (in)		Act Top, MD (ftKB)		Act Btm, MD (ftKB)		
SURFACE			12 1/4		10.0		500.0		
PRODUCTION			7 7/8		500.0		7,606.0		
Zone Statuses									
Zone Name	Status Date	Status	Fluid Type		Job	Prod Method			
J SAND	1/14/2002	PR	Gas		DRILLING/CO...				
Casing Strings									
Surface, 490.0ftKB									
Casing Description Surface		Run Date 8/25/2001	OD (in) 8 5/8	Wt/Len (l... 24.00	Grade J-55	Top, MD (ft... 10.0	MD (ftKB) 490.0		
Production, 7,600.0ftKB									
Casing Description Production		Run Date 8/31/2001	OD (in) 4 1/2	Wt/Len (l... 11.60	Grade I-80	Top, MD (ft... 10.0	MD (ftKB) 7,600.0		
Cement									
Description Surface Cement					Top Depth (ftKB) 10.0		Bottom Depth (ftKB) 490.0		
Description Production Cement					Top Depth (ftKB) 6,328.0		Bottom Depth (ftKB) 7,600.0		
Tubing Strings									
Tubing Description Tubing - Production		Run Date 7/29/2003	String... 2 3/8	ID (in) 1.995	Wt (lb/ft) 4.70	Grade J-55	Len (ft) 7,424.99	Set De...	
Tubing Components									
Item Des		OD (in)	Wt (lb/ft)	Grade	Jts	Len (ft)	Btm (ftKB)	Btm (TVD) (ftKB)	
Tubing		2 3/8	4.70	J-55	224	7,423.39	7,433.4		
Seating Nipple		2 3/8				1.10	7,434.5		
Notched collar		2 3/8				0.50	7,435.0		
Perforation Data									
Zone		Bnch/St g	Entered Shot Total	Top (ftKB)		Btm (ftKB)		Date	
J SAND, ORIGINAL HOLE			90	7,442.00		7,502.00		1/7/2002	
Stimulations & Treatments									
Date 1/8/2002	Zone J SAND, ORIGINAL HOLE			Primary Job Type DRILLING/COMPLETION - ORIGINAL					
Technical Result			Tech Result Details			Tech Result Note			
Comment									
Other In Hole									
Run Date	Des				OD (in)	Top (ftKB)		Btm (ftKB)	
Logs									
Date	Type					Top, MD (ftKB)		Btm, MD (ftKB)	
8/31/2001	CBL/CCL/GR					6,193.0		7,568.0	
8/31/2001	COMPENSATED DENSITY					4,300.0		7,588.0	
8/31/2001	INDUCTION					490.0		7,608.0	
8/21/2002	PRODUCTION LOG					7,200.0		7,430.0	

**Well Name: NIKOLORIC C05-05**

VERTICAL - ORIGINAL HOLE, 7/8/2015 11:17:44 AM

## Logs

