



Kerr-McGee Oil & Gas Onshore LP

A subsidiary of Anadarko Petroleum Corporation

1099 18th Street
Denver, CO 80202
720-929-6000

June 15, 2015

Matt Lepore
Director, Colorado Oil and Gas Conservation Commission
Department of Natural Resources
The Chancery Building
1120 Lincoln Street, Suite 801
Denver, CO 80203

Re: **30 Day Certification Letter - 318A.e**
COOK 2N-16HZ (Doc No. 400849753)
Township 2 North, Range 65 West
Section 16: SWSE
Unit Acreage: 480 acres
Unit Spacing: 02N-65W-Sec 9 S2SE
02N-65W-Sec 16 E2
02N-65W-Sec 21 N2NE
Weld County, Colorado

Dear Director Lepore:

Kerr McGee Oil and Gas Onshore LP ("KMG") hereby certifies that KMG owns one hundred percent (100%) of the leasehold interest in the mineral rights in the proposed spacing unit. KMG hereby respectfully requests approval of this boundary well.

If you have any questions or issues regarding this permit, please contact our office.

Sincerely,

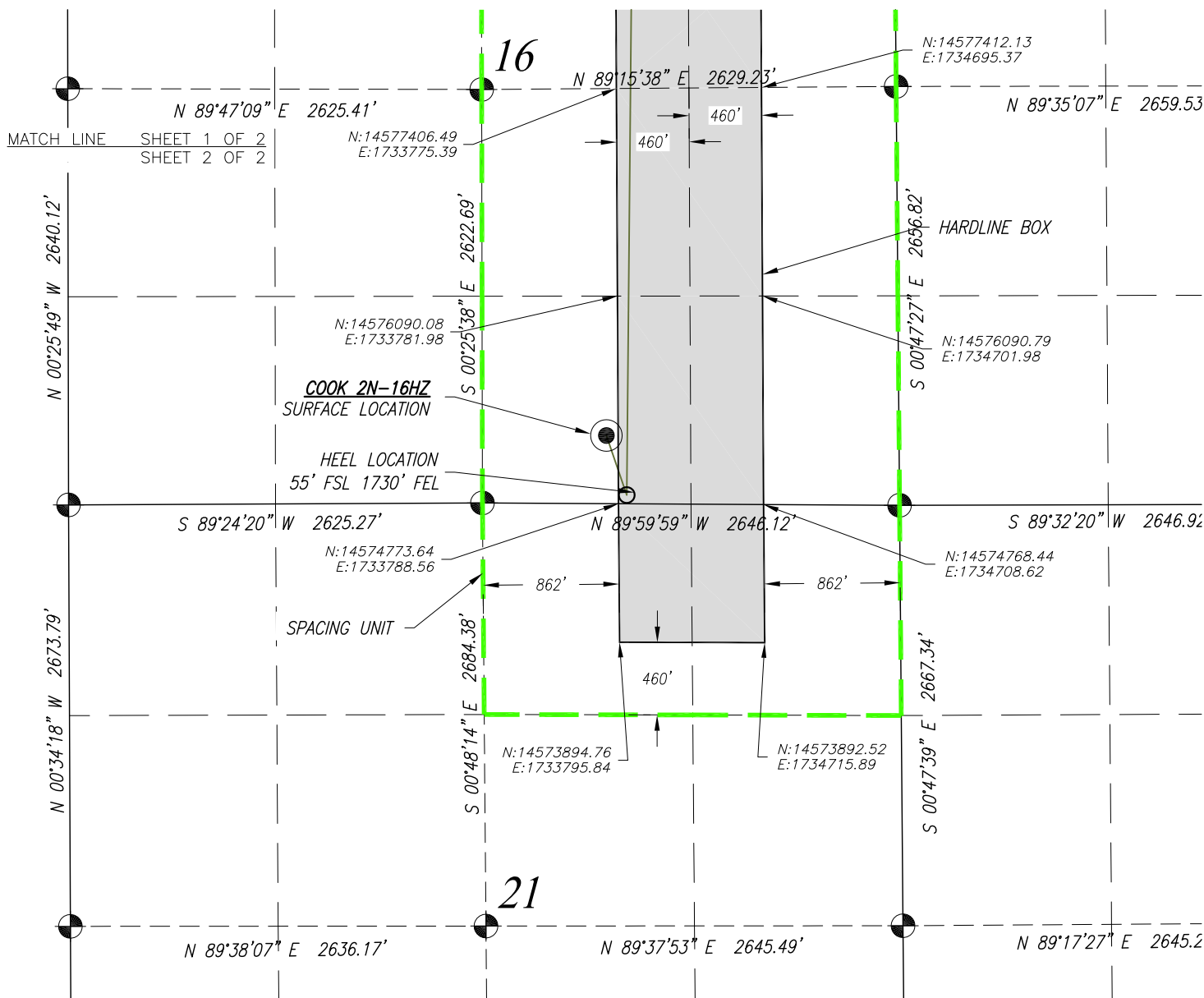
Kerr-McGee Oil and Gas Onshore LP

A handwritten signature in blue ink that reads 'RPowers'.

Ronett Powers
Regulatory Analyst II

Enclosure

TOWNSHIP 2 NORTH, RANGE 65 WEST, 6TH P.M.



HEEL LOCATION

N: 14,574,828.35'
E: 1,733,841.06'

LATITUDE= 40.131594°
LONGITUDE= -104.665760°

LATITUDE= 40°07'53.738"
LONGITUDE= -104°39'56.734"

BOTTOM HOLE LOCATION

N: 14,579,916.87'
E: 1,733,888.43'

LATITUDE= 40.145567°
LONGITUDE= -104.665522°

LATITUDE= 40°08'44.041"
LONGITUDE= -104°39'55.879"

NOTES:

1. Found Section Corner
2. Calculated Section Corner
3. Basis of Bearings: Colorado coordinate system 1983 north zone ('GRID')
4. Basis of Distances: GRID; Combined Factor=0.999728637
5. Basis of coordinates: UTM ZONE 13 NAD 83

PREPARED FOR:

KerrMcGee
Kerr-McGee Oil &
Gas Onshore L.P.
1099 18th Street
Denver, Colorado 80202

Acklam, Inc.

DATE SURVEYED: 12/15/2014

DATE DRAFTED: 04/14/2015

DRAFTED BY: FWM CHK BY: MAH

JOB No. 14506

REVISED: 4/27/2015

SPACING UNIT EXHIBIT

COOK 2N-16HZ

SURFACE 432' FSL 1856' FEL SEC. 16
GROUND ELEVATION=4883.2'

HEEL 55' FSL 1730' FEL SEC. 16
BOTTOM 149' FNL 1641' FEL SEC. 16

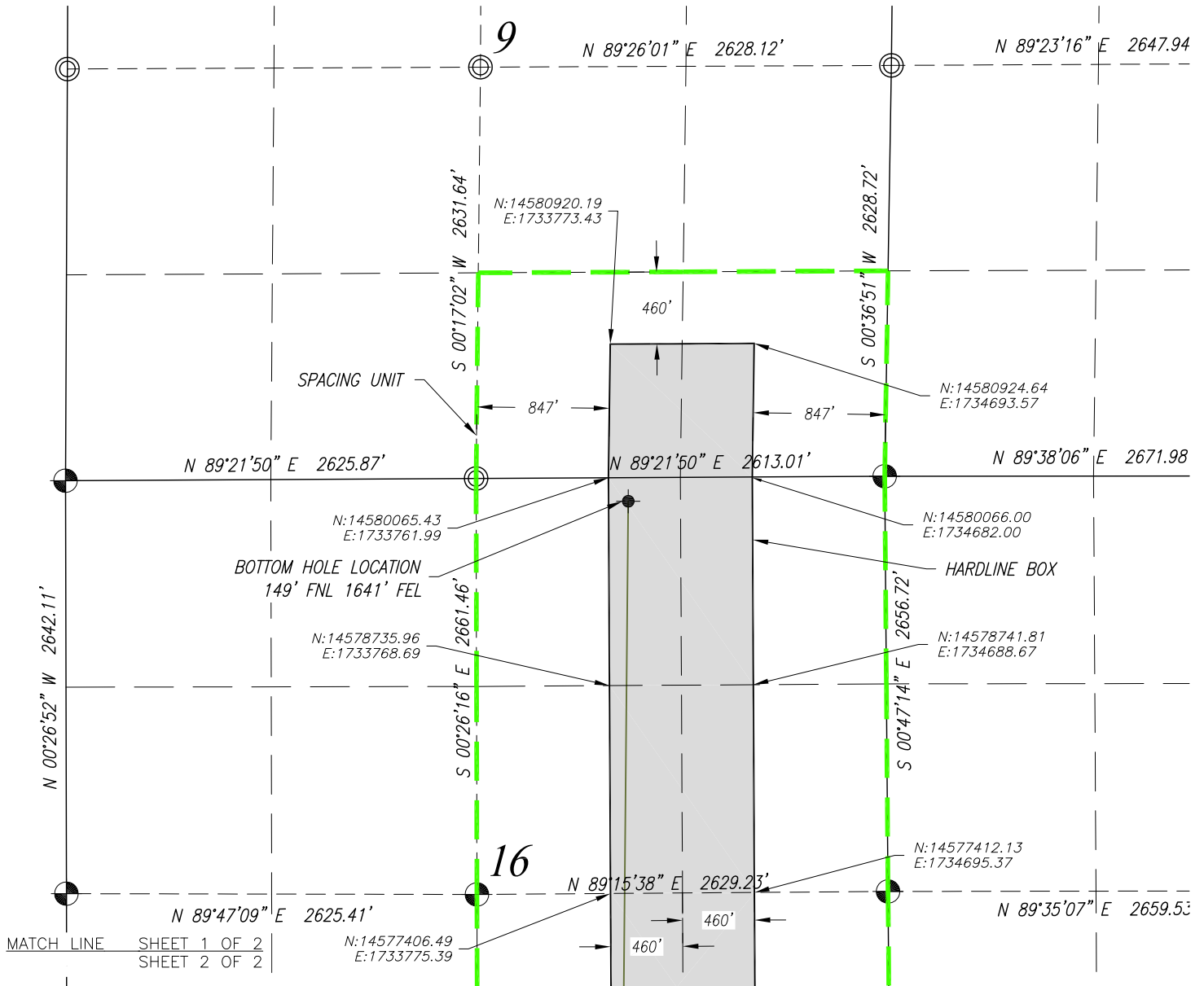
SW 1/4 SE 1/4
SECTION 16, T2N, R65W, 6TH PM
WELD COUNTY, COLORADO

0' 1000'
SCALE: 1"=1000'



NOTICE: According to Colorado law you must commence any legal action based upon any defect in this survey within three years after you first discover such defect. In no event may any action based upon any defect in this survey be commenced more than ten years from the date of the certification shown hereon.

TOWNSHIP 2 NORTH, RANGE 65 WEST, 6TH P.M.



HEEL LOCATION

N: 14,574,828.35'
E: 1,733,841.06'

LATITUDE= 40.131594°
LONGITUDE= -104.665760°

LATITUDE= 40°07'53.738"
LONGITUDE= -104°39'56.734"

BOTTOM HOLE LOCATION

N: 14,579,916.87'
E: 1,733,888.43'

LATITUDE= 40.145567°
LONGITUDE= -104.665522°

LATITUDE= 40°08'44.041"
LONGITUDE= -104°39'55.879"

NOTES:

1. Found Section Corner
2. Calculated Section Corner
3. Basis of Bearings: Colorado coordinate system 1983 north zone ('GRID')
4. Basis of Distances: GRID; Combined Factor=0.999728637
5. Basis of coordinates: UTM ZONE 13 NAD 83

PREPARED FOR:

KerrMcGee
Kerr-McGee Oil &
Gas Onshore L.P.
1099 18th Street
Denver, Colorado 80202

Acklam, Inc.

DATE SURVEYED: 12/15/2014

DATE DRAFTED: 04/14/2015

DRAFTED BY: FWM CHK BY: MAH

JOB No. 14506

REVISED: 4/27/2015

SPACING UNIT EXHIBIT

COOK 2N-16HZ

SURFACE 432' FSL 1856' FEL SEC. 16
GROUND ELEVATION=4883.2'

HEEL 55' FSL 1730' FEL SEC. 16
BOTTOM 149' FNL 1641' FEL SEC. 16

SW 1/4 SE 1/4
SECTION 16, T2N, R65W, 6TH PM
WELD COUNTY, COLORADO

0' 1000'
SCALE: 1"=1000'

UTM GRID

NOTICE: According to Colorado law you must commence any legal action based upon any defect in this survey within three years after you first discover such defect. In no event may any action based upon any defect in this survey be commenced more than ten years from the date of the certification shown hereon.

SHEET 2 OF 2