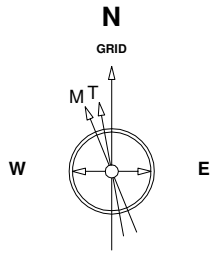


Great Western Operating Company, LLC

Location Colorado
Field Wattenberg
Installation Schneider - South

Slot Slot #02
Well Schneider HD 11-209HN
Wellbore Schneider HD 11-209HN (PWB)

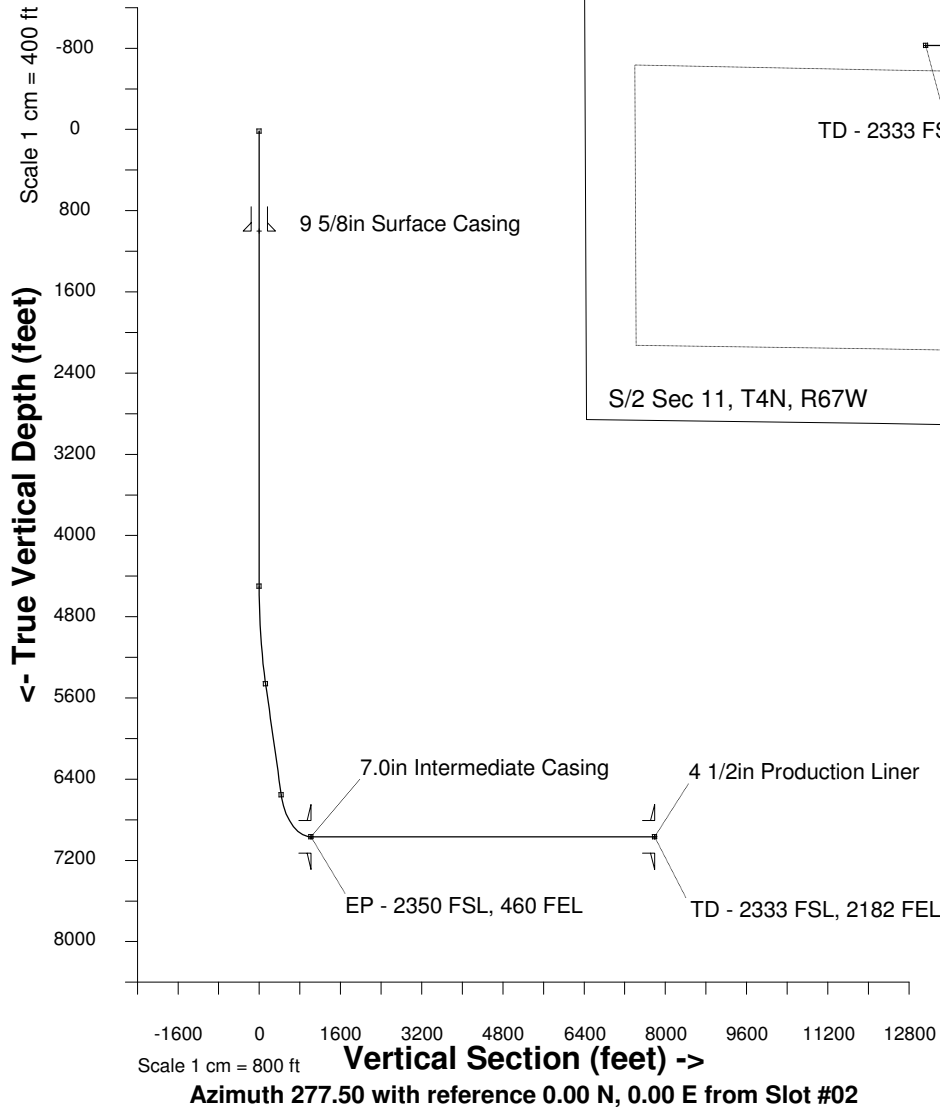
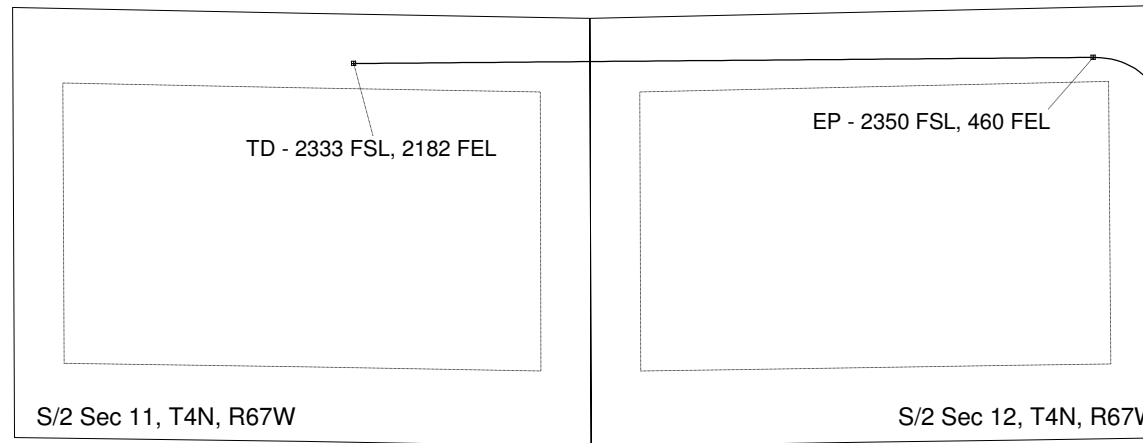


22-Jul-2014
IGRF Model [1900.0-2015.0] Dip: -29.72 deg Field: 32220.6 nT
Magnetic North is 4.47 deg West of True North
GRID North is 0.43 deg East of True North
To correct azimuth from True to GRID subtract 0.43 deg
To correct azimuth from Magnetic to GRID subtract 4.91 deg

Scale 1 cm = 375 ft

East (feet) ->

-11250 -10500 -9750 -9000 -8250 -7500 -6750 -6000 -5250 -4500 -3750 -3000 -2250 -1500 -750 0 750 1500



WELL PROFILE DATA

Point	MD	Inc	Azi	TVD	North	East	deg/100ft	V. Sect
Tie on	16.20	0.00	0.00	16.20	0.00	0.00	0.00	0.00
KOP	4500.00	0.00	0.00	4500.00	0.00	0.00	0.00	0.00
End of Build	5505.86	30.18	338.58	5460.00	240.93	-94.52	3.00	125.16
End of Hold	6773.09	30.18	338.58	6555.51	833.91	-327.15	0.00	433.19
Target EP - 2350 FSL	7568.83	90.00	269.68	6968.00	1054.52	-891.89	10.00	1021.89
T.D. & Target TD - 2333	14398.46	90.00	269.68	6968.00	1016.39	-7721.41	0.00	7788.02

Created by admin
Date plotted 19-Nov-2014
Plot reference is Schneider HD 11-209HN (PWB).
Ref wellpath is Schneider HD 11-209HN (PWP#1).
Coordinates are in feet reference Slot #02.
True Vertical Depths are reference Rig Datum.
Measured Depths are reference Rig Datum.
Rig Datum: RKB
Rig Datum to Mean Sea Level: 4751.30 ft.
Plot North is aligned to GRID North.