

1801 Broadway
Suite 500
Denver, Colorado 80202



Callie Fiddes
Regulatory Technician
Tel: 303.398.0550
E-mail: cfiddes@gwogco.com

December 10, 2014

Colorado Oil and Gas Conservation Commission
1120 Lincoln Street, Suite 801
Denver, Colorado 80203

RE: **Proposed Wellbore Spacing Unit**
Schneider HD 11-209HN

Niobrara New Drill
Township 4 North, Range 67 West, 6th P.M.
Section 7
Weld County, Colorado

Dear Director:

Great Western Operating Company, LLC is planning to drill the above captioned well in accordance with the provisions of COGCC Rule 318A.e.

Great Western proposed wellbore spacing unit consists of:

- **N/2 SE/4, S/2 NE/4 Sec 11, N/2 S/2, S/2/N2 Sec 12**
- **480 acres**

The 30 day notification time period has passed and we have not received any objections to such well locations or proposed spacing unit, therefore Great Western hereby requests the Director to approve the above mentioned well. Great Western Operating Company, LLC respectfully requests that the COGCC review the enclosed map illustrating the proposed wellbore spacing unit.

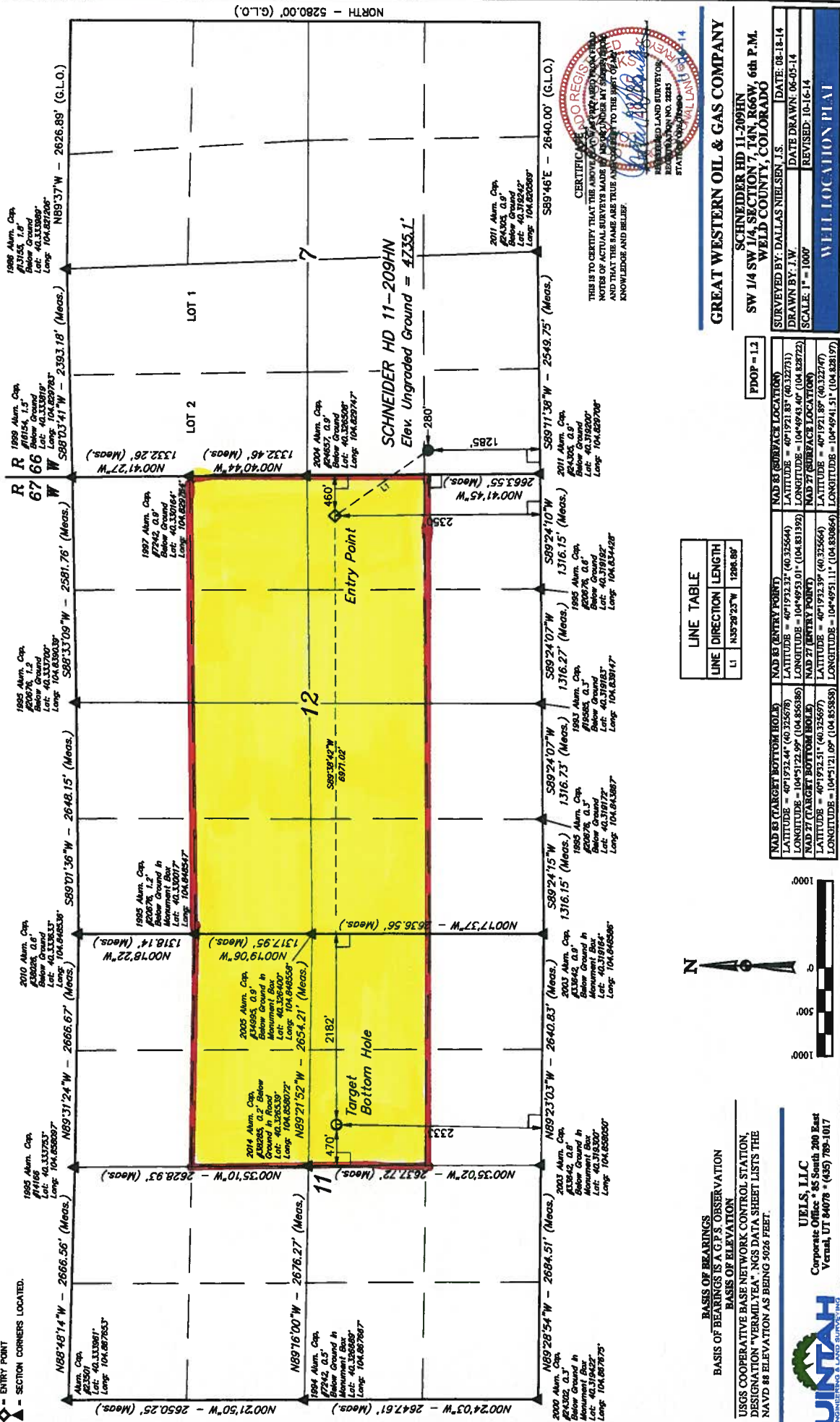
Respectfully,

Callie Fiddes

Callie Fiddes
Regulatory Technician
Great Western Operating Company, LLC

LEGEND:

- 90° SYMBOL
- PROPOSED WELLHEAD.
- TARGET BOTTOM HOLE.
- ENTRY POINT
- SECTION CORNERS LOCATED.



BASIS OF BEARINGS

EARINGS IS A G.P.S. OBSERVATION

BASIS OF ELEVATION

BASE NETWORK CONTROL STATE

IN AS BEING 5026 FEET.

KEYS TO C

Corporate Office • 85 South 2nd

Vernal, UT 84078 • (435) 789-

DNIA3

N 



| LINE TABLE | | |
|------------|-------------|----------|
| LINE | DIRECTION | LENGTH |
| L1 | N35°29'25"W | 1208.80' |

| | | | |
|---------------------------------------|---------------------------------------|---------------------------------------|---------------------------|
| | NAD 83 (TARGET BOTTOM HOLE) | NAD 83 (ENTRY POINT) | NAD 83 (SURFACE LOCATION) |
| LATITUDE = 40°19'32.41" (04.325678) | LATITUDE = 40°19'32.37" (04.325644) | LATITUDE = 40°19'21.83" (04.323731) | |
| LONGITUDE = 104°51'12.99" (04.853686) | LONGITUDE = 104°49'52.01" (04.831392) | LONGITUDE = 104°49'51.40" (04.828722) | |
| | NAD 27 (TARGET BOTTOM HOLE) | NAD 27 (ENTRY POINT) | NAD 27 (SURFACE LOCATION) |
| LATITUDE = 40°19'32.51" (04.325697) | LATITUDE = 40°19'32.39" (04.325664) | LATITUDE = 40°19'21.89" (04.323742) | |
| LONGITUDE = 104°51'12.09" (04.853688) | LONGITUDE = 104°49'51.11" (04.835666) | LONGITUDE = 104°49'51.51" (04.828197) | |

12

GREAT WESTERN OIL & GAS COMPANY

SCHNEIDER HD 11-209HN

SW 1/4 SW 1/4, SECTION 7, T4N, R66W, 6th P.M.

WELD COUNTY, COLORADO

| | |
|-----------------------------------|----------------|
| SURVEYED BY: DALLAS NIELSEN, J.S. | DATE: 08-18-14 |
|-----------------------------------|----------------|

| | |
|----------------|----------------------|
| DRAWN BY: J.W. | DATE DRAWN: 06-05-14 |
|----------------|----------------------|

SCALE: 1" = 1000' REVISED: 10-16-14

WELL LOCATION PLAY

Journal of Management Inquiry 22(4) 397-414 © The Author(s) 2013. Reprints and permissions: [DOI: 10.1177/1056492613505271](http://sagepub.com/journalsPermissions.nav) <http://jmi.sagepub.com>