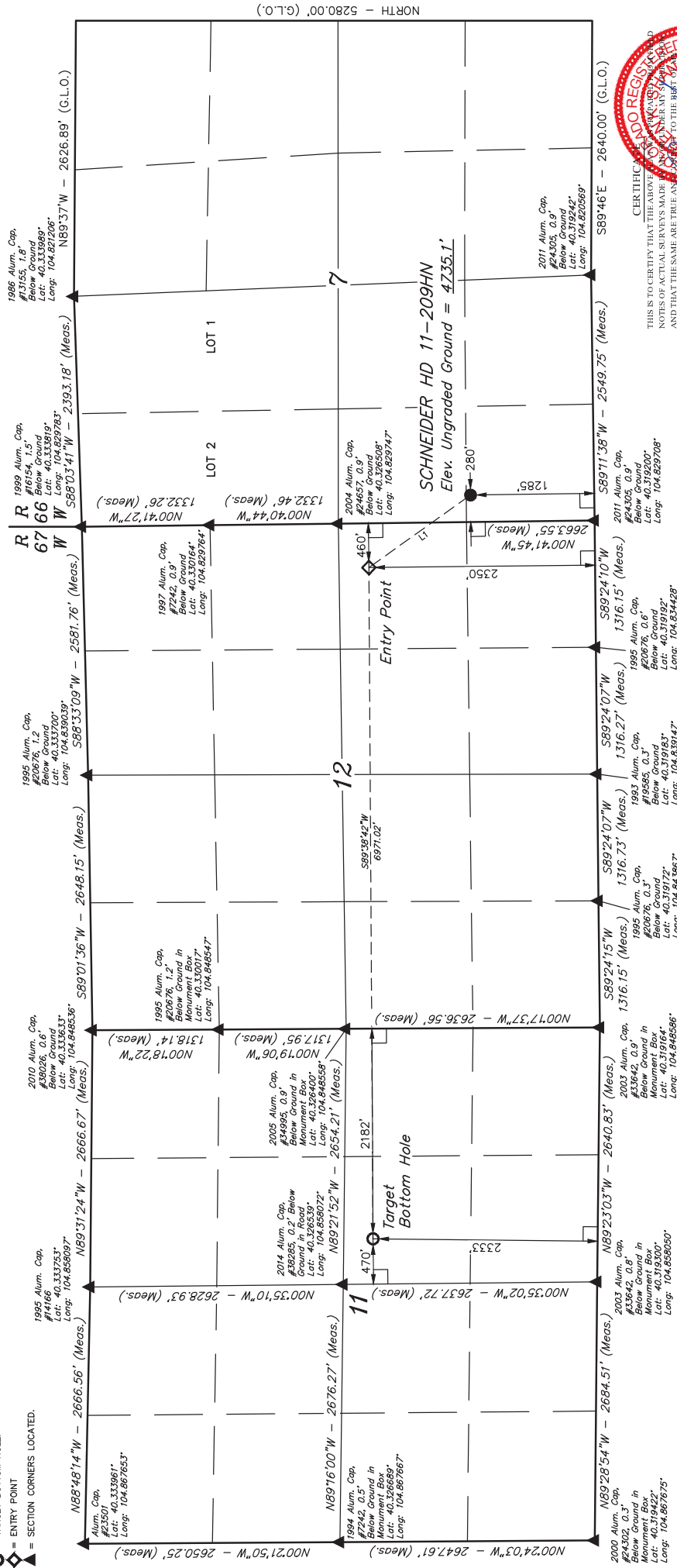


T4N, R66W, 6th P.M.

LEGEND:

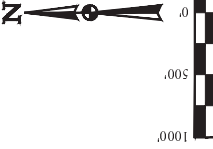
- 90° SYMBOL
- PROPOSED WELLHEAD.
- TARGET BOTTOM HOLE.
- ENTRY POINT
- SECTION CORNERS LOCATED.



CERTIFICATE OF SURVEY  
THIS IS TO CERTIFY THAT THE ABOVE  
NOTES OF ACTUAL SURVEYS MADE  
AND THAT THE SAME ARE TRUE AND  
KNOWLEDGE AND BELIEF.

RECEIVED LAND SURVEYOR  
STATE OF COLORADO  
DATE: 08/18/14  
DRAWN BY: J.W.  
REVISION: 10-16-14  
SCALE: 1" = 1000'

LINE TABLE		
LINE	DIRECTION	LENGTH
L1	N35°29'23"W	1296.89'



BASIS OF BEARINGS  
BASIS OF ELEVATION

USGS COOPERATIVE BASE NETWORK CONTROL STATION.  
DESIGNATION "VERMILYEA", NGS DATA SHEET LISTS THE  
NAVD 88 ELEVATION AS BEING 5026 FEET.

**JUNTAH**  
SURVEYING & LAND SERVICES, INC.  
Corporate Office: 85 South 200 East  
Vernal, UT 84078 • (435) 789-1017

GREAT WESTERN OIL & GAS COMPANY

SCNEIDER HD 11-209HN  
SW 1/4 SW 1/4 SECTION 7, T4N, R66W, 6th P.M.  
WELD COUNTY, COLORADO

PDOP = 1.2

NAD 83 (SURFACE LOCATION)	
LATITUDE	-40°19'21.83" (40.322731)
LONGITUDE	-104°49'43.40" (104.828722)
NAD 27 (SURFACE LOCATION)	
LATITUDE	-40°19'21.89" (40.322747)
LONGITUDE	-104°49'41.51" (104.828197)

WELL LOCATION PLAT