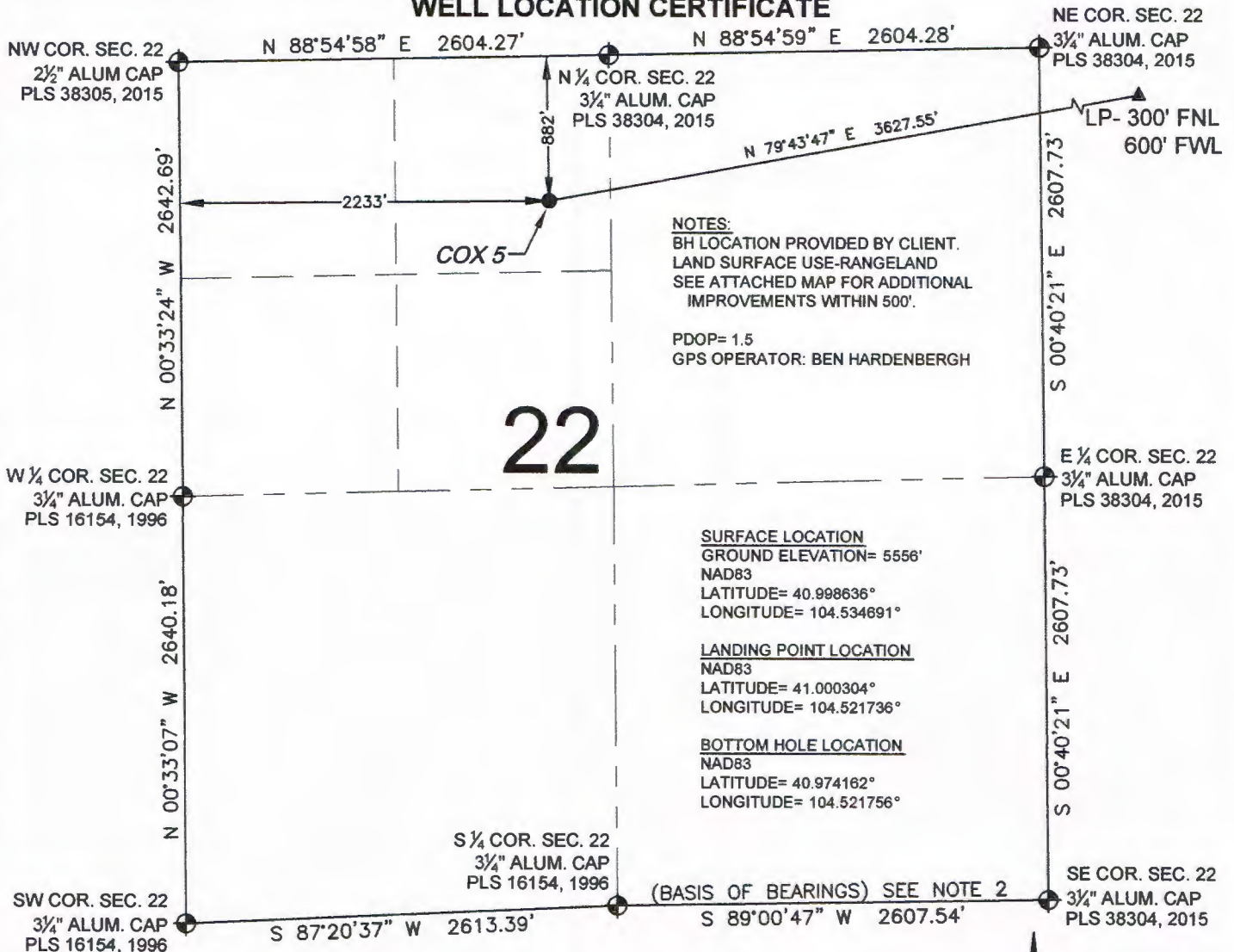


COX 5 WELL LOCATION CERTIFICATE



NOTES:
BH LOCATION PROVIDED BY CLIENT.
LAND SURFACE USE-RANGELAND
SEE ATTACHED MAP FOR ADDITIONAL
IMPROVEMENTS WITHIN 500'.

PDOP= 1.5
GPS OPERATOR: BEN HARDENBERGH

SURFACE LOCATION
GROUND ELEVATION= 5556'
NAD83
LATITUDE= 40.998636°
LONGITUDE= 104.534691°

LANDING POINT LOCATION
NAD83
LATITUDE= 41.000304°
LONGITUDE= 104.521736°

BOTTOM HOLE LOCATION
NAD83
LATITUDE= 40.974162°
LONGITUDE= 104.521756°

LEGEND

- ⊕ = EXISTING MONUMENT
- = PROPOSED WELL
- BH = BOTTOM HOLE
- ◆ = BOTTOM HOLE
- ▲ = LANDING POINT
- LP = LANDING POINT

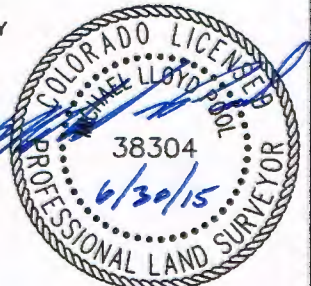
NOTES:

- THIS FIELD SURVEY CONFORMS TO THE MINIMUM STANDARDS SET BY THE C.O.G.C.C., RULE NO. 215
- BEARINGS AND DISTANCE SHOWN HEREON ARE GRID AND BASED ON THE COLORADO STATE PLANE COORDINATE SYSTEM, NAD 83/2011 BETWEEN MONUMENTS AS LABELED HEREON AND ELEVATIONS SHOWN ARE NAVD 88, AS DERIVED BY GPS OBSERVATIONS.
- GRID DISTANCES ARE SHOWN, AS MEASURED IN THE FIELD, WITH TIES TO WELLS MEASURED PERPENDICULAR TO SECTION LINES.

WELL COX 5 TO BE LOCATED 882' FNL AND 2233' FWL

I, MICHAEL L. POOL, A LICENSED PROFESSIONAL LAND SURVEYOR IN THE STATE OF COLORADO DO HEREBY CERTIFY TO **EXTRACTION OIL & GAS**, THAT THE SURVEY AND WELL LOCATION CERTIFICATE SHOWN HEREON WERE DONE BY ME OR UNDER MY DIRECT SUPERVISION AND THAT THE DRAWING SHOWN HEREON ACCURATELY DEPICTS THE PROPOSED LOCATION OF THE WELL. THIS CERTIFICATE DOES NOT REPRESENT A LAND SURVEY PLAT OR IMPROVEMENT SURVEY PLAT AS DEFINED BY C.R.S. 38-51-102 AND CANNOT BE RELIED UPON TO DETERMINE OWNERSHIP.

MICHAEL L. POOL, PLS 38304
COLORADO LICENSED PROFESSIONAL LAND SURVEYOR
FOR AND ON BEHALF OF P.F.S., LLC



SHEET 1 OF 3

PREPARED BY:



FIELD DATE:
05-05-15

DRAWING DATE:
06-30-15

BY:
KAD

CHECKED BY:
MLP

WELL NAME:
COX 5

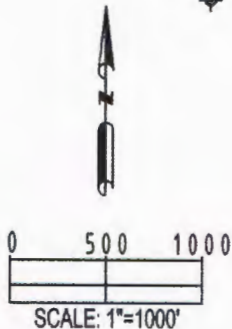
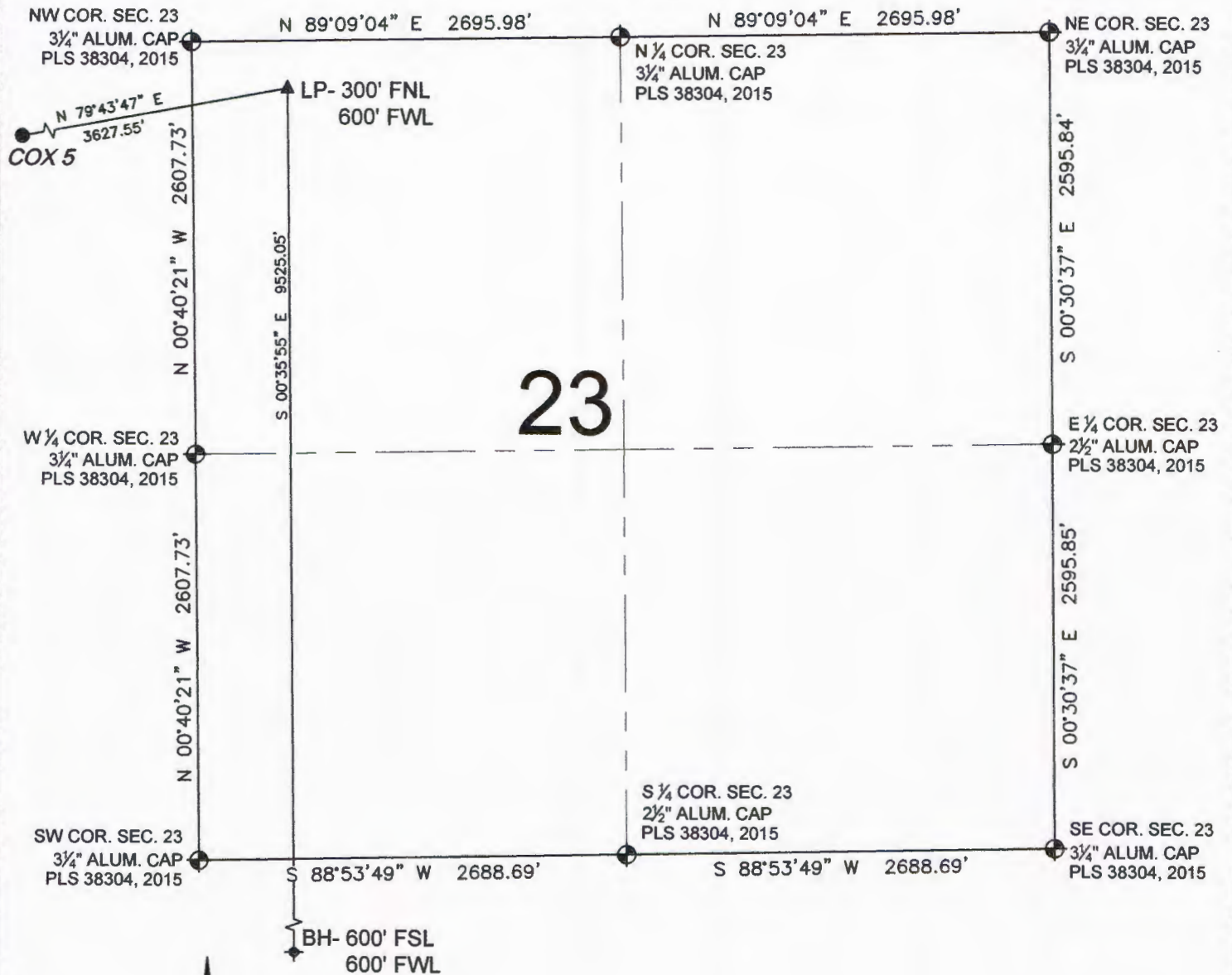
SURFACE LOCATION:

NE 1/4 NW 1/4, SEC. 22, T12N, R64W, 6TH P.M.
WELD COUNTY, COLORADO

PREPARED FOR:



COX 5 WELL LOCATION CERTIFICATE





LEGEND

- = EXISTING MONUMENT
- = PROPOSED WELL
- = BOTTOM HOLE
- ▲ = LANDING POINT
- LP = LANDING POINT

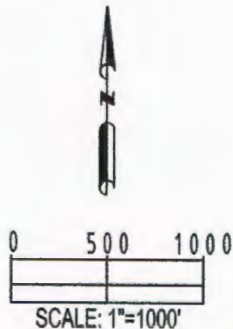
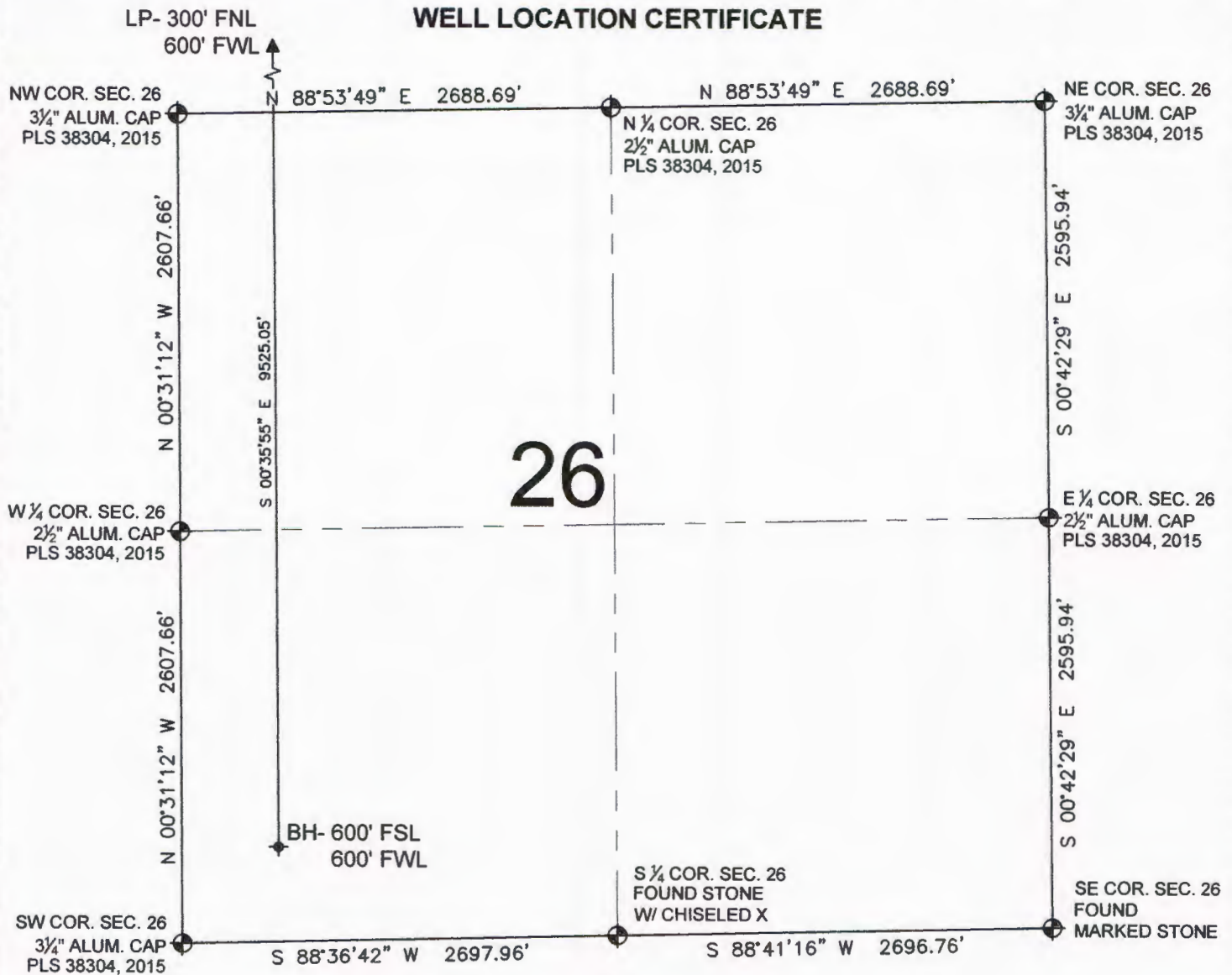
MICHAEL L. POOL, PLS 38304
COLORADO LICENSED PROFESSIONAL LAND SURVEYOR
FOR AND ON BEHALF OF P.F.S., LLC



SHEET 2 OF 3

PREPARED BY:  Petroleum Field Services, LLC 7535 Hilltop Circle Denver, CO 80221	FIELD DATE: 05-05-15	WELL NAME: COX 5	PREPARED FOR:  EXTRACTION Oil & Gas
	DRAWING DATE: 06-30-15	SURFACE LOCATION: NE 1/4 NW 1/4, SEC. 22, T12N, R64W, 6TH P.M. WELD COUNTY, COLORADO	
BY: KAD	CHECKED BY: MLP		

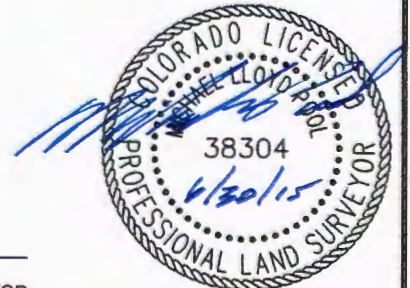
COX 5 WELL LOCATION CERTIFICATE



LEGEND

- = EXISTING MONUMENT
- = PROPOSED WELL
- = BOTTOM HOLE
- ▲ = LANDING POINT
- LP = LANDING POINT

MICHAEL L. POOL, PLS 38304
COLORADO LICENSED PROFESSIONAL LAND SURVEYOR
FOR AND ON BEHALF OF P.F.S., LLC



SHEET 3 OF 3

PREPARED BY:



FIELD DATE:

05-05-15

DRAWING DATE:

06-30-15

BY:

KAD

CHECKED BY:

MLP

WELL NAME:

COX 5

SURFACE LOCATION:

NE 1/4 NW 1/4, SEC. 22, T12N, R64W, 6TH P.M.
WELD COUNTY, COLORADO

PREPARED FOR:

