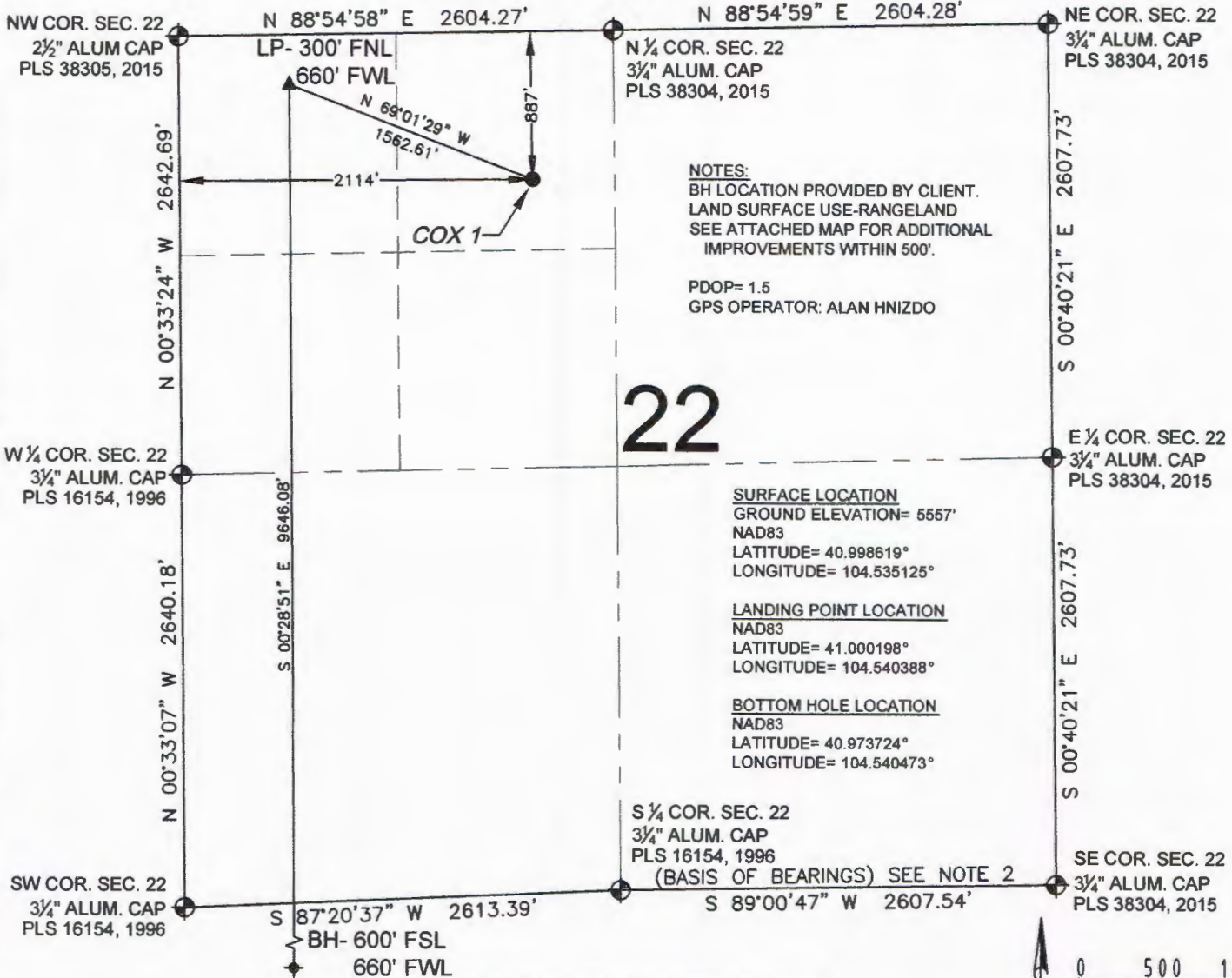


COX 1 WELL LOCATION CERTIFICATE



NOTES:
BH LOCATION PROVIDED BY CLIENT.
LAND SURFACE USE-RANGELAND
SEE ATTACHED MAP FOR ADDITIONAL
IMPROVEMENTS WITHIN 500'.

PDOP= 1.5
GPS OPERATOR: ALAN HNIZDO

SURFACE LOCATION
GROUND ELEVATION= 5557'
NAD83
LATITUDE= 40.998619°
LONGITUDE= 104.535125°

LANDING POINT LOCATION
NAD83
LATITUDE= 41.000198°
LONGITUDE= 104.540388°

BOTTOM HOLE LOCATION
NAD83
LATITUDE= 40.973724°
LONGITUDE= 104.540473°

S 1/4 COR. SEC. 22
3 3/4\" ALUM. CAP
PLS 16154, 1996
(BASIS OF BEARINGS) SEE NOTE 2

LEGEND

- = EXISTING MONUMENT
- = PROPOSED WELL
- BH = BOTTOM HOLE
- ▲ = LANDING POINT
- LP = LANDING POINT

NOTES:

1. THIS FIELD SURVEY CONFORMS TO THE MINIMUM STANDARDS SET BY THE C.O.G.C.C., RULE NO. 215
2. BEARINGS AND DISTANCE SHOWN HEREON ARE GRID AND BASED ON THE COLORADO STATE PLANE COORDINATE SYSTEM, NAD 83/2011 BETWEEN MONUMENTS AS LABELED HEREON AND ELEVATIONS SHOWN ARE NAVD 88, AS DERIVED BY GPS OBSERVATIONS.
3. GRID DISTANCES ARE SHOWN, AS MEASURED IN THE FIELD, WITH TIES TO WELLS MEASURED PERPENDICULAR TO SECTION LINES.

I, MICHAEL L. POOL, A LICENSED PROFESSIONAL LAND SURVEYOR IN THE STATE OF COLORADO DO HEREBY CERTIFY TO EXTRACTION OIL & GAS, THAT THE SURVEY AND WELL LOCATION CERTIFICATE SHOWN HEREON WERE DONE BY ME OR UNDER MY DIRECT SUPERVISION AND THAT THE DRAWING SHOWN HEREON ACCURATELY DEPICTS THE PROPOSED LOCATION OF THE WELL. THIS CERTIFICATE DOES NOT REPRESENT A LAND SURVEY PLAT OR IMPROVEMENT SURVEY PLAT AS DEFINED BY C.R.S. 38-51-102 AND CANNOT BE RELIED UPON TO DETERMINE OWNERSHIP.

MICHAEL L. POOL, PLS 38304
COLORADO LICENSED PROFESSIONAL LAND SURVEYOR
FOR AND ON BEHALF OF P.F.S., LLC



NOTICE: ACCORDING TO COLORADO LAW YOU MUST COMMENCE ANY LEGAL ACTION BASED UPON ANY DEFECT IN THIS SURVEY WITHIN THREE YEARS AFTER YOU FIRST DISCOVER SUCH DEFECT. IN NO EVENT MAY ANY ACTION BASED UPON ANY DEFECT IN THIS SURVEY BE COMMENCED MORE THAN TEN YEARS FROM THIS SAID DATE OF THIS CERTIFICATION SHOWN HEREON.

PREPARED BY:



FIELD DATE:

04-02-15

DRAWING DATE:

06-30-15

BY:

TJN

CHECKED BY:

KAD

WELL NAME:

COX 1

SURFACE LOCATION:

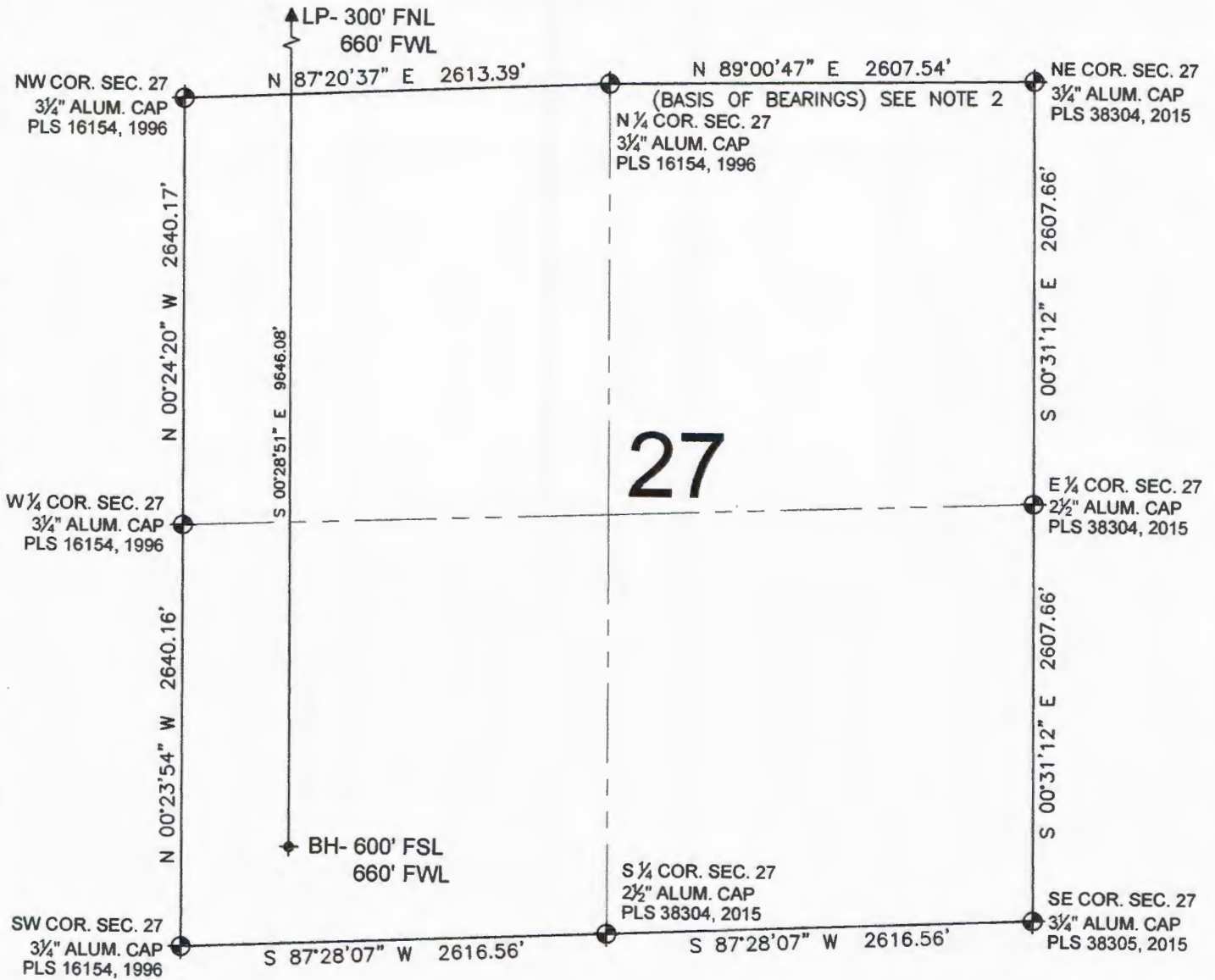
NE 1/4 NW 1/4, SEC. 22, T12N, R64W, 6TH P.M.
WELD COUNTY, COLORADO

PREPARED FOR:



SHEET 1 OF 2

COX 1 WELL LOCATION CERTIFICATE



0 500 1000

SCALE: 1"=1000'

LEGEND

- ⊕ = EXISTING MONUMENT
- = PROPOSED WELL
- BH = BOTTOM HOLE
- ▲ = LANDING POINT
- LP = LANDING POINT

MICHAEL L. POOL, PLS 38304
COLORADO LICENSED PROFESSIONAL LAND SURVEYOR
FOR AND ON BEHALF OF P.F.S., LLC



SHEET 2 OF 2

PREPARED BY:



FIELD DATE:
04-02-15

WELL NAME:
COX 1

DRAWING DATE:
06-30-15

SURFACE LOCATION:

NE 1/4 NW 1/4, SEC. 22, T12N, R64W, 6TH P.M.
WELD COUNTY, COLORADO

BY:
TJN

CHECKED BY:
KAD

PREPARED FOR:

