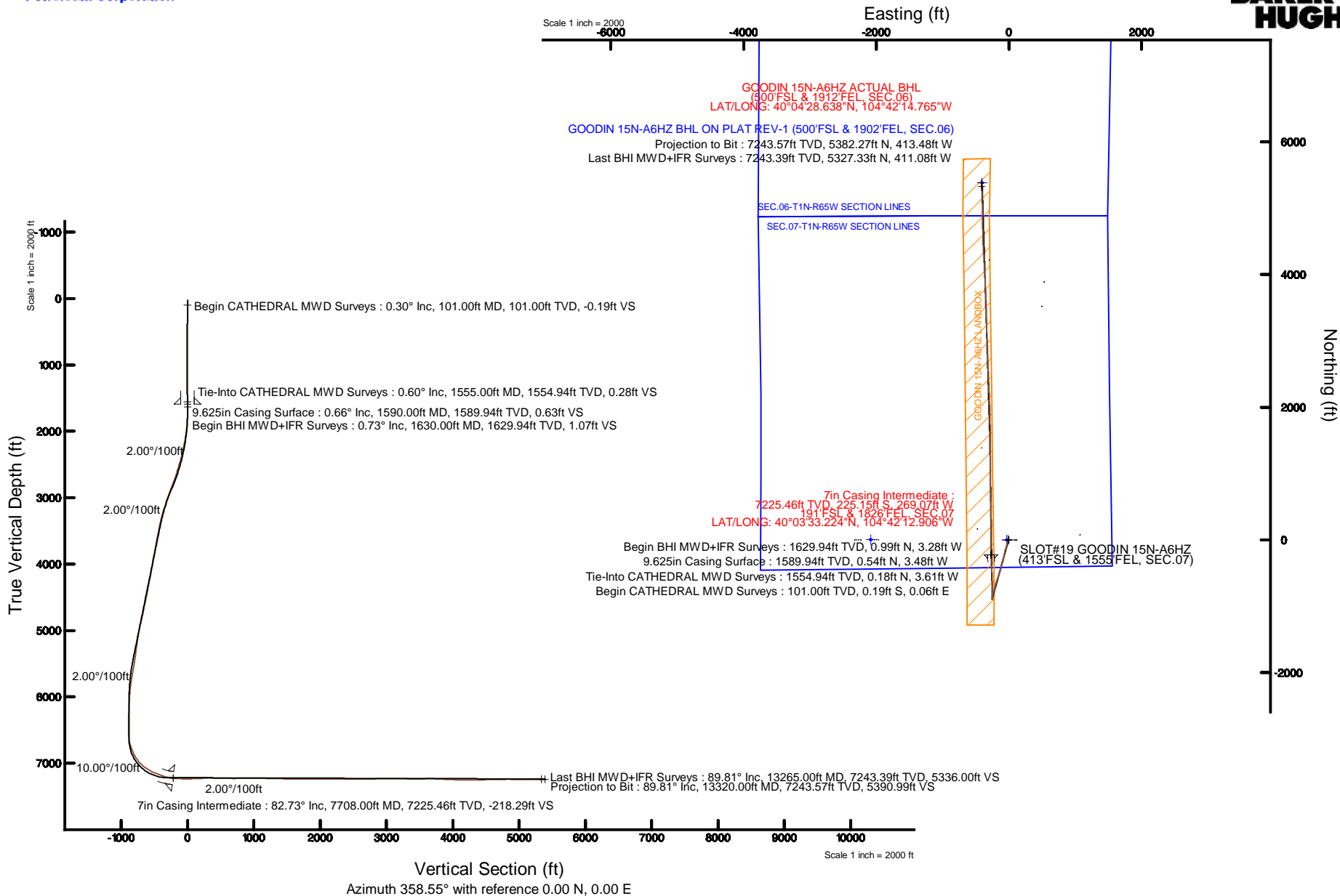


KERR-MCGEE OIL & GAS ONSHORE LP (LAMBERT STATE PLANE COORD)

Location: COLORADO Slot: SLOT#19 GOODIN 15N-A6HZ (413°FSL & 1555°FEL, SEC.07)
 Field: WELD COUNTY (KERR MCGEE) Well: GOODIN 15N-A6HZ
 Facility: SEC.07-T1N-R65W Wellbore: GOODIN 15N-A6HZ PWB

Plot reference wellpath is GOODIN 15N-A6HZ (REV-C.0) PWP

True vertical depths are referenced to H&P 307 (25KB) (RKB)	Grid System: NAD83 / Lambert Colorado SP, Northern Zone (501), US feet
Measured depths are referenced to H&P 307 (25KB) (RKB)	North Reference: True north
H&P 307 (25KB) (RKB) to Mean Sea Level: 5004 feet	Scale: True distance
Mean Sea Level to Mud line (At Slot: SLOT#19 GOODIN 15N-A6HZ (413°FSL & 1555°FEL, SEC.07)): 0 feet	Depths are in feet
Coordinates are in feet referenced to Slot	Created by: precain on 4/20/2015



REFERENCE WELLPATH IDENTIFICATION

Operator	KERR-MCGEE OIL & GAS ONSHORE LP (LAMBERT STATE PLANE COORD)	Slot	SLOT#19 GOODIN 15N-A6HZ (413'FSL & 1555'FEL, SEC.07)
Area	COLORADO	Well	GOODIN 15N-A6HZ
Field	WELD COUNTY (KERR MCGEE)	Wellbore	GOODIN 15N-A6HZ AWB <101-13320>
Facility	SEC.07-T1N-R65W		

REPORT SETUP INFORMATION

Projection System	NAD83 / Lambert Colorado SP, Northern Zone (501), US feet	Software System	WellArchitect® 4.1.1
North Reference	True	User	Precain
Scale	0.999962	Report Generated	4/20/2015 at 9:55:22 AM
Convergence at slot	0.52° East	Database/Source file	WellArchitectDC/GOODIN_15N-A6HZ_AWB__101-13320_.xml

WELLPATH LOCATION

	Local coordinates		Grid coordinates		Geographic coordinates	
	North[ft]	East[ft]	Easting[US ft]	Northing[US ft]	Latitude	Longitude
Slot Location	-79.01	-1073.72	3223188.74	1265651.05	40°03'35.449"N	104°42'09.446"W
Facility Reference Pt			3224261.66	1265739.76	40°03'36.230"N	104°41'55.637"W
Field Reference Pt			3197771.84	1268891.29	40°04'09.600"N	104°47'36.000"W

WELLPATH DATUM

Calculation method	Minimum curvature	H&P 307 (25'KB) (RKB) to Facility Vertical Datum	5004.00ft
Horizontal Reference Pt	Slot	H&P 307 (25'KB) (RKB) to Mean Sea Level	5004.00ft
Vertical Reference Pt	H&P 307 (25'KB) (RKB)	H&P 307 (25'KB) (RKB) to Mud Line at Slot (SLOT#19 GOODIN 15N-A6HZ (413'FSL & 1555'FEL, SEC.07))	5004.00ft
MD Reference Pt	H&P 307 (25'KB) (RKB)	Section Origin	N 0.00, E 0.00 ft
Field Vertical Reference	Mean Sea Level	Section Azimuth	355.61°

REFERENCE WELLPATH IDENTIFICATION			
Operator	KERR-MCGEE OIL & GAS ONSHORE LP (LAMBERT STATE PLANE COORD)	Slot	SLOT#19 GOODIN 15N-A6HZ (413'FSL & 1555'FEL, SEC.07)
Area	COLORADO	Well	GOODIN 15N-A6HZ
Field	WELD COUNTY (KERR MCGEE)	Wellbore	GOODIN 15N-A6HZ AWB <101-13320>
Facility	SEC.07-T1N-R65W		

WELLPATH DATA (151 stations) † = interpolated/extrapolated station										
MD [ft]	Inclination [°]	Azimuth [°]	TVD [ft]	Vert Sect [ft]	North [ft]	East [ft]	Latitude	Longitude	DLS [°/100ft]	Comments
0.00†	0.000	161.500	0.00	0.00	0.00	0.00	40°03'35.449"N	104°42'09.446"W	0.00	
25.00	0.000	161.500	25.00	0.00	0.00	0.00	40°03'35.449"N	104°42'09.446"W	0.00	Tie-On
101.00	0.300	161.500	101.00	-0.19	-0.19	0.06	40°03'35.447"N	104°42'09.445"W	0.39	Begin CATHEDRAL MWD Surveys
179.00	0.100	178.700	179.00	-0.46	-0.45	0.13	40°03'35.445"N	104°42'09.444"W	0.26	
257.00	0.100	214.900	257.00	-0.58	-0.57	0.09	40°03'35.443"N	104°42'09.445"W	0.08	
338.00	0.200	123.600	338.00	-0.72	-0.71	0.17	40°03'35.442"N	104°42'09.444"W	0.28	
418.00	0.100	173.200	418.00	-0.88	-0.86	0.29	40°03'35.441"N	104°42'09.442"W	0.19	
498.00	0.200	121.400	498.00	-1.03	-1.00	0.42	40°03'35.439"N	104°42'09.441"W	0.20	
578.00	0.200	135.400	578.00	-1.22	-1.17	0.64	40°03'35.437"N	104°42'09.438"W	0.06	
658.00	0.100	63.600	658.00	-1.30	-1.24	0.80	40°03'35.437"N	104°42'09.436"W	0.24	
738.00	0.200	77.600	738.00	-1.25	-1.18	1.00	40°03'35.437"N	104°42'09.433"W	0.13	
818.00	0.300	75.400	818.00	-1.20	-1.10	1.34	40°03'35.438"N	104°42'09.429"W	0.13	
898.00	0.300	93.900	898.00	-1.19	-1.06	1.75	40°03'35.439"N	104°42'09.424"W	0.12	
978.00	0.200	156.800	977.99	-1.35	-1.20	2.01	40°03'35.437"N	104°42'09.420"W	0.34	
1058.00	0.400	159.900	1057.99	-1.75	-1.59	2.16	40°03'35.433"N	104°42'09.418"W	0.25	
1138.00	0.900	264.600	1137.99	-2.03	-1.91	1.63	40°03'35.430"N	104°42'09.425"W	1.34	
1218.00	1.100	281.800	1217.98	-1.83	-1.81	0.26	40°03'35.431"N	104°42'09.443"W	0.45	
1298.00	1.100	273.000	1297.96	-1.52	-1.62	-1.26	40°03'35.433"N	104°42'09.462"W	0.21	
1378.00	0.700	293.100	1377.95	-1.19	-1.38	-2.48	40°03'35.435"N	104°42'09.478"W	0.63	
1458.00	0.800	316.500	1457.95	-0.53	-0.79	-3.31	40°03'35.441"N	104°42'09.489"W	0.40	
1555.00	0.600	18.800	1554.94	0.46	0.18	-3.61	40°03'35.451"N	104°42'09.492"W	0.77	Tie-Into CATHEDRAL MWD Surveys
1630.00	0.730	25.900	1629.94	1.23	0.99	-3.28	40°03'35.459"N	104°42'09.488"W	0.20	Begin BHI MWD+IFR Surveys
1724.00	0.560	189.110	1723.93	1.30	1.07	-3.09	40°03'35.460"N	104°42'09.486"W	1.36	
1819.00	3.070	196.710	1818.88	-1.52	-1.82	-3.90	40°03'35.431"N	104°42'09.496"W	2.65	
1914.00	4.970	201.690	1913.64	-7.59	-8.09	-6.15	40°03'35.369"N	104°42'09.525"W	2.03	
2008.00	8.250	205.460	2007.00	-17.10	-17.96	-10.55	40°03'35.272"N	104°42'09.582"W	3.52	
2103.00	10.640	200.890	2100.71	-30.94	-32.31	-16.61	40°03'35.130"N	104°42'09.660"W	2.63	
2198.00	11.980	198.980	2193.86	-47.93	-49.83	-22.95	40°03'34.957"N	104°42'09.741"W	1.46	
2293.00	13.370	195.940	2286.55	-67.28	-69.72	-29.17	40°03'34.760"N	104°42'09.821"W	1.62	
2387.00	15.110	196.190	2377.66	-88.94	-91.93	-35.57	40°03'34.540"N	104°42'09.903"W	1.85	
2482.00	16.330	194.090	2469.10	-113.20	-116.78	-42.27	40°03'34.295"N	104°42'09.990"W	1.42	
2576.00	17.580	199.070	2559.02	-138.76	-143.02	-50.13	40°03'34.036"N	104°42'10.091"W	2.04	
2670.00	19.140	191.940	2648.24	-166.57	-171.51	-57.96	40°03'33.754"N	104°42'10.191"W	2.91	
2765.00	20.450	191.180	2737.63	-197.50	-203.03	-64.40	40°03'33.443"N	104°42'10.274"W	1.41	
2859.00	21.350	193.280	2825.44	-229.63	-235.80	-71.51	40°03'33.119"N	104°42'10.366"W	1.25	
2953.00	22.030	195.510	2912.79	-262.51	-269.44	-80.16	40°03'32.786"N	104°42'10.477"W	1.14	
3048.00	19.170	194.970	3001.70	-293.98	-301.68	-88.95	40°03'32.468"N	104°42'10.590"W	3.02	
3142.00	19.900	197.020	3090.29	-323.44	-331.89	-97.62	40°03'32.169"N	104°42'10.702"W	1.07	
3236.00	18.060	194.890	3179.18	-352.09	-361.27	-106.05	40°03'31.879"N	104°42'10.810"W	2.09	
3331.00	15.460	193.250	3270.14	-378.06	-387.83	-112.74	40°03'31.616"N	104°42'10.896"W	2.78	
3425.00	12.820	190.230	3361.28	-400.09	-410.30	-117.46	40°03'31.394"N	104°42'10.957"W	2.92	
3518.00	11.270	194.060	3452.23	-418.70	-429.27	-121.50	40°03'31.207"N	104°42'11.009"W	1.87	
3613.00	11.300	194.590	3545.40	-436.30	-447.28	-126.10	40°03'31.029"N	104°42'11.068"W	0.11	
3707.00	10.930	198.450	3637.64	-453.23	-464.64	-131.24	40°03'30.857"N	104°42'11.134"W	0.88	
3801.00	11.370	204.500	3729.86	-469.55	-481.53	-137.91	40°03'30.690"N	104°42'11.220"W	1.33	

REFERENCE WELLPATH IDENTIFICATION			
Operator	KERR-MCGEE OIL & GAS ONSHORE LP (LAMBERT STATE PLANE COORD)	Slot	SLOT#19 GOODIN 15N-A6HZ (413'FSL & 1555'FEL, SEC.07)
Area	COLORADO	Well	GOODIN 15N-A6HZ
Field	WELD COUNTY (KERR MCGEE)	Wellbore	GOODIN 15N-A6HZ AWB <101-13320>
Facility	SEC.07-T1N-R65W		

WELLPATH DATA (151 stations)

MD [ft]	Inclination [°]	Azimuth [°]	TVD [ft]	Vert Sect [ft]	North [ft]	East [ft]	Latitude	Longitude	DLS [°/100ft]	Comments
3895.00	12.680	191.380	3821.82	-487.60	-500.08	-143.79	40°03'30.507"N	104°42'11.295"W	3.22	
3989.00	9.900	189.380	3913.99	-505.38	-518.17	-147.14	40°03'30.328"N	104°42'11.338"W	2.99	
4084.00	8.850	197.890	4007.72	-520.07	-533.18	-150.72	40°03'30.180"N	104°42'11.384"W	1.83	
4178.00	10.940	204.520	4100.32	-534.57	-548.18	-156.64	40°03'30.032"N	104°42'11.460"W	2.53	
4272.00	12.970	200.970	4192.28	-551.92	-566.15	-164.12	40°03'29.854"N	104°42'11.557"W	2.30	
4366.00	12.440	199.990	4283.98	-570.67	-585.51	-171.35	40°03'29.663"N	104°42'11.650"W	0.61	
4460.00	10.880	198.290	4376.04	-588.08	-603.45	-177.60	40°03'29.486"N	104°42'11.730"W	1.70	
4554.00	11.690	201.120	4468.22	-604.86	-620.76	-183.81	40°03'29.315"N	104°42'11.810"W	1.04	
4649.00	12.920	195.830	4561.04	-623.51	-639.96	-190.18	40°03'29.125"N	104°42'11.892"W	1.76	
4743.00	11.100	195.420	4652.98	-641.89	-658.79	-195.45	40°03'28.939"N	104°42'11.960"W	1.94	
4837.00	12.600	193.560	4744.97	-660.15	-677.48	-200.26	40°03'28.754"N	104°42'12.021"W	1.65	
4931.00	14.190	192.500	4836.41	-680.93	-698.70	-205.16	40°03'28.544"N	104°42'12.084"W	1.71	
5026.00	12.770	193.090	4928.79	-702.09	-720.29	-210.06	40°03'28.331"N	104°42'12.147"W	1.50	
5120.00	10.800	194.790	5020.81	-720.32	-738.93	-214.66	40°03'28.147"N	104°42'12.207"W	2.13	
5214.00	8.760	196.490	5113.43	-735.32	-754.31	-218.94	40°03'27.995"N	104°42'12.262"W	2.19	
5308.00	9.750	201.490	5206.21	-749.17	-768.58	-223.89	40°03'27.854"N	104°42'12.325"W	1.36	
5402.00	7.670	196.500	5299.12	-762.20	-782.00	-228.59	40°03'27.721"N	104°42'12.386"W	2.35	
5496.00	7.410	193.980	5392.31	-773.81	-793.90	-231.83	40°03'27.603"N	104°42'12.427"W	0.45	
5590.00	9.400	197.940	5485.30	-786.66	-807.09	-235.66	40°03'27.473"N	104°42'12.477"W	2.20	
5685.00	10.570	192.210	5578.86	-802.19	-822.98	-239.89	40°03'27.316"N	104°42'12.531"W	1.61	
5779.00	10.490	190.930	5671.28	-818.71	-839.81	-243.34	40°03'27.150"N	104°42'12.575"W	0.26	
5873.00	8.120	185.730	5764.03	-833.50	-854.82	-245.63	40°03'27.001"N	104°42'12.605"W	2.67	
5967.00	6.550	187.780	5857.26	-845.27	-866.74	-247.02	40°03'26.884"N	104°42'12.623"W	1.69	
6061.00	5.090	198.360	5950.78	-854.36	-876.01	-249.05	40°03'26.792"N	104°42'12.649"W	1.92	
6156.00	3.490	197.140	6045.51	-860.94	-882.77	-251.23	40°03'26.725"N	104°42'12.677"W	1.69	
6250.00	2.550	187.010	6139.38	-865.65	-887.58	-252.33	40°03'26.678"N	104°42'12.691"W	1.15	
6345.00	1.870	203.270	6234.31	-869.09	-891.11	-253.20	40°03'26.643"N	104°42'12.702"W	0.97	
6439.00	0.600	130.940	6328.29	-870.80	-892.84	-253.44	40°03'26.626"N	104°42'12.705"W	1.90	
6534.00	0.560	104.680	6423.28	-871.31	-893.28	-252.61	40°03'26.621"N	104°42'12.695"W	0.28	
6641.00	0.460	113.240	6530.28	-871.68	-893.58	-251.71	40°03'26.618"N	104°42'12.683"W	0.12	
6722.00	4.040	4.250	6611.21	-869.01	-890.86	-251.20	40°03'26.645"N	104°42'12.677"W	5.20	
6770.00	10.070	1.050	6658.83	-863.15	-884.98	-251.00	40°03'26.703"N	104°42'12.674"W	12.58	
6816.00	15.380	2.070	6703.68	-853.08	-874.85	-250.70	40°03'26.804"N	104°42'12.670"W	11.55	
6864.00	19.290	3.530	6749.49	-838.90	-860.57	-249.99	40°03'26.945"N	104°42'12.661"W	8.20	
6911.00	21.000	0.580	6793.62	-822.82	-844.40	-249.42	40°03'27.104"N	104°42'12.654"W	4.23	
6958.00	23.660	357.630	6837.09	-805.00	-826.55	-249.73	40°03'27.281"N	104°42'12.658"W	6.14	
7005.00	27.530	358.690	6879.47	-784.72	-806.26	-250.37	40°03'27.481"N	104°42'12.666"W	8.29	
7053.00	32.440	0.770	6921.03	-760.80	-782.29	-250.45	40°03'27.718"N	104°42'12.667"W	10.45	
7099.00	38.170	1.170	6958.56	-734.35	-755.72	-249.99	40°03'27.981"N	104°42'12.661"W	12.47	
7147.00	43.230	0.480	6994.94	-703.19	-724.43	-249.55	40°03'28.290"N	104°42'12.655"W	10.58	
7193.00	46.350	1.210	7027.58	-670.92	-692.03	-249.07	40°03'28.610"N	104°42'12.649"W	6.87	
7287.00	57.160	0.640	7085.68	-597.52	-618.32	-247.90	40°03'29.339"N	104°42'12.634"W	11.51	
7381.00	65.830	356.640	7130.51	-515.13	-535.85	-249.98	40°03'30.154"N	104°42'12.661"W	9.95	
7476.00	67.740	355.410	7167.96	-427.83	-448.76	-256.04	40°03'31.014"N	104°42'12.739"W	2.34	
7570.00	74.140	355.840	7198.64	-339.03	-360.21	-262.81	40°03'31.889"N	104°42'12.826"W	6.82	

REFERENCE WELLPATH IDENTIFICATION			
Operator	KERR-MCGEE OIL & GAS ONSHORE LP (LAMBERT STATE PLANE COORD)	Slot	SLOT#19 GOODIN 15N-A6HZ (413'FSL & 1555'FEL, SEC.07)
Area	COLORADO	Well	GOODIN 15N-A6HZ
Field	WELD COUNTY (KERR MCGEE)	Wellbore	GOODIN 15N-A6HZ AWB <101-13320>
Facility	SEC.07-T1N-R65W		

WELLPATH DATA (151 stations) † = interpolated/extrapolated station

MD [ft]	Inclination [°]	Azimuth [°]	TVD [ft]	Vert Sect [ft]	North [ft]	East [ft]	Latitude	Longitude	DLS [°/100ft]	Comments
7670.00	81.060	358.100	7220.10	-241.45	-262.75	-267.94	40°03'32.852"N	104°42'12.892"W	7.26	
7708.00†	82.732	358.466	7225.46	-203.88	-225.15	-269.07	40°03'33.224"N	104°42'12.906"W	4.50	7" Casing Point
7822.00	87.750	359.550	7234.92	-90.51	-111.59	-271.03	40°03'34.346"N	104°42'12.932"W	4.50	
7917.00	89.840	0.380	7236.91	4.19	-16.62	-271.09	40°03'35.285"N	104°42'12.932"W	2.37	
8011.00	92.550	0.660	7234.95	97.82	77.35	-270.23	40°03'36.213"N	104°42'12.921"W	2.90	
8106.00	92.770	0.160	7230.54	192.38	172.24	-269.56	40°03'37.151"N	104°42'12.913"W	0.57	
8201.00	91.600	359.530	7226.92	287.05	267.17	-269.81	40°03'38.089"N	104°42'12.916"W	1.40	
8296.00	90.460	358.990	7225.22	381.84	362.14	-271.04	40°03'39.028"N	104°42'12.932"W	1.33	
8390.00	90.400	359.580	7224.51	475.64	456.13	-272.21	40°03'39.957"N	104°42'12.947"W	0.63	
8485.00	88.090	358.540	7225.76	570.45	551.10	-273.77	40°03'40.895"N	104°42'12.967"W	2.67	
8579.00	88.950	358.380	7228.19	664.31	645.04	-276.30	40°03'41.823"N	104°42'12.999"W	0.93	
8674.00	91.160	359.170	7228.10	759.15	740.01	-278.33	40°03'42.762"N	104°42'13.026"W	2.47	
8768.00	90.700	359.320	7226.57	852.95	833.99	-279.56	40°03'43.691"N	104°42'13.042"W	0.51	
8863.00	89.930	359.930	7226.05	947.72	928.98	-280.19	40°03'44.629"N	104°42'13.050"W	1.03	
8957.00	89.840	0.650	7226.24	1041.40	1022.98	-279.71	40°03'45.558"N	104°42'13.043"W	0.77	
9052.00	88.950	0.420	7227.24	1136.04	1117.97	-278.82	40°03'46.497"N	104°42'13.032"W	0.97	
9146.00	88.730	0.640	7229.14	1229.68	1211.95	-277.95	40°03'47.426"N	104°42'13.021"W	0.33	
9241.00	87.740	359.830	7232.07	1324.32	1306.90	-277.56	40°03'48.364"N	104°42'13.016"W	1.35	
9336.00	89.070	359.640	7234.72	1419.04	1401.86	-278.00	40°03'49.302"N	104°42'13.022"W	1.41	
9430.00	88.670	359.390	7236.57	1512.80	1495.84	-278.80	40°03'50.231"N	104°42'13.032"W	0.50	
9525.00	89.350	359.410	7238.21	1607.58	1590.82	-279.79	40°03'51.170"N	104°42'13.045"W	0.72	
9619.00	90.150	359.210	7238.62	1701.38	1684.81	-280.93	40°03'52.099"N	104°42'13.059"W	0.88	
9713.00	90.240	359.170	7238.30	1795.19	1778.80	-282.25	40°03'53.027"N	104°42'13.076"W	0.10	
9807.00	91.040	359.280	7237.25	1889.00	1872.78	-283.53	40°03'53.956"N	104°42'13.093"W	0.86	
9901.00	89.780	357.690	7236.58	1982.87	1966.74	-286.01	40°03'54.885"N	104°42'13.125"W	2.16	
9995.00	90.550	358.300	7236.31	2076.79	2060.69	-289.30	40°03'55.813"N	104°42'13.167"W	1.05	
10089.00	88.330	357.320	7237.23	2170.71	2154.61	-292.89	40°03'56.741"N	104°42'13.213"W	2.58	
10183.00	88.700	357.290	7239.66	2264.64	2248.47	-297.31	40°03'57.669"N	104°42'13.270"W	0.39	
10278.00	89.100	357.840	7241.49	2359.56	2343.37	-301.35	40°03'58.607"N	104°42'13.322"W	0.72	
10372.00	89.840	357.470	7242.36	2453.50	2437.28	-305.19	40°03'59.535"N	104°42'13.371"W	0.88	
10466.00	91.070	357.100	7241.61	2547.45	2531.17	-309.64	40°04'00.463"N	104°42'13.429"W	1.37	
10560.00	90.400	357.660	7240.40	2641.40	2625.06	-313.94	40°04'01.390"N	104°42'13.484"W	0.93	
10655.00	92.150	358.130	7238.29	2736.30	2719.97	-317.43	40°04'02.328"N	104°42'13.529"W	1.91	
10749.00	91.040	358.010	7235.67	2830.17	2813.88	-320.59	40°04'03.256"N	104°42'13.570"W	1.19	
10843.00	90.060	358.860	7234.77	2924.05	2907.84	-323.16	40°04'04.185"N	104°42'13.603"W	1.38	
10937.00	90.270	357.430	7234.50	3017.96	3001.79	-326.20	40°04'05.113"N	104°42'13.642"W	1.54	
11032.00	91.140	358.070	7233.33	3112.88	3096.71	-329.93	40°04'06.051"N	104°42'13.690"W	1.14	
11126.00	89.070	358.020	7233.16	3206.79	3190.65	-333.14	40°04'06.980"N	104°42'13.731"W	2.20	
11221.00	88.330	358.170	7235.31	3301.68	3285.57	-336.30	40°04'07.918"N	104°42'13.772"W	0.79	
11410.00	90.240	358.550	7237.67	3490.43	3474.47	-341.70	40°04'09.784"N	104°42'13.841"W	1.03	
11504.00	92.090	359.080	7235.76	3584.26	3568.42	-343.65	40°04'10.713"N	104°42'13.866"W	2.05	
11598.00	89.590	358.100	7234.38	3678.12	3662.38	-345.96	40°04'11.641"N	104°42'13.896"W	2.86	
11692.00	87.340	357.270	7236.90	3772.01	3756.26	-349.76	40°04'12.569"N	104°42'13.945"W	2.55	
11787.00	86.670	356.870	7241.86	3866.85	3851.00	-354.60	40°04'13.505"N	104°42'14.007"W	0.82	
11881.00	87.500	357.110	7246.64	3960.70	3944.75	-359.53	40°04'14.432"N	104°42'14.071"W	0.92	

REFERENCE WELLPATH IDENTIFICATION			
Operator	KERR-MCGEE OIL & GAS ONSHORE LP (LAMBERT STATE PLANE COORD)	Slot	SLOT#19 GOODIN 15N-A6HZ (413'FSL & 1555'FEL, SEC.07)
Area	COLORADO	Well	GOODIN 15N-A6HZ
Field	WELD COUNTY (KERR MCGEE)	Wellbore	GOODIN 15N-A6HZ AWB <101-13320>
Facility	SEC.07-T1N-R65W		

WELLPATH DATA (151 stations)										
MD [ft]	Inclination [°]	Azimuth [°]	TVD [ft]	Vert Sect [ft]	North [ft]	East [ft]	Latitude	Longitude	DLS [°/100ft]	Comments
11975.00	88.670	356.530	7249.79	4054.63	4038.55	-364.75	40°04'15.359"N	104°42'14.138"W	1.39	
12070.00	89.010	356.780	7251.71	4149.59	4133.37	-370.29	40°04'16.296"N	104°42'14.209"W	0.44	
12164.00	89.560	356.340	7252.88	4243.57	4227.19	-375.93	40°04'17.223"N	104°42'14.282"W	0.75	
12258.00	91.260	356.660	7252.21	4337.55	4321.01	-381.67	40°04'18.150"N	104°42'14.355"W	1.84	
12353.00	91.100	358.130	7250.25	4432.48	4415.89	-385.98	40°04'19.088"N	104°42'14.411"W	1.56	
12447.00	89.930	357.890	7249.41	4526.40	4509.83	-389.25	40°04'20.016"N	104°42'14.453"W	1.27	
12541.00	91.940	358.180	7247.87	4620.29	4603.76	-392.47	40°04'20.944"N	104°42'14.494"W	2.16	
12635.00	91.840	0.000	7244.77	4714.07	4697.69	-393.96	40°04'21.873"N	104°42'14.514"W	1.94	
12730.00	90.920	359.590	7242.49	4808.78	4792.66	-394.30	40°04'22.811"N	104°42'14.518"W	1.06	
12824.00	88.150	358.790	7243.25	4902.59	4886.64	-395.63	40°04'23.740"N	104°42'14.535"W	3.07	
12919.00	89.870	358.600	7244.89	4997.43	4981.60	-397.79	40°04'24.678"N	104°42'14.563"W	1.82	
13013.00	91.100	357.540	7244.09	5091.34	5075.54	-400.96	40°04'25.606"N	104°42'14.604"W	1.73	
13107.00	90.180	357.730	7243.04	5185.27	5169.45	-404.84	40°04'26.535"N	104°42'14.654"W	1.00	
13202.00	89.720	357.840	7243.13	5280.20	5264.38	-408.51	40°04'27.473"N	104°42'14.701"W	0.50	
13265.00	89.810	357.490	7243.39	5343.16	5327.33	-411.08	40°04'28.095"N	104°42'14.734"W	0.57	Last BHI MWD+IFR Surveys
13320.00	89.810	357.490	7243.57	5398.13	5382.27	-413.48	40°04'28.638"N	104°42'14.765"W	0.00	Projection to Bit

HOLE & CASING SECTIONS - Ref Wellbore: GOODIN 15N-A6HZ AWB <101-13320> Ref Wellpath: GOODIN 15N-A6HZ AWP									
String/Diameter	Start MD [ft]	End MD [ft]	Interval [ft]	Start TVD [ft]	End TVD [ft]	Start N/S [ft]	Start E/W [ft]	End N/S [ft]	End E/W [ft]
13.5in Open Hole	25.00	1600.00	1575.00	25.00	1599.94	0.00	0.00	0.65	-3.43
9.625in Casing Surface	25.00	1590.00	1565.00	25.00	1589.94	0.00	0.00	0.54	-3.48
8.75in Open Hole	1600.00	7719.00	6119.00	1599.94	7226.81	0.65	-3.43	-214.23	-269.35
7in Casing Intermediate	25.00	7708.00	7683.00	25.00	7225.46	0.00	0.00	-225.15	-269.07
6.125in Open Hole	7719.00	13320.00	5601.00	7226.81	7243.57	-214.23	-269.35	5382.27	-413.48

TARGETS								
Name	TVD [ft]	North [ft]	East [ft]	Grid East [US ft]	Grid North [US ft]	Latitude	Longitude	Shape
SEC.06-T1N-R65W SECTION LINES	-14.00	4.13	-2082.05	3221106.82	1265636.47	40°03'35.489"N	104°42'36.223"W	polygon
SEC.07-T1N-R65W SECTION LINES	0.00	0.00	-30.01	3223158.73	1265650.78	40°03'35.449"N	104°42'09.832"W	polygon
GOODIN 15N-A6HZ BHL ON PLAT REV-1 (500'FSL & 1902'FEL, SEC.06)	7239.00	5382.79	-401.91	3222738.46	1271029.80	40°04'28.643"N	104°42'14.616"W	point
GOODIN 15N-A6HZ LANDBOX	7239.00	0.00	-14.85	3223173.89	1265650.92	40°03'35.449"N	104°42'09.637"W	polygon



Actual Wellpath Report
GOODIN 15N-A6HZ AWP
Page 6 of 7



REFERENCE WELLPATH IDENTIFICATION			
Operator	KERR-MCGEE OIL & GAS ONSHORE LP (LAMBERT STATE PLANE COORD)	Slot	SLOT#19 GOODIN 15N-A6HZ (413'FSL & 1555'FEL, SEC.07)
Area	COLORADO	Well	GOODIN 15N-A6HZ
Field	WELD COUNTY (KERR MCGEE)	Wellbore	GOODIN 15N-A6HZ AWB <101-13320>
Facility	SEC.07-T1N-R65W		

WELLPATH COMPOSITION - Ref Wellbore: GOODIN 15N-A6HZ AWB <101-13320> Ref Wellpath: GOODIN 15N-A6HZ AWP				
Start MD [ft]	End MD [ft]	Positional Uncertainty Model	Log Name/Comment	Wellbore
25.00	1555.00	ISCWSA MWD, Rev. 2 (Standard)	CATHEDRAL MWD SURVEYS <101-1555>	GOODIN 15N-A6HZ AWB <101-13320>
1555.00	7670.00	NaviTrak (MAGCORR,IFR)	BHI MWD+IFR SURVEYS 8 3/4" HOLE <1630-7670>	GOODIN 15N-A6HZ AWB <101-13320>
7670.00	13265.00	NaviTrak (MAGCORR,IFR)	BHI MWD+IFR SURVEY 6 1/8" HOLE <7822-13265>	GOODIN 15N-A6HZ AWB <101-13320>
13265.00	13320.00	Blind Drilling (std)	Projection to bit	GOODIN 15N-A6HZ AWB <101-13320>



Actual Wellpath Report
GOODIN 15N-A6HZ AWP
Page 7 of 7



REFERENCE WELLPATH IDENTIFICATION			
Operator	KERR-MCGEE OIL & GAS ONSHORE LP (LAMBERT STATE PLANE COORD)	Slot	SLOT#19 GOODIN 15N-A6HZ (413'FSL & 1555'FEL, SEC.07)
Area	COLORADO	Well	GOODIN 15N-A6HZ
Field	WELD COUNTY (KERR MCGEE)	Wellbore	GOODIN 15N-A6HZ AWB <101-13320>
Facility	SEC.07-T1N-R65W		

WELLPATH COMMENTS				
MD [ft]	Inclination [°]	Azimuth [°]	TVD [ft]	Comment
25.00	0.000	161.500	25.00	Tie-On
101.00	0.300	161.500	101.00	Begin CATHEDRAL MWD Surveys
1555.00	0.600	18.800	1554.94	Tie-Into CATHEDRAL MWD Surveys
1630.00	0.730	25.900	1629.94	Begin BHI MWD+IFR Surveys
7708.00	82.732	358.466	7225.46	7" Casing Point
13265.00	89.810	357.490	7243.39	Last BHI MWD+IFR Surveys
13320.00	89.810	357.490	7243.57	Projection to Bit