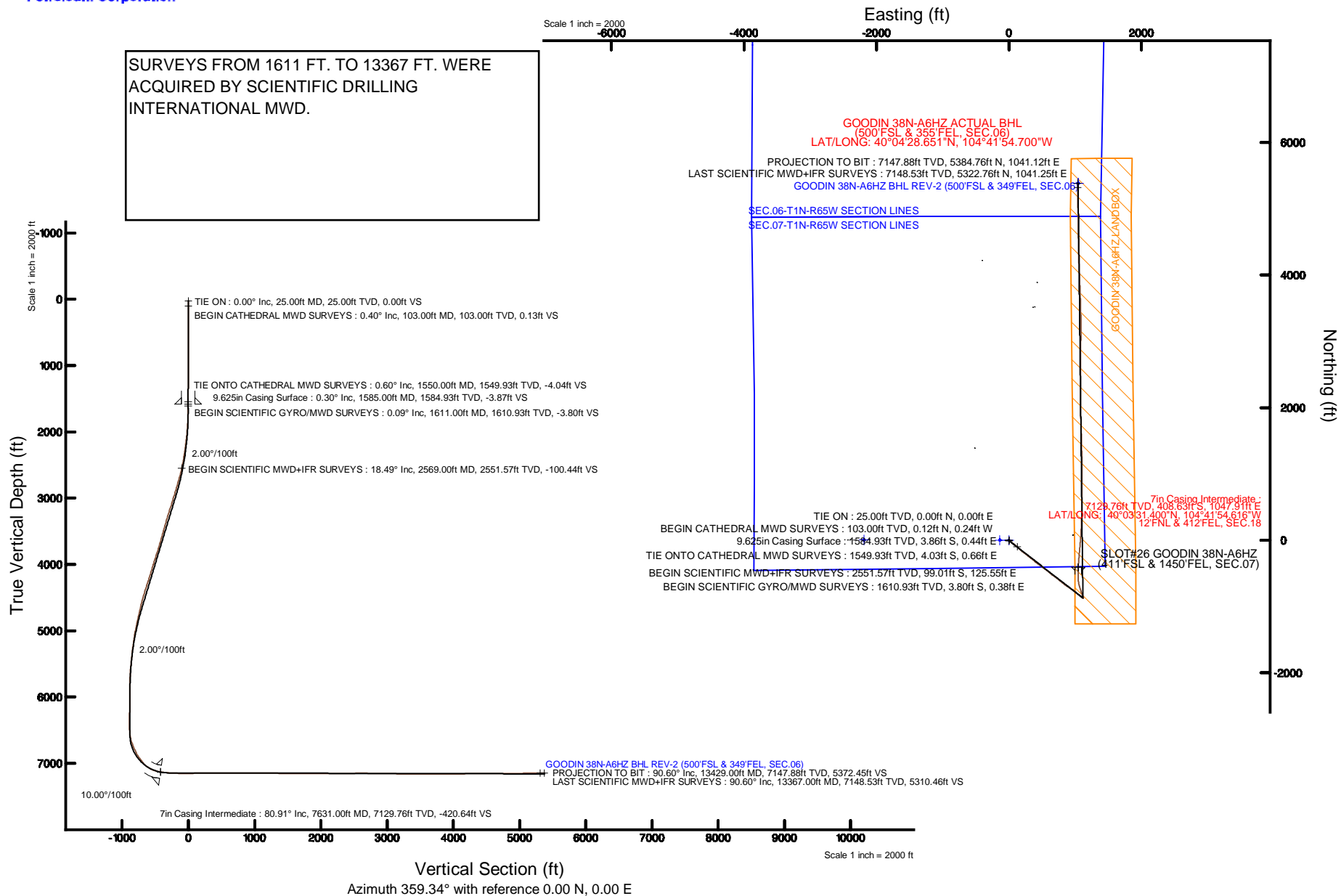


Location:	COLORADO	Slot:	SLOT#26 GOODIN 38N-A6HZ (411'FSL & 1450'FEL, SEC.07)
Field:	WELD COUNTY (KERR MCGEE)	Well:	GOODIN 38N-A6HZ
Facility:	SEC.07-T1N-R65W	Wellbore:	GOODIN 38N-A6HZ PWB

Plot reference wellpath is GOODIN 38N-A6HZ (REV-C.0) PWP	
True vertical depths are referenced to H&P 307 (25KB) (RKB)	Grid System: NAD83 / Lambert Colorado SP, Northern Zone (501), US feet
Measured depths are referenced to H&P 307 (25KB) (RKB)	North Reference: True north
H&P 307 (25KB) (RKB) to Mean Sea Level: 5004 feet	Scale: True distance
Mean Sea Level to Mud line (At Slot: SLOT#26 GOODIN 38N-A6HZ (411'FSL & 1450'FEL, SEC.07)): 0 feet	Depths are in feet
Coordinates are in feet referenced to Slot	Created by: precain on 6/25/2015



ANADARKO E&P ONSHORE LLC

SURVEY REPORT

GOODIN 38N-A6HZ

H&P 307

2/23/2015



The **Ultimate Partner** In Wellbore Placement

CUSTOMER ANADARKO E&P ONSHORE LLC
PROJECT GOODIN 38N-A6HZ
FIELD WATTENBERG

SDI JOB NO. 258160
SDI DISTRICT Casper
SDI KIT/UNIT C11-EM#70 / 77-MP-42

SITE INFORMATION

Site Name GOODIN PAD
Lat/Long
Northing
Easting

Section 07
Township 1N
Range 65W

MAP INFORMATION

North Reference True North
Grid Correction
System US State Plane 1983
Datum North American Datum 1983 (GRS 1980)
Map Zone LAMBERT COLORADO SP NORTHERN ZONE
(501) FEET



WELL INFORMATION

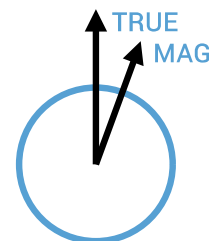
Lat/Long 40° 3' 35.438" N, 104° 42' 8.093" W
Northing 1,265,650.89 ft
Easting 3,223,293.94 ft
UWI 05-123-40748

DEPTH AND ELEVATION REFERENCE

Ground Level 5004 ft above Mean Sea Level
Reference Datum RKB
Reference Height 25 ft above G.L.
Reference Elevation 5029 ft

VERTICAL SECTION REFERENCE

+N/-S 0 ft
+E/-W 0 ft
Proposal Direction 359.34°
Calculation Method Minimum Curvature



GEOMAGNETIC REFERENCE INFORMATION

Local Gravity: 999.032 mG [computed]

MD	MODEL	DATE	DECLINATION	MAG TO TRUE
0-5679 ft	MAG-VAR	20 Feb 2015	8.14°	add 8.14°
5679-9055 ft	MAG-VAR	20 Feb 2015	8.08°	add 8.08°
9055-13367 ft	MAG-VAR	20 Feb 2015	8.06°	add 8.06°

WELL NOTES

SURVEYS FROM 0 FT. TO 1550 FT. WERE ACQUIRED BY CATHEDRAL MWD.

SURVEYS FROM 1611 FT. TO 13367 FT. WERE ACQUIRED BY SCIENTIFIC DRILLING INTERNATIONAL MWD.

OPERATORS

C. COLLINS, S. NEJAD, S. WAXLER

SDI Operator Name (Printed)

SIGNATURE

DATE

MD ft	INC deg	AZIM deg	TVD ft	VS ft	+N/-S ft	+E/-W ft	DLS °/100ft
0.00	0.00	297.10	0.00	0.00	0.00	0.00	Invalid
25.00	0.00	297.10	25.00	0.00	0.00	0.00	0.00
103.00	0.40	297.10	103.00	0.13	0.12	-0.24	0.51
181.00	0.40	307.20	181.00	0.42	0.41	-0.70	0.09
259.00	0.40	300.20	259.00	0.73	0.71	-1.15	0.06
339.00	0.40	295.60	338.99	0.99	0.98	-1.65	0.04
419.00	0.40	318.20	418.99	1.33	1.30	-2.08	0.20
499.00	0.40	321.40	498.99	1.76	1.73	-2.45	0.03
579.00	0.20	313.70	578.99	2.08	2.05	-2.72	0.25
659.00	0.10	300.10	658.99	2.21	2.18	-2.88	0.13
739.00	0.20	238.60	738.99	2.17	2.14	-3.06	0.22
819.00	0.60	125.80	818.99	1.85	1.82	-2.84	0.88
899.00	0.70	122.50	898.98	1.34	1.31	-2.09	0.13
979.00	0.70	129.90	978.98	0.75	0.74	-1.30	0.11
1059.00	0.80	134.60	1058.97	0.04	0.03	-0.53	0.15
1139.00	1.00	132.30	1138.96	-0.83	-0.83	0.38	0.25
1219.00	0.80	143.90	1218.95	-1.77	-1.75	1.23	0.34
1299.00	0.90	154.80	1298.94	-2.79	-2.77	1.83	0.24
1379.00	0.60	203.50	1378.93	-3.75	-3.72	1.93	0.85
1459.00	0.50	254.30	1458.93	-4.22	-4.20	1.42	0.60
1550.00	0.60	306.00	1549.93	-4.04	-4.03	0.66	0.54
1611.00	0.09	339.17	1610.93	-3.80	-3.80	0.38	0.87
1665.00	1.06	117.60	1664.92	-4.00	-3.99	0.81	2.08
1740.00	2.46	123.13	1739.89	-5.22	-5.19	2.77	1.89
1805.00	3.43	122.96	1804.80	-7.08	-7.01	5.57	1.49
1862.00	4.57	127.35	1861.66	-9.42	-9.32	8.81	2.08
1924.00	6.33	134.03	1923.38	-13.35	-13.20	13.23	3.01
2111.00	10.73	123.75	2108.27	-30.45	-30.05	35.14	2.48
2207.00	12.32	124.80	2202.33	-41.45	-40.86	50.98	1.66
2300.00	13.64	126.21	2292.96	-53.78	-53.00	67.97	1.46
2394.00	15.13	128.85	2384.01	-68.24	-67.24	86.47	1.74
2489.00	16.80	129.37	2475.34	-84.96	-83.73	106.74	1.77
2569.00	18.49	128.84	2551.57	-100.47	-99.03	125.56	2.11

MD ft	INC deg	AZIM deg	TVD ft	VS ft	+N/-S ft	+E/-W ft	DLS °/100ft
2664.00	21.04	135.27	2640.98	-122.31	-120.60	149.30	3.53
2758.00	22.68	131.16	2728.22	-146.52	-144.52	174.83	2.39
2852.00	23.50	130.78	2814.69	-171.01	-168.68	202.66	0.88
2947.00	25.61	127.90	2901.10	-196.34	-193.67	233.21	2.56
3041.00	27.21	125.68	2985.29	-221.74	-218.69	266.70	1.99
3135.00	25.43	128.88	3069.54	-247.33	-243.89	299.87	2.42
3230.00	26.72	129.58	3154.87	-274.11	-270.30	332.21	1.39
3324.00	26.14	128.95	3239.05	-300.96	-296.78	364.60	0.68
3418.00	25.29	127.66	3323.74	-326.62	-322.07	396.60	1.09
3513.00	25.57	126.89	3409.54	-351.69	-346.77	429.06	0.46
3607.00	25.12	125.02	3494.49	-375.69	-370.40	461.63	0.98
3701.00	25.86	125.78	3579.34	-399.51	-393.84	494.60	0.86
3796.00	25.57	127.25	3664.93	-424.41	-418.36	527.73	0.74
3890.00	25.79	127.87	3749.65	-449.61	-443.19	560.01	0.37
3984.00	26.40	130.69	3834.07	-476.16	-469.37	592.00	1.47
4078.00	25.80	130.56	3918.49	-503.44	-496.30	623.38	0.64
4172.00	25.75	128.67	4003.14	-529.87	-522.36	654.86	0.87
4266.00	26.63	125.89	4087.49	-555.36	-547.47	687.88	1.61
4360.00	27.61	125.67	4171.15	-580.80	-572.52	722.64	1.05
4455.00	28.72	127.62	4254.90	-607.98	-599.29	758.61	1.52
4643.00	25.15	130.31	4422.48	-662.18	-652.72	824.88	2.00
4737.00	24.77	126.26	4507.71	-687.11	-677.30	856.00	1.86
4831.00	23.44	123.85	4593.51	-709.54	-699.36	887.41	1.76
4925.00	22.44	123.22	4680.07	-730.13	-719.61	917.95	1.09
5019.00	21.78	123.32	4767.16	-749.88	-739.01	947.53	0.71
5114.00	20.66	127.44	4855.72	-770.07	-758.89	975.56	1.96
5208.00	17.16	129.72	4944.64	-789.29	-777.83	999.40	3.80
5302.00	15.89	129.22	5034.75	-806.53	-794.84	1020.04	1.35
5397.00	13.50	128.40	5126.64	-821.86	-809.95	1038.81	2.53
5491.00	10.97	128.59	5218.50	-834.44	-822.35	1054.40	2.70
5585.00	11.09	125.82	5310.76	-845.47	-833.21	1068.72	0.58
5679.00	9.72	126.78	5403.21	-855.67	-843.25	1082.41	1.46
5773.00	8.25	132.26	5496.06	-865.09	-852.54	1093.76	1.81

MD ft	INC deg	AZIM deg	TVD ft	VS ft	+N/-S ft	+E/-W ft	DLS °/100ft
5867.00	8.16	126.56	5589.10	-873.72	-861.06	1104.11	0.87
5961.00	5.57	120.42	5682.42	-880.11	-867.34	1113.41	2.87
6056.00	3.68	114.47	5777.10	-883.78	-870.94	1120.16	2.05
6150.00	1.72	117.54	5870.99	-885.73	-872.84	1124.15	2.08
6244.00	0.92	113.89	5964.97	-886.71	-873.80	1126.09	0.87
6338.00	0.92	67.48	6058.96	-886.74	-873.81	1127.48	0.77
6432.00	0.40	203.42	6152.95	-886.76	-873.83	1128.05	1.32
6526.00	0.77	181.01	6246.95	-887.70	-874.76	1127.91	0.46
6621.00	0.27	180.05	6341.94	-888.56	-875.63	1127.89	0.53
6731.00	0.44	299.61	6451.94	-888.61	-875.68	1127.53	0.56
6810.00	3.09	339.48	6530.90	-886.45	-873.54	1126.52	3.50
6856.00	9.94	346.23	6576.58	-881.42	-868.51	1125.14	14.96
6904.00	14.15	337.56	6623.51	-871.93	-859.06	1121.91	9.53
6951.00	16.93	342.83	6668.79	-860.03	-847.21	1117.70	6.62
6999.00	21.71	339.98	6714.08	-844.94	-832.18	1112.60	10.16
7046.00	25.22	339.82	6757.18	-827.30	-814.61	1106.16	7.47
7093.00	26.16	342.07	6799.54	-807.96	-795.35	1099.52	2.88
7140.00	28.38	340.61	6841.31	-787.49	-774.95	1092.62	4.93
7187.00	33.03	343.32	6881.71	-764.58	-752.13	1085.23	10.32
7234.00	35.34	343.23	6920.59	-739.21	-726.84	1077.63	4.92
7281.00	39.51	344.01	6957.90	-711.71	-699.44	1069.58	8.93
7328.00	41.46	344.08	6993.65	-682.28	-670.10	1061.19	4.15
7375.00	47.36	349.42	7027.22	-650.20	-638.10	1053.74	14.86
7422.00	53.75	356.55	7057.08	-614.17	-602.13	1049.42	17.92
7469.00	61.62	358.53	7082.19	-574.51	-562.48	1047.75	17.11
7516.00	67.91	359.17	7102.22	-532.02	-519.99	1046.90	13.44
7563.00	75.63	359.69	7116.92	-487.41	-475.39	1046.46	16.46
7581.00	78.72	0.92	7120.91	-469.87	-457.84	1046.56	18.44
7733.00	85.38	4.98	7141.94	-319.75	-307.62	1054.35	5.12
7827.00	87.35	4.87	7147.90	-226.39	-214.16	1062.41	2.10
7922.00	88.63	5.81	7151.24	-131.97	-119.64	1071.24	1.67
8016.00	90.20	4.84	7152.21	-38.49	-26.05	1079.97	1.97
8111.00	91.51	3.69	7150.79	56.14	68.67	1087.04	1.83

MD ft	INC deg	AZIM deg	TVD ft	VS ft	+N/-S ft	+E/-W ft	DLS °/100ft
8205.00	90.64	3.02	7149.02	149.90	162.49	1092.54	1.17
8299.00	91.14	2.75	7147.57	243.70	256.36	1097.28	0.61
8394.00	89.56	1.34	7146.98	338.59	351.29	1100.67	2.23
8488.00	89.23	1.18	7147.97	432.53	445.26	1102.73	0.40
8583.00	89.66	1.16	7148.89	527.48	540.24	1104.67	0.46
8677.00	89.87	0.91	7149.27	621.44	634.22	1106.37	0.34
8771.00	90.81	0.28	7148.72	715.41	728.22	1107.34	1.21
8866.00	90.30	359.37	7147.80	810.40	823.21	1107.04	1.10
8961.00	90.07	359.77	7147.50	905.40	918.21	1106.33	0.49
9055.00	90.57	358.66	7146.97	999.40	1012.19	1105.04	1.29
9150.00	89.87	358.87	7146.61	1094.39	1107.17	1102.99	0.77
9245.00	89.06	359.95	7147.50	1189.39	1202.16	1102.02	1.41
9339.00	88.89	359.15	7149.18	1283.37	1296.14	1101.28	0.87
9434.00	89.33	359.74	7150.66	1378.36	1391.12	1100.35	0.77
9528.00	88.66	358.18	7152.31	1472.34	1485.09	1098.64	1.80
9623.00	88.76	357.45	7154.45	1567.28	1580.00	1095.03	0.77
9717.00	89.97	356.99	7155.50	1661.21	1673.88	1090.47	1.38
9812.00	90.44	359.52	7155.17	1756.18	1768.83	1087.58	2.70
9907.00	90.67	358.20	7154.25	1851.17	1863.80	1085.69	1.41
10001.00	90.23	359.46	7153.51	1945.16	1957.78	1083.76	1.42
10095.00	90.57	0.52	7152.85	2039.15	2051.77	1083.75	1.18
10190.00	90.74	359.96	7151.77	2134.13	2146.76	1084.15	0.62
10285.00	89.83	359.73	7151.29	2229.13	2241.76	1083.89	0.98
10379.00	90.00	0.47	7151.43	2323.12	2335.76	1084.05	0.81
10474.00	90.17	359.70	7151.29	2418.11	2430.76	1084.20	0.83
10568.00	90.84	359.40	7150.46	2512.11	2524.75	1083.47	0.78
10662.00	89.80	0.12	7149.94	2606.10	2618.75	1083.07	1.34
10756.00	89.63	0.61	7150.41	2700.08	2712.75	1083.67	0.56
10850.00	90.00	0.36	7150.71	2794.06	2806.74	1084.46	0.48
10944.00	89.83	0.19	7150.85	2888.05	2900.74	1084.91	0.25
11038.00	88.29	1.26	7152.39	2982.01	2994.72	1086.10	2.00
11132.00	87.76	0.63	7155.63	3075.91	3088.65	1087.65	0.87
11227.00	89.16	359.92	7158.19	3170.86	3183.61	1088.11	1.66

MD ft	INC deg	AZIM deg	TVD ft	VS ft	+N/-S ft	+E/-W ft	DLS °/100ft
11321.00	88.79	0.17	7159.87	3264.84	3277.59	1088.18	0.48
11415.00	89.26	358.80	7161.46	3358.82	3371.57	1087.33	1.54
11509.00	90.47	358.88	7161.68	3452.82	3465.55	1085.43	1.29
11604.00	90.10	358.04	7161.21	3547.80	3560.51	1082.87	0.96
11698.00	89.97	357.82	7161.15	3641.78	3654.45	1079.48	0.27
11792.00	91.08	358.02	7160.30	3735.74	3748.39	1076.06	1.20
11886.00	90.74	357.61	7158.81	3829.70	3842.31	1072.48	0.56
11981.00	90.34	358.09	7157.92	3924.66	3937.23	1068.92	0.66
12075.00	89.63	357.33	7157.95	4018.62	4031.16	1065.17	1.10
12170.00	90.27	357.13	7158.03	4113.56	4126.05	1060.58	0.70
12264.00	91.01	358.59	7156.98	4207.52	4219.97	1057.08	1.74
12359.00	91.11	358.66	7155.23	4302.49	4314.93	1054.80	0.13
12453.00	90.03	359.19	7154.29	4396.48	4408.91	1053.04	1.28
12547.00	90.07	359.46	7154.21	4490.48	4502.90	1051.94	0.29
12642.00	90.03	359.64	7154.13	4585.48	4597.90	1051.20	0.20
12830.00	90.81	359.27	7152.75	4773.48	4785.88	1049.42	0.46
12924.00	89.77	358.98	7152.28	4867.47	4879.87	1047.98	1.15
13019.00	90.60	358.28	7151.98	4962.46	4974.84	1045.71	1.14
13113.00	91.44	357.93	7150.30	5056.43	5068.77	1042.61	0.97
13207.00	89.97	0.13	7149.15	5150.41	5162.74	1041.02	2.82
13302.00	90.17	0.19	7149.04	5245.40	5257.74	1041.29	0.22
13367.00	90.60	359.88	7148.60	5310.39	5322.74	1041.33	0.83