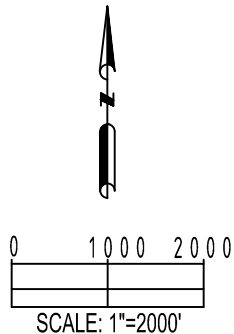
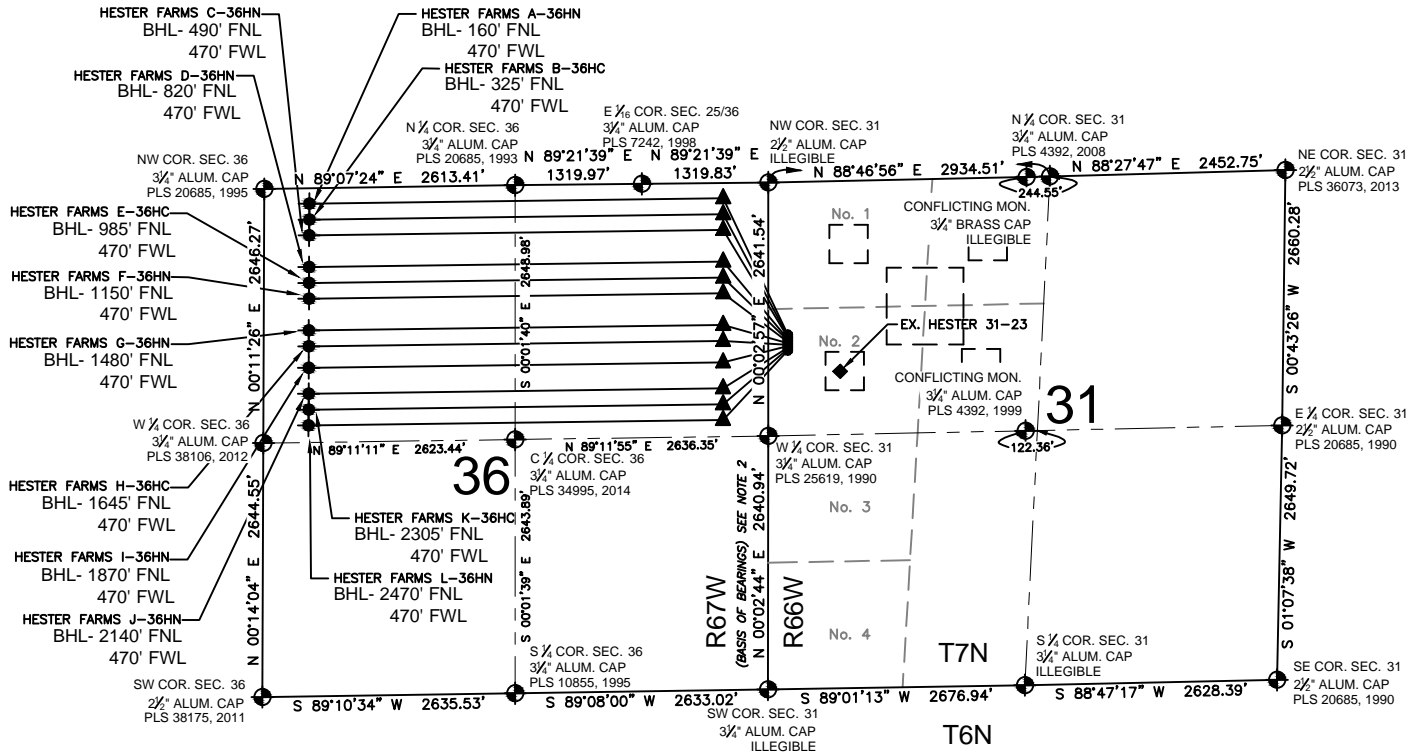


# HESTER FARMS 31-H PAD MULTI-WELL PLAN



## LEGEND

- = EXISTING MONUMENT
- = CALCULATED POSITION
- = PROPOSED WELL
- ▲ = LANDING POINT
- ◆ = BOTTOM HOLE
- ◆ = EXISTING WELL
- LP = LANDING POINT
- BH = BOTTOM HOLE

## NOTES:

- THIS FIELD SURVEY CONFORMS TO THE MINIMUM STANDARDS SET BY THE C.O.G.C.C., RULE NO. 215
- BEARINGS ARE BASED UPON THE ASSUMPTION THAT THE WEST LINE OF THE SOUTHWEST QUARTER OF SECTION 31, BEARS N00°02'44"E BETWEEN THE MONUMENTS SHOWN HEREON.
- GRID DISTANCES ARE SHOWN, AS GPS MEASURED IN THE FIELD, WITH TIES TO WELLS MEASURED PERPENDICULAR TO SECTION LINES. TO GET GROUND DISTANCES MULTIPLY THE SHOWN DISTANCE BY 1.000264177
- FIELD VERIFICATION OF MONUMENTS COMPLETED APRIL 15, 2015. WELL STAKING COMPLETED ON APRIL 30, 2015.

## NOTES:

HESTER FARMS A-36HN TO BE AT 1589' FNL, 202' FWL.  
 BOTTOM HOLE AT 160' FNL & 470' FWL, SEC 36, T7N, 67W.  
 HESTER FARMS B-36HC TO BE AT 1604' FNL, 202' FWL.  
 BOTTOM HOLE AT 325' FNL & 470' FWL, SEC 36, T7N, 67W.  
 HESTER FARMS C-36HN TO BE AT 1619' FNL, 202' FWL.  
 BOTTOM HOLE AT 490' FNL & 470' FWL, SEC 36, T7N, 67W.  
 HESTER FARMS D-36HN TO BE AT 1634' FNL, 202' FWL.  
 BOTTOM HOLE AT 820' FNL & 470' FWL, SEC 36, T7N, 67W.  
 HESTER FARMS E-36HC TO BE AT 1649' FNL, 202' FWL.  
 BOTTOM HOLE AT 985' FNL & 470' FWL, SEC 36, T7N, 67W.  
 HESTER FARMS F-36HN TO BE AT 1664' FNL, 202' FWL.  
 BOTTOM HOLE AT 1150' FNL & 470' FWL, SEC 36, T7N, 67W.  
 HESTER FARMS G-36HN TO BE AT 1679' FNL, 202' FWL.  
 BOTTOM HOLE AT 1480' FNL & 470' FWL, SEC 36, T7N, 67W.  
 HESTER FARMS H-36HC TO BE AT 1694' FNL, 202' FWL.  
 BOTTOM HOLE AT 1645' FNL & 470' FWL, SEC 36, T7N, 67W.  
 HESTER FARMS I-36HN TO BE AT 1709' FNL, 202' FWL.  
 BOTTOM HOLE AT 1870' FNL & 470' FWL, SEC 36, T7N, 67W.  
 HESTER FARMS J-36HN TO BE AT 1724' FNL, 202' FWL.  
 BOTTOM HOLE AT 2140' FNL & 470' FWL, SEC 36, T7N, 67W.  
 HESTER FARMS K-36HC TO BE AT 1739' FNL, 202' FWL.  
 BOTTOM HOLE AT 2305' FNL & 470' FWL, SEC 36, T7N, 67W.  
 HESTER FARMS L-36HN TO BE AT 1754' FNL, 202' FWL.  
 BOTTOM HOLE AT 2470' FNL & 470' FWL, SEC 36, T7N, 67W.

EX. HESTER 31-23 IS AT 1983' FNL & 749' FWL, SEC. 31, T7N, R66W.

PREPARED BY:



FIELD DATE:

04-30-15

DRAWING DATE:

05-22-15

BY:

KAD

CHECKED BY:

TJN

SITE NAME:

HESTER FARMS 31-H PAD

SURFACE LOCATION:

LOT 2 NW 1/4, SEC. 31, T7N, R66W, 6TH P.M.  
 WELD COUNTY, COLORADO

PREPARED FOR:

