

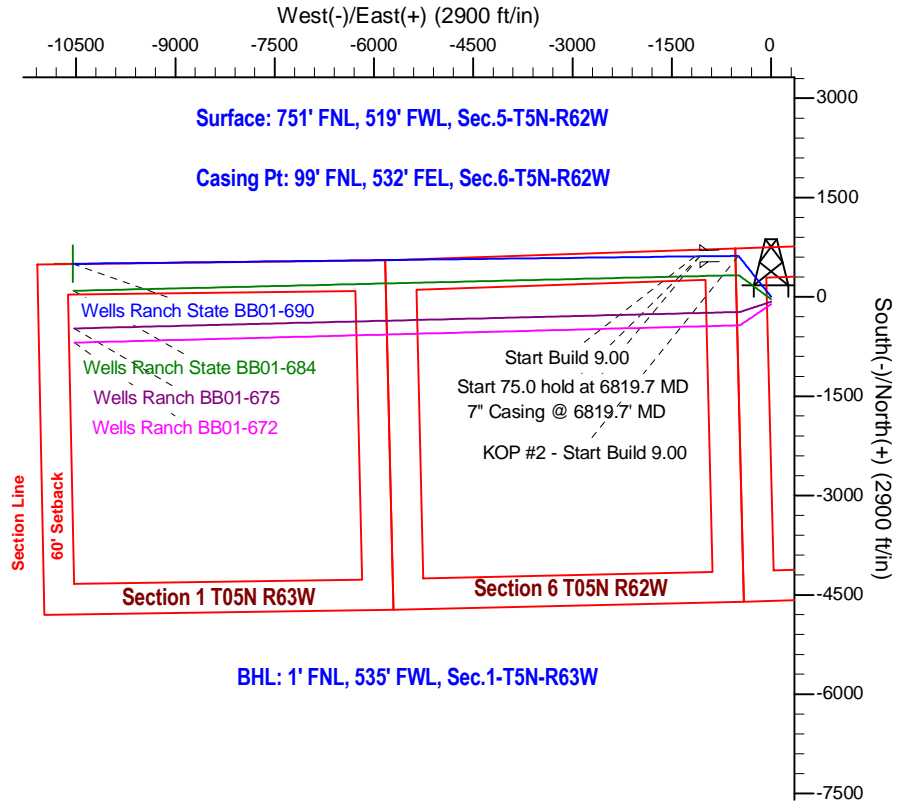
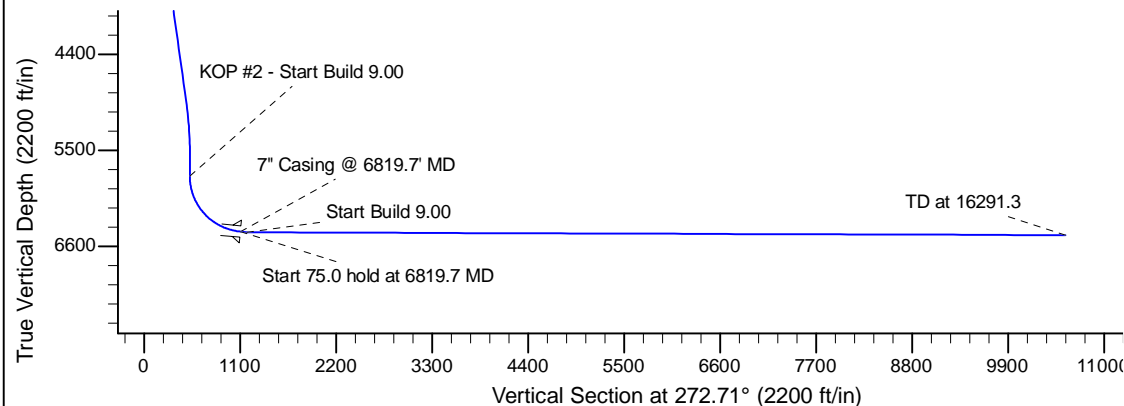
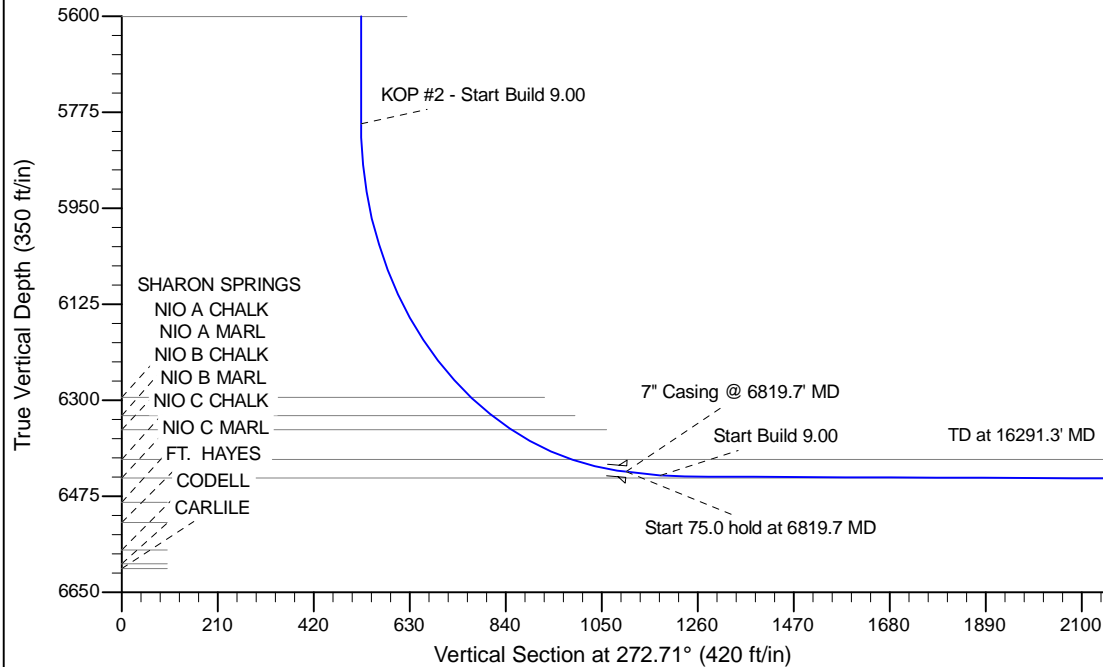
Project: Wattenberg Field  
Site: BB (Sec.5-T05N-R62W) Weld County, CO  
Well: Wells Ranch State BB01-690  
Wellbore: Original Drilling  
Design: APD - Rev 0

# Northern Region Drilling - Working

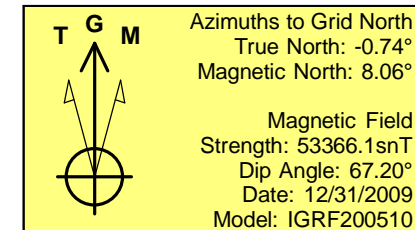
Geodetic System: US State Plane 1983  
Datum: North American Datum 1983  
Ellipsoid: GRS 1980  
Zone: Colorado Northern Zone  
System Datum: Mean Sea Level

## SECTION DETAILS

Sec	MD	Inc	Azi	TVD	+N/-S	+E/-W	Dleg	TFace	VSec	Target
1	0.0	0.00	0.00	0.0	0.0	0.0	0.00	0.00	0.0	
2	1200.0	0.00	0.00	1200.0	0.0	0.0	0.00	0.00	0.0	
3	1800.9	12.02	321.40	1796.5	49.1	-39.2	2.00	321.40	41.5	
4	5008.2	12.02	321.40	4933.5	570.9	-455.8	0.00	0.00	482.4	
5	5609.1	0.00	0.00	5530.0	620.0	-495.0	2.00	180.00	523.8	
6	5875.2	0.00	0.00	5796.1	620.0	-495.0	0.00	0.00	523.8	
7	6819.7	85.00	269.32	6430.3	613.1	-1076.1	9.00	269.32	1103.9	
8	6894.7	85.00	269.32	6436.9	612.2	-1150.8	0.00	0.00	1178.5	
9	6948.0	89.80	269.32	6439.3	611.5	-1204.1	9.00	0.00	1231.7	
10	16291.3	89.80	269.32	6471.9	500.0	-10546.6	0.00	0.00	10558.5	Wells Ranch State BB01-690 BHL 1'FNL, 535'FWL



BHL: 1' FNL, 535' FWL, Sec.1-T5N-R63W



WELL DETAILS: Wells Ranch State BB01-690					
Ground Level: 4702.0					
0.0	0.0	Northing	Easting	Latitude	Longitude
		1402960.70	3318734.48	40.433880	-104.354970
Plan: APD - Rev 0 (Wells Ranch State BB01-690/Original Drilling)					
Created By: Shailey Jewell Date: 7:15, April 21 2015					
OK to submit with 2A as per Noble Drilling 4/21/2015 7:20					