



DDC

3222 N. 6th Mile Rd
Casper, WY 82604**RM-150117**

1":100' - MD

2/8/2015 11:16:14 AM

Oper. Company: Noble Energy**Country:** United States**State / Province:** Colorado**County / Parish:** Weld**Started:** 02/03/2015 06:00 PM**API/UWI:** 05-123-38141**Field:** Greeley**Well:** Reliance E23-69-1HN**Rig:** H&P #326**Ended:** 02/08/2015 11:00 AM**Personnel****Day Hand:** Chris Abbott**Night Hand:** Dreux Smith**Comp. Emp:** DDC**Location****Latitude:** 40° 28' 31.224" N**Longitude:** 104° 38' 14.28" W**Elev. GL:** 4757**Elev. DF:** 30**Elev. KB:** 4757**Hole Data**

Size	From	To
13 3/4	0	811
8 3/4	811	7355
6 1/8	7355	11567

Casing Data

Size	From	To
9 5/8	0	811
7	0	7355
4	0	11567

Bit Sizes

Size	From	To
13 3/4	0	811
8 3/4	811	7355
6 1/8	7355	11567

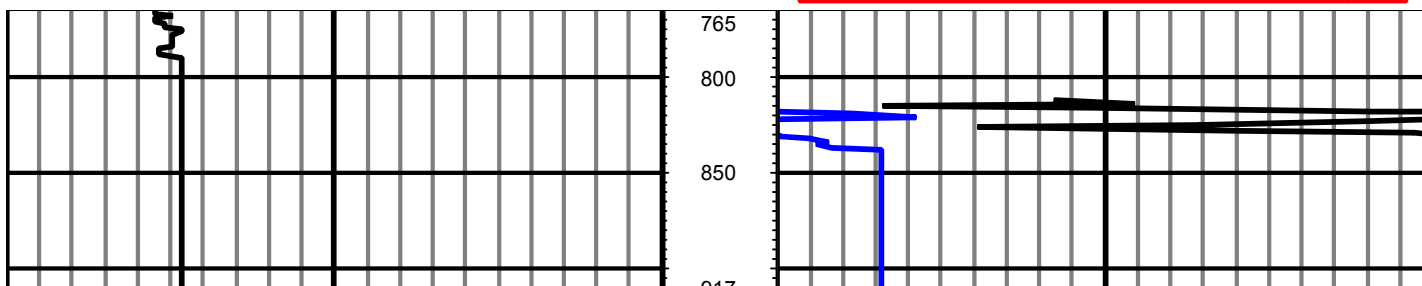
Mud Data

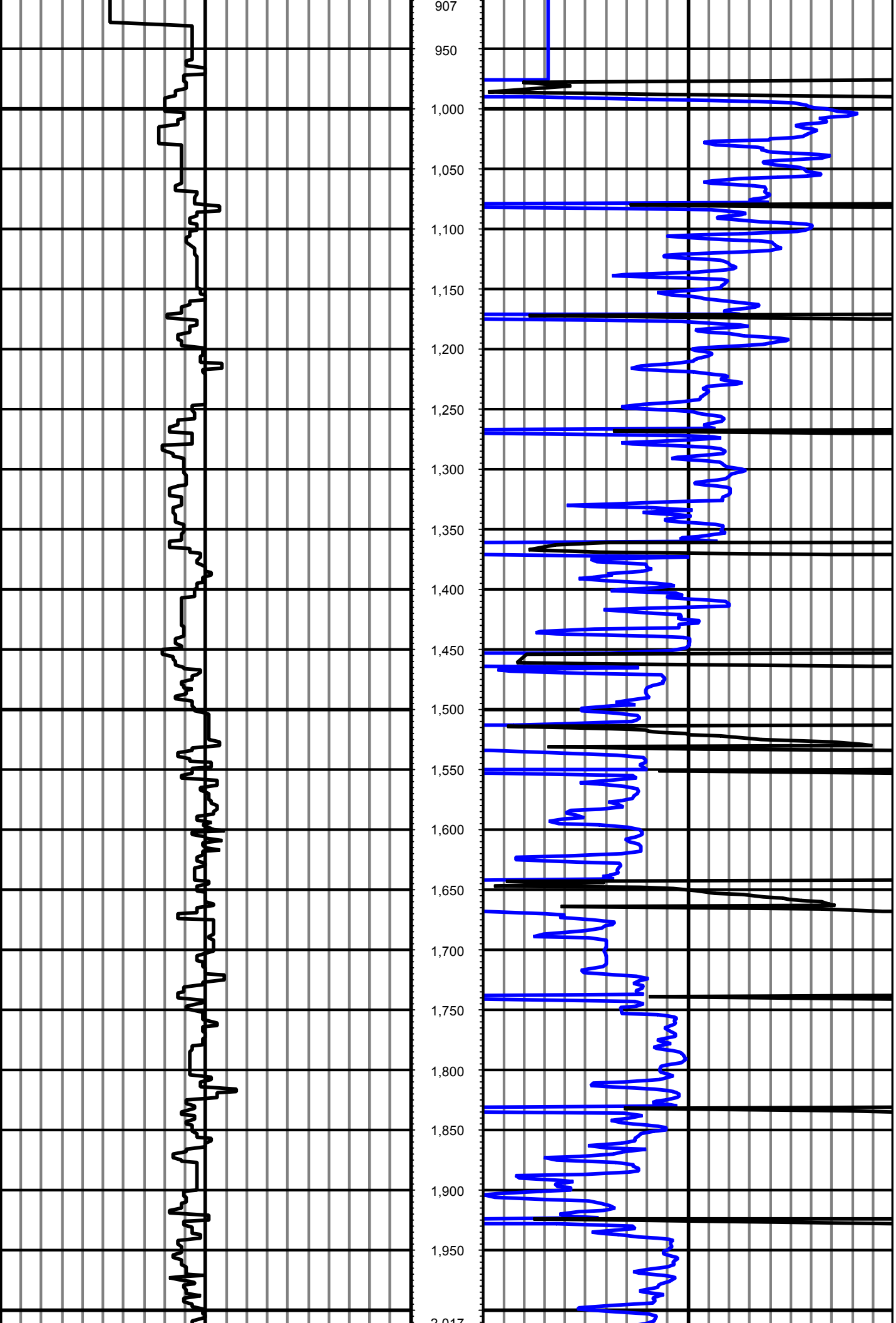
Type	Weight	Density	Viscosity	Rm	Rmf	Rmc	From	To
LSND	9.6		37				811	11567

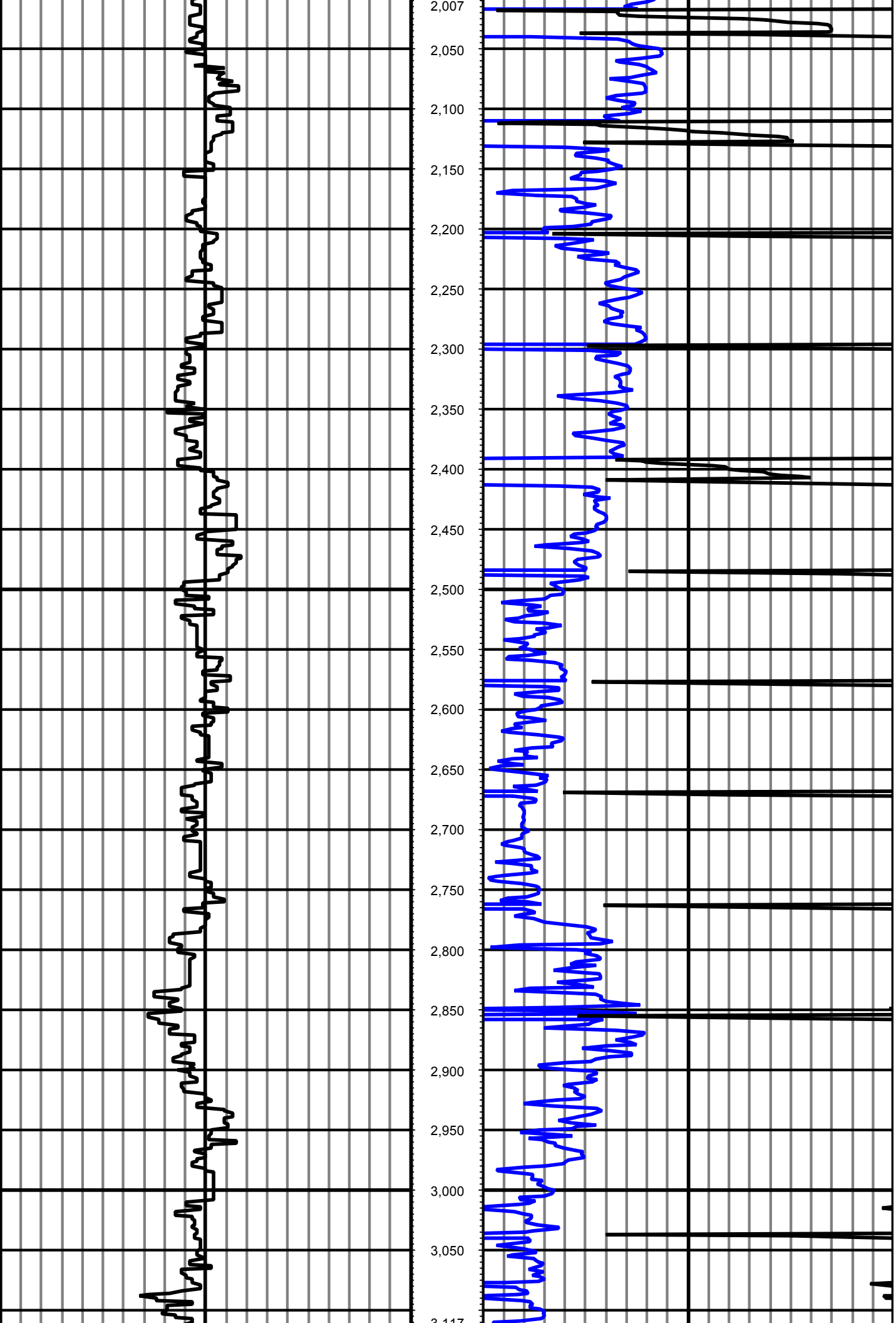
Tool Run Data

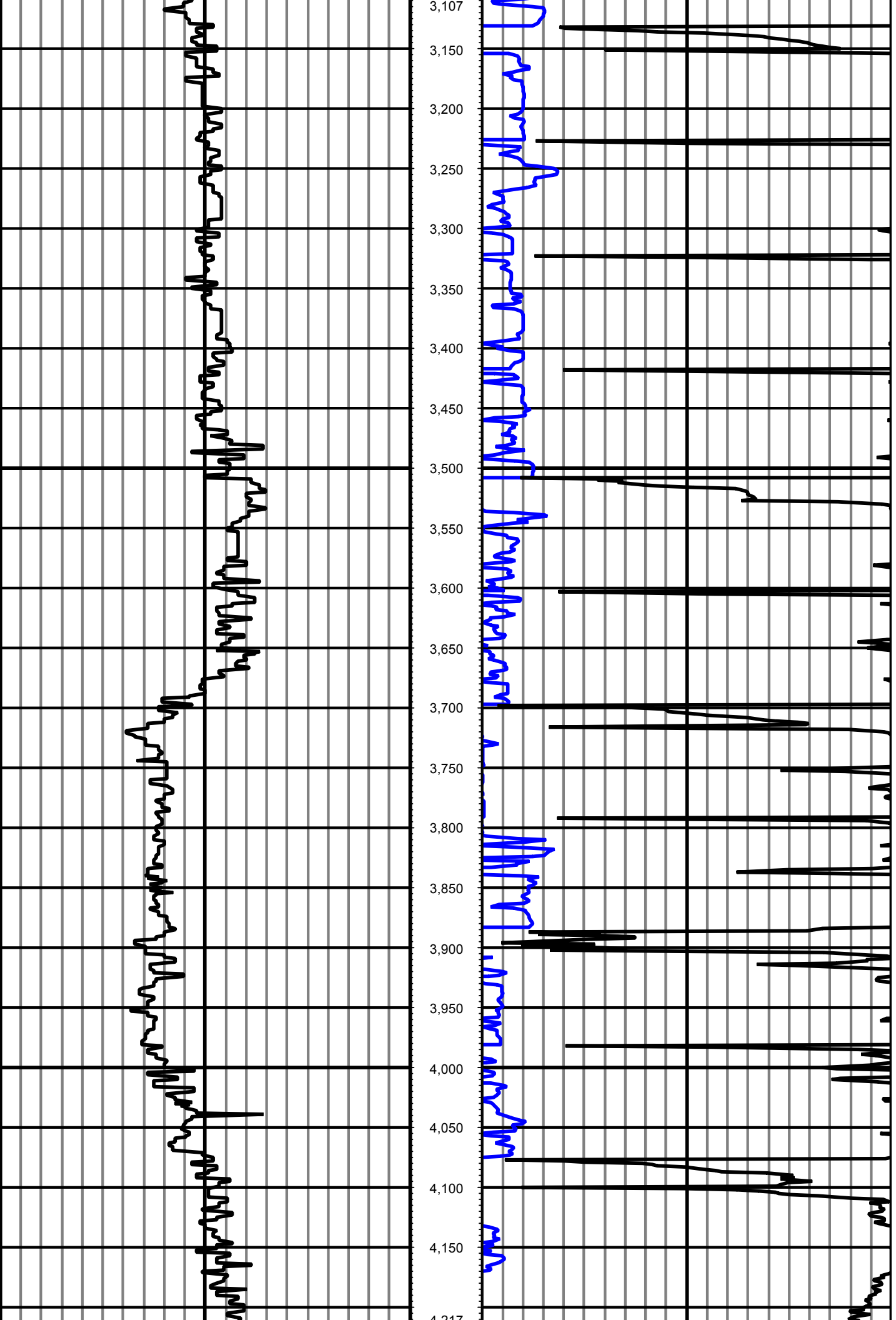
Serial Number	Gamma Offset	Resist. Offset	Start Time	Start Depth	End Time	End Depth
421	47	0	2/3/2015 6:00:44 PM	811	2/5/2015 9:00:44 AM	7365
421	51	0	2/6/2015 8:00:21 AM	7365	2/8/2015 11:00:21 AM	11567

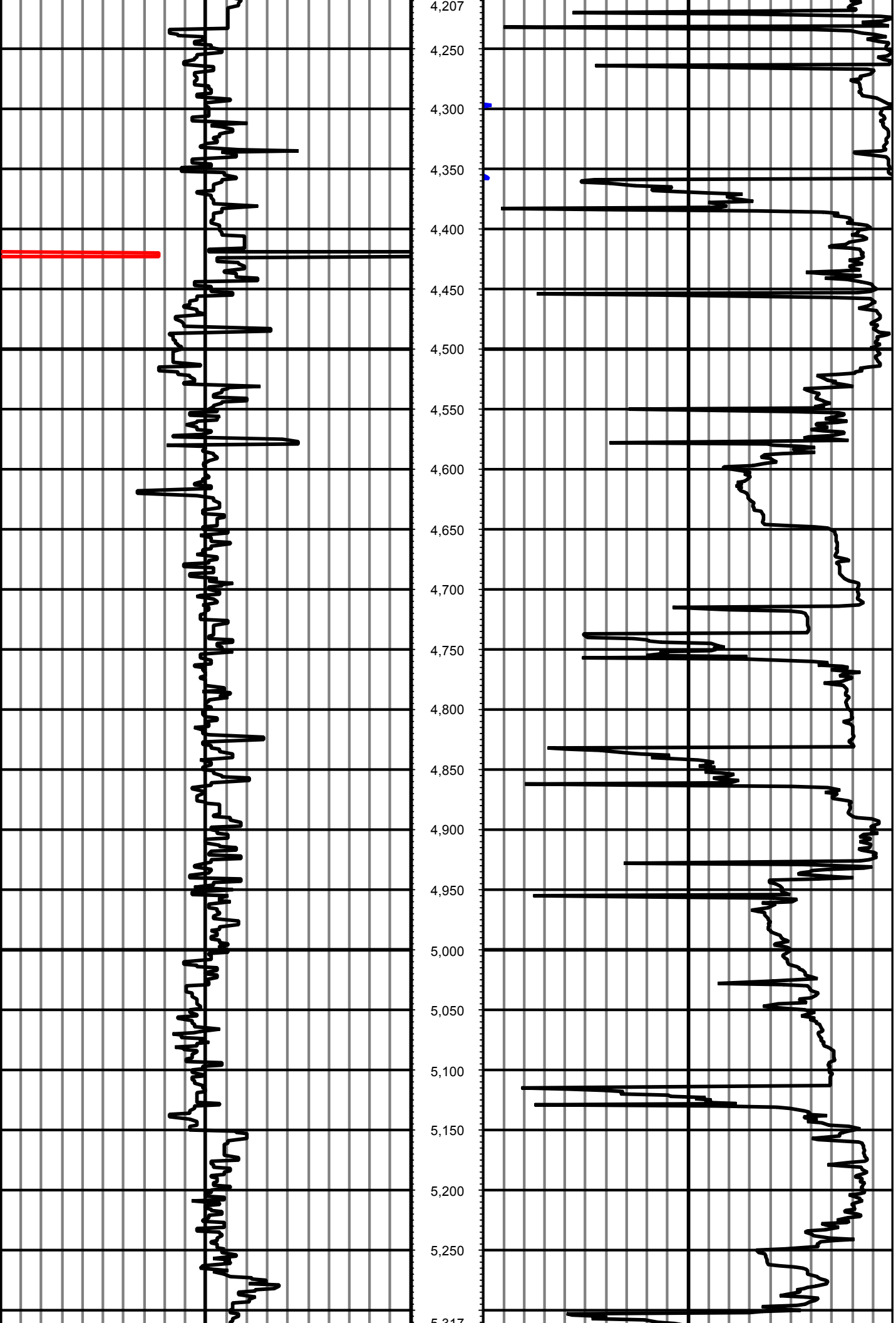
All interpretations are opinions based on inferences from electrical or other measurements and we cannot and do not guarantee the accuracy or correctness of any interpretation, and we shall not except in the case of gross or willful negligence on our part, be liable or responsible for any loss, cost damages or expenses incurred or sustained by anyone resulting from an interpretation made by any of our officers, agents, or employees.

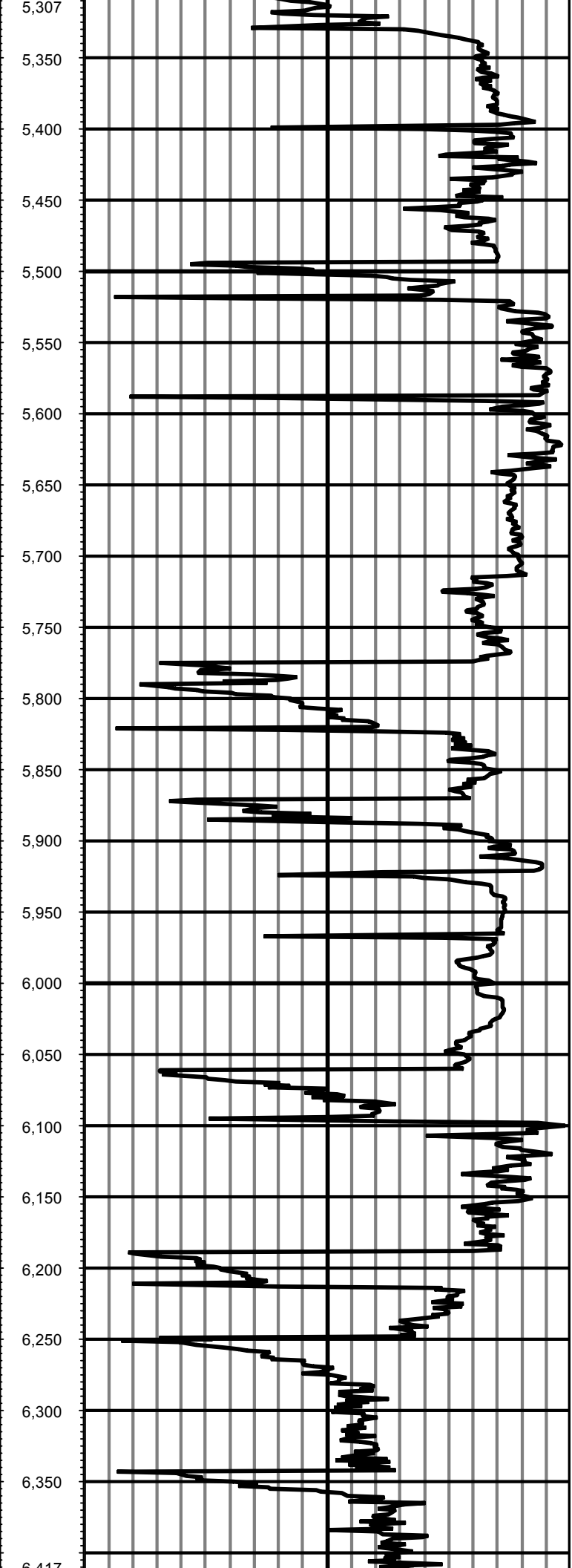
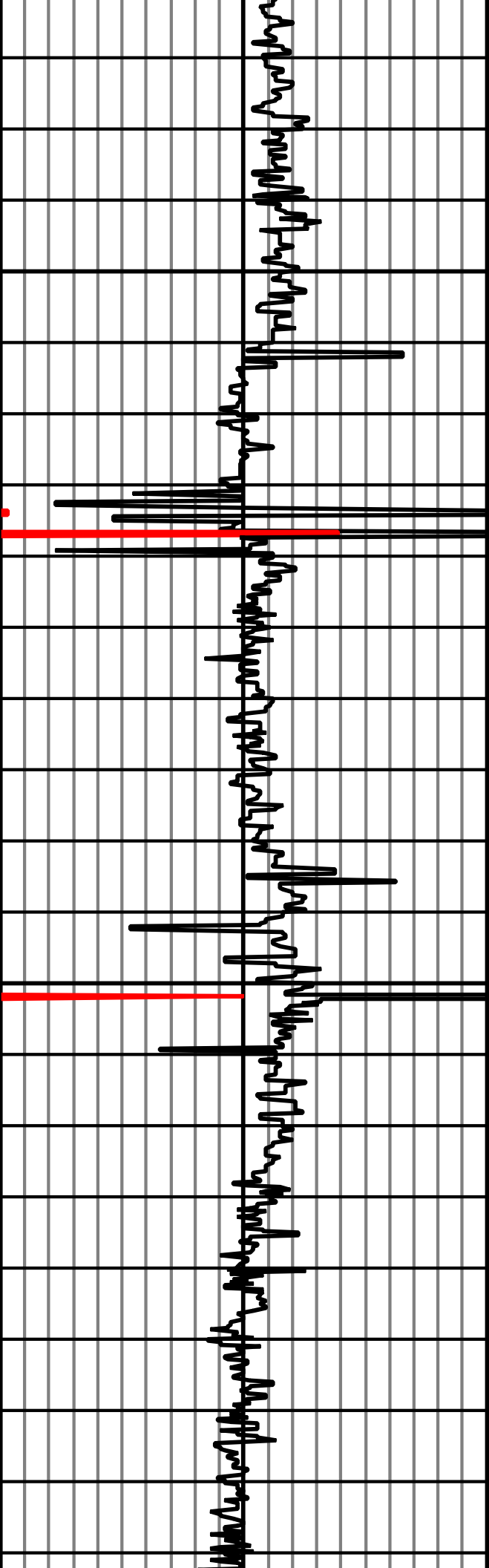
0.00 Counts(mG) 150.00
150.00 2 300.00MD 0.00 ROP(FT/HR) 500.00
FT 500.00 2 1,000.00
1,000.00 3 1,500.00

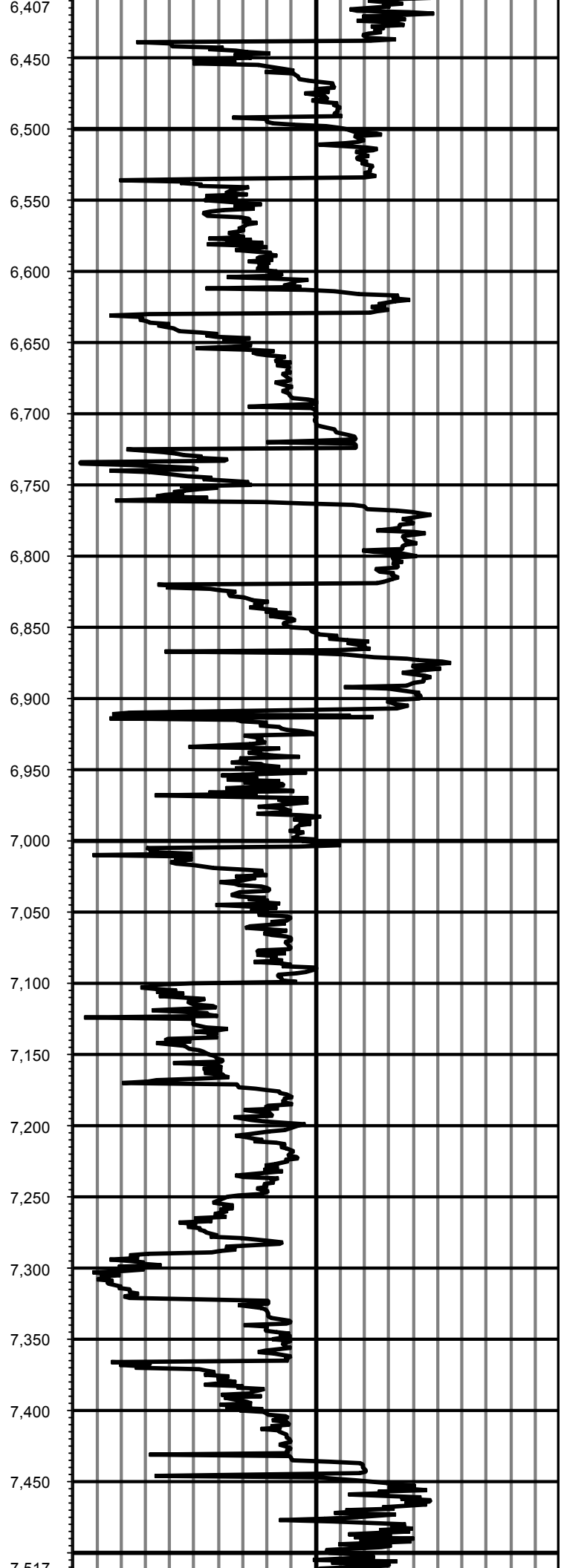
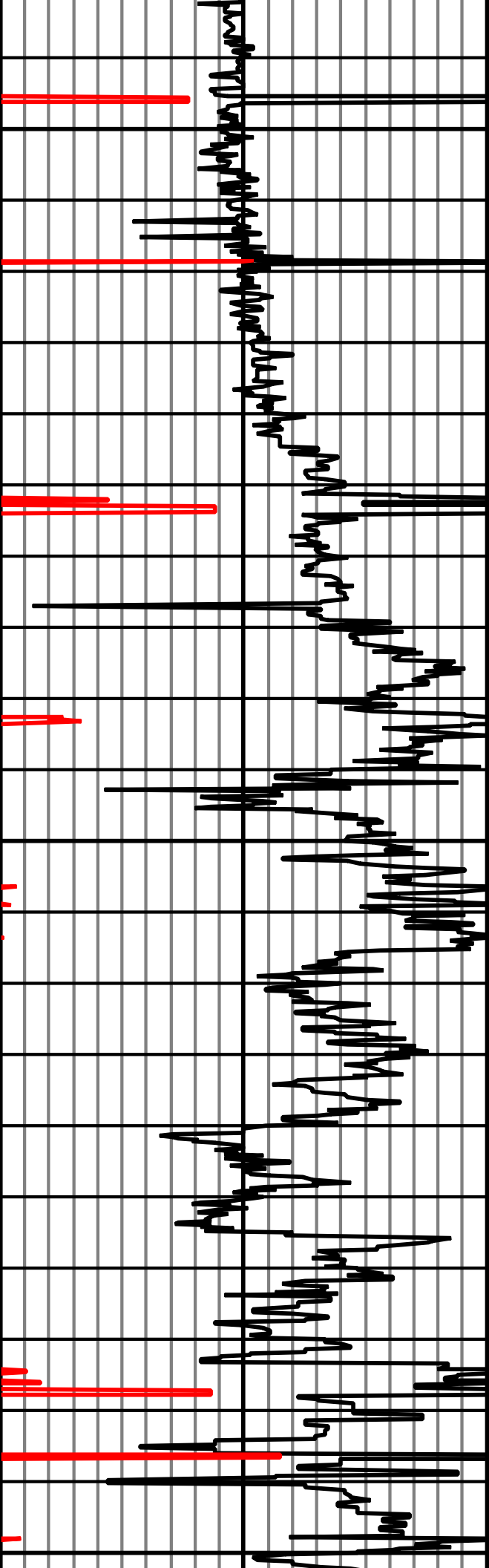


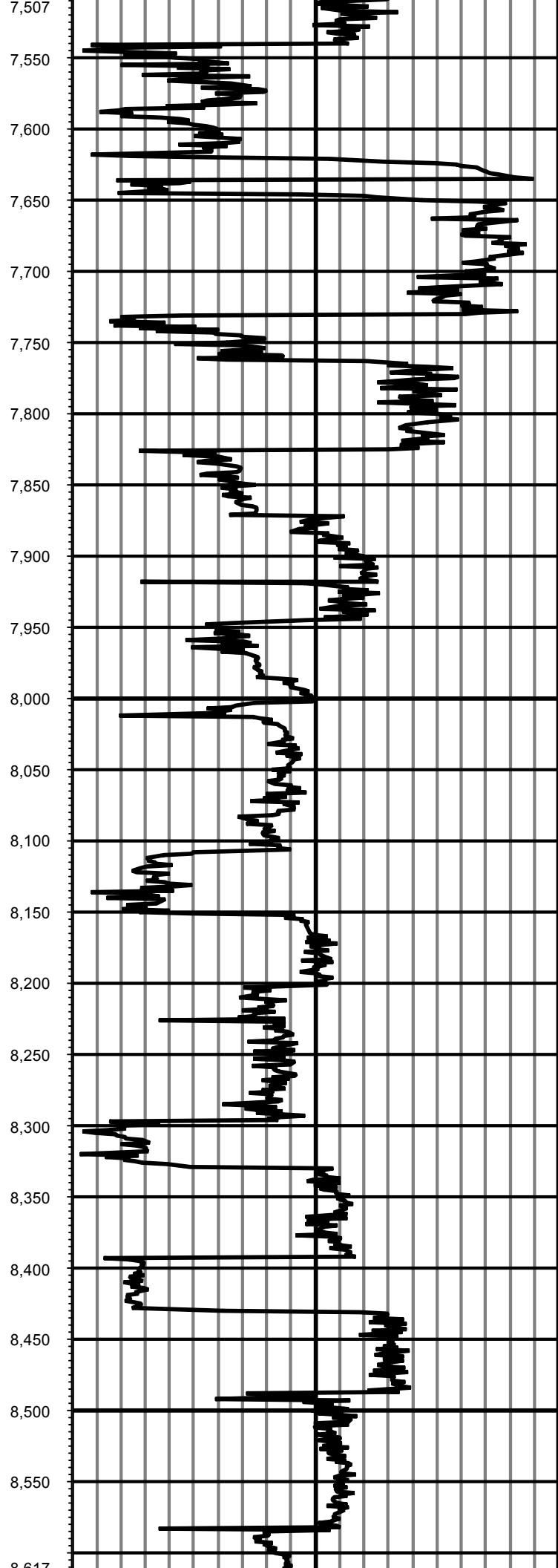
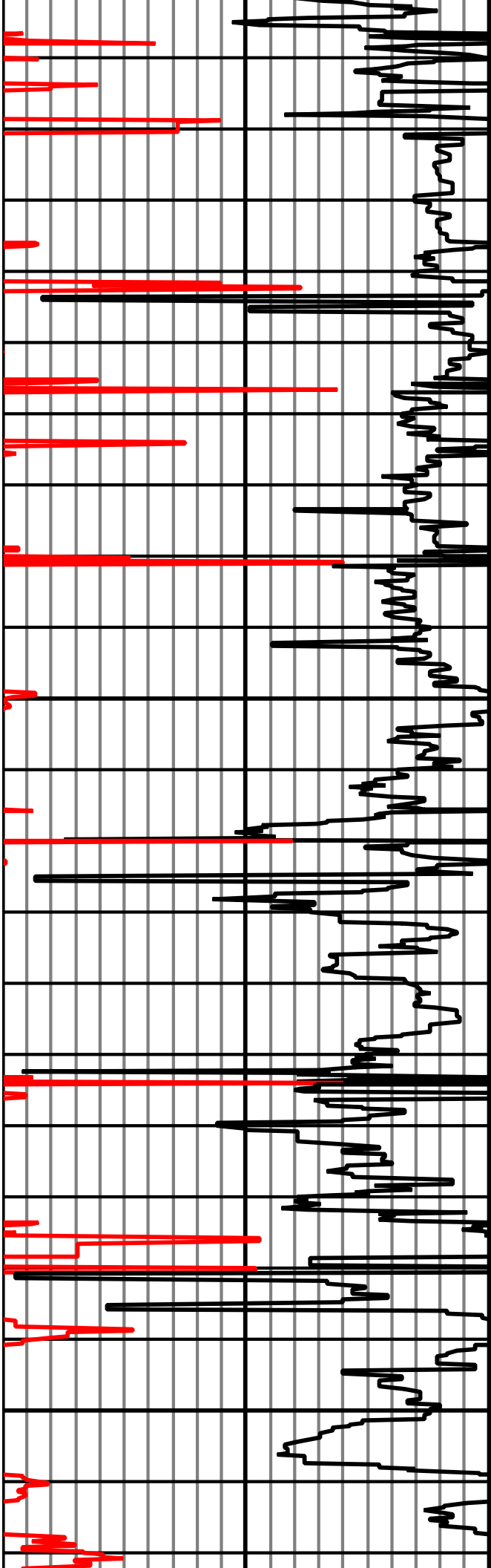


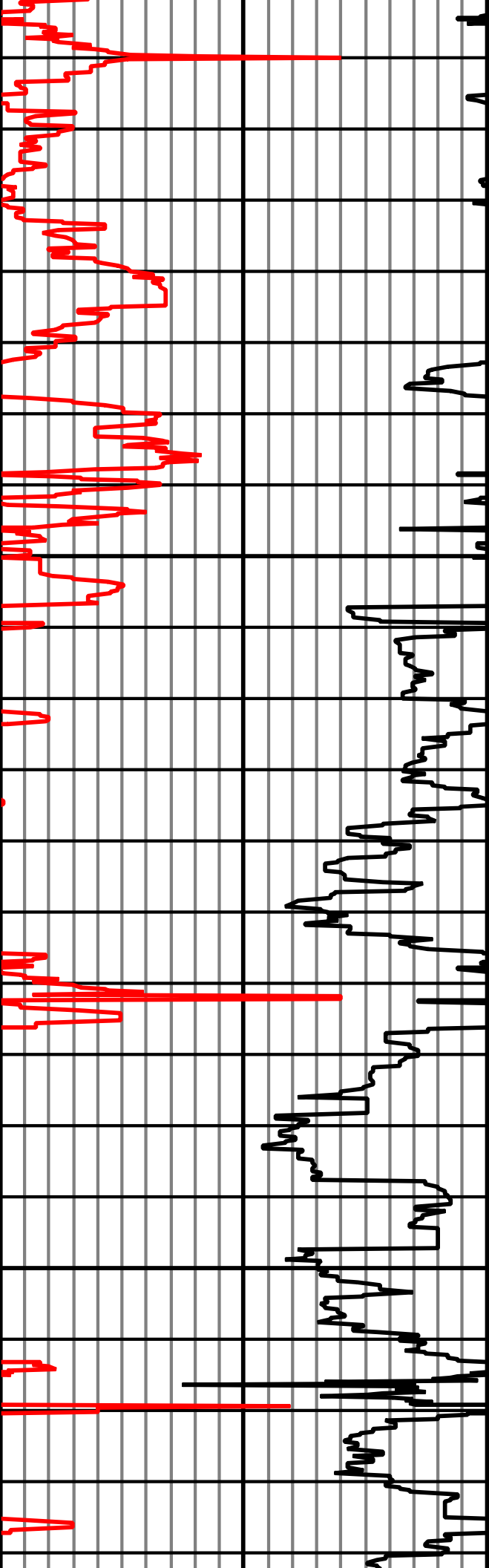












8,607
8,650
8,700
8,750
8,800
8,850
8,900
8,950
9,000
9,050
9,100
9,150
9,200
9,250
9,300
9,350
9,400
9,450
9,500
9,550
9,600
9,650
9,717

