

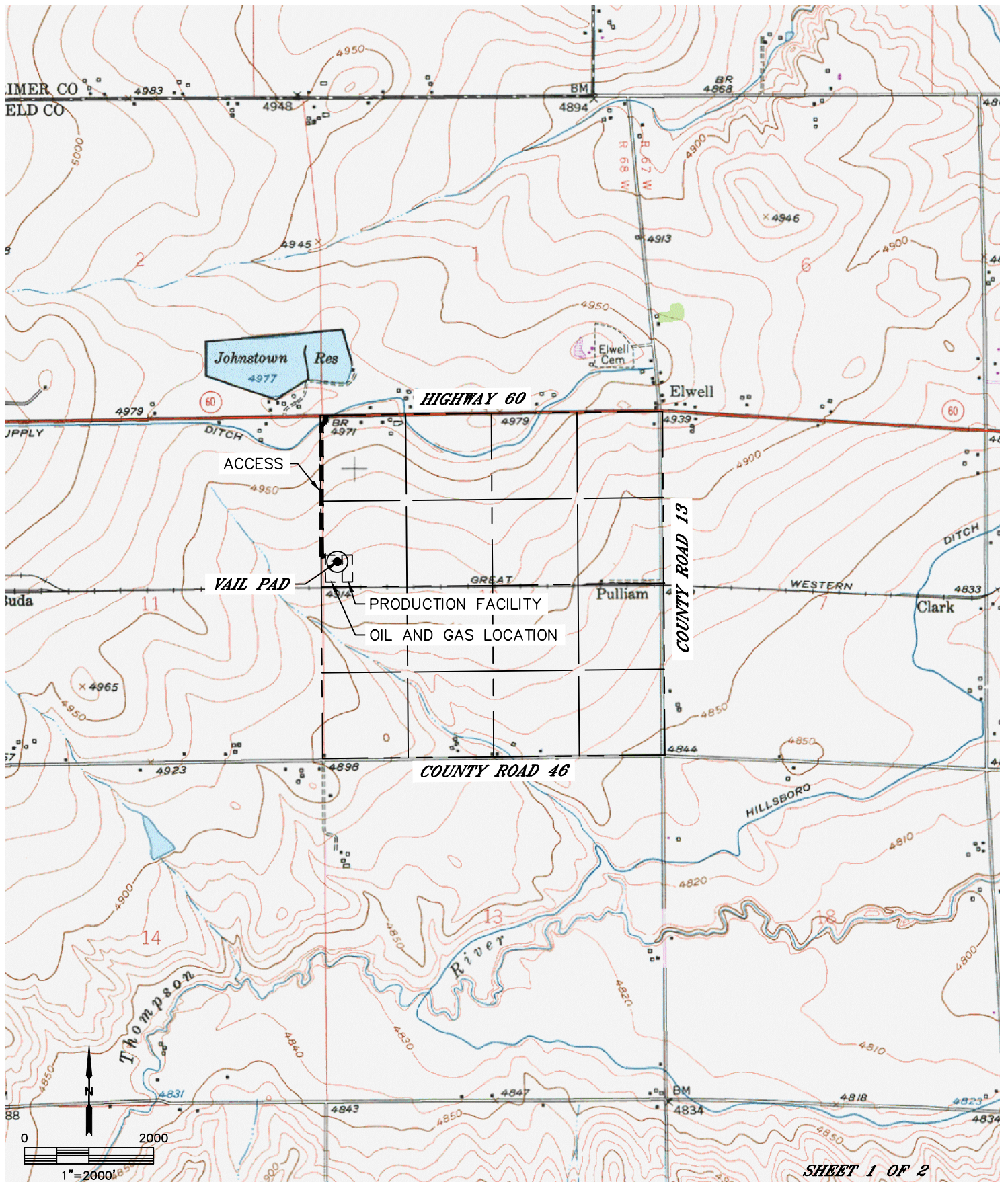


Lat40°, Inc. 6250 W. 10th Street, Unit 2, Greeley, CO 970-515-5294

# ACCESS ROAD MAP

VAIL PAD

SECTION: 12  
TOWNSHIP: 4N  
RANGE: 68W  
6TH. P.M.  
WELD COUNTY, CO



SHEET 1 OF 2

DATE: 1/15/2015  
PROJECT#: 2014184

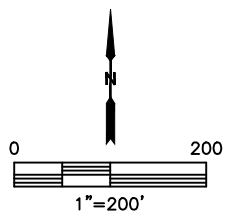
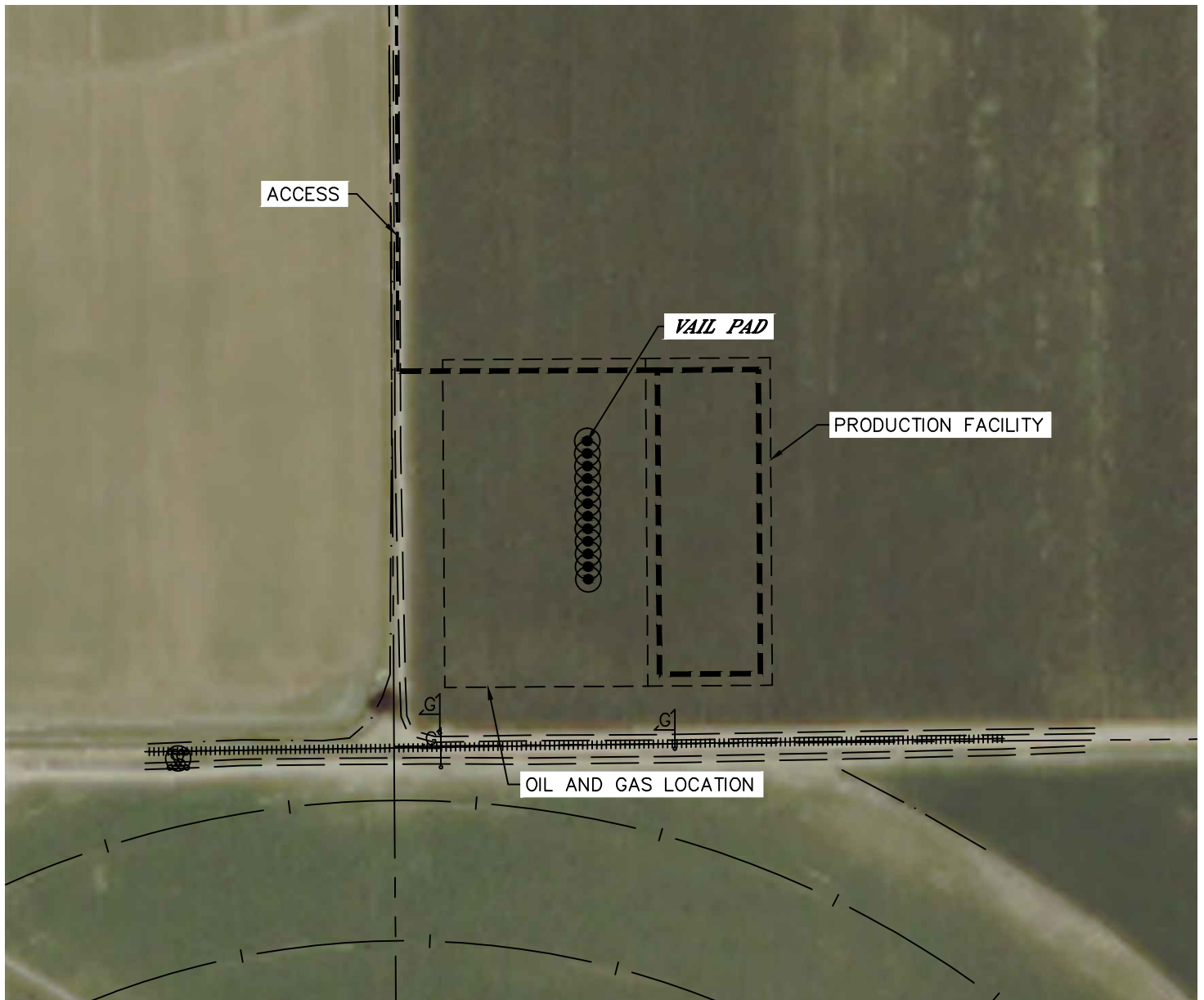


Lat40°, Inc. 6250 W. 10th Street, Unit 2, Greeley, CO 970-515-5294

# ACCESS ROAD MAP

VAIL PAD

SECTION: 12  
TOWNSHIP: 4N  
RANGE: 68W  
6TH. P.M.  
WELD COUNTY, CO



*SHEET 2 OF 2*

DATE: 1/15/2015  
PROJECT#: 2014184