

# Bayswater Exploration & Production, LLC

Well Name: **Hester Farms L-36HN**

Surface Location: Hester Farms Pad Sec.31-7N-66W

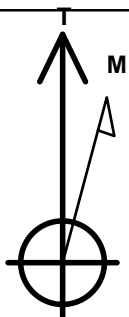
North American Datum 1983 , US State Plane 1983 , Colorado Northern Zone

Ground Elevation: 4913.0

+N/-S	+E/-W	Northing	Easting	Latitude	Longitude	Slot
0.0	0.0	1437774.49	3185849.20	40.533168	-104.831383	
RKB - 25' WELL @ 4938.0ft (RKB - 25')						

## WELLBORE TARGET DETAILS

Name	TVD	+N/-S	+E/-W	Shape
SHL 1754'FNL, 202'FWL, SEC.31	1.0	0.0	0.0	Point
BHL 2470'FNL, 470'FWL, SEC.36	7178.0	-744.9	-4997.3	Point
LPL 2470'FNL, 470'FEL, SEC.36	7213.0	-720.2	-678.0	Point



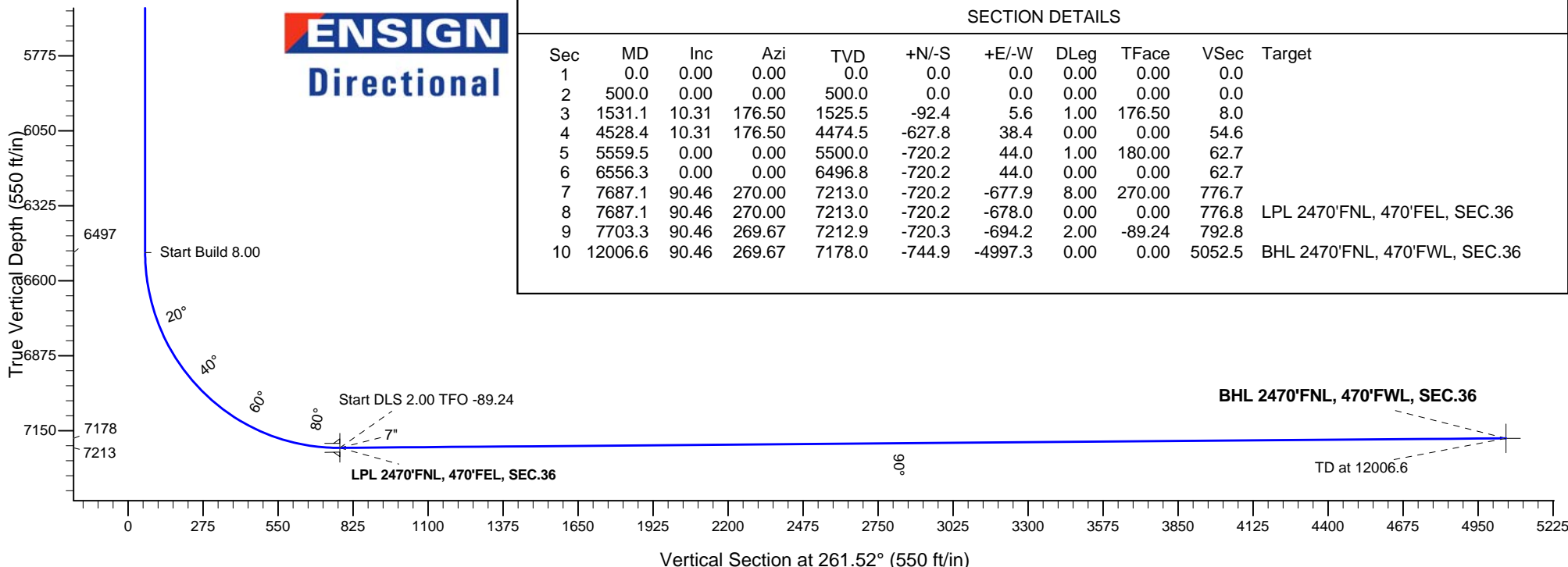
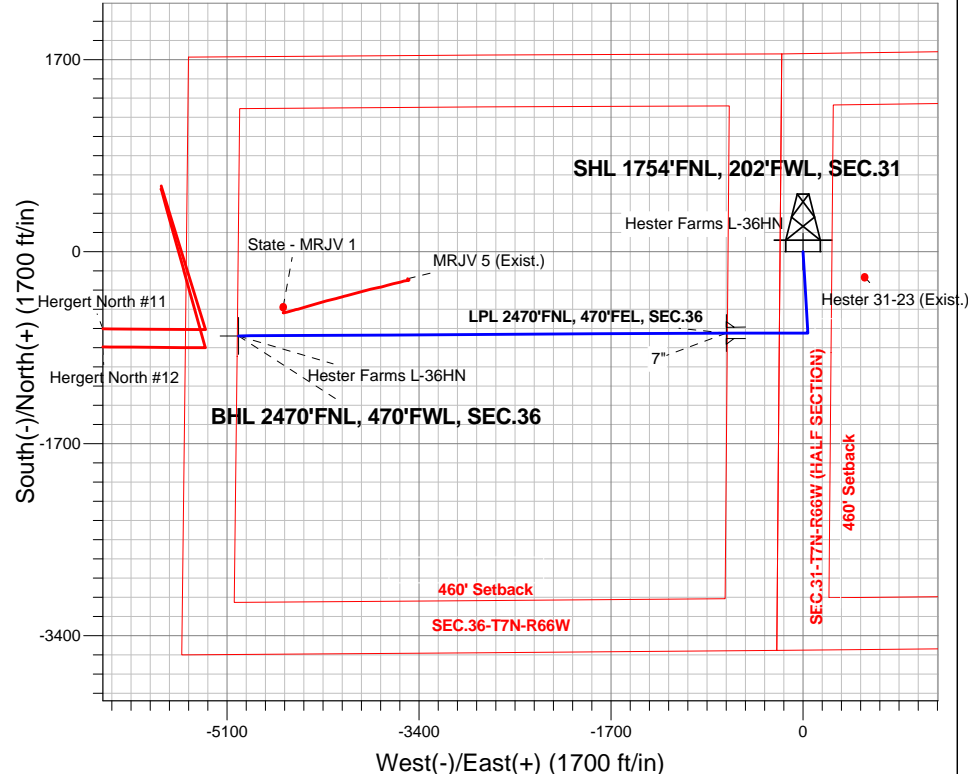
Azimuths to True North  
Magnetic North: 8.38°

Magnetic Field  
Strength: 52779.2nT  
Dip Angle: 67.01°  
Date: 5/20/2015  
Model: IGRF2010

Hester Farms Pad Sec.31-7N-66W  
Hester Farms L-36HN  
Plan #1 (5-06-15)  
8:15, May 20 2015

## ANNOTATIONS

TVD	MD	Annotation
500.0	500.0	KOP - Start Build 1.00
4474.4	4528.4	Start Drop -1.00
6496.8	6556.3	Start Build 8.00
7213.0	7687.1	Start DLS 2.00 TFO -89.24
7212.9	7703.3	Start 4303.3 hold at 7703.3 MD
7178.0	12006.6	TD at 12006.6



## SECTION DETAILS

Sec	MD	Inc	Azi	TVD	+N/-S	+E/-W	DLeg	TFace	VSec	Target
1	0.0	0.00	0.00	0.0	0.0	0.0	0.00	0.00	0.0	
2	500.0	0.00	0.00	500.0	0.0	0.0	0.00	0.00	0.0	
3	1531.1	10.31	176.50	1525.5	-92.4	5.6	1.00	176.50	8.0	
4	4528.4	10.31	176.50	4474.5	-627.8	38.4	0.00	0.00	54.6	
5	5559.5	0.00	0.00	5500.0	-720.2	44.0	1.00	180.00	62.7	
6	6556.3	0.00	0.00	6496.8	-720.2	44.0	0.00	0.00	62.7	
7	7687.1	90.46	270.00	7213.0	-720.2	-677.9	8.00	270.00	776.7	
8	7687.1	90.46	270.00	7213.0	-720.2	-678.0	0.00	0.00	776.8	LPL 2470'FNL, 470'FEL, SEC.36
9	7703.3	90.46	269.67	7212.9	-720.3	-694.2	2.00	-89.24	792.8	
10	12006.6	90.46	269.67	7178.0	-744.9	-4997.3	0.00	0.00	5052.5	BHL 2470'FNL, 470'FWL, SEC.36



# **Bayswater Exploration & Production, LLC**

**SEC.31-T7N-R66W**

**Hester Farms Pad Sec.31-7N-66W**

**Hester Farms L-36HN**

**Wellbore #1**

**Plan: Plan #1 (5-06-15)**

## **Standard Planning Report**

**20 May, 2015**



**BAYSWATER**  
**EXPLORATION & PRODUCTION, LLC**

<b>Database:</b>	Landmark	<b>Local Co-ordinate Reference:</b>	Well Hester Farms L-36HN
<b>Company:</b>	Bayswater Exploration & Production, LLC	<b>TVD Reference:</b>	WELL @ 4938.0ft (RKB - 25')
<b>Project:</b>	SEC.31-T7N-R66W	<b>MD Reference:</b>	WELL @ 4938.0ft (RKB - 25')
<b>Site:</b>	Hester Farms Pad Sec.31-7N-66W	<b>North Reference:</b>	True
<b>Well:</b>	Hester Farms L-36HN	<b>Survey Calculation Method:</b>	Minimum Curvature
<b>Wellbore:</b>	Wellbore #1		
<b>Design:</b>	Plan #1 (5-06-15)		

<b>Project</b>	SEC.31-T7N-R66W, Weld County, Colorado		
<b>Map System:</b>	US State Plane 1983	<b>System Datum:</b>	Mean Sea Level
<b>Geo Datum:</b>	North American Datum 1983		Using Well Reference Point
<b>Map Zone:</b>	Colorado Northern Zone		Using geodetic scale factor

Site		Hester Farms Pad Sec.31-7N-66W				
Site Position:		Northing:	1,437,939.53 ft	Latitude:	40.533621	
From:	Lat/Long	Easting:	3,185,849.35 ft	Longitude:	-104.831378	
Position Uncertainty:		0.0 ft	Slot Radius:	"	Grid Convergence:	0.43 °

Well	Hester Farms L-36HN					
Well Position	+N-S	-165.0 ft	Northing:	1,437,774.49 ft	Latitude:	40.533168
	+E-W	-1.4 ft	Easting:	3,185,849.20 ft	Longitude:	-104.831383
Position Uncertainty		0.0 ft	Wellhead Elevation:	ft	Ground Level:	4,913.0 ft

<b>Wellbore</b>	Wellbore #1				
<b>Magnetics</b>	<b>Model Name</b>	<b>Sample Date</b>	<b>Declination (°)</b>	<b>Dip Angle (°)</b>	<b>Field Strength (nT)</b>
	IGRF2010	5/20/2015	8.38	67.01	52,779

<b>Design</b>	Plan #1 (5-06-15)			
<b>Audit Notes:</b>				
<b>Version:</b>	<b>Phase:</b>	PROTOTYPE	<b>Tie On Depth:</b>	0.0
<b>Vertical Section:</b>	<b>Depth From (TVD) (ft)</b>	<b>+N/-S (ft)</b>	<b>+E/-W (ft)</b>	<b>Direction (°)</b>
	0.0	0.0	0.0	261.52

<b>Plan Sections</b>										
Measured Depth (ft)	Inclination (°)	Azimuth (°)	Vertical Depth (ft)	+N/-S (ft)	+E/-W (ft)	Dogleg Rate (°/100ft)	Build Rate (°/100ft)	Turn Rate (°/100ft)	TFO (°)	Target
0.0	0.00	0.00	0.0	0.0	0.0	0.00	0.00	0.00	0.00	
500.0	0.00	0.00	500.0	0.0	0.0	0.00	0.00	0.00	0.00	
1,531.1	10.31	176.50	1,525.5	-92.4	5.6	1.00	1.00	0.00	176.50	
4,528.4	10.31	176.50	4,474.5	-627.8	38.4	0.00	0.00	0.00	0.00	
5,559.5	0.00	0.00	5,500.0	-720.2	44.0	1.00	-1.00	0.00	180.00	
6,556.3	0.00	0.00	6,496.8	-720.2	44.0	0.00	0.00	0.00	0.00	
7,687.1	90.46	270.00	7,213.0	-720.2	-677.9	8.00	8.00	0.00	270.00	
7,687.1	90.46	270.00	7,213.0	-720.2	-678.0	0.00	0.00	0.00	0.00	LPL 2470'FNL, 470
7,703.3	90.46	269.67	7,212.9	-720.3	-694.2	2.00	0.03	-2.00	-89.24	
12,006.6	90.46	269.67	7,178.0	-744.9	-4,997.3	0.00	0.00	0.00	0.00	BHL 2470'FNL, 470

<b>Database:</b>	Landmark	<b>Local Co-ordinate Reference:</b>	Well Hester Farms L-36HN
<b>Company:</b>	Bayswater Exploration & Production, LLC	<b>TVD Reference:</b>	WELL @ 4938.0ft (RKB - 25')
<b>Project:</b>	SEC.31-T7N-R66W	<b>MD Reference:</b>	WELL @ 4938.0ft (RKB - 25')
<b>Site:</b>	Hester Farms Pad Sec.31-7N-66W	<b>North Reference:</b>	True
<b>Well:</b>	Hester Farms L-36HN	<b>Survey Calculation Method:</b>	Minimum Curvature
<b>Wellbore:</b>	Wellbore #1		
<b>Design:</b>	Plan #1 (5-06-15)		

Planned Survey									
Measured Depth (ft)	Inclination (°)	Azimuth (°)	Vertical Depth (ft)	+N/-S (ft)	+E/-W (ft)	Vertical Section (ft)	Dogleg Rate (°/100ft)	Build Rate (°/100ft)	Turn Rate (°/100ft)
0.0	0.00	0.00	0.0	0.0	0.0	0.0	0.00	0.00	0.00
100.0	0.00	0.00	100.0	0.0	0.0	0.0	0.00	0.00	0.00
200.0	0.00	0.00	200.0	0.0	0.0	0.0	0.00	0.00	0.00
300.0	0.00	0.00	300.0	0.0	0.0	0.0	0.00	0.00	0.00
400.0	0.00	0.00	400.0	0.0	0.0	0.0	0.00	0.00	0.00
500.0	0.00	0.00	500.0	0.0	0.0	0.0	0.00	0.00	0.00
KOP - Start Build 1.00									
600.0	1.00	176.50	600.0	-0.9	0.1	0.1	1.00	1.00	0.00
700.0	2.00	176.50	700.0	-3.5	0.2	0.3	1.00	1.00	0.00
800.0	3.00	176.50	799.9	-7.8	0.5	0.7	1.00	1.00	0.00
900.0	4.00	176.50	899.7	-13.9	0.9	1.2	1.00	1.00	0.00
1,000.0	5.00	176.50	999.4	-21.8	1.3	1.9	1.00	1.00	0.00
1,100.0	6.00	176.50	1,098.9	-31.3	1.9	2.7	1.00	1.00	0.00
1,200.0	7.00	176.50	1,198.3	-42.6	2.6	3.7	1.00	1.00	0.00
1,300.0	8.00	176.50	1,297.4	-55.7	3.4	4.8	1.00	1.00	0.00
1,400.0	9.00	176.50	1,396.3	-70.4	4.3	6.1	1.00	1.00	0.00
1,500.0	10.00	176.50	1,494.9	-86.9	5.3	7.6	1.00	1.00	0.00
1,531.1	10.31	176.50	1,525.5	-92.4	5.6	8.0	1.00	1.00	0.00
1,600.0	10.31	176.50	1,593.3	-104.7	6.4	9.1	0.00	0.00	0.00
1,700.0	10.31	176.50	1,691.7	-122.5	7.5	10.7	0.00	0.00	0.00
1,800.0	10.31	176.50	1,790.1	-140.4	8.6	12.2	0.00	0.00	0.00
1,900.0	10.31	176.50	1,888.5	-158.3	9.7	13.8	0.00	0.00	0.00
2,000.0	10.31	176.50	1,986.9	-176.1	10.8	15.3	0.00	0.00	0.00
2,100.0	10.31	176.50	2,085.3	-194.0	11.9	16.9	0.00	0.00	0.00
2,200.0	10.31	176.50	2,183.6	-211.9	12.9	18.4	0.00	0.00	0.00
2,300.0	10.31	176.50	2,282.0	-229.7	14.0	20.0	0.00	0.00	0.00
2,400.0	10.31	176.50	2,380.4	-247.6	15.1	21.5	0.00	0.00	0.00
2,500.0	10.31	176.50	2,478.8	-265.5	16.2	23.1	0.00	0.00	0.00
2,600.0	10.31	176.50	2,577.2	-283.3	17.3	24.6	0.00	0.00	0.00
2,700.0	10.31	176.50	2,675.6	-301.2	18.4	26.2	0.00	0.00	0.00
2,800.0	10.31	176.50	2,774.0	-319.1	19.5	27.8	0.00	0.00	0.00
2,900.0	10.31	176.50	2,872.3	-336.9	20.6	29.3	0.00	0.00	0.00
3,000.0	10.31	176.50	2,970.7	-354.8	21.7	30.9	0.00	0.00	0.00
3,100.0	10.31	176.50	3,069.1	-372.6	22.8	32.4	0.00	0.00	0.00
3,200.0	10.31	176.50	3,167.5	-390.5	23.9	34.0	0.00	0.00	0.00
3,300.0	10.31	176.50	3,265.9	-408.4	24.9	35.5	0.00	0.00	0.00
3,400.0	10.31	176.50	3,364.3	-426.2	26.0	37.1	0.00	0.00	0.00
3,500.0	10.31	176.50	3,462.6	-444.1	27.1	38.6	0.00	0.00	0.00
3,600.0	10.31	176.50	3,561.0	-462.0	28.2	40.2	0.00	0.00	0.00
3,700.0	10.31	176.50	3,659.4	-479.8	29.3	41.7	0.00	0.00	0.00
3,800.0	10.31	176.50	3,757.8	-497.7	30.4	43.3	0.00	0.00	0.00
3,900.0	10.31	176.50	3,856.2	-515.6	31.5	44.9	0.00	0.00	0.00
4,000.0	10.31	176.50	3,954.6	-533.4	32.6	46.4	0.00	0.00	0.00
4,100.0	10.31	176.50	4,053.0	-551.3	33.7	48.0	0.00	0.00	0.00
4,200.0	10.31	176.50	4,151.3	-569.2	34.8	49.5	0.00	0.00	0.00
4,300.0	10.31	176.50	4,249.7	-587.0	35.9	51.1	0.00	0.00	0.00
4,400.0	10.31	176.50	4,348.1	-604.9	37.0	52.6	0.00	0.00	0.00
4,500.0	10.31	176.50	4,446.5	-622.8	38.0	54.2	0.00	0.00	0.00
4,528.4	10.31	176.50	4,474.4	-627.8	38.4	54.6	0.00	0.00	0.00
Start Drop -1.00									
4,600.0	9.60	176.50	4,545.0	-640.2	39.1	55.7	1.00	-1.00	0.00
4,700.0	8.60	176.50	4,643.7	-656.0	40.1	57.1	1.00	-1.00	0.00
4,800.0	7.60	176.50	4,742.7	-670.0	40.9	58.3	1.00	-1.00	0.00
4,900.0	6.60	176.50	4,841.9	-682.4	41.7	59.4	1.00	-1.00	0.00

<b>Database:</b>	Landmark	<b>Local Co-ordinate Reference:</b>	Well Hester Farms L-36HN
<b>Company:</b>	Bayswater Exploration & Production, LLC	<b>TVD Reference:</b>	WELL @ 4938.0ft (RKB - 25')
<b>Project:</b>	SEC.31-T7N-R66W	<b>MD Reference:</b>	WELL @ 4938.0ft (RKB - 25')
<b>Site:</b>	Hester Farms Pad Sec.31-7N-66W	<b>North Reference:</b>	True
<b>Well:</b>	Hester Farms L-36HN	<b>Survey Calculation Method:</b>	Minimum Curvature
<b>Wellbore:</b>	Wellbore #1		
<b>Design:</b>	Plan #1 (5-06-15)		

Planned Survey									
Measured Depth (ft)	Inclination (°)	Azimuth (°)	Vertical Depth (ft)	+N/-S (ft)	+E/-W (ft)	Vertical Section (ft)	Dogleg Rate (°/100ft)	Build Rate (°/100ft)	Turn Rate (°/100ft)
5,000.0	5.60	176.50	4,941.4	-693.0	42.3	60.3	1.00	-1.00	0.00
5,100.0	4.60	176.50	5,041.0	-701.8	42.9	61.1	1.00	-1.00	0.00
5,200.0	3.60	176.50	5,140.7	-708.9	43.3	61.7	1.00	-1.00	0.00
5,300.0	2.60	176.50	5,240.6	-714.3	43.6	62.1	1.00	-1.00	0.00
5,400.0	1.60	176.50	5,340.5	-718.0	43.9	62.5	1.00	-1.00	0.00
5,500.0	0.60	176.50	5,440.5	-719.9	44.0	62.6	1.00	-1.00	0.00
5,559.5	0.00	0.00	5,500.0	-720.2	44.0	62.7	1.00	-1.00	0.00
5,600.0	0.00	0.00	5,540.5	-720.2	44.0	62.7	0.00	0.00	0.00
5,700.0	0.00	0.00	5,640.5	-720.2	44.0	62.7	0.00	0.00	0.00
5,800.0	0.00	0.00	5,740.5	-720.2	44.0	62.7	0.00	0.00	0.00
5,900.0	0.00	0.00	5,840.5	-720.2	44.0	62.7	0.00	0.00	0.00
6,000.0	0.00	0.00	5,940.5	-720.2	44.0	62.7	0.00	0.00	0.00
6,100.0	0.00	0.00	6,040.5	-720.2	44.0	62.7	0.00	0.00	0.00
6,200.0	0.00	0.00	6,140.5	-720.2	44.0	62.7	0.00	0.00	0.00
6,300.0	0.00	0.00	6,240.5	-720.2	44.0	62.7	0.00	0.00	0.00
6,400.0	0.00	0.00	6,340.5	-720.2	44.0	62.7	0.00	0.00	0.00
6,500.0	0.00	0.00	6,440.5	-720.2	44.0	62.7	0.00	0.00	0.00
6,556.3	0.00	0.00	6,496.8	-720.2	44.0	62.7	0.00	0.00	0.00
Start Build 8.00									
6,600.0	3.49	270.00	6,540.5	-720.2	42.7	64.0	7.99	7.99	0.00
6,700.0	11.49	270.00	6,639.5	-720.2	29.6	76.9	8.00	8.00	0.00
6,800.0	19.49	270.00	6,735.8	-720.2	3.0	103.3	8.00	8.00	0.00
6,900.0	27.49	270.00	6,827.4	-720.2	-36.9	142.7	8.00	8.00	0.00
7,000.0	35.49	270.00	6,912.6	-720.2	-89.1	194.3	8.00	8.00	0.00
7,100.0	43.49	270.00	6,989.8	-720.2	-152.6	257.1	8.00	8.00	0.00
7,200.0	51.49	270.00	7,057.3	-720.2	-226.3	330.0	8.00	8.00	0.00
7,300.0	59.49	270.00	7,113.9	-720.2	-308.6	411.4	8.00	8.00	0.00
7,400.0	67.49	270.00	7,158.5	-720.2	-398.0	499.9	8.00	8.00	0.00
7,500.0	75.49	270.00	7,190.2	-720.2	-492.8	593.6	8.00	8.00	0.00
7,600.0	83.49	270.00	7,208.4	-720.2	-591.0	690.8	8.00	8.00	0.00
7,687.1	90.46	270.00	7,213.0	-720.2	-678.0	776.7	8.00	8.00	0.00
Start DLS 2.00 TFO -89.24 - 7"									
7,700.0	90.46	269.74	7,212.9	-720.3	-690.9	789.5	1.99	0.03	-1.99
7,703.3	90.46	269.67	7,212.9	-720.3	-694.2	792.8	2.00	0.03	-2.00
Start 4303.3 hold at 7703.3 MD									
7,800.0	90.46	269.67	7,212.1	-720.8	-790.8	888.5	0.00	0.00	0.00
7,900.0	90.46	269.67	7,211.3	-721.4	-890.8	987.5	0.00	0.00	0.00
8,000.0	90.46	269.67	7,210.5	-722.0	-990.8	1,086.5	0.00	0.00	0.00
8,100.0	90.46	269.67	7,209.7	-722.6	-1,090.8	1,185.4	0.00	0.00	0.00
8,200.0	90.46	269.67	7,208.8	-723.1	-1,190.8	1,284.4	0.00	0.00	0.00
8,300.0	90.46	269.67	7,208.0	-723.7	-1,290.8	1,383.4	0.00	0.00	0.00
8,400.0	90.46	269.67	7,207.2	-724.3	-1,390.8	1,482.4	0.00	0.00	0.00
8,500.0	90.46	269.67	7,206.4	-724.8	-1,490.8	1,581.4	0.00	0.00	0.00
8,600.0	90.46	269.67	7,205.6	-725.4	-1,590.8	1,680.4	0.00	0.00	0.00
8,700.0	90.46	269.67	7,204.8	-726.0	-1,690.8	1,779.4	0.00	0.00	0.00
8,800.0	90.46	269.67	7,204.0	-726.6	-1,790.8	1,878.3	0.00	0.00	0.00
8,900.0	90.46	269.67	7,203.2	-727.1	-1,890.8	1,977.3	0.00	0.00	0.00
9,000.0	90.46	269.67	7,202.4	-727.7	-1,990.8	2,076.3	0.00	0.00	0.00
9,100.0	90.46	269.67	7,201.6	-728.3	-2,090.8	2,175.3	0.00	0.00	0.00
9,200.0	90.46	269.67	7,200.7	-728.8	-2,190.8	2,274.3	0.00	0.00	0.00
9,300.0	90.46	269.67	7,199.9	-729.4	-2,290.8	2,373.3	0.00	0.00	0.00
9,400.0	90.46	269.67	7,199.1	-730.0	-2,390.8	2,472.3	0.00	0.00	0.00
9,500.0	90.46	269.67	7,198.3	-730.6	-2,490.8	2,571.3	0.00	0.00	0.00

<b>Database:</b>	Landmark	<b>Local Co-ordinate Reference:</b>	Well Hester Farms L-36HN
<b>Company:</b>	Bayswater Exploration & Production, LLC	<b>TVD Reference:</b>	WELL @ 4938.0ft (RKB - 25')
<b>Project:</b>	SEC.31-T7N-R66W	<b>MD Reference:</b>	WELL @ 4938.0ft (RKB - 25')
<b>Site:</b>	Hester Farms Pad Sec.31-7N-66W	<b>North Reference:</b>	True
<b>Well:</b>	Hester Farms L-36HN	<b>Survey Calculation Method:</b>	Minimum Curvature
<b>Wellbore:</b>	Wellbore #1		
<b>Design:</b>	Plan #1 (5-06-15)		

Planned Survey										
Measured Depth (ft)	Inclination (°)	Azimuth (°)	Vertical Depth (ft)	+N/-S (ft)	+E/-W (ft)	Vertical Section (ft)	Dogleg Rate (°/100ft)	Build Rate (°/100ft)	Turn Rate (°/100ft)	
9,600.0	90.46	269.67	7,197.5	-731.1	-2,590.8	2,670.2	0.00	0.00	0.00	
9,700.0	90.46	269.67	7,196.7	-731.7	-2,690.8	2,769.2	0.00	0.00	0.00	
9,800.0	90.46	269.67	7,195.9	-732.3	-2,790.8	2,868.2	0.00	0.00	0.00	
9,900.0	90.46	269.67	7,195.1	-732.8	-2,890.7	2,967.2	0.00	0.00	0.00	
10,000.0	90.46	269.67	7,194.3	-733.4	-2,990.7	3,066.2	0.00	0.00	0.00	
10,100.0	90.46	269.67	7,193.4	-734.0	-3,090.7	3,165.2	0.00	0.00	0.00	
10,200.0	90.46	269.67	7,192.6	-734.6	-3,190.7	3,264.2	0.00	0.00	0.00	
10,300.0	90.46	269.67	7,191.8	-735.1	-3,290.7	3,363.1	0.00	0.00	0.00	
10,400.0	90.46	269.67	7,191.0	-735.7	-3,390.7	3,462.1	0.00	0.00	0.00	
10,500.0	90.46	269.67	7,190.2	-736.3	-3,490.7	3,561.1	0.00	0.00	0.00	
10,600.0	90.46	269.67	7,189.4	-736.8	-3,590.7	3,660.1	0.00	0.00	0.00	
10,700.0	90.46	269.67	7,188.6	-737.4	-3,690.7	3,759.1	0.00	0.00	0.00	
10,800.0	90.46	269.67	7,187.8	-738.0	-3,790.7	3,858.1	0.00	0.00	0.00	
10,900.0	90.46	269.67	7,187.0	-738.6	-3,890.7	3,957.1	0.00	0.00	0.00	
11,000.0	90.46	269.67	7,186.2	-739.1	-3,990.7	4,056.1	0.00	0.00	0.00	
11,100.0	90.46	269.67	7,185.3	-739.7	-4,090.7	4,155.0	0.00	0.00	0.00	
11,200.0	90.46	269.67	7,184.5	-740.3	-4,190.7	4,254.0	0.00	0.00	0.00	
11,300.0	90.46	269.67	7,183.7	-740.8	-4,290.7	4,353.0	0.00	0.00	0.00	
11,400.0	90.46	269.67	7,182.9	-741.4	-4,390.7	4,452.0	0.00	0.00	0.00	
11,500.0	90.46	269.67	7,182.1	-742.0	-4,490.7	4,551.0	0.00	0.00	0.00	
11,600.0	90.46	269.67	7,181.3	-742.6	-4,590.7	4,650.0	0.00	0.00	0.00	
11,700.0	90.46	269.67	7,180.5	-743.1	-4,690.7	4,749.0	0.00	0.00	0.00	
11,800.0	90.46	269.67	7,179.7	-743.7	-4,790.7	4,847.9	0.00	0.00	0.00	
11,900.0	90.46	269.67	7,178.9	-744.3	-4,890.6	4,946.9	0.00	0.00	0.00	
12,000.0	90.46	269.67	7,178.1	-744.8	-4,990.6	5,045.9	0.00	0.00	0.00	
12,006.6	90.46	269.67	7,178.0	-744.9	-4,997.2	5,052.5	0.00	0.00	0.00	
TD at 12006.6										

Targets										
Target Name	Dip Angle (°)	Dip Dir. (°)	TVD (ft)	+N/-S (ft)	+E/-W (ft)	Northing (ft)	Easting (ft)	Latitude	Longitude	
BHL 2470'FNL, 470'F <sup>1</sup> - plan hits target center - Point	0.00	0.00	7,178.0	-744.9	-4,997.3	1,436,991.97	3,180,857.86	40.531122	-104.849360	
LPL 2470'FNL, 470'F <sup>1</sup> - plan hits target center - Point	0.00	0.00	7,213.0	-720.2	-678.0	1,437,049.17	3,185,176.68	40.531191	-104.833822	
SHL 1754'FNL, 202'F <sup>1</sup> - plan hits target center - Point	0.00	0.00	1.0	0.0	0.0	1,437,774.49	3,185,849.20	40.533168	-104.831383	

Casing Points						
Measured Depth (ft)	Vertical Depth (ft)	Name	Casing Diameter (")	Hole Diameter (")		
7,687.1	7,213.0	7"	7	7-1/2		

<b>Database:</b>	Landmark	<b>Local Co-ordinate Reference:</b>	Well Hester Farms L-36HN
<b>Company:</b>	Bayswater Exploration & Production, LLC	<b>TVD Reference:</b>	WELL @ 4938.0ft (RKB - 25')
<b>Project:</b>	SEC.31-T7N-R66W	<b>MD Reference:</b>	WELL @ 4938.0ft (RKB - 25')
<b>Site:</b>	Hester Farms Pad Sec.31-7N-66W	<b>North Reference:</b>	True
<b>Well:</b>	Hester Farms L-36HN	<b>Survey Calculation Method:</b>	Minimum Curvature
<b>Wellbore:</b>	Wellbore #1		
<b>Design:</b>	Plan #1 (5-06-15)		

Plan Annotations				
Measured Depth (ft)	Vertical Depth (ft)	Local Coordinates		Comment
		+N/-S (ft)	+E/-W (ft)	
500.0	500.0	0.0	0.0	KOP - Start Build 1.00
4,528.4	4,474.4	-627.8	38.4	Start Drop -1.00
6,556.3	6,496.8	-720.2	44.0	Start Build 8.00
7,687.1	7,213.0	-720.2	-678.0	Start DLS 2.00 TFO -89.24
7,703.3	7,212.9	-720.3	-694.2	Start 4303.3 hold at 7703.3 MD
12,006.6	7,178.0	-744.9	-4,997.2	TD at 12006.6