

# Bayswater Exploration & Production, LLC

Well Name: **Hester Farms I-36HN**

Surface Location: Hester Farms Pad Sec.31-7N-66W

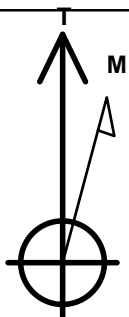
North American Datum 1983 , US State Plane 1983 , Colorado Northern Zone

Ground Elevation: 4914.0

+N/-S	+E/-W	Northing	Easting	Latitude	Longitude	Slot
0.0	0.0	1437819.30	3185849.14	40.533291	-104.831382	
RKB - 25' WELL @ 4939.0ft (RKB - 25')						

## WELLBORE TARGET DETAILS

Name	TVD	+N/-S	+E/-W	Shape
SHL 1709'FNL, 202'FWL, SEC.31	1.0	0.0	0.0	Point
BHL 1870'FNL, 470'FWL, SEC.36	7184.0	-189.7	-4991.0	Point
LPL 1870'FNL, 470'FEL, SEC.36	7219.0	-165.0	-673.3	Point



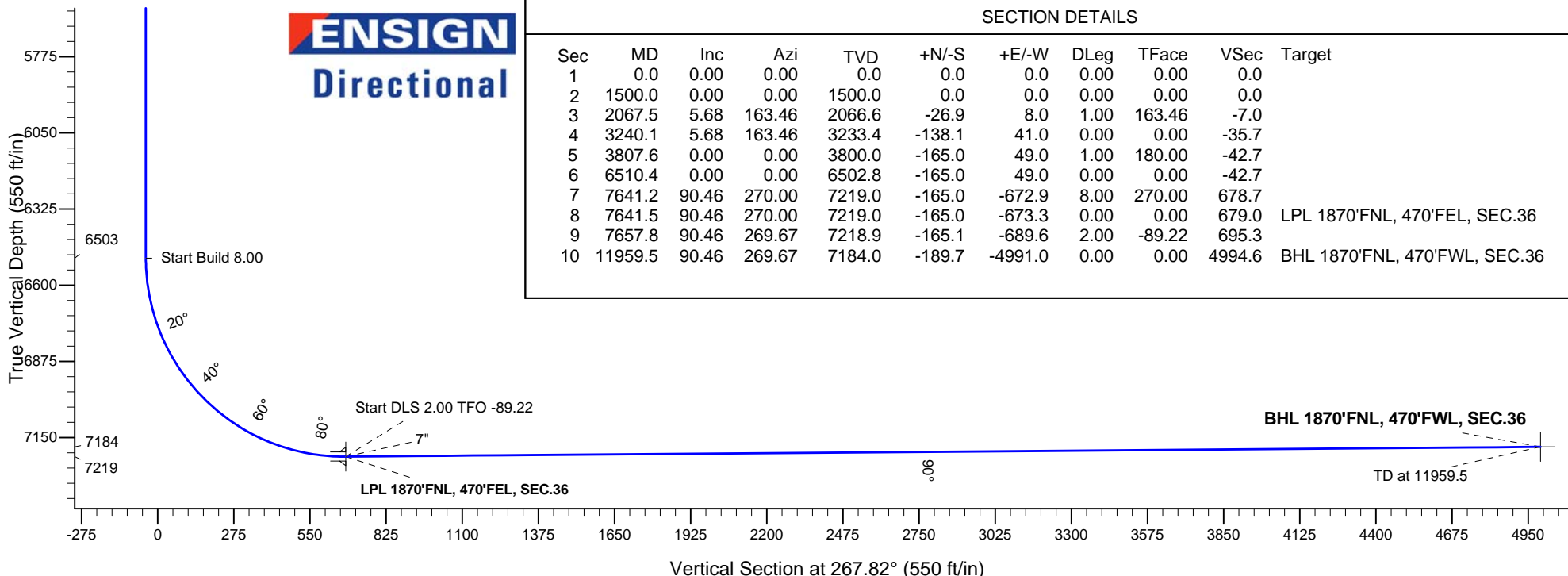
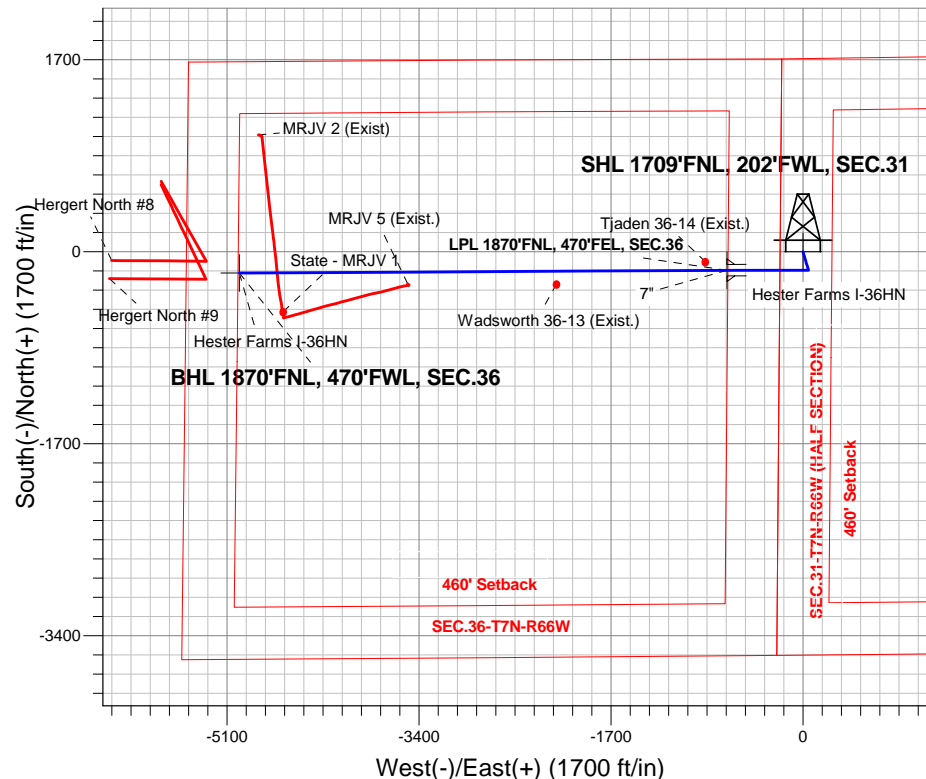
Azimuths to True North  
Magnetic North: 8.38°

Magnetic Field  
Strength: 52779.2snT  
Dip Angle: 67.01°  
Date: 5/20/2015  
Model: IGRF2010

Hester Farms Pad Sec.31-7N-66W  
Hester Farms I-36HN  
Plan #1 (5-06-15)  
5:31, May 20 2015

## ANNOTATIONS

TVD	MD	Annotation
1500.0	1500.0	KOP - Start Build 1.00
3233.4	3240.1	Start Drop -1.00
6502.8	6510.4	Start Build 8.00
7219.0	7641.5	Start DLS 2.00 TFO -89.22
7218.9	7657.8	Start 4301.7 hold at 7657.8 MD
7184.0	11959.5	TD at 11959.5





# **Bayswater Exploration & Production, LLC**

**SEC.31-T7N-R66W**

**Hester Farms Pad Sec.31-7N-66W**

**Hester Farms I-36HN**

**Wellbore #1**

**Plan: Plan #1 (5-06-15)**

## **Standard Planning Report**

**20 May, 2015**



**BAYSWATER**  
**EXPLORATION & PRODUCTION, LLC**

<b>Database:</b>	Landmark	<b>Local Co-ordinate Reference:</b>	Well Hester Farms I-36HN
<b>Company:</b>	Bayswater Exploration & Production, LLC	<b>TVD Reference:</b>	WELL @ 4939.0ft (RKB - 25')
<b>Project:</b>	SEC.31-T7N-R66W	<b>MD Reference:</b>	WELL @ 4939.0ft (RKB - 25')
<b>Site:</b>	Hester Farms Pad Sec.31-7N-66W	<b>North Reference:</b>	True
<b>Well:</b>	Hester Farms I-36HN	<b>Survey Calculation Method:</b>	Minimum Curvature
<b>Wellbore:</b>	Wellbore #1		
<b>Design:</b>	Plan #1 (5-06-15)		

<b>Project</b>	SEC.31-T7N-R66W, Weld County, Colorado		
<b>Map System:</b>	US State Plane 1983	<b>System Datum:</b>	Mean Sea Level
<b>Geo Datum:</b>	North American Datum 1983		Using Well Reference Point
<b>Map Zone:</b>	Colorado Northern Zone		Using geodetic scale factor

Site		Hester Farms Pad Sec.31-7N-66W				
Site Position:		Northing:	1,437,939.53 ft	Latitude:	40.533621	
From:	Lat/Long	Easting:	3,185,849.35 ft	Longitude:	-104.831378	
Position Uncertainty:		0.0 ft	Slot Radius:	"	Grid Convergence:	0.43 °

Well	Hester Farms I-36HN					
Well Position	+N-S	-120.2 ft	Northing:	1,437,819.30 ft	Latitude:	40.533291
	+E-W	-1.1 ft	Easting:	3,185,849.14 ft	Longitude:	-104.831382
Position Uncertainty		0.0 ft	Wellhead Elevation:	ft	Ground Level:	4,914.0 ft

<b>Wellbore</b>	Wellbore #1				
<b>Magnetics</b>	<b>Model Name</b>	<b>Sample Date</b>	<b>Declination (°)</b>	<b>Dip Angle (°)</b>	<b>Field Strength (nT)</b>
	IGRF2010	5/20/2015	8.38	67.01	52,779

<b>Design</b>	Plan #1 (5-06-15)			
<b>Audit Notes:</b>				
<b>Version:</b>	<b>Phase:</b>	PROTOTYPE	<b>Tie On Depth:</b>	0.0
<b>Vertical Section:</b>	<b>Depth From (TVD) (ft)</b>	<b>+N/-S (ft)</b>	<b>+E/-W (ft)</b>	<b>Direction (°)</b>
	0.0	0.0	0.0	267.82

<b>Plan Sections</b>										
Measured Depth (ft)	Inclination (°)	Azimuth (°)	Vertical Depth (ft)	+N/-S (ft)	+E/-W (ft)	Dogleg Rate (°/100ft)	Build Rate (°/100ft)	Turn Rate (°/100ft)	TFO (°)	Target
0.0	0.00	0.00	0.0	0.0	0.0	0.00	0.00	0.00	0.00	
1,500.0	0.00	0.00	1,500.0	0.0	0.0	0.00	0.00	0.00	0.00	
2,067.5	5.68	163.46	2,066.6	-26.9	8.0	1.00	1.00	0.00	163.46	
3,240.1	5.68	163.46	3,233.4	-138.1	41.0	0.00	0.00	0.00	0.00	
3,807.6	0.00	0.00	3,800.0	-165.0	49.0	1.00	-1.00	0.00	180.00	
6,510.4	0.00	0.00	6,502.8	-165.0	49.0	0.00	0.00	0.00	0.00	
7,641.2	90.46	270.00	7,219.0	-165.0	-672.9	8.00	8.00	0.00	270.00	
7,641.5	90.46	270.00	7,219.0	-165.0	-673.3	0.00	0.00	0.00	0.00	LPL 1870'FNL, 470
7,657.8	90.46	269.67	7,218.9	-165.1	-689.6	2.00	0.03	-2.00	-89.22	
11,959.5	90.46	269.67	7,184.0	-189.7	-4,991.0	0.00	0.00	0.00	0.00	BHL 1870'FNL, 470

<b>Database:</b>	Landmark	<b>Local Co-ordinate Reference:</b>	Well Hester Farms I-36HN
<b>Company:</b>	Bayswater Exploration & Production, LLC	<b>TVD Reference:</b>	WELL @ 4939.0ft (RKB - 25')
<b>Project:</b>	SEC.31-T7N-R66W	<b>MD Reference:</b>	WELL @ 4939.0ft (RKB - 25')
<b>Site:</b>	Hester Farms Pad Sec.31-7N-66W	<b>North Reference:</b>	True
<b>Well:</b>	Hester Farms I-36HN	<b>Survey Calculation Method:</b>	Minimum Curvature
<b>Wellbore:</b>	Wellbore #1		
<b>Design:</b>	Plan #1 (5-06-15)		

Planned Survey									
Measured Depth (ft)	Inclination (°)	Azimuth (°)	Vertical Depth (ft)	+N/-S (ft)	+E/-W (ft)	Vertical Section (ft)	Dogleg Rate (°/100ft)	Build Rate (°/100ft)	Turn Rate (°/100ft)
0.0	0.00	0.00	0.0	0.0	0.0	0.0	0.00	0.00	0.00
100.0	0.00	0.00	100.0	0.0	0.0	0.0	0.00	0.00	0.00
200.0	0.00	0.00	200.0	0.0	0.0	0.0	0.00	0.00	0.00
300.0	0.00	0.00	300.0	0.0	0.0	0.0	0.00	0.00	0.00
400.0	0.00	0.00	400.0	0.0	0.0	0.0	0.00	0.00	0.00
500.0	0.00	0.00	500.0	0.0	0.0	0.0	0.00	0.00	0.00
600.0	0.00	0.00	600.0	0.0	0.0	0.0	0.00	0.00	0.00
700.0	0.00	0.00	700.0	0.0	0.0	0.0	0.00	0.00	0.00
800.0	0.00	0.00	800.0	0.0	0.0	0.0	0.00	0.00	0.00
900.0	0.00	0.00	900.0	0.0	0.0	0.0	0.00	0.00	0.00
1,000.0	0.00	0.00	1,000.0	0.0	0.0	0.0	0.00	0.00	0.00
1,100.0	0.00	0.00	1,100.0	0.0	0.0	0.0	0.00	0.00	0.00
1,200.0	0.00	0.00	1,200.0	0.0	0.0	0.0	0.00	0.00	0.00
1,300.0	0.00	0.00	1,300.0	0.0	0.0	0.0	0.00	0.00	0.00
1,400.0	0.00	0.00	1,400.0	0.0	0.0	0.0	0.00	0.00	0.00
1,500.0	0.00	0.00	1,500.0	0.0	0.0	0.0	0.00	0.00	0.00
<b>KOP - Start Build 1.00</b>									
1,600.0	1.00	163.46	1,600.0	-0.8	0.2	-0.2	1.00	1.00	0.00
1,700.0	2.00	163.46	1,700.0	-3.3	1.0	-0.9	1.00	1.00	0.00
1,800.0	3.00	163.46	1,799.9	-7.5	2.2	-1.9	1.00	1.00	0.00
1,900.0	4.00	163.46	1,899.7	-13.4	4.0	-3.5	1.00	1.00	0.00
2,000.0	5.00	163.46	1,999.4	-20.9	6.2	-5.4	1.00	1.00	0.00
2,067.5	5.68	163.46	2,066.6	-26.9	8.0	-7.0	1.00	1.00	0.00
2,100.0	5.68	163.46	2,098.9	-30.0	8.9	-7.8	0.00	0.00	0.00
2,200.0	5.68	163.46	2,198.4	-39.5	11.7	-10.2	0.00	0.00	0.00
2,300.0	5.68	163.46	2,297.9	-49.0	14.5	-12.7	0.00	0.00	0.00
2,400.0	5.68	163.46	2,397.4	-58.4	17.4	-15.1	0.00	0.00	0.00
2,500.0	5.68	163.46	2,497.0	-67.9	20.2	-17.6	0.00	0.00	0.00
2,600.0	5.68	163.46	2,596.5	-77.4	23.0	-20.0	0.00	0.00	0.00
2,700.0	5.68	163.46	2,696.0	-86.9	25.8	-22.5	0.00	0.00	0.00
2,800.0	5.68	163.46	2,795.5	-96.4	28.6	-24.9	0.00	0.00	0.00
2,900.0	5.68	163.46	2,895.0	-105.8	31.4	-27.4	0.00	0.00	0.00
3,000.0	5.68	163.46	2,994.5	-115.3	34.2	-29.8	0.00	0.00	0.00
3,100.0	5.68	163.46	3,094.0	-124.8	37.1	-32.3	0.00	0.00	0.00
3,200.0	5.68	163.46	3,193.5	-134.3	39.9	-34.7	0.00	0.00	0.00
3,240.1	5.68	163.46	3,233.4	-138.1	41.0	-35.7	0.00	0.00	0.00
<b>Start Drop -1.00</b>									
3,300.0	5.08	163.46	3,293.1	-143.5	42.6	-37.1	1.00	-1.00	0.00
3,400.0	4.08	163.46	3,392.7	-151.1	44.9	-39.1	1.00	-1.00	0.00
3,500.0	3.08	163.46	3,492.5	-157.1	46.6	-40.7	1.00	-1.00	0.00
3,600.0	2.08	163.46	3,592.4	-161.4	47.9	-41.8	1.00	-1.00	0.00
3,700.0	1.08	163.46	3,692.4	-164.0	48.7	-42.4	1.00	-1.00	0.00
3,800.0	0.08	163.46	3,792.4	-165.0	49.0	-42.7	1.00	-1.00	0.00
3,807.6	0.00	0.00	3,800.0	-165.0	49.0	-42.7	1.00	-1.00	0.00
3,900.0	0.00	0.00	3,892.4	-165.0	49.0	-42.7	0.00	0.00	0.00
4,000.0	0.00	0.00	3,992.4	-165.0	49.0	-42.7	0.00	0.00	0.00
4,100.0	0.00	0.00	4,092.4	-165.0	49.0	-42.7	0.00	0.00	0.00
4,200.0	0.00	0.00	4,192.4	-165.0	49.0	-42.7	0.00	0.00	0.00
4,300.0	0.00	0.00	4,292.4	-165.0	49.0	-42.7	0.00	0.00	0.00
4,400.0	0.00	0.00	4,392.4	-165.0	49.0	-42.7	0.00	0.00	0.00
4,500.0	0.00	0.00	4,492.4	-165.0	49.0	-42.7	0.00	0.00	0.00
4,600.0	0.00	0.00	4,592.4	-165.0	49.0	-42.7	0.00	0.00	0.00
4,700.0	0.00	0.00	4,692.4	-165.0	49.0	-42.7	0.00	0.00	0.00
4,800.0	0.00	0.00	4,792.4	-165.0	49.0	-42.7	0.00	0.00	0.00

<b>Database:</b>	Landmark	<b>Local Co-ordinate Reference:</b>	Well Hester Farms I-36HN
<b>Company:</b>	Bayswater Exploration & Production, LLC	<b>TVD Reference:</b>	WELL @ 4939.0ft (RKB - 25')
<b>Project:</b>	SEC.31-T7N-R66W	<b>MD Reference:</b>	WELL @ 4939.0ft (RKB - 25')
<b>Site:</b>	Hester Farms Pad Sec.31-7N-66W	<b>North Reference:</b>	True
<b>Well:</b>	Hester Farms I-36HN	<b>Survey Calculation Method:</b>	Minimum Curvature
<b>Wellbore:</b>	Wellbore #1		
<b>Design:</b>	Plan #1 (5-06-15)		

Planned Survey									
Measured Depth (ft)	Inclination (°)	Azimuth (°)	Vertical Depth (ft)	+N/-S (ft)	+E/-W (ft)	Vertical Section (ft)	Dogleg Rate (°/100ft)	Build Rate (°/100ft)	Turn Rate (°/100ft)
4,900.0	0.00	0.00	4,892.4	-165.0	49.0	-42.7	0.00	0.00	0.00
5,000.0	0.00	0.00	4,992.4	-165.0	49.0	-42.7	0.00	0.00	0.00
5,100.0	0.00	0.00	5,092.4	-165.0	49.0	-42.7	0.00	0.00	0.00
5,200.0	0.00	0.00	5,192.4	-165.0	49.0	-42.7	0.00	0.00	0.00
5,300.0	0.00	0.00	5,292.4	-165.0	49.0	-42.7	0.00	0.00	0.00
5,400.0	0.00	0.00	5,392.4	-165.0	49.0	-42.7	0.00	0.00	0.00
5,500.0	0.00	0.00	5,492.4	-165.0	49.0	-42.7	0.00	0.00	0.00
5,600.0	0.00	0.00	5,592.4	-165.0	49.0	-42.7	0.00	0.00	0.00
5,700.0	0.00	0.00	5,692.4	-165.0	49.0	-42.7	0.00	0.00	0.00
5,800.0	0.00	0.00	5,792.4	-165.0	49.0	-42.7	0.00	0.00	0.00
5,900.0	0.00	0.00	5,892.4	-165.0	49.0	-42.7	0.00	0.00	0.00
6,000.0	0.00	0.00	5,992.4	-165.0	49.0	-42.7	0.00	0.00	0.00
6,100.0	0.00	0.00	6,092.4	-165.0	49.0	-42.7	0.00	0.00	0.00
6,200.0	0.00	0.00	6,192.4	-165.0	49.0	-42.7	0.00	0.00	0.00
6,300.0	0.00	0.00	6,292.4	-165.0	49.0	-42.7	0.00	0.00	0.00
6,400.0	0.00	0.00	6,392.4	-165.0	49.0	-42.7	0.00	0.00	0.00
6,500.0	0.00	0.00	6,492.4	-165.0	49.0	-42.7	0.00	0.00	0.00
6,510.4	0.00	0.00	6,502.8	-165.0	49.0	-42.7	0.00	0.00	0.00
Start Build 8.00									
6,600.0	7.17	270.00	6,592.2	-165.0	43.4	-37.1	8.00	8.00	0.00
6,700.0	15.17	270.00	6,690.2	-165.0	24.1	-17.8	8.00	8.00	0.00
6,800.0	23.17	270.00	6,784.6	-165.0	-8.7	15.0	8.00	8.00	0.00
6,900.0	31.17	270.00	6,873.5	-165.0	-54.4	60.6	8.00	8.00	0.00
7,000.0	39.17	270.00	6,955.2	-165.0	-111.9	118.1	8.00	8.00	0.00
7,100.0	47.17	270.00	7,028.0	-165.0	-180.3	186.4	8.00	8.00	0.00
7,200.0	55.17	270.00	7,090.7	-165.0	-258.1	264.2	8.00	8.00	0.00
7,300.0	63.17	270.00	7,141.9	-165.0	-343.9	349.9	8.00	8.00	0.00
7,400.0	71.17	270.00	7,180.7	-165.0	-436.0	441.9	8.00	8.00	0.00
7,500.0	79.17	270.00	7,206.3	-165.0	-532.6	538.5	8.00	8.00	0.00
7,600.0	87.17	270.00	7,218.1	-165.0	-631.8	637.6	8.00	8.00	0.00
7,641.2	90.46	270.00	7,219.0	-165.0	-672.9	678.7	8.00	8.00	0.00
7,641.5	90.46	270.00	7,219.0	-165.0	-673.3	679.0	0.00	0.00	0.00
Start DLS 2.00 TFO -89.22 - 7"									
7,657.8	90.46	269.67	7,218.9	-165.1	-689.6	695.3	2.00	0.03	-2.00
Start 4301.7 hold at 7657.8 MD									
7,700.0	90.46	269.67	7,218.5	-165.3	-731.8	737.5	0.00	0.00	0.00
7,800.0	90.46	269.67	7,217.7	-165.9	-831.8	837.5	0.00	0.00	0.00
7,900.0	90.46	269.67	7,216.9	-166.5	-931.8	937.4	0.00	0.00	0.00
8,000.0	90.46	269.67	7,216.1	-167.0	-1,031.7	1,037.3	0.00	0.00	0.00
8,100.0	90.46	269.67	7,215.3	-167.6	-1,131.7	1,137.3	0.00	0.00	0.00
8,200.0	90.46	269.67	7,214.5	-168.2	-1,231.7	1,237.2	0.00	0.00	0.00
8,300.0	90.46	269.67	7,213.7	-168.7	-1,331.7	1,337.2	0.00	0.00	0.00
8,400.0	90.46	269.67	7,212.9	-169.3	-1,431.7	1,437.1	0.00	0.00	0.00
8,500.0	90.46	269.67	7,212.0	-169.9	-1,531.7	1,537.1	0.00	0.00	0.00
8,600.0	90.46	269.67	7,211.2	-170.5	-1,631.7	1,637.0	0.00	0.00	0.00
8,700.0	90.46	269.67	7,210.4	-171.0	-1,731.7	1,737.0	0.00	0.00	0.00
8,800.0	90.46	269.67	7,209.6	-171.6	-1,831.7	1,836.9	0.00	0.00	0.00
8,900.0	90.46	269.67	7,208.8	-172.2	-1,931.7	1,936.8	0.00	0.00	0.00
9,000.0	90.46	269.67	7,208.0	-172.7	-2,031.7	2,036.8	0.00	0.00	0.00
9,100.0	90.46	269.67	7,207.2	-173.3	-2,131.7	2,136.7	0.00	0.00	0.00
9,200.0	90.46	269.67	7,206.4	-173.9	-2,231.7	2,236.7	0.00	0.00	0.00
9,300.0	90.46	269.67	7,205.6	-174.5	-2,331.7	2,336.6	0.00	0.00	0.00
9,400.0	90.46	269.67	7,204.7	-175.0	-2,431.7	2,436.6	0.00	0.00	0.00

<b>Database:</b>	Landmark	<b>Local Co-ordinate Reference:</b>	Well Hester Farms I-36HN
<b>Company:</b>	Bayswater Exploration & Production, LLC	<b>TVD Reference:</b>	WELL @ 4939.0ft (RKB - 25')
<b>Project:</b>	SEC.31-T7N-R66W	<b>MD Reference:</b>	WELL @ 4939.0ft (RKB - 25')
<b>Site:</b>	Hester Farms Pad Sec.31-7N-66W	<b>North Reference:</b>	True
<b>Well:</b>	Hester Farms I-36HN	<b>Survey Calculation Method:</b>	Minimum Curvature
<b>Wellbore:</b>	Wellbore #1		
<b>Design:</b>	Plan #1 (5-06-15)		

Planned Survey										
Measured Depth (ft)	Inclination (°)	Azimuth (°)	Vertical Depth (ft)	+N/-S (ft)	+E/-W (ft)	Vertical Section (ft)	Dogleg Rate (°/100ft)	Build Rate (°/100ft)	Turn Rate (°/100ft)	
9,500.0	90.46	269.67	7,203.9	-175.6	-2,531.7	2,536.5	0.00	0.00	0.00	
9,600.0	90.46	269.67	7,203.1	-176.2	-2,631.7	2,636.5	0.00	0.00	0.00	
9,700.0	90.46	269.67	7,202.3	-176.7	-2,731.7	2,736.4	0.00	0.00	0.00	
9,800.0	90.46	269.67	7,201.5	-177.3	-2,831.7	2,836.4	0.00	0.00	0.00	
9,900.0	90.46	269.67	7,200.7	-177.9	-2,931.7	2,936.3	0.00	0.00	0.00	
10,000.0	90.46	269.67	7,199.9	-178.5	-3,031.7	3,036.2	0.00	0.00	0.00	
10,100.0	90.46	269.67	7,199.1	-179.0	-3,131.6	3,136.2	0.00	0.00	0.00	
10,200.0	90.46	269.67	7,198.3	-179.6	-3,231.6	3,236.1	0.00	0.00	0.00	
10,300.0	90.46	269.67	7,197.5	-180.2	-3,331.6	3,336.1	0.00	0.00	0.00	
10,400.0	90.46	269.67	7,196.6	-180.7	-3,431.6	3,436.0	0.00	0.00	0.00	
10,500.0	90.46	269.67	7,195.8	-181.3	-3,531.6	3,536.0	0.00	0.00	0.00	
10,600.0	90.46	269.67	7,195.0	-181.9	-3,631.6	3,635.9	0.00	0.00	0.00	
10,700.0	90.46	269.67	7,194.2	-182.5	-3,731.6	3,735.9	0.00	0.00	0.00	
10,800.0	90.46	269.67	7,193.4	-183.0	-3,831.6	3,835.8	0.00	0.00	0.00	
10,900.0	90.46	269.67	7,192.6	-183.6	-3,931.6	3,935.7	0.00	0.00	0.00	
11,000.0	90.46	269.67	7,191.8	-184.2	-4,031.6	4,035.7	0.00	0.00	0.00	
11,100.0	90.46	269.67	7,191.0	-184.7	-4,131.6	4,135.6	0.00	0.00	0.00	
11,200.0	90.46	269.67	7,190.2	-185.3	-4,231.6	4,235.6	0.00	0.00	0.00	
11,300.0	90.46	269.67	7,189.3	-185.9	-4,331.6	4,335.5	0.00	0.00	0.00	
11,400.0	90.46	269.67	7,188.5	-186.5	-4,431.6	4,435.5	0.00	0.00	0.00	
11,500.0	90.46	269.67	7,187.7	-187.0	-4,531.6	4,535.4	0.00	0.00	0.00	
11,600.0	90.46	269.67	7,186.9	-187.6	-4,631.6	4,635.4	0.00	0.00	0.00	
11,700.0	90.46	269.67	7,186.1	-188.2	-4,731.6	4,735.3	0.00	0.00	0.00	
11,800.0	90.46	269.67	7,185.3	-188.8	-4,831.6	4,835.2	0.00	0.00	0.00	
11,900.0	90.46	269.67	7,184.5	-189.3	-4,931.6	4,935.2	0.00	0.00	0.00	
11,959.5	90.46	269.67	7,184.0	-189.7	-4,991.0	4,994.6	0.00	0.00	0.00	

Targets										
Target Name	- hit/miss target	Dip Angle (°)	Dip Dir. (°)	TVD (ft)	+N/-S (ft)	+E/-W (ft)	Northing (ft)	Easting (ft)	Latitude	Longitude
SHL 1709'FNL, 202'F <sup>1</sup>	- plan hits target center	0.00	0.00	1.0	0.0	0.0	1,437,819.30	3,185,849.14	40.533291	-104.831382
- Point										
BHL 1870'FNL, 470'F <sup>1</sup>	- plan hits target center	0.00	0.00	7,184.0	-189.7	-4,991.0	1,437,592.02	3,180,859.85	40.532769	-104.849337
- Point										
LPL 1870'FNL, 470'F <sup>1</sup>	- plan hits target center	0.00	0.00	7,219.0	-165.0	-673.3	1,437,649.21	3,185,177.18	40.532838	-104.833804
- Point										

Casing Points						
Measured Depth (ft)	Vertical Depth (ft)	Name	Casing Diameter (")	Hole Diameter (")		
7,641.5	7,219.0	7"	7	7-1/2		

<b>Database:</b>	Landmark	<b>Local Co-ordinate Reference:</b>	Well Hester Farms I-36HN
<b>Company:</b>	Bayswater Exploration & Production, LLC	<b>TVD Reference:</b>	WELL @ 4939.0ft (RKB - 25')
<b>Project:</b>	SEC.31-T7N-R66W	<b>MD Reference:</b>	WELL @ 4939.0ft (RKB - 25')
<b>Site:</b>	Hester Farms Pad Sec.31-7N-66W	<b>North Reference:</b>	True
<b>Well:</b>	Hester Farms I-36HN	<b>Survey Calculation Method:</b>	Minimum Curvature
<b>Wellbore:</b>	Wellbore #1		
<b>Design:</b>	Plan #1 (5-06-15)		

Plan Annotations				
Measured Depth (ft)	Vertical Depth (ft)	Local Coordinates		Comment
		+N/-S (ft)	+E/-W (ft)	
1,500.0	1,500.0	0.0	0.0	KOP - Start Build 1.00
3,240.1	3,233.4	-138.1	41.0	Start Drop -1.00
6,510.4	6,502.8	-165.0	49.0	Start Build 8.00
7,641.5	7,219.0	-165.0	-673.3	Start DLS 2.00 TFO -89.22
7,657.8	7,218.9	-165.1	-689.6	Start 4301.7 hold at 7657.8 MD
11,959.5	7,184.0	-189.7	-4,991.1	TD at 11959.5