

Bayswater Exploration & Production, LLC

Well Name: **Hester Farms H-36HC**

Surface Location: Hester Farms Pad Sec.31-7N-66W

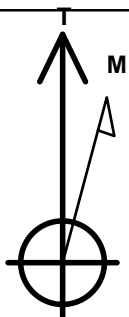
North American Datum 1983 , US State Plane 1983 , Colorado Northern Zone

Ground Elevation: 4914.0

+N/-S	+E/-W	Northing	Easting	Latitude	Longitude	Slot
0.0	0.0	1437834.23	3185849.31	40.533332	-104.831381	
RKB - 25' WELL @ 4939.0ft (RKB - 25')						

WELLBORE TARGET DETAILS

Name	TVD	+N/-S	+E/-W	Shape
SHL 1694'FNL, 202'FWL, SEC.31	1.0	0.0	0.0	Point
BHL 1645'FNL, 470'FWL, SEC.36	7271.0	20.6	-4988.8	Point
LPL 1645'FNL, 470'FEL, SEC.36	7299.0	45.2	-671.6	Point



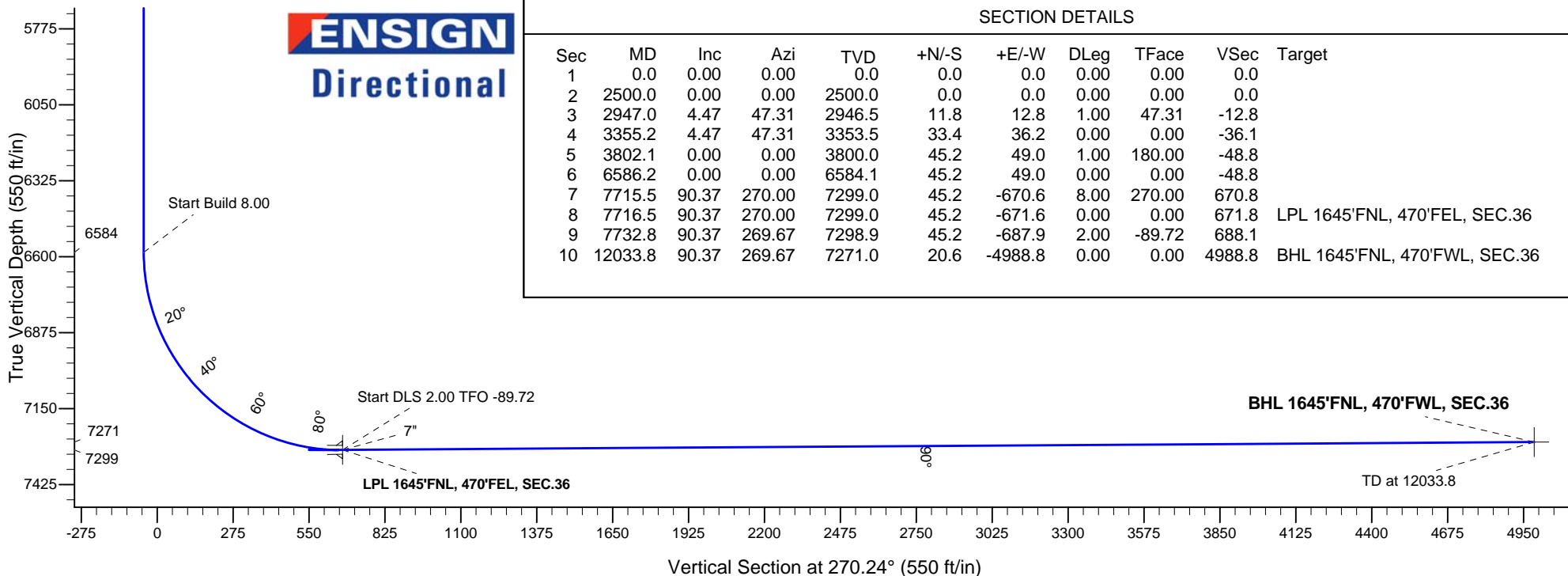
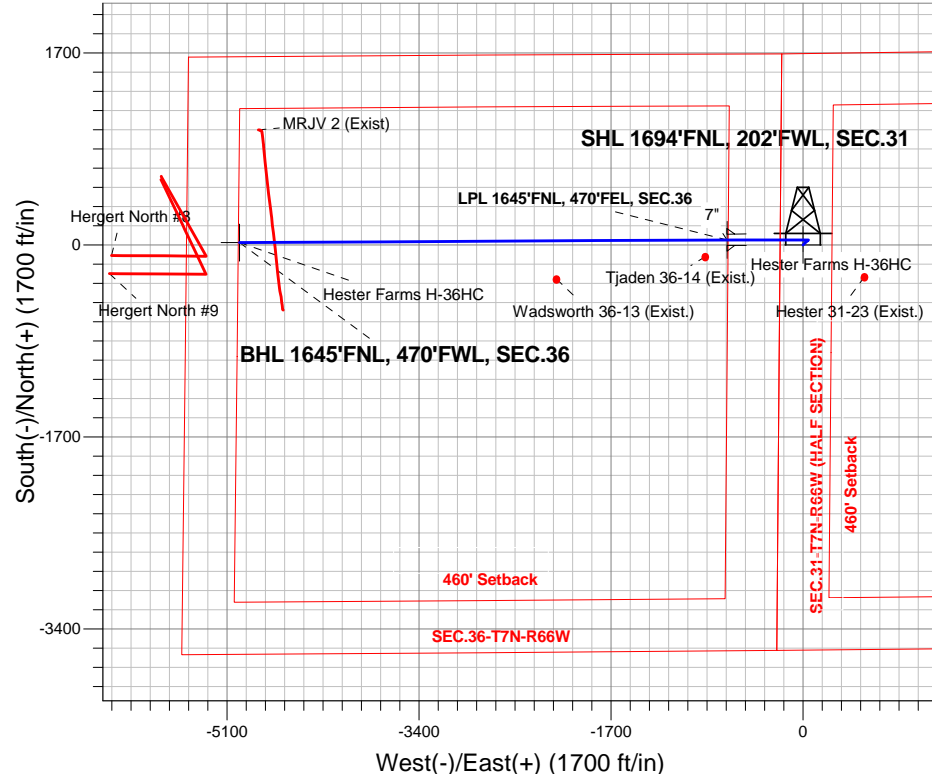
Azimuths to True North
Magnetic North: 8.38°

Magnetic Field
Strength: 52779.3nT
Dip Angle: 67.01°
Date: 5/20/2015
Model: IGRF2010

Hester Farms Pad Sec.31-7N-66W
Hester Farms H-36HC
Plan #1 (5-06-15)
5:07, May 20 2015

ANNOTATIONS

TVD	MD	Annotation
2500.0	2500.0	KOP - Start Build 1.00
3353.5	3355.2	Start Drop -1.00
6584.1	6586.2	Start Build 8.00
7299.0	7716.5	Start DLS 2.00 TFO -89.72
7298.9	7732.8	Start 4301.0 hold at 7732.8 MD
7271.0	12033.8	TD at 12033.8





Bayswater Exploration & Production, LLC

SEC.31-T7N-R66W

Hester Farms Pad Sec.31-7N-66W

Hester Farms H-36HC

Wellbore #1

Plan: Plan #1 (5-06-15)

Standard Planning Report

20 May, 2015



BAYSWATER
EXPLORATION & PRODUCTION, LLC

Database:	Landmark	Local Co-ordinate Reference:	Well Hester Farms H-36HC
Company:	Bayswater Exploration & Production, LLC	TVD Reference:	WELL @ 4939.0ft (RKB - 25')
Project:	SEC.31-T7N-R66W	MD Reference:	WELL @ 4939.0ft (RKB - 25')
Site:	Hester Farms Pad Sec.31-7N-66W	North Reference:	True
Well:	Hester Farms H-36HC	Survey Calculation Method:	Minimum Curvature
Wellbore:	Wellbore #1		
Design:	Plan #1 (5-06-15)		

Project	SEC.31-T7N-R66W, Weld County, Colorado		
Map System:	US State Plane 1983	System Datum:	Mean Sea Level
Geo Datum:	North American Datum 1983		Using Well Reference Point
Map Zone:	Colorado Northern Zone		Using geodetic scale factor

Site		Hester Farms Pad Sec.31-7N-66W				
Site Position:		Northing:	1,437,939.53 ft	Latitude:	40.533621	
From:	Lat/Long	Easting:	3,185,849.35 ft	Longitude:	-104.831378	
Position Uncertainty:		0.0 ft	Slot Radius:	"	Grid Convergence:	0.43 °

Well	Hester Farms H-36HC					
Well Position	+N-S	-105.3 ft	Northing:	1,437,834.23 ft	Latitude:	40.533332
	+E-W	-0.8 ft	Easting:	3,185,849.31 ft	Longitude:	-104.831381
Position Uncertainty		0.0 ft	Wellhead Elevation:	ft	Ground Level:	4,914.0 ft

Wellbore	Wellbore #1				
Magnetics	Model Name	Sample Date	Declination (°)	Dip Angle (°)	Field Strength (nT)
	IGRF2010	5/20/2015	8.38	67.01	52,779

Design	Plan #1 (5-06-15)			
Audit Notes:				
Version:	Phase:	PROTOTYPE	Tie On Depth:	0.0
Vertical Section:	Depth From (TVD) (ft)	+N/-S (ft)	+E/-W (ft)	Direction (°)
	0.0	0.0	0.0	270.24

Plan Sections										
Measured Depth (ft)	Inclination (°)	Azimuth (°)	Vertical Depth (ft)	+N/-S (ft)	+E/-W (ft)	Dogleg Rate (°/100ft)	Build Rate (°/100ft)	Turn Rate (°/100ft)	TFO (°)	Target
0.0	0.00	0.00	0.0	0.0	0.0	0.00	0.00	0.00	0.00	
2,500.0	0.00	0.00	2,500.0	0.0	0.0	0.00	0.00	0.00	0.00	
2,947.0	4.47	47.31	2,946.5	11.8	12.8	1.00	1.00	0.00	47.31	
3,355.2	4.47	47.31	3,353.5	33.4	36.2	0.00	0.00	0.00	0.00	
3,802.1	0.00	0.00	3,800.0	45.2	49.0	1.00	-1.00	0.00	180.00	
6,586.2	0.00	0.00	6,584.1	45.2	49.0	0.00	0.00	0.00	0.00	
7,715.5	90.37	270.00	7,299.0	45.2	-670.6	8.00	8.00	0.00	270.00	
7,716.5	90.37	270.00	7,299.0	45.2	-671.6	0.00	0.00	0.00	0.00	LPL 1645'FNL, 470
7,732.8	90.37	269.67	7,298.9	45.2	-687.9	2.00	0.01	-2.00	-89.72	
12,033.8	90.37	269.67	7,271.0	20.6	-4,988.8	0.00	0.00	0.00	0.00	BHL 1645'FNL, 470

Database:	Landmark	Local Co-ordinate Reference:	Well Hester Farms H-36HC
Company:	Bayswater Exploration & Production, LLC	TVD Reference:	WELL @ 4939.0ft (RKB - 25')
Project:	SEC.31-T7N-R66W	MD Reference:	WELL @ 4939.0ft (RKB - 25')
Site:	Hester Farms Pad Sec.31-7N-66W	North Reference:	True
Well:	Hester Farms H-36HC	Survey Calculation Method:	Minimum Curvature
Wellbore:	Wellbore #1		
Design:	Plan #1 (5-06-15)		

Planned Survey									
Measured Depth (ft)	Inclination (°)	Azimuth (°)	Vertical Depth (ft)	+N/-S (ft)	+E/-W (ft)	Vertical Section (ft)	Dogleg Rate (°/100ft)	Build Rate (°/100ft)	Turn Rate (°/100ft)
0.0	0.00	0.00	0.0	0.0	0.0	0.0	0.00	0.00	0.00
100.0	0.00	0.00	100.0	0.0	0.0	0.0	0.00	0.00	0.00
200.0	0.00	0.00	200.0	0.0	0.0	0.0	0.00	0.00	0.00
300.0	0.00	0.00	300.0	0.0	0.0	0.0	0.00	0.00	0.00
400.0	0.00	0.00	400.0	0.0	0.0	0.0	0.00	0.00	0.00
500.0	0.00	0.00	500.0	0.0	0.0	0.0	0.00	0.00	0.00
600.0	0.00	0.00	600.0	0.0	0.0	0.0	0.00	0.00	0.00
700.0	0.00	0.00	700.0	0.0	0.0	0.0	0.00	0.00	0.00
800.0	0.00	0.00	800.0	0.0	0.0	0.0	0.00	0.00	0.00
900.0	0.00	0.00	900.0	0.0	0.0	0.0	0.00	0.00	0.00
1,000.0	0.00	0.00	1,000.0	0.0	0.0	0.0	0.00	0.00	0.00
1,100.0	0.00	0.00	1,100.0	0.0	0.0	0.0	0.00	0.00	0.00
1,200.0	0.00	0.00	1,200.0	0.0	0.0	0.0	0.00	0.00	0.00
1,300.0	0.00	0.00	1,300.0	0.0	0.0	0.0	0.00	0.00	0.00
1,400.0	0.00	0.00	1,400.0	0.0	0.0	0.0	0.00	0.00	0.00
1,500.0	0.00	0.00	1,500.0	0.0	0.0	0.0	0.00	0.00	0.00
1,600.0	0.00	0.00	1,600.0	0.0	0.0	0.0	0.00	0.00	0.00
1,700.0	0.00	0.00	1,700.0	0.0	0.0	0.0	0.00	0.00	0.00
1,800.0	0.00	0.00	1,800.0	0.0	0.0	0.0	0.00	0.00	0.00
1,900.0	0.00	0.00	1,900.0	0.0	0.0	0.0	0.00	0.00	0.00
2,000.0	0.00	0.00	2,000.0	0.0	0.0	0.0	0.00	0.00	0.00
2,100.0	0.00	0.00	2,100.0	0.0	0.0	0.0	0.00	0.00	0.00
2,200.0	0.00	0.00	2,200.0	0.0	0.0	0.0	0.00	0.00	0.00
2,300.0	0.00	0.00	2,300.0	0.0	0.0	0.0	0.00	0.00	0.00
2,400.0	0.00	0.00	2,400.0	0.0	0.0	0.0	0.00	0.00	0.00
2,500.0	0.00	0.00	2,500.0	0.0	0.0	0.0	0.00	0.00	0.00
KOP - Start Build 1.00									
2,600.0	1.00	47.31	2,600.0	0.6	0.6	-0.6	1.00	1.00	0.00
2,700.0	2.00	47.31	2,700.0	2.4	2.6	-2.6	1.00	1.00	0.00
2,800.0	3.00	47.31	2,799.9	5.3	5.8	-5.7	1.00	1.00	0.00
2,900.0	4.00	47.31	2,899.7	9.5	10.3	-10.2	1.00	1.00	0.00
2,947.0	4.47	47.31	2,946.5	11.8	12.8	-12.8	1.00	1.00	0.00
3,000.0	4.47	47.31	2,999.4	14.6	15.8	-15.8	0.00	0.00	0.00
3,100.0	4.47	47.31	3,099.1	19.9	21.6	-21.5	0.00	0.00	0.00
3,200.0	4.47	47.31	3,198.8	25.2	27.3	-27.2	0.00	0.00	0.00
3,300.0	4.47	47.31	3,298.5	30.5	33.0	-32.9	0.00	0.00	0.00
3,355.2	4.47	47.31	3,353.5	33.4	36.2	-36.1	0.00	0.00	0.00
Start Drop -1.00									
3,400.0	4.02	47.31	3,398.2	35.6	38.6	-38.5	1.00	-1.00	0.00
3,500.0	3.02	47.31	3,498.0	39.8	43.1	-43.0	1.00	-1.00	0.00
3,600.0	2.02	47.31	3,597.9	42.8	46.4	-46.2	1.00	-1.00	0.00
3,700.0	1.02	47.31	3,697.9	44.6	48.3	-48.1	1.00	-1.00	0.00
3,800.0	0.02	47.31	3,797.9	45.2	49.0	-48.8	1.00	-1.00	0.00
3,802.1	0.00	0.00	3,800.0	45.2	49.0	-48.8	1.00	-1.00	0.00
3,900.0	0.00	0.00	3,897.9	45.2	49.0	-48.8	0.00	0.00	0.00
4,000.0	0.00	0.00	3,997.9	45.2	49.0	-48.8	0.00	0.00	0.00
4,100.0	0.00	0.00	4,097.9	45.2	49.0	-48.8	0.00	0.00	0.00
4,200.0	0.00	0.00	4,197.9	45.2	49.0	-48.8	0.00	0.00	0.00
4,300.0	0.00	0.00	4,297.9	45.2	49.0	-48.8	0.00	0.00	0.00
4,400.0	0.00	0.00	4,397.9	45.2	49.0	-48.8	0.00	0.00	0.00
4,500.0	0.00	0.00	4,497.9	45.2	49.0	-48.8	0.00	0.00	0.00
4,600.0	0.00	0.00	4,597.9	45.2	49.0	-48.8	0.00	0.00	0.00
4,700.0	0.00	0.00	4,697.9	45.2	49.0	-48.8	0.00	0.00	0.00
4,800.0	0.00	0.00	4,797.9	45.2	49.0	-48.8	0.00	0.00	0.00

Database:	Landmark	Local Co-ordinate Reference:	Well Hester Farms H-36HC
Company:	Bayswater Exploration & Production, LLC	TVD Reference:	WELL @ 4939.0ft (RKB - 25')
Project:	SEC.31-T7N-R66W	MD Reference:	WELL @ 4939.0ft (RKB - 25')
Site:	Hester Farms Pad Sec.31-7N-66W	North Reference:	True
Well:	Hester Farms H-36HC	Survey Calculation Method:	Minimum Curvature
Wellbore:	Wellbore #1		
Design:	Plan #1 (5-06-15)		

Planned Survey									
Measured Depth (ft)	Inclination (°)	Azimuth (°)	Vertical Depth (ft)	+N/-S (ft)	+E/-W (ft)	Vertical Section (ft)	Dogleg Rate (°/100ft)	Build Rate (°/100ft)	Turn Rate (°/100ft)
4,900.0	0.00	0.00	4,897.9	45.2	49.0	-48.8	0.00	0.00	0.00
5,000.0	0.00	0.00	4,997.9	45.2	49.0	-48.8	0.00	0.00	0.00
5,100.0	0.00	0.00	5,097.9	45.2	49.0	-48.8	0.00	0.00	0.00
5,200.0	0.00	0.00	5,197.9	45.2	49.0	-48.8	0.00	0.00	0.00
5,300.0	0.00	0.00	5,297.9	45.2	49.0	-48.8	0.00	0.00	0.00
5,400.0	0.00	0.00	5,397.9	45.2	49.0	-48.8	0.00	0.00	0.00
5,500.0	0.00	0.00	5,497.9	45.2	49.0	-48.8	0.00	0.00	0.00
5,600.0	0.00	0.00	5,597.9	45.2	49.0	-48.8	0.00	0.00	0.00
5,700.0	0.00	0.00	5,697.9	45.2	49.0	-48.8	0.00	0.00	0.00
5,800.0	0.00	0.00	5,797.9	45.2	49.0	-48.8	0.00	0.00	0.00
5,900.0	0.00	0.00	5,897.9	45.2	49.0	-48.8	0.00	0.00	0.00
6,000.0	0.00	0.00	5,997.9	45.2	49.0	-48.8	0.00	0.00	0.00
6,100.0	0.00	0.00	6,097.9	45.2	49.0	-48.8	0.00	0.00	0.00
6,200.0	0.00	0.00	6,197.9	45.2	49.0	-48.8	0.00	0.00	0.00
6,300.0	0.00	0.00	6,297.9	45.2	49.0	-48.8	0.00	0.00	0.00
6,400.0	0.00	0.00	6,397.9	45.2	49.0	-48.8	0.00	0.00	0.00
6,500.0	0.00	0.00	6,497.9	45.2	49.0	-48.8	0.00	0.00	0.00
6,586.2	0.00	0.00	6,584.1	45.2	49.0	-48.8	0.00	0.00	0.00
Start Build 8.00									
6,600.0	1.10	270.00	6,597.9	45.2	48.9	-48.7	8.00	8.00	0.00
6,700.0	9.11	270.00	6,697.4	45.2	40.0	-39.8	8.00	8.00	0.00
6,800.0	17.11	270.00	6,794.7	45.2	17.3	-17.1	8.00	8.00	0.00
6,900.0	25.11	270.00	6,887.9	45.2	-18.7	18.9	8.00	8.00	0.00
7,000.0	33.11	270.00	6,975.2	45.2	-67.3	67.5	8.00	8.00	0.00
7,100.0	41.12	270.00	7,054.9	45.2	-127.6	127.8	8.00	8.00	0.00
7,200.0	49.12	270.00	7,125.4	45.2	-198.4	198.6	8.00	8.00	0.00
7,300.0	57.12	270.00	7,185.3	45.2	-278.3	278.5	8.00	8.00	0.00
7,400.0	65.13	270.00	7,233.6	45.2	-365.8	366.0	8.00	8.00	0.00
7,500.0	73.13	270.00	7,269.2	45.2	-459.2	459.3	8.00	8.00	0.00
7,600.0	81.13	270.00	7,291.5	45.2	-556.6	556.8	8.00	8.00	0.00
7,700.0	89.13	270.00	7,299.9	45.2	-656.1	656.3	8.00	8.00	0.00
7,715.5	90.37	270.00	7,299.0	45.2	-670.6	670.8	8.00	8.00	0.00
7,716.5	90.37	270.00	7,299.0	45.2	-671.6	671.8	0.00	0.00	0.00
Start DLS 2.00 TFO -89.72 - 7"									
7,732.8	90.37	269.67	7,298.9	45.2	-687.9	688.1	2.01	0.01	-2.01
Start 4301.0 hold at 7732.8 MD									
7,800.0	90.37	269.67	7,298.5	44.8	-755.1	755.3	0.00	0.00	0.00
7,900.0	90.37	269.67	7,297.8	44.2	-855.1	855.3	0.00	0.00	0.00
8,000.0	90.37	269.67	7,297.2	43.6	-955.1	955.3	0.00	0.00	0.00
8,100.0	90.37	269.67	7,296.5	43.1	-1,055.1	1,055.3	0.00	0.00	0.00
8,200.0	90.37	269.67	7,295.9	42.5	-1,155.1	1,155.3	0.00	0.00	0.00
8,300.0	90.37	269.67	7,295.2	41.9	-1,255.1	1,255.3	0.00	0.00	0.00
8,400.0	90.37	269.67	7,294.6	41.3	-1,355.1	1,355.3	0.00	0.00	0.00
8,500.0	90.37	269.67	7,293.9	40.8	-1,455.1	1,455.3	0.00	0.00	0.00
8,600.0	90.37	269.67	7,293.3	40.2	-1,555.1	1,555.2	0.00	0.00	0.00
8,700.0	90.37	269.67	7,292.6	39.6	-1,655.1	1,655.2	0.00	0.00	0.00
8,800.0	90.37	269.67	7,292.0	39.0	-1,755.1	1,755.2	0.00	0.00	0.00
8,900.0	90.37	269.67	7,291.3	38.5	-1,855.1	1,855.2	0.00	0.00	0.00
9,000.0	90.37	269.67	7,290.7	37.9	-1,955.1	1,955.2	0.00	0.00	0.00
9,100.0	90.37	269.67	7,290.0	37.3	-2,055.1	2,055.2	0.00	0.00	0.00
9,200.0	90.37	269.67	7,289.4	36.8	-2,155.1	2,155.2	0.00	0.00	0.00
9,300.0	90.37	269.67	7,288.7	36.2	-2,255.1	2,255.2	0.00	0.00	0.00
9,400.0	90.37	269.67	7,288.1	35.6	-2,355.1	2,355.2	0.00	0.00	0.00

Database:	Landmark	Local Co-ordinate Reference:	Well Hester Farms H-36HC
Company:	Bayswater Exploration & Production, LLC	TVD Reference:	WELL @ 4939.0ft (RKB - 25')
Project:	SEC.31-T7N-R66W	MD Reference:	WELL @ 4939.0ft (RKB - 25')
Site:	Hester Farms Pad Sec.31-7N-66W	North Reference:	True
Well:	Hester Farms H-36HC	Survey Calculation Method:	Minimum Curvature
Wellbore:	Wellbore #1		
Design:	Plan #1 (5-06-15)		

Planned Survey										
Measured Depth (ft)	Inclination (°)	Azimuth (°)	Vertical Depth (ft)	+N/-S (ft)	+E/-W (ft)	Vertical Section (ft)	Dogleg Rate (°/100ft)	Build Rate (°/100ft)	Turn Rate (°/100ft)	
9,500.0	90.37	269.67	7,287.4	35.0	-2,455.1	2,455.2	0.00	0.00	0.00	
9,600.0	90.37	269.67	7,286.8	34.5	-2,555.1	2,555.2	0.00	0.00	0.00	
9,700.0	90.37	269.67	7,286.1	33.9	-2,655.1	2,655.2	0.00	0.00	0.00	
9,800.0	90.37	269.67	7,285.5	33.3	-2,755.0	2,755.2	0.00	0.00	0.00	
9,900.0	90.37	269.67	7,284.8	32.8	-2,855.0	2,855.2	0.00	0.00	0.00	
10,000.0	90.37	269.67	7,284.2	32.2	-2,955.0	2,955.2	0.00	0.00	0.00	
10,100.0	90.37	269.67	7,283.5	31.6	-3,055.0	3,055.1	0.00	0.00	0.00	
10,200.0	90.37	269.67	7,282.9	31.0	-3,155.0	3,155.1	0.00	0.00	0.00	
10,300.0	90.37	269.67	7,282.2	30.5	-3,255.0	3,255.1	0.00	0.00	0.00	
10,400.0	90.37	269.67	7,281.6	29.9	-3,355.0	3,355.1	0.00	0.00	0.00	
10,500.0	90.37	269.67	7,280.9	29.3	-3,455.0	3,455.1	0.00	0.00	0.00	
10,600.0	90.37	269.67	7,280.3	28.8	-3,555.0	3,555.1	0.00	0.00	0.00	
10,700.0	90.37	269.67	7,279.7	28.2	-3,655.0	3,655.1	0.00	0.00	0.00	
10,800.0	90.37	269.67	7,279.0	27.6	-3,755.0	3,755.1	0.00	0.00	0.00	
10,900.0	90.37	269.67	7,278.4	27.0	-3,855.0	3,855.1	0.00	0.00	0.00	
11,000.0	90.37	269.67	7,277.7	26.5	-3,955.0	3,955.1	0.00	0.00	0.00	
11,100.0	90.37	269.67	7,277.1	25.9	-4,055.0	4,055.1	0.00	0.00	0.00	
11,200.0	90.37	269.67	7,276.4	25.3	-4,155.0	4,155.1	0.00	0.00	0.00	
11,300.0	90.37	269.67	7,275.8	24.8	-4,255.0	4,255.1	0.00	0.00	0.00	
11,400.0	90.37	269.67	7,275.1	24.2	-4,355.0	4,355.1	0.00	0.00	0.00	
11,500.0	90.37	269.67	7,274.5	23.6	-4,455.0	4,455.0	0.00	0.00	0.00	
11,600.0	90.37	269.67	7,273.8	23.0	-4,555.0	4,555.0	0.00	0.00	0.00	
11,700.0	90.37	269.67	7,273.2	22.5	-4,655.0	4,655.0	0.00	0.00	0.00	
11,800.0	90.37	269.67	7,272.5	21.9	-4,755.0	4,755.0	0.00	0.00	0.00	
11,900.0	90.37	269.67	7,271.9	21.3	-4,855.0	4,855.0	0.00	0.00	0.00	
12,000.0	90.37	269.67	7,271.2	20.7	-4,955.0	4,955.0	0.00	0.00	0.00	
12,033.8	90.37	269.67	7,271.0	20.6	-4,988.8	4,988.8	0.00	0.00	0.00	

Targets										
Target Name	Dip Angle (°)	Dip Dir. (°)	TVD (ft)	+N/-S (ft)	+E/-W (ft)	Northing (ft)	Easting (ft)	Latitude	Longitude	
- hit/miss target										
- Shape										
BHL 1645'FNL, 470'F ¹	0.00	0.00	7,271.0	20.6	-4,988.8	1,437,817.17	3,180,860.70	40.533387	-104.849328	
- plan hits target center										
- Point										
SHL 1694'FNL, 202'F ¹	0.00	0.00	1.0	0.0	0.0	1,437,834.24	3,185,849.31	40.533332	-104.831381	
- plan hits target center										
- Point										
LPL 1645'FNL, 470'F ¹	0.00	0.00	7,299.0	45.2	-671.6	1,437,874.36	3,185,177.43	40.533456	-104.833797	
- plan hits target center										
- Point										

Casing Points					
Measured Depth (ft)	Vertical Depth (ft)	Name	Casing Diameter (")	Hole Diameter (")	
7,716.5	7,299.0	7"	7	7-1/2	

Database:	Landmark	Local Co-ordinate Reference:	Well Hester Farms H-36HC
Company:	Bayswater Exploration & Production, LLC	TVD Reference:	WELL @ 4939.0ft (RKB - 25')
Project:	SEC.31-T7N-R66W	MD Reference:	WELL @ 4939.0ft (RKB - 25')
Site:	Hester Farms Pad Sec.31-7N-66W	North Reference:	True
Well:	Hester Farms H-36HC	Survey Calculation Method:	Minimum Curvature
Wellbore:	Wellbore #1		
Design:	Plan #1 (5-06-15)		

Plan Annotations				
Measured Depth (ft)	Vertical Depth (ft)	Local Coordinates		Comment
		+N/-S (ft)	+E/-W (ft)	
2,500.0	2,500.0	0.0	0.0	KOP - Start Build 1.00
3,355.2	3,353.5	33.4	36.2	Start Drop -1.00
6,586.2	6,584.1	45.2	49.0	Start Build 8.00
7,716.5	7,299.0	45.2	-671.6	Start DLS 2.00 TFO -89.72
7,732.8	7,298.9	45.2	-687.9	Start 4301.0 hold at 7732.8 MD
12,033.8	7,271.0	20.6	-4,988.8	TD at 12033.8