

Bayswater Exploration & Production, LLC

Well Name: Hester Farms F-36HN

Surface Location: Hester Farms Pad Sec.31-7N-66W

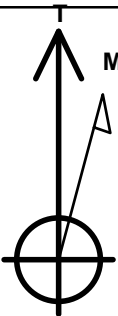
North American Datum 1983 , US State Plane 1983 , Colorado Northern Zone

Ground Elevation: 4914.0

+N/-S	+E/-W	Northing	Easting	Latitude	Longitude	Slot
0.0	0.0	1437864.48	3185849.36	40.533415	-104.831380	
RKB -25' WELL @ 4939.0ft (RKB -25')						

WELLBORE TARGET DETAILS

Name	TVD	+N/-S	+E/-W	Shape
SHL 1664'FNL, 202'FWL, SEC.31	1.0	0.0	0.0	Point
BHL 1150'FNL, 470'FWL, SEC.36	7181.0	485.4	-4983.7	Point
LPL 1150'FNL, 470'FEL, SEC.36	7229.0	510.1	-667.7	Point



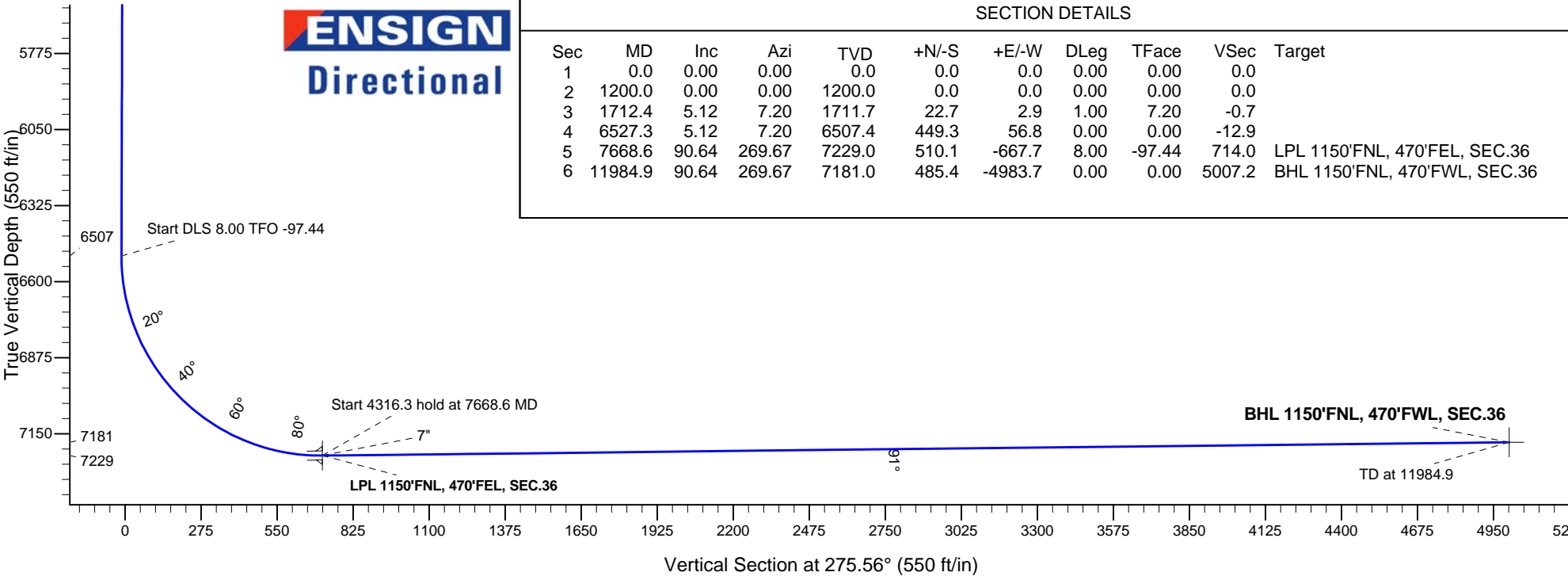
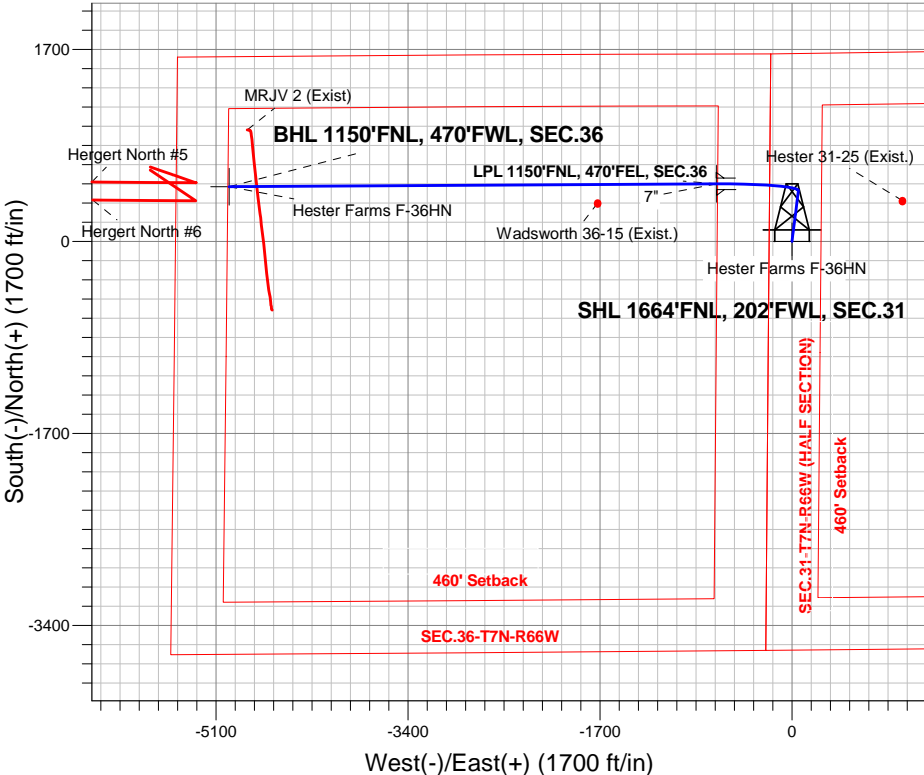
Azimuths to True North
Magnetic North: 8.38°

Magnetic Field
Strength: 52779.6snT
Dip Angle: 67.01°
Date: 5/19/2015
Model: IGRF2010

Hester Farms Pad Sec.31-7N-66W
Hester Farms F-36HN
Plan #1 (5-06-15)
12:19, May 19 2015

ANNOTATIONS

TVD	MD	Annotation
1200.0	1200.0	KOP - Start Build 1.00
1711.7	1712.4	Start 4814.9 hold at 1712.4 MD
6507.4	6527.3	Start DLS 8.00 TFO -97.44
7229.0	7668.6	Start 4316.3 hold at 7668.6 MD
7181.0	11984.9	TD at 11984.9



SECTION DETAILS

Sec	MD	Inc	Azi	TVD	+N/-S	+E/-W	DLeg	TFace	VSec	Target
1	0.0	0.00	0.00	0.0	0.0	0.0	0.00	0.00	0.0	
2	1200.0	0.00	0.00	1200.0	0.0	0.0	0.00	0.00	0.0	
3	1712.4	5.12	7.20	1711.7	22.7	2.9	1.00	7.20	-0.7	
4	6527.3	5.12	7.20	6507.4	449.3	56.8	0.00	0.00	-12.9	
5	7668.6	90.64	269.67	7229.0	510.1	-667.7	8.00	-97.44	714.0	LPL 1150'FNL, 470'FEL, SEC.36
6	11984.9	90.64	269.67	7181.0	485.4	-4983.7	0.00	0.00	5007.2	BHL 1150'FNL, 470'FWL, SEC.36



Bayswater Exploration & Production, LLC

SEC.31-T7N-R66W

Hester Farms Pad Sec.31-7N-66W

Hester Farms F-36HN

Wellbore #1

Plan: Plan #1 (5-06-15)

Standard Planning Report

19 May, 2015



BAYSWATER
EXPLORATION & PRODUCTION, LLC

Database:	Landmark	Local Co-ordinate Reference:	Well Hester Farms F-36HN
Company:	Bayswater Exploration & Production, LLC	TVD Reference:	WELL @ 4939.0ft (RKB -25')
Project:	SEC.31-T7N-R66W	MD Reference:	WELL @ 4939.0ft (RKB -25')
Site:	Hester Farms Pad Sec.31-7N-66W	North Reference:	True
Well:	Hester Farms F-36HN	Survey Calculation Method:	Minimum Curvature
Wellbore:	Wellbore #1		
Design:	Plan #1 (5-06-15)		

Project	SEC.31-T7N-R66W, Weld County, Colorado		
Map System:	US State Plane 1983	System Datum:	Mean Sea Level
Geo Datum:	North American Datum 1983		Using Well Reference Point
Map Zone:	Colorado Northern Zone		Using geodetic scale factor

Site		Hester Farms Pad Sec.31-7N-66W				
Site Position:		Northing:	1,437,939.53 ft	Latitude:	40.533621	
From:	Lat/Long	Easting:	3,185,849.35 ft	Longitude:	-104.831378	
Position Uncertainty:		0.0 ft	Slot Radius:	"	Grid Convergence:	0.43 °

Well	Hester Farms F-36HN					
Well Position	+N-S	-75.1 ft	Northing:	1,437,864.48 ft	Latitude:	40.533415
	+E-W	-0.6 ft	Easting:	3,185,849.36 ft	Longitude:	-104.831380
Position Uncertainty		0.0 ft	Wellhead Elevation:	ft	Ground Level:	4,914.0 ft

Wellbore	Wellbore #1				
Magnetics	Model Name	Sample Date	Declination (°)	Dip Angle (°)	Field Strength (nT)
	IGRF2010	5/19/2015	8.38	67.01	52,780

Design	Plan #1 (5-06-15)			
Audit Notes:				
Version:	Phase:	PROTOTYPE	Tie On Depth:	0.0
Vertical Section:	Depth From (TVD) (ft)	+N/-S (ft)	+E/-W (ft)	Direction (°)
	0.0	0.0	0.0	275.56

Plan Sections										
Measured Depth (ft)	Inclination (°)	Azimuth (°)	Vertical Depth (ft)	+N/-S (ft)	+E/-W (ft)	Dogleg Rate (°/100ft)	Build Rate (°/100ft)	Turn Rate (°/100ft)	TFO (°)	Target
0.0	0.00	0.00	0.0	0.0	0.0	0.00	0.00	0.00	0.00	
1,200.0	0.00	0.00	1,200.0	0.0	0.0	0.00	0.00	0.00	0.00	
1,712.4	5.12	7.20	1,711.7	22.7	2.9	1.00	1.00	0.00	7.20	
6,527.3	5.12	7.20	6,507.4	449.3	56.8	0.00	0.00	0.00	0.00	
7,668.6	90.64	269.67	7,229.0	510.1	-667.7	8.00	7.49	-8.55	-97.44	LPL 1150'FNL, 470
11,984.9	90.64	269.67	7,181.0	485.4	-4,983.7	0.00	0.00	0.00	0.00	BHL 1150'FNL, 470

Database:	Landmark	Local Co-ordinate Reference:	Well Hester Farms F-36HN
Company:	Bayswater Exploration & Production, LLC	TVD Reference:	WELL @ 4939.0ft (RKB -25')
Project:	SEC.31-T7N-R66W	MD Reference:	WELL @ 4939.0ft (RKB -25')
Site:	Hester Farms Pad Sec.31-7N-66W	North Reference:	True
Well:	Hester Farms F-36HN	Survey Calculation Method:	Minimum Curvature
Wellbore:	Wellbore #1		
Design:	Plan #1 (5-06-15)		

Planned Survey									
Measured Depth (ft)	Inclination (°)	Azimuth (°)	Vertical Depth (ft)	+N/-S (ft)	+E/-W (ft)	Vertical Section (ft)	Dogleg Rate (°/100ft)	Build Rate (°/100ft)	Turn Rate (°/100ft)
0.0	0.00	0.00	0.0	0.0	0.0	0.0	0.00	0.00	0.00
100.0	0.00	0.00	100.0	0.0	0.0	0.0	0.00	0.00	0.00
200.0	0.00	0.00	200.0	0.0	0.0	0.0	0.00	0.00	0.00
300.0	0.00	0.00	300.0	0.0	0.0	0.0	0.00	0.00	0.00
400.0	0.00	0.00	400.0	0.0	0.0	0.0	0.00	0.00	0.00
500.0	0.00	0.00	500.0	0.0	0.0	0.0	0.00	0.00	0.00
600.0	0.00	0.00	600.0	0.0	0.0	0.0	0.00	0.00	0.00
700.0	0.00	0.00	700.0	0.0	0.0	0.0	0.00	0.00	0.00
800.0	0.00	0.00	800.0	0.0	0.0	0.0	0.00	0.00	0.00
900.0	0.00	0.00	900.0	0.0	0.0	0.0	0.00	0.00	0.00
1,000.0	0.00	0.00	1,000.0	0.0	0.0	0.0	0.00	0.00	0.00
1,100.0	0.00	0.00	1,100.0	0.0	0.0	0.0	0.00	0.00	0.00
1,200.0	0.00	0.00	1,200.0	0.0	0.0	0.0	0.00	0.00	0.00
KOP - Start Build 1.00									
1,300.0	1.00	7.20	1,300.0	0.9	0.1	0.0	1.00	1.00	0.00
1,400.0	2.00	7.20	1,400.0	3.5	0.4	-0.1	1.00	1.00	0.00
1,500.0	3.00	7.20	1,499.9	7.8	1.0	-0.2	1.00	1.00	0.00
1,600.0	4.00	7.20	1,599.7	13.8	1.7	-0.4	1.00	1.00	0.00
1,700.0	5.00	7.20	1,699.4	21.6	2.7	-0.6	1.00	1.00	0.00
1,712.4	5.12	7.20	1,711.7	22.7	2.9	-0.7	1.00	1.00	0.00
Start 4814.9 hold at 1712.4 MD									
1,800.0	5.12	7.20	1,799.0	30.5	3.9	-0.9	0.00	0.00	0.00
1,900.0	5.12	7.20	1,898.6	39.3	5.0	-1.1	0.00	0.00	0.00
2,000.0	5.12	7.20	1,998.2	48.2	6.1	-1.4	0.00	0.00	0.00
2,100.0	5.12	7.20	2,097.8	57.1	7.2	-1.6	0.00	0.00	0.00
2,200.0	5.12	7.20	2,197.4	65.9	8.3	-1.9	0.00	0.00	0.00
2,300.0	5.12	7.20	2,297.0	74.8	9.4	-2.2	0.00	0.00	0.00
2,400.0	5.12	7.20	2,396.6	83.6	10.6	-2.4	0.00	0.00	0.00
2,500.0	5.12	7.20	2,496.2	92.5	11.7	-2.7	0.00	0.00	0.00
2,600.0	5.12	7.20	2,595.8	101.4	12.8	-2.9	0.00	0.00	0.00
2,700.0	5.12	7.20	2,695.4	110.2	13.9	-3.2	0.00	0.00	0.00
2,800.0	5.12	7.20	2,795.0	119.1	15.0	-3.4	0.00	0.00	0.00
2,900.0	5.12	7.20	2,894.6	127.9	16.2	-3.7	0.00	0.00	0.00
3,000.0	5.12	7.20	2,994.2	136.8	17.3	-3.9	0.00	0.00	0.00
3,100.0	5.12	7.20	3,093.8	145.7	18.4	-4.2	0.00	0.00	0.00
3,200.0	5.12	7.20	3,193.4	154.5	19.5	-4.5	0.00	0.00	0.00
3,300.0	5.12	7.20	3,293.0	163.4	20.6	-4.7	0.00	0.00	0.00
3,400.0	5.12	7.20	3,392.6	172.2	21.8	-5.0	0.00	0.00	0.00
3,500.0	5.12	7.20	3,492.2	181.1	22.9	-5.2	0.00	0.00	0.00
3,600.0	5.12	7.20	3,591.8	190.0	24.0	-5.5	0.00	0.00	0.00
3,700.0	5.12	7.20	3,691.4	198.8	25.1	-5.7	0.00	0.00	0.00
3,800.0	5.12	7.20	3,791.0	207.7	26.2	-6.0	0.00	0.00	0.00
3,900.0	5.12	7.20	3,890.6	216.5	27.4	-6.2	0.00	0.00	0.00
4,000.0	5.12	7.20	3,990.2	225.4	28.5	-6.5	0.00	0.00	0.00
4,100.0	5.12	7.20	4,089.8	234.3	29.6	-6.7	0.00	0.00	0.00
4,200.0	5.12	7.20	4,189.4	243.1	30.7	-7.0	0.00	0.00	0.00
4,300.0	5.12	7.20	4,289.0	252.0	31.8	-7.3	0.00	0.00	0.00
4,400.0	5.12	7.20	4,388.6	260.8	33.0	-7.5	0.00	0.00	0.00
4,500.0	5.12	7.20	4,488.2	269.7	34.1	-7.8	0.00	0.00	0.00
4,600.0	5.12	7.20	4,587.8	278.6	35.2	-8.0	0.00	0.00	0.00
4,700.0	5.12	7.20	4,687.4	287.4	36.3	-8.3	0.00	0.00	0.00
4,800.0	5.12	7.20	4,787.0	296.3	37.4	-8.5	0.00	0.00	0.00
4,900.0	5.12	7.20	4,886.6	305.1	38.6	-8.8	0.00	0.00	0.00
5,000.0	5.12	7.20	4,986.2	314.0	39.7	-9.0	0.00	0.00	0.00

Database:	Landmark	Local Co-ordinate Reference:	Well Hester Farms F-36HN
Company:	Bayswater Exploration & Production, LLC	TVD Reference:	WELL @ 4939.0ft (RKB -25')
Project:	SEC.31-T7N-R66W	MD Reference:	WELL @ 4939.0ft (RKB -25')
Site:	Hester Farms Pad Sec.31-7N-66W	North Reference:	True
Well:	Hester Farms F-36HN	Survey Calculation Method:	Minimum Curvature
Wellbore:	Wellbore #1		
Design:	Plan #1 (5-06-15)		

Planned Survey									
Measured Depth (ft)	Inclination (°)	Azimuth (°)	Vertical Depth (ft)	+N/-S (ft)	+E/-W (ft)	Vertical Section (ft)	Dogleg Rate (°/100ft)	Build Rate (°/100ft)	Turn Rate (°/100ft)
5,100.0	5.12	7.20	5,085.8	322.9	40.8	-9.3	0.00	0.00	0.00
5,200.0	5.12	7.20	5,185.4	331.7	41.9	-9.6	0.00	0.00	0.00
5,300.0	5.12	7.20	5,285.0	340.6	43.0	-9.8	0.00	0.00	0.00
5,400.0	5.12	7.20	5,384.6	349.4	44.1	-10.1	0.00	0.00	0.00
5,500.0	5.12	7.20	5,484.2	358.3	45.3	-10.3	0.00	0.00	0.00
5,600.0	5.12	7.20	5,583.8	367.2	46.4	-10.6	0.00	0.00	0.00
5,700.0	5.12	7.20	5,683.4	376.0	47.5	-10.8	0.00	0.00	0.00
5,800.0	5.12	7.20	5,783.0	384.9	48.6	-11.1	0.00	0.00	0.00
5,900.0	5.12	7.20	5,882.6	393.7	49.7	-11.3	0.00	0.00	0.00
6,000.0	5.12	7.20	5,982.2	402.6	50.9	-11.6	0.00	0.00	0.00
6,100.0	5.12	7.20	6,081.8	411.5	52.0	-11.9	0.00	0.00	0.00
6,200.0	5.12	7.20	6,181.4	420.3	53.1	-12.1	0.00	0.00	0.00
6,300.0	5.12	7.20	6,281.0	429.2	54.2	-12.4	0.00	0.00	0.00
6,400.0	5.12	7.20	6,380.6	438.0	55.3	-12.6	0.00	0.00	0.00
6,500.0	5.12	7.20	6,480.2	446.9	56.5	-12.9	0.00	0.00	0.00
6,527.3	5.12	7.20	6,507.4	449.3	56.8	-12.9	0.00	0.00	0.00
Start DLS 8.00 TFO -97.44									
6,600.0	7.23	314.22	6,579.7	455.7	53.9	-9.5	8.00	2.90	-72.87
6,700.0	14.08	290.49	6,678.0	464.4	38.0	7.2	8.00	6.85	-23.73
6,800.0	21.73	282.62	6,773.1	472.7	8.5	37.4	8.00	7.64	-7.87
6,900.0	29.55	278.75	6,863.2	480.5	-34.0	80.5	8.00	7.83	-3.87
7,000.0	37.45	276.40	6,946.5	487.7	-88.7	135.6	8.00	7.90	-2.36
7,100.0	45.37	274.76	7,021.4	494.0	-154.5	201.7	8.00	7.93	-1.63
7,200.0	53.32	273.53	7,086.5	499.5	-230.1	277.4	8.00	7.95	-1.24
7,300.0	61.27	272.52	7,140.5	503.9	-314.1	361.4	8.00	7.96	-1.00
7,400.0	69.24	271.66	7,182.3	507.2	-404.8	452.0	8.00	7.96	-0.86
7,500.0	77.20	270.89	7,211.2	509.3	-500.4	547.4	8.00	7.97	-0.77
7,600.0	85.17	270.16	7,226.5	510.2	-599.1	645.8	8.00	7.97	-0.73
7,668.6	90.64	269.67	7,229.0	510.1	-667.7	714.0	8.00	7.97	-0.71
Start 4316.3 hold at 7668.6 MD - 7"									
7,700.0	90.64	269.67	7,228.7	509.9	-699.1	745.2	0.00	0.00	0.00
7,800.0	90.64	269.67	7,227.5	509.3	-799.1	844.7	0.00	0.00	0.00
7,900.0	90.64	269.67	7,226.4	508.7	-899.0	944.1	0.00	0.00	0.00
8,000.0	90.64	269.67	7,225.3	508.2	-999.0	1,043.6	0.00	0.00	0.00
8,100.0	90.64	269.67	7,224.2	507.6	-1,099.0	1,143.1	0.00	0.00	0.00
8,200.0	90.64	269.67	7,223.1	507.0	-1,199.0	1,242.5	0.00	0.00	0.00
8,300.0	90.64	269.67	7,222.0	506.5	-1,299.0	1,342.0	0.00	0.00	0.00
8,400.0	90.64	269.67	7,220.9	505.9	-1,399.0	1,441.5	0.00	0.00	0.00
8,500.0	90.64	269.67	7,219.8	505.3	-1,499.0	1,540.9	0.00	0.00	0.00
8,600.0	90.64	269.67	7,218.6	504.7	-1,599.0	1,640.4	0.00	0.00	0.00
8,700.0	90.64	269.67	7,217.5	504.2	-1,699.0	1,739.9	0.00	0.00	0.00
8,800.0	90.64	269.67	7,216.4	503.6	-1,799.0	1,839.3	0.00	0.00	0.00
8,900.0	90.64	269.67	7,215.3	503.0	-1,899.0	1,938.8	0.00	0.00	0.00
9,000.0	90.64	269.67	7,214.2	502.5	-1,999.0	2,038.3	0.00	0.00	0.00
9,100.0	90.64	269.67	7,213.1	501.9	-2,098.9	2,137.7	0.00	0.00	0.00
9,200.0	90.64	269.67	7,212.0	501.3	-2,198.9	2,237.2	0.00	0.00	0.00
9,300.0	90.64	269.67	7,210.9	500.7	-2,298.9	2,336.6	0.00	0.00	0.00
9,400.0	90.64	269.67	7,209.7	500.2	-2,398.9	2,436.1	0.00	0.00	0.00
9,500.0	90.64	269.67	7,208.6	499.6	-2,498.9	2,535.6	0.00	0.00	0.00
9,600.0	90.64	269.67	7,207.5	499.0	-2,598.9	2,635.0	0.00	0.00	0.00
9,700.0	90.64	269.67	7,206.4	498.5	-2,698.9	2,734.5	0.00	0.00	0.00
9,800.0	90.64	269.67	7,205.3	497.9	-2,798.9	2,834.0	0.00	0.00	0.00
9,900.0	90.64	269.67	7,204.2	497.3	-2,898.9	2,933.4	0.00	0.00	0.00
10,000.0	90.64	269.67	7,203.1	496.8	-2,998.9	3,032.9	0.00	0.00	0.00

Database:	Landmark	Local Co-ordinate Reference:	Well Hester Farms F-36HN
Company:	Bayswater Exploration & Production, LLC	TVD Reference:	WELL @ 4939.0ft (RKB -25')
Project:	SEC.31-T7N-R66W	MD Reference:	WELL @ 4939.0ft (RKB -25')
Site:	Hester Farms Pad Sec.31-7N-66W	North Reference:	True
Well:	Hester Farms F-36HN	Survey Calculation Method:	Minimum Curvature
Wellbore:	Wellbore #1		
Design:	Plan #1 (5-06-15)		

Planned Survey										
Measured Depth (ft)	Inclination (°)	Azimuth (°)	Vertical Depth (ft)	+N/-S (ft)	+E/-W (ft)	Vertical Section (ft)	Dogleg Rate (°/100ft)	Build Rate (°/100ft)	Turn Rate (°/100ft)	
10,100.0	90.64	269.67	7,202.0	496.2	-3,098.9	3,132.4	0.00	0.00	0.00	
10,200.0	90.64	269.67	7,200.8	495.6	-3,198.9	3,231.8	0.00	0.00	0.00	
10,300.0	90.64	269.67	7,199.7	495.0	-3,298.9	3,331.3	0.00	0.00	0.00	
10,400.0	90.64	269.67	7,198.6	494.5	-3,398.8	3,430.8	0.00	0.00	0.00	
10,500.0	90.64	269.67	7,197.5	493.9	-3,498.8	3,530.2	0.00	0.00	0.00	
10,600.0	90.64	269.67	7,196.4	493.3	-3,598.8	3,629.7	0.00	0.00	0.00	
10,700.0	90.64	269.67	7,195.3	492.8	-3,698.8	3,729.2	0.00	0.00	0.00	
10,800.0	90.64	269.67	7,194.2	492.2	-3,798.8	3,828.6	0.00	0.00	0.00	
10,900.0	90.64	269.67	7,193.1	491.6	-3,898.8	3,928.1	0.00	0.00	0.00	
11,000.0	90.64	269.67	7,192.0	491.0	-3,998.8	4,027.6	0.00	0.00	0.00	
11,100.0	90.64	269.67	7,190.8	490.5	-4,098.8	4,127.0	0.00	0.00	0.00	
11,200.0	90.64	269.67	7,189.7	489.9	-4,198.8	4,226.5	0.00	0.00	0.00	
11,300.0	90.64	269.67	7,188.6	489.3	-4,298.8	4,326.0	0.00	0.00	0.00	
11,400.0	90.64	269.67	7,187.5	488.8	-4,398.8	4,425.4	0.00	0.00	0.00	
11,500.0	90.64	269.67	7,186.4	488.2	-4,498.8	4,524.9	0.00	0.00	0.00	
11,600.0	90.64	269.67	7,185.3	487.6	-4,598.8	4,624.4	0.00	0.00	0.00	
11,700.0	90.64	269.67	7,184.2	487.0	-4,698.7	4,723.8	0.00	0.00	0.00	
11,800.0	90.64	269.67	7,183.1	486.5	-4,798.7	4,823.3	0.00	0.00	0.00	
11,900.0	90.64	269.67	7,181.9	485.9	-4,898.7	4,922.8	0.00	0.00	0.00	
11,984.9	90.64	269.67	7,181.0	485.4	-4,983.7	5,007.2	0.00	0.00	0.00	
TD at 11984.9										

Targets										
Target Name	Dip Angle (°)	Dip Dir. (°)	TVD (ft)	+N/-S (ft)	+E/-W (ft)	Northing (ft)	Easting (ft)	Latitude	Longitude	
SHL 1664'FNL, 202'F' - plan hits target center - Point	0.00	0.00	1.0	0.0	0.0	1,437,864.48	3,185,849.36	40.533415	-104.831380	
BHL 1150'FNL, 470'F' - plan hits target center - Point	0.00	0.00	7,181.0	485.4	-4,983.7	1,438,312.29	3,180,862.35	40.534746	-104.849309	
LPL 1150'FNL, 470'FE - plan hits target center - Point	0.00	0.00	7,229.0	510.1	-667.7	1,438,369.47	3,185,177.88	40.534815	-104.833782	

Casing Points										
Measured Depth (ft)	Vertical Depth (ft)	Name	Casing Diameter (")	Hole Diameter (")						
7,668.6	7,229.0	7"	7	7-1/2						

Database:	Landmark	Local Co-ordinate Reference:	Well Hester Farms F-36HN
Company:	Bayswater Exploration & Production, LLC	TVD Reference:	WELL @ 4939.0ft (RKB -25')
Project:	SEC.31-T7N-R66W	MD Reference:	WELL @ 4939.0ft (RKB -25')
Site:	Hester Farms Pad Sec.31-7N-66W	North Reference:	True
Well:	Hester Farms F-36HN	Survey Calculation Method:	Minimum Curvature
Wellbore:	Wellbore #1		
Design:	Plan #1 (5-06-15)		

Plan Annotations				
Measured Depth (ft)	Vertical Depth (ft)	Local Coordinates		Comment
		+N/-S (ft)	+E/-W (ft)	
1,200.0	1,200.0	0.0	0.0	KOP - Start Build 1.00
1,712.4	1,711.7	22.7	2.9	Start 4814.9 hold at 1712.4 MD
6,527.3	6,507.4	449.3	56.8	Start DLS 8.00 TFO -97.44
7,668.6	7,229.0	510.1	-667.7	Start 4316.3 hold at 7668.6 MD
11,984.9	7,181.0	485.4	-4,983.7	TD at 11984.9